

User manual

S27D590C

The color and the appearance may differ depending on the product, and the specifications are subject to change without prior notice to improve the performance.

Table Of Contents

BEFORE USING THE PRODUCT	7	Copyright
	7	Icons used in this manual
	8	Cleaning
	9	Securing the Installation Space
	9	Precautions for storage
	10	Safety Precautions
	10	Symbols
	11	Electricity and Safety
	12	Installation and Safety
	14	Operation and Safety
	18	Correct posture to use the product
PREPARATIONS	19	Checking the Contents
	19	Checking the Components
	20	Parts
	20	Control Panel
	21	Direct Key guide
	22	Function Key Guide
	24	Reverse Side
	25	Installation
	25	Attaching the Stand
	26	Removing the Stand
	27	Adjusting the Product Tilt
	27	Anti-theft Lock
	28	Installing the Wall Mount
CONNECTING AND USING A SOURCE DEVICE	30	Before Connecting
	30	Pre-connection Checkpoints
	30	Connecting and Using a PC
	30	Connecting to a PC
	33	Connecting the Power
	35	Driver Installation
	36	Setting Optimum Resolution

Table Of Contents

SCREEN SETUP	37	Brightness
	37	Configuring Brightness
	38	Contrast
	38	Configuring Contrast
	39	Sharpness
	39	Configuring Sharpness
	40	Game Mode
	40	Configuring Game Mode
	41	SAMSUNG MAGIC Bright
	41	Configuring SAMSUNG MAGIC Bright
	43	SAMSUNG MAGIC Upscale
	43	Configuring SAMSUNG MAGIC Upscale
	44	Image Size
	44	Changing the Image Size
	46	HDMI Black Level
	46	Configuring the HDMI Black Level Settings
	47	Response Time
	47	Configuring the Response Time
	48	H-Position & V-Position
	48	Configuring H-Position & V-Position
	49	Coarse
	49	Adjusting Coarse
	50	Fine
	50	Adjusting Fine
CONFIGURING TINT	51	Red
	51	Configuring Red
	52	Green
	52	Configuring Green

Table Of Contents

	53	Blue
	53	Configuring Blue
	54	Color Tone
	54	Configuring the Color Tone Settings
	55	Gamma
	55	Configuring Gamma
COORDINATING OSD	56	Language
	56	Configuring Language
	57	Menu H-Position & Menu V-Position
	57	Configuring Menu H-Position & Menu V-Position
	58	Display Time
	58	Configuring Display Time
	59	Transparency
	59	Changing Transparency
SETUP AND RESET	60	Reset All
	60	Initializing Settings (Reset All)
	61	Eco Saving
	61	Configuring Eco Saving
	62	Off Timer
	62	Configuring Off Timer
	63	Configuring Turn Off After
	64	PC/AV Mode
	64	Configuring PC/AV Mode
	65	Key Repeat Time
	65	Configuring Key Repeat Time
	66	Source Detection
	66	Configuring Source Detection

Table Of Contents

	67	Power LED On
	67	Configuring Power LED On
INFORMATION MENU AND OTHERS	68	INFORMATION
	68	Displaying INFORMATION
	69	Configuring Brightness and Contrast in the Initial Screen
	70	Configuring Volume in the Initial Screen
	70	Volume
	71	Sound Mode
	71	Select Sound
INSTALLING THE SOFTWARE	74	Easy Setting Box
	74	Installing the Software
	75	Removing the Software
TROUBLESHOOTING GUIDE	76	Requirements Before Contacting Samsung Customer Service Center
	76	Testing the Product
	76	Checking the Resolution and Frequency
	76	Check the following.
	79	Q & A
SPECIFICATIONS	81	General
	82	PowerSaver
	83	Standard Signal Mode Table
APPENDIX	85	Contact SAMSUNG WORLD WIDE
	93	Responsibility for the Pay Service (Cost to Customers)
	93	Not a product defect
	93	A Product damage caused by customer's fault
	93	Others

Table Of Contents

94	Correct Disposal
94	Correct Disposal of This Product (Waste Electrical & Electronic Equipment)
95	Terminology

INDEX

Before Using the Product

Copyright

The contents of this manual are subject to change without notice to improve quality.

© 2014 Samsung Electronics

Samsung Electronics owns the copyright for this manual.

Use or reproduction of this manual in parts or entirety without the authorization of Samsung Electronics is prohibited.

Microsoft, Windows and Windows NT are registered trademarks of Microsoft Corporation.

VESA, DPM and DDC are registered trademarks of the Video Electronics Standards Association.

- An administration fee may be charged if either
 - ▣ (a) an engineer is called out at your request and there is no defect in the product (i.e. where you have failed to read this user manual).
 - ▣ (b) you bring the unit to a repair center and there is no defect in the product (i.e. where you have failed to read this user manual).
- The amount of such administration charge will be advised to you before any work or home visit is carried out.

Icons used in this manual



The following images are for reference only. Real-life situations may differ from what is shown in the images.

Before Using the Product

Cleaning

Exercise care when cleaning as the panel and exterior of advanced LCDs are easily scratched.

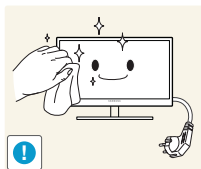
Take the following steps when cleaning.



1. Power off the monitor and computer.
2. Disconnect the power cord from the monitor.



Hold the power cable by the plug and do not touch the cable with wet hands. Otherwise, an electric shock may result.



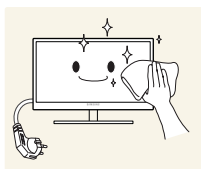
3. Wipe the monitor screen using a clean, soft and dry cloth.



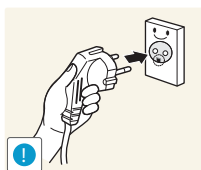
- Do not apply a cleaning agent that contains alcohol, solvent, or surfactant to the monitor.



- Do not spray water or detergent directly on the product.



4. Wet a soft and dry cloth in water and wring thoroughly to clean the exterior of the monitor.



5. Connect the power cord to the product after cleaning the product.
6. Power on the monitor and computer.

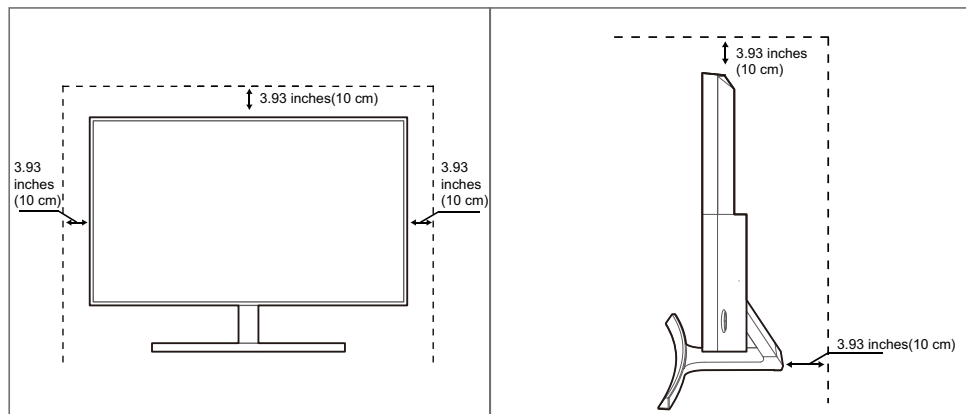
Before Using the Product

Securing the Installation Space

- Ensure some space around the product for ventilation. An internal temperature rise may cause fire and damage the product. Be sure to allow the amount of space as shown below or greater when installing the product.



The exterior may differ depending on the product.



Precautions for storage





Be sure to contact Samsung Customer Service Center (page 85) if the inside of the monitor needs cleaning. (A service fee will be charged.)





Before Using the Product

Safety Precautions

Caution
RISK OF ELECTRIC SHOCK DO NOT OPEN
Caution: TO REDUCE THE RISK OF ELECTRIC SHOCK, DO NOT REMOVE COVER (OR BACK). THERE ARE NO USER SERVICEABLE PARTS INSIDE. REFER ALL SERVICING TO QUALIFIED PERSONNEL.

	This symbol indicates that high voltage is present inside. It is dangerous to make any kind of contact with any internal part of this product.
	This symbol alerts you that important literature concerning operation and maintenance has been included with this product.

Symbols

 Warning	A serious or fatal injury may result if instructions are not followed.
 Caution	Personal injury or damage to properties may result if instructions are not followed.
	Activities marked by this symbol are prohibited.
	Instructions marked by this symbol must be followed.

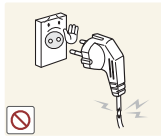
Before Using the Product

Electricity and Safety



The following images are for reference only. Real-life situations may differ from what is shown in the images.

Warning



Do not use a damaged power cord or plug, or a loose power socket.

- An electric shock or fire may result.



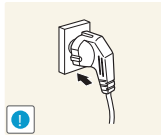
Do not plug many products into the same power socket.

- Otherwise, the socket may overheat and cause a fire.



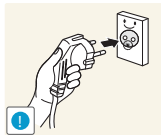
Do not touch the power plug with wet hands.

- Otherwise, an electric shock may result.



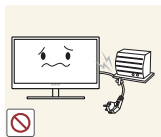
Insert the power plug all the way in so it is not loose.

- An unstable connection may cause a fire.



Ensure you connect the power plug to a grounded power socket. (type 1 insulated devices only).

- An electric shock or injury may result.



Do not bend or pull the power cord with force. Do not weigh the power cord down with a heavy object.

- A damaged power cord may cause an electric shock or fire.



Do not place the power cord or product near heat sources.

- An electric shock or fire may result.



Remove foreign substances such as dust around the plug pins and power socket with a dry cloth.

- Otherwise, a fire may result.

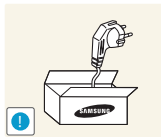
Before Using the Product

Caution



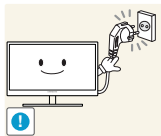
Do not unplug the power cord when the product is in use.

- The product may become damaged by an electric shock.



Do not use the power cord for products other than authorized products supplied by Samsung.

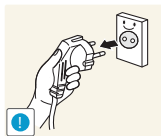
- An electric shock or fire may result.



Keep the power socket where the power cord is connected unobstructed.

- If any problem occurs in the product, unplug the power cable to completely cut the power to the product.

Power to the product cannot be completely cut off with the power button.



Hold the plug when disconnecting the power cord from the power socket.

- An electric shock or fire may result.

Installation and Safety

Warning



DO NOT PLACE CANDLES, INSECT REPELLANTS OR CIGARETTES ON TOP OF THE PRODUCT. DO NOT INSTALL THE PRODUCT NEAR HEAT SOURCES.

- Otherwise, a fire may result.



Avoid installing the product in a narrow space with bad ventilation, such as a bookshelf or wall closet.

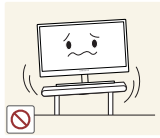
- Otherwise, a fire may result due to an increased internal temperature.



Keep the plastic packaging bag for the product in a place that cannot be reached by children.

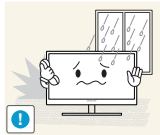
- Children may suffocate.

Before Using the Product



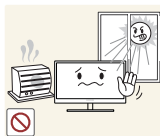
Do not install the product on an unstable or vibrating surface (insecure shelf, sloped surface, etc.).

- The product may fall and break or cause a personal injury.
- Using the product in an area with excess vibration may damage the product or cause a fire.



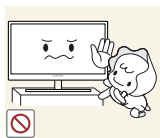
Do not install the product in a vehicle or a place exposed to dust, moisture (water drips, etc.), oil, or smoke.

- An electric shock or fire may result.



Do not expose the product to direct sunlight, heat, or a hot object such as a stove.

- Otherwise, the product lifespan may be reduced, or a fire may result.



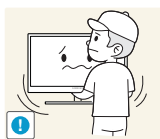
Do not install the product within the reach of young children.

- The product may fall and injure children.



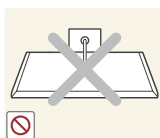
Edible oil, such as soybean oil, can damage or deform the product. Do not install the product in a kitchen or near a kitchen counter.

Caution



Take care not to drop the product when moving it.

- Otherwise, product failure or personal injury may result.



Do not set down the product on its front.

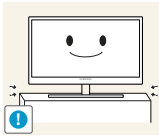
- The screen may become damaged.



When installing the product on a cabinet or shelf, make sure that the bottom edge of the front of the product is not protruding.

- The product may fall and break or cause a personal injury.
- Install the product only on cabinets or shelves of the right size.

Before Using the Product



Put down the product carefully.

- The product may fall and break or cause a personal injury.



Installing the product in an unusual place (a place exposed to a lot of fine dust, chemical substances, extreme temperatures or a significant presence of moisture, or a place where the product will operate continuously for an extended period of time) may seriously affect its performance.

- Be sure to consult Samsung Customer Service Center (page 85) before installation if you want to install the product at such a place.

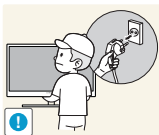
Operation and Safety

Warning



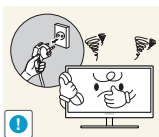
High voltage runs through the product. Do not attempt to disassemble, repair, or modify the product on your own.

- An electric shock or fire may result.
- Contact Samsung Customer Service Center (page 85) for repair.



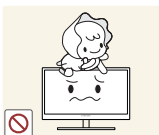
To move the product, first disconnect all the cables from it, including the power cable.

- Otherwise, the power cord may be damaged and a fire or electric shock may result.



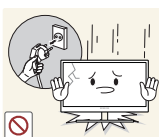
If the product generates a strange noise, a burning smell, or smoke, remove the power cord immediately and contact Samsung Customer Service Center (page 85).

- An electric shock or fire may result.



Do not let children hang from the product or climb on top of it.

- The product may fall, and your child may become injured or seriously harmed.



If the product falls or the exterior is damaged, power off the product, remove the power cord, and contact Samsung Customer Service Center (page 85).

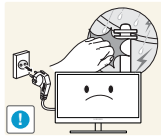
- Otherwise, an electric shock or fire may result.



Do not put a heavy object, toy, or sweets on top of the product.

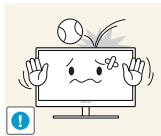
- The product or heavy objects may fall as children try to reach for the toy or sweets resulting in a serious injury.

Before Using the Product



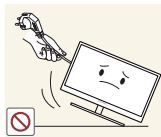
If there is a thunderstorm or lightning strike, turn off the power and disconnect the power cable.

- An electric shock or fire may result.



Do not drop objects on the product or apply impact.

- An electric shock or fire may result.



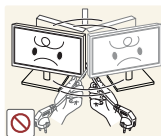
Do not move the product by pulling the power cord or any cable.

- Otherwise, the cable may be damaged and product failure, an electric shock or fire may result.



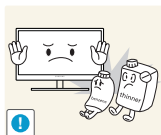
If a gas leakage is found, do not touch the product or power plug. Also, ventilate the area immediately.

- Sparks can cause an explosion or fire.



Do not lift or move the product by pulling the power cord or any cable.

- Otherwise, the cable may be damaged and product failure, an electric shock or fire may result.



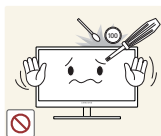
Do not use or keep combustible spray or an inflammable substance near the product.

- An explosion or fire may result.



Ensure the vents are not blocked by tablecloths or curtains.

- Otherwise, a fire may result from an increased internal temperature.



Do not insert a metallic object (a chopstick, coin, hair pin, etc.) or inflammable object (paper, match, etc.) into the vent or ports of the product.

- If water or any foreign substance enters the product, be sure to power off the product, remove the power cord, and contact Samsung Customer Service Center (page 85).
- Product failure, an electric shock or fire may result.

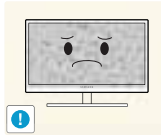


Do not place objects containing liquid (vases, pots, bottles, etc) or metallic objects on top of the product.

- If water or any foreign substance enters the product, be sure to power off the product, remove the power cord, and contact Samsung Customer Service Center (page 85).
- Product failure, an electric shock or fire may result.

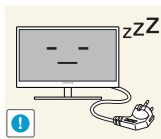
Before Using the Product

Caution



Leaving the screen fixed on a stationary image for an extended period of time may cause afterimage burn-in or defective pixels.

- If you are not going to use the product for an extended period of time, activate power-saving mode or a moving-picture screen saver.



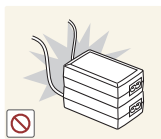
Disconnect the power cord from the power socket if you do not plan on using the product for an extended period of time (vacation, etc.).

- Otherwise, a fire may result from accumulated dust, overheating, an electric shock, or electric leakage.



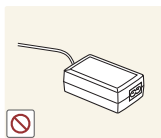
Use the product at the recommended resolution and frequency.

- Otherwise, Your eyesight may deteriorate.



Do not put DC power adapters together.

- Otherwise, a fire may result.



Remove the plastic bag from the DC power adapter before you use it.

- Otherwise, a fire may result.



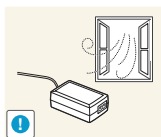
Do not let water enter the DC power device or get the device wet.

- An electric shock or fire may result.
- Avoid using the product outdoors where it can be exposed to rain or snow.
- Be careful not to get the DC power adapter wet when you wash the floor.

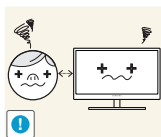


Do not put the DC power adapter near to any heating apparatus.

- Otherwise, a fire may result.



Keep the DC power adapter in a well-ventilated area.



Looking at the screen too close for an extended period of time can deteriorate your eyesight.

Before Using the Product



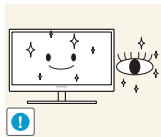
Do not hold the monitor upside-down or move it by holding the stand.

- The product may fall and break or cause a personal injury.



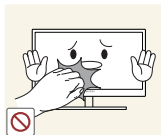
Do not use humidifiers or stoves around the product.

- An electric shock or fire may result.

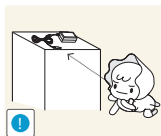


Rest your eyes for more than 5 minutes for every 1 hour of product use.

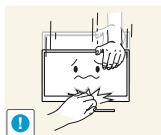
- Eye fatigue will be relieved.



Do not touch the screen when the product has been turned on for an extended period of time as it will become hot.

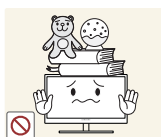


Store the small accessories used with the product out of reach of children.



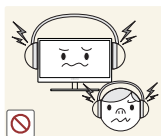
Exercise caution when adjusting the product angle or stand height.

- Otherwise, children's fingers or hands may become stuck and injured.
- Tilting the product excessively may cause it to fall and result in personal injury.



Do not place heavy objects on the product.

- Product failure or personal injury may result.



When using headphones or earphones, do not turn the volume too high.

- Having the sound too loud may damage your hearing.

Before Using the Product

Correct posture to use the product



Use the product in the correct posture as follows:

- Straighten your back.
- Allow a distance of 45 to 50cm between your eye and the screen, and look slightly downward at the screen.
Keep your eyes directly in front of the screen.
- Adjust the angle so light does not reflect on the screen.
- Keep your forearms perpendicular to your upper arms and level with the back of your hands.
- Keep your elbows at about a right angle.
- Adjust the height of the product so you can keep your knees bent at 90 degrees or more, your heels attached to the floor, and your arms lower than your heart.

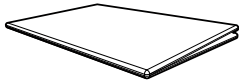
1.1 Checking the Contents

1.1.1 Checking the Components



- Contact the dealer from whom you purchased the product if any item is missing.
- The appearance of the components and items sold separately may differ from the image shown.
- The appearance of actual components may vary from the images below.

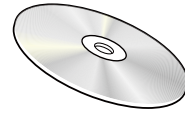
Components



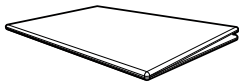
Quick Setup Guide



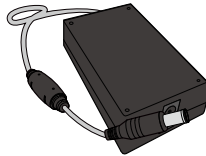
Warranty card
(Not available in some locations)



User manual



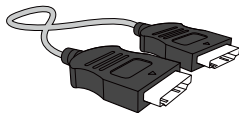
Regulatory guide



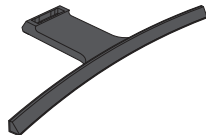
DC power adapter



Power cable



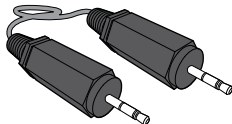
HDMI cable



Stand base



Stand neck

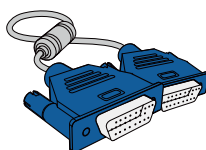


Stereo cable

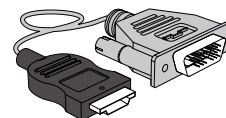
Items sold separately



DP cable



D-SUB cable



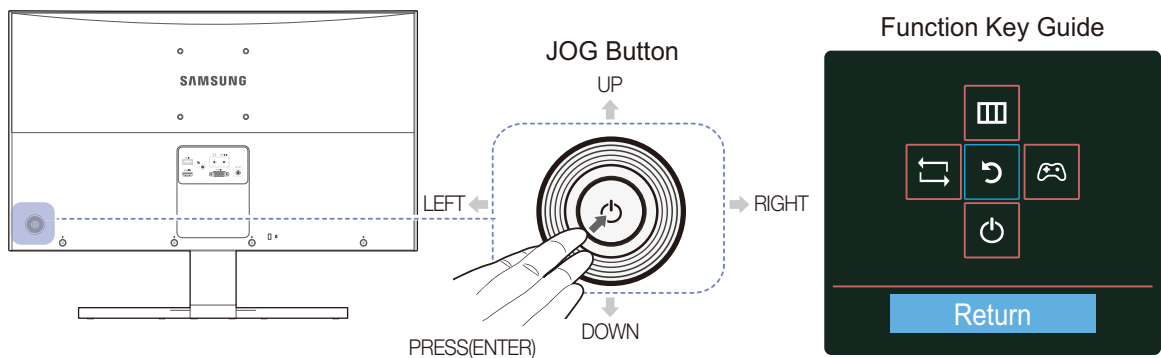
HDMI-DVI cable

1.2 Parts

1.2.1 Control Panel



The color and shape of parts may differ from what is shown. Specifications are subject to change without notice to improve quality.



Icons	Description
JOG Button	<p>Multi directional button that helps navigate.</p> <p> The JOG button is located on the rear left side of the product. The button can be used to move up, down, left or right, or as Enter.</p>
Function Key Guide	<p>Press the JOG button when the screen is turned on. The Function Key Guide will appear. To access the onscreen menu when the guide is displayed, press the corresponding direction button again.</p> <p> Function Key Guide may vary depending on the function or product model. Please refer to the actual product.</p>

1.2.2 Direct Key guide

For guidance on shortcut keys, the below OSD (On Screen Display) will be displayed if you move the JOG button in any direction.



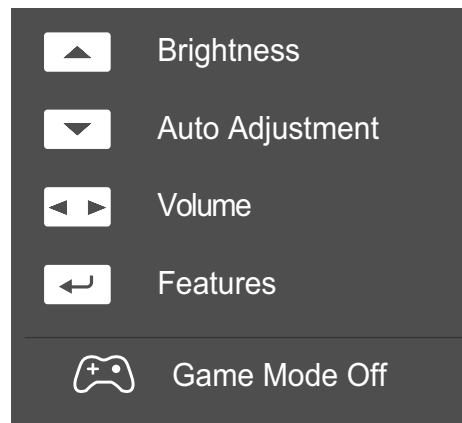
HDMI, DisplayPort mode option



- UP/DOWN: Adjust **Brightness, Contrast**.
- LEFT/RIGHT: Adjust **Volume, Sound Mode, Select Sound**.
- PRESS(ENTER): Display Function Key Guide.



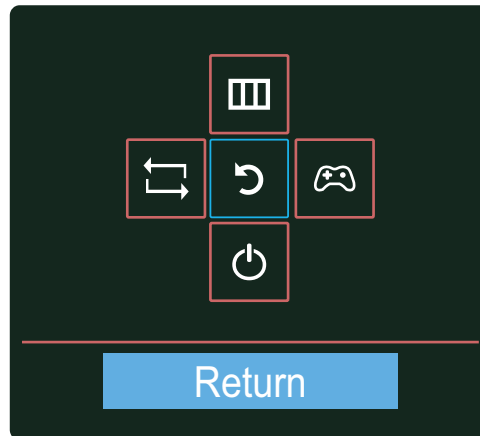
Analog mode option




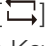



- UP: Adjust **Brightness, Contrast**.
- DOWN: Changing the resolution in Display Properties will activate the **Auto Adjustment** function.
 - This function is only available in **Analog** mode.
- LEFT/RIGHT: Adjust **Volume, Sound Mode, Select Sound**.
- PRESS(ENTER): Display Function Key Guide.




1.2.3 Function Key Guide

To enter the main menu or to use other items, press the JOG button to display the Function Key Guide. You can exit by pressing the JOG button again.



- UP/DOWN/LEFT/RIGHT: Move to the item you want. The description for each item will appear when the focus changes.
- PRESS(ENTER): The selected item will be applied.

Icons	Description
	Selects [
	<ul style="list-style-type: none"> • Selects [The OSD (On Screen Display) of your Monitor's feature appears. • OSD control lock: Maintain the current settings, or lock the OSD control to prevent unintended changes to settings. Enable/Disable: To lock/unlock the OSD control, press the LEFT button for 10 seconds when the main menu displayed. <p> If the OSD control is locked, Brightness and Contrast can be adjusted. Game Mode is available. INFORMATION can be viewed</p>

Icons	Description
	<p>Selects [] by moving the JOG button in the function key guide screen.</p> <p>Press to enable or disable Game Mode.</p> <p>The items below are not available if the Game Mode function is enable.</p> <ul style="list-style-type: none"> • PICTURE → Contrast, Sharpness, SAMSUNG MAGICBright, SAMSUNG MAGICUpscale • COLOR • SETUP&RESET → Eco Saving
	<p>Selects [] to turn the Monitor off by moving the JOG button in the function key guide screen.</p>



Actual models because of functional variation, Function key guide options will be different.
Please run the corresponding function based on the actual icon and description.



When the monitor displays nothing (i.e. Power saving mode or Non-signal mode), 2 direct keys for control source and power could be used as below.

JOG Button	Power saving/Non-signal mode
UP	Source Change
Down	
PRESS(ENTER) for 2 seconds	Power Off



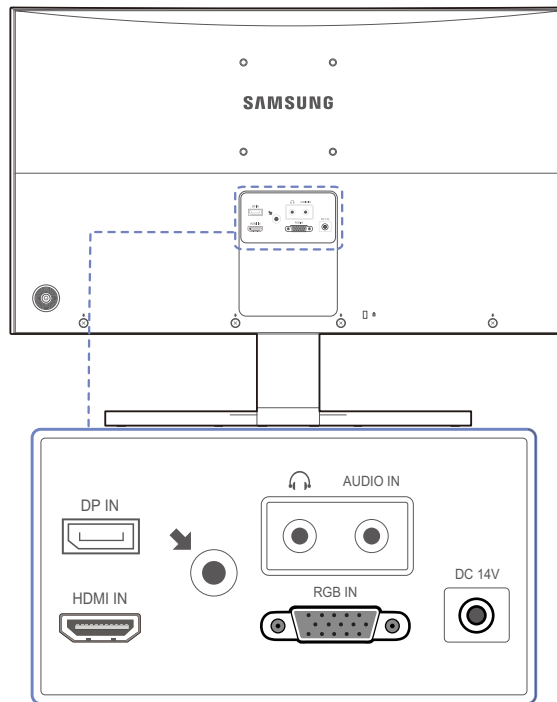
When the monitor displays the Main menu the JOG Button could be used as below.






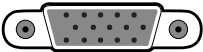
JOG Button	Action
UP/DOWN	- Move the option
LEFT	<ul style="list-style-type: none"> - Exit the Main menu. - Close Sublist without saving value. - Value decreases in the slider.
RIGHT	<ul style="list-style-type: none"> - Move to next depth. - Value increases in the slider.
ENTER	<ul style="list-style-type: none"> - Move to next depth. - Save the value and close Sublist.

1.2.4 Reverse Side



The color and shape of parts may differ from what is shown. Specifications are subject to change without notice to improve quality.



Port	About ports
	Connects to a PC using a DP cable
	Connect to a source device using an HDMI cable.
	<ul style="list-style-type: none">  Connect to an audio output device such as headphones. [AUDIO IN] Connect to audio input using an audio cable.
	Connects to the DC power adapter.
	Connect to a PC using the D-SUB cable.

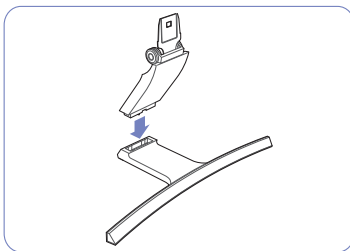
1.3 Installation

1.3.1 Attaching the Stand

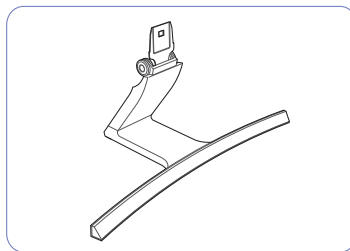


Before assembling the product, place the product down on a flat and stable surface so that the screen is facing downwards.

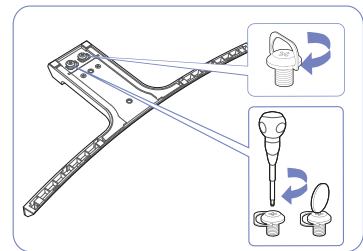
Warning: The product is curved. Placing pressure on the product when on a flat surface may damage the product. When the product is on the ground facing up or down, do not put pressure on it.



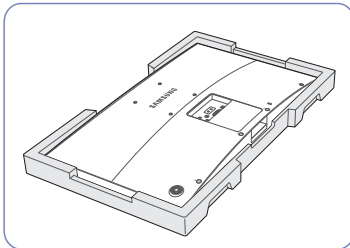
Insert the stand neck into the stand base in the direction shown in the figure.



Check that the stand neck is firmly connected.

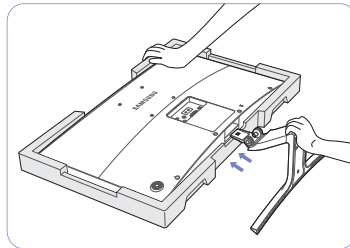


Tightly fasten the connecting screw at the bottom of the stand base.



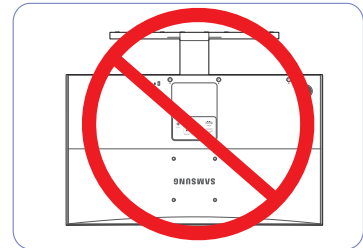
Place the protective Styrofoam (cushion) included in the package on the floor and place the product facing down on the Styrofoam, as shown in the image.

If Styrofoam is unavailable, use a thick sitting mat.



Hold the main body of the product with your hand as shown by the figure.

Push the assembled stand into the main body in the direction of the arrow as shown in the figure.



- Caution

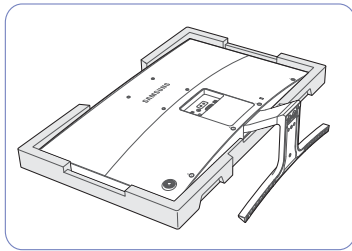
Do not hold the product upside down only by the stand.

1.3.2 Removing the Stand



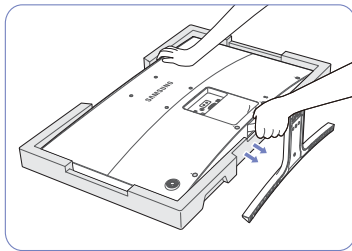
Before assembling the product, place the product down on a flat and stable surface so that the screen is facing downwards.

Warning: The product is curved. Placing pressure on the product when on a flat surface may damage the product. When the product is on the ground facing up or down, do not put pressure on it.

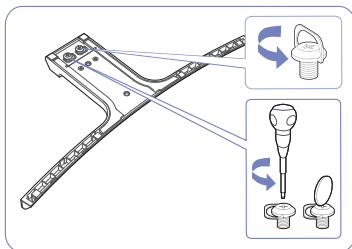


Place the protective Styrofoam (cushion) included in the package on the floor and place the product facing down on the Styrofoam, as shown in the image.

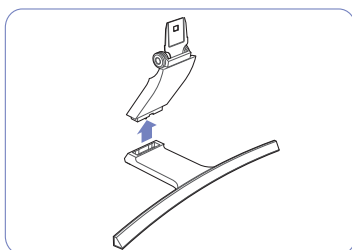
If Styrofoam is unavailable, use a thick sitting mat.



While holding the upper part of the monitor with one hand, pull the stand neck with the other hand in the arrow direction to detach the stand.



Turn the connecting screw at the bottom of the stand base to separate it.

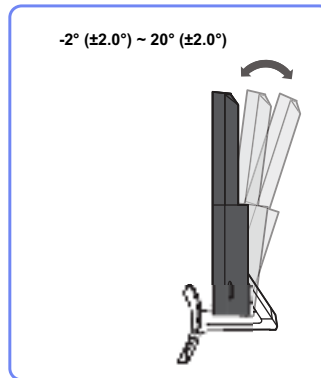


Remove the stand neck from the stand base by pulling it in the direction of the arrow as shown in the figure.

1.3.3 Adjusting the Product Tilt



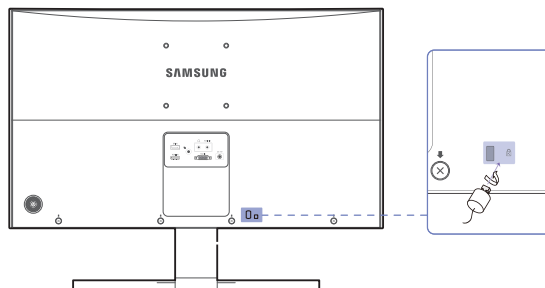
The color and shape of parts may differ from what is shown. Specifications are subject to change without notice to improve quality.



- You can adjust the tilt of your monitor.
- Hold the lower part of the product and adjust the tilt carefully.

1.3.4 Anti-theft Lock

An anti-theft lock allows you to use the product securely even in public places. The locking device shape and locking method depend on the manufacturer. Refer to the user guide provided with your anti-theft locking device for details. The lock device is sold separately.



The color and shape of parts may differ from what is shown. Specifications are subject to change without notice to improve quality.

To lock an anti-theft locking device:

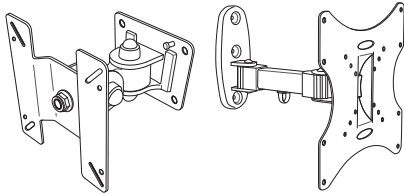
- 1 Fix the cable of your anti-theft locking device to a heavy object such as a desk.
- 2 Put one end of the cable through the loop on the other end.
- 3 Insert the locking device into the anti-theft lock slot at the back of the product.
- 4 Lock the locking device.



- An anti-theft locking device can be purchased separately.
- Refer to the user guide provided with your anti-theft locking device for details.
- Anti-theft locking devices can be purchased at electronics retailers or online.

1.3.5 Installing the Wall Mount

Installing the Wall Mount Kit



The wall mount kit allows you to mount the product on the wall.

Purchase a compatible wall-mount kit to use with the product.

For detailed information on installing the wall mount, see the instructions provided with the wall mount.

We recommend you contact a technician for assistance when installing the wall mount bracket.

Samsung Electronics is not responsible for any damage to the product or injury to yourself or others if you elect to install the wall mount on your own.

Wall Mount Kit Specifications (VESA)



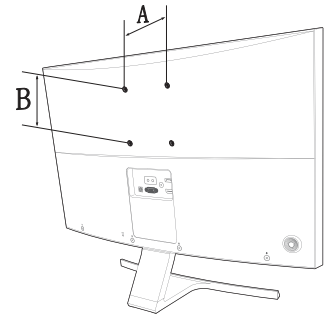
Install your wall mount on a solid wall perpendicular to the floor. Before attaching the wall mount to surfaces other than plaster board, please contact your nearest dealer for additional information.

If you install the product on a slanted wall, it may fall and result in severe personal injury.

Samsung wall mount kits contain a detailed installation manual and all parts necessary for assembly are provided.



- For wall mounts that do not comply with the VESA standard screw specifications, the length of the screws may differ depending on the wall mount specifications.
- Do not fasten the screws too firmly. This may damage the product or cause the product to fall, leading to personal injury. Samsung is not liable for these kinds of accidents.
- Samsung is not liable for product damage or personal injury when a non-VESA or non-specified wall mount is used or the consumer fails to follow the product installation instructions.
- Do not mount the product at more than a 15 degree tilt.
- Always have two people mount the product on a wall.
- Standard dimensions for wall mount kits are shown in the table below.



Unit: mm (inches)

Model name	VESA screw hole specs (A * B) in millimeters	Standard Screw	Quantity
SD590C	100 X 100 (3.9x3.9)	M4	4



Do not install your Wall Mount Kit while your product is turned on. It may result in personal injury due to electric shock.

2.1 Before Connecting

2.1.1 Pre-connection Checkpoints

- Before connecting a source device, read the user manual provided with it.
The number and locations of ports on source devices may differ from device to device.
- Do not connect the power cable until all connections are completed.
Connecting the power cable during connection may damage the product.
- Check the types of ports at the back of the product you want to connect.

2.2 Connecting and Using a PC

2.2.1 Connecting to a PC

- Select a connection method suitable for your PC.

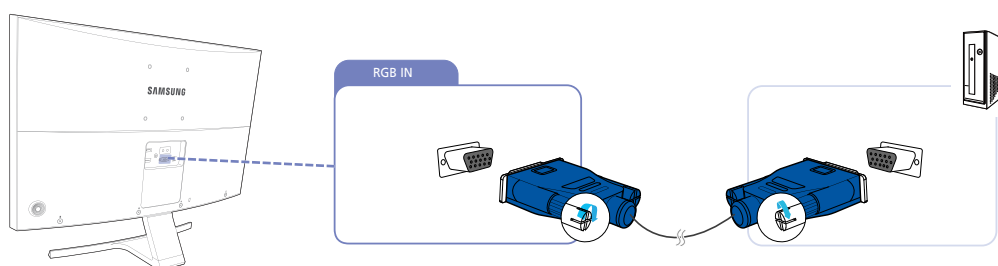


Connecting parts may differ in different products.

Connection Using the D-SUB Cable (Analog Type)



Do not connect the power cable before connecting all other cables. Ensure you connect a source device first before connecting the power cable.

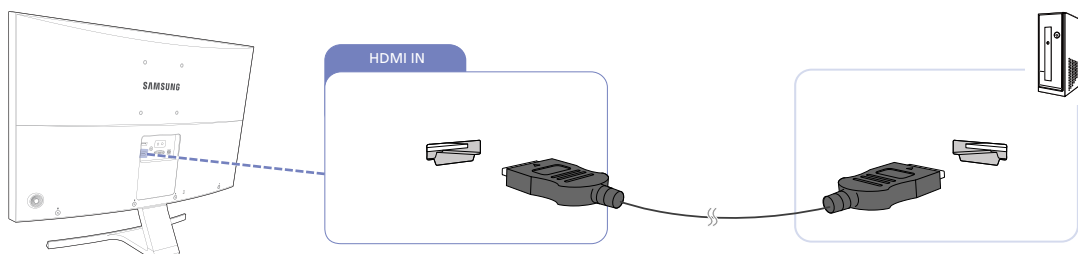


- 1 Connect the D-SUB cable to the [RGB IN] port on the back of the product and the RGB port on the PC.
- 2 Connect the DC power adapter to the product and a power socket. Next, turn on the power switch on the PC. (For details, refer to "2.2.2 Connecting the Power".)
- 3 Change the input source to **Analog** controlling the JOG button UP/DOWN, when input source is not set.

Connection Using the HDMI Cable



Do not connect the power cable before connecting all other cables. Ensure you connect a source device first before connecting the power cable.

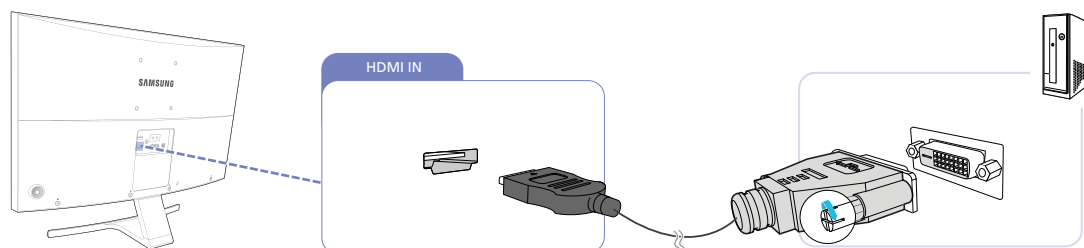


- 1 Connect the HDMI cable to the [HDMI IN] port on the back of the product and the HDMI port on the PC.
- 2 Connect the DC power adapter to the product and a power socket. Next, turn on the power switch on the PC. (For details, refer to "2.2.2 Connecting the Power".)
- 3 Change the input source to **HDMI** controlling the JOG button UP/DOWN, when input source is not set.

Connection Using an HDMI-DVI Cable



Do not connect the power cable before connecting all other cables. Ensure you connect a source device first before connecting the power cable.

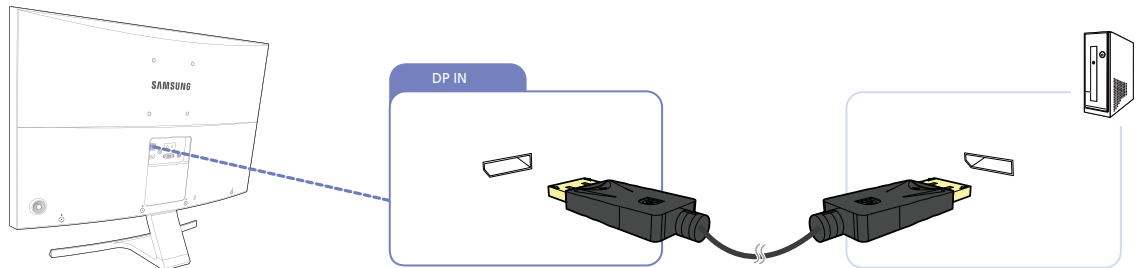


- 1 Connect the HDMI-DVI cable to the [HDMI IN] port on the back of the product and the DVI port on the PC.
- 2 Connect the DC power adapter to the product and a power socket. Next, turn on the power switch on the PC. (For details, refer to "2.2.2 Connecting the Power".)
- 3 Change the input source to **HDMI** controlling the JOG button UP/DOWN, when input source is not set.

Connection Using an DP Cable



- Do not connect the power cable before connecting all other cables. Ensure you connect a source device first before connecting the power cable.
- A DP cable shorter under 1.5m in length is recommended. Using a cable longer than 1.5m can affect the picture quality.

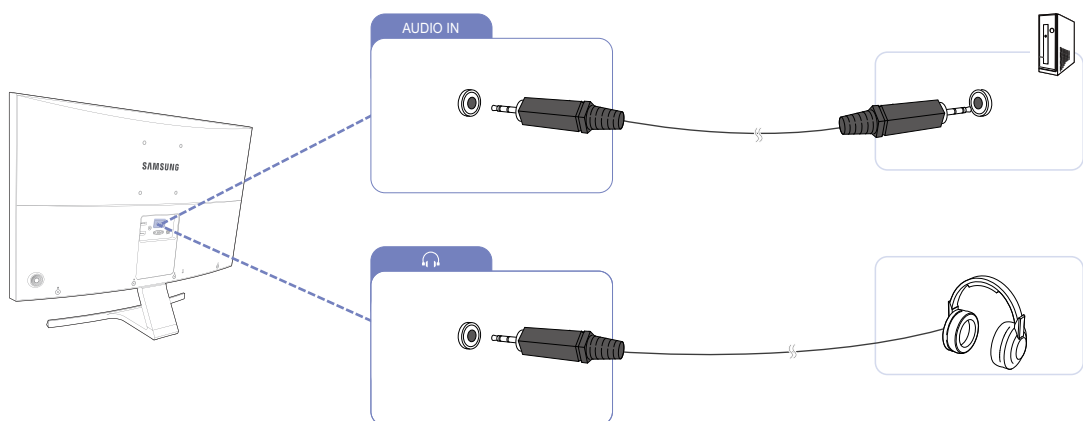


- 1 Connect the DP cable to the [DP IN] port on the back of the product and the DP port on the PC.
- 2 Connect the DC power adapter to the product and a power socket. Next, turn on the power switch on the PC. (For details, refer to "2.2.2 Connecting the Power".)
- 3 Change the input source to **DisplayPort** controlling the JOG button UP/DOWN, when input source is not set.

Connecting to Headphones or Speakers



- Do not connect the power cable before connecting all other cables. Ensure you connect a source device first before connecting the power cable.



- 1 Connect an audio output device such as headphones to [🎧] port on the product.

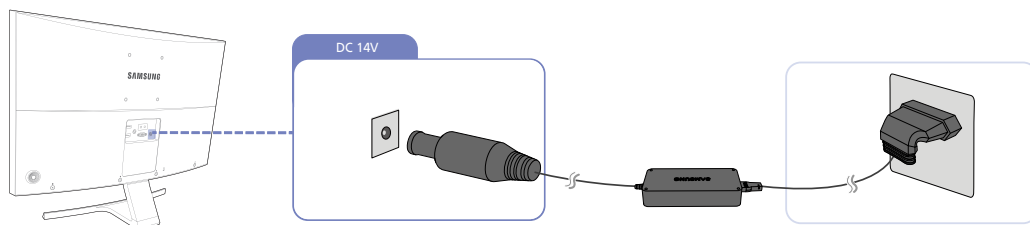
2.2.2 Connecting the Power



- Connecting parts may differ in different products.
- The exterior may differ depending on the product.

Power connection using detachable DC power adapter

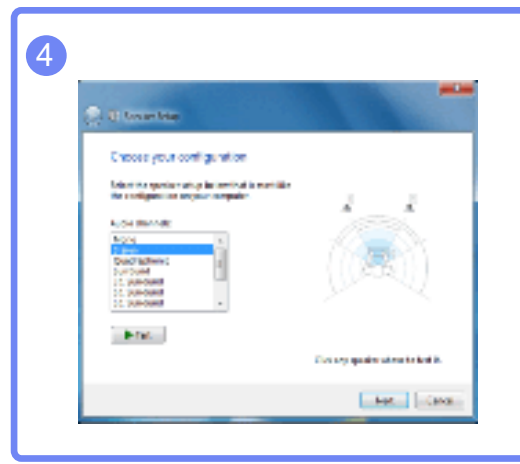
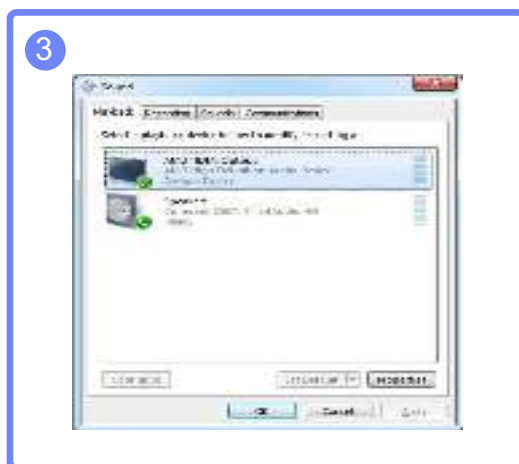
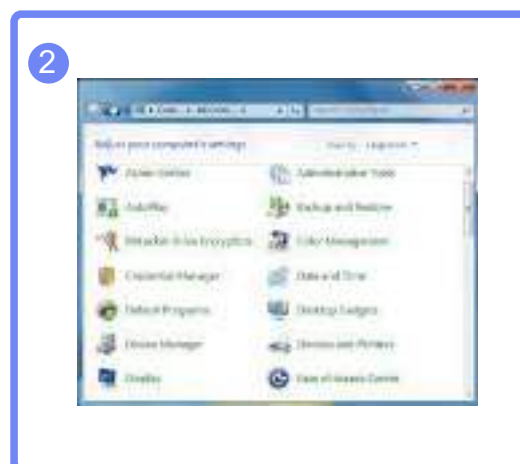
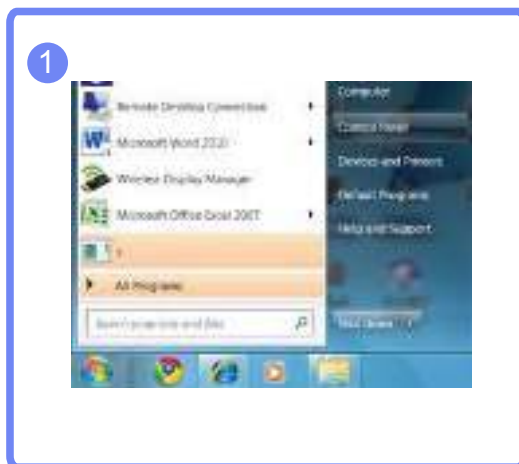
- 1 Connect the power cable to the DC power adapter.
- 2 Then, connect the DC power adapter to the [DC 14V] port on the back of the product
- 3 Next, connect the power cable to the power outlet.



The input voltage is switched automatically.

Changing the sound settings on Windows

Control Panel → Audio → Speaker → Speaker Setup



If using two monitors or more

When two or more monitors are connected to your PC, configure the settings as follows to use the speakers from each of the connected monitors.

- 1 Check the cable connection between the product and PC, and ensure the connectors are locked. (Refer to "2.2 Connecting and Using a PC")
- 2 For a monitor connected via **HDMI**, set **PC/AV Mode** to either **PC** or **AV**. (Refer to "6.4 PC/AV Mode")
- 3 Connect an earphone distributor to the AUDIO OUT port on your PC. Next, connect a stereo cable from the earphone distributor to each monitor.

2.2.3 Driver Installation



- You can set the optimum resolution and frequency for this product by installing the corresponding drivers.
- An installation driver is contained on the CD supplied with the product.
- If the file provided is faulty, visit the Samsung homepage (<http://www.samsung.com/>) and download the file.

- 1 Insert the user manual CD provided with the product into the CD-ROM drive.
- 2 Click "Windows Driver".
- 3 Follow the instructions given on the screen to proceed with installation.
- 4 Select your product model from the list of models.

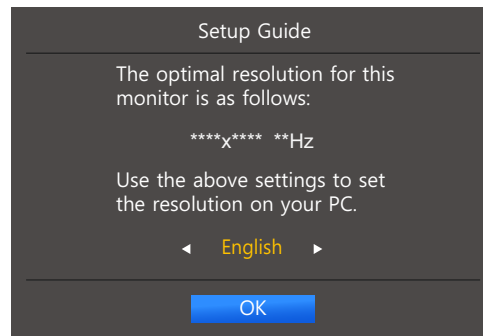


- 5 Go to Display Properties and check that the resolution and refresh rate are appropriate. Refer to your Windows OS manual for further details.

2.2.4 Setting Optimum Resolution

An information message about setting optimum resolution will appear if you power on the product for the first time after purchase.

Select a language on the product and change the resolution on your PC to the optimum setting.



- 1 Select a language by moving the JOG button LEFT/RIGHT. Next, press the JOG button.
- 2 To hide the information message, press the JOG button.



- If the optimum resolution is not selected, the message will appear up to three times for a specified time even when the product is turned off and on again.
- The optimum resolution can also be selected in **Control Panel** on your PC.

Screen Setup

Configure the screen settings such as brightness.

A detailed description of each function is provided. Refer to your product for details.

3.1 Brightness

You can adjust the general brightness of the picture. (Range: 0~100)

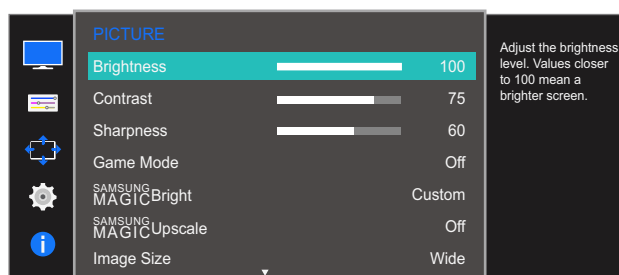
A higher value will make the picture appear brighter.



- This menu is not available when **SAMSUNG MAGICBright** is set to **Dynamic Contrast** mode.
- This menu is not available when **Eco Saving** is enabled.
- The functions available on the monitor may vary depending on the model. Refer to the actual product.

3.1.1 Configuring Brightness

- 1 When the Function Key Guide appears, select [] by moving the JOG button UP. Next, press the JOG button.
- 2 Move to **PICTURE** controlling the JOG button UP/DOWN and press the JOG button.
- 3 Move to **Brightness** controlling the JOG button UP/DOWN and press the JOG button.



- 4 Adjust the **Brightness** controlling the JOG button LEFT/RIGHT.
- 5 The selected option will be applied.

3.2 Contrast

Adjust the contrast between the objects and background. (Range: 0~100)

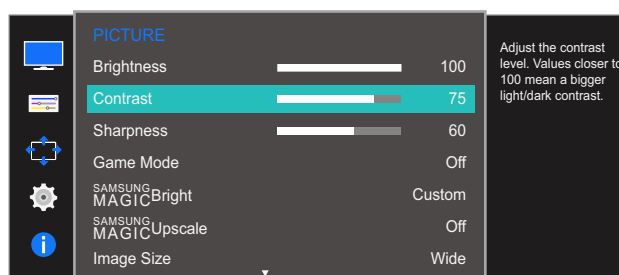
A higher value will increase the contrast to make the object appear clearer.



- This option is not available when **SAMSUNG MAGICBright** is in **Cinema** or **Dynamic Contrast** mode.
- This menu is not available when **Game Mode** is enabled.
- The functions available on the monitor may vary depending on the model. Refer to the actual product.

3.2.1 Configuring Contrast

- 1 When the Function Key Guide appears, select **[MENU]** by moving the JOG button UP. Next, press the JOG button.
- 2 Move to **PICTURE** controlling the JOG button UP/DOWN and press the JOG button.
- 3 Move to **Contrast** controlling the JOG button UP/DOWN and press the JOG button.



- 4 Adjust the **Contrast** controlling the JOG button LEFT/RIGHT.
- 5 The selected option will be applied.

3.3 Sharpness

Make the outline of objects more clear or blurry. (Range: 0~100)

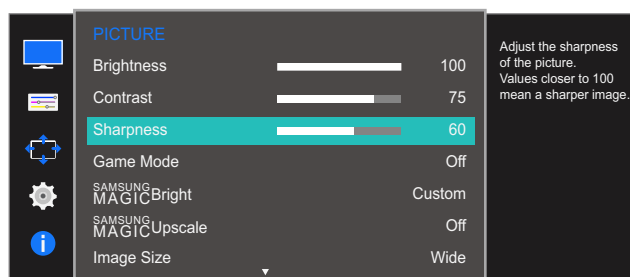
A higher value will make the outline of objects clearer.



- This option is not available when **SAMSUNG MAGICBright** is in **Cinema** or **Dynamic Contrast** mode.
- This menu is not available when **SAMSUNG MAGICUpscale** is in **Mode1** or **Mode2**.
- This menu is not available when **Game Mode** is enabled.
- The functions available on the monitor may vary depending on the model. Refer to the actual product.

3.3.1 Configuring Sharpness

- 1 When the Function Key Guide appears, select [] by moving the JOG button UP. Next, press the JOG button.
- 2 Move to **PICTURE** controlling the JOG button UP/DOWN and press the JOG button.
- 3 Move to **Sharpness** controlling the JOG button UP/DOWN and press the JOG button.



- 4 Adjust the **Sharpness** controlling the JOG button LEFT/RIGHT.
- 5 The selected option will be applied.

3.4 Game Mode

Configure the product screen settings for game mode.

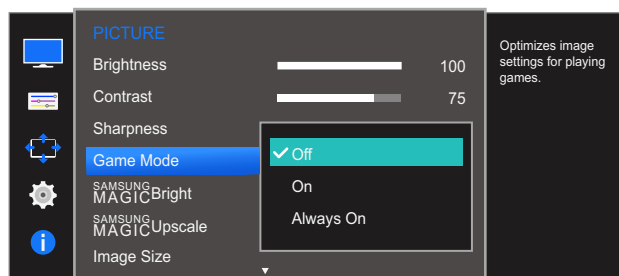
Use this feature when playing games on a PC or when a game console such as PlayStation™ or Xbox™ is connected.



The functions available on the monitor may vary depending on the model. Refer to the actual product.

3.4.1 Configuring Game Mode

- 1 When the Function Key Guide appears, select [] by moving the JOG button UP. Next, press the JOG button.
- 2 Move to **PICTURE** controlling the JOG button UP/DOWN and press the JOG button.
- 3 Move to **Game Mode** controlling the JOG button UP/DOWN and press the JOG button. The following screen will appear.



- 4 Move to the desired option controlling the JOG button UP/DOWN and press the JOG button.
- 5 The selected option will be applied.



- When the monitor turns off, enters power-saving mode or changes input sources, **Game Mode** turns **Off** even if it is set to **On**.
- If you want to keep **Game Mode** enabled all the time, select **Always On**.

3.5 SAMSUNG MAGIC Bright

This menu provides an optimum picture quality suitable for the environment where the product will be used.

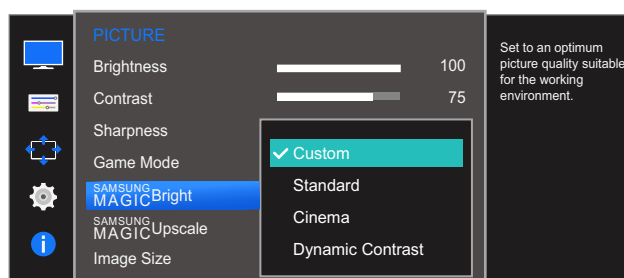


- This menu is not available when **Eco Saving** is enabled.
- This menu is not available when **Game Mode** is enabled.
- The functions available on the monitor may vary depending on the model. Refer to the actual product.

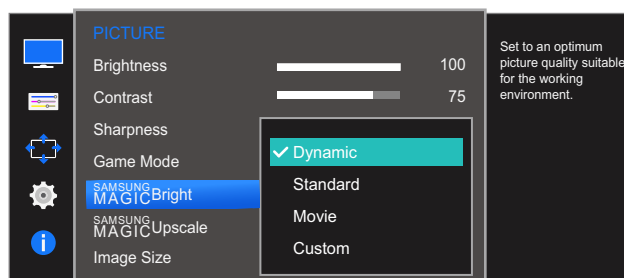
You can customize the brightness to suit your preferences.

3.5.1 Configuring SAMSUNG MAGIC Bright

- 1 When the Function Key Guide appears, select [] by moving the JOG button UP. Next, press the JOG button.
- 2 Move to **PICTURE** controlling the JOG button UP/DOWN and press the JOG button.
- 3 Move to **SAMSUNG MAGICBright** controlling the JOG button UP/DOWN and press the JOG button. The following screen will appear.



- **Custom**: Customize the contrast and brightness as required.
- **Standard**: Obtain a picture quality suitable for editing documents or using Internet.
- **Cinema**: Obtain the brightness and sharpness of TVs suitable for enjoying video and DVD content.
- **Dynamic Contrast**: Obtain balanced brightness through automatic contrast adjustment.



When the external input is connected through HDMI or DP and **PC/AV Mode** is set to **AV**, **SAMSUNG MAGICBright** has four automatic picture settings (**Dynamic**, **Standard**, **Movie** and **Custom**) that are

preset at the factory. You can activate either **Dynamic**, **Standard**, **Movie** or **Custom**. You can select **Custom** which automatically recalls your personalized picture settings.

- **Dynamic**: Select this mode to view a sharper image than in **Standard** mode.
- **Standard**: Select this mode when the surroundings are bright. This also provides a sharp image.
- **Movie**: Select this mode when the surroundings are dark. This will save power and reduce eye fatigue.
- **Custom**: Select this mode when you want to adjust the image according to your preferences.

4 Move to the desired option controlling the JOG button UP/DOWN and press the JOG button.

5 The selected option will be applied.

3.6 SAMSUNG MAGIC Upscale

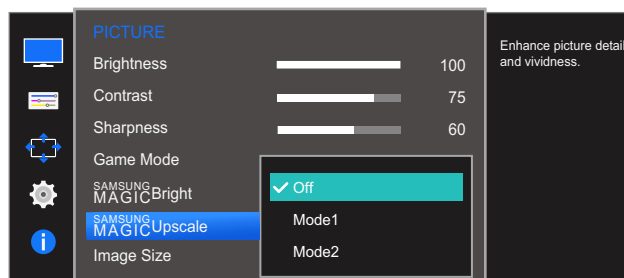
SAMSUNG MAGIC Upscale function can enhance the layers of the picture details and the vividness of the picture.



- The function has more obvious effects on low-resolution pictures.
- This menu is not available when **SAMSUNG MAGIC Bright** is in **Cinema** or **Dynamic Contrast** mode.
- This menu is not available when **Game Mode** is enabled.
- The functions available on the monitor may vary depending on the model. Refer to the actual product.

3.6.1 Configuring SAMSUNG MAGIC Upscale

- 1 When the Function Key Guide appears, select [] by moving the JOG button UP. Next, press the JOG button.
- 2 Move to **PICTURE** controlling the JOG button UP/DOWN and press the JOG button.
- 3 Move to **SAMSUNG MAGIC Upscale** controlling the JOG button UP/DOWN and press the JOG button. The following screen will appear.



Comparing with **Mode1**, **Mode2** has a stronger effect.

- 4 Move to the desired option controlling the JOG button UP/DOWN and press the JOG button.
- 5 The selected option will be applied.


3.7 Image Size

Change the picture size.

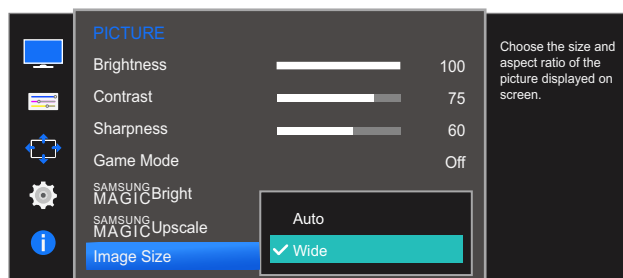


The functions available on the monitor may vary depending on the model. Refer to the actual product.

3.7.1 Changing the Image Size

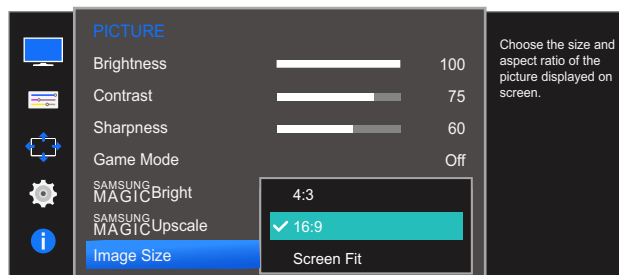
- 1 When the Function Key Guide appears, select  by moving the JOG button UP. Next, press the JOG button.
- 2 Move to **PICTURE** controlling the JOG button UP/DOWN and press the JOG button.
- 3 Move to **Image Size** controlling the JOG button UP/DOWN and press the JOG button. The following screen will appear.

In **PC** mode



- **Auto**: Display the picture according to the aspect ratio of the input source.
- **Wide**: Display the picture in full screen regardless of the aspect ratio of the input source.

In **AV** mode



- **4:3**: Display the picture with an aspect ratio of 4:3. Suitable for videos and standard broadcasts.
- **16:9**: Display the picture with an aspect ratio of 16:9.
- **Screen Fit**: Display the picture with the original aspect ratio without cutting off.



- Changing the screen size is available when the following conditions are satisfied.
- The function may not be supported depending on the ports provided with the product.
 - A digital output device is connected using the HDMI cable.
 - A digital output device is connected using the DP cable.
 - The input signal is 480p, 576p, 720p, or 1080p and monitor can display normally (Not every model can support all of these signals.).
 - This can only be set when the external input is connected through HDMI, DP and **PC/AV Mode** is set to **AV**.

- 4 Move to the desired option controlling the JOG button UP/DOWN and press the JOG button.
- 5 The selected option will be applied.

3.8 HDMI Black Level

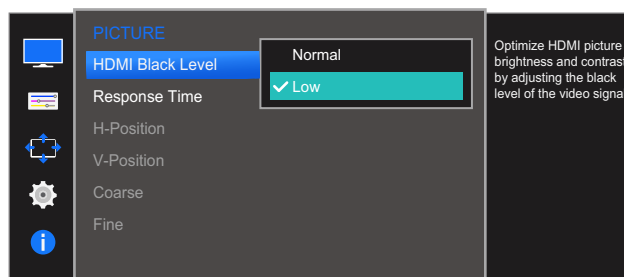
If a DVD player or set-top box is connected to the product via HDMI, image quality degradation (contrast/color degradation, black level, etc.) may occur, depending on the connected source device. In such case, **HDMI Black Level** can be used to adjust the image quality. If this is the case, correct the degraded picture quality using **HDMI Black Level**.



- This function is only available in **HDMI** mode.
- The functions available on the monitor may vary depending on the model. Refer to the actual product.

3.8.1 Configuring the HDMI Black Level Settings

- 1 When the Function Key Guide appears, select [] by moving the JOG button UP. Next, press the JOG button.
- 2 Move to **PICTURE** controlling the JOG button UP/DOWN and press the JOG button.
- 3 Move to **HDMI Black Level** controlling the JOG button UP/DOWN and press the JOG button. The following screen will appear.



- **Normal**: Select this mode when there is no contrast ratio degradation.
 - **Low**: Select this mode to reduce the black level and increase the white level when there is a contrast ratio degradation.
- 4 Move to the desired option controlling the JOG button UP/DOWN and press the JOG button.
 - 5 The selected option will be applied.



- **HDMI Black Level** may not be compatible with some source devices.

3.9 Response Time

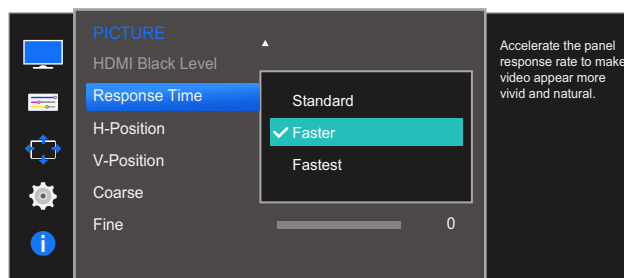
Accelerate the panel response rate to make video appear more vivid and natural.



- It is best to set **Response Time** to **Standard** or **Faster** when you are not viewing a movie.
- The functions available on the monitor may vary depending on the model. Refer to the actual product.

3.9.1 Configuring the Response Time

- 1 When the Function Key Guide appears, select [] by moving the JOG button UP. Next, press the JOG button.
- 2 Move to **PICTURE** controlling the JOG button UP/DOWN and press the JOG button.
- 3 Move to **Response Time** controlling the JOG button UP/DOWN and press the JOG button. The following screen will appear.



- 4 Move to the desired option controlling the JOG button UP/DOWN and press the JOG button.
- 5 The selected option will be applied.

3.10 H-Position & V-Position

H-Position: Move the screen to the left or right.

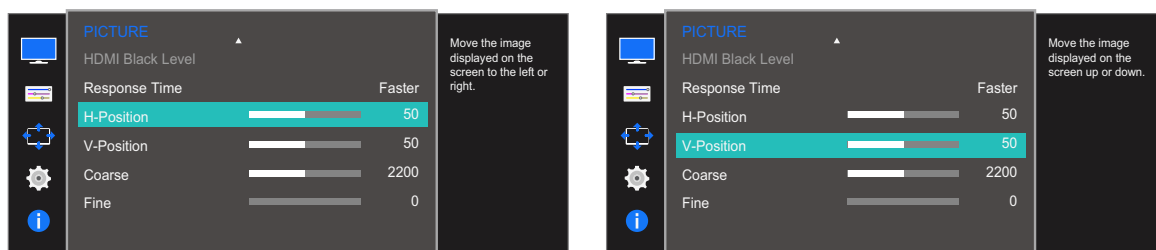
V-Position: Move the screen up or down.



- This menu is available in **Analog** mode only.
- This menu is only available when **Image Size** is set to **Screen Fit** in **AV** Mode. When a 480P or 576P or 720P or 1080P signal is input in **AV** mode and the monitor can display normally, select **Screen Fit** to adjust horizontal position in 0-6 levels.
- The functions available on the monitor may vary depending on the model. Refer to the actual product.

3.10.1 Configuring H-Position & V-Position

- 1 When the Function Key Guide appears, select [] by moving the JOG button UP. Next, press the JOG button.
- 2 Move to **PICTURE** controlling the JOG button UP/DOWN and press the JOG button.
- 3 Move to the **H-Position** or **V-Position** controlling the JOG button UP/DOWN and press the JOG button.



- 4 Adjust the **H-Position** or **V-Position** controlling the JOG button LEFT/RIGHT and press the JOG button.
- 5 The selected option will be applied.

3.11 Coarse

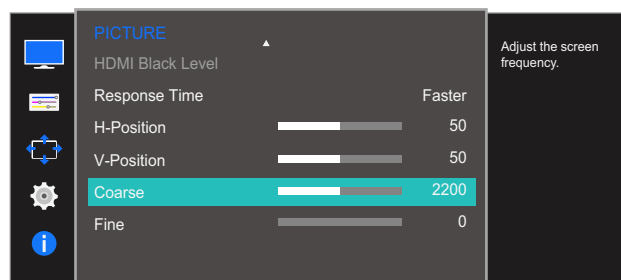
Adjust the screen frequency.



- This menu is available in **Analog** mode only.
- The functions available on the monitor may vary depending on the model. Refer to the actual product.

3.11.1 Adjusting Coarse

- 1 When the Function Key Guide appears, select [] by moving the JOG button UP. Next, press the JOG button.
- 2 Move to **PICTURE** controlling the JOG button UP/DOWN and press the JOG button.
- 3 Move to **Coarse** controlling the JOG button UP/DOWN and press the JOG button.



- 4 Adjust the **Coarse** controlling the JOG button LEFT/RIGHT.
- 5 The selected option will be applied.

3.12 Fine

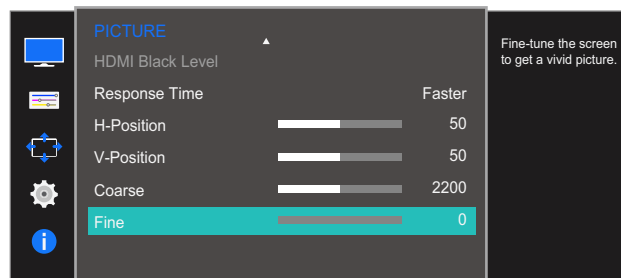
Fine-adjust the screen to obtain a vivid picture.



- This menu is available in **Analog** mode only.
- The functions available on the monitor may vary depending on the model. Refer to the actual product.

3.12.1 Adjusting Fine

- 1 When the Function Key Guide appears, select [] by moving the JOG button UP. Next, press the JOG button.
- 2 Move to **PICTURE** controlling the JOG button UP/DOWN and press the JOG button.
- 3 Move to **Fine** controlling the JOG button UP/DOWN and press the JOG button.



- 4 Adjust the **Fine** controlling the JOG button LEFT/RIGHT.
- 5 The selected option will be applied.

Configuring Tint

A detailed description of each function is provided. Refer to your product for details.

Adjust the tint of the screen. This menu is not available when **SAMSUNG MAGICBright** is set to **Cinema** or **Dynamic Contrast** mode. This menu is not available when **Game Mode** is enabled.

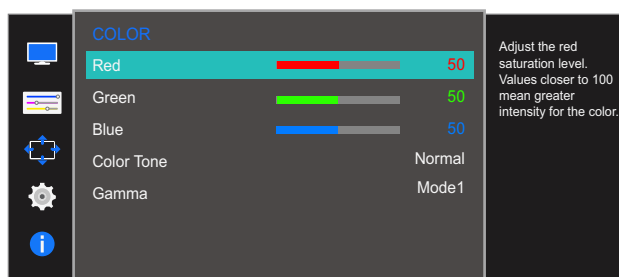
4.1 Red

Adjust the value of the color red in the picture. (Range: 0~100)

A higher value will increase the intensity of the color.

4.1.1 Configuring Red

- 1 When the Function Key Guide appears, select [] by moving the JOG button UP. Next, press the JOG button.
- 2 Move to **COLOR** controlling the JOG button UP/DOWN and press the JOG button.
- 3 Move to **Red** controlling the JOG button UP/DOWN and press the JOG button.



- 4 Adjust the **Red** controlling the JOG button LEFT/RIGHT.
- 5 The selected option will be applied.

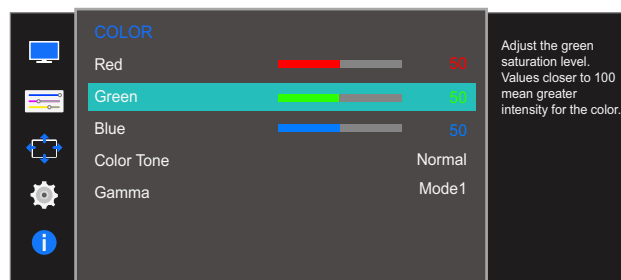
4.2 Green

Adjust the value of the color green in the picture. (Range: 0~100)

A higher value will increase the intensity of the color.

4.2.1 Configuring Green

- 1 When the Function Key Guide appears, select [] by moving the JOG button UP. Next, press the JOG button.
- 2 Move to **COLOR** controlling the JOG button UP/DOWN and press the JOG button.
- 3 Move to **Green** controlling the JOG button UP/DOWN and press the JOG button.



- 4 Adjust the **Green** controlling the JOG button LEFT/RIGHT.
- 5 The selected option will be applied.

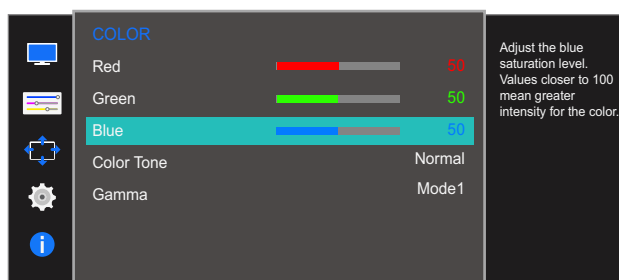
4.3 Blue

Adjust the value of the color blue in the picture. (Range: 0~100)

A higher value will increase the intensity of the color.

4.3.1 Configuring Blue

- 1 When the Function Key Guide appears, select [] by moving the JOG button UP. Next, press the JOG button.
- 2 Move to **COLOR** controlling the JOG button UP/DOWN and press the JOG button.
- 3 Move to **Blue** controlling the JOG button UP/DOWN and press the JOG button.



- 4 Adjust the **Blue** controlling the JOG button LEFT/RIGHT.
- 5 The selected option will be applied.

4.4 Color Tone

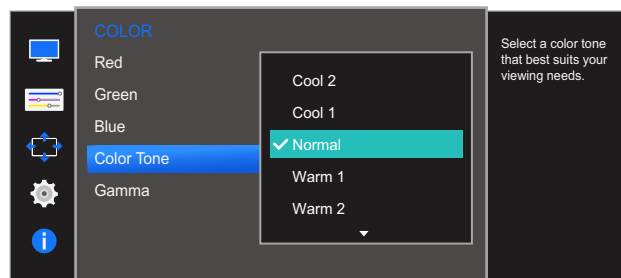
Adjust the general color tone of the picture.



The functions available on the monitor may vary depending on the model. Refer to the actual product.

4.4.1 Configuring the Color Tone Settings

- 1 When the Function Key Guide appears, select [] by moving the JOG button UP. Next, press the JOG button.
- 2 Move to **COLOR** controlling the JOG button UP/DOWN and press the JOG button.
- 3 Move to **Color Tone** controlling the JOG button UP/DOWN and press the JOG button. The following screen will appear.



- **Cool 2**: Set the color temperature to be cooler than **Cool 1**.
- **Cool 1**: Set the color temperature to be cooler than **Normal** mode.
- **Normal**: Display the standard color tone.
- **Warm 1**: Set the color temperature to be warmer than **Normal** mode.
- **Warm 2**: Set the color temperature to be warmer than **Warm 1**.
- **Custom**: Customize the color tone.



When the external input is connected through HDMI, DP and **PC/AV Mode** is set to **AV**, **Color Tone** has four color temperature settings (**Cool**, **Normal**, **Warm** and **Custom**).

- 4 Move to the desired option controlling the JOG button UP/DOWN and press the JOG button.
- 5 The selected option will be applied.

4.5 Gamma

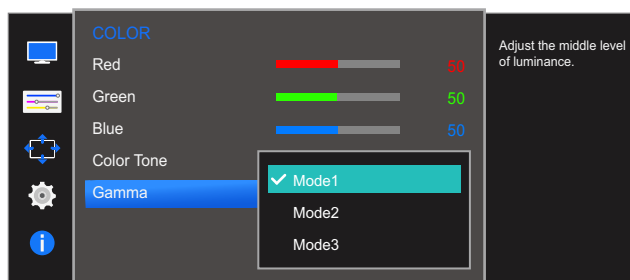
Adjust the mid-range brightness (Gamma) of the picture.



The functions available on the monitor may vary depending on the model. Refer to the actual product.

4.5.1 Configuring Gamma

- 1 When the Function Key Guide appears, select [] by moving the JOG button UP. Next, press the JOG button.
- 2 Move to **COLOR** controlling the JOG button UP/DOWN and press the JOG button.
- 3 Move to **Gamma** controlling the JOG button UP/DOWN and press the JOG button. The following screen will appear.



- 4 Move to the desired option controlling the JOG button UP/DOWN and press the JOG button.
- 5 The selected option will be applied.

A detailed description of each function is provided. Refer to your product for details.

5.1 Language

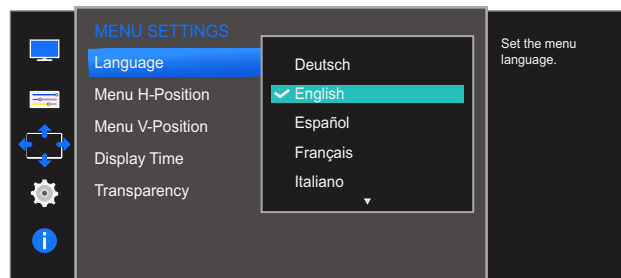
Set the menu language.



- A change to the language setting will only be applied to the onscreen menu display.
- It will not be applied to other functions on your PC.

5.1.1 Configuring Language

- 1 When the Function Key Guide appears, select [MENU] by moving the JOG button UP. Next, press the JOG button.
- 2 Move to **MENU SETTINGS** controlling the JOG button UP/DOWN and press the JOG button.
- 3 Move to **Language** controlling the JOG button UP/DOWN and press the JOG button. The following screen will appear.



- 4 Move to the desired option controlling the JOG button UP/DOWN and press the JOG button.
- 5 The selected option will be applied.

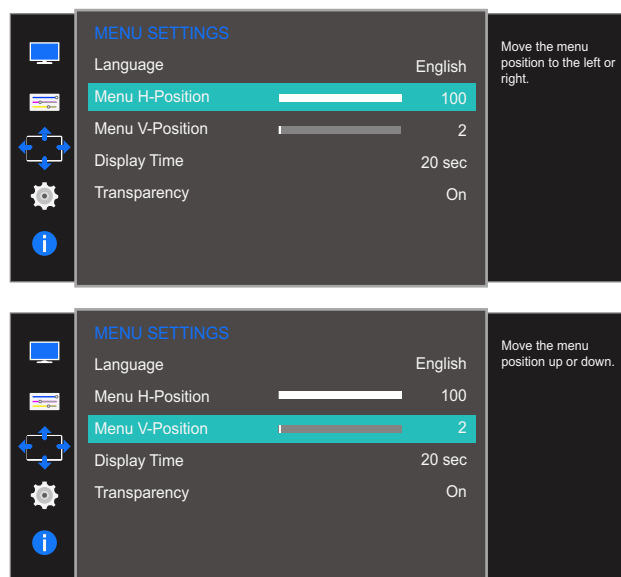
5.2 Menu H-Position & Menu V-Position

Menu H-Position: Move the menu position to the left or right.

Menu V-Position: Move the menu position up or down.

5.2.1 Configuring Menu H-Position & Menu V-Position

- 1 When the Function Key Guide appears, select [MENU] by moving the JOG button UP. Next, press the JOG button.
- 2 Move to **MENU SETTINGS** controlling the JOG button UP/DOWN and press the JOG button.
- 3 Move to the **Menu H-Position** or **Menu V-Position** controlling the JOG button UP/DOWN and press the JOG button.



- 4 Adjust the **Menu H-Position** or **Menu V-Position** controlling the JOG button LEFT/RIGHT and press the JOG button.
- 5 The selected option will be applied.

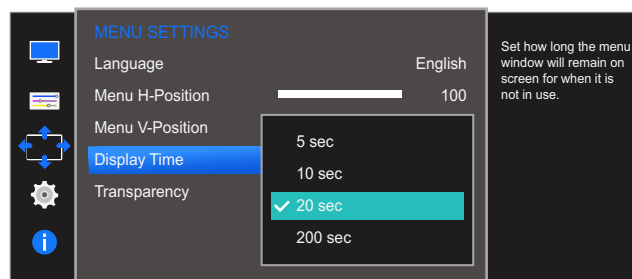
5.3 Display Time

Set the on-screen display (OSD) menu to automatically disappear if the menu is not used for a specified period of time.

Display Time can be used to specify the time after which you want the OSD menu to disappear.

5.3.1 Configuring Display Time

- 1 When the Function Key Guide appears, select [MENU] by moving the JOG button UP.
Next, press the JOG button.
- 2 Move to **MENU SETTINGS** controlling the JOG button UP/DOWN and press the JOG button.
- 3 Move to **Display Time** controlling the JOG button UP/DOWN and press the JOG button.
The following screen will appear.




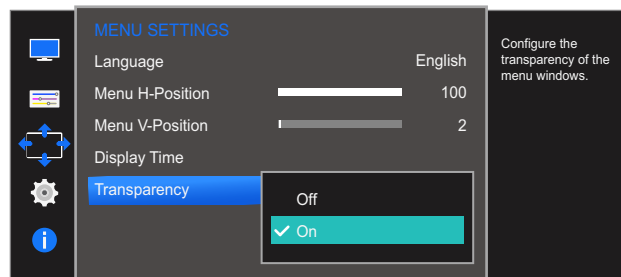
- 4 Move to the desired option controlling the JOG button UP/DOWN and press the JOG button.
- 5 The selected option will be applied.

5.4 Transparency

Set the transparency for the menu windows.

5.4.1 Changing Transparency

- 1 When the Function Key Guide appears, select [] by moving the JOG button UP. Next, press the JOG button.
- 2 Move to **MENU SETTINGS** controlling the JOG button UP/DOWN and press the JOG button.
- 3 Move to **Transparency** controlling the JOG button UP/DOWN and press the JOG button. The following screen will appear.



- 4 Move to the desired option controlling the JOG button UP/DOWN and press the JOG button.
- 5 The selected option will be applied.

A detailed description of each function is provided. Refer to your product for details.

6.1 Reset All

Return all the settings for the product to the default factory settings.

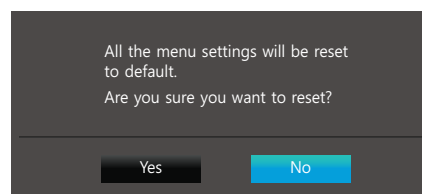
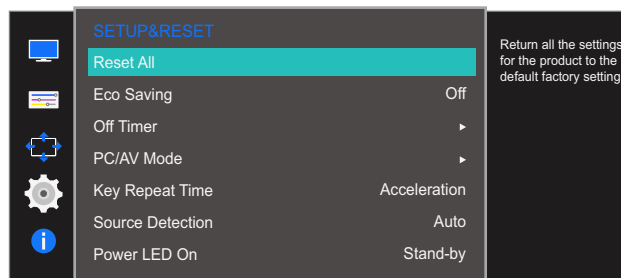


The functions available on the monitor may vary depending on the model. Refer to the actual product.

6.1.1 Initializing Settings (Reset All)

- 1 When the Function Key Guide appears, select [] by moving the JOG button UP. Next, press the JOG button.
- 2 Move to **SETUP&RESET** controlling the JOG button UP/DOWN and press the JOG button.
- 3 Move to **Reset All** controlling the JOG button UP/DOWN and press the JOG button.

The following screen will appear.



- 4 Move to the desired option controlling the JOG button LEFT/RIGHT and press the JOG button.
- 5 The selected option will be applied.


6.2 Eco Saving

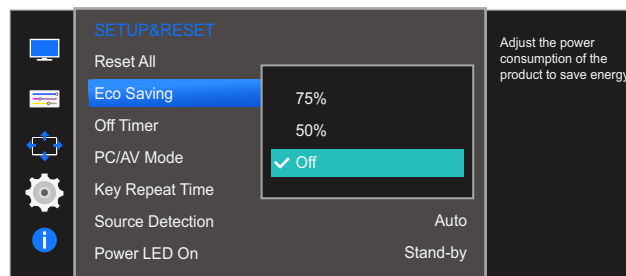
The **Eco Saving** function reduces power consumption by controlling the electric current used by the monitor panel.



- This menu is not available when **SAMSUNG MAGICBright** is in **Dynamic Contrast** mode.
- This menu is not available when **Game Mode** is enabled.
- The functions available on the monitor may vary depending on the model. Refer to the actual product.

6.2.1 Configuring Eco Saving

- 1 When the Function Key Guide appears, select [] by moving the JOG button UP.
Next, press the JOG button.
- 2 Move to **SETUP&RESET** controlling the JOG button UP/DOWN and press the JOG button.
- 3 Move to **Eco Saving** controlling the JOG button UP/DOWN and press the JOG button.
The following screen will appear.



- **75%:** Change the monitor power consumption to 75% of the default level.
 - **50%:** Change the monitor power consumption to 50% of the default level.
 - **Off:** Deactivate the **Eco Saving** function.
- 4 Move to the desired option controlling the JOG button UP/DOWN and press the JOG button.
 - 5 The selected option will be applied.

6.3 Off Timer

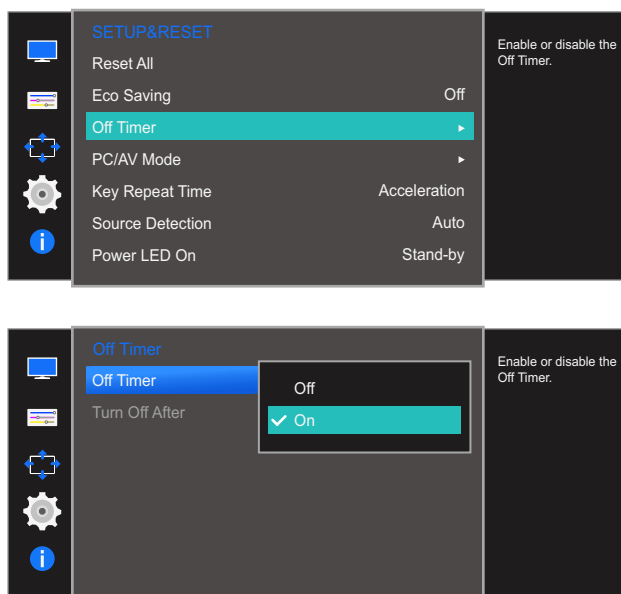
You can set the product to automatically turn off.



The functions available on the monitor may vary depending on the model. Refer to the actual product.

6.3.1 Configuring Off Timer

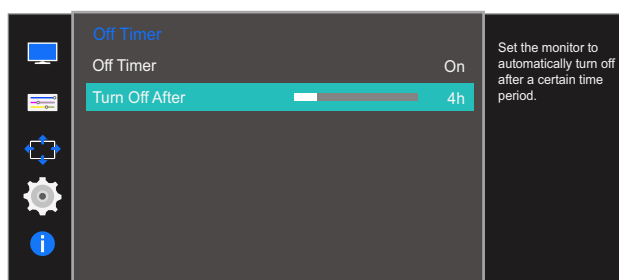
- 1 When the Function Key Guide appears, select [] by moving the JOG button UP. Next, press the JOG button.
- 2 Move to **SETUP&RESET** controlling the JOG button UP/DOWN and press the JOG button.
- 3 Move to **Off Timer** controlling the JOG button UP/DOWN and press the JOG button.
- 4 Move to **Off Timer** controlling the JOG button UP/DOWN and press the JOG button. The following screen will appear.



- **Off:** Deactivate the off timer so that the product does not power off automatically.
 - **On:** Activate the off timer so that the product powers off automatically.
- 5 Move to the desired option controlling the JOG button UP/DOWN and press the JOG button.
 - 6 The selected option will be applied.

6.3.2 Configuring Turn Off After

- 1 When the Function Key Guide appears, select [] by moving the JOG button UP. Next, press the JOG button.
- 2 Move to **SETUP&RESET** controlling the JOG button UP/DOWN and press the JOG button.
- 3 Move to **Off Timer** controlling the JOG button UP/DOWN and press the JOG button.
- 4 Move to **Turn Off After** controlling the JOG button UP/DOWN and press the JOG button. The following screen will appear.



- 5 Adjust the **Turn Off After** controlling the JOG button LEFT/RIGHT.
- 6 The selected option will be applied.



- The off timer can be set within a range of 1 to 23 hours. The product will automatically power off after the specified number of hours.
- This option is only available when **Off Timer** is set to **On**.
- For products for the market in some regions, the **Off Timer** is set to automatically activate 4 hours after the product powers on. This is done in accordance with power supply regulations. If you do not want the timer to activate, go to **MENU** → **SETUP&RESET** and set **Off Timer** to **Off**.

6.4 PC/AV Mode

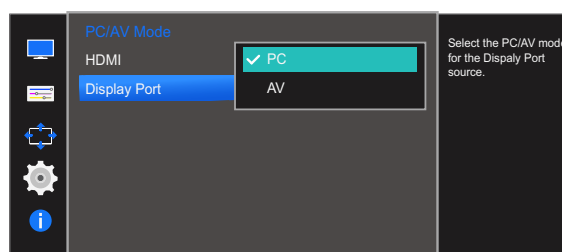
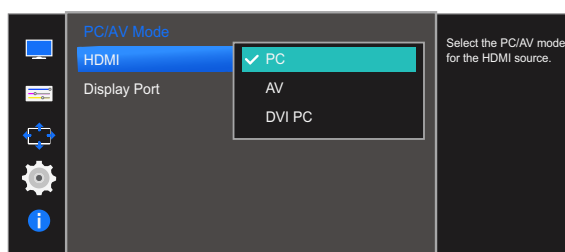
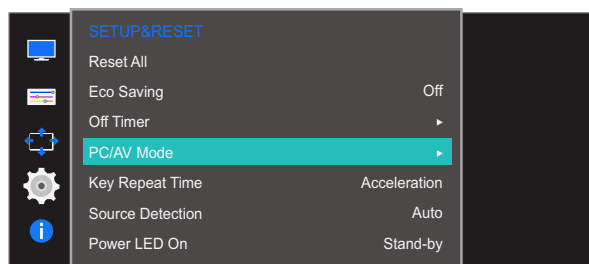
Set **PC/AV Mode** to **AV**. The picture size will be enlarged. This option is useful when you view a movie.



- This function does not support **Analog** mode.
- Supplied for the wide models only such as 16:9 or 16:10.
- If the monitor (when set to HDMI or DisplayPort) is in power saving mode or is displaying the message **Check Signal Cable**, press the MENU button to display the On Screen Display(OSD). You can select **PC** or **AV**.
- The functions available on the monitor may vary depending on the model. Refer to the actual product.

6.4.1 Configuring PC/AV Mode

- 1 When the Function Key Guide appears, select [] by moving the JOG button UP. Next, press the JOG button.
- 2 Move to **SETUP&RESET** controlling the JOG button UP/DOWN and press the JOG button.
- 3 Move to **PC/AV Mode** controlling the JOG button UP/DOWN and press the JOG button.
- 4 Move to the **HDMI** or **Display Port** controlling the JOG button UP/DOWN and press the JOG button. The following screen will appear.



- 5 Move to the desired option controlling the JOG button UP/DOWN and press the JOG button.
- 6 The selected option will be applied.

6.5 Key Repeat Time

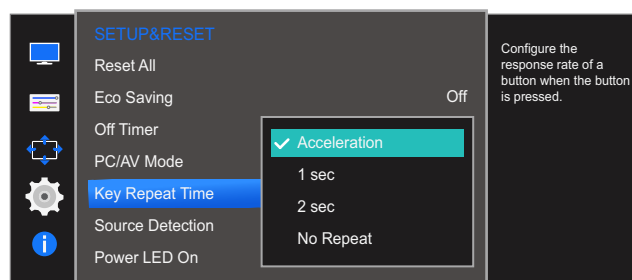
Control the response rate of a button when the button is pressed.



The functions available on the monitor may vary depending on the model. Refer to the actual product.

6.5.1 Configuring Key Repeat Time

- 1 When the Function Key Guide appears, select [] by moving the JOG button UP. Next, press the JOG button.
- 2 Move to **SETUP&RESET** controlling the JOG button UP/DOWN and press the JOG button.
- 3 Move to **Key Repeat Time** controlling the JOG button UP/DOWN and press the JOG button. The following screen will appear.



- **Acceleration**, **1 sec**, or **2 sec** can be selected. If **No Repeat** is selected, a command responds only once when a button is pressed.
- 4 Move to the desired option controlling the JOG button UP/DOWN and press the JOG button.
 - 5 The selected option will be applied.

6.6 Source Detection

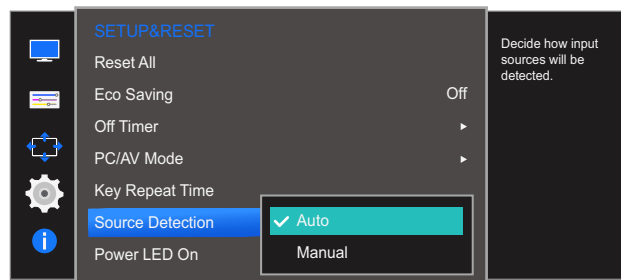
You can activate **Source Detection**.



The functions available on the monitor may vary depending on the model. Refer to the actual product.

6.6.1 Configuring Source Detection

- 1 When the Function Key Guide appears, select [] by moving the JOG button UP. Next, press the JOG button.
- 2 Move to **SETUP&RESET** controlling the JOG button UP/DOWN and press the JOG button.
- 3 Move to **Source Detection** controlling the JOG button UP/DOWN and press the JOG button. The following screen will appear.




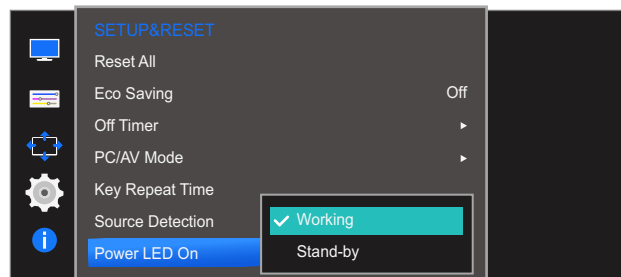
- **Auto**: The input source is automatically recognized.
 - **Manual**: Manually select an input source.
- 4 Move to the desired option controlling the JOG button UP/DOWN and press the JOG button.
 - 5 The selected option will be applied.

6.7 Power LED On

Configure the settings to enable or disable the power LED located at the lower part of the product.

6.7.1 Configuring Power LED On

- 1 When the Function Key Guide appears, select [] by moving the JOG button UP.
Next, press the JOG button.
- 2 Move to **SETUP&RESET** controlling the JOG button UP/DOWN and press the JOG button.
- 3 Move to **Power LED On** controlling the JOG button UP/DOWN and press the JOG button.
The following screen will appear.



- **Working:** The power LED is on when the product is turned on.
 - **Stand-by:** The power LED is on when the product is turned off.
- 4 Move to the desired option controlling the JOG button UP/DOWN and press the JOG button.
 - 5 The selected option will be applied.


INFORMATION Menu and Others

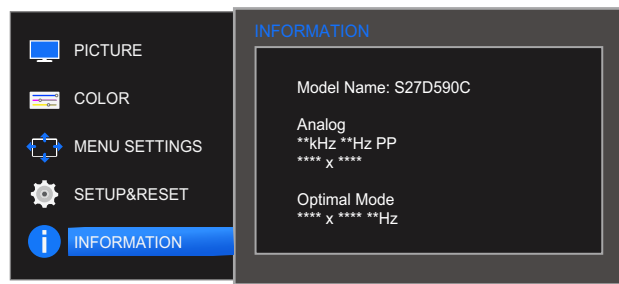
A detailed description of each function is provided. Refer to your product for details.

7.1 INFORMATION

View the current input source, frequency and resolution.

7.1.1 Displaying INFORMATION

- 1 When the Function Key Guide appears, select [] by moving the JOG button UP. Next, press the JOG button.
- 2 Move to **INFORMATION** controlling the JOG button UP/DOWN and press the JOG button. The following screen will appear.



The displayed menu items may vary depending on the model.

7.2 Configuring Brightness and Contrast in the Initial Screen

Adjust the **Brightness**, **Contrast** by moving the JOG button when the Direct Key Guide is displayed on the screen.



Brightness :

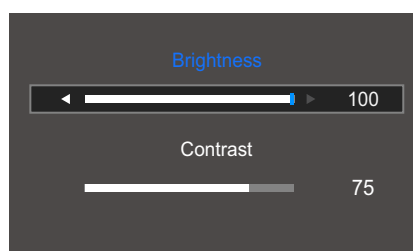
- This menu is not available when **SAMSUNG MAGICBright** is set to **Dynamic Contrast** mode.
- This menu is not available when **Eco Saving** is enabled.



Contrast :

- This option is not available when **SAMSUNG MAGICBright** is in **Cinema** or **Dynamic Contrast** mode.
- This menu is not available when **Game Mode** is enabled.

- 1 When you control the JOG button UP, the following screen will appear.
The following screen will appear.



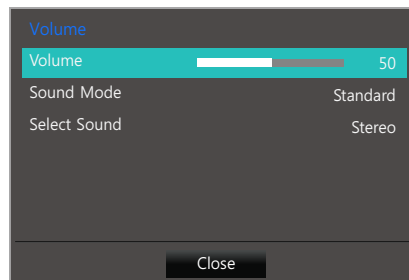
- 2 Move to **Brightness** → **Contrast**, **Contrast** → **Brightness**, controlling the JOG button UP/DOWN.
- 3 Adjust the **Brightness** and **Contrast** controlling the JOG button LEFT/RIGHT.

7.3 Configuring Volume in the Initial Screen

7.3.1 Volume

Adjust the **Volume** by moving the JOG button when the Direct Key Guide is displayed on the screen.

- 1 When you control the JOG button LEFT/RIGHT, the following screen will appear.



- 2 Adjust the **Volume** controlling the JOG button LEFT/RIGHT.



If the audio quality of a connected input device is poor, the Auto Mute function on the product may mute the sound or cause choppy audio when applying the headphones or speakers.

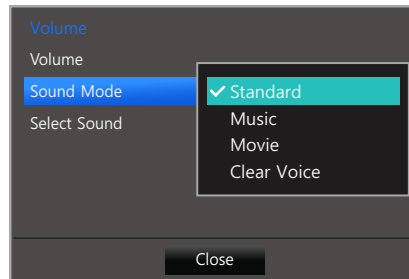
Set the input volume for the input device to at least 20% and control the volume using the volume control (JOG button LEFT/RIGHT) on the product.

- What is Auto Mute?
The function mutes the audio to improve sound effect when there is sound noise or when the input signal is weak, usually due to a problem with the volume of an input device.

7.3.2 Sound Mode

Adjust the **Sound Mode** by moving the JOG button when the Direct Key Guide is displayed on the screen.

- 1 When you control the JOG button LEFT/RIGHT, the following screen will appear.

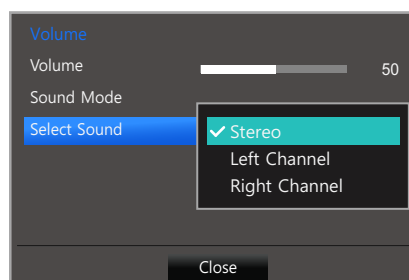


- **Standard:** Selects the normal sound mode.
 - **Music:** Emphasizes music over voices.
 - **Movie:** Provides the best sound for movies.
 - **Clear Voice:** Emphasizes voices over other sounds.
- 2 Move to the desired option controlling the JOG button UP/DOWN and press the JOG button.
 - 3 The selected option will be applied.

7.3.3 Select Sound

Adjust the **Select Sound** by moving the JOG button when the Direct Key Guide is displayed on the screen.

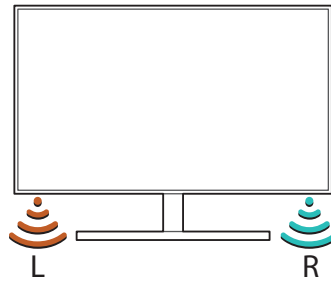
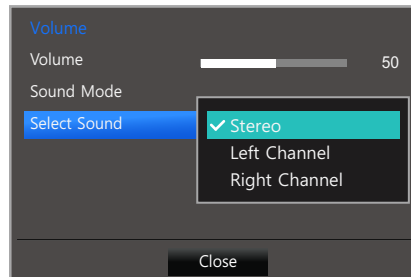
- 1 When you control the JOG button LEFT/RIGHT, the following screen will appear.



- **Stereo:** Enable the sound both from the left and right speakers.
 - **Left Channel:** Set the left and right speakers to play only the left channel of the sound source.
 - **Right Channel:** Set the left and right speakers to play only the right channel of the sound source.
- 2 Move to the desired option controlling the JOG button UP/DOWN and press the JOG button.
 - 3 The selected option will be applied.

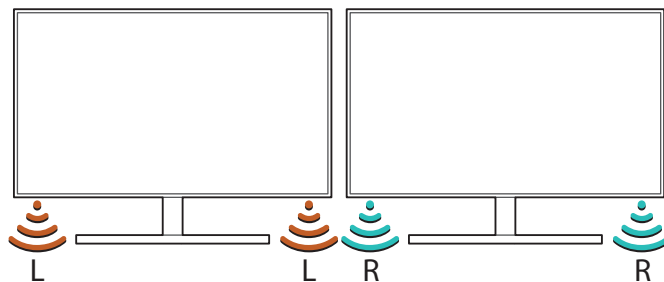
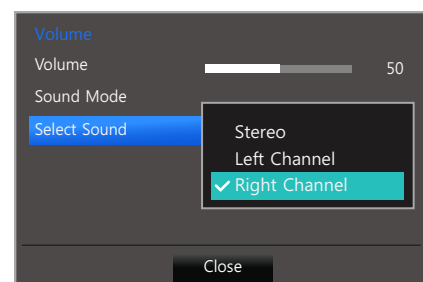
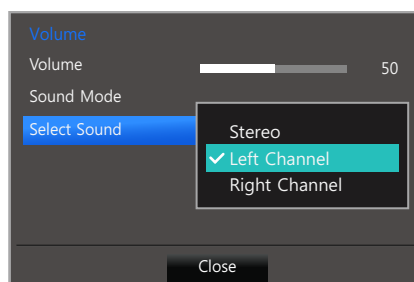
If using a single monitor

- 1 Go to the select sound mode menu and select **Stereo**.



If using two monitors

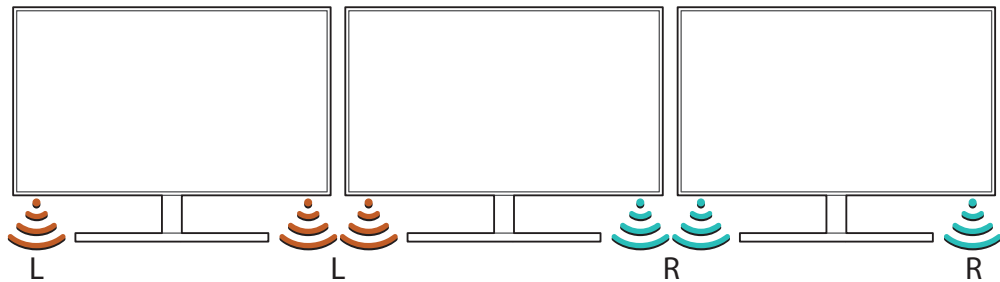
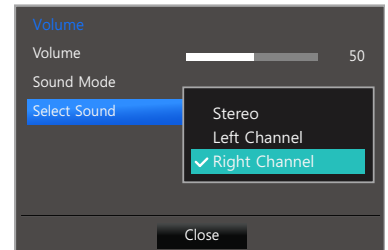
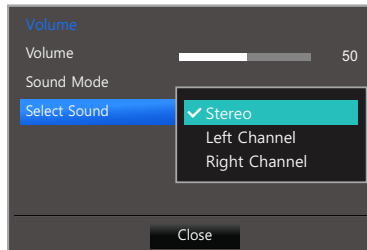
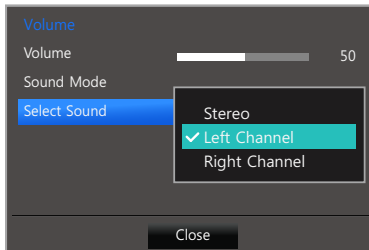
- 1 Go to the select sound mode menu.
Select **Left Channel** for the monitor on your left. Select **Right Channel** for the monitor on your right.



If using three monitors or more

- 1 Go to the select sound mode menu.

Select **Left Channel** for the monitor on your left. Select **Stereo** for the monitor in the middle. Select **Right Channel** for the monitor on your right.



To use multiple monitors, connect the monitors to your PC via HDMI or D-sub cables.
("2.2 Connecting and Using a PC")

8.1 Easy Setting Box



Easy Setting Box

"Easy Setting Box" enables users to use the monitor by partitioning multiple sections.

8.1.1 Installing the Software

1 Insert the installation CD into the CD-ROM drive.

2 Select the "Easy Setting Box" setup program.



If the pop-up screen for the software installation does not appear on the main screen, find and double-click the "Easy Setting Box" setup file on the CD-ROM.

3 When the Installation Wizard appears, click **Next**.

4 Follow the instructions given on the screen to proceed with installation.



- The software may not work properly if you do not restart the computer after the installation.
- The "Easy Setting Box" icon may not appear depending on the computer system and the product specifications.
- If the shortcut icon does not appear, press the F5 key.

Restrictions and Problems with the Installation ("Easy Setting Box")

The "Easy Setting Box" installation may be affected by the Graphics Card, Motherboard and the Networking Environment.

System Requirements

OS

- Windows XP 32Bit/64Bit
- Windows Vista 32Bit/64Bit
- Windows 7 32Bit/64Bit
- Windows 8 32Bit/64Bit

Hardware

- At least 32MB of memory
- At least 60MB of free space on the hard disk drive

8.1.2 Removing the Software

Click **Start**, select **Settings/Control Panel**, and then double-click **Add or Remove Programs**.

Select "Easy Setting Box" from the program list and click the **Add/Delete** button.

9.1 Requirements Before Contacting Samsung Customer Service Center

9.1.1 Testing the Product



Before calling Samsung Customer Service Center, test your product as follows. If the problem persists, contact Samsung Customer Service Center.

Check if your product is operating normally by using the product test function.

If the screen is turned off and the power indicator blinks even though the product is properly connected to a PC, perform a self-diagnosis test.

- 1 Power off both the PC and product.
- 2 Disconnect the cables from the product.
- 3 Power on the product.
- 4 If the message **Check Signal Cable** appears, the product is working normally.



If the screen remains blank, check the PC system, video controller and cable.

9.1.2 Checking the Resolution and Frequency

For a mode that exceeds the supported resolution (refer to "10.3 Standard Signal Mode Table"), the message **Not Optimum Mode** will appear for a short time.

9.1.3 Check the following.

Installation issue (PC mode)

Issues	Solutions
The screen keeps switching on and off.	Check the cable connection between the product and PC, and ensure the connectors are locked. (Refer to "2.2 Connecting and Using a PC")

Screen issue

Issues	Solutions
The power LED is off. The screen will not switch on.	Check that the power cable is connected properly. (Refer to "2.2 Connecting and Using a PC")
The message Check Signal Cable appears.	Check that the cable is properly connected to the product. (Refer to "2.2 Connecting and Using a PC")
	Check that the device connected to the product is powered on.
Not Optimum Mode is displayed.	This message appears when the signal from the graphics card exceeds the maximum resolution or frequency for the product.
	Change the maximum resolution and frequency to suit the product performance, referring to Standard Signal Mode Table (page 83).
The images on the screen look distorted.	Check the cable connection to the product (Refer to "2.2 Connecting and Using a PC")
The screen is not clear. The screen is blurry.	Adjust Coarse (page 49) and Fine (page 50).
	Remove any accessories (video extension cable, etc.) and try again.
	Set the resolution and frequency to the recommended level.
The screen appears unstable and shaky.	Check that the resolution and frequency for the PC are within the range of resolution and frequency compatible with the product. Next, if required, change the settings, referring to Standard Signal Mode Table (page 83) in this manual and the INFORMATION menu on the product.
There are shadows or ghost images left on the screen.	
The screen is too bright. The screen is too dark.	Adjust Brightness (page 37) and Contrast (page 38).
Screen color is inconsistent.	Change the COLOR settings. (Refer to "Configuring Tint")
The colors on the screen have a shadow and are distorted.	Change the COLOR settings. (Refer to "Configuring Tint")
White does not really look white.	Change the COLOR settings. (Refer to "Configuring Tint")

Issues	Solutions
There is no image on the screen and the power LED blinks every 0.5 to 1 second.	The product is operating in power-saving mode.
	Press any key on the keyboard or move the mouse to return to normal operating mode.

Sound issue

Issues	Solutions
There is no sound.	Check the connection of the audio cable or adjust the volume.
	Check the volume.
The volume is too low.	Adjust the volume.
	If the volume is still low after turning it up to the maximum level, adjust the volume on your PC sound card or software program.
Sound cannot be played in stereo.	Check that the correct sound mode(page 71) is selected.

Source device issue

Issues	Solutions
A beeping sound is heard when my PC is booting.	If a beeping sound is heard when your PC is booting, have your PC serviced.



The LED lights on the frame of the product may be seen depending on the user's viewing angle.

The light is harmless to people and has no bearing on product features and performance. The product is safe to use.

9.2 Q & A

Question	Answer
How can I change the frequency?	<p>Set the frequency on your graphics card.</p> <ul style="list-style-type: none"> • Windows XP: Go to Control Panel → Appearance and Themes → Display → Settings → Advanced → Monitor, and adjust Refresh rate under Monitor settings. • Windows ME/2000: Go to Control Panel → Display → Settings → Advanced → Monitor, and adjust Refresh rate under Monitor settings. • Windows Vista: Go to Control Panel → Appearance and Personalization → Personalization → Display Settings → Advanced Settings → Monitor, and adjust Refresh rate under Monitor settings. • Windows 7: Go to Control Panel → Appearance and Personalization → Display → Screen Resolution → Advanced settings → Monitor, and adjust Refresh rate under Monitor settings. • Windows 8: Go to Settings → Control Panel → Appearance and Personalization → Display → Screen Resolution → Advanced settings → Monitor, and adjust Refresh rate under Monitor settings.

Question	Answer
How can I change the resolution?	<ul style="list-style-type: none"> • Windows XP: Go to Control Panel → Appearance and Themes → Display → Settings, and adjust the resolution. • Windows ME/2000: Go to Control Panel → Display → Settings, and adjust the resolution. • Windows Vista: Go to Control Panel → Appearance and Personalization → Personalize → Display Settings, and adjust the resolution. • Windows 7: Go to Control Panel → Appearance and Personalization → Display → Adjust Resolution, and adjust the resolution. • Windows 8: Go to Settings → Control Panel → Appearance and Personalization → Display → Adjust Resolution, and adjust the resolution.
How do I set power-saving mode?	<ul style="list-style-type: none"> • Windows XP: Set power-saving mode in Control Panel → Appearance and Themes → Display → Screen Saver Settings or BIOS SETUP on the PC. • Windows ME/2000: Set power-saving mode in Control Panel → Display → Screen Saver Settings or BIOS SETUP on the PC. • Windows Vista: Set power-saving mode in Control Panel → Appearance and Personalization → Personalize → Screen Saver Settings or BIOS SETUP on the PC. • Windows 7: Set power-saving mode in Control Panel → Appearance and Personalization → Personalize → Screen Saver Settings or BIOS SETUP on the PC. • Windows 8: Set power-saving mode in Settings → Control Panel → Appearance and Personalization → Personalize → Screen Saver Settings or BIOS SETUP on the PC.



Refer to the user manual for your PC or graphics card for further instructions on adjustment.



Specifications

10.1 General

Model Name		S27D590C
Panel	Size	27 Inches (68 cm)
	Display area	597.9 mm (H) x 336.3 mm (V) 23.5 Inches (H) x 13.2 Inches (V)
	Pixel Pitch	0.3114 mm (H) x 0.3114 mm (V) 0.01226 Inches (H) x 0.01226 Inches (V)
Power Supply		AC 100 - 240 V~ (+/- 10 %), 50/60 Hz ± 3 Hz Refer to the label at the back of the product as the standard voltage can vary in different countries.
Dimensions (WxHxD) / Weight	Without Stand	623.5 x 366 x 59.5 mm/ 5 kg 24.5 x 14.4 x 2.3 Inches / 11.0 lbs
	With Stand	623.5 x 463 x 182 mm / 5.6 kg 24.5 x 18.2 x 7.2 Inches / 12.3 lbs
Environmental considerations	Operating	Temperature : 50°F ~ 104°F (10°C ~ 40°C) Humidity : 10 % – 80 %, non-condensing
	Storage	Temperature : -4°F ~ 113°F (-20°C ~ 45°C) Humidity : 5 % – 95 %, non-condensing



Plug-and-Play

This monitor can be installed and used with any Plug-and-Play compatible systems. Two-way data exchange between the monitor and PC system optimizes the monitor settings. Monitor installation takes place automatically. However, you can customize the installation settings if desired.



Panel Dots (Pixels)

Due to the nature of the manufacturing of this product, approximately 1 pixel per million (1ppm) may be brighter or darker on the LCD panel. This does not affect product performance.



The above specifications are subject to change without notice to improve quality.



This device is a Class B digital apparatus.

(USA only)

Dispose unwanted electronics through an approved recycler.

To find the nearest recycling location, go to our website:

www.samsung.com/recyclingdirect or call, (877) 278 - 0799



10.2 PowerSaver

The power-saving function of this product reduces power consumption by switching off the screen and changing the color of the power LED if the product is not used for a specified period of time. The power is not turned off in power-saving mode. To switch the screen back on, press any key on the keyboard or move the mouse. Power-saving mode functions only when the product is connected to a PC that has a power-saving function.

PowerSaver	Power Consumption	Power saving mode	Power off (Power button)
Power Indicator	Off	Blinking	On
Power Consumption	35 W	0.3 W	0.3 W



- The power consumption level can vary in different operating conditions or when settings are changed.
- To reduce the power consumption to 0, disconnect the power cord. Disconnect the power cable if you will not be using the product for an extended period of time (during vacation, etc.)

10.3 Standard Signal Mode Table



- This product can be set to only one resolution for each screen size to obtain the optimum picture quality due to the nature of the panel. Therefore, a resolution other than the specified resolution may degrade the picture quality. To avoid this, it is recommended that you select the optimum resolution specified for the screen size of your product.
- Check the frequency when you exchange a CDT monitor (connected to a PC) for an LCD monitor. If the LCD monitor does not support 85Hz, change the vertical frequency to 60Hz using the CDT monitor before you exchange it with the LCD monitor.

Synchronization	Horizontal Frequency	30 ~ 81 kHz
	Vertical Frequency	56 ~ 72 Hz
Resolution	Optimum Resolution	1920 x 1080 @ 60 Hz
	Maximum Resolution	1920 x 1080 @ 60 Hz

If a signal that belongs to the following standard signal modes is transmitted from your PC, the screen will automatically be adjusted. If the signal transmitted from the PC does not belong to the standard signal modes, the screen may be blank even though the power LED turns on. In such a case, change the settings according to the following table by referring to the graphics card user manual.

Resolution	Horizontal Frequency (kHz)	Vertical Frequency (Hz)	Pixel Clock (MHz)	Sync Polarity (H/V)
IBM, 720 x 400	31.469	70.087	28.322	-/+
MAC, 640 x 480	35.000	66.667	30.240	-/-
VESA, 640 x 480	31.469	59.940	25.175	-/-
VESA, 800 x 600	35.156	56.250	36.000	+/+
VESA, 800 x 600	37.879	60.317	40.000	+/+
VESA, 1024 x 768	48.363	60.004	65.000	-/-
VESA, 1024 x 768	56.476	70.069	75.000	-/-
VESA, 1280 x 720	45.000	60.000	74.250	+/+
VESA, 1280 x 800	49.702	59.810	83.500	-/+
VESA, 1280 x 1024	63.981	60.020	108.000	+/+
VESA, 1440 x 900	55.935	59.887	106.500	-/+
VESA, 1600 x 900 (RB)	60.000	60.000	108.000	+/+
VESA, 1680 x 1050	65.290	59.954	146.250	-/+
VESA, 1920 x 1080	67.500	60.000	148.500	+/+



- Horizontal Frequency

The time required to scan a single line from the left to the right side of the screen is called a horizontal cycle. The reciprocal number of a horizontal cycle is called horizontal frequency. Horizontal frequency is measured in kHz.

- Vertical Frequency

Repeating the same picture dozens of times per second allows you to view natural pictures. The repeat frequency is called "vertical frequency" or "refresh rate" and is indicated in Hz.

Contact SAMSUNG WORLD WIDE



If you have any questions or comments relating to Samsung products, please contact the SAMSUNG customer care center.

NORTH AMERICA		
U.S.A	1-800-SAMSUNG (726-7864)	http://www.samsung.com/us/support
CANADA	1-800-SAMSUNG (726-7864)	http://www.samsung.com/ca/support (English) http://www.samsung.com/ca_fr/support (French)
LATIN AMERICA		
ARGENTINE	0800-333-3733	http://www.samsung.com/ar/support
BOLIVIA	800-10-7260	http://www.samsung.com/cl/support
BRAZIL	0800-124-421 (Demais cidades e regiões) 4004-0000 (Capitais e grandes centros)	http://www.samsung.com/br/support
CHILE	800-SAMSUNG (726-7864)	http://www.samsung.com/cl/support
COLOMBIA	Bogotá 600 12 72 Gratis desde cualquier parte del país 01 8000 112 112 ó desde su celular #SAM(726)	http://www.samsung.com/co/support
COSTA RICA	0-800-507-7267 00-800-1-SAMSUNG (726-7864)	http://www.samsung.com/latin/support (Spanish) http://www.samsung.com/latin_en/support (English)
DOMINICA	1-800-751-2676	http://www.samsung.com/latin/support (Spanish) http://www.samsung.com/latin_en/support (English)
ECUADOR	1-800-10-72670 1-800-SAMSUNG (72-6786)	http://www.samsung.com/latin/support (Spanish) http://www.samsung.com/latin_en/support (English)

LATIN AMERICA		
EL SALVADOR	800-6225	http://www.samsung.com/latin/support (Spanish) http://www.samsung.com/latin_en/support (English)
GUATEMALA	1-800-299-0013 1-800-299-0033	http://www.samsung.com/latin/support (Spanish) http://www.samsung.com/latin_en/support (English)
HONDURAS	800-27919267 800-2791-9111	http://www.samsung.com/latin/support (Spanish) http://www.samsung.com/latin_en/support (English)
JAMAICA	1-800-234-7267 1-800-SAMSUNG (726-7864)	http://www.samsung.com/latin_en/support (English)
MEXICO	01-800-SAMSUNG (726-7864)	http://www.samsung.com/mx/support
NICARAGUA	001-800-5077267	http://www.samsung.com/latin/support (Spanish) http://www.samsung.com/latin_en/support (English)
PANAMA	800-7267 800-0101	http://www.samsung.com/latin/support (Spanish) http://www.samsung.com/latin_en/support (English)
PARAGUAY	009-800-542-0001	http://www.samsung.com/latin/support (Spanish) http://www.samsung.com/latin_en/support (English)
PERU	0-800-777-08	http://www.samsung.com/pe/support
PUERTO RICO	1-800-682-3180	http://www.samsung.com/latin/support (Spanish) http://www.samsung.com/latin_en/support (English)
TRINIDAD & TOBAGO	1-800-SAMSUNG (726-7864)	http://www.samsung.com/latin/support (Spanish) http://www.samsung.com/latin_en/support (English)

LATIN AMERICA		
URUGUAY	000-405-437-33	http://www.samsung.com/latin/support (Spanish) http://www.samsung.com/latin_en/support (English)
VENEZUELA	0-800-SAMSUNG (726-7864)	http://www.samsung.com/ve/support

EUROPE		
AUSTRIA	0800 - SAMSUNG (0800 - 7267864)	http://www.samsung.com/at/support
BELGIUM	02-201-24-18	http://www.samsung.com/be/support (Dutch) http://www.samsung.com/be_fr/support (French)
BOSNIA	051 331 999	http://www.samsung.com/support
BULGARIA	800 111 31, Безплатна телефонна линия	http://www.samsung.com/bg/support
CROATIA	072 726 786	http://www.samsung.com/hr/support
CYPRUS	8009 4000 only from landline, toll free	http://www.samsung.com/gr/support
CZECH	800 - SAMSUNG (800-726786)	http://www.samsung.com/cz/support
	Samsung Electronics Czech and Slovak, s.r.o. V Parku 2343/24, 148 00 - Praha 4	
DENMARK	70 70 19 70	http://www.samsung.com/dk/support
EIRE	0818 717100	http://www.samsung.com/ie/support
ESTONIA	800-7267	http://www.samsung.com/ee/support
FINLAND	030-6227 515	http://www.samsung.com/fi/support
FRANCE	01 48 63 00 00	http://www.samsung.com/fr/support

EUROPE		
GERMANY	0180 6 SAMSUNG bzw. 0180 6 7267864* (*0,20 €/Anruf aus dem dt. Festnetz, aus dem Mobilfunk max. 0,60 €/Anruf)	http://www.samsung.com/de/ support
GREECE	80111-SAMSUNG (80111 726 7864) only from land line (+30) 210 6897691 from mobile and land line	http://www.samsung.com/gr/ support
HUNGARY	0680SAMSUNG (0680-726-786) 0680PREMIUM (0680-773-648)	http://www.samsung.com/hu/ support
ITALIA	800-SAMSUNG (800.7267864)	http://www.samsung.com/it/ support
LATVIA	8000-7267	http://www.samsung.com/lv/ support
LITHUANIA	8-800-77777	http://www.samsung.com/lt/ support
LUXEMBURG	261 03 710	http://www.samsung.com/support
MONTENEGRO	020 405 888	http://www.samsung.com/support
NETHERLANDS	0900-SAMSUNG (0900-7267864) (€ 0,10/Min)	http://www.samsung.com/nl/ support
NORWAY	815 56480	http://www.samsung.com/no/ support
POLAND	0 801-172-678* lub +48 22 607-93-33 * * (koszt połączenia według taryfy operatora)	http://www.samsung.com/pl/ support
PORTUGAL	808 20 7267	http://www.samsung.com/pt/ support
ROMANIA	08008 726 78 64 (08008 SAMSUNG) Apel GRATUIT	http://www.samsung.com/ro/ support
SERBIA	011 321 6899	http://www.samsung.com/rs/ support
SLOVAKIA	0800 - SAMSUNG (0800-726 786)	http://www.samsung.com/sk/ support
SLOVENIA	080 697 267 090 726 786	http://www.samsung.com/si

Appendix

EUROPE		
SPAIN	0034902172678	http://www.samsung.com/es/support
SWEDEN	0771 726 7864 (SAMSUNG)	http://www.samsung.com/se/support
SWITZERLAND	0800 726 78 64 (0800-SAMSUNG)	http://www.samsung.com/ch/support (German) http://www.samsung.com/ch_fr/support (French)
UK	0330 SAMSUNG (7267864)	http://www.samsung.com/uk/support

CIS		
ARMENIA	0-800-05-555	http://www.samsung.com/support
AZERBAIJAN	0-88-555-55-55	http://www.samsung.com/support
BELARUS	810-800-500-55-500	http://www.samsung.com/support
GEORGIA	0-800-555-555	http://www.samsung.com/support
KAZAKHSTAN	8-10-800-500-55-500 (GSM: 7799, VIP care 7700)	http://www.samsung.com/support
KYRGYZSTAN	8-10-800-500-55-500	http://www.samsung.com/kz_ru/support
MOLDOVA	0-800-614-40	http://www.samsung.com/support
MONGOLIA	7-495-363-17-00	http://www.samsung.com/support
RUSSIA	8-800-555-55-55	http://www.samsung.com/ru/support
TADJIKISTAN	8-10-800-500-55-500	http://www.samsung.com/support
UKRAINE	0-800-502-000	http://www.samsung.com/ua/support (Ukrainian) http://www.samsung.com/ua_ru/support (Russian)
UZBEKISTAN	8-10-800-500-55-500	http://www.samsung.com/support

Appendix

CHINA		
CHINA	400-810-5858	http://www.samsung.com/cn/support
HONG KONG	(852) 3698 4698	http://www.samsung.com/hk/support (Chinese) http://www.samsung.com/hk_en/support (English)
MACAU	0800 333	http://www.samsung.com/support

S.E.A		
AUSTRALIA	1300 362 603	http://www.samsung.com/au/support
INDONESIA	021-56997777 08001128888	http://www.samsung.com/id/support
JAPAN	0120-363-905	http://www.samsung.com/jp/support
MALAYSIA	1800-88-9999 603-77137477 (Overseas contact)	http://www.samsung.com/my/support
MYANMAR	01-2399888	http://www.samsung.com/support
NEW ZEALAND	0800 726 786	http://www.samsung.com/nz/support
PHILIPPINES	1-800-10-7267864 [PLDT] 1-800-8-7267864 [Globe landline and Mobile] 02-4222111 [Other landline]	http://www.samsung.com/ph/support
SINGAPORE	1800-SAMSUNG (726-7864)	http://www.samsung.com/sg/support
TAIWAN	0800-329999	http://www.samsung.com/tw/support
THAILAND	0-2689-3232, 1800-29-3232	http://www.samsung.com/th/support
VIETNAM	1800 588 889	http://www.samsung.com/vn/support

S.W.A		
BANGLADESH	09612300300	http://www.samsung.com/in/support

Appendix

S.W.A		
INDIA	1800 3000 8282 - Toll Free 1800 266 8282 - Toll Free	http://www.samsung.com/in/support
SRI LANKA	0094117540540 0094115900000	http://www.samsung.com/support

MENA		
ALGERIA	021 36 11 00	http://www.samsung.com/n_africa/support
BAHRAIN	8000-GSAM (8000-4726)	http://www.samsung.com/ae/support (English) http://www.samsung.com/ae_ar/support (Arabic)
EGYPT	08000-726786 16580	http://www.samsung.com/eg/support
IRAN	021-8255	http://www.samsung.com/iran/support
JORDAN	0800-22273 06 5777444	http://www.samsung.com/Levant/support (English)
KUWAIT	183-CALL (183-2255)	http://www.samsung.com/ae/support (English) http://www.samsung.com/ae_ar/support (Arabic)
MOROCCO	080 100 22 55	http://www.samsung.com/n_africa/support
OMAN	800-SAMSUNG (800 - 726 7864)	http://www.samsung.com/ae/support (English) http://www.samsung.com/ae_ar/support (Arabic)
PAKISTAN	0800-Samsung (72678)	http://www.samsung.com/pk/support
QATAR	800-CALL (800-2255)	http://www.samsung.com/ae/support (English) http://www.samsung.com/ae_ar/support (Arabic)
SAUDI ARABIA	920021230	http://www.samsung.com/sa/support http://www.samsung.com/sa_en/support (English)

Appendix

MENA		
SYRIA	18252273	http://www.samsung.com/Levant/support (English)
TUNISIA	80-1000-12	http://www.samsung.com/n_africa/support
TURKEY	444 77 11	http://www.samsung.com/tr/support
U.A.E	800-SAMSUNG (800 - 726 7864)	http://www.samsung.com/ae/support (English) http://www.samsung.com/ae_ar/support (Arabic)

AFRICA		
BOTSWANA	8007260000	http://www.samsung.com/support
BURUNDI	200	http://www.samsung.com/support
CAMEROON	7095-0077	http://www.samsung.com/africa_fr/support
COTE D'IVOIRE	8000 0077	http://www.samsung.com/africa_fr/support
DRC	499999	http://www.samsung.com/support
GHANA	0800-10077 0302-200077	http://www.samsung.com/africa_en/support
KENYA	0800 545 545	http://www.samsung.com/support
MOZAMBIQUE	847267864 / 827267864	http://www.samsung.com/support
NAMIBIA	08 197 267 864	http://www.samsung.com/support
NIGERIA	0800-726-7864	http://www.samsung.com/africa_en/support
RWANDA	9999	http://www.samsung.com/support
SENEGAL	800-00-0077	http://www.samsung.com/africa_fr/support
SOUTH AFRICA	0860 SAMSUNG (726 7864)	http://www.samsung.com/support
SUDAN	1969	http://www.samsung.com/support
TANZANIA	0800 755 755	http://www.samsung.com/support
UGANDA	0800 300 300	http://www.samsung.com/support
ZAMBIA	0211 350370	http://www.samsung.com/support

Responsibility for the Pay Service (Cost to Customers)



When the service is requested, in spite of in warranty, we may charge you for a visit from a service technician in the following cases.

Not a product defect

Cleaning of the product, Adjustment, Explanation, Re-installation and etc.

- If a service technician gives instructions on how to use product or simply adjusts options without disassembling product.
- If a defect is caused by external environmental factors. (Internet, Antenna, Wired Signal, etc.)
- If a product is reinstalled or devices are connected additionally after installing the purchased product for the first time.
- If a product is reinstalled to move to a different spot or to move to a different house.
- If customer requests instructions on how to use because of another company's product.
- If customer requests instructions on how to use the network or another company's program.
- If customer requests software installation and setup for the product.
- If a service technician removes/cleans dusts or foreign materials inside of the product.
- If customer requests an installation additionally after purchasing a product through home-shopping or online.

A Product damage caused by customer's fault

Product damage caused by customer's mishandling or wrong repair

If a product damage is caused by;

- external impact or drop.
- use of supplies or separately sold product unspecified by Samsung.
- repair from a person besides an engineer of outsourcing service company or partner of Samsung Electronics Co., Ltd.
- remodeling or repairing the product by customer.
- using it with incorrect voltage or non-authorised electrical connections.
- not following the "cautions" in User Manual.

Others

- If product fails by natural disaster. (lightning, fire, earthquake, flood damage, etc)
- If consumable components are all used up. (Battery, Toner, Fluorescent lights, Head, Vibrator, Lamp, Filter, Ribbon, etc.)



If customer requests a service in case the product has no defect, service fee may be charged. So please read User Manual first.

Correct Disposal

Correct Disposal of This Product (Waste Electrical & Electronic Equipment)



(Applicable in countries with separate collection systems)

This marking on the product, accessories or literature indicates that the product and its electronic accessories (e.g. charger, headset, USB cable) should not be disposed of with other household waste at the end of their working life. To prevent possible harm to the environment or human health from uncontrolled waste disposal, please separate these items from other types of waste and recycle them responsibly to promote the sustainable reuse of material resources.

Household users should contact either the retailer where they purchased this product, or their local government office, for details of where and how they can take these items for environmentally safe recycling.

Business users should contact their supplier and check the terms and conditions of the purchase contract. This product and its electronic accessories should not be mixed with other commercial wastes for disposal.

Terminology

OSD (On Screen Display)

On screen display (OSD) allows you to customize on-screen settings to optimize the picture quality as required. You can change the screen brightness, tint, size and many other settings using menus displayed on the screen.

Gamma

The Gamma menu adjusts the grey scale that represents middle tones on the screen. Adjusting the brightness brightens the whole screen, but adjusting Gamma only brightens the medium brightness.

Grey scale

Scale refers to levels of color intensity that show variations of color change from darker areas to brighter areas on the screen. Changes to the screen brightness are expressed with black and white variation, and grey scale refers to the medium area between black and white. Changing the grey scale through Gamma adjustment will change the medium brightness on the screen.

Scanning rate

Scanning rate, or refresh rate, refers to the frequency of screen refreshes. Screen data is transmitted as it refreshes to display an image, although the refreshing is invisible to the naked eye. The number of screen refreshes is called scanning rate and is measured in Hz. A scanning rate of 60Hz means that the screen refreshes 60 times per second. The screen scanning rate depends on the performance of the graphics cards in your PC and monitor.

Horizontal Frequency

Characters or images displayed on the monitor screen consist of numerous dots (pixels). Pixels are transmitted in horizontal lines, which are then arranged vertically to create an image. The horizontal frequency is measured in kHz and represents how many times horizontal lines per second are transmitted and displayed on the monitor screen. A horizontal frequency of 85 means that the horizontal lines that make up an image are transmitted 85000 times per second. The horizontal frequency is indicated in 85kHz.

Vertical Frequency

One image is made of numerous horizontal lines. The vertical frequency is measured in Hz and represents how many images can be created per second by those horizontal lines. A vertical frequency of 60 means that an image is transmitted 60 times per second. The vertical frequency is also called "refresh rate" and affects screen flicker.

Resolution

Resolution is the number of horizontal pixels and vertical pixels that form a screen. It represents the level of display detail.

A higher resolution displays a greater amount of information on the screen and is suitable for performing multiple tasks at the same time.

E.g. A resolution of 1920 x 1080 consists of 1920 horizontal pixels (horizontal resolution) and 1080 vertical lines (vertical resolution).

E.g. A resolution of 1920 x 1200 consists of 1920 horizontal pixels (horizontal resolution) and 1,200 vertical lines (vertical resolution).

Plug & Play

The Plug & Play feature allows the automatic exchange of information between a monitor and PC to produce an optimum display environment.

The monitor uses VESA DDC (international standard) to execute Plug & Play.

Index

B

Before Connecting 30
Blue 53
Brightness 37

C

Checking the Contents 19
Cleaning 8
Coarse 49
Color Tone 54
Connecting and Using a PC 30
Contact SAMSUNG WORLD WIDE 85
Contrast 38
Copyright 7
Correct Disposal 94
Correct posture to use the product 18

D

Display Time 58

E

Easy Setting Box 74
Eco Saving 61

F

Fine 50

G

Game Mode 40
Gamma 55
General 81
Green 52

H

HDMI Black Level 46

I

Image Size 44
INFORMATION 68
Installation 25

K

Key Repeat Time 65

L

Language 56

O

Off Timer 62

P

Parts 20
PC/AV Mode 64
Power LED On 67
PowerSaver 82

Q

Q & A 79

R

Red 51
Requirements Before Contacting Samsung
Customer Service Center 76
Reset All 60
Response Time 47
Responsibility for the Pay Service (Cost to
Customers) 93

Index

S

Safety Precautions 10
SAMSUNG MAGIC Bright 41
SAMSUNG MAGIC Upscale 43
Sharpness 39
Source Detection 66
Standard Signal Mode Table 83

T

Terminology 95
Transparency 59