

# User manual

**S19C450BW  
S19C450MW  
S19C450BR  
S19C450MR  
S20C450B  
S22C450B  
S22C450M  
S22C450BW  
S22C450MW  
S23C450B  
S23C450M  
S24C450BL  
S24C450B  
S24C450M  
S24C450BW  
S24C450MW  
S27C450B**

The color and the appearance may differ depending on the product, and the specifications are subject to change without prior notice to improve the performance.

# Table Of Contents

---

<b>BEFORE USING THE PRODUCT</b>	<b>7</b>	<b>Copyright</b>
	7	Icons used in this manual
	7	Symbols for safety precautions
	<b>8</b>	<b>Cleaning</b>
	8	Cleaning
	9	Securing the Installation Space
	9	Precautions for storage
	<b>10</b>	<b>Safety Precautions</b>
	10	Electricity and Safety
	11	Installation and Safety
<b>PREPARATIONS</b>	13	Operation and Safety
	<b>16</b>	<b>Correct posture to use the product</b>
	<b>17</b>	<b>Checking the Contents</b>
	17	Removing the Packaging
	18	Checking the Components
	<b>19</b>	<b>Parts</b>
	19	Frontal Buttons
	21	Reverse Side
	<b>22</b>	<b>Installation</b>
	22	Attaching the Stand
<b>CONNECTING AND USING A SOURCE DEVICE</b>	23	Adjusting the Product Tilt and Height
	23	Rotating the Monitor
	24	Installing a Wall-mount Kit or Desktop Stand
	25	Anti-theft Lock
	<b>26</b>	<b>Before Connecting</b>
	26	Pre-connection Checkpoints
	<b>26</b>	<b>Connecting the Power</b>

# Table Of Contents

---

	27	<b>Connecting and Using a PC</b>
	27	Connecting to a PC
	30	Driver Installation
	31	Setting Optimum Resolution
	32	Changing the Resolution Using a PC
<b>SCREEN SETUP</b>	36	<b>Brightness</b>
	36	Configuring <b>Brightness</b>
	37	<b>Contrast</b>
	37	Configuring <b>Contrast</b>
	38	<b>Sharpness</b>
	38	Configuring <b>Sharpness</b>
	39	<b>SAMSUNG MAGIC Bright</b>
	39	Configuring <b>SAMSUNG MAGIC Bright</b>
	40	<b>SAMSUNG MAGIC Angle</b>
	40	Configuring <b>SAMSUNG MAGIC Angle</b>
	41	<b>SAMSUNG MAGIC Upscale</b>
	41	Configuring <b>SAMSUNG MAGIC Upscale</b>
	42	<b>Image Size</b>
	42	Changing the <b>Image Size</b>
	44	<b>H-Position &amp; V-Position</b>
	44	Configuring <b>H-Position &amp; V-Position</b>
	45	<b>Coarse</b>
	45	Adjusting <b>Coarse</b>
	46	<b>Fine</b>
	46	Adjusting <b>Fine</b>
<b>CONFIGURING TINT</b>	47	<b>Red</b>
	47	Configuring <b>Red</b>
	48	<b>Green</b>
	48	Configuring <b>Green</b>

# Table Of Contents

---

	<b>49</b>	<b>Blue</b>
	49	Configuring <b>Blue</b>
	<b>50</b>	<b>Color Tone</b>
	50	Configuring the <b>Color Tone</b> Settings
	<b>51</b>	<b>Gamma</b>
	51	Configuring <b>Gamma</b>
<b>RESIZING OR RELOCATING THE SCREEN</b>	<b>52</b>	<b>Language</b>
	52	Changing the <b>Language</b>
	<b>53</b>	<b>Menu H-Position &amp; Menu V-Position</b>
	53	Configuring <b>Menu H-Position &amp; Menu V-Position</b>
	<b>54</b>	<b>Display Time</b>
	54	Configuring <b>Display Time</b>
	<b>55</b>	<b>Transparency</b>
	55	Changing Transparency
<b>SETUP AND RESET</b>	<b>56</b>	<b>Reset</b>
	56	Initializing Settings ( <b>Reset</b> )
	<b>57</b>	<b>Eco Saving</b>
	57	Configuring Eco Saving
	<b>58</b>	<b>Off Timer</b>
	58	Configuring Off Timer
	<b>59</b>	<b>Turn Off After</b>
	59	Configuring Turn Off After
	<b>60</b>	<b>PC/AV Mode</b>
	60	Configuring <b>PC/AV Mode</b>
	<b>61</b>	<b>Key Repeat Time</b>
	61	Configuring <b>Key Repeat Time</b>
	<b>62</b>	<b>Source Detection</b>
	62	Configuring Source Detection

# Table Of Contents

---

	63	<b>Customized Key</b>
	63	Configuring <b>Customized Key</b>
<b>INFORMATION MENU AND OTHERS</b>	64	<b>INFORMATION</b>
	64	Displaying <b>INFORMATION</b>
	65	<b>Configuring Brightness and Contrast in the Initial Screen</b>
	66	<b>Configuring Volume in the Initial Screen</b>
<b>INSTALLING THE SOFTWARE</b>	67	<b>Magic Tune</b>
	67	What is MagicTune?
	67	Installing the Software
	68	Removing the Software
	69	<b>MultiScreen</b>
	69	Installing the Software
	70	Removing the Software
	71	<b>MagicRotation</b>
	71	Installing the Software
	73	Removing the Software
<b>TROUBLESHOOTING GUIDE</b>	74	<b>Requirements Before Contacting Samsung Customer Service Center</b>
	74	Testing the Product
	74	Checking the Resolution and Frequency
	74	Check the following.
	77	<b>Q &amp; A</b>
<b>SPECIFICATIONS</b>	79	<b>General</b>
	91	<b>PowerSaver</b>
	93	<b>Standard Signal Mode Table</b>
<b>APPENDIX</b>	111	<b>Contact SAMSUNG WORLD WIDE</b>

# Table Of Contents

---

117	<b>Responsibility for the Pay Service (Cost to Customers)</b>
117	Not a product defect
117	A Product damage caused by customer's fault
117	Others
118	<b>Correct Disposal</b>
118	Correct Disposal of This Product (Waste Electrical & Electronic Equipment)
119	<b>Terminology</b>

## INDEX

# Before Using the Product

## Copyright

The contents of this manual are subject to change without notice to improve quality.

© 2012 Samsung Electronics

Samsung Electronics owns the copyright for this manual.

Use or reproduction of this manual in parts or entirety without the authorization of Samsung Electronics is prohibited.

Microsoft, Windows and Windows NT are registered trademarks of Microsoft Corporation.

VESA, DPM and DDC are registered trademarks of the Video Electronics Standards Association.





- An administration fee may be charged if either
  - ▣ (a) an engineer is called out at your request and there is no defect in the product (i.e. where you have failed to read this user manual).
  - ▣ (b) you bring the unit to a repair center and there is no defect in the product (i.e. where you have failed to read this user manual).
- The amount of such administration charge will be advised to you before any work or home visit is carried out.

## Icons used in this manual



The following images are for reference only. Real-life situations may differ from what is shown in the images.

## Symbols for safety precautions

 Warning	A serious or fatal injury may result if instructions are not followed.
 Caution	Personal injury or damage to properties may result if instructions are not followed.
	Activities marked by this symbol are prohibited.
	Instructions marked by this symbol must be followed.

# Before Using the Product

## Cleaning

### Cleaning

Exercise care when cleaning as the panel and exterior of advanced LCDs are easily scratched.

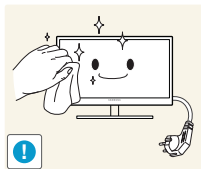
Take the following steps when cleaning.



1. Power off the monitor and computer.
2. Disconnect the power cord from the monitor.



Hold the power cable by the plug and do not touch the cable with wet hands. Otherwise, an electric shock may result.



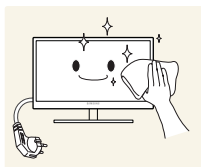
3. Wipe the monitor screen using a clean, soft and dry cloth.



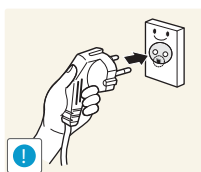
- Do not apply a cleaning agent that contains alcohol, solvent, or surfactant to the monitor.



- Do not spray water or detergent directly on the product.



4. Wet a soft and dry cloth in water and wring thoroughly to clean the exterior of the monitor.



5. Connect the power cord to the product after cleaning the product.
6. Power on the monitor and computer.



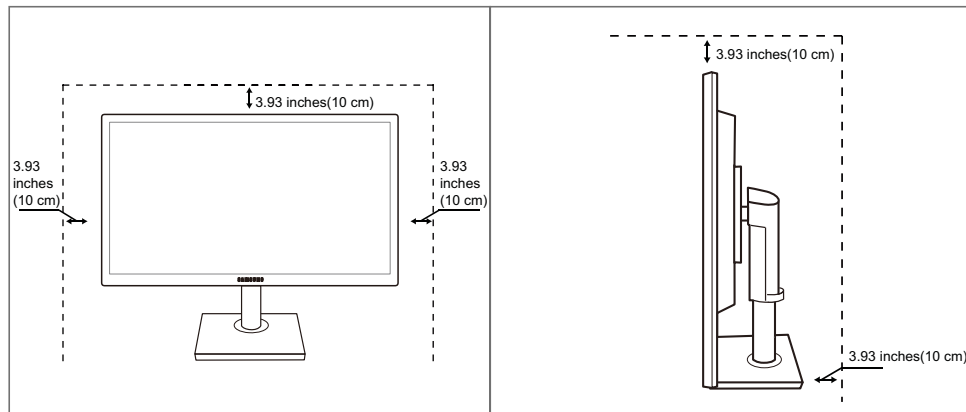
# Before Using the Product

## Securing the Installation Space

- Ensure some space around the product for ventilation. An internal temperature rise may cause fire and damage the product. Be sure to allow the amount of space as shown below or greater when installing the product.



The exterior may differ depending on the product.



## Precautions for storage



Be sure to contact Samsung Customer Service Center (page 111) if the inside of the monitor needs cleaning. (Service fee will be charged.)

# Before Using the Product

## Safety Precautions

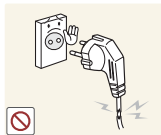
### Electricity and Safety



The following images are for reference only. Real-life situations may differ from what is shown in the images.



#### Warning



Do not use a damaged power cord or plug, or a loose power socket.

- An electric shock or fire may result.



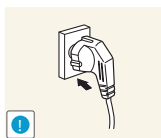
Do not plug many products into the same power socket.

- Otherwise, the socket may overheat and cause a fire.



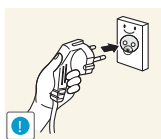
Do not touch the power plug with wet hands.

- Otherwise, an electric shock may result.



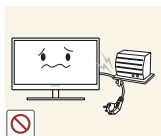
Insert the power plug all the way in so it is not loose.

- An unstable connection may cause a fire.



Ensure you connect the power plug to a grounded power socket. (type 1 insulated devices only).

- An electric shock or injury may result.



Do not bend or pull the power cord with force. Do not weigh the power cord down with a heavy object.

- A damaged power cord may cause an electric shock or fire.



Do not place the power cord or product near heat sources.

- An electric shock or fire may result.



Remove foreign substances such as dust around the plug pins and power socket with a dry cloth.

- Otherwise, a fire may result.

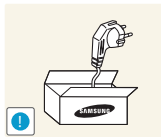
# Before Using the Product

## Caution



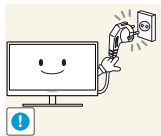
Do not unplug the power cord when the product is in use.

- The product may become damaged by an electric shock.



Do not use the power cord for products other than authorized products supplied by Samsung.

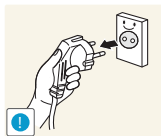
- An electric shock or fire may result.



Keep the power socket where the power cord is connected unobstructed.

- If any problem occurs in the product, unplug the power cable to completely cut the power to the product.

Power to the product cannot be completely cut off with the power button.



Hold the plug when disconnecting the power cord from the power socket.

- An electric shock or fire may result.

## Installation and Safety

## Warning



DO NOT PLACE CANDLES, INSECT REPELLANTS OR CIGARETTES ON TOP OF THE PRODUCT. DO NOT INSTALL THE PRODUCT NEAR HEAT SOURCES.

- Otherwise, a fire may result.



Avoid installing the product in a narrow space with bad ventilation, such as a bookshelf or wall closet.

- Otherwise, a fire may result due to an increased internal temperature.



Keep the plastic packaging bag for the product in a place that cannot be reached by children.

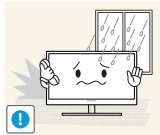
- Children may suffocate.

# Before Using the Product



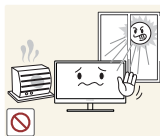
Do not install the product on an unstable or vibrating surface (insecure shelf, sloped surface, etc.).

- The product may fall and break or cause a personal injury.
- Using the product in an area with excess vibration may damage the product or cause a fire.



Do not install the product in a vehicle or a place exposed to dust, moisture (water drips, etc.), oil, or smoke.

- An electric shock or fire may result.



Do not expose the product to direct sunlight, heat, or a hot object such as a stove.

- Otherwise, the product lifespan may be reduced, or a fire may result.



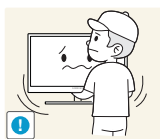
Do not install the product within the reach of young children.

- The product may fall and injure children.



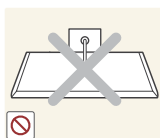
Edible oil, such as soybean oil, can damage or deform the product. Do not install the product in a kitchen or near a kitchen counter.

## Caution



Take care not to drop the product when moving it.

- Otherwise, product failure or personal injury may result.



Do not set down the product on its front.

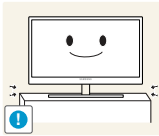
- The screen may become damaged.



When installing the product on a cabinet or shelf, make sure that the bottom edge of the front of the product is not protruding.

- The product may fall and break or cause a personal injury.
- Install the product only on cabinets or shelves of the right size.

# Before Using the Product



Put down the product carefully.

- The product may fall and break or cause a personal injury.



Installing the product in an unusual place (a place exposed to a lot of fine particles, chemical substances or extreme temperatures, or an airport or train station where the product should operate continuously for an extended period of time) may seriously affect its performance.

- Be sure to consult Samsung Customer Service Center (page 111) before installation if you want to install the product at such a place.

## Operation and Safety

### Warning



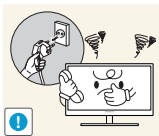
High voltage runs through the product. Do not attempt to disassemble, repair, or modify the product on your own.

- An electric shock or fire may result.
- Contact Samsung Customer Service Center (page 111) for repair.



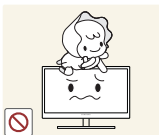
Before moving the product, turn off the power switch and disconnect the power cable and all other connected cables.

- Otherwise, the power cord may be damaged and a fire or electric shock may result.



If the product generates a strange noise, a burning smell, or smoke, remove the power cord immediately and contact Samsung Customer Service Center (page 111).

- An electric shock or fire may result.



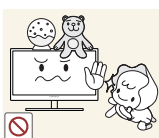
Do not let children hang from the product or climb on top of it.

- The product may fall, and your child may become injured or seriously harmed.



If the product falls or the exterior is damaged, power off the product, remove the power cord, and contact Samsung Customer Service Center (page 111).

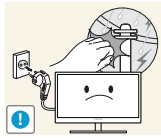
- Otherwise, an electric shock or fire may result.



Do not put a heavy object, toy, or sweets on top of the product.

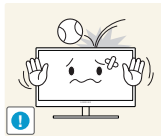
- The product or heavy objects may fall as children try to reach for the toy or sweets resulting in a serious injury.

# Before Using the Product



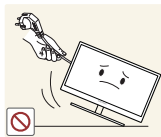
During a lightning or thunderstorm, power off the product and remove the power cable.

- An electric shock or fire may result.



Do not drop objects on the product or apply impact.

- An electric shock or fire may result.



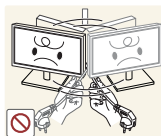
Do not move the product by pulling the power cord or any cable.

- Otherwise, the cable may be damaged and product failure, an electric shock or fire may result.



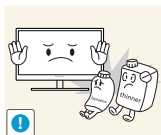
If a gas leakage is found, do not touch the product or power plug. Also, ventilate the area immediately.

- Sparks can cause an explosion or fire.



Do not lift or move the product by pulling the power cord or any cable.

- Otherwise, the cable may be damaged and product failure, an electric shock or fire may result.



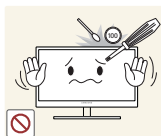
Do not use or keep combustible spray or an inflammable substance near the product.

- An explosion or fire may result.



Ensure the vents are not blocked by tablecloths or curtains.

- Otherwise, a fire may result from an increased internal temperature.



Do not insert a metallic object (a chopstick, coin, hair pin, etc.) or inflammable object (paper, match, etc.) into the vent or ports of the product.

- If water or any foreign substance enters the product, be sure to power off the product, remove the power cord, and contact Samsung Customer Service Center (page 111).
- Product failure, an electric shock or fire may result.

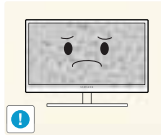


Do not place objects containing liquid (vases, pots, bottles, etc) or metallic objects on top of the product.

- If water or any foreign substance enters the product, be sure to power off the product, remove the power cord, and contact Samsung Customer Service Center (page 111).
- Product failure, an electric shock or fire may result.

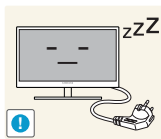
# Before Using the Product

## Caution



Leaving the screen fixed on a stationary image for an extended period of time may cause afterimage burn-in or defective pixels.

- If you are not going to use the product for an extended period of time, activate power-saving mode or a moving-picture screen saver.



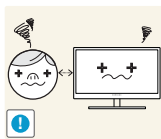
Disconnect the power cord from the power socket if you do not plan on using the product for an extended period of time (vacation, etc.).

- Otherwise, a fire may result from accumulated dust, overheating, an electric shock, or electric leakage.



Use the product at the recommended resolution and frequency.

- Otherwise, Your eyesight may deteriorate.



Looking at the screen too close for an extended period of time can deteriorate your eyesight.



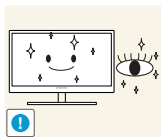
Do not hold the monitor upside-down or move it by holding the stand.

- The product may fall and break or cause a personal injury.



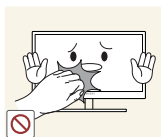
Do not use humidifiers or stoves around the product.

- An electric shock or fire may result.

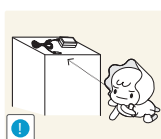


Rest your eyes for more than 5 minutes for every 1 hour of product use.

- Eye fatigue will be relieved.



Do not touch the screen when the product has been turned on for an extended period of time as it will become hot.



Store the small accessories used with the product out of reach of children.

# Before Using the Product



Exercise caution when adjusting the product angle or stand height.

- Otherwise, children's fingers or hands may become stuck and injured.
- Tilting the product excessively may cause it to fall and result in personal injury.



Do not place heavy objects on the product.

- Product failure or personal injury may result.

## Correct posture to use the product



Use the product in the correct posture as follows.

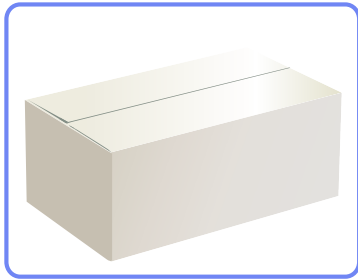
- Straighten your back.
- Allow a distance of 45 to 50cm between your eye and the screen, and look slightly downward at the screen.  
Keep your eyes directly in front of the screen.
- Adjust the angle so light does not reflect on the screen.
- Keep your forearms perpendicular to your upper arms and level with the back of your hands.
- Keep your elbows at about a right angle.
- Adjust the height of the product so you can keep your knees bent at 90 degrees or more, your heels attached to the floor, and your arms lower than your heart.



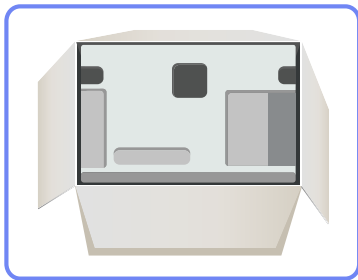
## 1.1 Checking the Contents

### 1.1.1 Removing the Packaging

- 1 Open the packaging box. Be careful not to damage the product when you open the packaging with a sharp instrument.



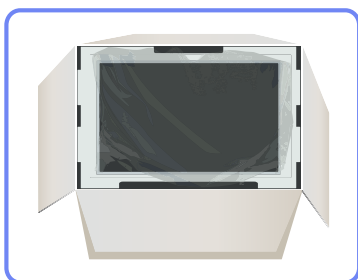
- 2 Remove the styrofoam from the product.



- 3 Check the components and remove the styrofoam and plastic bag.



This image is for reference only.



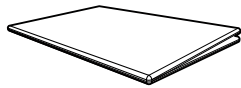
- 4 Store the box in a dry area so that it can be used when moving the product in the future.

## 1.1.2 Checking the Components



- Contact the dealer from whom you purchased the product if any item is missing.
- The appearance of the components and items sold separately may differ from the image shown.

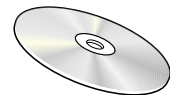
### Components



Quick setup guide



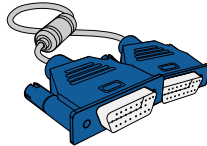
Warranty card  
(Not available in some locations)



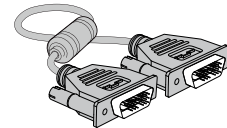
User manual



Power cable



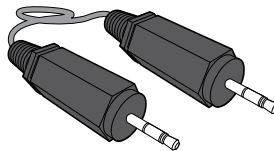
D-SUB cable (optional)



DVI cable (optional)



Stand



Stereo Cable (optional)



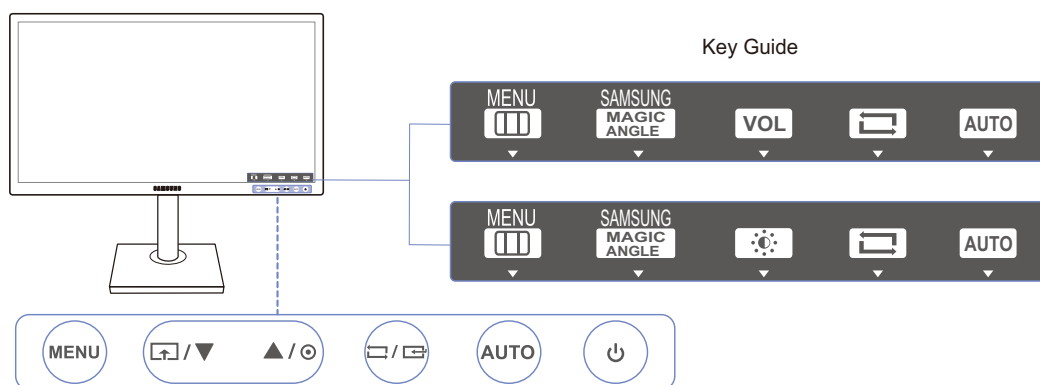
Components may vary depending on the country.

## 1.2 Parts






### 1.2.1 Frontal Buttons



The color and shape of parts may differ from what is shown. Specifications are subject to change without notice to improve quality.



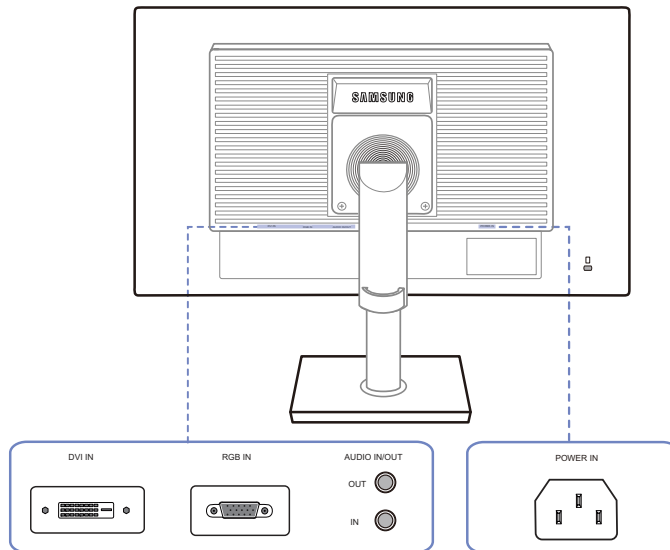
Icons	Description
MENU	<ul style="list-style-type: none"> <li>Open or close the onscreen display (OSD) menu, or return to the parent menu.</li> <li>OSD control lock: Maintain the current settings, or lock the OSD control to prevent unintended changes to settings. Enable: To lock the OSD control, press the [MENU] button for 10 seconds. Disable: To unlock the locked OSD control, press the [MENU] button for more than 10 seconds.</li> </ul> <p> If the OSD control is locked,</p> <ul style="list-style-type: none"> <li><b>Brightness</b> and <b>Contrast</b> can be adjusted, and <b>INFORMATION</b> can be viewed.</li> <li>The <b>Customized Key</b> function can be used by pressing the [] button. (The <b>Customized Key</b> is available even when the OSD control is locked)</li> </ul>
	<p>Configure <b>Customized Key</b> and press []. The following options will be enabled.</p> <p><b>SAMSUNG MAGIC Angle</b> - <b>SAMSUNG MAGIC Bright</b> - <b>Eco Saving</b> - <b>Image Size</b></p> <p> To configure <b>Customized Key</b>, go to <b>SETUP&amp;RESET</b> → <b>Customized Key</b> and select the mode you want.</p>
▲ / ▼	Move to the upper or lower menu or adjust the value for an option on the OSD menu.



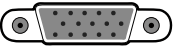




Icons	Description
	<p>Use this button to control the brightness and contrast of the screen.</p> <p> <b>Volume</b> can be adjusted if a cable is connected to the [ IN] port.</p>
	<p>Confirm a menu selection.</p> <p>Pressing the [ ] button when the OSD menu is not displayed will change the input source (<b>Analog/DVI</b>). If you power on the product or change the input source by pressing the [ ] button, a message that shows the changed input source will appear at the top left corner of the screen.</p>
AUTO	<p>Press the [AUTO] button to automatically adjust the screen settings.</p> <p> <ul style="list-style-type: none"> <li>Changing the resolution in Display Properties will activate the <b>Auto Adjustment</b> function.</li> <li>This function is only available in <b>Analog</b> mode.</li> </ul> </p>
	Turn the screen on or off.
Key Guide	<p>When a control button on the product is pressed, the Key Guide will be displayed before the onscreen menu opens. (The guide shows the function of the button pressed.)</p> <p>To access the onscreen menu when the guide is displayed, press the corresponding button again.</p> <p>The Key Guide may vary depending on the function or product model. Refer to the actual product.</p>

### 1.2.2 Reverse Side



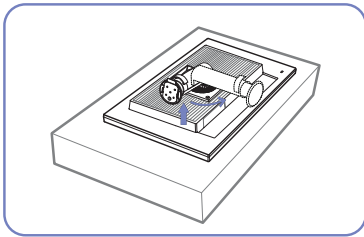
The color and shape of parts may differ from what is shown. Specifications are subject to change without notice to improve quality.



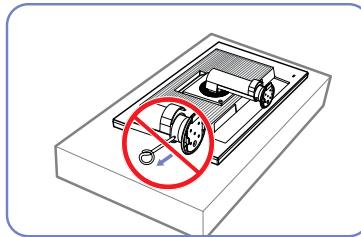
Port	Ports
	Connect the power cord for your monitor to the POWER IN port on the back of the product.
	Connect to a PC using the DVI cable.
	Connect to a PC using the D-SUB cable.
IN 	Connect to an audio-input source using an audio cable.  Applicable to the models that have speakers only.
OUT 	Connect to an audio output device such as headphones.  Applicable to the models that have speakers only.

## 1.3 Installation

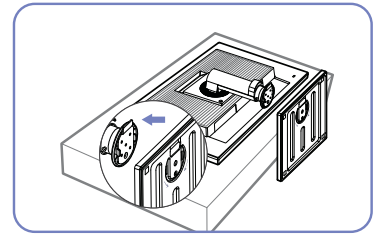
### 1.3.1 Attaching the Stand



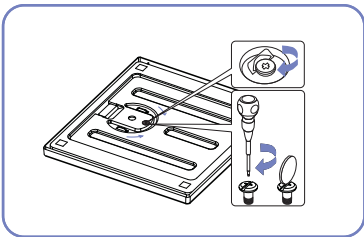
Place a protective cloth or cushion on a flat surface. Next, place the product with the face down on top of the cloth or cushion.



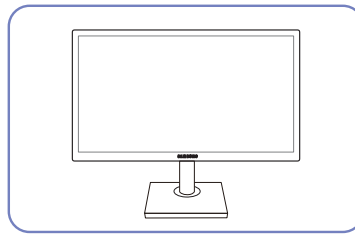
Do not remove the fixing pin until you are finished attaching the stand.



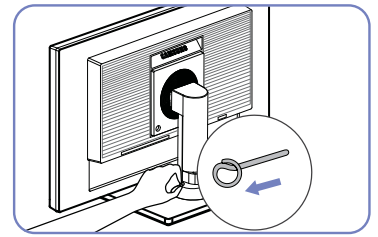
Insert the stand base into the stand in the direction of the arrow.



Fasten the screw tightly (using a screwdriver or coin) into the bottom of the stand base.



After installing the stand, place the product upright.



You can remove the fixing pin and adjust the stand now.



- Caution

Do not hold the product upside down only by the stand.

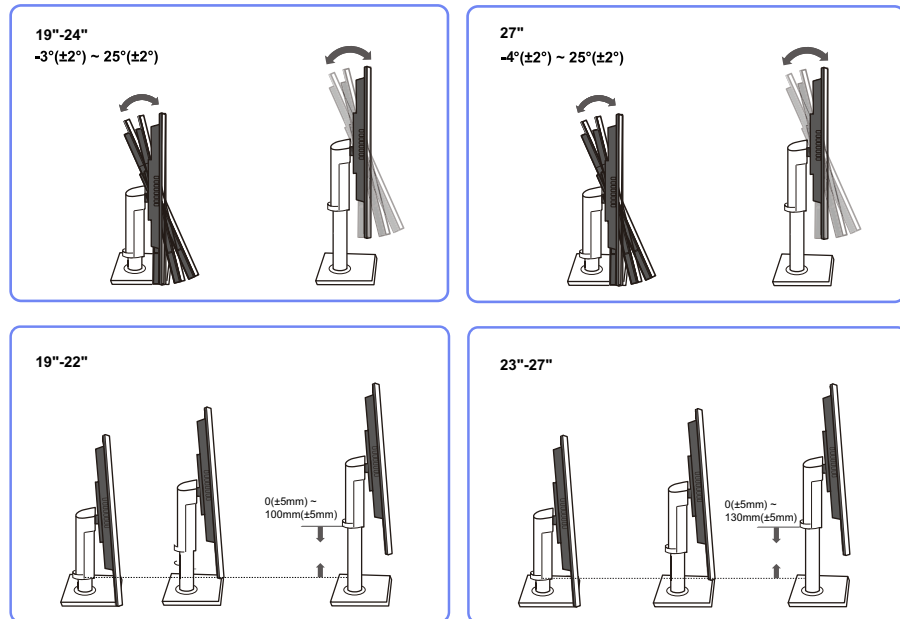


- Disassembly is the reverse order of assembly.
- The color and shape of parts may differ from what is shown. Specifications are subject to change without notice to improve quality.

### 1.3.2 Adjusting the Product Tilt and Height



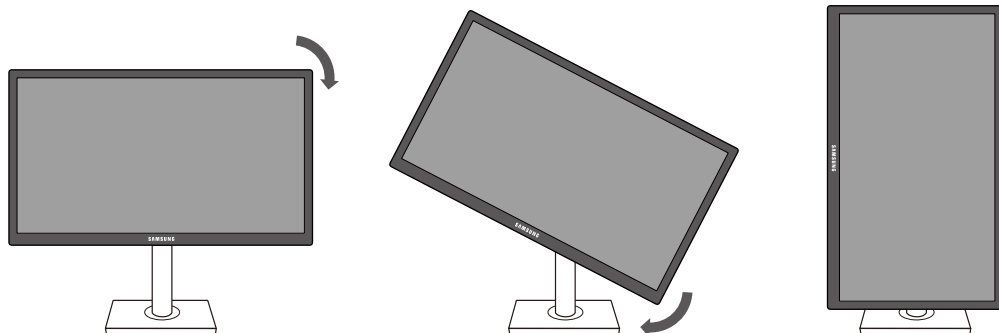
The color and shape of parts may differ from what is shown. Specifications are subject to change without notice to improve quality.



- To adjust the height, remove the fixing pin.
- The monitor tilt and height can be adjusted.
- Hold the top center of the product and adjust the height carefully.

### 1.3.3 Rotating the Monitor

You can rotate your monitor as shown below.



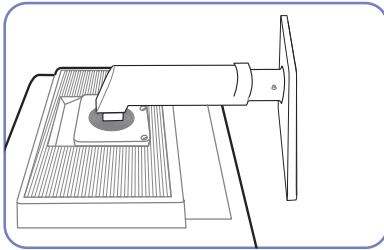
- Be sure to fully extend the stand before rotating the monitor.
- If you rotate the monitor without fully extending the stand, the corner of the monitor may hit the floor and get damaged.
- Do not rotate the monitor counterclockwise. The monitor may get damaged.

## 1.3.4 Installing a Wall-mount Kit or Desktop Stand

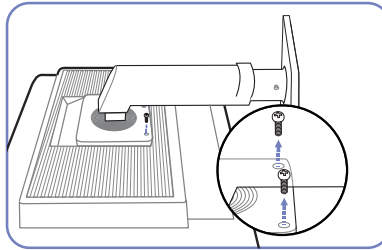
Before Installation



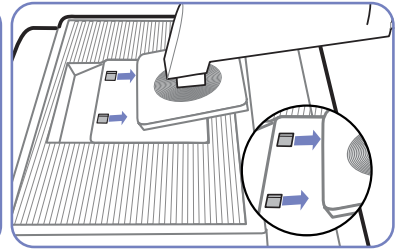
Power the product off and remove the power cable from the power socket.



Place a protective cloth or cushion on a flat surface. Next, place the product with the face down on top of the cloth or cushion.

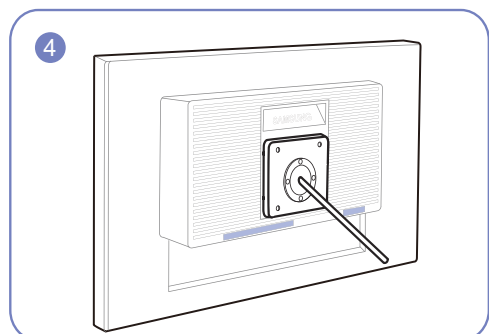
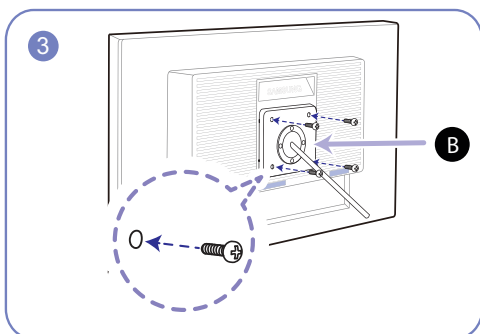
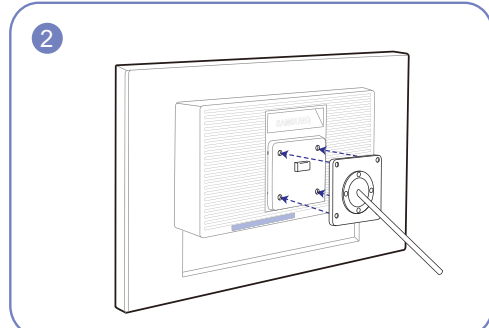
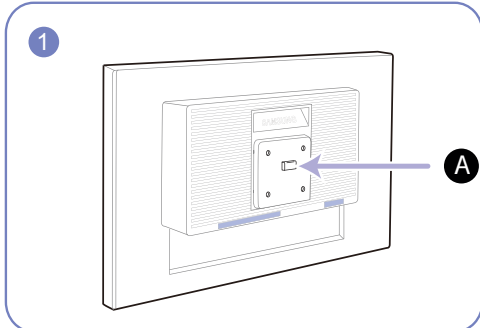


Unfasten the screw from the back of the product.



Lift and detach the stand.

Installing a Wall-mount Kit or Desktop Stand



**A** Attach the wall-mount kit or desktop stand here

**B** Bracket (sold separately)

Align the grooves and tightly fasten the screws on the bracket on the product with the corresponding parts on the wall-mount kit or desktop stand you want to attach.



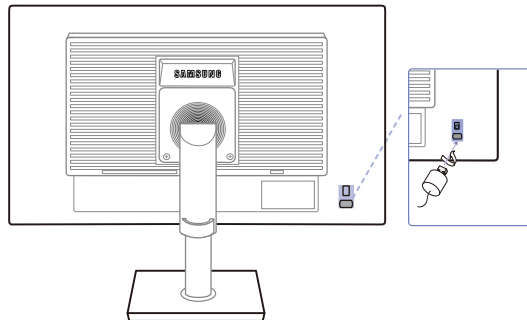


## Notes

- Using a screw longer than the standard length can damage the internal components of the product.
- The length of screws required for a wall mount that does not comply with the VESA standards may vary depending on the specifications.
- Do not use screws that do not comply with the VESA standards. Do not attach the wall-mount kit or desktop stand using excessive force. The product may get damaged or fall and cause personal injury. Samsung shall not be held liable for any damage or injury caused by using improper screws or attaching the wall-mount kit or desktop stand using excessive force.
- Samsung shall not be held liable for any product damage or personal injury caused by using a wall-mount kit other than the one specified or from an attempt to install the wall-mount kit on your own.
- To mount the product on a wall, ensure you purchase a wall-mount kit that can be installed 10cm or farther away from the wall.
- Be sure to use a wall-mount kit that complies with the standards.
- To install the monitor using a wall mount, disconnect the stand base from the monitor.

### 1.3.5 Anti-theft Lock

An anti-theft lock allows you to use the product securely even in public places. The locking device shape and locking method depend on the manufacturer. Refer to the user guide provided with your anti-theft locking device for details. The lock device is sold separately.



The color and shape of parts may differ from what is shown. Specifications are subject to change without notice to improve quality.

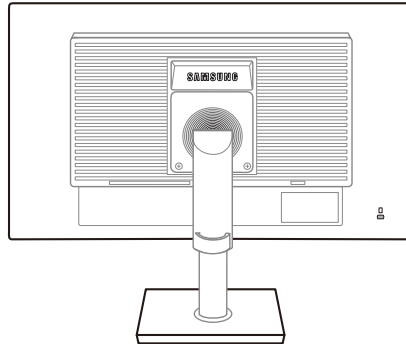
#### To lock an anti-theft locking device:

- 1 Fix the cable of your anti-theft locking device to a heavy object such as a desk.
- 2 Put one end of the cable through the loop on the other end.
- 3 Insert the locking device into the anti-theft lock slot at the back of the product.
- 4 Lock the locking device.



- An anti-theft locking device can be purchased separately.
- Refer to the user guide provided with your anti-theft locking device for details.
- Anti-theft locking devices can be purchased at electronics retailers or online.

## 2.1 Before Connecting

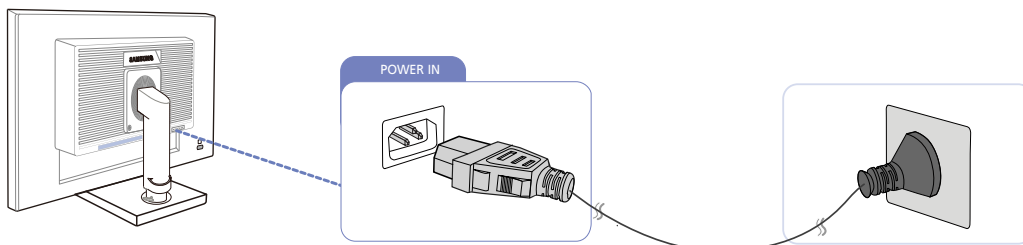


### 2.1.1 Pre-connection Checkpoints

- Before connecting a source device, read the user manual provided with it.  
The number and locations of ports on source devices may differ from device to device.
- Do not connect the power cable until all connections are completed.  
Connecting the power cable during connection may damage the product.
- Check the types of ports at the back of the product you want to connect.

## 2.2 Connecting the Power

- To use the product, connect the power cable to a power outlet and the [POWER IN] port on the product. (The input voltage is switched automatically.)



## 2.3 Connecting and Using a PC

### 2.3.1 Connecting to a PC

- Select a connection method suitable for your PC.

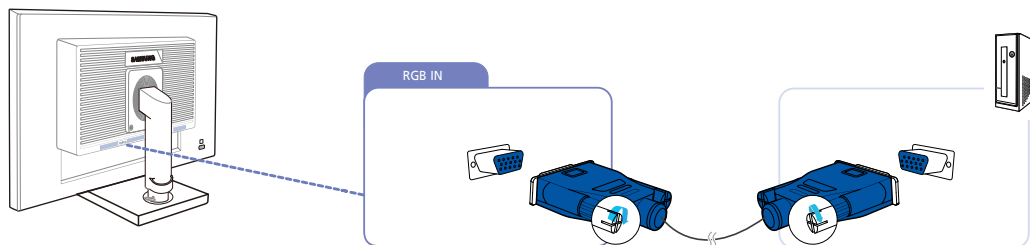


Connecting parts may differ in different products.

#### Connection Using the D-SUB Cable (Analog Type)



Do not connect the power cable before connecting all other cables. Ensure you connect a source device first before connecting the power cable.

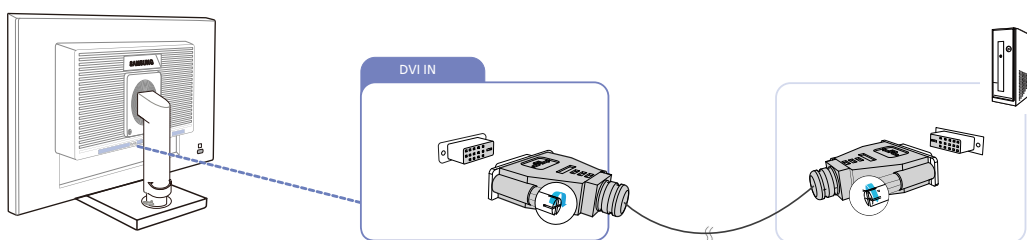


- 1 Connect the D-SUB cable to the [RGB IN] port on the back of the product and the RGB port on the PC.
- 2 Press [⏏/⏏] to change the input source to **Analog**.

#### Connection Using the DVI Cable



Do not connect the power cable before connecting all other cables. Ensure you connect a source device first before connecting the power cable.

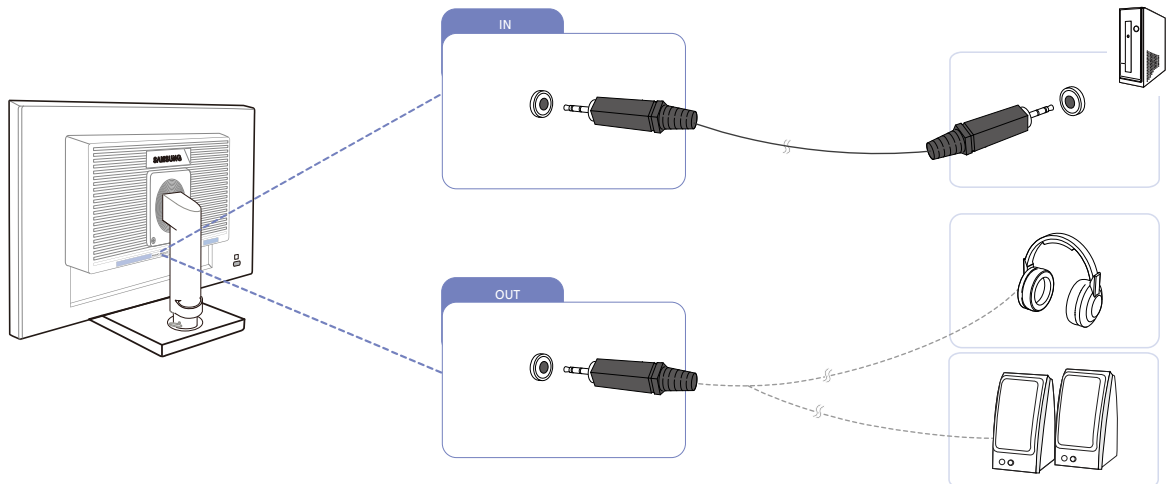


- 1 Connect the DVI cable to the [DVI IN] port on the back of the product and the DVI port on the PC.
- 2 Press [⏏/⏏] to change the input source to **DVI**.

### Connecting to Headphones or Speakers



Do not connect the power cable before connecting all other cables. Ensure you connect a source device first before connecting the power cable.



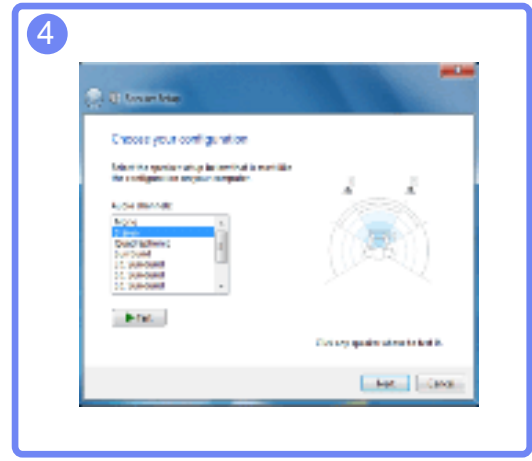
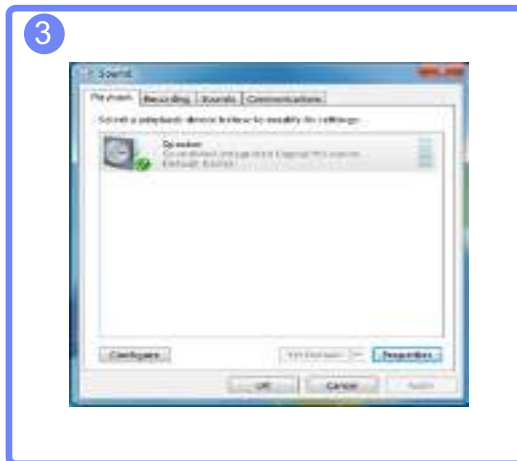
- 1 Connect an audio output device such as headphones or speakers to [ **OUT** ] port on the product.



Applicable to the models that have speakers only.

## Changing the sound settings on Windows

Control Panel → Audio → Speaker → Speaker Setup



### 2.3.2 Driver Installation



- You can set the optimum resolution and frequency for this product by installing the corresponding drivers.
- An installation driver is contained on the CD supplied with the product.
- If the file provided is faulty, visit the Samsung homepage (<http://www.samsung.com>) and download the file.

- 1 Insert the user manual CD provided with the product into the CD-ROM drive.
- 2 Click "Windows Driver".
- 3 Follow the instructions given on the screen to proceed with installation.
- 4 Select your product model from the list of models.

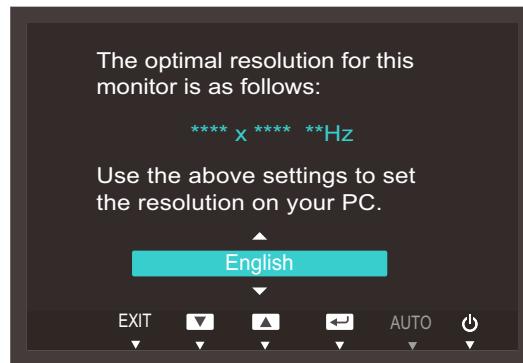


- 5 Go to Display Properties and check that the resolution and refresh rate are appropriate. Refer to your Windows OS manual for further details.

### 2.3.3 Setting Optimum Resolution

An information message about setting optimum resolution will appear if you power on the product for the first time after purchase.

Select a language on the product and change the resolution on your PC to the optimum setting.



1 Press [ $\blacktriangle$ / $\blacktriangledown$ ] to move to the language you want and press [ $\square$ / $\boxplus$ ].

2 To hide the information message, press [**MENU**].



- If the optimum resolution is not selected, the message will appear up to three times for a specified time even when the product is turned off and on again.
- The optimum resolution can also be selected in **Control Panel** on your PC.

### 2.3.4 Changing the Resolution Using a PC

- Adjust the resolution and refresh rate in Control Panel on your PC to obtain optimum picture quality.
- The picture quality of TFT-LCDs may degrade if the optimum resolution is not selected.

Changing the Resolution on Windows XP

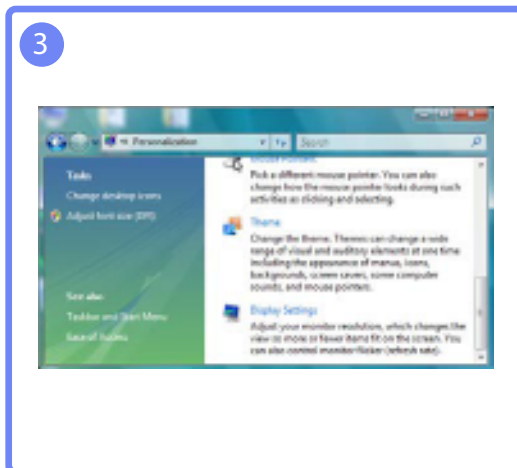
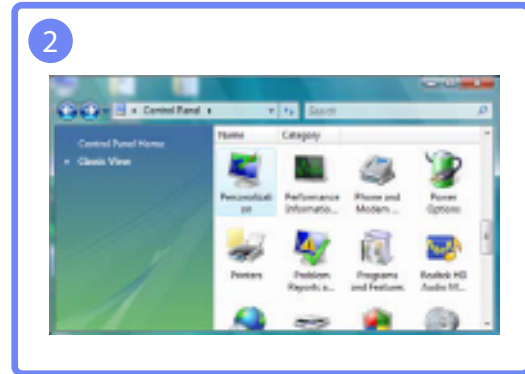
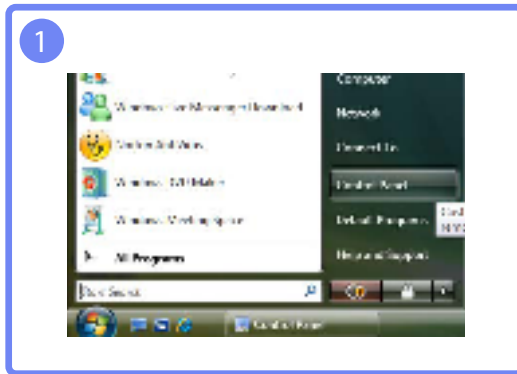
Go to **Control Panel** → **Display** → **Settings** and change the resolution.





Changing the Resolution on Windows Vista

Go to **Control Panel** → **Personalization** → **Display Settings** and change the resolution.



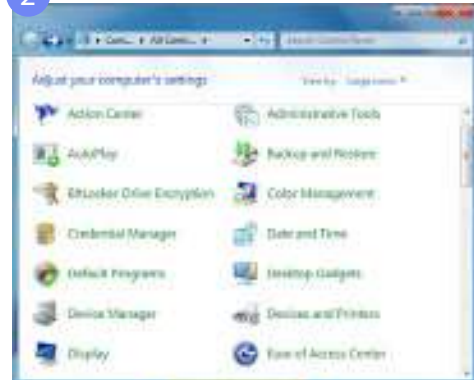
Changing the Resolution on Windows 7

Go to **Control Panel** → **Display** → **Screen Resolution** and change the resolution.

1



2



3

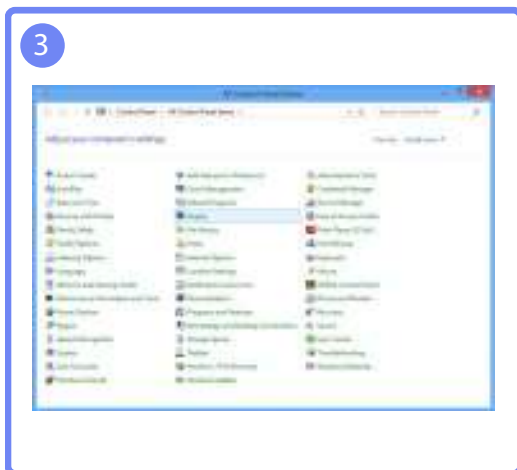
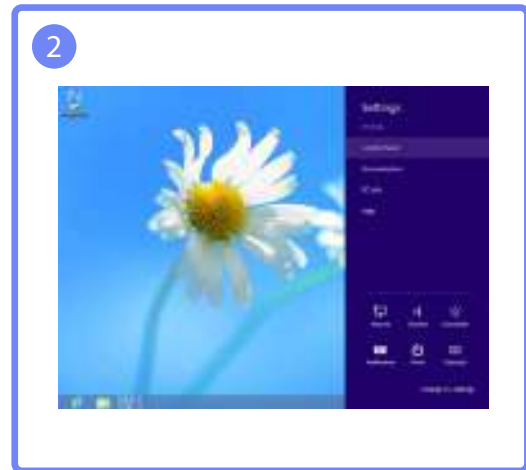


4



Changing the Resolution on Windows 8

Go to **Settings** → **Control Panel** → **Display** → **Screen Resolution** and change the resolution.



Configure the screen settings such as brightness.

## 3.1 Brightness

You can adjust the general brightness of the picture. (Range: 0~100)

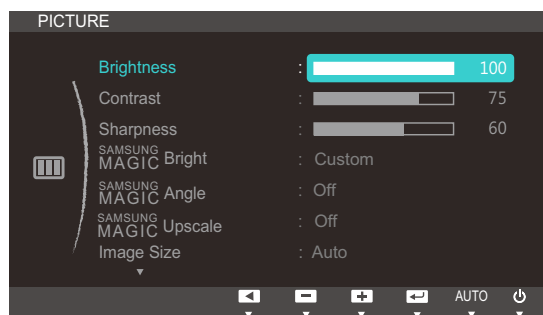
A higher value will make the picture appear brighter.



- This menu is not available when **SAMSUNG MAGIC Bright** is set to **Dynamic Contrast** mode.
- This menu is unavailable when **Eco Saving** is set.

### 3.1.1 Configuring Brightness

- 1 Press any button on the front of the product to display the Key Guide. Next, press [MENU] to display the corresponding menu screen.
- 2 Press [▲/▼] to move to **PICTURE** and press [□/Ⓜ] on the product.
- 3 Press [▲/▼] to move to **Brightness** and press [□/Ⓜ] on the product. The following screen will appear.



- 4 Adjust the **Brightness** using the [▲/▼] buttons.

## 3.2 Contrast

Adjust the contrast between the objects and background. (Range: 0~100)

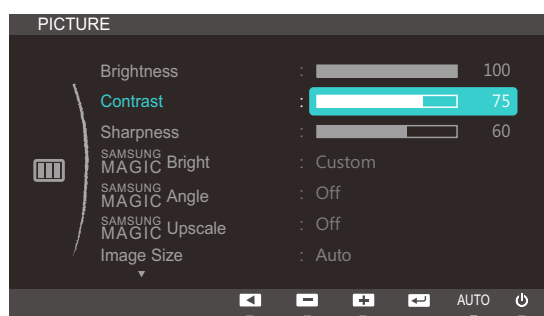
A higher value will increase the contrast to make the object appear clearer.



This menu is not available when **SAMSUNG MAGIC Bright** is in **Cinema** or **Dynamic Contrast** mode.

### 3.2.1 Configuring Contrast

- 1 Press any button on the front of the product to display the Key Guide. Next, press [MENU] to display the corresponding menu screen.
- 2 Press [▲/▼] to move to **PICTURE** and press [□/⊞] on the product.
- 3 Press [▲/▼] to move to **Contrast** and press [□/⊞] on the product. The following screen will appear.



- 4 Adjust the **Contrast** using the [▲/▼] buttons.

### 3.3 Sharpness

Make the outline of objects more clear or blurry. (Range: 0~100)

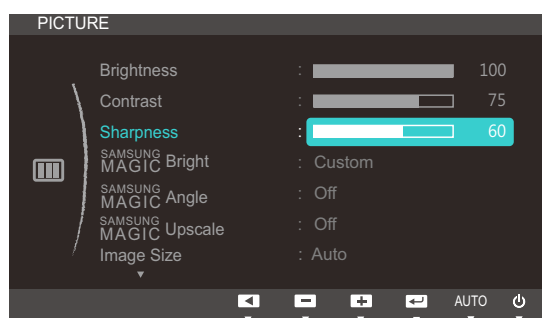
A higher value will make the outline of objects clearer.



- This menu is not available when **SAMSUNG MAGIC Bright** is in **Cinema** or **Dynamic Contrast** mode.
- This menu is not available when **SAMSUNG MAGIC Upscale** is in **Mode1** or **Mode2**.

#### 3.3.1 Configuring Sharpness

- 1 Press any button on the front of the product to display the Key Guide. Next, press [MENU] to display the corresponding menu screen.
- 2 Press [▲/▼] to move to **PICTURE** and press [□/□] on the product.
- 3 Press [▲/▼] to move to **Sharpness** and press [□/□] on the product. The following screen will appear.



- 4 Adjust the **Sharpness** using the [▲/▼] buttons.

## 3.4 SAMSUNG MAGIC Bright

This menu provides an optimum picture quality suitable for the environment where the product will be used.

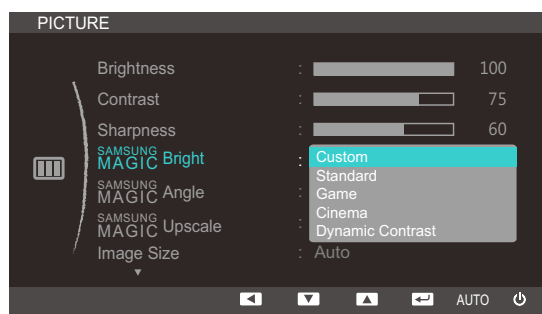


- This menu is unavailable when **Eco Saving** is set.
- This menu is not available when **SAMSUNG MAGIC Angle** is enabled.

You can customize the brightness to suit your preferences.

### 3.4.1 Configuring SAMSUNG MAGIC Bright

- 1 Press any button on the front of the product to display the Key Guide. Next, press [MENU] to display the corresponding menu screen.
- 2 Press [▲/▼] to move to **PICTURE** and press [□/⊞] on the product.
- 3 Press [▲/▼] to move to **SAMSUNG MAGIC Bright** and press [□/⊞] on the product. The following screen will appear.



- **Custom:** Customize the contrast and brightness as required.
  - **Standard:** Obtain a picture quality suitable for editing documents or using Internet.
  - **Game:** Obtain a picture quality suitable for playing games that involve many graphic effects and dynamic movements.
  - **Cinema:** Obtain the brightness and sharpness of TVs suitable for enjoying video and DVD content.
  - **Dynamic Contrast:** Obtain balanced brightness through automatic contrast adjustment.
- 4 Press [▲/▼] to move to the option you want and press [□/⊞].
  - 5 The selected option will be applied.

## 3.5 SAMSUNG MAGIC Angle

**SAMSUNG MAGIC Angle** allows you to configure the settings to obtain the optimum picture quality according to your viewing angle.

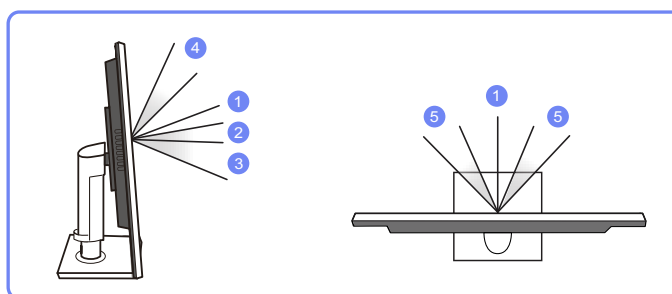
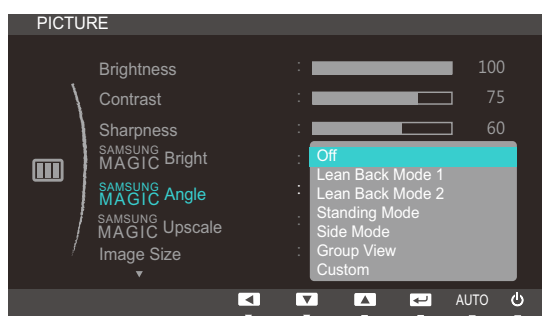


This menu is not available when **SAMSUNG MAGIC Bright** is in **Cinema** or **Dynamic Contrast** mode.

You can customize the angle to suit your preferences.

### 3.5.1 Configuring SAMSUNG MAGIC Angle

- 1 Press any button on the front of the product to display the Key Guide. Next, press [MENU] to display the corresponding menu screen.
- 2 Press [▲/▼] to move to **PICTURE** and press [□/Ⓜ] on the product.
- 3 Press [▲/▼] to move to **SAMSUNG MAGIC Angle** and press [□/Ⓜ] on the product. The following screen will appear.



- **Off** ①: Select this option to view directly in front of the product.
  - **Lean Back Mode 1** ②: Select this option to view from a place slightly lower than the product.
  - **Lean Back Mode 2** ③: Select this option to view from a place lower than Lean Back Mode 1.
  - **Standing Mode** ④: Select this option to view from a place higher than the product.
  - **Side Mode** ⑤: Select this option to view from either side of the product.
  - **Group View**: Select this option for more than one viewer to view from places ①, ④, and ⑤.
  - **Custom**: **Lean Back Mode 1** will be applied by default if **Custom** is selected.
- 4 Press [▲/▼] to move to the option you want and press [□/Ⓜ].
  - 5 The selected option will be applied.



## 3.6 SAMSUNG MAGIC Upscale

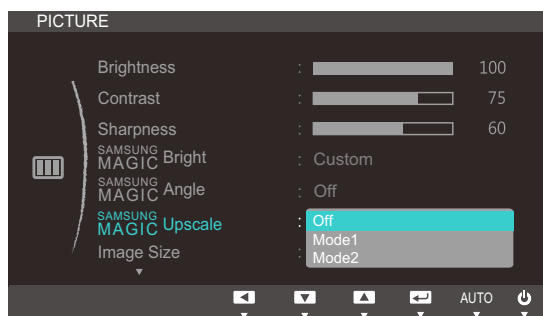
**SAMSUNG MAGIC Upscale** function can enhance the layers of the picture details and the vividness of the picture.



- The function has more obvious effects on low-resolution pictures.
- This menu is not available when **SAMSUNG MAGIC Bright** is in **Cinema** or **Dynamic Contrast** mode.

### 3.6.1 Configuring SAMSUNG MAGIC Upscale

- 1 Press any button on the front of the product to display the Key Guide. Next, press [MENU] to display the corresponding menu screen.
- 2 Press [▲/▼] to move to **PICTURE** and press [□/⊞] on the product.
- 3 Press [▲/▼] to move to **SAMSUNG MAGIC Upscale** and press [□/⊞] on the product. The following screen will appear.



Comparing with **Mode1**, **Mode2** has a stronger effect.

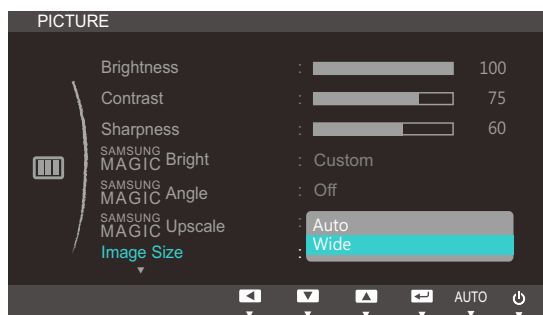
- 4 Press [▲/▼] to move to the option you want and press [□/⊞].
- 5 The selected option will be applied.

## 3.7 Image Size

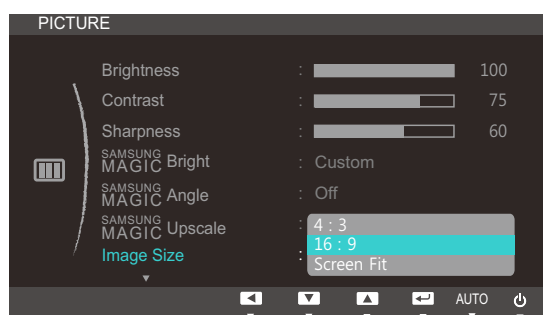
Change the picture size.

### 3.7.1 Changing the Image Size

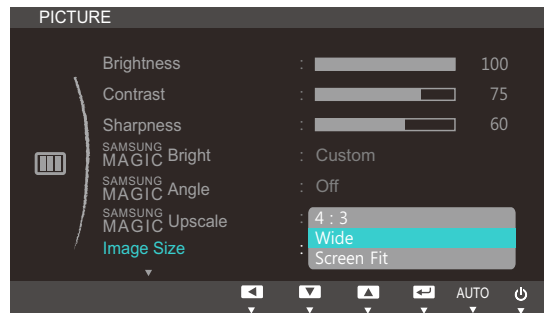
- 1 Press any button on the front of the product to display the Key Guide. Next, press [MENU] to display the corresponding menu screen.
- 2 Press [▲/▼] to move to **PICTURE** and press [□/⏏] on the product.
- 3 Press [▲/▼] to move to **Image Size** and press [□/⏏] on the product. The following screen will appear.



- **Auto**: Display the picture according to the aspect ratio of the input source.
- **Wide**: Display the picture in full screen regardless of the aspect ratio of the input source.



- **4:3**: Display the picture with an aspect ratio of 4:3. Suitable for videos and standard broadcasts.
- **16:9**: Display the picture with an aspect ratio of 16:9.
- **Screen Fit**: Display the picture with the original aspect ratio without cutting off.



- **4:3:** Display the picture with an aspect ratio of 4:3. Suitable for videos and standard broadcasts.
- **Wide:** Display the picture in full screen regardless of the aspect ratio of the input source.(S19C450BW/S19C450MW/S22C450BW/S22C450MW/S24C450BW/S24C450MW)
- **Screen Fit:** Display the picture with the original aspect ratio without cutting off.



Changing the screen size is available when the following conditions are satisfied,except S19C450BR and S19C450MR Models.

- A digital output device is connected using the DVI cable.
- The input signal is 480p, 576p, 720p, or 1080p and monitor can display normally ( Not every model can support all of these signals. ) .
- This can only be set when the external input is connected through DVI and **PC/AV Mode** is set to **AV**.

4 Press [**▲/▼**] to move to the option you want and press [**□/⏏**].

5 The selected option will be applied.

## 3.8 H-Position & V-Position

**H-Position:** Move the screen to the left or right.

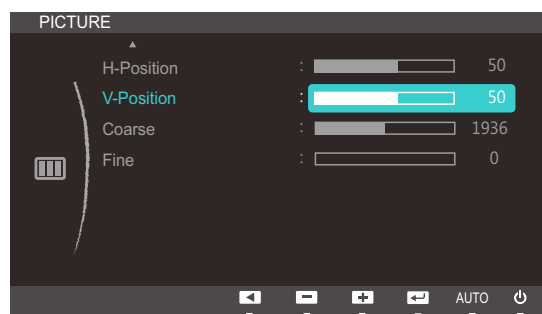
**V-Position:** Move the screen up or down.



- This menu is available in **Analog** mode.
- This menu is only available when **Image Size** is set to **Screen Fit** in **AV** Mode. When a 480P or 576P or 720P or 1080P signal is input in **AV** mode and the monitor can display normally, select **Screen Fit** to adjust horizontal position in 0-6 levels.

### 3.8.1 Configuring H-Position & V-Position

- 1 Press any button on the front of the product to display the Key Guide. Next, press **[MENU]** to display the corresponding menu screen.
- 2 Press **[▲/▼]** to move to **PICTURE** and press **[□/□]** on the product.
- 3 Press **[▲/▼]** to move to **H-Position** or **V-Position**, and press **[□/□]**. The following screen will appear.



- 4 Press **[▲/▼]** to configure **H-Position** or **V-Position**.

## 3.9 Coarse

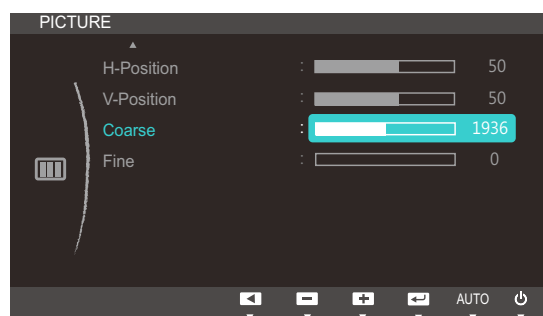
Adjust the screen frequency.



This menu is available in **Analog** mode only.

### 3.9.1 Adjusting Coarse

- 1 Press any button on the front of the product to display the Key Guide. Next, press [MENU] to display the corresponding menu screen.
- 2 Press [▲/▼] to move to **PICTURE** and press [□/⏏] on the product.
- 3 Press [▲/▼] to move to **Coarse** and press [□/⏏] on the product. The following screen will appear.



- 4 Adjust the **Coarse** using the [▲/▼] buttons.

## 3.10 Fine

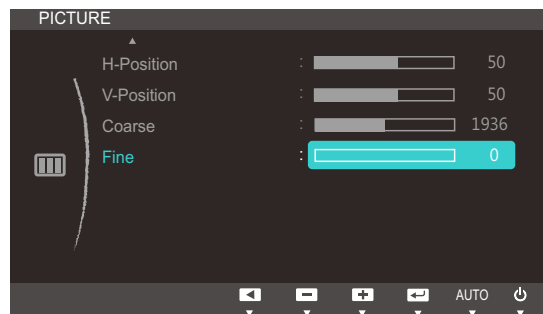
Fine-adjust the screen to obtain a vivid picture.



This menu is available in **Analog** mode only.

### 3.10.1 Adjusting Fine

- 1 Press any button on the front of the product to display the Key Guide. Next, press [MENU] to display the corresponding menu screen.
- 2 Press [▲/▼] to move to **PICTURE** and press [□/⊞] on the product.
- 3 Press [▲/▼] to move to **Fine** and press [□/⊞] on the product. The following screen will appear.



- 4 Adjust the **Fine** using the [▲/▼] buttons.

# 4

## Configuring Tint

Adjust the tint of the screen. This menu is not available when **SAMSUNG MAGICBright** is set to **Cinema** or **Dynamic Contrast** mode.

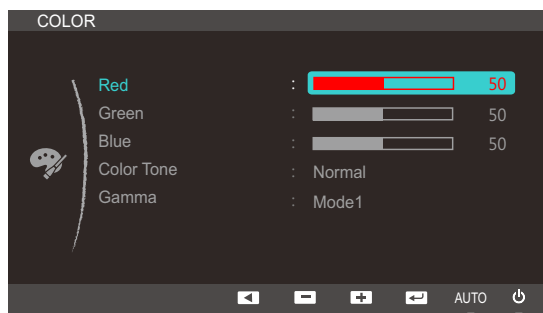
### 4.1 Red

Adjust the value of the color red in the picture. (Range: 0~100)

A higher value will increase the intensity of the color.

#### 4.1.1 Configuring Red

- 1 Press any button on the front of the product to display the Key Guide. Next, press [MENU] to display the corresponding menu screen.
- 2 Press [▲/▼] to move to **COLOR** and press [□/□] on the product.
- 3 Press [▲/▼] to move to **Red** and press [□/□] on the product. The following screen will appear.



- 4 Adjust the **Red** using the [▲/▼] buttons.

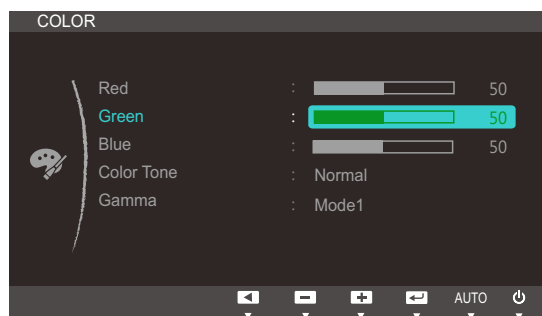
## 4.2 Green

Adjust the value of the color green in the picture. (Range: 0~100)

A higher value will increase the intensity of the color.

### 4.2.1 Configuring Green

- 1 Press any button on the front of the product to display the Key Guide. Next, press [MENU] to display the corresponding menu screen.
- 2 Press [▲/▼] to move to **COLOR** and press [□/⊞] on the product.
- 3 Press [▲/▼] to move to **Green** and press [□/⊞] on the product. The following screen will appear.



- 4 Adjust the **Green** using the [▲/▼] buttons.



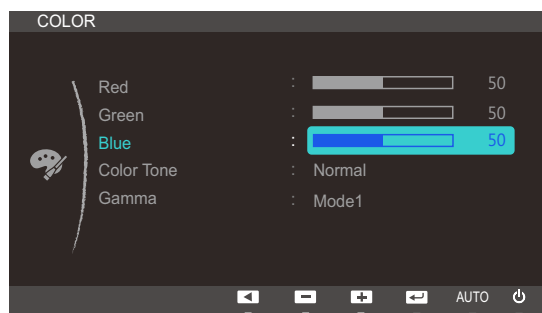
## 4.3 Blue

Adjust the value of the color blue in the picture. (Range: 0~100)

A higher value will increase the intensity of the color.

### 4.3.1 Configuring Blue

- 1 Press any button on the front of the product to display the Key Guide. Next, press [MENU] to display the corresponding menu screen.
- 2 Press [▲/▼] to move to **COLOR** and press [□/⏏] on the product.
- 3 Press [▲/▼] to move to **Blue** and press [□/⏏] on the product. The following screen will appear.



- 4 Adjust the **Blue** using the [▲/▼] buttons.

## 4.4 Color Tone

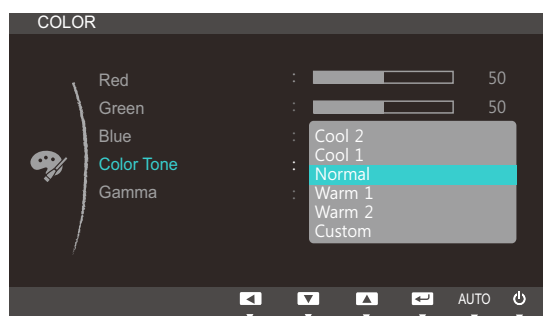
Adjust the general color tone of the picture.



This menu is not available when **SAMSUNG MAGIC Angle** is enabled.

### 4.4.1 Configuring the Color Tone Settings

- 1 Press any button on the front of the product to display the Key Guide. Next, press [MENU] to display the corresponding menu screen.
- 2 Press [▲/▼] to move to **COLOR** and press [□/⏏] on the product.
- 3 Press [▲/▼] to move to **Color Tone** and press [□/⏏] on the product. The following screen will appear.



- **Cool 2**: Set the color temperature to be cooler than **Cool 1**.
  - **Cool 1**: Set the color temperature to be cooler than **Normal** mode.
  - **Normal**: Display the standard color tone.
  - **Warm 1**: Set the color temperature to be warmer than **Normal** mode.
  - **Warm 2**: Set the color temperature to be warmer than **Warm 1**.
  - **Custom**: Customize the color tone.
- 4 Press [▲/▼] to move to the option you want and press [□/⏏].
  - 5 The selected option will be applied.

## 4.5 Gamma

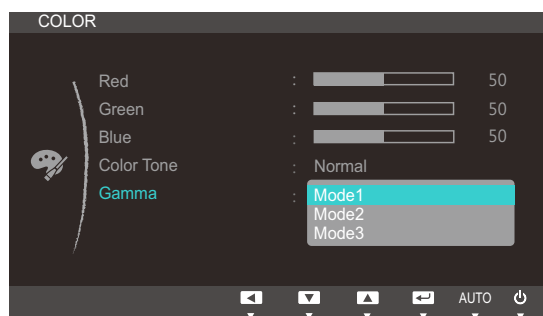
Adjust the mid-range brightness (Gamma) of the picture.



This menu is not available when **SAMSUNG MAGIC Angle** is enabled.

### 4.5.1 Configuring Gamma

- 1 Press any button on the front of the product to display the Key Guide. Next, press [MENU] to display the corresponding menu screen.
- 2 Press [▲/▼] to move to **COLOR** and press [□/□] on the product.
- 3 Press [▲/▼] to move to **Gamma** and press [□/□] on the product. The following screen will appear.



- 4 Press [▲/▼] to move to the option you want and press [□/□].
- 5 The selected option will be applied.

## 5.1 Language

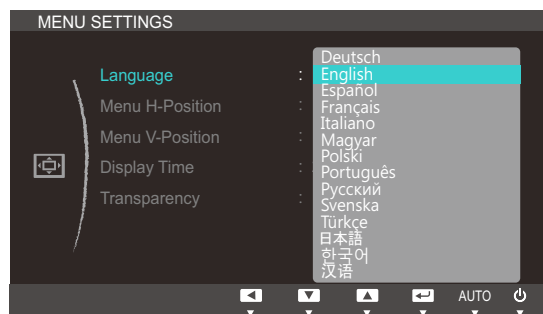
Set the menu language.



- A change to the language setting will only be applied to the onscreen menu display.
- It will not be applied to other functions on your PC.

### 5.1.1 Changing the Language

- 1 Press any button on the front of the product to display the Key Guide. Next, press [MENU] to display the corresponding menu screen.
- 2 Press [▲/▼] to move to **MENU SETTINGS** and press [□/⏏] on the product.
- 3 Press [▲/▼] to move to **Language** and press [□/⏏] on the product. The following screen will appear.



- 4 Press [▲/▼] to move to the language you want and press [□/⏏].
- 5 The selected option will be applied.

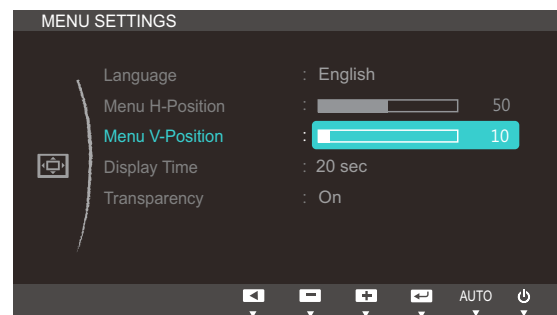
## 5.2 Menu H-Position & Menu V-Position

**Menu H-Position:** Move the menu position to the left or right.

**Menu V-Position:** Move the menu position up or down.

### 5.2.1 Configuring Menu H-Position & Menu V-Position

- 1 Press any button on the front of the product to display the Key Guide. Next, press **[MENU]** to display the corresponding menu screen.
- 2 Press **[▲/▼]** to move to **MENU SETTINGS** and press **[□/⏏]** on the product.
- 3 Press **[▲/▼]** to move to **Menu H-Position** or **Menu V-Position**, and press **[□/⏏]**. The following screen will appear.



- 4 Press **[▲/▼]** to configure **Menu H-Position** or **Menu V-Position**.

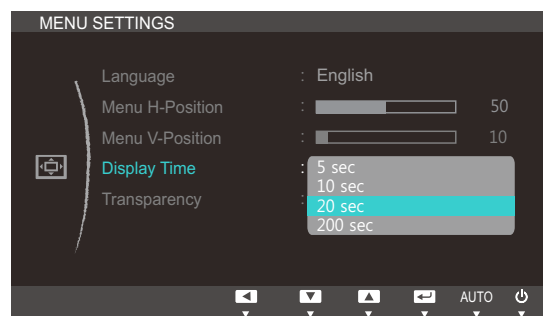
## 5.3 Display Time

Set the on-screen display (OSD) menu to automatically disappear if the menu is not used for a specified period of time.

**Display Time** can be used to specify the time after which you want the OSD menu to disappear.

### 5.3.1 Configuring Display Time

- 1 Press any button on the front of the product to display the Key Guide. Next, press **[MENU]** to display the corresponding menu screen.
- 2 Press **[▲/▼]** to move to **MENU SETTINGS** and press **[□/⏏]** on the product.
- 3 Press **[▲/▼]** to move to **Display Time** and press **[□/⏏]** on the product. The following screen will appear.



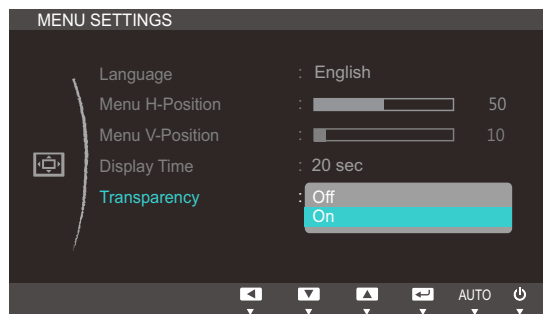
- 4 Press **[▲/▼]** to move to the option you want and press **[□/⏏]**.
- 5 The selected option will be applied.

## 5.4 Transparency

Set the transparency for the menu windows:

### 5.4.1 Changing Transparency

- 1 Press any button on the front of the product to display the Key Guide. Next, press [MENU] to display the corresponding menu screen.
- 2 Press [▲/▼] to move to **MENU SETTINGS** and press [⏏/⏏] on the product.
- 3 Press [▲/▼] to move to **Transparency** and press [⏏/⏏] on the product. The following screen will appear.



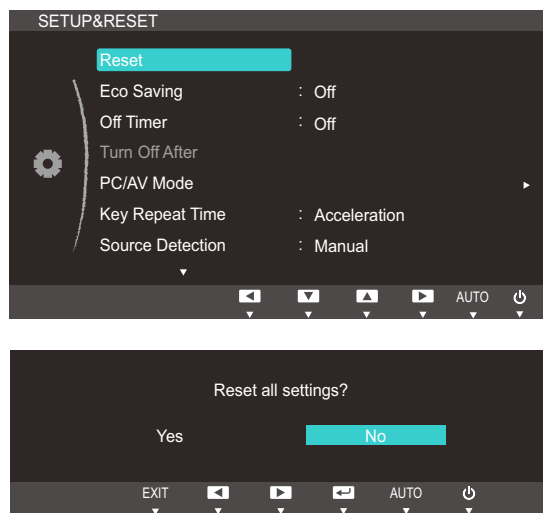
- 4 Press [▲/▼] to move to the option you want and press [⏏/⏏].
- 5 The selected option will be applied.

## 6.1 Reset

Return all the settings for the product to the default factory settings.

### 6.1.1 Initializing Settings (Reset)

- 1 Press any button on the front of the product to display the Key Guide. Next, press [MENU] to display the corresponding menu screen.
- 2 Press [▲/▼] to move to **SETUP&RESET** and press [⏏/⏏] on the product.
- 3 Press [▲/▼] to move to **Reset** and press [⏏/⏏] on the product. The following screen will appear.



- 4 Press [▲/▼] to move to the option you want and press [⏏/⏏].
- 5 The selected option will be applied.



## 6.2 Eco Saving

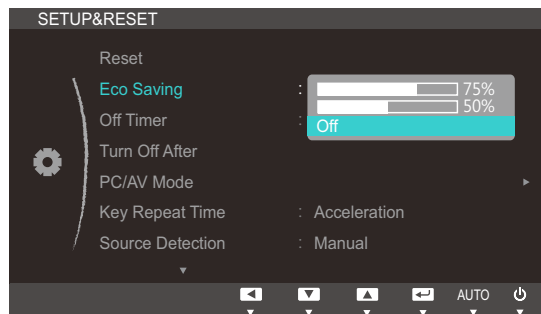
The **Eco Saving** function reduces power consumption by controlling the electric current used by the monitor panel.



This menu is not available when **SAMSUNG MAGICBright** is in **Dynamic Contrast** mode.

### 6.2.1 Configuring Eco Saving

- 1 Press any button on the front of the product to display the Key Guide. Next, press [MENU] to display the corresponding menu screen.
- 2 Press [▲/▼] to move to **SETUP&RESET** and press [□/⏏] on the product.
- 3 Press [▲/▼] to move to **Eco Saving** and press [□/⏏] on the product. The following screen will appear.



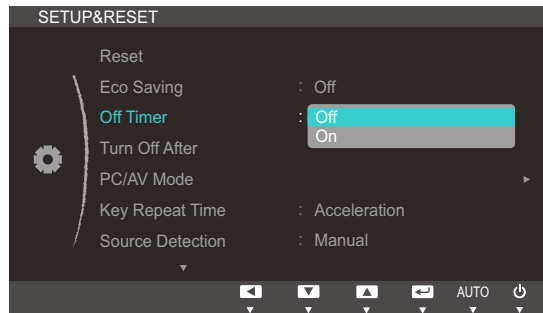
- **75%** : Change the monitor power consumption to 75% of the default level.
  - **50%** : Change the monitor power consumption to 50% of the default level.
  - **Off**: Deactivate the **Eco Saving** function.
- 4 Press [▲/▼] to move to the option you want and press [□/⏏].
  - 5 The selected option will be applied.

## 6.3 Off Timer

You can set the product to automatically turn off.

### 6.3.1 Configuring Off Timer

- 1 Press any button on the front of the product to display the Key Guide. Next, press [MENU] to display the corresponding menu screen.
- 2 Press [▲/▼] to move to **SETUP&RESET** and press [□/□] on the product.
- 3 Press [▲/▼] to move to **Off Timer** and press [□/□] on the product. The following screen will appear.



- **Off:** Deactivate the off timer so that the product does not power off automatically.
  - **On:** Activate the off timer so that the product powers off automatically.
- 4 Press [▲/▼] to move to the option you want and press [□/□].
  - 5 The selected option will be applied.

## 6.4 Turn Off After

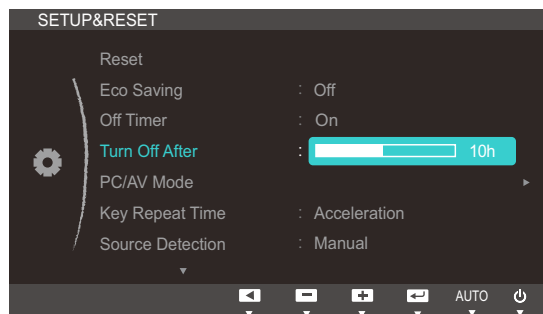
The off timer can be set within a range of 1 to 23 hours. The product will automatically power off after the specified number of hours.



This menu is available only when **Off Timer** is set to **On**.

### 6.4.1 Configuring Turn Off After

- 1 Press any button on the front of the product to display the Key Guide. Next, press **[MENU]** to display the corresponding menu screen.
- 2 Press **[▲/▼]** to move to **SETUP&RESET** and press **[□/⏏]** on the product.
- 3 Press **[▲/▼]** to move to **Turn Off After** and press **[□/⏏]** on the product. The following screen will appear.



- 4 Press **[▲/▼]** to configure **Turn Off After**.

## 6.5 PC/AV Mode

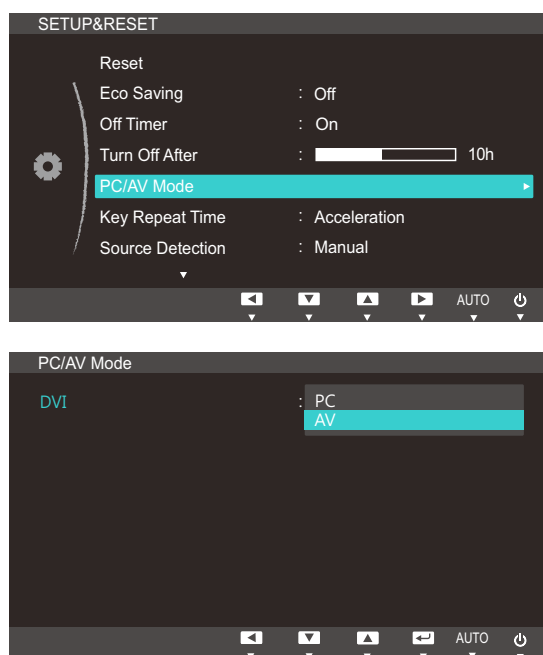
Set **PC/AV Mode** to **AV**. The picture size will be enlarged. This option is useful when you view a movie.



- This function does not support Analog mode.
- Supplied for the wide models only such as 16:9 or 16:10.
- If the monitor (when set to DVI) is in power saving mode or is displaying the message **Check Signal Cable**, press the [MENU] button to display the On Screen Display (OSD). You can select **PC** or **AV**.

### 6.5.1 Configuring PC/AV Mode

- 1 Press any button on the front of the product to display the Key Guide. Next, press [MENU] to display the corresponding menu screen.
- 2 Press [▲/▼] to move to **SETUP&RESET** and press [⏏/⏏] on the product.
- 3 Press [▲/▼] to move to **PC/AV Mode** and press [⏏/⏏] on the product. The following screen will appear.



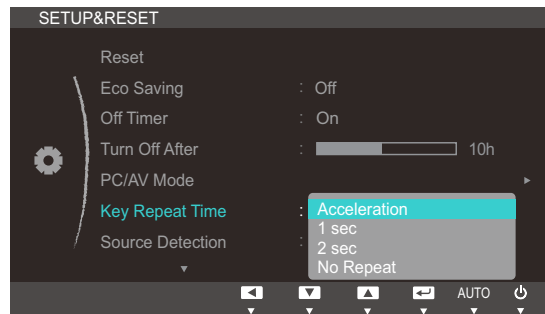
- 4 Press [▲/▼] to move to the option you want and press [⏏/⏏].
- 5 The selected option will be applied.

## 6.6 Key Repeat Time

Control the response rate of a button when the button is pressed.

### 6.6.1 Configuring Key Repeat Time

- 1 Press any button on the front of the product to display the Key Guide. Next, press [MENU] to display the corresponding menu screen.
- 2 Press [▲/▼] to move to **SETUP&RESET** and press [⏏/⏏] on the product.
- 3 Press [▲/▼] to move to **Key Repeat Time** and press [⏏/⏏] on the product. The following screen will appear.



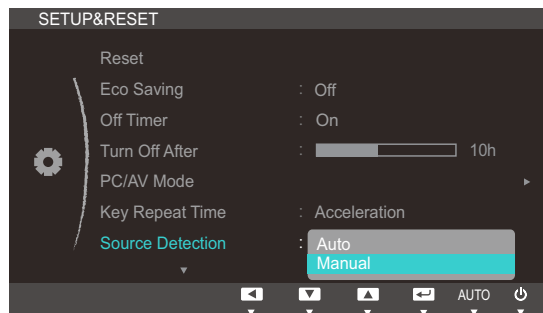
- **Acceleration**, **1 sec**, or **2 sec** can be selected. If **No Repeat** is selected, a command responds only once when a button is pressed.
- 4 Press [▲/▼] to move to the option you want and press [⏏/⏏].
  - 5 The selected option will be applied.

## 6.7 Source Detection

You can activate **Source Detection**.

### 6.7.1 Configuring Source Detection

- 1 Press any button on the front of the product to display the Key Guide. Next, press [MENU] to display the corresponding menu screen.
- 2 Press [▲/▼] to move to **SETUP&RESET** and press [□/⏏] on the product.
- 3 Press [▲/▼] to move to **Source Detection** and press [□/⏏] on the product. The following screen will appear.



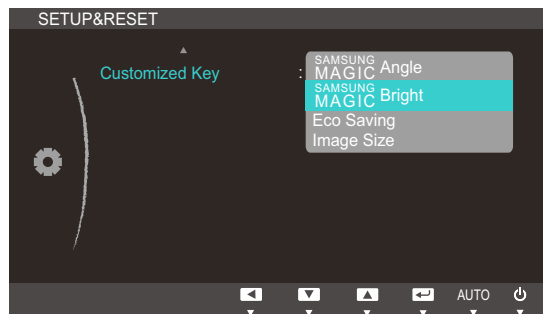
- **Auto**: The input source is automatically recognized.
  - **Manual**: Manually select an input source.
- 4 Press [▲/▼] to move to the option you want and press [□/⏏].
  - 5 The selected option will be applied.

## 6.8 Customized Key

You can customize **Customized Key** as follows.

### 6.8.1 Configuring Customized Key

- 1 Press any button on the front of the product to display the Key Guide. Next, press [MENU] to display the corresponding menu screen.
- 2 Press [▲/▼] to move to **SETUP&RESET** and press [□/□] on the product.
- 3 Press [▲/▼] to move to **Customized Key** and press [□/□] on the product. The following screen will appear.



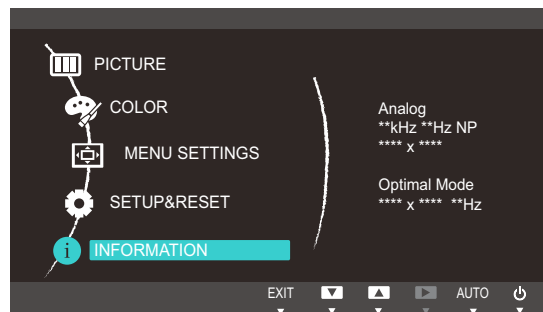
- **SAMSUNG MAGIC Angle** - **SAMSUNG MAGIC Bright** - **Eco Saving** - **Image Size**
- 4 Press [▲/▼] to move to the option you want and press [□/□].
  - 5 The selected option will be applied.

## 7.1 INFORMATION

View the current input source, frequency and resolution.

### 7.1.1 Displaying INFORMATION

- 1 Press any button on the front of the product to display the Key Guide. Next, press [MENU] to display the corresponding menu screen.
- 2 Press [▲/▼] to move to **INFORMATION**. The current input source, frequency and resolution will appear.



The displayed menu items may vary depending on the model.



## 7.2 Configuring Brightness and Contrast in the Initial Screen

Adjust the **Brightness** or **Contrast** setting using the [⊙] buttons in the initial screen (where no OSD menu is displayed).

- 1 Press any button on the front of the product (when no menu screen is displayed) to display the Key guide. Next, press [⊙]. The following screen will appear.



- 2 Press the [↔] button to alternate between the **Brightness** and **Contrast** settings.
- 3 Adjust the **Brightness** or **Contrast** setting using the [▲/▼] buttons.

### 7.3 Configuring Volume in the Initial Screen

Adjust the **Volume** by pressing the [⊙] button when the Key Guide is displayed.

- 1 Press any button on the front of the product (when no menu screen is displayed) to display the Key guide. Next, press [⊙]. The following screen will appear.



- 2 Adjust the **Volume** setting using the [▲/▼] buttons.



- Applicable to the models that have speakers only.
- **Volume** can be adjusted if a cable is connected to the [IN] port.

## 8.1 Magic Tune



### 8.1.1 What is MagicTune?



MagicTune is a software program that helps with monitor adjustments by providing comprehensive descriptions of monitor functions and easy-to-understand guidelines.

You can adjust the product with the mouse and the keyboard without using the operating buttons of the product.

### 8.1.2 Installing the Software

- 1 Insert the installation CD into the CD-ROM drive.
- 2 Select the MagicTune setup program.
  -  If the pop-up screen for the software installation does not appear on the main screen, find and double-click the MagicTune setup file on the CD-ROM.
- 3 Select the installation language and click "Next".
- 4 Complete the remaining software installation steps according to the instructions displayed on the screen.
  - 
    - The software may not work properly if you do not restart the computer after the installation.
    - The MagicTune icon may not appear depending on the computer system and the product specifications.
    - If the shortcut icon does not appear, press the F5 key.

### Restrictions and Problems with the Installation (MagicTune™)

The installation of MagicTune™ may be affected by the graphics card, motherboard and the networking environment.

### System Requirements

#### OS

- Windows XP, Windows Vista, Windows 7, Windows 8

## 8.1.3 Removing the Software

You can only remove MagicTune™ through [Add or Remove Programs] in Windows.

To remove MagicTune™, complete the following steps.

- 1 Click [Start] select [Settings], and select [Control Panel] from the menu.  
For Windows XP, click [Start], and select [Control Panel] from the menu.
- 2 Double-click the [Add or Remove Programs] icon in the Control Panel.
- 3 In the [Add/Remove] window, find and select MagicTune™ so that it is highlighted.
- 4 Click [Change or Remove Programs] to remove the software.
- 5 Select [Yes] to start removing MagicTune™.
- 6 Wait until a message box appears informing you that the software has been removed completely.



For technical support, the FAQ (frequently asked questions) or information about the software upgrade for MagicTune™, please visit our website([http://www.samsung.com/us/consumer/learningresources/monitor/magetune/pop\\_intro.html](http://www.samsung.com/us/consumer/learningresources/monitor/magetune/pop_intro.html)).

## 8.2 MultiScreen



MultiScreen enables users to use the monitor by partitioning multiple sections.

### 8.2.1 Installing the Software

1 Insert the installation CD into the [CD-ROM drive].

2 Select the "MultiScreen" setup program.



If the pop-up screen for the software installation does not appear on the main screen, find and double-click the "MultiScreen" setup file on the [CD-ROM].

3 When the Installation Wizard appears, click [**Next**].

4 Follow the instructions given on the screen to proceed with installation.



- The software may not work properly if you do not restart the computer after the installation.
- The "MultiScreen" icon may not appear depending on the computer system and the product specifications.
- If the shortcut icon does not appear, press the "F5" key.

### Restrictions and Problems with the Installation (MultiScreen)

The "MultiScreen" installation may be affected by the [Graphics card], [Motherboard] and the [Networking environment].

#### Operating System

##### "OS"

- "Windows 2000"
- "Windows XP Home Edition"
- "Windows XP Professional"
- "Windows Vista 32bit"
- "Windows 7 32bit"
- "Windows 8 32bit"



For "MultiScreen", the operating systems "Windows 2000" or later is recommended.

##### "Hardware"

- At least 32MB of memory
- At least 60MB of free space on the hard disk drive

## 8.2.2 Removing the Software

Click **[Start]**, select **[Settings]/[Control Panel]**, and then double-click **[Add or Remove Programs]**.



Select "MultiScreen" from the program list and click the **[Add/Delete]** button.

## 8.3 MagicRotation



The MagicRotation Software from Samsung Electronics, Inc. provides the user with a rotation feature (0, 90, 180, 270 orientation) that facilitates the optimum utilization of computer display screen, better viewing and improved user productivity.

### 8.3.1 Installing the Software

- 1 Insert the installation CD into the [CD-ROM drive].
- 2 Select the "MagicRotation" setup program.
  -  If the pop-up screen for the software installation does not appear on the main screen, find and double-click the "MagicRotation" setup file on the [CD-ROM].
- 3 Select the installation language and click [**Next**].
- 4 Complete the remaining software installation steps according to the instructions displayed on the screen.
  - 
    - The software may not work properly if you do not restart the computer after the installation.
    - The "MagicRotation" icon may not appear depending on the computer system and the product specifications.
    - If the shortcut icon does not appear, press the "F5" key.

### Restrictions and Problems with the Installation (MagicRotation)

The installation of "MagicRotation" may be affected by the [Graphics card], [Motherboard] and the [Networking environment].

#### Limitation

- 1 The "Display Driver" should be properly loaded for the MagicRotation to work properly.  
The installed "Display Driver" should be the latest driver supplied by the vendor.
- 2 If some applications like Windows Media Player, Real Player, etc. are not displaying movie files properly in 90, 180 and 270 orientations then do the following :
  - Close the application.
  - Select the Orientation (90, 180, 270) you want to view the application.
  - Relaunch the application.

In most cases this should fix the problem.

- 3 User Applications using OpenGL and DirectDraw (3D drawing) will not function as per the orientation mode selected (90, 180, 270).  
e.g. 3D games
- 4 DOS based applications in Full Screen Mode will not function as per the orientation mode selected (90, 180, 270).
- 5 Dual is not supported in Windows™ 98, ME, NT 4.0.
- 6 MagicRotation does not provide support for 24 bits per pixel (Bit depth/Color Quality).
- 7 If you are changing your Graphic Card it is recommended that you uninstall the MagicRotation Software before doing so.

### System Requirements

#### "OS"

- "Windows™ 98 SE "
- "Windows™ Me "
- "Windows™ NT 4.0 "
- "Windows™ 2000 "
- "Windows XP Home Edition "
- "Windows XP Professional "
- "Windows Vista 32Bit "
- "Windows 7 32Bit"
- "Windows 8 32Bit"



For MagicRotation, Windows 2000 or later is recommended.

#### "Hardware"

- At least 128MB of memory(recommended)
- At least 25MB of free space on the hard disk drive

#### "Service Packs"

- It is recommended that your System has the latest Service Pack installed.
- For Windows™ NT 4.0, it is recommended to install Internet Explorer 5.0 and above with Active Desktop component.



- For more information, refer to the website([http://www.samsung.com/us/consumer/learningresources/monitor/magicrotation/pop\\_download.html](http://www.samsung.com/us/consumer/learningresources/monitor/magicrotation/pop_download.html)).
- Windows™ is registered trademark of Microsoft Corporation,Inc.



## 8.3.2 Removing the Software

You can only remove MagicRotation through **[Add or Remove Programs]** in Windows.

To remove "MagicRotation", complete the following steps.

- 1 Click [Start] select [Settings], and select [Control Panel] from the menu.  
For Windows XP, click [Start], and select [Control Panel] from the menu.
- 2 Double-click the [Add or Remove Programs] icon in the Control Panel.
- 3 In the [Add/Remove] window, find and select MagicRotation so that it is highlighted.
- 4 Click [Change or Remove Programs] to remove the software.
- 5 Select [Yes] to start removing MagicRotation.
- 6 Wait until a message box appears informing you that the software has been removed completely.



For technical support, the FAQ (frequently asked questions) or information about the software upgrade for MagicRotation, please visit our website([http://www.samsung.com/us/consumer/learningresources/monitor/magicrotation/pop\\_download.html](http://www.samsung.com/us/consumer/learningresources/monitor/magicrotation/pop_download.html)).

## 9.1 Requirements Before Contacting Samsung Customer Service Center

### 9.1.1 Testing the Product



Before calling Samsung Customer Service Center, test your product as follows. If the problem persists, contact Samsung Customer Service Center.

Check if your product is operating normally by using the product test function.

If the screen is turned off and the power indicator blinks even though the product is properly connected to a PC, perform a self-diagnosis test.

- 1 Power off both the PC and product.
- 2 Disconnect the cables from the product.
- 3 Power on the product.
- 4 If the message "**Check Signal Cable**" appears, the product is working normally.



If the screen remains blank, check the PC system, video controller and cable.

### 9.1.2 Checking the Resolution and Frequency

For a mode that exceeds the supported resolution (refer to "10.3 Standard Signal Mode Table"), the message "**Not Optimum Mode**" will appear for a short time.

### 9.1.3 Check the following.

Installation issue (PC mode)	
The screen keeps switching on and off.	Check the cable connection between the product and PC, and ensure the connectors are locked. (Refer to "2.3 Connecting and Using a PC")
Screen issue	
The power LED is off. The screen will not switch on.	Check that the power cable is connected properly. (Refer to "2.3 Connecting and Using a PC")
The message " <b>Check Signal Cable</b> " appears.	Check that the cable is properly connected to the product. (Refer to "2.3 Connecting and Using a PC")
	Check that the device connected to the product is powered on.

Screen issue	
"Not Optimum Mode" is displayed.	This message appears if the signal from the graphics card exceeds the maximum resolution or frequency for the product.
	Change the maximum resolution and frequency to suit the product performance, referring to Standard Signal Mode Table (page 93).
The images on the screen look distorted.	Check the cable connection to the product (Refer to "2.3 Connecting and Using a PC")
The screen is not clear. The screen is blurry.	Adjust <b>Coarse</b> (page 45) and <b>Fine</b> (page 46).
	Remove any accessories (video extension cable, etc.) and try again.
	Set the resolution and frequency to the recommended level. (Refer to "10.1 General")
The screen appears unstable and shaky.	Check that the resolution and frequency for the PC are within the range of resolution and frequency compatible with the product. Next, if required, change the settings, referring to Standard Signal Mode Table (page 93) in this manual and the <b>INFORMATION</b> menu on the product.
There are shadows or ghost images left on the screen.	
The screen is too bright. The screen is too dark.	Adjust <b>Brightness</b> (page 36) and <b>Contrast</b> (page 37).
Screen color is inconsistent.	Change the <b>COLOR</b> settings. (Refer to "Configuring Tint")
The colors on the screen have a shadow and are distorted.	Change the <b>COLOR</b> settings. (Refer to "Configuring Tint")
White does not really look white.	Change the <b>COLOR</b> settings. (Refer to "Configuring Tint")
There is no image on the screen and the power LED blinks every 0.5 to 1 second.	The product is operating in power-saving mode.
	Press any key on the keyboard or move the mouse to return to normal operating mode.
Sound issue	
There is no sound.	Check the connection of the audio cable or adjust the volume.
	Check the volume.

Sound issue	
The volume is too low.	Adjust the volume.
	If the volume is still low after turning it up to the maximum level, adjust the volume on your PC sound card or software program.
Source device issue	
A beeping sound is heard when my PC is booting.	If a beeping sound is heard when your PC is booting, have your PC serviced.

## 9.2 Q &amp; A

Question	Answer
How can I change the frequency?	<p>Set the frequency on your graphics card.</p> <ul style="list-style-type: none"> <li>• Windows XP: Go to <b>Control Panel</b> → <b>Appearance and Themes</b> → <b>Display</b> → <b>Settings</b> → <b>Advanced</b> → <b>Monitor</b>, and adjust <b>Refresh rate</b> under <b>Monitor settings</b>.</li> <li>• Windows ME/2000: Go to <b>Control Panel</b> → <b>Display</b> → <b>Settings</b> → <b>Advanced</b> → <b>Monitor</b>, and adjust <b>Refresh rate</b> under <b>Monitor settings</b>.</li> <li>• Windows Vista: Go to <b>Control Panel</b> → <b>Appearance and Personalization</b> → <b>Personalization</b> → <b>Display Settings</b> → <b>Advanced Settings</b> → <b>Monitor</b>, and adjust <b>Refresh rate</b> under <b>Monitor settings</b>.</li> <li>• Windows 7: Go to <b>Control Panel</b> → <b>Appearance and Personalization</b> → <b>Display</b> → <b>Screen Resolution</b> → <b>Advanced settings</b> → <b>Monitor</b>, and adjust <b>Refresh rate</b> under <b>Monitor settings</b>.</li> <li>• Windows 8: Go to <b>Settings</b> → <b>Control Panel</b> → <b>Appearance and Personalization</b> → <b>Display</b> → <b>Screen Resolution</b> → <b>Advanced settings</b> → <b>Monitor</b>, and adjust <b>Refresh rate</b> under <b>Monitor settings</b>.</li> </ul>

Question	Answer
How can I change the resolution?	<ul style="list-style-type: none"> <li>• Windows XP: Go to <b>Control Panel</b> → <b>Appearance and Themes</b> → <b>Display</b> → <b>Settings</b>, and adjust the resolution.</li> <li>• Windows ME/2000: Go to <b>Control Panel</b> → <b>Display</b> → <b>Settings</b>, and adjust the resolution.</li> <li>• Windows Vista: Go to <b>Control Panel</b> → <b>Appearance and Personalization</b> → <b>Personalize</b> → <b>Display Settings</b>, and adjust the resolution.</li> <li>• Windows 7: Go to <b>Control Panel</b> → <b>Appearance and Personalization</b> → <b>Display</b> → <b>Adjust Resolution</b>, and adjust the resolution.</li> <li>• Windows 8: Go to <b>Settings</b> → <b>Control Panel</b> → <b>Appearance and Personalization</b> → <b>Display</b> → <b>Adjust Resolution</b>, and adjust the resolution.</li> </ul>
How do I set power-saving mode?	<ul style="list-style-type: none"> <li>• Windows XP: Set power-saving mode in <b>Control Panel</b> → <b>Appearance and Themes</b> → <b>Display</b> → <b>Screen Saver Settings</b> or BIOS SETUP on the PC.</li> <li>• Windows ME/2000: Set power-saving mode in <b>Control Panel</b> → <b>Display</b> → <b>Screen Saver Settings</b> or BIOS SETUP on the PC.</li> <li>• Windows Vista: Set power-saving mode in <b>Control Panel</b> → <b>Appearance and Personalization</b> → <b>Personalize</b> → <b>Screen Saver Settings</b> or BIOS SETUP on the PC.</li> <li>• Windows 7: Set power-saving mode in <b>Control Panel</b> → <b>Appearance and Personalization</b> → <b>Personalize</b> → <b>Screen Saver Settings</b> or BIOS SETUP on the PC.</li> <li>• Windows 8: Set power-saving mode in <b>Settings</b> → <b>Control Panel</b> → <b>Appearance and Personalization</b> → <b>Personalize</b> → <b>Screen Saver Settings</b> or BIOS SETUP on the PC.</li> </ul>



Refer to the user manual for your PC or graphics card for further instructions on adjustment.



# Specifications

## 10.1 General

Model Name		S19C450BW	S19C450MW	S19C450BR
Panel	Size	19.0 Inches (48 cm)	19.0 Inches (48 cm)	19.0 Inches (48 cm)
	Display area	408.24 mm (H) x 255.15 mm (V) 16.1 Inches (H) x 10.04 Inches (V)	408.24 mm (H) x 255.15 mm (V) 16.1 Inches (H) x 10.04 Inches (V)	376.32 mm (H) x 301.06 mm (V) 14.8 Inches (H) x 11.9 Inches (V)
	Pixel Pitch	0.2835 mm (H) x 0.2835 mm (V) 0.011 Inches (H) x 0.011 Inches (V)	0.2835 mm (H) x 0.2835 mm (V) 0.011 Inches (H) x 0.011 Inches (V)	0.294 mm (H) x 0.294 mm (V) 0.012 Inches (H) x 0.012 Inches (V)
Synchronization	Horizontal Frequency	30 ~ 81 kHz		
	Vertical Frequency	56 ~ 75 Hz		
Display Color		16.7M		
Resolution	Optimum Resolution	1440x900@60Hz		1280x1024@60Hz
	Maximum Resolution	1440x900@75Hz		1280x1024@75Hz
Maximum Pixel Clock		136 MHz (Analog,Digital)		135 MHz (Analog,Digital)
Power Supply		This product uses 100 to 240V. Refer to the label at the back of the product as the standard voltage can vary in different countries.		
Signal connectors		15pin-to-15pin D-sub cable, Detachable DVI-D to DVI-D connector, Detachable		



## Specifications

Model Name		S19C450BW	S19C450MW	S19C450BR
Dimensions (W x H x D) / Weight	Without Stand	439.4 x 289.9 x 54.8 mm 17.3 x 11.4 x 2.2 Inches	439.4 x 289.9 x 54.8 mm 17.3 x 11.4 x 2.2 Inches	407 x 336 x 55 mm 16.0 x 13.2 x 2.2 Inches
	With Stand	MIN: 439.4 x 323.2 x 210 mm / 4.25 kg 17.3 x 12.7 x 8.3 Inches / 9.37 lbs MAX: 439.4 x 423.2 x 210 mm / 4.25 kg 17.3 x 16.7 x 8.3 Inches / 9.37 lbs	MIN: 439.4 x 323.2 x 210 mm / 4.25 kg 17.3 x 12.7 x 8.3 Inches / 9.37 lbs MAX: 439.4 x 423.2 x 210 mm / 4.25 kg 17.3 x 16.7 x 8.3 Inches / 9.37 lbs	MIN: 407 x 369 x 210 mm / 4.45 kg 16.0 x 14.5 x 8.3 Inches / 9.81 lbs MAX: 407 x 469 x 210 mm / 4.45 kg 16.0 x 18.5 x 8.3 Inches / 9.81 lbs
VESA Mounting Interface		100 mm x 100 mm 3.9 Inches x 3.9 Inches (For use with Specialty(Arm) Mounting hardware.)		
Environmental considerations	Operating	Temperature : 50°F – 104°F (10°C – 40°C) Humidity : 10 % – 80 %, non-condensing		
	Storage	Temperature : -4°F – 113°F (-20°C – 45°C) Humidity : 5 % – 95 %, non-condensing		
Plug-and-Play		This monitor can be installed and used with any Plug-and-Play compatible systems. Two-way data exchange between the monitor and PC system optimizes the monitor settings. Monitor installation takes place automatically. However, you can customize the installation settings if desired.		
Panel Dots (Pixels)		Due to the nature of the manufacturing of this product, approximately 1 pixel per million (1ppm) may be brighter or darker on the LCD panel. This does not affect product performance.		





## Specifications

Model Name		S19C450MR	S20C450B	S22C450B
Panel	Size	19 Inches (48 cm)	20.0 Inches (50 cm)	21.5 Inches (54 cm)
	Display area	376.32 mm (H) x 301.06 mm (V) 14.8 Inches (H) x 11.9 Inches (V)	442.8 mm (H) x 249.08 mm (V) 17.4 Inches (H) x 9.8 Inches (V)	476.64 mm (H) x 268.11 mm (V) 18.8 Inches (H) x 10.6 Inches (V)
	Pixel Pitch	0.294 mm (H) x 0.294 mm (V) 0.012 Inches (H) x 0.012 Inches (V)	0.27675 mm (H) x 0.27675 mm (V) 0.011 Inches (H) x 0.011 Inches (V)	0.24825 mm (H) x 0.24825 mm (V) 0.010 Inches (H) x 0.010 Inches (V)
Synchronization	Horizontal Frequency	30 ~ 81 kHz		
	Vertical Frequency	56 ~ 75 Hz		
Display Color		16.7M		
Resolution	Optimum Resolution	1280x1024@60Hz	1600x900@60Hz	1920x1080@60Hz
	Maximum Resolution	1280x1024@75Hz	1600x900@60Hz	1920x1080@60Hz
Maximum Pixel Clock		135 MHz (Analog,Digital)	136 MHz (Analog,Digital)	148 MHz (Analog,Digital)
Power Supply		This product uses 100 to 240V. Refer to the label at the back of the product as the standard voltage can vary in different countries.		
Signal connectors		15pin-to-15pin D-sub cable, Detachable DVI-D to DVI-D connector, Detachable		



## Specifications

Model Name		S19C450MR	S20C450B	S22C450B
Dimensions (W x H x D) / Weight	Without Stand	407 x 336 x 55 mm 16.0 x 13.2 x 2.2 Inches	473.8 x 284 x 54.4 mm 18.7 x 11.2 x 2.1 Inches	504.3 x 301.9 x 55.45 mm 19.9 x 11.9 x 2.2 Inches
	With Stand	MIN: 407 x 369 x 210 mm / 4.45 kg 16.0 x 14.5 x 8.3 Inches / 9.81 lbs MAX: 407 x 469 x 210 mm / 4.45 kg 16.0 x 18.5 x 8.3 Inches / 9.81 lbs	MIN: 473.8 x 317.1 x 210 mm / 3.8kg 18.7 x 12.5 x 8.3 Inches / 8.38 lbs MAX: 473.8 x 417.1 x 210 mm / 3.8 kg 18.7 x 16.4 x 8.3 Inches / 8.38 lbs	MIN: 504.3 x 325.35 x 210 mm / 4.5 kg 19.9 x 12.8 x 8.3 Inches / 9.92 lbs MAX: 504.3 x 425.35 x 210 mm / 4.5 kg 19.9 x 16.7 x 8.3 Inches / 9.92 lbs
VESA Mounting Interface		100 mm x 100 mm 3.9 Inches x 3.9 Inches (For use with Specialty(Arm) Mounting hardware.)		
Environmental considerations	Operating	Temperature : 50°F – 104°F (10°C – 40°C) Humidity : 10 % – 80 %, non-condensing		
	Storage	Temperature : -4°F – 113°F (-20°C – 45°C) Humidity : 5 % – 95 %, non-condensing		
Plug-and-Play		This monitor can be installed and used with any Plug-and-Play compatible systems. Two-way data exchange between the monitor and PC system optimizes the monitor settings. Monitor installation takes place automatically. However, you can customize the installation settings if desired.		
Panel Dots (Pixels)		Due to the nature of the manufacturing of this product, approximately 1 pixel per million (1ppm) may be brighter or darker on the LCD panel. This does not affect product performance.		



## Specifications

Model Name		S22C450M	S22C450BW	S22C450MW
Panel	Size	21.5 Inches (54 cm)	22.0 Inches (55 cm)	22.0 Inches (55 cm)
	Display area	476.64 mm (H) x 268.11 mm (V) 18.8 Inches (H) x 10.6 Inches (V)	473.76 mm (H) x 296.1 mm (V) 18.7 Inches (H) x 11.7 Inches (V)	473.76 mm (H) x 296.1 mm (V) 18.7 Inches (H) x 11.7 Inches (V)
	Pixel Pitch	0.24825 mm (H) x 0.24825 mm (V) 0.010 Inches (H) x 0.010 Inches (V)	0.282 mm (H) x 0.282 mm (V) 0.011 Inches (H) x 0.011 Inches (V)	0.282 mm (H) x 0.282 mm (V) 0.011 Inches (H) x 0.011 Inches (V)
Synchronization	Horizontal Frequency	30 ~ 81 kHz		
	Vertical Frequency	56 ~ 75 Hz		
Display Color		16.7M		
Resolution	Optimum Resolution	1920x1080@60Hz	1680x1050@60Hz	
	Maximum Resolution	1920x1080@60Hz	1680x1050@60Hz	
Maximum Pixel Clock		148 MHz (Analog,Digital)	146 MHz (Analog,Digital)	
Power Supply		This product uses 100 to 240V. Refer to the label at the back of the product as the standard voltage can vary in different countries.		
Signal connectors		15pin-to-15pin D-sub cable, Detachable DVI-D to DVI-D connector, Detachable		



## Specifications

Model Name		S22C450M	S22C450BW	S22C450MW
Dimensions (W x H x D) / Weight	Without Stand	504.3 x 301.9 x 55.45 mm 19.9 x 11.9 x 2.2 Inches	502.4 x 329.8 x 55.5 mm 19.8 x 13.0 x 2.2 Inches	502.4 x 329.8 x 55.5 mm 19.8 x 13.0 x 2.2 Inches
	With Stand	MIN: 504.3 x 325.35 x 210 mm / 4.5 kg 19.9 x 12.8 x 8.3 Inches / 9.92 lbs MAX: 504.3 x 425.35 x 210 mm / 4.5 kg 19.9 x 16.7 x 8.3 Inches / 9.92 lbs	MIN: 502.4 x 353.5 x 210 mm / 5.0 kg 19.8 x 13.9 x 8.3 Inches / 11.02 lbs MAX: 502.4 x 453.5 x 210 mm / 5.0 kg 19.8 x 17.9 x 8.3 Inches / 11.02 lbs	MIN: 502.4 x 353.5 x 210 mm / 5.0 kg 19.8 x 13.9 x 8.3 Inches / 11.02 lbs MAX: 502.4 x 453.5 x 210 mm / 5.0 kg 19.8 x 17.9 x 8.3 Inches / 11.02 lbs
VESA Mounting Interface		100 mm x 100 mm 3.9 Inches x 3.9 Inches (For use with Specialty(Arm) Mounting hardware.)		
Environmental considerations	Operating	Temperature : 50°F – 104°F (10°C – 40°C) Humidity : 10 % – 80 %, non-condensing		
	Storage	Temperature : -4°F – 113°F (-20°C – 45°C) Humidity : 5 % – 95 %, non-condensing		
Plug-and-Play		This monitor can be installed and used with any Plug-and-Play compatible systems. Two-way data exchange between the monitor and PC system optimizes the monitor settings. Monitor installation takes place automatically. However, you can customize the installation settings if desired.		
Panel Dots (Pixels)		Due to the nature of the manufacturing of this product, approximately 1 pixel per million (1ppm) may be brighter or darker on the LCD panel. This does not affect product performance.		



# Specifications

Model Name		S23C450B	S23C450M	S24C450BL
Panel	Size	23 Inches (58 cm)	23 Inches (58 cm)	23.6 Inches (59 cm)
	Display area	509.76 mm (H) x 286.74 mm (V) 20.1 Inches (H) x 11.3 Inches (V)	509.76 mm (H) x 286.74 mm (V) 20.1 Inches (H) x 11.3 Inches (V)	521.28 mm (H) x 293.22 mm (V) 20.5 Inches (H) x 11.5 Inches (V)
	Pixel Pitch	0.2655 mm (H) x 0.2655 mm (V) 0.010 Inches (H) x 0.010 Inches (V)	0.2655 mm (H) x 0.2655 mm (V) 0.010 Inches (H) x 0.010 Inches (V)	0.2715 mm (H) x 0.2715 mm (V) 0.011 Inches (H) x 0.011 Inches (V)
Synchronization	Horizontal Frequency	30 ~ 81 kHz		
	Vertical Frequency	56 ~ 75 Hz		
Display Color		16.7M		
Resolution	Optimum Resolution	1920x1080@60Hz		
	Maximum Resolution	1920x1080@60Hz		
Maximum Pixel Clock		148 MHz (Analog,Digital)		
Power Supply		This product uses 100 to 240V. Refer to the label at the back of the product as the standard voltage can vary in different countries.		
Signal connectors		15pin-to-15pin D-sub cable, Detachable DVI-D to DVI-D connector, Detachable		
Dimensions (W x H x D) / Weight	Without Stand	542.9 x 321.4 x 55.4 mm 21.4 x 12.7 x 2.2 Inches	542.9 x 321.4 x 55.4 mm 21.4 x 12.7 x 2.2 Inches	554.6 x 330.5 x 55.45 mm 21.9 x 14.2 x 2.4 Inches
	With Stand	MIN: 542.9 x 344.65 x 224.0 mm / 4.6 kg 21.4 x 13.6 x 8.8 Inches / 10.14 lbs MAX: 542.9 x 474.65 x 224.0 mm / 4.6 kg 21.4 x 18.7 x 8.8 Inches / 10.14 lbs	MIN: 542.9 x 344.65 x 224.0 mm / 4.55 kg 21.4 x 13.6 x 8.8 Inches / 10.03 lbs MAX: 542.9 x 474.65 x 224.0 mm / 4.55 kg 21.4 x 18.7 x 8.8 Inches / 10.03 lbs	MIN: 554.6 x 352.35 x 224.0 mm / 5.4 kg 21.8 x 13.9 x 8.8 Inches / 11.90 lbs MAX: 554.6 x 482.35 x 224.0 mm / 5.4 kg 21.8 x 19.0 x 8.8 Inches / 11.90 lbs



## Specifications

Model Name		S23C450B	S23C450M	S24C450BL
VESA Mounting Interface		100 mm x 100 mm 3.9 Inches x 3.9 Inches (For use with Specialty(Arm) Mounting hardware.)		
Environmental considerations	Operating	Temperature : 50°F – 104°F (10°C – 40°C) Humidity : 10 % – 80 %, non-condensing		
	Storage	Temperature : -4°F – 113°F (-20°C – 45°C) Humidity : 5 % – 95 %, non-condensing		
Plug-and-Play		This monitor can be installed and used with any Plug-and-Play compatible systems. Two-way data exchange between the monitor and PC system optimizes the monitor settings. Monitor installation takes place automatically. However, you can customize the installation settings if desired.		
Panel Dots (Pixels)		Due to the nature of the manufacturing of this product, approximately 1 pixel per million (1ppm) may be brighter or darker on the LCD panel. This does not affect product performance.		



## Specifications

Model Name		S24C450B	S24C450M	S24C450BW
Panel	Size	24 Inches (61 cm)	24 Inches (61 cm)	24 Inches (61 cm)
	Display area	531.36 mm (H) x 298.89 mm (V) 20.9 Inches (H) x 11.8 Inches (V)	531.36 mm (H) x 298.89 mm (V) 20.9 Inches (H) x 11.8 Inches (V)	518.4 mm (H) x 324.0 mm (V) 20.4 Inches (H) x 12.8 Inches (V)
	Pixel Pitch	0.27675 mm (H) x 0.27675 mm (V) 0.011 Inches (H) x 0.011 Inches (V)	0.27675 mm (H) x 0.27675 mm (V) 0.011 Inches (H) x 0.011 Inches (V)	0.270 mm (H) x 0.270 mm (V) 0.011 Inches (H) x 0.011 Inches (V)
Synchronization	Horizontal Frequency	30 ~ 81 kHz		30 ~ 81 kHz
	Vertical Frequency	56 ~ 75 Hz		56 ~ 63 Hz
Display Color		16.7M		
Resolution	Optimum Resolution	1920x1080@60Hz		1920x1200@60Hz
	Maximum Resolution	1920x1080@60Hz		1920x1200@60Hz
Maximum Pixel Clock		148 MHz (Analog,Digital)		154 MHz (Analog,Digital)
Power Supply		This product uses 100 to 240V. Refer to the label at the back of the product as the standard voltage can vary in different countries.		
Signal connectors		15pin-to-15pin D-sub cable, Detachable DVI-D to DVI-D connector, Detachable		



## Specifications

Model Name		S24C450B	S24C450M	S24C450BW
Dimensions (W x H x D) / Weight	Without Stand	565.4 x 333.2 x 56.7 mm 22.3 x 13.1 x 2.2 Inches	565.4 x 333.2 x 56.7 mm 22.3 x 13.1 x 2.2 Inches	554.8 x 359.35 x 54.2 mm 21.8 x 14.1 x 2.1 Inches
	With Stand	MIN: 565.4 x 356.75 x 224.0 mm / 5.2 kg 22.3 x 14.0 x 8.8 Inches / 11.46 lbs MAX: 565.4 x 486.75 x 224.0 mm / 5.2 kg 22.3 x 19.2 x 8.8 Inches / 11.46 lbs	MIN: 565.4 x 356.75 x 224.0 mm / 5.2 kg 22.3 x 14.0 x 8.8 Inches / 11.46 lbs MAX: 565.4 x 486.75 x 224.0 mm / 5.2 kg 22.3 x 19.2 x 8.8 Inches / 11.46 lbs	MIN: 554.8 x 382.25 x 224.0 mm / 5.1 kg 21.8 x 15.1 x 8.8 Inches / 11.24 lbs MAX: 554.8 x 512.25 x 224.0 mm / 5.1 kg 21.8 x 20.2 x 8.8 Inches / 11.24 lbs
VESA Mounting Interface		100 mm x 100 mm 3.9 Inches x 3.9 Inches (For use with Specialty(Arm) Mounting hardware.)		
Environmental considerations	Operating	Temperature : 50°F – 104°F (10°C – 40°C) Humidity : 10 % – 80 %, non-condensing		
	Storage	Temperature : -4°F – 113°F (-20°C – 45°C) Humidity : 5 % – 95 %, non-condensing		
Plug-and-Play		This monitor can be installed and used with any Plug-and-Play compatible systems. Two-way data exchange between the monitor and PC system optimizes the monitor settings. Monitor installation takes place automatically. However, you can customize the installation settings if desired.		
Panel Dots (Pixels)		Due to the nature of the manufacturing of this product, approximately 1 pixel per million (1ppm) may be brighter or darker on the LCD panel. This does not affect product performance.		





# Specifications

Model Name		S24C450MW	S27C450B
Panel	Size	24 Inches (61 cm)	27.0 Inches (68 cm)
	Display area	518.4 mm (H) x 324.0 mm (V) 20.4 Inches (H) x 12.8 Inches (V)	597.6 mm (H) x 336.15 mm(V) 22.8 Inches (H) x 13.2 Inches (V)
	Pixel Pitch	0.270 mm (H) x 0.270 mm (V) 0.011 Inches (H) x 0.011 Inches (V)	0.31125 mm (H) x 0.31125 mm (V) 0.012 Inches (H) x 0.012 Inches (V)
Synchronization	Horizontal Frequency	30 ~ 81 kHz	30 ~ 81 kHz
	Vertical Frequency	56 ~ 63 Hz	56 ~ 75 Hz
Display Color		16.7M	
Resolution	Optimum Resolution	1920x1200@60Hz	1920x1080@60Hz
	Maximum Resolution	1920x1200@60Hz	1920x1080@60Hz
Maximum Pixel Clock		154 MHz (Analog,Digital)	148 MHz (Analog,Digital)
Power Supply		This product uses 100 to 240V. Refer to the label at the back of the product as the standard voltage can vary in different countries.	
Signal connectors		15pin-to-15pin D-sub cable, Detachable DVI-D to DVI-D connector, Detachable	
Dimensions (W x H x D) / Weight	Without Stand	554.8 x 359.35 x 54.2 mm 21.8 x 14.1 x 2.1 Inches	639 x 378.1 x 56.7 mm 25.2 x 14.9 x 2.2 Inches
	With Stand	MIN: 554.8 x 382.25 x 224.0 mm / 5.1 kg 21.8 x 15.1 x 8.8 Inches / 11.24 lbs MAX: 554.8 x 512.25 x 224.0 mm / 5.1 kg 21.8 x 20.2 x 8.8 Inches / 11.24 lbs	MIN: 639 x 397.8 x 224.0 mm / 6.2 kg 25.2 x 15.7 x 8.8 Inches / 13.67 lbs MAX: 639 x 527.8 x 224.0 mm / 6.2 kg 25.2 x 20.8 x 8.8 Inches / 13.67 lbs



## Specifications

Model Name		S24C450MW	S27C450B
VESA Mounting Interface		100 mm x 100 mm 3.9 Inches x 3.9 Inches (For use with Specialty(Arm) Mounting hardware.)	
Environmental considerations	Operating	Temperature : 50°F – 104°F (10°C – 40°C) Humidity : 10 % – 80 %, non-condensing	
	Storage	Temperature : -4°F – 113°F (-20°C – 45°C) Humidity : 5 % – 95 %, non-condensing	
Plug-and-Play		This monitor can be installed and used with any Plug-and-Play compatible systems. Two-way data exchange between the monitor and PC system optimizes the monitor settings. Monitor installation takes place automatically. However, you can customize the installation settings if desired.	
Panel Dots (Pixels)		Due to the nature of the manufacturing of this product, approximately 1 pixel per million (1ppm) may be brighter or darker on the LCD panel. This does not affect product performance.	



The above specifications are subject to change without notice to improve quality.



This device is a Class B digital apparatus.

(USA only)

Dispose unwanted electronics through an approved recycler.

To find the nearest recycling location, go to our website:

[www.samsung.com/recyclingdirect](http://www.samsung.com/recyclingdirect) or call, (877) 278 - 0799



# Specifications

## 10.2 PowerSaver

The power-saving function of this product reduces power consumption by switching off the screen and changing the color of the power LED if the product is not used for a specified period of time. The power is not turned off in power-saving mode. To switch the screen back on, press any key on the keyboard or move the mouse. Power-saving mode functions only when the product is connected to a PC that has a power-saving function.

PowerSaver	Normal operation mode	Energy Star Power Consumption	Power saving mode	Power off (Power button)
Power Indicator	On	On	Blinking	Off
Power Consumption (S19C450BW)	Typical 19 watts	15 W	Less than 0.1 watts	Less than 0.1 watts
Power Consumption (S19C450MW)	Typical 19 watts	15 W	Less than 0.1 watts	Less than 0.1 watts
Power Consumption (S19C450BR)	Typical 19 watts	16 W	Less than 0.1 watts	Less than 0.1 watts
Power Consumption (S19C450MR)	Typical 19 watts	16 W	Less than 0.1 watts	Less than 0.1 watts
Power Consumption (S20C450B)	Typical 19 watts	16 W	Less than 0.1 watts	Less than 0.1 watts
Power Consumption (S22C450B)	Typical 24 watts	21 W	Less than 0.1 watts	Less than 0.1 watts
Power Consumption (S22C450M)	Typical 24 watts	21 W	Less than 0.1 watts	Less than 0.1 watts
Power Consumption (S22C450BW)	Typical 24 watts	19 W	Less than 0.1 watts	Less than 0.1 watts
Power Consumption (S22C450MW)	Typical 24 watts	19 W	Less than 0.1 watts	Less than 0.1 watts



## Specifications

PowerSaver	Normal operation mode	Energy Star Power Consumption	Power saving mode	Power off (Power button)
Power Consumption (S23C450B)	Typical 25 watts	22 W	Less than 0.1watts	Less than 0.1watts
Power Consumption (S23C450M)	Typical 25 watts	22 W	Less than 0.1watts	Less than 0.1watts
Power Consumption (S24C450BL)	Typical 30 watts	22 W	Less than 0.1watts	Less than 0.1watts
Power Consumption (S24C450B)	Typical 30 watts	23 W	Less than 0.1watts	Less than 0.1watts
Power Consumption (S24C450M)	Typical 30 watts	23 W	Less than 0.1watts	Less than 0.1watts
Power Consumption (S24C450BW)	Typical 30 watts	25 W	Less than 0.1watts	Less than 0.1watts
Power Consumption (S24C450MW)	Typical 30 watts	25 W	Less than 0.1watts	Less than 0.1watts
Power Consumption (S27C450B)	Typical 36 watts	29 W	Less than 0.1watts	Less than 0.1watts



- The power consumption level can vary in different operating conditions or when settings are changed.(S\*\*C450\*\* Model Power saving mode / Power off (Power button) : Less than 0.1 watts (Analog Input Condition), Max 0.25watts )
- ENERGY STAR® is a US registered mark of the United States Environmental Protection Agency. Energy Star power is measured with the test method in the current Energy Star® Standard.
- To reduce the power consumption to 0 watts, turn off the power switch on the back of the product or disconnect the power cable. Be sure to disconnect the power cable when you will not be using the product for an extended period of time. To reduce the power consumption to 0 watts when the power switch is not available, disconnect the power cable.

## 10.3 Standard Signal Mode Table



- This product can be set to only one resolution for each screen size to obtain the optimum picture quality due to the nature of the panel. Therefore, a resolution other than the specified resolution may degrade the picture quality. To avoid this, it is recommended that you select the optimum resolution specified for the screen size of your product.
- Check the frequency when you exchange a CDT monitor (connected to a PC) for an LCD monitor. If the LCD monitor does not support 85Hz, change the vertical frequency to 60Hz using the CDT monitor before you exchange it with the LCD monitor.

If a signal that belongs to the following standard signal modes is transmitted from your PC, the screen will automatically be adjusted. If the signal transmitted from the PC does not belong to the standard signal modes, the screen may be blank even though the power LED turns on. In such a case, change the settings according to the following table by referring to the graphics card user manual.

S19C450BW

Resolution	Horizontal Frequency (kHz)	Vertical Frequency (Hz)	Pixel Clock (MHz)	Sync Polarity (H/V)
IBM, 720 x 400	31.469	70.087	28.322	-/+
MAC, 640 x 480	35.000	66.667	30.240	-/-
MAC, 832 x 624	49.726	74.551	57.284	-/-
MAC, 1152 x 870	68.681	75.062	100.000	-/-
VESA, 640 x 480	31.469	59.940	25.175	-/-
VESA, 640 x 480	37.861	72.809	31.500	-/-
VESA, 640 x 480	37.500	75.000	31.500	-/-
VESA, 800 x 600	35.156	56.250	36.000	+/+
VESA, 800 x 600	37.879	60.317	40.000	+/+
VESA, 800 x 600	48.077	72.188	50.000	+/+
VESA, 800 x 600	46.875	75.000	49.500	+/+
VESA, 1024 x 768	48.363	60.004	65.000	-/-
VESA, 1024 x 768	56.476	70.069	75.000	-/-
VESA, 1024 x 768	60.023	75.029	78.750	+/+
VESA, 1152 x 864	67.500	75.000	108.000	+/+
VESA, 1280 x 720	45.000	60.000	74.250	+/+
VESA, 1280 x 800	49.702	59.810	83.500	-/+



## Specifications

Resolution	Horizontal Frequency (kHz)	Vertical Frequency (Hz)	Pixel Clock (MHz)	Sync Polarity (H/V)
VESA, 1440 x 900	55.935	59.887	106.500	-/+
VESA, 1440 x 900	70.635	74.984	136.750	-/+



## Specifications

S19C450MW

Resolution	Horizontal Frequency (kHz)	Vertical Frequency (Hz)	Pixel Clock (MHz)	Sync Polarity (H/V)
IBM, 720 x 400	31.469	70.087	28.322	-/+
MAC, 640 x 480	35.000	66.667	30.240	-/-
MAC, 832 x 624	49.726	74.551	57.284	-/-
MAC, 1152 x 870	68.681	75.062	100.000	-/-
VESA, 640 x 480	31.469	59.940	25.175	-/-
VESA, 640 x 480	37.861	72.809	31.500	-/-
VESA, 640 x 480	37.500	75.000	31.500	-/-
VESA, 800 x 600	35.156	56.250	36.000	+/+
VESA, 800 x 600	37.879	60.317	40.000	+/+
VESA, 800 x 600	48.077	72.188	50.000	+/+
VESA, 800 x 600	46.875	75.000	49.500	+/+
VESA, 1024 x 768	48.363	60.004	65.000	-/-
VESA, 1024 x 768	56.476	70.069	75.000	-/-
VESA, 1024 x 768	60.023	75.029	78.750	+/+
VESA, 1152 x 864	67.500	75.000	108.000	+/+
VESA, 1280 x 720	45.000	60.000	74.250	+/+
VESA, 1280 x 800	49.702	59.810	83.500	-/+
VESA, 1440 x 900	55.935	59.887	106.500	-/+
VESA, 1440 x 900	70.635	74.984	136.750	-/+



# Specifications

S19C450BR

Resolution	Horizontal Frequency (kHz)	Vertical Frequency (Hz)	Pixel Clock (MHz)	Sync Polarity (H/V)
IBM, 720 x 400	31.469	70.087	28.322	-/+
MAC, 640 x 480	35.000	66.667	30.240	-/-
MAC, 832 x 624	49.726	74.551	57.284	-/-
MAC, 1152 x 870	68.681	75.062	100.000	-/-
VESA, 640 x 480	31.469	59.940	25.175	-/-
VESA, 640 x 480	37.861	72.809	31.500	-/-
VESA, 640 x 480	37.500	75.000	31.500	-/-
VESA, 800 x 600	35.156	56.250	36.000	+/+
VESA, 800 x 600	37.879	60.317	40.000	+/+
VESA, 800 x 600	48.077	72.188	50.000	+/+
VESA, 800 x 600	46.875	75.000	49.500	+/+
VESA, 1024 x 768	48.363	60.004	65.000	-/-
VESA, 1024 x 768	56.476	70.069	75.000	-/-
VESA, 1024 x 768	60.023	75.029	78.750	+/+
VESA, 1152 x 864	67.500	75.000	108.000	+/+
VESA, 1280 x 720	45.000	60.000	74.250	+/+
VESA, 1280 x 800	49.702	59.810	83.500	-/+
VESA, 1280 x 960	60.000	60.000	108.000	+/+
VESA, 1280 x 1024	63.981	60.020	108.000	+/+
VESA, 1280 x 1024	79.976	75.025	135.000	+/+





# Specifications

S19C450MR

Resolution	Horizontal Frequency (kHz)	Vertical Frequency (Hz)	Pixel Clock (MHz)	Sync Polarity (H/V)
IBM, 720 x 400	31.469	70.087	28.322	-/+
MAC, 640 x 480	35.000	66.667	30.240	-/-
MAC, 832 x 624	49.726	74.551	57.284	-/-
MAC, 1152 x 870	68.681	75.062	100.000	-/-
VESA, 640 x 480	31.469	59.940	25.175	-/-
VESA, 640 x 480	37.861	72.809	31.500	-/-
VESA, 640 x 480	37.500	75.000	31.500	-/-
VESA, 800 x 600	35.156	56.250	36.000	+/+
VESA, 800 x 600	37.879	60.317	40.000	+/+
VESA, 800 x 600	48.077	72.188	50.000	+/+
VESA, 800 x 600	46.875	75.000	49.500	+/+
VESA, 1024 x 768	48.363	60.004	65.000	-/-
VESA, 1024 x 768	56.476	70.069	75.000	-/-
VESA, 1024 x 768	60.023	75.029	78.750	+/+
VESA, 1152 x 864	67.500	75.000	108.000	+/+
VESA, 1280 x 720	45.000	60.000	74.250	+/+
VESA, 1280 x 800	49.702	59.810	83.500	-/+
VESA, 1280 x 960	60.000	60.000	108.000	+/+
VESA, 1280 x 1024	63.981	60.020	108.000	+/+
VESA, 1280 x 1024	79.976	75.025	135.000	+/+



## Specifications

S20C450B

Resolution	Horizontal Frequency (kHz)	Vertical Frequency (Hz)	Pixel Clock (MHz)	Sync Polarity (H/V)
IBM, 720 x 400	31.469	70.087	28.322	-/+
MAC, 640 x 480	35.000	66.667	30.240	-/-
MAC, 832 x 624	49.726	74.551	57.284	-/-
MAC, 1152 x 870	68.681	75.062	100.000	-/-
VESA, 640 x 480	31.469	59.940	25.175	-/-
VESA, 640 x 480	37.861	72.809	31.500	-/-
VESA, 640 x 480	37.500	75.000	31.500	-/-
VESA, 800 x 600	35.156	56.250	36.000	+/+
VESA, 800 x 600	37.879	60.317	40.000	+/+
VESA, 800 x 600	48.077	72.188	50.000	+/+
VESA, 800 x 600	46.875	75.000	49.500	+/+
VESA, 1024 x 768	48.363	60.004	65.000	-/-
VESA, 1024 x 768	56.476	70.069	75.000	-/-
VESA, 1024 x 768	60.023	75.029	78.750	+/+
VESA, 1152 x 864	67.500	75.000	108.000	+/+
VESA, 1280 x 720	45.000	60.000	74.250	+/+
VESA, 1280 x 800	49.702	59.810	83.500	-/+
VESA, 1440 x 900	55.935	59.887	106.500	-/+
VESA, 1440 x 900	70.635	74.984	136.750	-/+
VESA, 1600 x 900	60.000	60.000	108.000	+/+



# Specifications

S22C450B

Resolution	Horizontal Frequency (kHz)	Vertical Frequency (Hz)	Pixel Clock (MHz)	Sync Polarity (H/V)
IBM, 720 x 400	31.469	70.087	28.322	-/+
MAC, 640 x 480	35.000	66.667	30.240	-/-
MAC, 832 x 624	49.726	74.551	57.284	-/-
MAC, 1152 x 870	68.681	75.062	100.000	-/-
VESA, 640 x 480	31.469	59.940	25.175	-/-
VESA, 640 x 480	37.861	72.809	31.500	-/-
VESA, 640 x 480	37.500	75.000	31.500	-/-
VESA, 800 x 600	35.156	56.250	36.000	+/+
VESA, 800 x 600	37.879	60.317	40.000	+/+
VESA, 800 x 600	48.077	72.188	50.000	+/+
VESA, 800 x 600	46.875	75.000	49.500	+/+
VESA, 1024 x 768	48.363	60.004	65.000	-/-
VESA, 1024 x 768	56.476	70.069	75.000	-/-
VESA, 1024 x 768	60.023	75.029	78.750	+/+
VESA, 1152 x 864	67.500	75.000	108.000	+/+
VESA, 1280 x 720	45.000	60.000	74.250	+/+
VESA, 1280 x 800	49.702	59.810	83.500	-/+
VESA, 1280 x 1024	63.981	60.020	108.000	+/+
VESA, 1280 x 1024	79.976	75.025	135.000	+/+
VESA, 1440 x 900	55.935	59.887	106.500	-/+
VESA, 1600 x 900	60.000	60.000	108.000	+/+
VESA, 1680 x 1050	65.290	59.954	146.250	-/+
VESA, 1920 x 1080	67.500	60.000	148.500	+/+



# Specifications

S22C450M

Resolution	Horizontal Frequency (kHz)	Vertical Frequency (Hz)	Pixel Clock (MHz)	Sync Polarity (H/V)
IBM, 720 x 400	31.469	70.087	28.322	-/+
MAC, 640 x 480	35.000	66.667	30.240	-/-
MAC, 832 x 624	49.726	74.551	57.284	-/-
MAC, 1152 x 870	68.681	75.062	100.000	-/-
VESA, 640 x 480	31.469	59.940	25.175	-/-
VESA, 640 x 480	37.861	72.809	31.500	-/-
VESA, 640 x 480	37.500	75.000	31.500	-/-
VESA, 800 x 600	35.156	56.250	36.000	+/+
VESA, 800 x 600	37.879	60.317	40.000	+/+
VESA, 800 x 600	48.077	72.188	50.000	+/+
VESA, 800 x 600	46.875	75.000	49.500	+/+
VESA, 1024 x 768	48.363	60.004	65.000	-/-
VESA, 1024 x 768	56.476	70.069	75.000	-/-
VESA, 1024 x 768	60.023	75.029	78.750	+/+
VESA, 1152 x 864	67.500	75.000	108.000	+/+
VESA, 1280 x 720	45.000	60.000	74.250	+/+
VESA, 1280 x 800	49.702	59.810	83.500	-/+
VESA, 1280 x 1024	63.981	60.020	108.000	+/+
VESA, 1280 x 1024	79.976	75.025	135.000	+/+
VESA, 1440 x 900	55.935	59.887	106.500	-/+
VESA, 1600 x 900	60.000	60.000	108.000	+/+
VESA, 1680 x 1050	65.290	59.954	146.250	-/+
VESA, 1920 x 1080	67.500	60.000	148.500	+/+



# Specifications

S22C450BW

Resolution	Horizontal Frequency (kHz)	Vertical Frequency (Hz)	Pixel Clock (MHz)	Sync Polarity (H/V)
IBM, 720 x 400	31.469	70.087	28.322	-/+
MAC, 640 x 480	35.000	66.667	30.240	-/-
MAC, 832 x 624	49.726	74.551	57.284	-/-
MAC, 1152 x 870	68.681	75.062	100.000	-/-
VESA, 640 x 480	31.469	59.940	25.175	-/-
VESA, 640 x 480	37.861	72.809	31.500	-/-
VESA, 640 x 480	37.500	75.000	31.500	-/-
VESA, 800 x 600	35.156	56.250	36.000	+/+
VESA, 800 x 600	37.879	60.317	40.000	+/+
VESA, 800 x 600	48.077	72.188	50.000	+/+
VESA, 800 x 600	46.875	75.000	49.500	+/+
VESA, 1024 x 768	48.363	60.004	65.000	-/-
VESA, 1024 x 768	56.476	70.069	75.000	-/-
VESA, 1024 x 768	60.023	75.029	78.750	+/+
VESA, 1152 x 864	67.500	75.000	108.000	+/+
VESA, 1280 x 720	45.000	60.000	74.250	+/+
VESA, 1280 x 800	49.702	59.810	83.500	-/+
VESA, 1280 x 1024	63.981	60.020	108.000	+/+
VESA, 1280 x 1024	79.976	75.025	135.000	+/+
VESA, 1440 x 900	55.935	59.887	106.500	-/+
VESA, 1600 x 900	60.000	60.000	108.000	+/+
VESA, 1680 x 1050	65.290	59.954	146.250	-/+



## Specifications

S22C450MW

Resolution	Horizontal Frequency (kHz)	Vertical Frequency (Hz)	Pixel Clock (MHz)	Sync Polarity (H/V)
IBM, 720 x 400	31.469	70.087	28.322	-/+
MAC, 640 x 480	35.000	66.667	30.240	-/-
MAC, 832 x 624	49.726	74.551	57.284	-/-
MAC, 1152 x 870	68.681	75.062	100.000	-/-
VESA, 640 x 480	31.469	59.940	25.175	-/-
VESA, 640 x 480	37.861	72.809	31.500	-/-
VESA, 640 x 480	37.500	75.000	31.500	-/-
VESA, 800 x 600	35.156	56.250	36.000	+/+
VESA, 800 x 600	37.879	60.317	40.000	+/+
VESA, 800 x 600	48.077	72.188	50.000	+/+
VESA, 800 x 600	46.875	75.000	49.500	+/+
VESA, 1024 x 768	48.363	60.004	65.000	-/-
VESA, 1024 x 768	56.476	70.069	75.000	-/-
VESA, 1024 x 768	60.023	75.029	78.750	+/+
VESA, 1152 x 864	67.500	75.000	108.000	+/+
VESA, 1280 x 720	45.000	60.000	74.250	+/+
VESA, 1280 x 800	49.702	59.810	83.500	-/+
VESA, 1280 x 1024	63.981	60.020	108.000	+/+
VESA, 1280 x 1024	79.976	75.025	135.000	+/+
VESA, 1440 x 900	55.935	59.887	106.500	-/+
VESA, 1600 x 900	60.000	60.000	108.000	+/+
VESA, 1680 x 1050	65.290	59.954	146.250	-/+



# Specifications

S23C450B

Resolution	Horizontal Frequency (kHz)	Vertical Frequency (Hz)	Pixel Clock (MHz)	Sync Polarity (H/V)
IBM, 720 x 400	31.469	70.087	28.322	-/+
MAC, 640 x 480	35.000	66.667	30.240	-/-
MAC, 832 x 624	49.726	74.551	57.284	-/-
MAC, 1152 x 870	68.681	75.062	100.000	-/-
VESA, 640 x 480	31.469	59.940	25.175	-/-
VESA, 640 x 480	37.861	72.809	31.500	-/-
VESA, 640 x 480	37.500	75.000	31.500	-/-
VESA, 800 x 600	35.156	56.250	36.000	+/+
VESA, 800 x 600	37.879	60.317	40.000	+/+
VESA, 800 x 600	48.077	72.188	50.000	+/+
VESA, 800 x 600	46.875	75.000	49.500	+/+
VESA, 1024 x 768	48.363	60.004	65.000	-/-
VESA, 1024 x 768	56.476	70.069	75.000	-/-
VESA, 1024 x 768	60.023	75.029	78.750	+/+
VESA, 1152 x 864	67.500	75.000	108.000	+/+
VESA, 1280 x 720	45.000	60.000	74.250	+/+
VESA, 1280 x 800	49.702	59.810	83.500	-/+
VESA, 1280 x 1024	63.981	60.020	108.000	+/+
VESA, 1280 x 1024	79.976	75.025	135.000	+/+
VESA, 1440 x 900	55.935	59.887	106.500	-/+
VESA, 1600 x 900	60.000	60.000	108.000	+/+
VESA, 1680 x 1050	65.290	59.954	146.250	-/+
VESA, 1920 x 1080	67.500	60.000	148.500	+/+



## Specifications

S23C450M

Resolution	Horizontal Frequency (kHz)	Vertical Frequency (Hz)	Pixel Clock (MHz)	Sync Polarity (H/V)
IBM, 720 x 400	31.469	70.087	28.322	-/+
MAC, 640 x 480	35.000	66.667	30.240	-/-
MAC, 832 x 624	49.726	74.551	57.284	-/-
MAC, 1152 x 870	68.681	75.062	100.000	-/-
VESA, 640 x 480	31.469	59.940	25.175	-/-
VESA, 640 x 480	37.861	72.809	31.500	-/-
VESA, 640 x 480	37.500	75.000	31.500	-/-
VESA, 800 x 600	35.156	56.250	36.000	+/+
VESA, 800 x 600	37.879	60.317	40.000	+/+
VESA, 800 x 600	48.077	72.188	50.000	+/+
VESA, 800 x 600	46.875	75.000	49.500	+/+
VESA, 1024 x 768	48.363	60.004	65.000	-/-
VESA, 1024 x 768	56.476	70.069	75.000	-/-
VESA, 1024 x 768	60.023	75.029	78.750	+/+
VESA, 1152 x 864	67.500	75.000	108.000	+/+
VESA, 1280 x 720	45.000	60.000	74.250	+/+
VESA, 1280 x 800	49.702	59.810	83.500	-/+
VESA, 1280 x 1024	63.981	60.020	108.000	+/+
VESA, 1280 x 1024	79.976	75.025	135.000	+/+
VESA, 1440 x 900	55.935	59.887	106.500	-/+
VESA, 1600 x 900	60.000	60.000	108.000	+/+
VESA, 1680 x 1050	65.290	59.954	146.250	-/+
VESA, 1920 x 1080	67.500	60.000	148.500	+/+





## Specifications

S24C450BL

Resolution	Horizontal Frequency (kHz)	Vertical Frequency (Hz)	Pixel Clock (MHz)	Sync Polarity (H/V)
IBM, 720 x 400	31.469	70.087	28.322	-/+
MAC, 640 x 480	35.000	66.667	30.240	-/-
MAC, 832 x 624	49.726	74.551	57.284	-/-
MAC, 1152 x 870	68.681	75.062	100.000	-/-
VESA, 640 x 480	31.469	59.940	25.175	-/-
VESA, 640 x 480	37.861	72.809	31.500	-/-
VESA, 640 x 480	37.500	75.000	31.500	-/-
VESA, 800 x 600	35.156	56.250	36.000	+/+
VESA, 800 x 600	37.879	60.317	40.000	+/+
VESA, 800 x 600	48.077	72.188	50.000	+/+
VESA, 800 x 600	46.875	75.000	49.500	+/+
VESA, 1024 x 768	48.363	60.004	65.000	-/-
VESA, 1024 x 768	56.476	70.069	75.000	-/-
VESA, 1024 x 768	60.023	75.029	78.750	+/+
VESA, 1152 x 864	67.500	75.000	108.000	+/+
VESA, 1280 x 720	45.000	60.000	74.250	+/+
VESA, 1280 x 800	49.702	59.810	83.500	-/+
VESA, 1280 x 1024	63.981	60.020	108.000	+/+
VESA, 1280 x 1024	79.976	75.025	135.000	+/+
VESA, 1440 x 900	55.935	59.887	106.500	-/+
VESA, 1600 x 900	60.000	60.000	108.000	+/+
VESA, 1680 x 1050	65.290	59.954	146.250	-/+
VESA, 1920 x 1080	67.500	60.000	148.500	+/+



## Specifications

S24C450B

Resolution	Horizontal Frequency (kHz)	Vertical Frequency (Hz)	Pixel Clock (MHz)	Sync Polarity (H/V)
IBM, 720 x 400	31.469	70.087	28.322	-/+
MAC, 640 x 480	35.000	66.667	30.240	-/-
MAC, 832 x 624	49.726	74.551	57.284	-/-
MAC, 1152 x 870	68.681	75.062	100.000	-/-
VESA, 640 x 480	31.469	59.940	25.175	-/-
VESA, 640 x 480	37.861	72.809	31.500	-/-
VESA, 640 x 480	37.500	75.000	31.500	-/-
VESA, 800 x 600	35.156	56.250	36.000	+/+
VESA, 800 x 600	37.879	60.317	40.000	+/+
VESA, 800 x 600	48.077	72.188	50.000	+/+
VESA, 800 x 600	46.875	75.000	49.500	+/+
VESA, 1024 x 768	48.363	60.004	65.000	-/-
VESA, 1024 x 768	56.476	70.069	75.000	-/-
VESA, 1024 x 768	60.023	75.029	78.750	+/+
VESA, 1152 x 864	67.500	75.000	108.000	+/+
VESA, 1280 x 720	45.000	60.000	74.250	+/+
VESA, 1280 x 800	49.702	59.810	83.500	-/+
VESA, 1280 x 1024	63.981	60.020	108.000	+/+
VESA, 1280 x 1024	79.976	75.025	135.000	+/+
VESA, 1440 x 900	55.935	59.887	106.500	-/+
VESA, 1600 x 900	60.000	60.000	108.000	+/+
VESA, 1680 x 1050	65.290	59.954	146.250	-/+
VESA, 1920 x 1080	67.500	60.000	148.500	+/+



## Specifications

S24C450M

Resolution	Horizontal Frequency (kHz)	Vertical Frequency (Hz)	Pixel Clock (MHz)	Sync Polarity (H/V)
IBM, 720 x 400	31.469	70.087	28.322	-/+
MAC, 640 x 480	35.000	66.667	30.240	-/-
MAC, 832 x 624	49.726	74.551	57.284	-/-
MAC, 1152 x 870	68.681	75.062	100.000	-/-
VESA, 640 x 480	31.469	59.940	25.175	-/-
VESA, 640 x 480	37.861	72.809	31.500	-/-
VESA, 640 x 480	37.500	75.000	31.500	-/-
VESA, 800 x 600	35.156	56.250	36.000	+/+
VESA, 800 x 600	37.879	60.317	40.000	+/+
VESA, 800 x 600	48.077	72.188	50.000	+/+
VESA, 800 x 600	46.875	75.000	49.500	+/+
VESA, 1024 x 768	48.363	60.004	65.000	-/-
VESA, 1024 x 768	56.476	70.069	75.000	-/-
VESA, 1024 x 768	60.023	75.029	78.750	+/+
VESA, 1152 x 864	67.500	75.000	108.000	+/+
VESA, 1280 x 720	45.000	60.000	74.250	+/+
VESA, 1280 x 800	49.702	59.810	83.500	-/+
VESA, 1280 x 1024	63.981	60.020	108.000	+/+
VESA, 1280 x 1024	79.976	75.025	135.000	+/+
VESA, 1440 x 900	55.935	59.887	106.500	-/+
VESA, 1600 x 900	60.000	60.000	108.000	+/+
VESA, 1680 x 1050	65.290	59.954	146.250	-/+
VESA, 1920 x 1080	67.500	60.000	148.500	+/+



# Specifications

S24C450BW

Resolution	Horizontal Frequency (kHz)	Vertical Frequency (Hz)	Pixel Clock (MHz)	Sync Polarity (H/V)
VESA, 640 x 480	31.469	59.940	25.175	-/-
VESA, 800 x 600	35.156	56.250	36.000	+/+
VESA, 800 x 600	37.879	60.317	40.000	+/+
VESA, 1024 x 768	48.363	60.004	65.000	-/-
VESA, 1280 x 720	45.000	60.000	74.250	+/+
VESA, 1280 x 800	49.702	59.810	83.500	-/+
VESA, 1280 x 1024	63.981	60.020	108.000	+/+
VESA, 1440 x 900	55.935	59.887	106.500	-/+
VESA, 1600 x 900	60.000	60.000	108.000	+/+
VESA, 1680 x 1050	65.290	59.954	146.250	-/+
VESA, 1920 x 1080	67.500	60.000	148.500	+/+
VESA, 1920 x 1200	74.038	59.950	154.000	+/-



## Specifications

S24C450MW

Resolution	Horizontal Frequency (kHz)	Vertical Frequency (Hz)	Pixel Clock (MHz)	Sync Polarity (H/V)
VESA, 640 x 480	31.469	59.940	25.175	-/-
VESA, 800 x 600	35.156	56.250	36.000	+/+
VESA, 800 x 600	37.879	60.317	40.000	+/+
VESA, 1024 x 768	48.363	60.004	65.000	-/-
VESA, 1280 x 720	45.000	60.000	74.250	+/+
VESA, 1280 x 800	49.702	59.810	83.500	-/+
VESA, 1280 x 1024	63.981	60.020	108.000	+/+
VESA, 1440 x 900	55.935	59.887	106.500	-/+
VESA, 1600 x 900	60.000	60.000	108.000	+/+
VESA, 1680 x 1050	65.290	59.954	146.250	-/+
VESA, 1920 x 1080	67.500	60.000	148.500	+/+
VESA, 1920 x 1200	74.038	59.950	154.000	+/-



## Specifications

S27C450B

Resolution	Horizontal Frequency (kHz)	Vertical Frequency (Hz)	Pixel Clock (MHz)	Sync Polarity (H/V)
IBM, 720 x 400	31.469	70.087	28.322	-/+
MAC, 640 x 480	35.000	66.667	30.240	-/-
MAC, 832 x 624	49.726	74.551	57.284	-/-
MAC, 1152 x 870	68.681	75.062	100.000	-/-
VESA, 640 x 480	31.469	59.940	25.175	-/-
VESA, 640 x 480	37.861	72.809	31.500	-/-
VESA, 640 x 480	37.500	75.000	31.500	-/-
VESA, 800 x 600	35.156	56.250	36.000	+/+
VESA, 800 x 600	37.879	60.317	40.000	+/+
VESA, 800 x 600	48.077	72.188	50.000	+/+
VESA, 800 x 600	46.875	75.000	49.500	+/+
VESA, 1024 x 768	48.363	60.004	65.000	-/-
VESA, 1024 x 768	56.476	70.069	75.000	-/-
VESA, 1024 x 768	60.023	75.029	78.750	+/+
VESA, 1152 x 864	67.500	75.000	108.000	+/+
VESA, 1280 x 720	45.000	60.000	74.250	+/+
VESA, 1280 x 800	49.702	59.810	83.500	-/+
VESA, 1280 x 1024	63.981	60.020	108.000	+/+
VESA, 1280 x 1024	79.976	75.025	135.000	+/+
VESA, 1440 x 900	55.935	59.887	106.500	-/+
VESA, 1600 x 900	60.000	60.000	108.000	+/+
VESA, 1680 x 1050	65.290	59.954	146.250	-/+
VESA, 1920 x 1080	67.500	60.000	148.500	+/+



- Horizontal Frequency

The time required to scan a single line from the left to the right side of the screen is called a horizontal cycle. The reciprocal number of a horizontal cycle is called horizontal frequency. Horizontal frequency is measured in kHz.

- Vertical Frequency

Repeating the same picture dozens of times per second allows you to view natural pictures. The repeat frequency is called "vertical frequency" or "refresh rate" and is indicated in Hz.

## Contact SAMSUNG WORLD WIDE



If you have any questions or comments relating to Samsung products, please contact the SAMSUNG customer care center.

NORTH AMERICA		
U.S.A	1-800-SAMSUNG (726-7864)	<a href="http://www.samsung.com">http://www.samsung.com</a>
CANADA	1-800-SAMSUNG (726-7864)	<a href="http://www.samsung.com/ca">http://www.samsung.com/ca</a> (English) <a href="http://www.samsung.com/ca_fr">http://www.samsung.com/ca_fr</a> (French)
MEXICO	01-800-SAMSUNG (726-7864)	<a href="http://www.samsung.com">http://www.samsung.com</a>
LATIN AMERICA		
ARGENTINE	0800-333-3733	<a href="http://www.samsung.com">http://www.samsung.com</a>
BOLIVIA	800-10-7260	<a href="http://www.samsung.com">http://www.samsung.com</a>
BRAZIL	0800-124-421 4004-0000	<a href="http://www.samsung.com">http://www.samsung.com</a>
CHILE	800-SAMSUNG (726-7864) From mobile 02-24 82 82 00	<a href="http://www.samsung.com/cl">http://www.samsung.com/cl</a>
COLOMBIA	01-8000 112 112 Bogotá: 6001272	<a href="http://www.samsung.com/co">http://www.samsung.com/co</a>
COSTA RICA	0-800-507-7267	<a href="http://www.samsung.com/latin">http://www.samsung.com/latin</a> (Spanish) <a href="http://www.samsung.com/latin_en">http://www.samsung.com/latin_en</a> (English)
DOMINICA	1-800-751-2676	<a href="http://www.samsung.com/latin">http://www.samsung.com/latin</a> (Spanish) <a href="http://www.samsung.com/latin_en">http://www.samsung.com/latin_en</a> (English)
ECUADOR	1-800-10-7267	<a href="http://www.samsung.com/latin">http://www.samsung.com/latin</a> (Spanish) <a href="http://www.samsung.com/latin_en">http://www.samsung.com/latin_en</a> (English)
EL SALVADOR	800-6225	<a href="http://www.samsung.com/latin">http://www.samsung.com/latin</a> (Spanish) <a href="http://www.samsung.com/latin_en">http://www.samsung.com/latin_en</a> (English)

LATIN AMERICA		
GUATEMALA	1-800-299-0013	<a href="http://www.samsung.com/latin">http://www.samsung.com/latin</a> (Spanish) <a href="http://www.samsung.com/latin_en">http://www.samsung.com/latin_en</a> (English)
HONDURAS	800-27919267	<a href="http://www.samsung.com/latin">http://www.samsung.com/latin</a> (Spanish) <a href="http://www.samsung.com/latin_en">http://www.samsung.com/latin_en</a> (English)
JAMAICA	1-800-234-7267	<a href="http://www.samsung.com">http://www.samsung.com</a>
NICARAGUA	00-1800-5077267	<a href="http://www.samsung.com/latin">http://www.samsung.com/latin</a> (Spanish) <a href="http://www.samsung.com/latin_en">http://www.samsung.com/latin_en</a> (English)
PANAMA	800-7267	<a href="http://www.samsung.com/latin">http://www.samsung.com/latin</a> (Spanish) <a href="http://www.samsung.com/latin_en">http://www.samsung.com/latin_en</a> (English)
PARAGUAY	98005420001	<a href="http://www.samsung.com">http://www.samsung.com</a>
PERU	0-800-777-08 (Only from landline) 336-8686 (From HHP & landline)	<a href="http://www.samsung.com">http://www.samsung.com</a>
PUERTO RICO	1-800-682-3180	<a href="http://www.samsung.com">http://www.samsung.com</a>
TRINIDAD & TOBAGO	1-800-SAMSUNG (726-7864)	<a href="http://www.samsung.com">http://www.samsung.com</a>
URUGUAY	40543733	<a href="http://www.samsung.com">http://www.samsung.com</a>
VENEZUELA	0-800-100-5303	<a href="http://www.samsung.com">http://www.samsung.com</a>

EUROPE		
AUSTRIA	0810 - SAMSUNG (7267864, € 0.07/min)	<a href="http://www.samsung.com">http://www.samsung.com</a>
BELGIUM	02-201-24-18	<a href="http://www.samsung.com/be">http://www.samsung.com/be</a> (Dutch) <a href="http://www.samsung.com/be_fr">http://www.samsung.com/be_fr</a> (French)
BOSNIA	051 133 1999	<a href="http://www.samsung.com">http://www.samsung.com</a>
BULGARIA	07001 33 11 , normal tariff	<a href="http://www.samsung.com">http://www.samsung.com</a>
CROATIA	062 SAMSUNG (062 726 786)	<a href="http://www.samsung.com">http://www.samsung.com</a>



EUROPE		
CYPRUS	8009 4000 only from landline (+30) 210 6897691 from mobile and land line	<a href="http://www.samsung.com">http://www.samsung.com</a>
CZECH	800 - SAMSUNG (800-726786)  Samsung Electronics Czech and Slovak, s.r.o., Oasis Florenc, Sokolovská 394/17, 180 00, Praha 8 till 8.2.2013 . From 8.2.2013: Samsung Electronics Czech and Slovak, s.r.o. V Parku 2343/24, 148 00 - Praha 4	<a href="http://www.samsung.com">http://www.samsung.com</a>
DENMARK	70 70 19 70	<a href="http://www.samsung.com">http://www.samsung.com</a>
EIRE	0818 717100	<a href="http://www.samsung.com">http://www.samsung.com</a>
ESTONIA	800-7267	<a href="http://www.samsung.com/ee">http://www.samsung.com/ee</a>
FINLAND	030-6227 515	<a href="http://www.samsung.com">http://www.samsung.com</a>
FRANCE	01 48 63 00 00	<a href="http://www.samsung.com/fr">http://www.samsung.com/fr</a>
GERMANY	0180 5 SAMSUNG bzw. 0180 5 7267864* (*0,14 €/Min. aus dem dt. Festnetz, aus dem Mobilfunk max. 0,42 €/Min.)	<a href="http://www.samsung.com">http://www.samsung.com</a>
GREECE	80111-SAMSUNG (80111 726 7864) only from land line (+30) 210 6897691 from mobile and land line	<a href="http://www.samsung.com">http://www.samsung.com</a>
HUNGARY	06-80-SAMSUNG (726-7864)	<a href="http://www.samsung.com">http://www.samsung.com</a>
ITALIA	800-SAMSUNG (726-7864)	<a href="http://www.samsung.com">http://www.samsung.com</a>
LATVIA	8000-7267	<a href="http://www.samsung.com/lv">http://www.samsung.com/lv</a>
LITHUANIA	8-800-77777	<a href="http://www.samsung.com/lt">http://www.samsung.com/lt</a>
LUXEMBURG	261 03 710	<a href="http://www.samsung.com">http://www.samsung.com</a>
MONTENEGRO	020 405 888	<a href="http://www.samsung.com">http://www.samsung.com</a>
NETHERLANDS	0900 - SAMSUNG (0900-7267864) (€ 0,10/Min)	<a href="http://www.samsung.com">http://www.samsung.com</a>
NORWAY	815 56480	<a href="http://www.samsung.com">http://www.samsung.com</a>
POLAND	0 801-1SAMSUNG(172-678) * lub +48 22 607-93-33 ** * (całkowity koszt połączenia jak za 1 impuls według taryfy operatora) ** (koszt połączenia według taryfy operatora)	<a href="http://www.samsung.com/pl">http://www.samsung.com/pl</a>

## Appendix

EUROPE		
PORTUGAL	808 20 - SAMSUNG (808 20 7267)	<a href="http://www.samsung.com">http://www.samsung.com</a>
ROMANIA	08008 SAMSUNG (08008 726 7864) TOLL FREE No.	<a href="http://www.samsung.com">http://www.samsung.com</a>
SERBIA	+381 11 321 6899 (old number still active 0700 7267864)	<a href="http://www.samsung.com">http://www.samsung.com</a>
SLOVAKIA	0800 - SAMSUNG (0800-726 786)	<a href="http://www.samsung.com">http://www.samsung.com</a>
SPAIN	902 - 1 - SAMSUNG (902 172 678)	<a href="http://www.samsung.com">http://www.samsung.com</a>
SWEDEN	0771 726 7864 (SAMSUNG)	<a href="http://www.samsung.com">http://www.samsung.com</a>
SWITZERLAND	0848-SAMSUNG (7267864, CHF 0.08/min)	<a href="http://www.samsung.com/ch">http://www.samsung.com/ch</a> (German) <a href="http://www.samsung.com/ch_fr">http://www.samsung.com/ch_fr</a> (French)
U.K	0330 SAMSUNG (7267864)	<a href="http://www.samsung.com">http://www.samsung.com</a>

CIS		
ARMENIA	0-800-05-555	<a href="http://www.samsung.com">http://www.samsung.com</a>
AZERBAIJAN	088-55-55-555	<a href="http://www.samsung.com">http://www.samsung.com</a>
BELARUS	810-800-500-55-500	<a href="http://www.samsung.com">http://www.samsung.com</a>
GEORGIA	0-800-555-555	<a href="http://www.samsung.com">http://www.samsung.com</a>
KAZAKHSTAN	8-10-800-500-55-500 (GSM: 7799)	<a href="http://www.samsung.com">http://www.samsung.com</a>
KYRGYZSTAN	00-800-500-55-500	<a href="http://www.samsung.com">http://www.samsung.com</a>
MOLDOVA	0-800-614-40	<a href="http://www.samsung.com">http://www.samsung.com</a>
MONGOLIA	+7-800-555-55-55	<a href="http://www.samsung.com">http://www.samsung.com</a>
RUSSIA	8-800-555-55-55	<a href="http://www.samsung.com">http://www.samsung.com</a>
TADJIKISTAN	8-10-800-500-55-500	<a href="http://www.samsung.com">http://www.samsung.com</a>
UKRAINE	0-800-502-000	<a href="http://www.samsung.com/ua">http://www.samsung.com/ua</a> (Ukrainian) <a href="http://www.samsung.com/ua_ru">http://www.samsung.com/ua_ru</a> (Russian)
UZBEKISTAN	8-10-800-500-55-500	<a href="http://www.samsung.com">http://www.samsung.com</a>

# Appendix

ASIA PACIFIC		
AUSTRALIA	1300 362 603	<a href="http://www.samsung.com">http://www.samsung.com</a>
CHINA	400-810-5858	<a href="http://www.samsung.com">http://www.samsung.com</a>
HONG KONG	(852) 3698 - 4698	<a href="http://www.samsung.com/hk">http://www.samsung.com/hk</a> (Chinese) <a href="http://www.samsung.com/hk_en">http://www.samsung.com/hk_en</a> (English)
INDIA	1800 3000 8282 1800 266 8282	<a href="http://www.samsung.com/in">http://www.samsung.com/in</a>
INDONESIA	0800-112-8888 021-5699-7777	<a href="http://www.samsung.com/id">http://www.samsung.com/id</a>
JAPAN	0120-327-527	<a href="http://www.samsung.com">http://www.samsung.com</a>
MALAYSIA	1800-88-9999	<a href="http://www.samsung.com/my">http://www.samsung.com/my</a>
NEW ZEALAND	0800 SAMSUNG (0800 726 786)	<a href="http://www.samsung.com">http://www.samsung.com</a>
PHILIPPINES	1-800-10-SAMSUNG (726-7864) for PLDT 1-800-3-SAMSUNG (726-7864) for Digitel 1-800-8-SAMSUNG (726-7864) for Globe 02-5805777	<a href="http://www.samsung.com/ph">http://www.samsung.com/ph</a>
SINGAPORE	1800-SAMSUNG (726-7864)	<a href="http://www.samsung.com">http://www.samsung.com</a>
TAIWAN	0800-329-999 0266-026-066	<a href="http://www.samsung.com">http://www.samsung.com</a>
THAILAND	1800-29-3232 02-689-3232	<a href="http://www.samsung.com/th">http://www.samsung.com/th</a>
VIETNAM	1 800 588 889	<a href="http://www.samsung.com">http://www.samsung.com</a>

MENA		
BAHRAIN	8000-4726	<a href="http://www.samsung.com/ae">http://www.samsung.com/ae</a> (English) <a href="http://www.samsung.com/ae_ar">http://www.samsung.com/ae_ar</a> (Arabic)
EGYPT	08000-726786	<a href="http://www.samsung.com">http://www.samsung.com</a>
IRAN	021-8255	<a href="http://www.samsung.com">http://www.samsung.com</a>
JORDAN	800-22273 065777444	<a href="http://www.samsung.com/Levant">http://www.samsung.com/Levant</a> (English)

MENA		
KUWAIT	183-2255 (183-CALL)	<a href="http://www.samsung.com/ae">http://www.samsung.com/ae</a> (English) <a href="http://www.samsung.com/ae_ar">http://www.samsung.com/ae_ar</a> (Arabic)
MOROCCO	080 100 2255	<a href="http://www.samsung.com">http://www.samsung.com</a>
OMAN	800-SAMSUNG (726-7864)	<a href="http://www.samsung.com/ae">http://www.samsung.com/ae</a> (English) <a href="http://www.samsung.com/ae_ar">http://www.samsung.com/ae_ar</a> (Arabic)
QATAR	800-2255 (800-CALL)	<a href="http://www.samsung.com/ae">http://www.samsung.com/ae</a> (English) <a href="http://www.samsung.com/ae_ar">http://www.samsung.com/ae_ar</a> (Arabic)
SAUDI ARABIA	9200-21230	<a href="http://www.samsung.com/sa">http://www.samsung.com/sa</a> (Arabic)
SYRIA	18252273	<a href="http://www.samsung.com/Levant">http://www.samsung.com/Levant</a> (English)
TURKEY	444 77 11	<a href="http://www.samsung.com">http://www.samsung.com</a>
U.A.E	800-SAMSUNG (726-7864)	<a href="http://www.samsung.com">http://www.samsung.com</a>

AFRICA		
ANGOLA	91-726-7864	<a href="http://www.samsung.com">http://www.samsung.com</a>
BOTSWANA	0800-726-000	<a href="http://www.samsung.com">http://www.samsung.com</a>
CAMEROON	7095- 0077	<a href="http://www.samsung.com">http://www.samsung.com</a>
COTE D'IVOIRE	8000 0077	<a href="http://www.samsung.com">http://www.samsung.com</a>
GHANA	0800-10077 0302-200077	<a href="http://www.samsung.com">http://www.samsung.com</a>
KENYA	0800 545 545	<a href="http://www.samsung.com">http://www.samsung.com</a>
NAMIBIA	8197267864	<a href="http://www.samsung.com">http://www.samsung.com</a>
NIGERIA	0800-726-7864	<a href="http://www.samsung.com">http://www.samsung.com</a>
SENEGAL	800-00-0077	<a href="http://www.samsung.com">http://www.samsung.com</a>
SOUTH AFRICA	0860-SAMSUNG (726-7864)	<a href="http://www.samsung.com">http://www.samsung.com</a>
TANZANIA	0685 88 99 00	<a href="http://www.samsung.com">http://www.samsung.com</a>
UGANDA	0800 300 300	<a href="http://www.samsung.com">http://www.samsung.com</a>
ZAMBIA	211350370	<a href="http://www.samsung.com">http://www.samsung.com</a>

## Responsibility for the Pay Service (Cost to Customers)



When the service is requested, in spite of in warranty, we may charge you for a visit from a service technician in the following cases.

### Not a product defect

Cleaning of the product, Adjustment, Explanation, Re-installation and etc.

- If a service technician gives instructions on how to use product or simply adjusts options without disassembling product.
- If a defect is caused by external environmental factors (Internet, Antenna, Wired Signal, etc.)
- If a product is reinstalled or devices are connected additionally after installing the purchased product for the first time.
- If a product is reinstalled to move to a different spot or to move to a different house.
- If customer requests instructions on how to use because of another company's product.
- If customer requests instructions on how to use the network or another company's program.
- If customer requests software installation and setup for the product.
- If a service technician removes/cleans dusts or foreign materials inside of the product.
- If customer requests an installation additionally after purchasing a product through home-shopping or online.

### A Product damage caused by customer's fault

Product damage caused by customer's mishandling or wrong repair.

If a product damage is caused by;

- external impact or drop .
- use of supplies or separately sold product unspecified by Samsung.
- repair from a person besides an engineer of outsourcing service company or partner of Samsung Electronics Co., Ltd.
- remodeling or repairing the product by customer.
- using it with incorrect voltage or non-authorised electrical connections.
- not following the "cautions" in User Manual.

### Others

- If product fails by natural disaster (lightning, fire, earthquake, flood damage, etc) .
- If consumable components are all used up (Battery, Toner, Fluorescent lights, Head, Vibrator, Lamp, Filter, Ribbon, etc.)



If customer requests a service in case the product has no defect, service fee may be charged. So please read User Manual first.

## Correct Disposal

### Correct Disposal of This Product (Waste Electrical & Electronic Equipment)



(Applicable in countries with separate collection systems)

This marking on the product, accessories or literature indicates that the product and its electronic accessories (e.g. charger, headset, USB cable) should not be disposed of with other household waste at the end of their working life. To prevent possible harm to the environment or human health from uncontrolled waste disposal, please separate these items from other types of waste and recycle them responsibly to promote the sustainable reuse of material resources.

Household users should contact either the retailer where they purchased this product, or their local government office, for details of where and how they can take these items for environmentally safe recycling.

Business users should contact their supplier and check the terms and conditions of the purchase contract. This product and its electronic accessories should not be mixed with other commercial wastes for disposal.

## Terminology

### OSD(On Screen Display)

On screen display (OSD) allows you to configure on-screen settings to optimize the picture quality as required. It allows you to change the screen brightness, tint, size and many other settings using menus displayed on the screen.

### Gamma

The Gamma menu adjusts the grey scale that represents middle tones on the screen. Adjusting the brightness brightens the whole screen, but adjusting Gamma only brightens the medium brightness.

### Grey scale

Scale refers to levels of color intensity that show variations of color change from darker areas to brighter areas on the screen. Changes to the screen brightness are expressed with black and white variation, and grey scale refers to the medium area between black and white. Changing the grey scale through Gamma adjustment will change the medium brightness on the screen.

### Scanning rate

Scanning rate, or refresh rate, refers to the frequency of screen refreshes. Screen data is transmitted as it refreshes to display an image, although the refreshing is invisible to the naked eye. The number of screen refreshes is called scanning rate and is measured in Hz. A scanning rate of 60Hz means that the screen refreshes 60 times per second. The screen scanning rate depends on the performance of the graphics cards in your PC and monitor.

### Horizontal Frequency

Characters or images displayed on the monitor screen consist of numerous dots (pixels). Pixels are transmitted in horizontal lines, which are then arranged vertically to create an image. The horizontal frequency is measured in kHz and represents how many times horizontal lines per second are transmitted and displayed on the monitor screen. A horizontal frequency of 85 means that the horizontal lines that make up an image are transmitted 85 000 times per second, and the horizontal frequency is indicated in 85kHz.

### Vertical Frequency

One image is made of numerous horizontal lines. The vertical frequency is measured in Hz and represents how many images can be created per second by those horizontal lines. A vertical frequency of 60 means that an image is transmitted 60 times per second. The vertical frequency is also called "refresh rate" and affects screen flicker.

## Resolution

Resolution is the number of horizontal pixels and vertical pixels that form a screen. It represents the level of display detail.

A higher resolution displays a greater amount of information on the screen and is suitable for performing multiple tasks at the same time.

E.g. A resolution of 1920 x 1080 consists of 1,920 horizontal pixels (horizontal frequency) and 1,080 vertical lines (vertical resolution).

## Plug & Play

The Plug & Play feature allows the automatic exchange of information between a monitor and PC to produce an optimum display environment.

The monitor uses VESA DDC (international standard) to execute Plug & Play.



# Index

---

## A

Appendix 111

## B

Before Connecting 26

Blue 49

Brightness 36

## C

Checking the Contents 17

Cleaning 8

Coarse 45

Color Tone 50

Connecting and Using a PC 27

Contact SAMSUNG WORLD WIDE 111

Contrast 37

Copyright 7

Correct Disposal 118

Correct posture to use the product 16

Customized Key 63

## D

Display Time 54

## E

Eco Saving 57

## F

Fine 46

## G

Gamma 51

General 79

Green 48

## I

Image Size 42

INFORMATION 64

Installation 22

## K

Key Repeat Time 61

## L

Language 52

## M

MagicRotation 71

MultiScreen 69

## O

Off Timer 58

## P

Parts 19

PC/AV Mode 60

## Q

Q & A 77

## R

Red 47

Requirements Before Contacting Samsung  
Customer Service Center 74

Reset 56

Responsibility for the Pay Service (Cost to  
Customers) 117

# Index

---

## S

Safety Precautions 10  
SAMSUNG MAGIC Angle 40  
SAMSUNG MAGIC Bright 39  
SAMSUNG MAGIC Upscale 41  
Sharpness 38  
Source Detection 62  
Standard Signal Mode Table 93

## T

Transparency 55  
Turn Off After 59