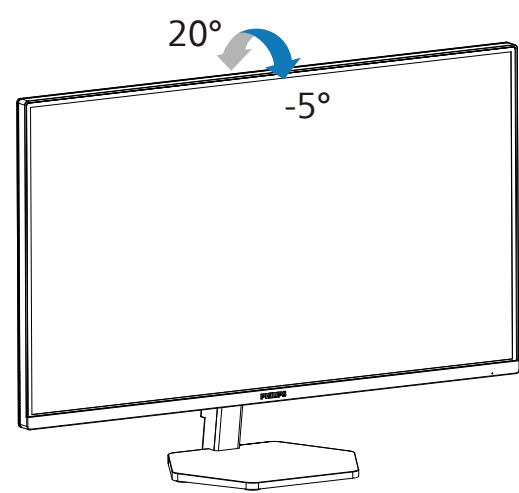
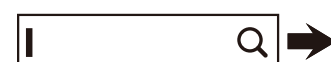


4



Register your product and get support at www.philips.com/support



FAQ



Software SmartControl



User Manual

Version: 32E1N3600Q1T
2022 © TOP Victory Investments Ltd. All rights reserved.

This product has been manufactured by and is sold under the responsibility of Top Victory Investments Ltd., and Top Victory Investments Ltd. is the warrantor in relation to this product. Philips and the Philips Shield Emblem are registered trademarks of Koninklijke Philips N.V. and are used under license.

Specifications are subject to change without notice.

HDMI

The terms HDMI, HDMI High-Definition Multimedia Interface, and the HDMI Logo are trademarks or registered trademarks of HDMI Licensing Administrator, Inc.

www.philips.com

Energy Labelling
32E1N3600LA



Printed in China



Q41G32M1813A07

PHILIPS

Monitor

3000 Series



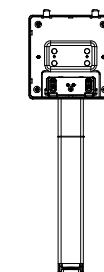
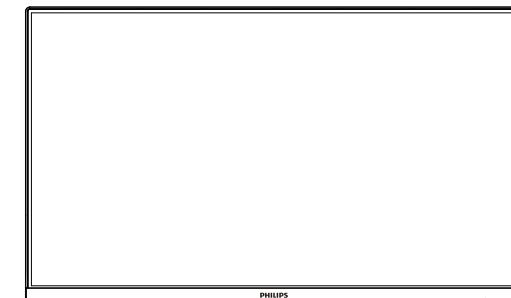
32E1N3600LA

Quick start

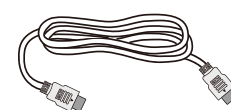
Register your product and get support at www.philips.com/welcome



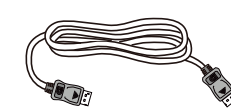
Contents



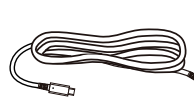
Power



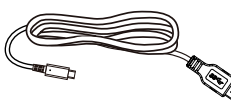
*HDMI



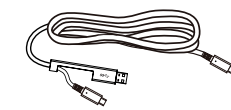
*DP



*USB C-C



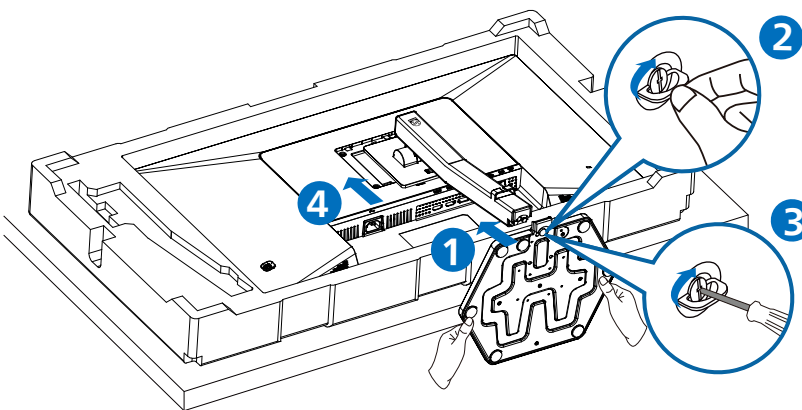
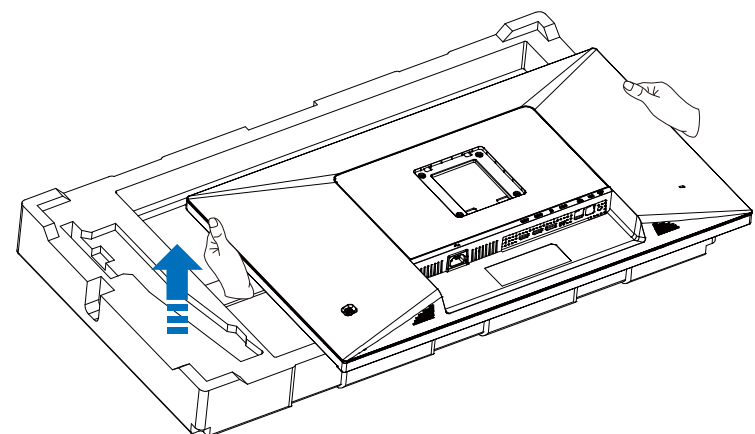
*USB C-A



*USB C-C/A

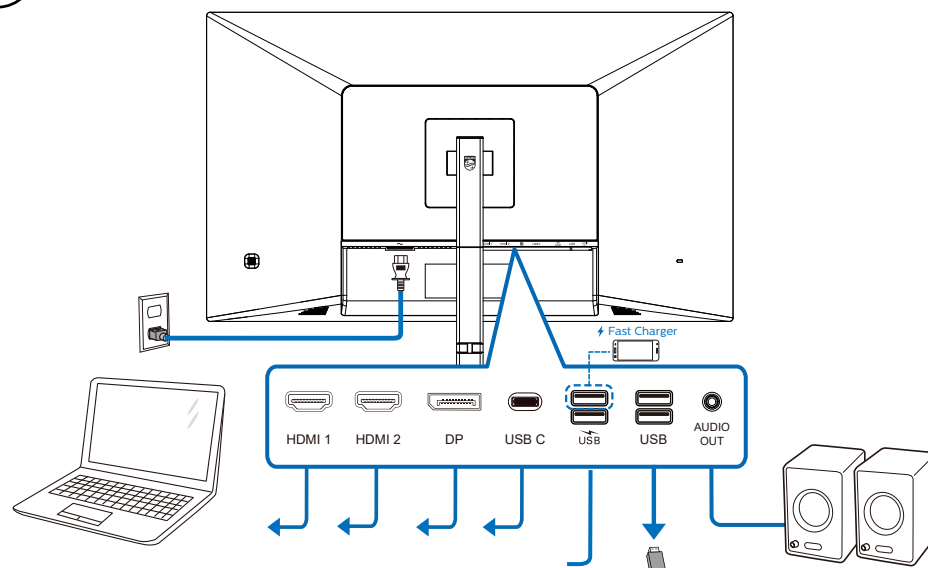
*Different according to region
Display design may differ from that illustrated

1

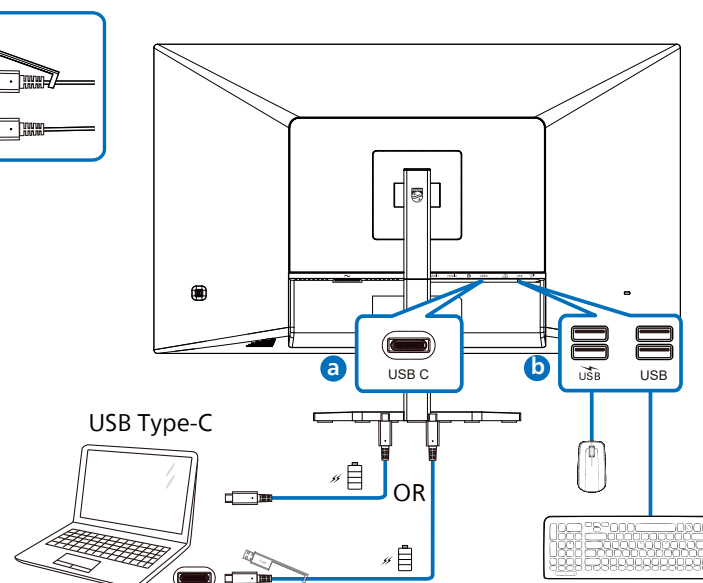
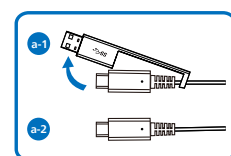


CAUTION: Place the monitor face down on a smooth surface. Pay attention not to scratch or damage the screen.

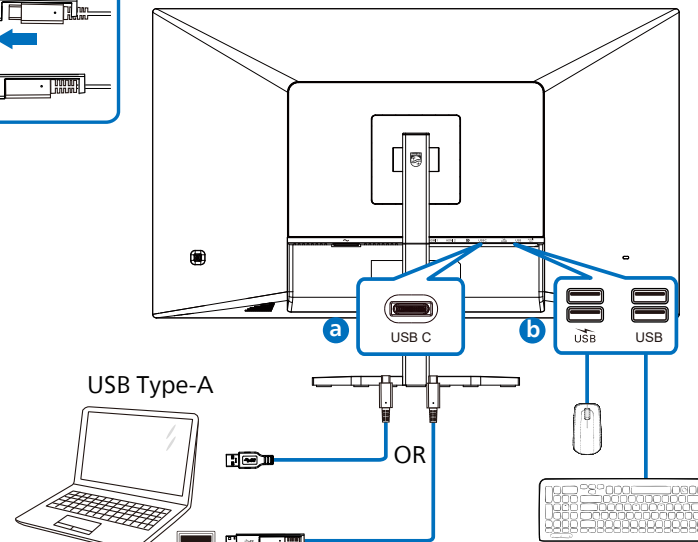
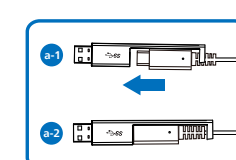
2



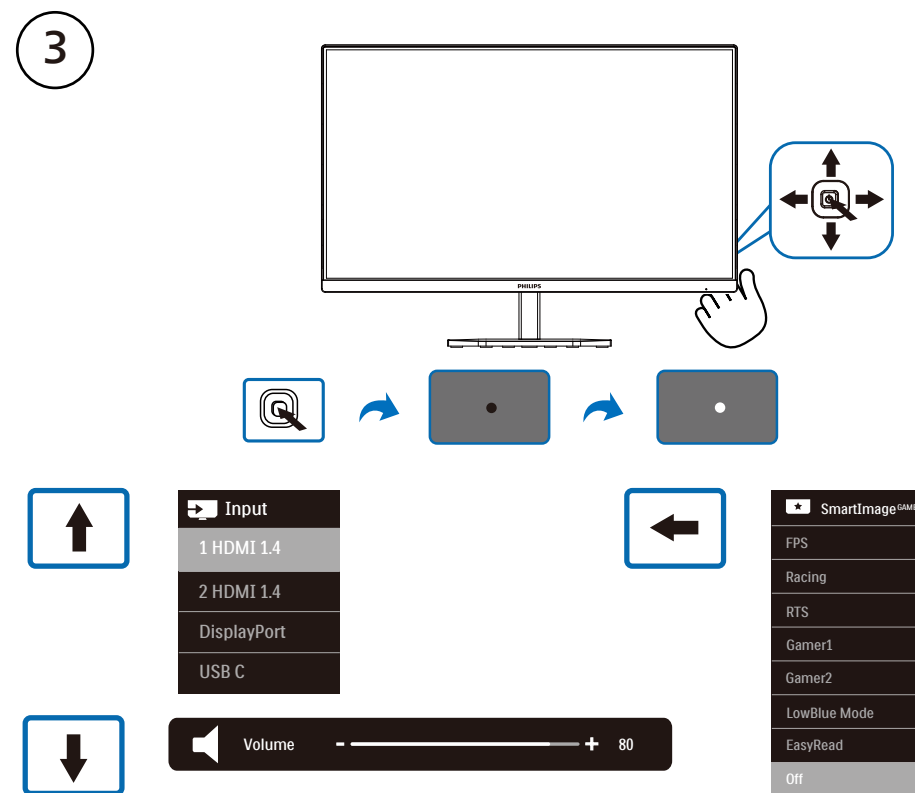
USB C-C



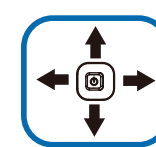
USB A-C



3



Game Setting	Adaptive Sync	On
MPRT	Off	0
MPRT Level	Off	0
SmartResponse	Off	Off
SmartFrame	Off	Off
Input		
Picture		
Audio		
Color		



Game Setting	Adaptive Sync	On
MPRT	Off	0
MPRT Level	Off	0
SmartResponse	Off	Off
SmartFrame	Off	Off
Input		
Picture		
Audio		
Color		



Game Setting	Adaptive Sync	On
MPRT	Off	0
MPRT Level	Off	0
SmartResponse	Off	Off
SmartFrame	Off	Off
Input		
Picture		
Audio		
Color		



Game Setting	Adaptive Sync	On
MPRT	Off	0
MPRT Level	Off	0
SmartResponse	Off	Off
SmartFrame	Off	Off
Input		
Picture		
Audio		
Color		