

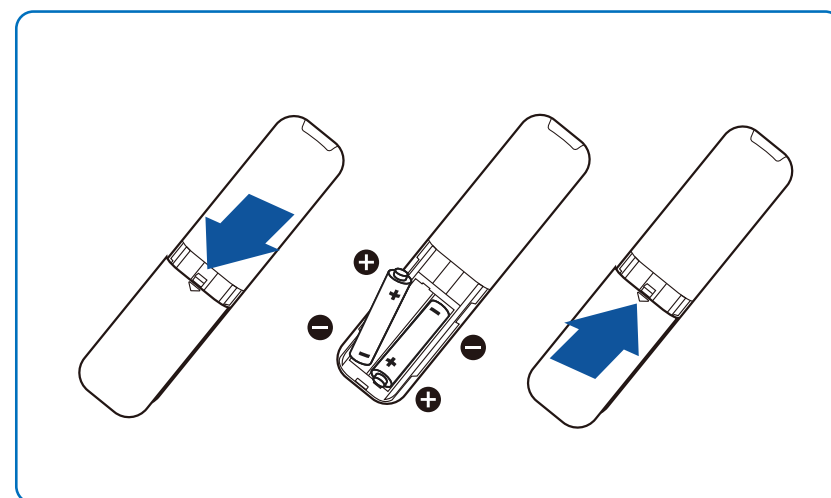
**PBP**

**A**<sub>(main)</sub>    **B**

**SWAP**

**B**<sub>(main)</sub>    **A**

		SUB SOURCE POSSIBILITY (x1)				
	Inputs	HDMI 1	HDMI 2	HDMI 3	DisplayPort	USB C
<b>MAIN SOURCE (x1)</b>	HDMI 1	●	●	●	●	●
	HDMI 2	●	●	●	●	●
	HDMI 3	●	●	●	●	●
	DisplayPort	●	●	●	●	●
	USB C	●	●	●	●	●



The diagram illustrates the navigation sequence for the TV. It starts with a square button on the screen, then moves to the power button, then to the menu button, and finally to the OK button on the remote.

