

**PHILIPS**

B Line

152B1/172B1



# Quick Start

Register your product and get support at  
[www.philips.com/welcome](http://www.philips.com/welcome)



Register your product and get support at  
[www.philips.com/support](http://www.philips.com/support)



FAQ



Software  
SmartControl



User  
Manual

Version: M101517BQ1WWT

2020 © TOP Victory Investments Ltd. All rights reserved. This product has been manufactured by and is sold under the responsibility of Top Victory Investments Ltd., and Top Victory Investments Ltd. is the warrantor in relation to this product. Philips and the Philips Shield Emblem are registered trademarks of Koninklijke Philips N.V. and are used under license.

Specifications are subject to change without notice.

**HDMI**

The terms HDMI, HDMI High-Definition Multimedia Interface, and the HDMI Logo are trademarks or registered trademarks of HDMI Licensing Administrator, Inc.

[www.philips.com](http://www.philips.com)

Energy Labelling

152BITFL

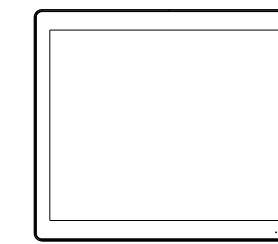
172BITFL



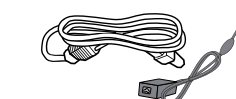
Printed in China



Q41G15M181301C



Screw\*16



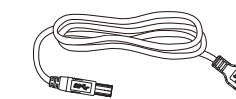
AC/DC Adapter



\* HDMI



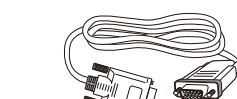
\* DVI



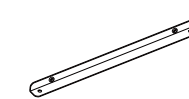
\*USB A-B



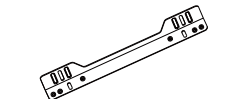
\* DP



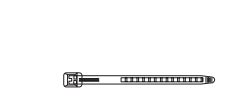
\* VGA



mounting-  
bkt-a\*4



mounting-  
bkt-b\*4



Clamper

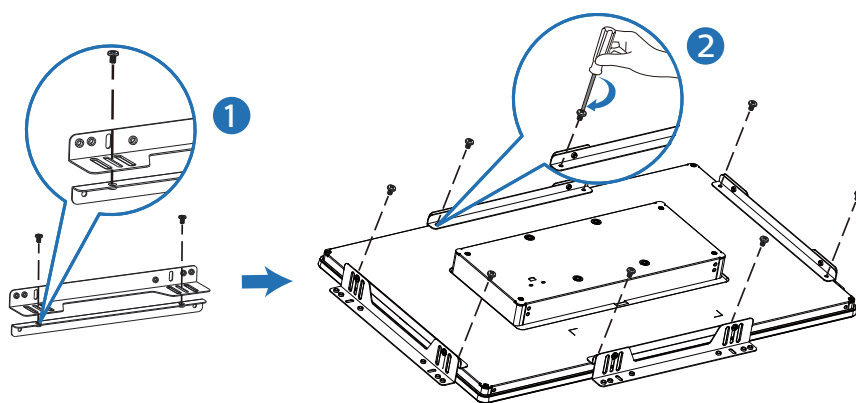


\* OSD keypad

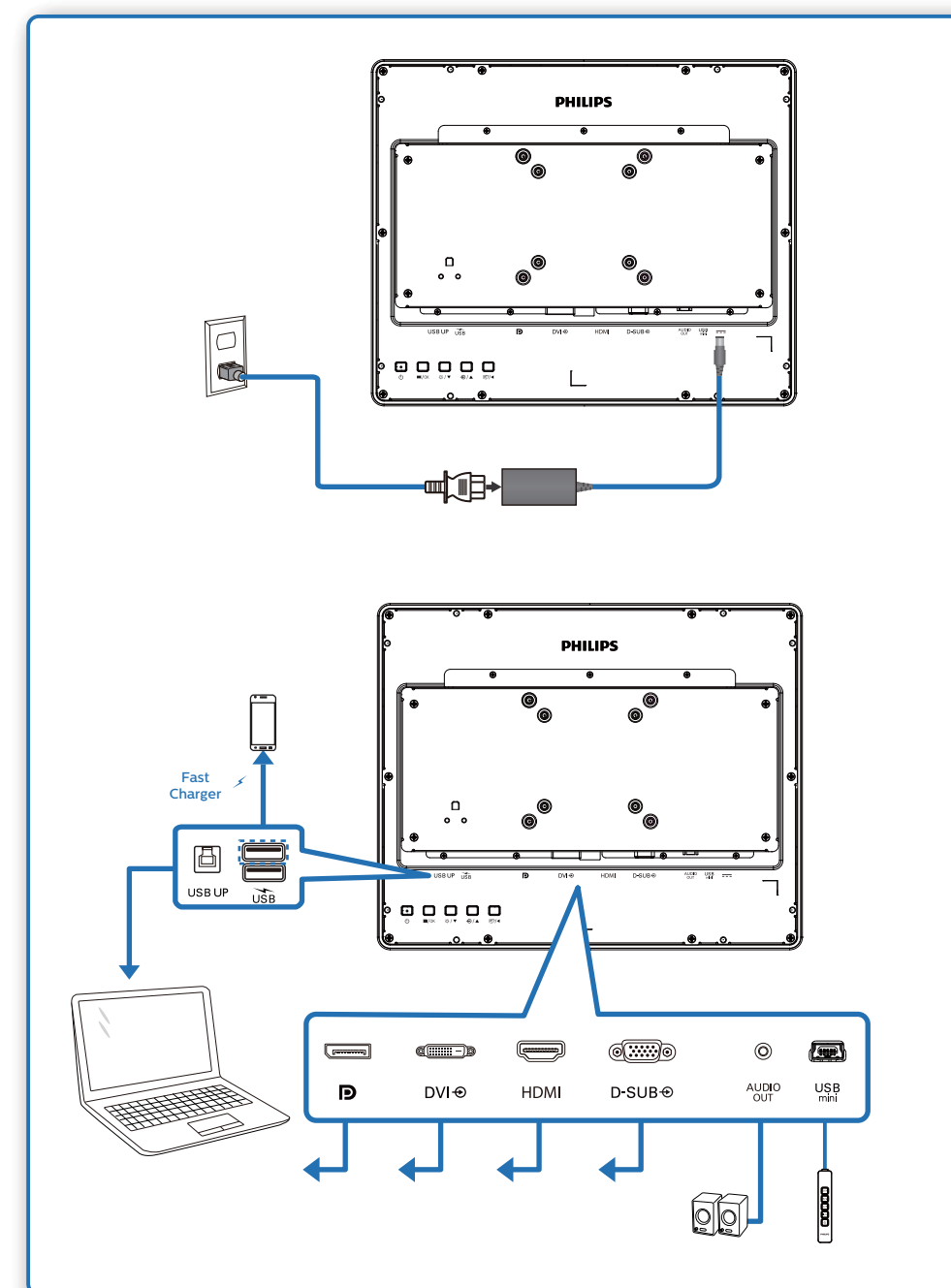
\* Different according to region.

Display design may differ from those illustrated.

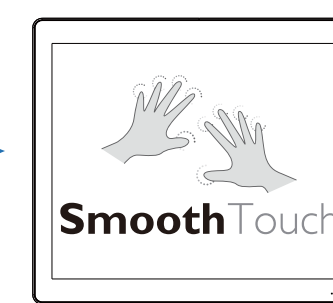
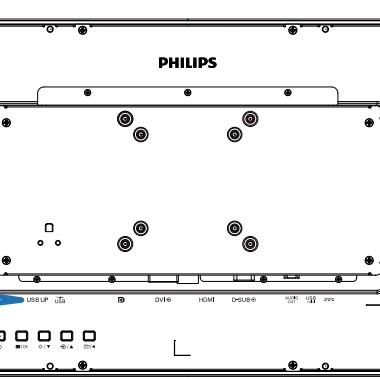
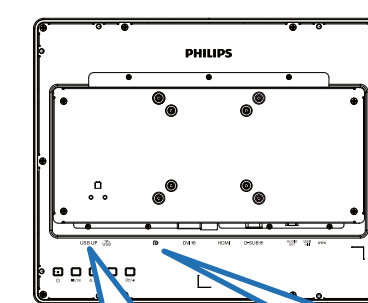
1



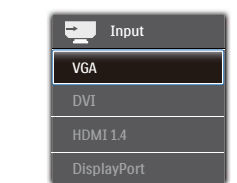
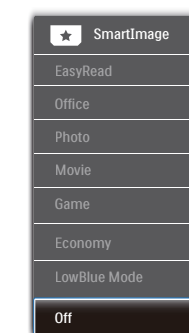
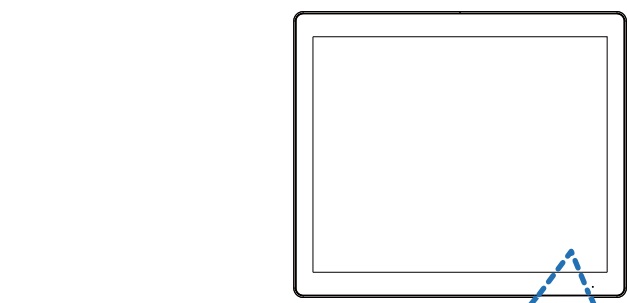
2



USB hub



SmoothTouch



Brightness - + 80