

PHILIPS

B Line

152B1/172B1



Quick Start

Register your product and get support at
www.philips.com/welcome



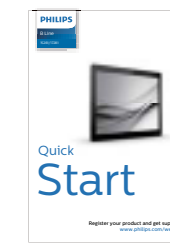
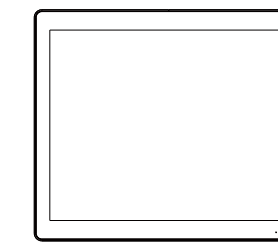
Register your product and get support at
www.philips.com/support



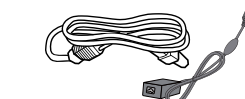
Version: M101517BQ1WWT
2020 © TOP Victory Investments Ltd. All rights reserved. This product has been manufactured by and is sold under the responsibility of Top Victory Investments Ltd., and Top Victory Investments Ltd. is the warrantor in relation to this product. Philips and the Philips Shield Emblem are registered trademarks of Koninklijke Philips N.V. and are used under license.
Specifications are subject to change without notice.

HDMI

The terms HDMI, HDMI High-Definition Multimedia Interface, and the HDMI Logo are trademarks or registered trademarks of HDMI Licensing Administrator, Inc.
www.philips.com



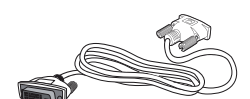
Screw*16



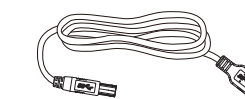
AC/DC Adapter



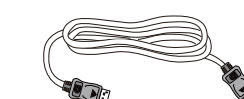
* HDMI



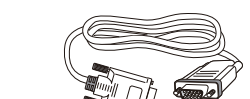
* DVI



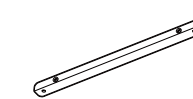
*USB A-B



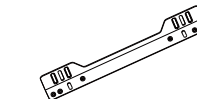
* DP



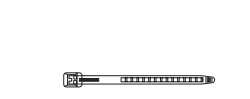
* VGA



mounting-
bkt-a*4



mounting-
bkt-b*4



Clamper

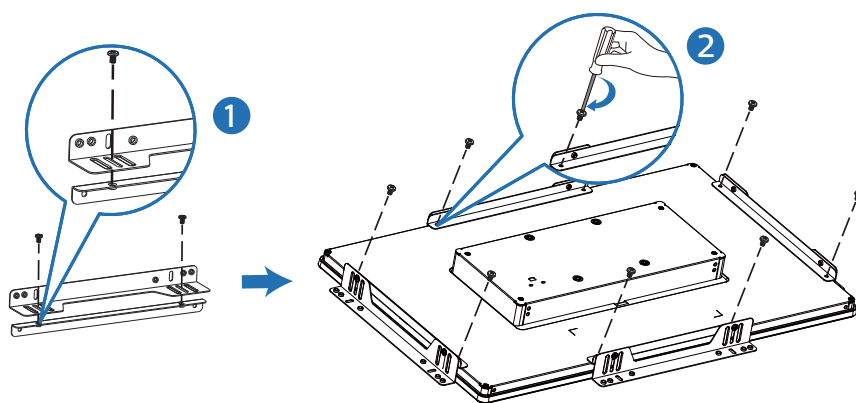


* OSD keypad

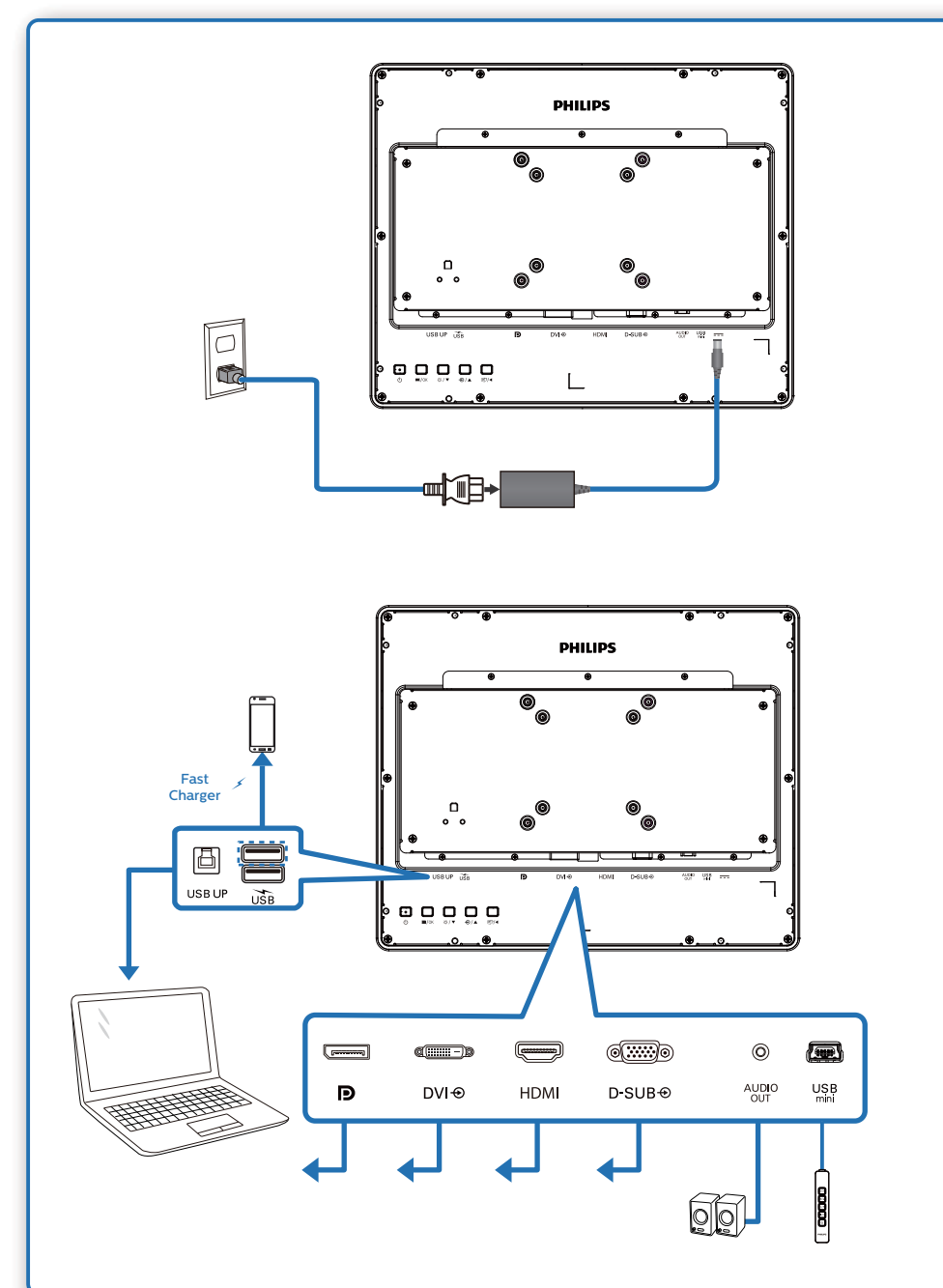
* Different according to region.

Display design may differ from those illustrated.

1



2



USB hub

