

Philips
LCD monitor with
SoftBlue Technology

E Line
27" (68.6 cm)
Full HD (1920 x 1080)

276E7EDAB



SoftBlue Technology

developed for the wellbeing of your eyes

Designed for you: The elegant new Philips E-line monitor features new SoftBlue Technology for easy on the eyes brilliantly colored images.

Superb Picture Quality

- SoftBlue Technology easy on the eyes and maintains color
- IPS LED wide view technology for image and color accuracy
- 16:9 Full HD display for crisp detailed images
- LowBlue Mode for easy on-the-eyes productivity
- Less eye fatigue with Flicker-free technology
- SmartImage Lite for easy optimized image settings
- SmartContrast for deep black level details

Elegant Design

- EasySelect menu toggle key for quick on-screen menu access
- Elegant, slim design complements your home decor
- Superb glossy finish enhance your home decoration

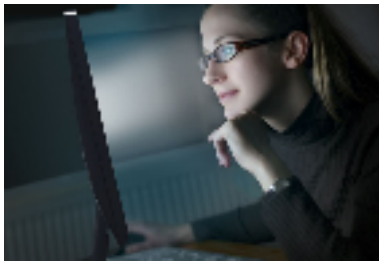
Experience immersive multimedia

- Built-in stereo speakers for multimedia
- MHL technology for enjoying mobile content on big screen

PHILIPS

Highlights

SoftBlue Technology



SoftBlue LED technology uses a smart technology to reduce harmful shortwave blue light without affecting the color or image of the display. SoftBlue LED technology is certified by international testing organizations TUV Rheinland to reduce harmful blue light.

IPS technology



IPS displays use an advanced technology which gives you extra wide viewing angles of 178/178 degree, making it possible to view the display from almost any angle. Unlike standard TN panels, IPS displays gives you remarkably crisp images with vivid colors, making it ideal not only for Photos, movies and web browsing, but also for professional applications which demand color accuracy and consistent brightness at all times.

16:9 Full HD display



Picture quality matters. Regular displays deliver quality, but you expect more. This display features enhanced Full HD 1920 x 1080 resolution. With Full HD for crisp detail paired

with high brightness, incredible contrast and realistic colors expect a true to life picture.

LowBlue Mode



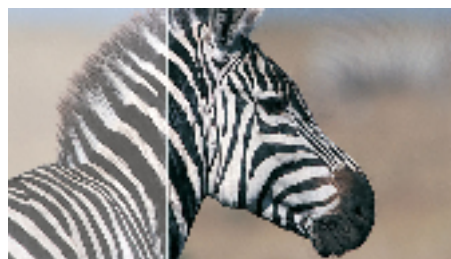
Studies have shown that just as ultra-violet rays can cause eye damage, shortwave length blue light rays from LED displays can cause eye damage and affect vision over time. Developed for wellbeing, Philips LowBlue Mode setting uses a smart software technology to reduce harmful shortwave blue light.

Flicker-free technology



Due to the way brightness is controlled on LED-backlit screens, some users experience flicker on their screen which causes eye fatigue. Philips Flicker-free Technology applies a new solution to regulate brightness and reduce flicker for more comfortable viewing.

SmartContrast



SmartContrast is a Philips technology that analyzes the contents you are displaying, automatically adjusting colors and controlling backlight intensity to dynamically enhance

contrast for the best digital images and videos or when playing games where dark hues are displayed. When Economy mode is selected, contrast is adjusted and backlighting fine-tuned for just-right display of everyday office applications and lower power consumption.

EasySelect Menu Toggle Key



The discreetly placed EasySelect Menu Toggle Key allows you to make quick and easy adjustments to monitor settings in the On-Screen Display menu.

Built-in stereo speakers

A pair of high quality stereo speakers built into a display device. It can be visible front firing, or invisible down firing, top firing, rear firing, etc depending on model and design.

MHL technology



Mobile High Definition Link (MHL) is a mobile audio/video interface for directly connecting mobile phones and other portable devices to high-definition displays. An optional MHL cable allows you to simply connect your MHL capable mobile device to this large Philips MHL display, and watch your HD videos come to life with full digital sound. Now not only you can enjoy your mobile games, photos, movies, or other apps on its big screen, you can simultaneously charge your mobile device so you never run out of power half way.



Specifications

Picture/Display

- LCD panel type: IPS technology
- Backlight type: W-LED system
- Panel Size: 27 inch / 68.6 cm
- Effective viewing area: 597.9 (H) x 336.3 (V)
- Aspect ratio: 16:9
- Optimum resolution: 1920 x 1080 @ 60Hz
- Pixel Density: 82 PPI
- Response time (typical): 5 ms (Gray to Gray)*
- Brightness: 250 cd/m²
- Contrast ratio (typical): 1000:1
- SmartContrast: 20,000,000:1
- Pixel pitch: 0.311 x 0.311 mm
- Viewing angle: 178° (H) / 178° (V), @ C/R > 10
- Flicker-free
- Picture enhancement: SmartImage Lite
- Display colors: 16.7 M
- Scanning Frequency: 30 - 83 kHz (H) / 56 - 76 Hz (V)
- SoftBlue
- LowBlue Mode
- MHL: 1080p @ 60Hz
- sRGB

Connectivity

- Signal Input: VGA (Analog), DVI-D (digital, HDCP), MHL-HDMI (digital, HDCP)
- Sync Input: Separate Sync, Sync on Green
- Audio (In/Out): PC audio-in, Headphone out

Convenience

- Built-in Speakers: 3 W x 2
- User convenience: Power On/Off, Menu, Volume, Input, SmartImage lite
- OSD Languages: Brazil Portuguese, Czech, Dutch, English, Finnish, French, German, Greek, Hungarian, Italian, Japanese, Korean, Polish, Portuguese, Russian, Simplified Chinese, Spanish, Swedish, Traditional Chinese, Turkish, Ukrainian
- Other convenience: Kensington lock, VESA mount (100x100mm)
- Plug & Play Compatibility: DDC/CI, Mac OS X, sRGB, Windows 10 / 8.1 / 8 / 7

Stand

- Tilt: -5/20 degree

Power

- On mode: 19.07 W (typ.) (EnergyStar 7.0 test method)
- Standby mode: 0.5 W (typ.)
- Off mode: 0.3 W (typ.)
- Power LED indicator: Operation - White, Standby mode- White (blinking)
- Power supply: External, 100-240VAC, 50-60Hz

Dimensions

- Product with stand (mm): 623 x 469 x 179 mm
- Product without stand (mm): 623 x 374 x 50 mm
- Packaging in mm (WxHxD): 667 x 537 x 106 mm

Weight

- Product with stand (kg): 4.50 kg
- Product without stand (kg): 4.25 kg
- Product with packaging (kg): 6.02 kg

Operating conditions

- Temperature range (operation): 0°C to 40°C °C
- Temperature range (storage): -20°C to 60°C °C
- Relative humidity: 20%-80 %
- Altitude: Operation: +12,000ft (3,658m), Non-operation: +40,000ft (12,192m)
- MTBF: 50,000 (excluding backlight) hour(s)

Sustainability

- Environmental and energy: EnergyStar 7.0, EPEAT Silver, RoHS, Lead-free, Mercury Free
- Recyclable packaging material: 100 %

Compliance and standards

- Regulatory Approvals: CE Mark, RCM, CECP, CU, SASO, KUCAS, cETLus, TUV/ISO9241-307, EPA, WEEE, TCO certified, BSMI, FCC Class B, TUV Cert. - blue light cut-off, PSE, VCCI

Cabinet

- Color: Black & Gunmetal
- Finish: Glossy



Issue date 2017-11-16

Version: 1.0.1

12 NC: 8670 001 45594
EAN: 87 12581 74647 6

© 2017 Koninklijke Philips N.V.
All Rights reserved.

Specifications are subject to change without notice.
Trademarks are the property of Koninklijke Philips N.V.
or their respective owners.

www.philips.com

* This Philips display is MHL certified. However, in case your MHL device does not connect or work correctly, check with your MHL device FAQ or vendor directly for direction. The policy of your device manufacturer may require you to purchase their brand specific MHL cable or adapter in order to work

* Requires optional MHL certified mobile device and MHL cable. (not included) Please check with your MHL device vendor for compatibility.

* Standby/Off energy saving of ErP is not applicable for the MHL charging functionality

* For complete list of MHL-enabled products refer to www.mhlconsortium.org

* "IPS" word mark / trademark and related patents on technologies belong to their respective owners.

* Response time value equal to SmartResponse