



Philips Brilliance
LCD monitor with
SmartImage

B Line

19" (48.3 cm)
1280 x 1024 (SXGA)

Brilliance

19B4QCS5



Sustainable productivity

with an energy efficient ergonomic LED display

The Philips LED display using 85% recycled materials and PVC, BFR-free housing is ideal for eco-friendly productivity

Sustainable Eco-design

- SmartPower: Up to 50% power saving
- 100% recyclable packaging
- PVC-BFR free housing

Excellent performance

- IPS technology for full colours and wide viewing angles
- Less eye fatigue with Flicker-Free technology
- SmartImage pre-sets for easy optimised image settings
- SmartContrast 20,000,000:1 for incredible rich black details
- Built-in stereo speakers for multimedia

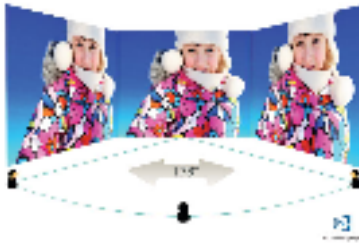
Designed for people

- SmartErgoBase enables user-friendly ergonomic adjustments
- Low bezel-to-table height for maximum reading comfort

PHILIPS

Highlights

IPS technology



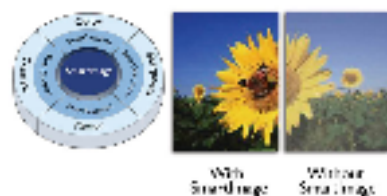
IPS displays use advanced technology that gives you extra-wide viewing angles of 178/178 degrees, making it possible to view the display from almost any angle — even in 90-degree Pivot mode! Unlike standard TN panels, IPS displays gives you remarkably crisp images with vivid colours, making it ideal not only for Photos, films and web browsing, but also for professional applications that demand colour accuracy and consistent brightness at all times.

Flicker-Free technology



Due to the way brightness is controlled on LED-backlit screens, some users experience flicker on their screen which causes eye fatigue. Philips Flicker-Free technology applies a new solution to regulate brightness and reduce flicker for more comfortable viewing.

SmartImage



SmartImage is an exclusive leading edge Philips technology that analyses the content displayed on your screen and optimises your display performance. This user-friendly interface

allows you to select various modes, like Office, Photo, Movie, Game, Economy etc., to fit the application in use. Based on the selection, SmartImage dynamically optimises the contrast, colour saturation and sharpness of images and videos for ultimate display performance. The Economy mode option offers you major power savings. All in real time at the touch of a single button!

SmartContrast ratio 20,000,000:1

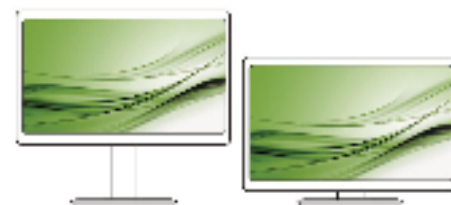


You want the LCD flat display with the highest contrast and most vibrant images. Philips advanced video processing combined with unique extreme dimming and backlight-boosting technology results in vibrant images. SmartContrast will increase the contrast with excellent black level and accurate rendition of dark shades and colours. It gives a bright, lifelike picture with high contrast and vibrant colours.

Built-in stereo speakers

A pair of high-quality stereo speakers built into a display device. They may be visible front firing, or invisible down firing, top firing, rear firing etc. depending on model and design.

Low bezel-to-table height



Thanks to its advanced SmartErgoBase, the Philips monitor can be lowered down almost to desk level for a comfortable viewing angle. Low bezel-to-table height is the perfect solution if you use bifocals, trifocals or progressive lens glasses for your computing

work. Additionally, it allows users of different heights to use the monitor at their preferred angle and height settings, helping them to reduce fatigue and strain.

SmartErgoBase



The SmartErgoBase is a monitor base that delivers ergonomic display comfort and provides cable management. The user-friendly height, swivel, tilt and rotation angle adjustments of the base allow the monitor to be positioned for maximum comfort to help ease the physical strains of a long workday. In addition, cable management reduces cable clutter and keeps the workspace neat and professional.

SmartPower

SmartPower is an artificial intelligent technology which dynamically analyses the content of the screen image to achieve power saving. The backlight intensity can be controlled automatically and pre-set by the system to reduce the power consumption by up to 50%, which saves substantially on energy costs

Sustainability

Philips is committed to using sustainable, eco-friendly materials across its monitor range. All body plastic parts, metal chassis parts and packing materials use 100% recyclable materials. In selected models, we utilise $\geq 65\%$ Post-Consumer Recycled plastics, ensuring reduction in waste. Strict adherence to RoHS standards ensures substantial reduction or elimination of toxic substances like Lead and Mercury. Our display housing is made up of PVC/BFR-free material. For more information, please visit Philips @ <http://www.asimpleswitch.com/global/> to learn more.



Wide Viewing Angle



FlickerFree



SmartImage



SmartContrast
20,000,000:1
Network Support



Built-in Speakers



SmartErgoBase



SmartPower



Sustainability

Specifications

Picture/Display

- LCD panel type: IPS technology
- Backlight type: W-LED system
- Panel Size: 19 inch/48.3 cm
- Effective viewing area: 374.78 (H) x 299.83 (V)
- Aspect ratio: 5:4
- Optimum resolution: 1280 x 1024 @ 60 Hz
- Response time (typical): 5 ms (Grey to Grey)*
- Brightness: 250 cd/m²
- Contrast ratio (typical): 1000:1
- SmartContrast: 20,000,000:1
- Pixel pitch: 0.2928 x 0.2928 mm
- Viewing angle: 178° (H)/178° (V), @ C/R > 10
- Flicker-free
- Picture enhancement: SmartImage
- Display colours: 16.7 M
- Scanning Frequency: 30 - 83 kHz (H) / 56 - 76 Hz (V)
- sRGB

Connectivity

- Signal Input: VGA (Analogue), DVI-D (digital, HDCP)
- Sync Input: Separate Sync, Sync on Green
- Audio (In/Out): PC audio-in, Headphone out

Convenience

- Built-in Speakers: 1.5 W x 2
- User convenience: SmartImage, Volume, SmartPower, Menu, Power On/Off
- Control software: SmartControl
- OSD Languages: Brazil Portuguese, Czech, Dutch, English, Finnish, French, German, Greek, Hungarian, Italian, Japanese, Korean, Polish, Portuguese, Russian, Simplified Chinese, Spanish, Swedish, Traditional Chinese, Turkish, Ukrainian
- Other convenience: Kensington lock, VESA mount (100 x 100 mm)
- Plug and Play Compatibility: DDC/CI, Mac OS X, sRGB, Windows 10 / 8.1 / 8 / 7

Stand

- Height adjustment: 110 mm
- Pivot: 90 degree
- Swivel: -65/65 degree
- Tilt: -5/20 degree

Power

- On mode: 17.33 W (typ.)

- Standby mode: <0.3 W (typ.)
- Off mode: <0.2 W (typ.)
- Power LED indicator: Operation - White, Standby mode - White (flashing)
- Power supply: 100–240 VAC, 50–60 Hz, Built-in

Dimensions

- Product with stand (max height): 404 x 506 x 227 mm
- Product without stand (mm): 404 x 346 x 61 mm
- Packaging in mm (W x H x D): 460 x 448 x 159 mm

Weight

- Product with stand (kg): 4.61 kg
- Product without stand (kg): 2.71 kg
- Product with packaging (kg): 6.48 kg

Operating conditions

- Temperature range (operation): 0 to 40 °C
- Temperature range (storage): -20 to 60 °C
- Relative humidity: 20–80% %
- Altitude: Operation: +12,000 ft (3658 m), Non-operation: +40,000 ft (12,192 m)
- MTBF: 70,000 hrs (excluded backlight) hour(s)

Sustainability

- Environmental and energy: TCO Certified, RoHS
- Recyclable packaging material: 100 %
- Recycled material: 85%
- Specific Substances: PVC/BFR free housing, Lead free, Mercury free

Compliance and standards

- Regulatory Approvals: CE Mark, FCC Class B, SEMKO, cETLus, TUV Ergo, TUV/GS, WEEE, CU, PSB, RCM

Cabinet

- Front bezel: Silver
- Rear cover: Black
- Foot: Black
- Finish: Texture

What's in the box?

- Monitor with stand
- Cables: D-Sub cable, DVI-D cable, Audio cable, Power cable
- User Documentation



Issue date 2020-05-01

Version: 5.0.1

12 NC: 8670 001 39779
EAN: 87 12581 74124 2

© 2020 Koninklijke Philips N.V.
All Rights reserved.

Specifications are subject to change without notice.
Trademarks are the property of Koninklijke Philips N.V.
or their respective owners.

www.philips.com

* "IPS" word mark / trademark and related patents on technologies
belong to their respective owners.

* Response time value equal to SmartResponse