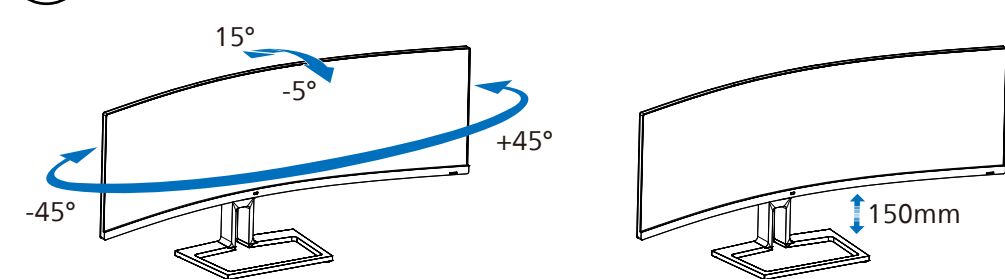
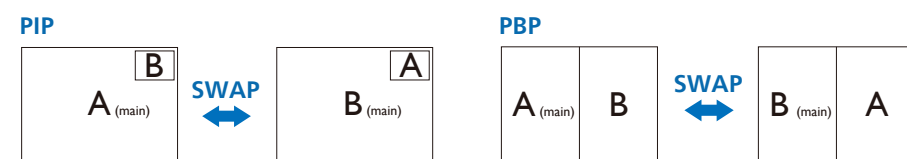
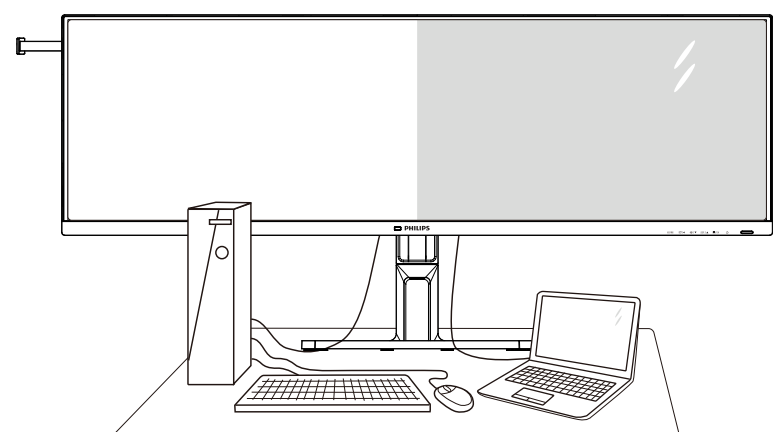


4



5



MultiView	Inputs	SUB SOURCE POSSIBILITY (x1)				
		HDMI 1	HDMI 2	DisplayPort	USBC	
MAIN SOURCE (x1)	HDMI 1	●	●	●	●	
	HDMI 2	●	●	●	●	
	DisplayPort	●	●	●	●	
	USBC	●	●	●	●	



Register your product and get support at www.philips.com/support

1



FAQ



Software SmartControl



User Manual

Version: M1145BU6900Q1VWVT
2022 © TOP Victory Investments Ltd. All rights reserved.

This product has been manufactured by and is sold under the responsibility of Top Victory Investments Ltd., and Top Victory Investments Ltd. is the warrantor in relation to this product. Philips and the Philips Shield Emblem are registered trademarks of Koninklijke Philips N.V. and are used under license.

Specifications are subject to change without notice.

HDMI

The terms HDMI, HDMI High-Definition Multimedia Interface, HDMI Trade Dress and the HDMI Logos are trademarks or registered trademarks of HDMI Licensing Administrator, Inc.

www.philips.com

Energy Labelling
45B1U6900C



Printed in China



Q41G45M181301A

PHILIPS

Curved Business
Monitor

6000 Series

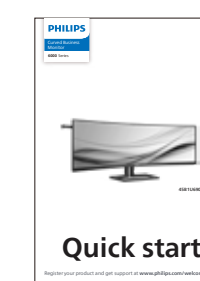
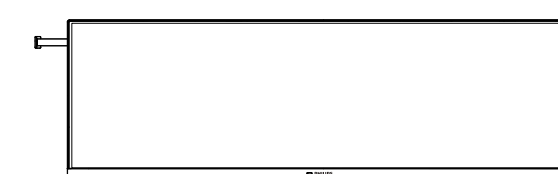


45B1U6900C

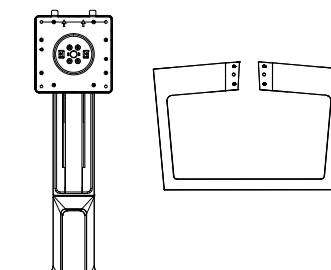
Quick start

Register your product and get support at www.philips.com/welcome

Contents



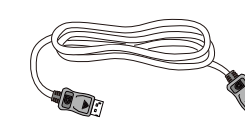
Quick start



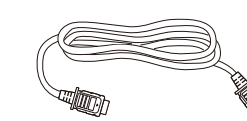
Screw and screwdriver
M4 x 4



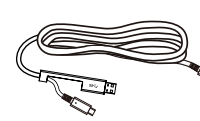
Power



* DP



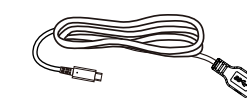
* HDMI



*USB C-C/A



*USB C-C



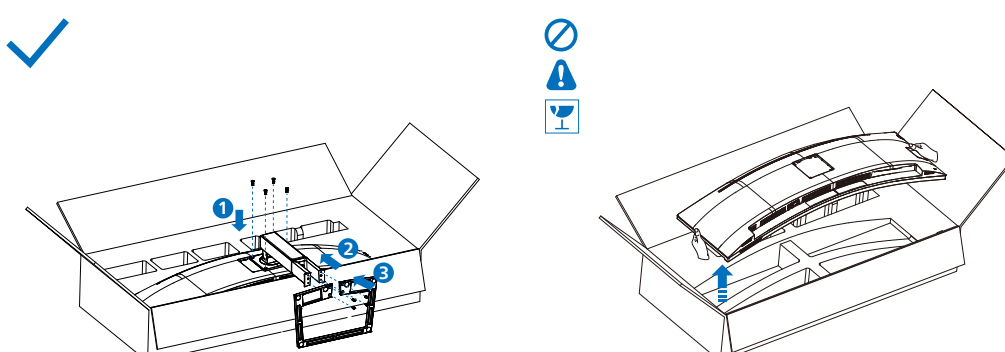
*USB C-A



*USB A-B

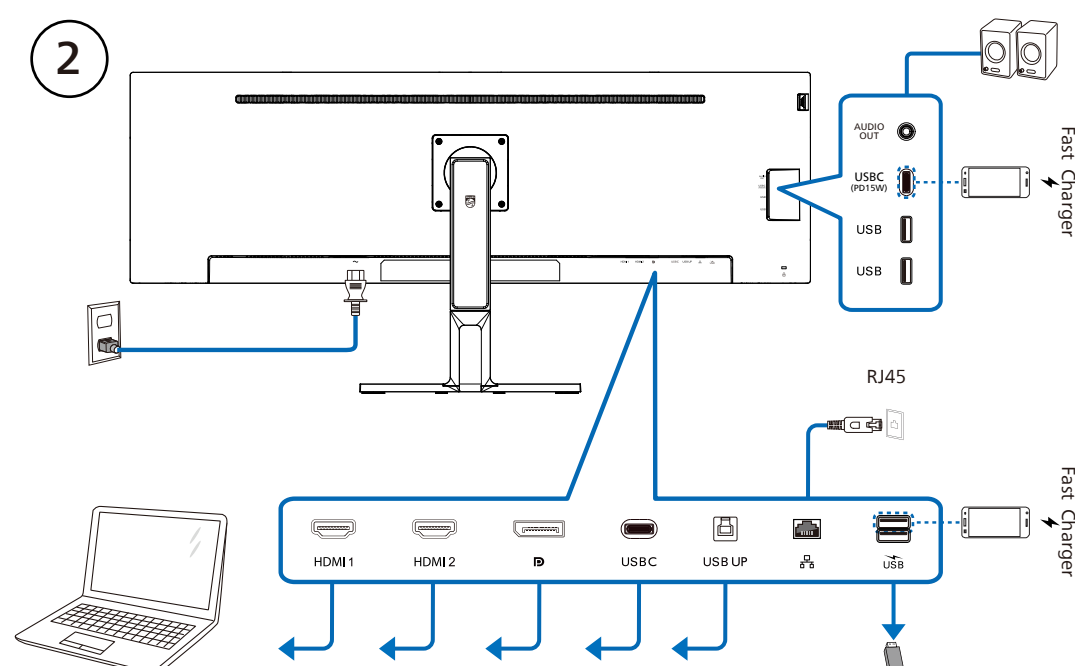
*Different according to region
Display design may differ from that illustrated

1

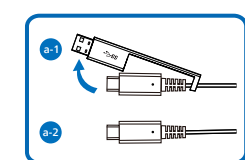


CAUTION: Place the monitor face down on a smooth surface. Pay attention not to scratch or damage the screen.

2

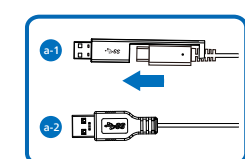


USB docking (USB C-C)



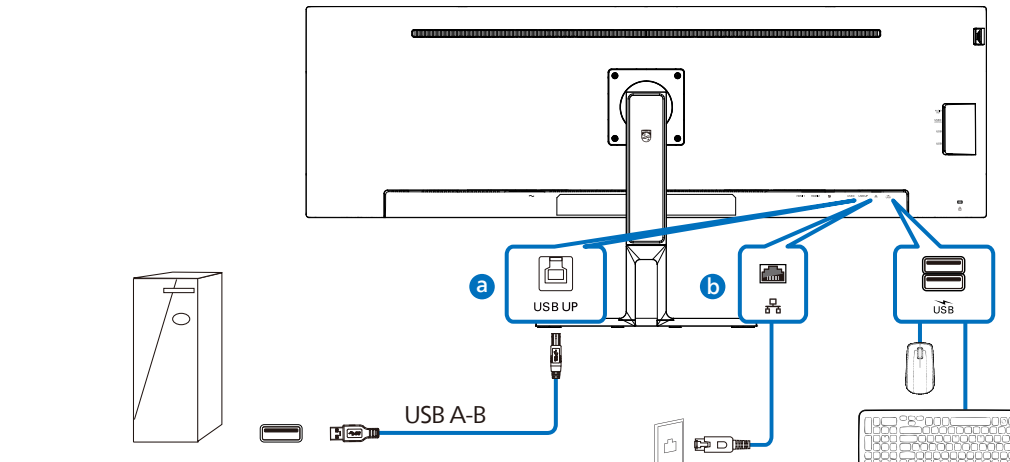
USB Type-C

USB hub (USB A-C)

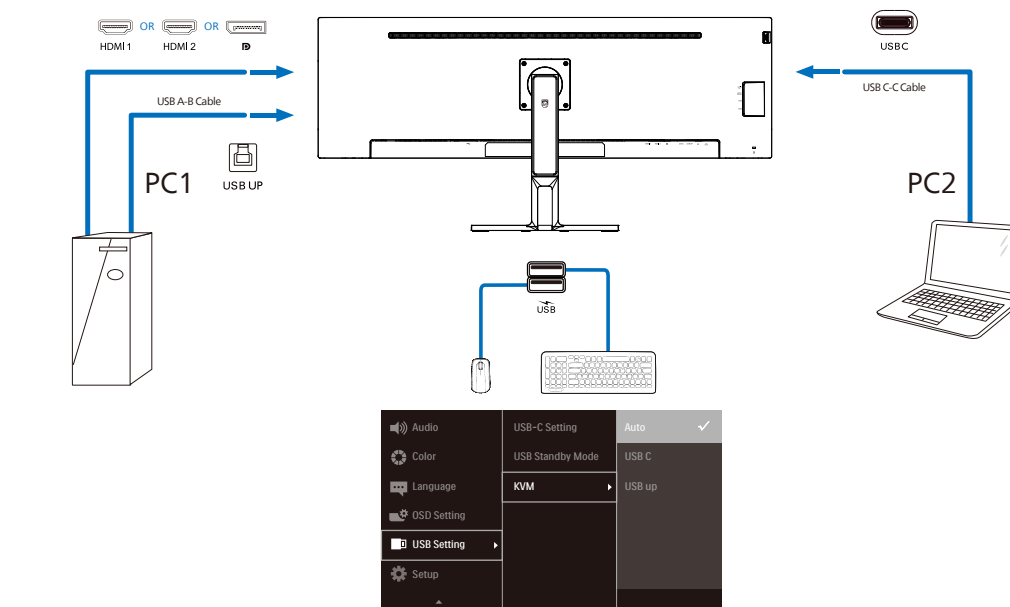


USB Type-A

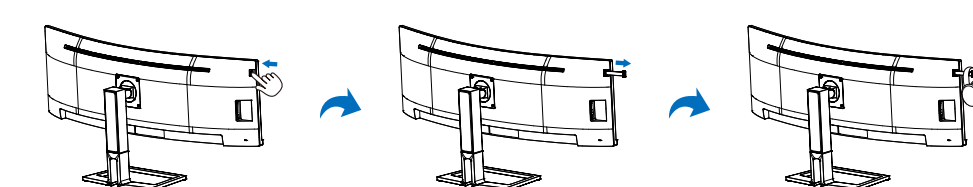
USB hub



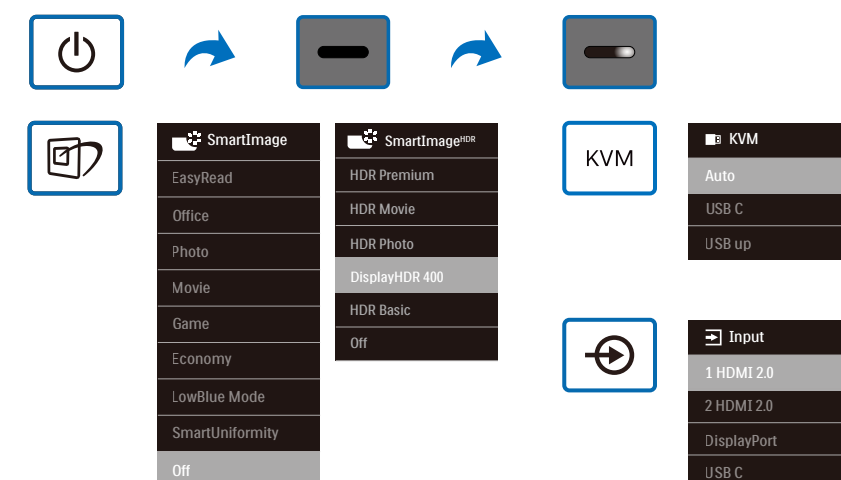
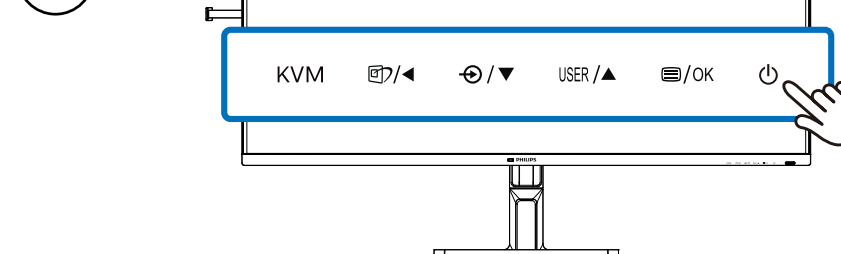
KVM



Earphone-Hang



3



USER

