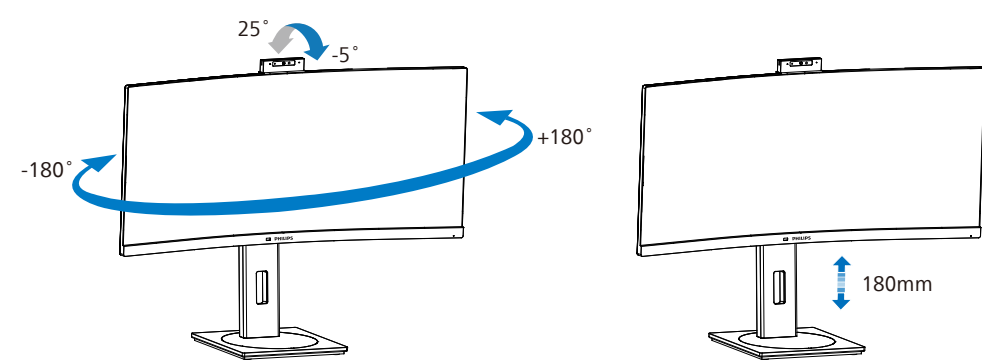
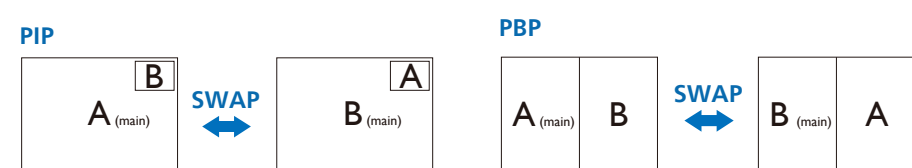
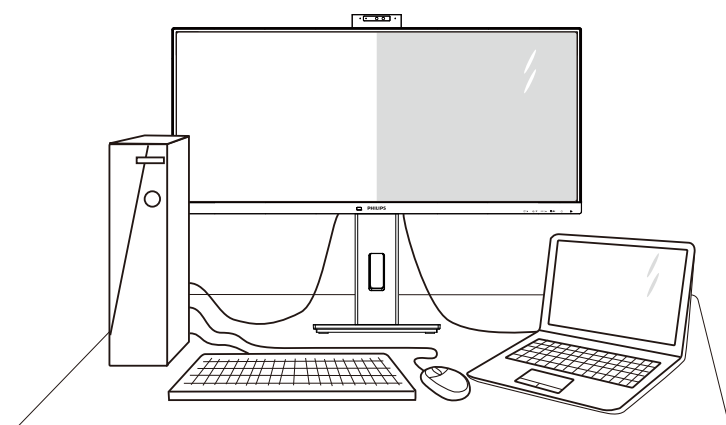


5



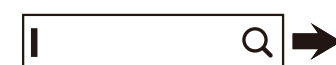
6



MultiView		SUB SOURCE POSSIBILITY (x1)			
MAIN SOURCE (x1)	Inputs	HDMI	DisplayPort	USBC1	
	HDMI	●	●	●	●
	DisplayPort	●	●	●	●
USBC1	USBC1	●	●	●	●



Register your product and get support at
www.philips.com/support



FAQ

Software
SmartControlUser
Manual

Version: M1134BU5600Q1WWT
 2022 © TOP Victory Investments Ltd. All rights reserved.

This product has been manufactured by and is sold under the responsibility of Top Victory Investments Ltd., and Top Victory Investments Ltd. is the warrantor in relation to this product. Philips and the Philips Shield Emblem are registered trademarks of Koninklijke Philips N.V. and are used under license.

Specifications are subject to change without notice.

HDMI®

The terms HDMI, HDMI High-Definition Multimedia Interface, HDMI Trade Dress and the HDMI Logos are trademarks or registered trademarks of HDMI Licensing Administrator, Inc.

www.philips.com

Energy Labelling
 34B1U5600CH



Printed in China



H41G78S381362C

PHILIPS

Business
Monitor

5000 Series



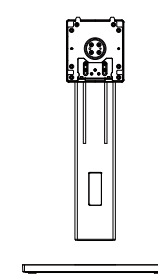
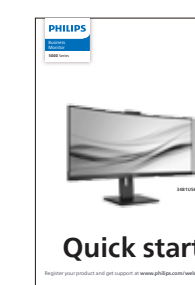
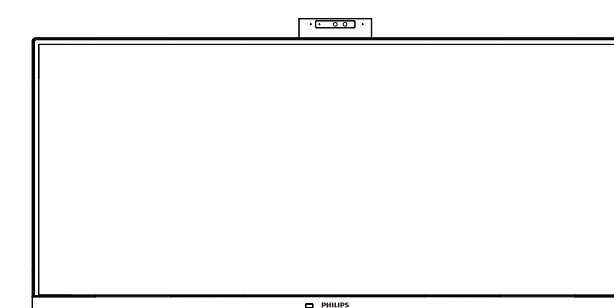
34B1U5600CH

Quick start

Register your product and get support at www.philips.com/welcome



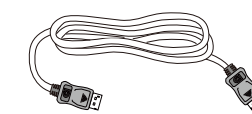
Contents



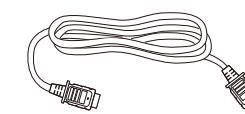
* I/O Cover



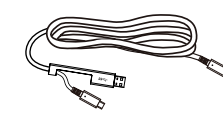
Power



* DP



* HDMI



*USB C-C/A



*USB C-C

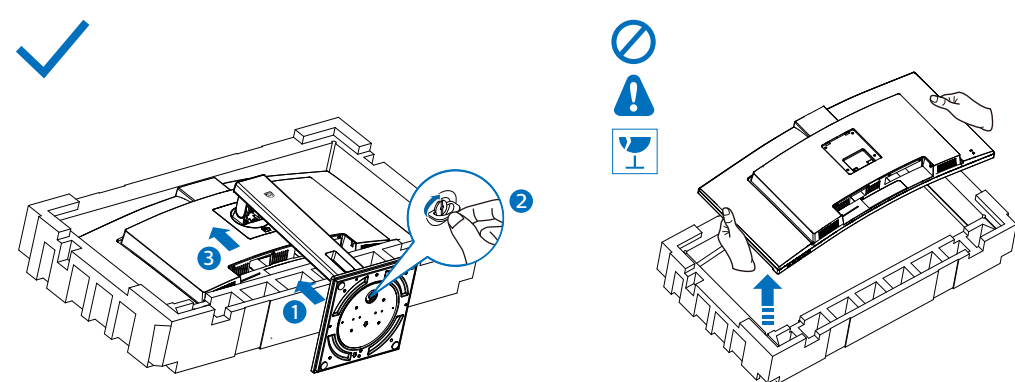


*USB C-A

*Different according to region

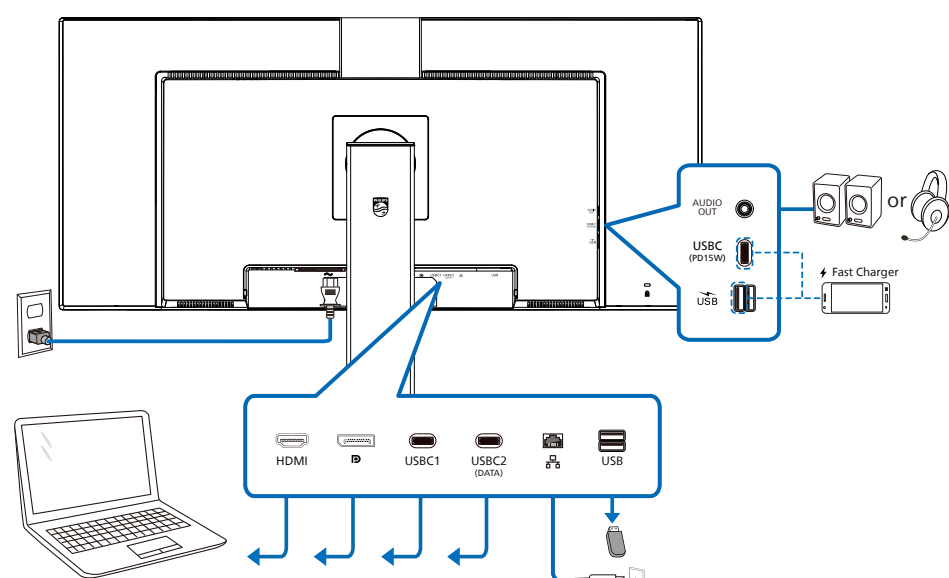
Display design may differ from that illustrated

1

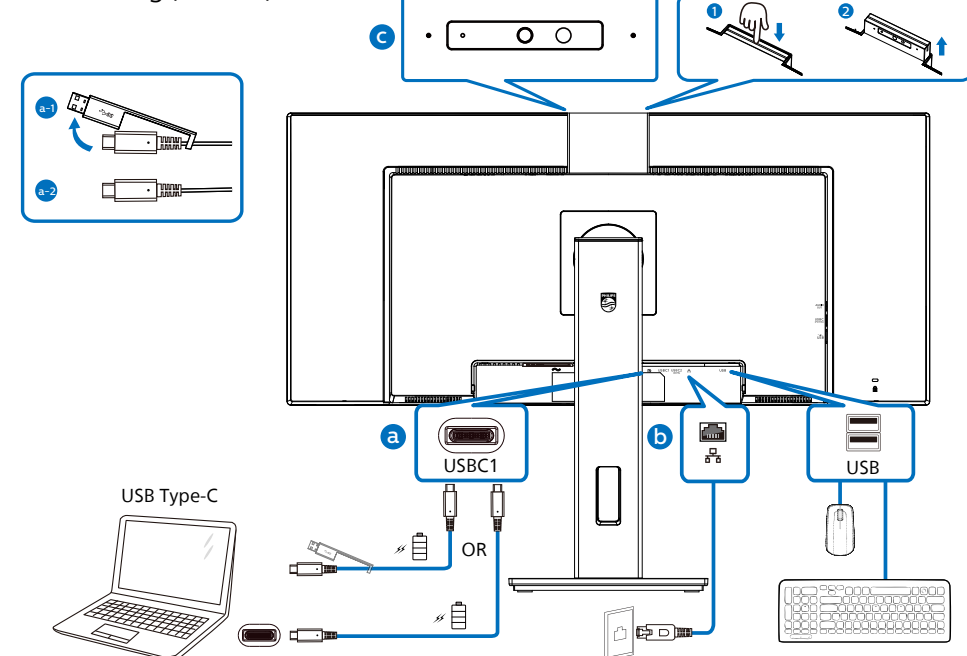


CAUTION: Place the monitor face down on a smooth surface. Pay attention not to scratch or damage the screen.

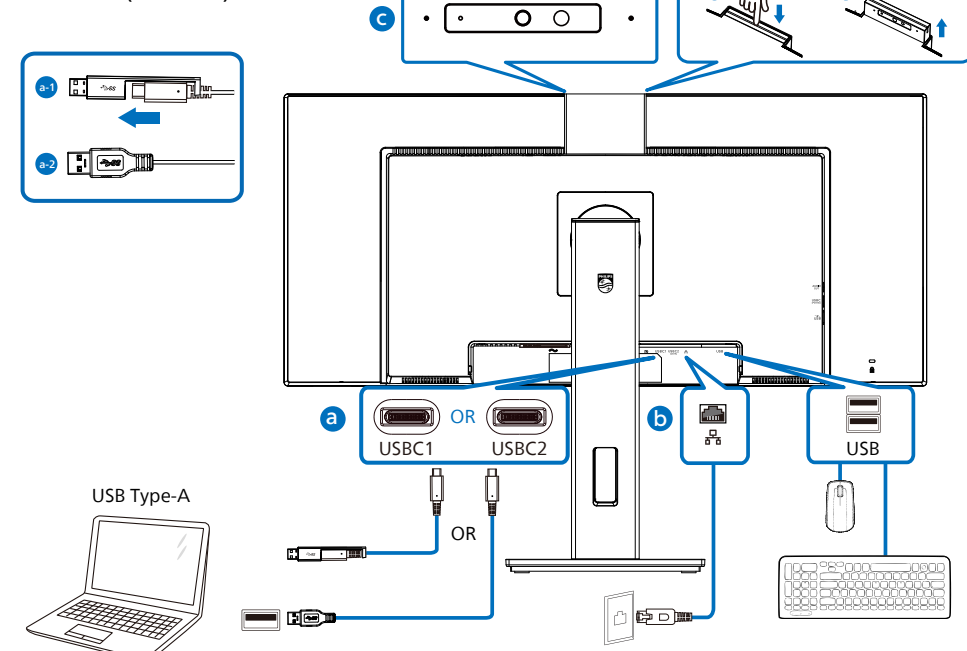
2



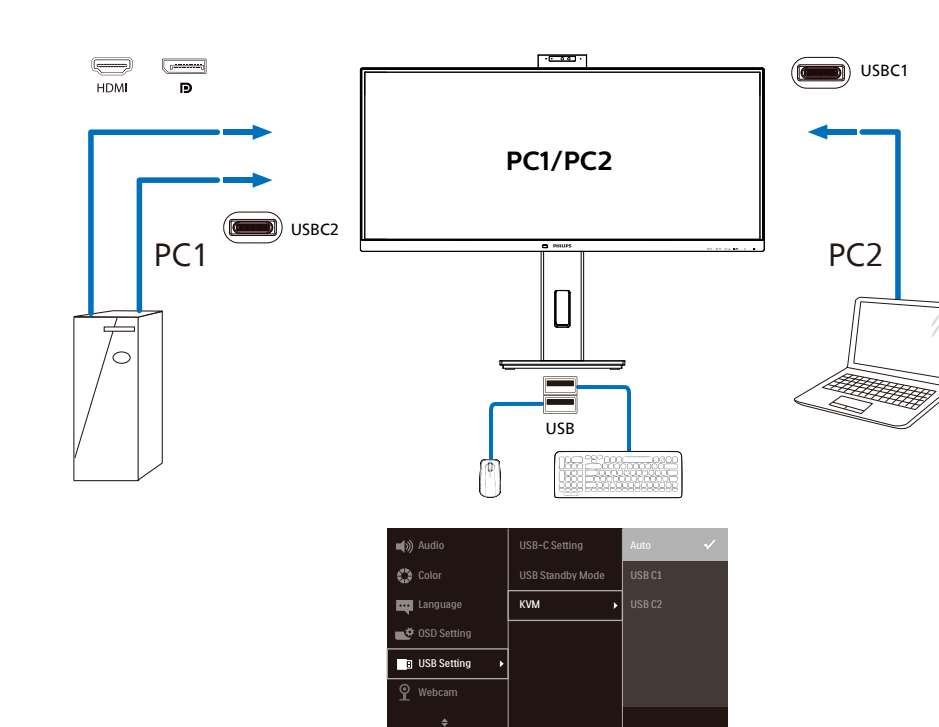
USB docking (USB C-C)



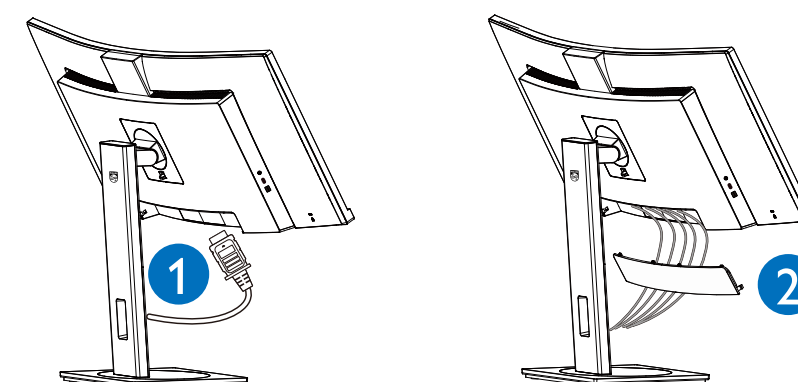
USB hub (USB A-C)



KVM



3



4

