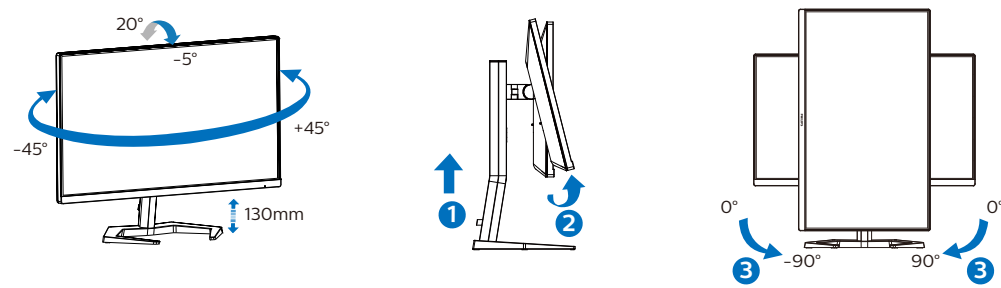


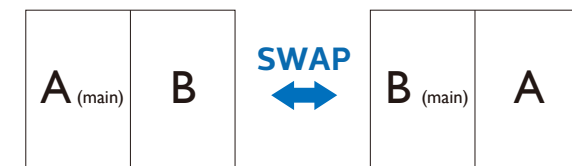
4



5



## PBP



(1x main, 1x sub)

MultiView	SUB SOURCE POSSIBILITY (x4)				
	Inputs	1 HDMI 2.0	2 HDMI 2.0	DisplayPort 1	DisplayPort 2
MAIN SOURCE (x4)	1 HDMI 2.0	●	●	●	●
	2 HDMI 2.0	●	●	●	●
	DisplayPort 1	●	●	●	●
	DisplayPort 2	●	●	●	●



Register your product and get support at  
[www.philips.com/support](http://www.philips.com/support)



FAQ

Software  
SmartControlUser  
Manual

Version: 27M1N5500Q1T

2021 © TOP Victory Investments Ltd. All rights reserved.

This product has been manufactured by and is sold under the responsibility of Top Victory Investments Ltd., and Top Victory Investments Ltd. is the warrantor in relation to this product.  
 Philips and the Philips Shield Emblem are registered trademarks of Koninklijke Philips N.V. and are used under license.

Specifications are subject to change without notice.

HDMI

The terms HDMI, HDMI High-Definition Multimedia Interface, and the HDMI Logo are trademarks or registered trademarks of HDMI Licensing Administrator, Inc.

[www.philips.com](http://www.philips.com)


Printed in China



H41G78S381330A

PHILIPS

Gaming Monitor

Momentum 5000

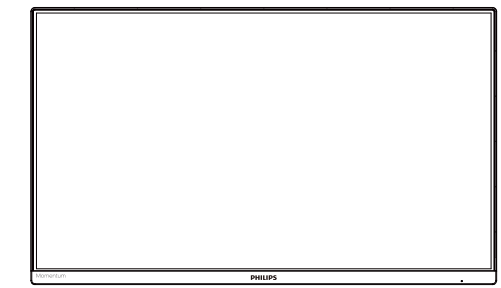


27M1N5500U

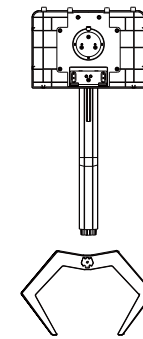
## Quick start

 Register your product and get support at [www.philips.com/welcome](http://www.philips.com/welcome)

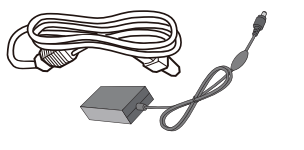
## Contents



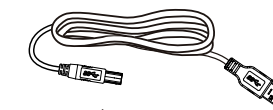
Quick start



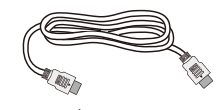
\*Earphone-Hang



AC/DC Adapter



\* USB A-B



\*HDMI

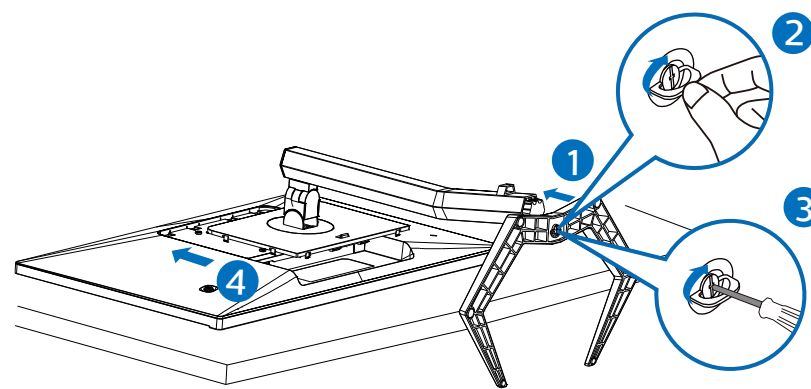


\*DP

\*Different according to region

Display design may differ from that illustrated

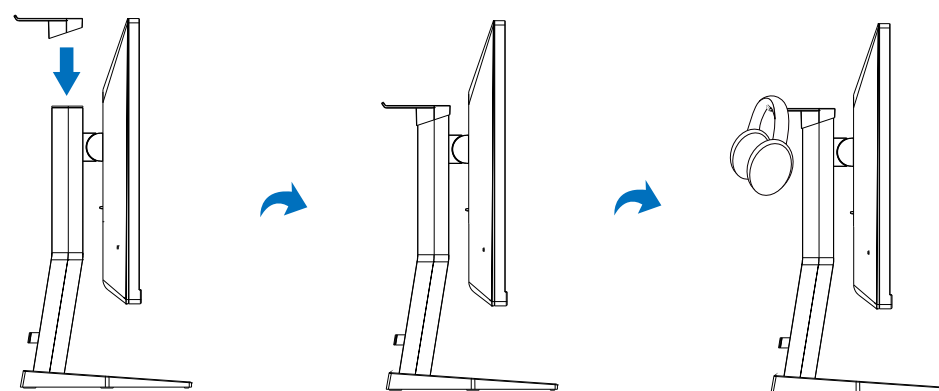
1



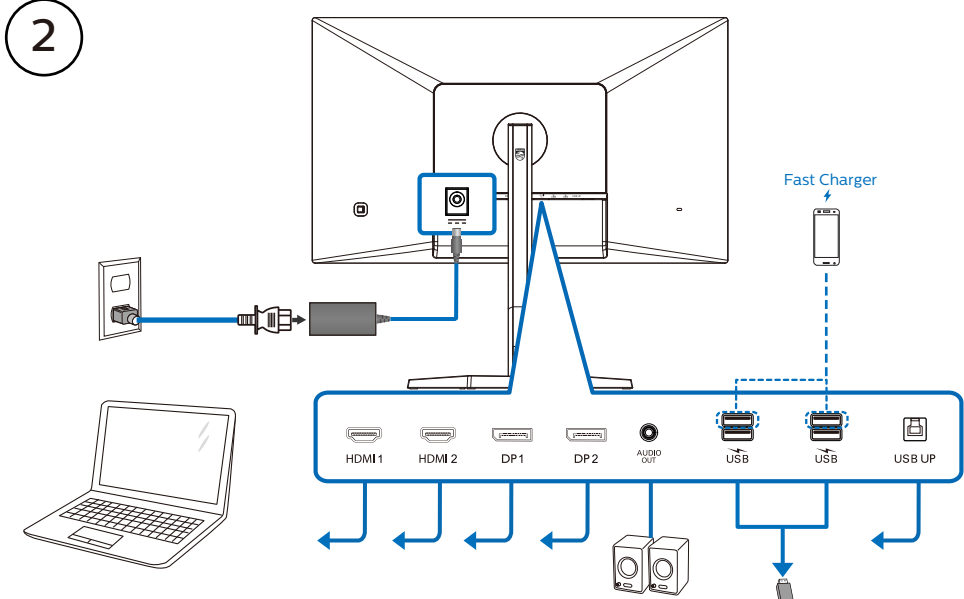
⚠ CAUTION: Place the monitor face down on a smooth surface.  
 Pay attention not to scratch or damage the screen.

2

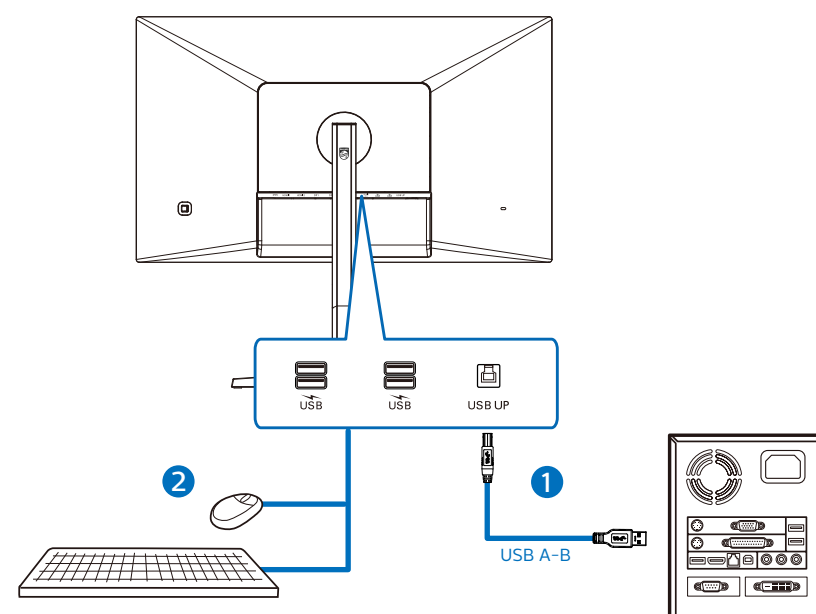
Earphone-Hang



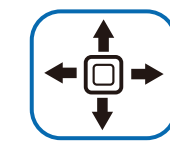
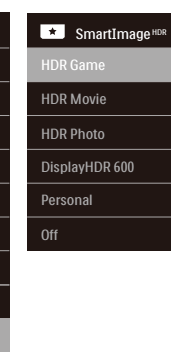
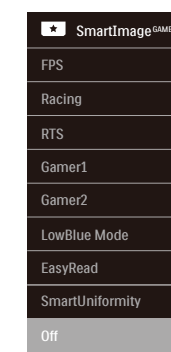
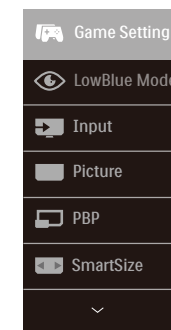
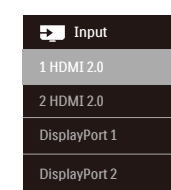
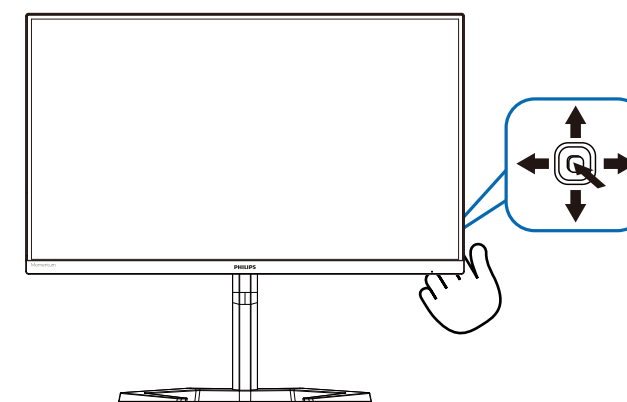
2



USB hub



3



Game Setting	Adaptive Sync	On
Crosshair	Off	
LowBlue Mode	Low Input Lag	On
SmartResponse	Off	
SmartFrame	Off	

Game Setting	Adaptive Sync	On
Crosshair	Off	
LowBlue Mode	Low Input Lag	On
SmartResponse	Off	
SmartFrame	Off	

Game Setting	Adaptive Sync	On
Crosshair	Off	
LowBlue Mode	Low Input Lag	On
SmartResponse	Off	
SmartFrame	Off	

Game Setting	Adaptive Sync	On
Crosshair	Off	
LowBlue Mode	Low Input Lag	On
SmartResponse	Off	
SmartFrame	Off	