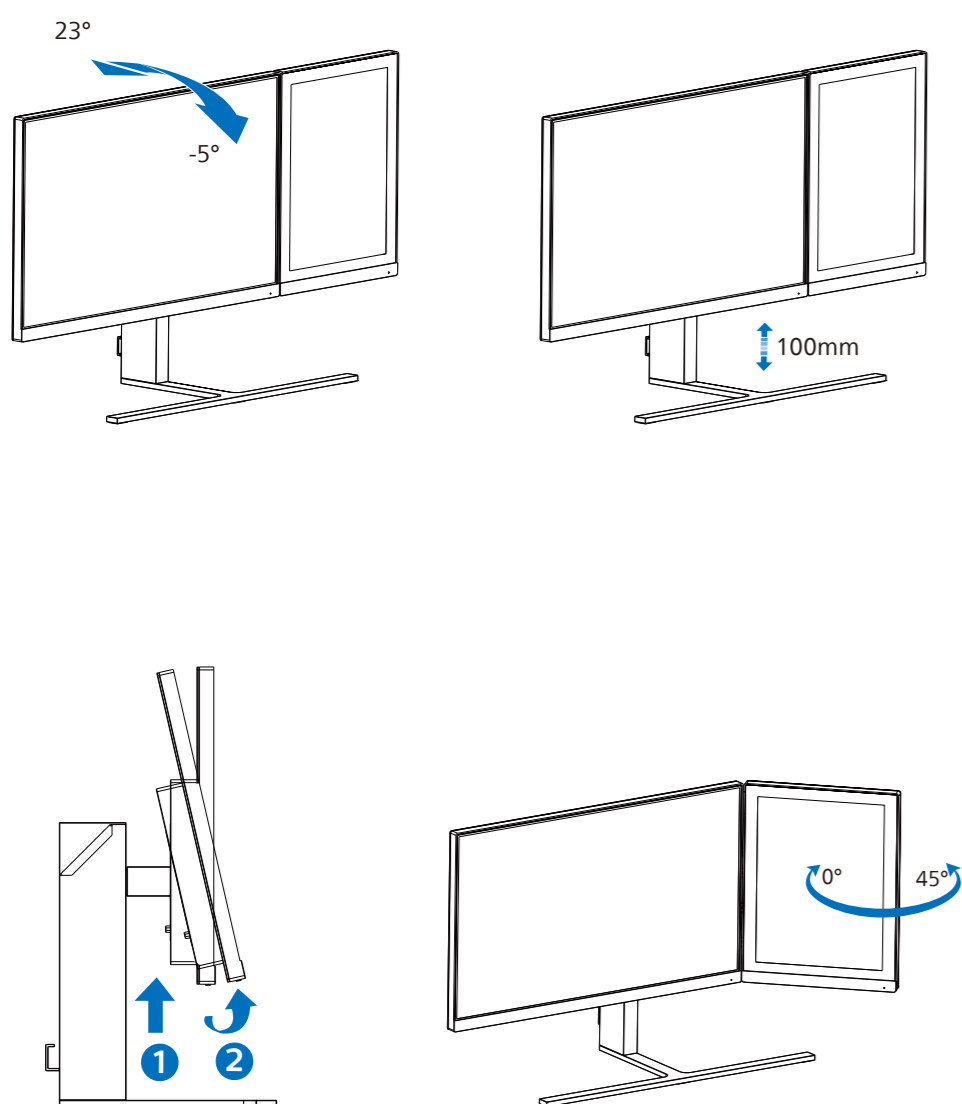
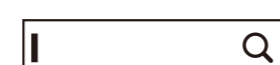


4



Register your product and get support at [www.philips.com/support](http://www.philips.com/support)



FAQ



Software SmartControl



User Manual

Version: M1124B1D5600Q1WWT  
2022 © TOP Victory Investments Ltd. All rights reserved.

This product has been manufactured by and is sold under the responsibility of Top Victory Investments Ltd., and Top Victory Investments Ltd. is the warrantor in relation to this product. Philips and the Philips Shield Emblem are registered trademarks of Koninklijke Philips N.V. and are used under license.

Specifications are subject to change without notice.

[www.philips.com](http://www.philips.com)



Printed in China



Q41G24M181368B

PHILIPS

Business Monitor

5000 Series

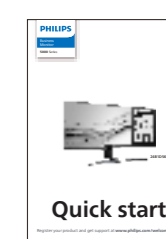
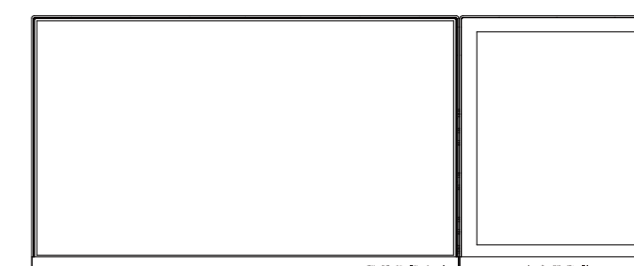


24B1D5600

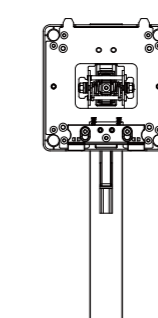
# Quick start

Register your product and get support at [www.philips.com/welcome](http://www.philips.com/welcome)

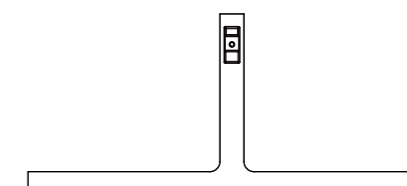
## Contents



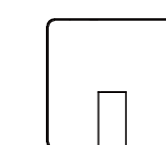
Quick start



AC/DC Adapter



\*DP



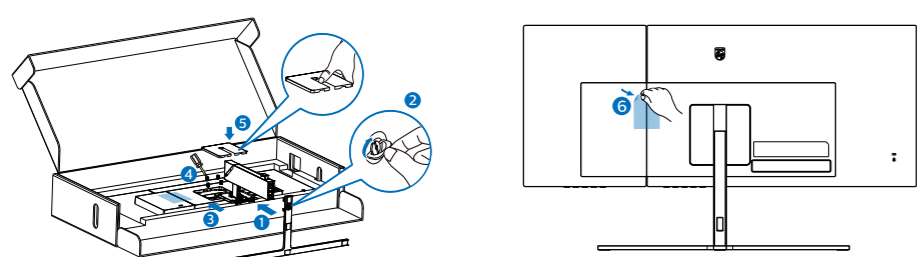
\*USB C-C/A



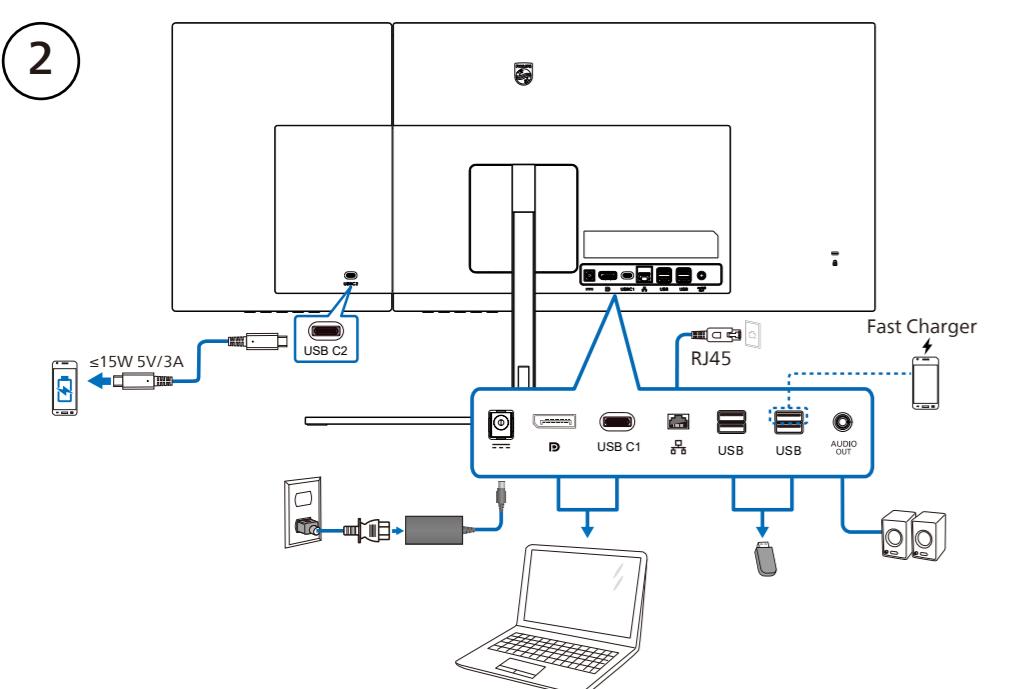
Screw and screwdriver  
M4-10 x 4

\*Different according to region  
Display design may differ from that illustrated

1

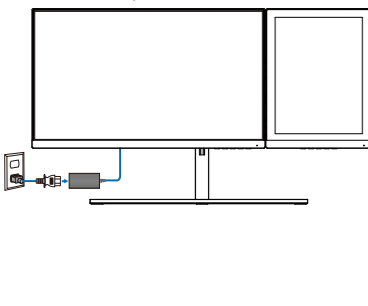


2

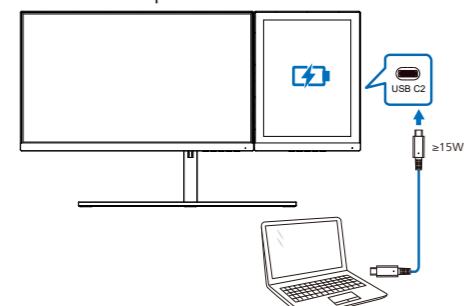


13.3" EPD  
Power Delivery

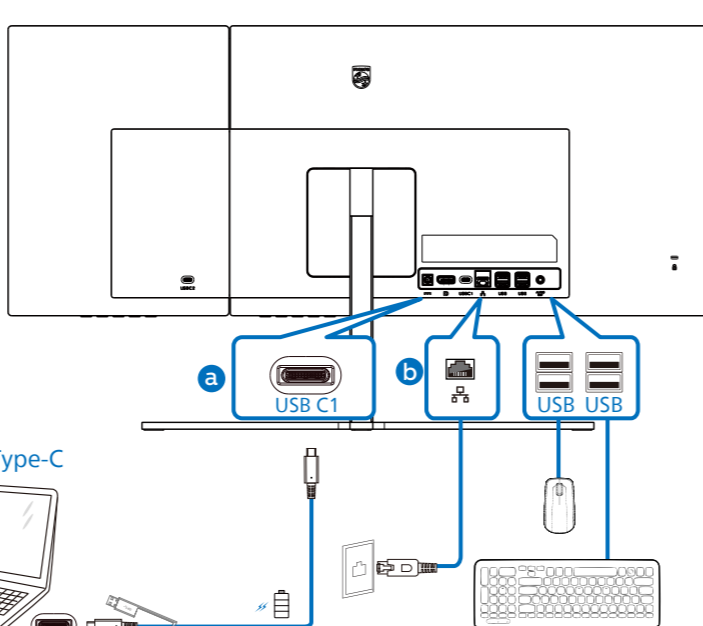
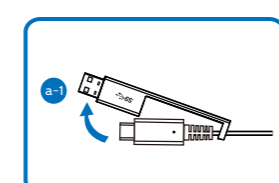
With Adapter



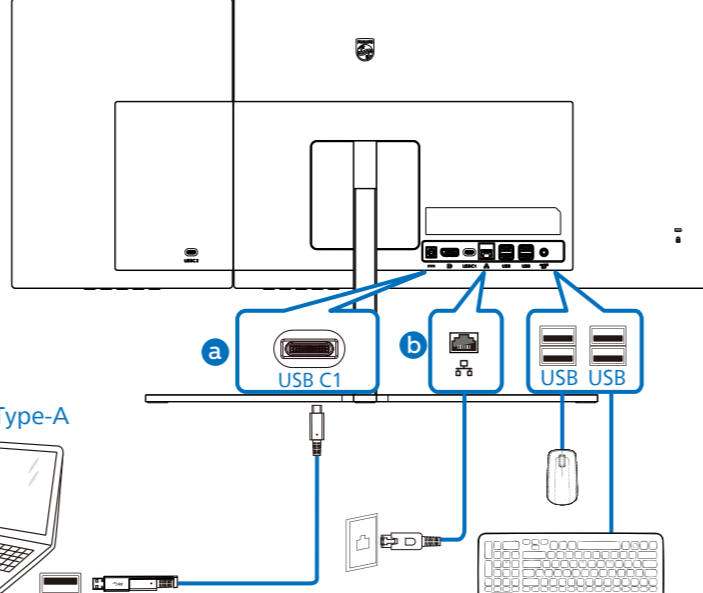
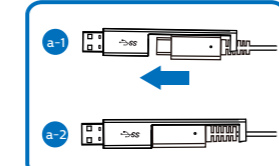
Without Adapter



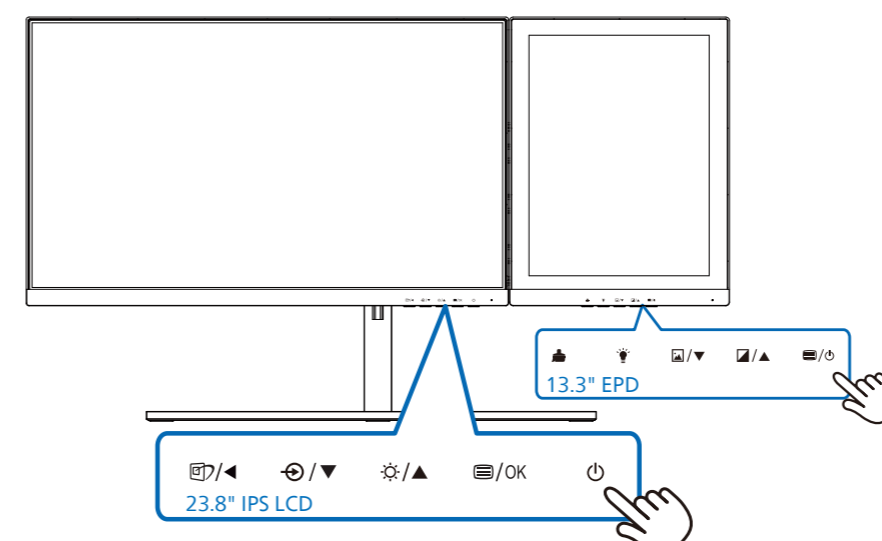
23.8" IPS LCD  
USB docking (USB C-C)



USB docking (USB A-C)



3



23.8" IPS LCD



13.3" EPD

