

GRAPHIC DEVELOPMENT

MMD

Product name

Project name

Project no.

Finishing

Scale

Size Speads

Size

Operator(s)

Date amended

VERSION No.

APPROVAL

QC Lithographer

Product Manager

Date Check

ARTWORK DOCUMENT

Paper

Numbers of colours

Spotcolor

Aftertreatment

Cropping

Coating

Varnishing

Embossing

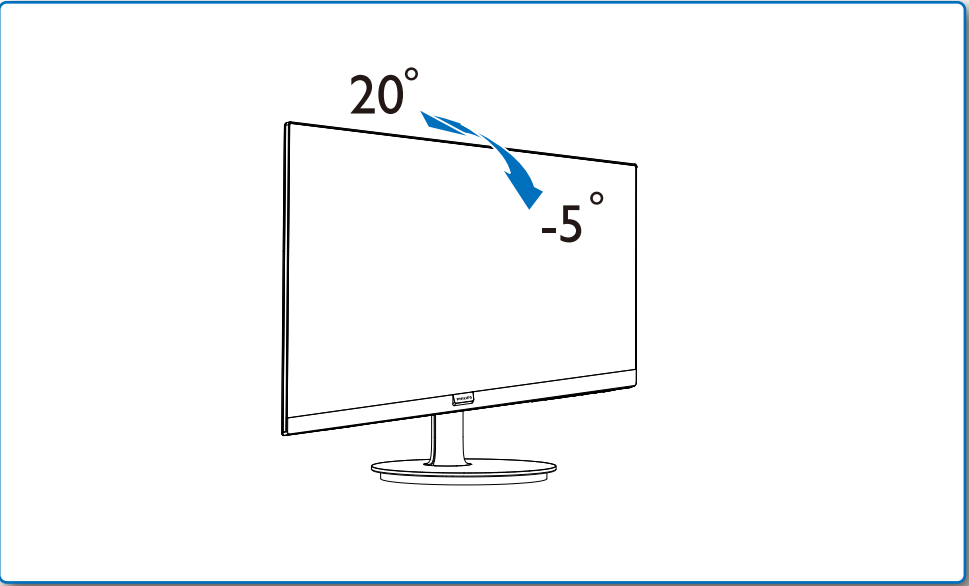
Cutterguide

Die-cut

Binding

Glue

4



- EN

Need help?

Online help: www.philips.com/support
- SC

需要帮助?

在线帮助: www.philips.com/support
- FR

Besoin d'Aide ?

Aide en ligne: www.philips.com/support
- ES

¿Necesita ayuda?

Ayuda en línea: www.philips.com/support
- DE

Benötigen Sie Hilfe?

Online-Hilfe: www.philips.com/support
- IT

Avete bisogno di aiuto?

Guida in linea: www.philips.com/support
- BR

Precisa ajuda?

Ajuda online: www.philips.com/support
- KO

도움이 필요하십니까?

온라인 도움말: www.philips.com/support
- UA

Потребуєте допомоги?

Підтримка он-лайн: www.philips.com/support
- RU

Нужна помощь?

Интерактивная справка: www.philips.com/support
- TR

Yardıma ihtiyacınız var mı?

Online yardım: www.philips.com/support
- HI

क्या सहायता की जरूरत है?

ऑनलाइन सहायता: www.philips.com/support
- AR

هل تريد المساعدة؟

www.philips.com/support للمساعدة عبر الإنترنت
- JP

ヘルプが必要ですか?

オンラインヘルプ: www.philips.com/support

Version: M824xVQ1T
2019 © TOP Victory Investment Ltd. All rights reserved.

This product has been manufactured by and is sold under the responsibility of Top Victory Investments Ltd., and Top Victory Investments Ltd. is the warrantor in relation to this product. Philips and the Philips Shield Emblem are registered trademarks of Koninklijke Philips N.V. and are used under license.

Specifications are subject to change without notice.

www.philips.com

HDMI

HDMI trademark and related patents on technologies belong to their respective owners.



Printed in China



Q41G24M1813----

PHILIPS

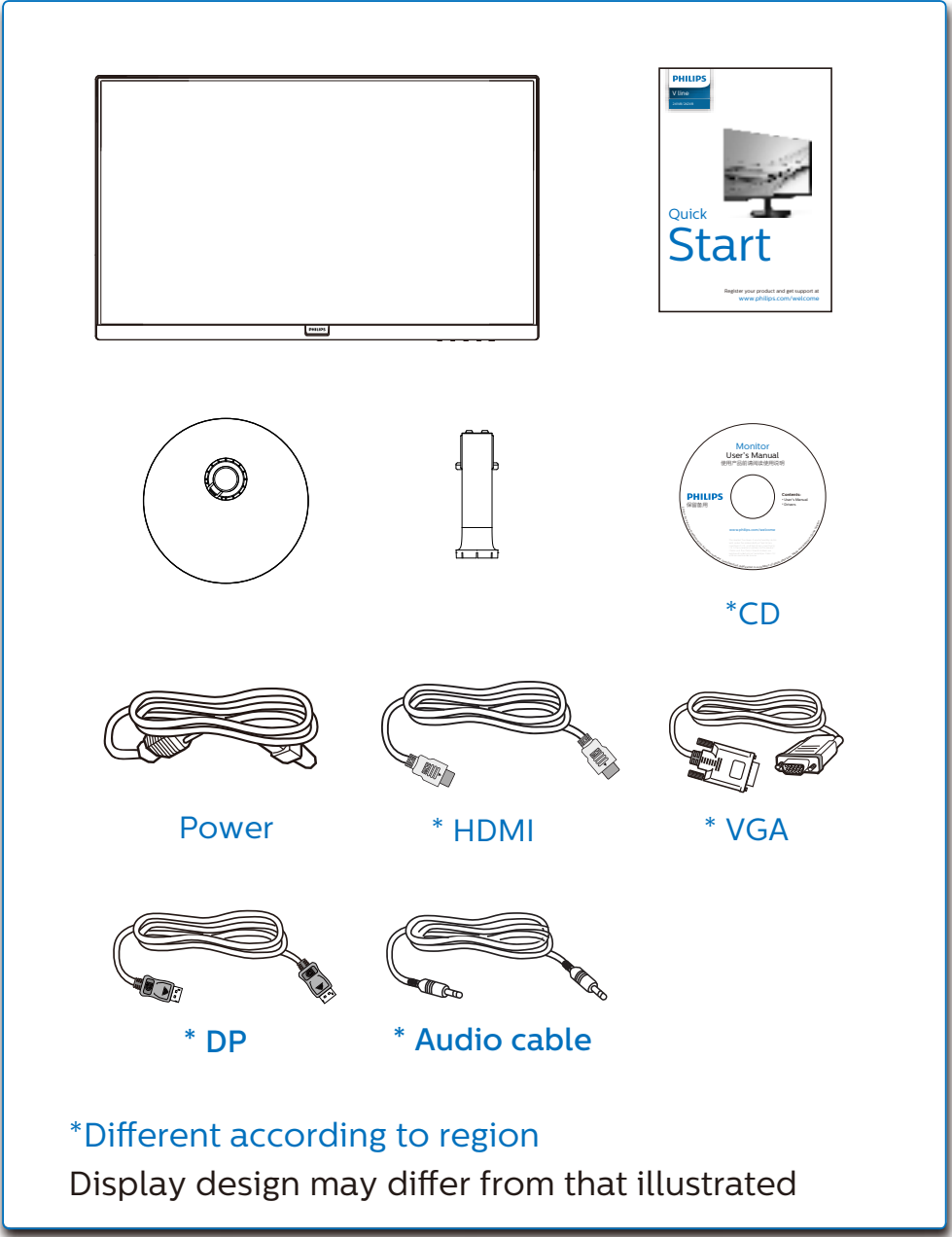
V line

241V8/242V8



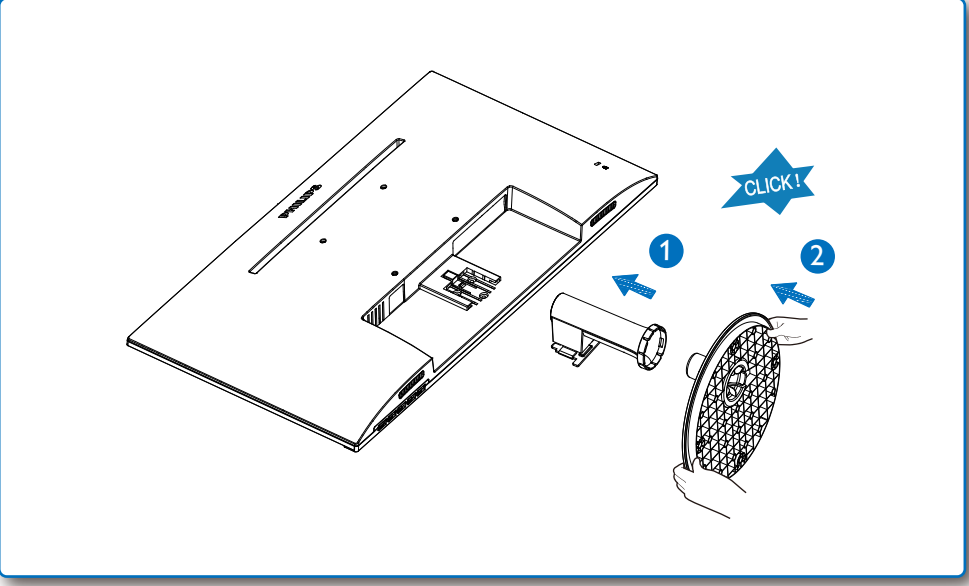
Quick
Start

Register your product and get support at
www.philips.com/welcome

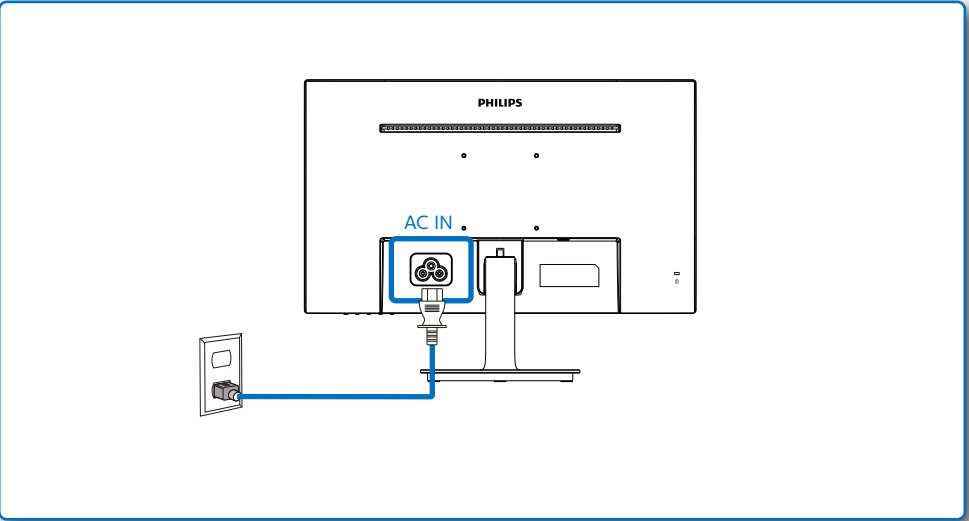


*Different according to region
Display design may differ from that illustrated

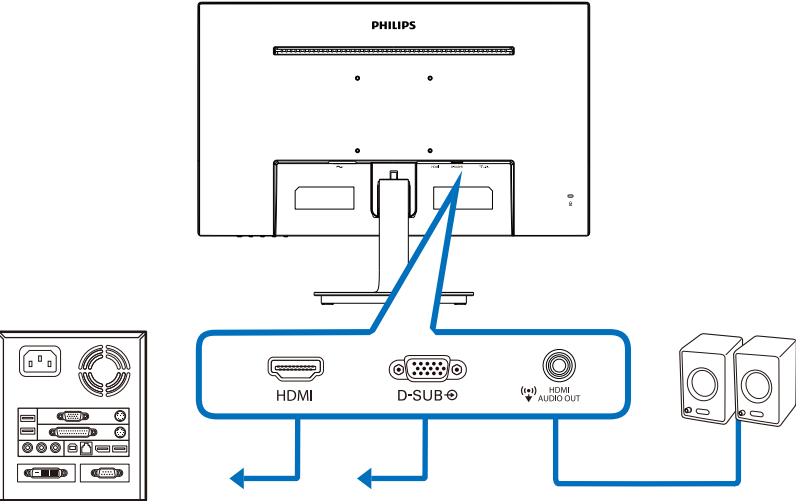
1



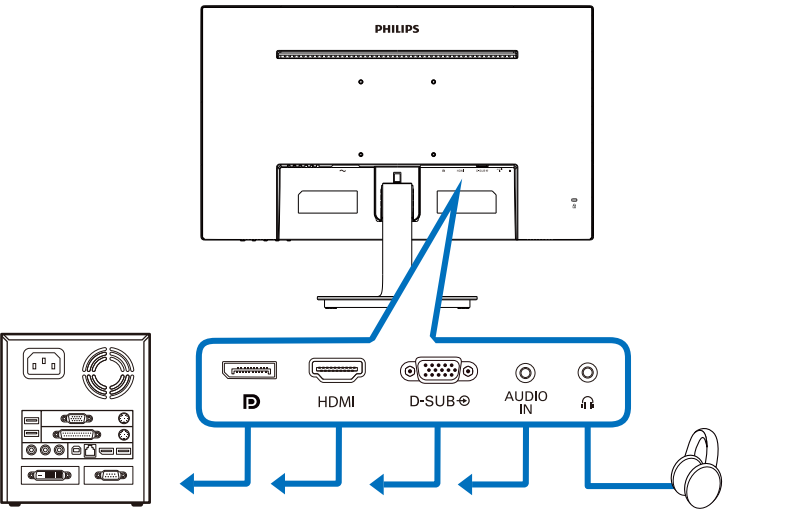
2



241V8



242V8



3

