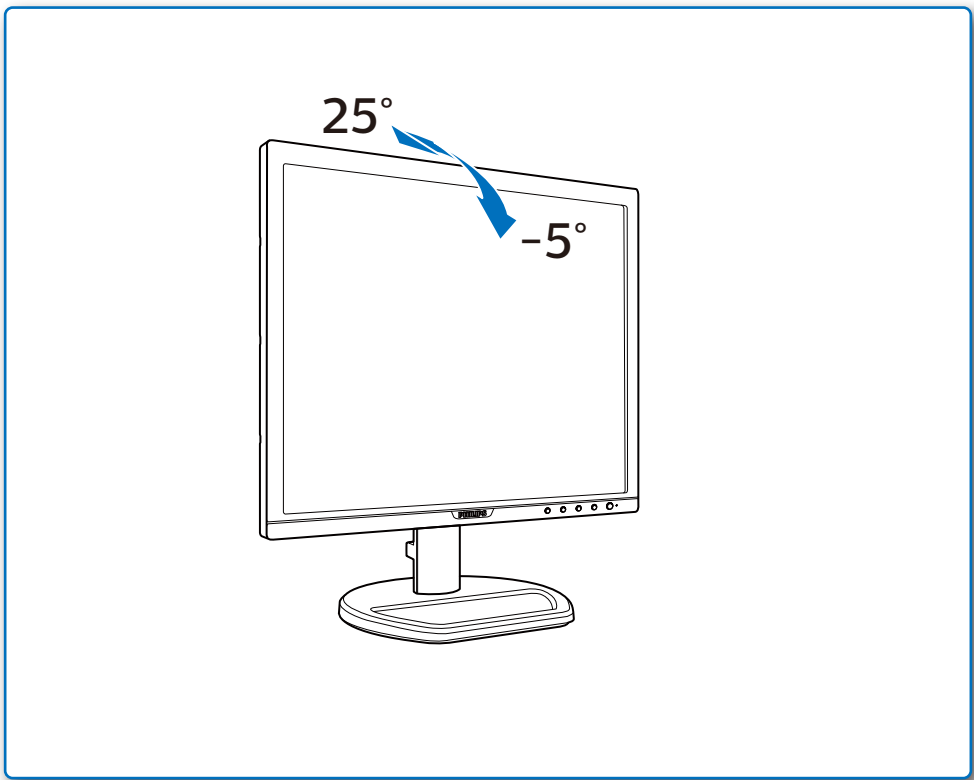


|                                      |  |     |
|--------------------------------------|--|-----|
| GRAPHIC DEVELOPMENT                  |  | MMD |
| Product name                         |  |     |
| Project name QSG                     |  |     |
| Project no.                          |  |     |
| Finishing Folded sheet               |  |     |
| Scale 1:1                            |  |     |
| Size Speads 594 (W) x 210 (H) mm     |  |     |
| Size 148.5 (W) x 210 (H) mm          |  |     |
| Operator(s)                          |  |     |
| Date amended Feb. 27, 2018           |  |     |
| VERSION No. 13                       |  |     |
| APPROVAL                             |  |     |
| QC Lithographer                      |  |     |
| Product Manager                      |  |     |
| Date Check                           |  |     |
| ARTWORK DOCUMENT                     |  |     |
| Paper 80gsm White, woodfree coated   |  |     |
| Numbers of colours 2C+2C             |  |     |
| Pantone 300C                         |  |     |
| Spotcolor                            |  |     |
| Aftertreatment                       |  |     |
| <input type="checkbox"/> Cropping    |  |     |
| <input type="checkbox"/> Coating     |  |     |
| <input type="checkbox"/> Varnishing  |  |     |
| <input type="checkbox"/> Embossing   |  |     |
| <input type="checkbox"/> Cutterguide |  |     |
| <input type="checkbox"/> Die-cut     |  |     |
| <input type="checkbox"/> Binding     |  |     |
| <input type="checkbox"/> Glue        |  |     |

4



Need help?

Online help: [www.philips.com/support](http://www.philips.com/support)

需要帮助?

在线帮助: [www.philips.com/support](http://www.philips.com/support)

Besoin d'Aide ?

Aide en ligne: [www.philips.com/support](http://www.philips.com/support)

¿Necesita ayuda?

Ayuda en línea: [www.philips.com/support](http://www.philips.com/support)

Benötigen Sie Hilfe?

Online-Hilfe: [www.philips.com/support](http://www.philips.com/support)

Avete bisogno di aiuto?

Guida in linea: [www.philips.com/support](http://www.philips.com/support)

Precisa ajuda?

Ajuda online: [www.philips.com/support](http://www.philips.com/support)

도움이 필요하십니까?

온라인 도움말: [www.philips.com/support](http://www.philips.com/support)

Потребуйте допомоги?

Підтримка он-лайн: [www.philips.com/support](http://www.philips.com/support)

Нужна помощь?

Интерактивная справка:  
[www.philips.com/support](http://www.philips.com/support)

Yardıma ihtiyacınız var mı?

Online yardım: [www.philips.com/support](http://www.philips.com/support)

क्या सहायता की जरूरत है?

ऑनलाईन सहायता: [www.philips.com/support](http://www.philips.com/support)

هل تريد المساعدة؟

المساعدة عبر الإنترنت: [www.philips.com/support](http://www.philips.com/support)

ヘルプが必要ですか?

オンラインヘルプ: [www.philips.com/support](http://www.philips.com/support)

Version: M9170SQ1T

2019 © TOP Victory Investment Ltd. All rights reserved.

This product has been manufactured by and is sold under the responsibility of Top Victory Investments Ltd., and Top Victory Investments Ltd. is the warrantor in relation to this product. Philips and the Philips Shield Emblem are registered trademarks of Koninklijke Philips N.V. and are used under license.

Specifications are subject to change without notice.

[www.philips.com](http://www.philips.com)



Printed in China



PHILIPS

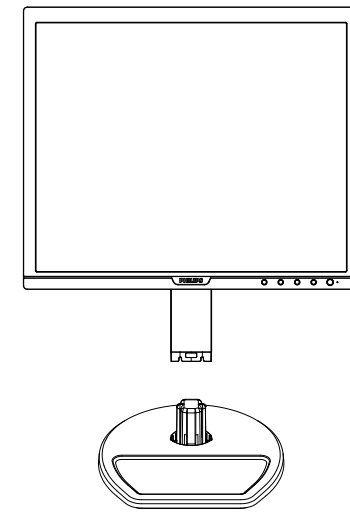
S line

170S9/170S9A

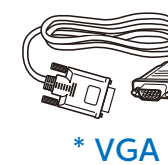


# Quick Start

Register your product and get support at  
[www.philips.com/welcome](http://www.philips.com/welcome)



Power



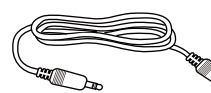
\* VGA



\* CD



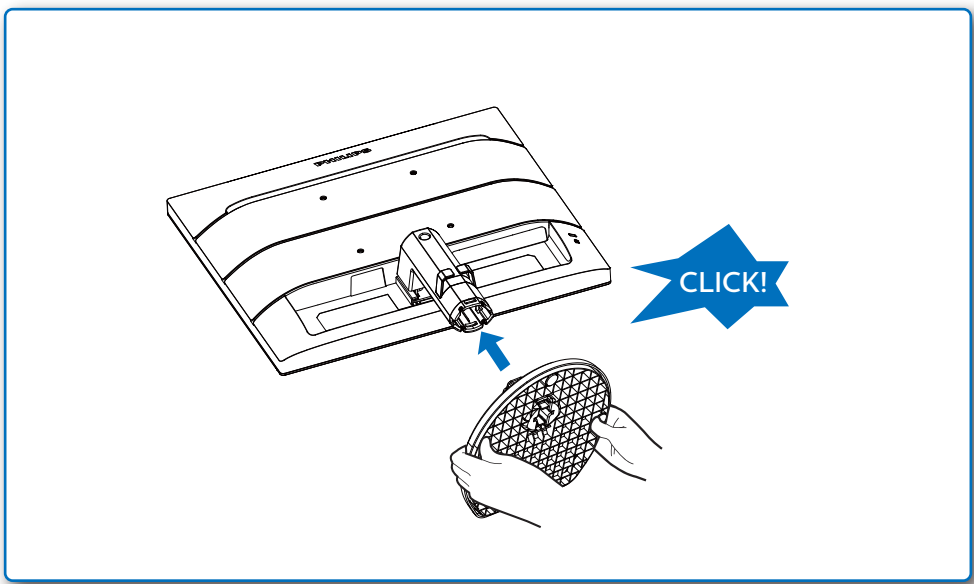
\* DVI



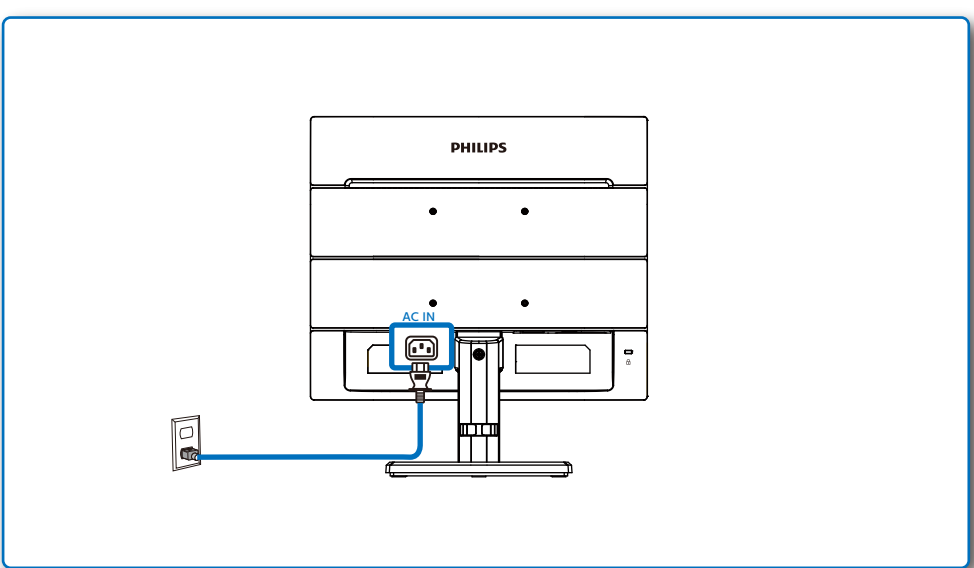
\* Audio

\* Different according to region.  
Display design may differ from those illustrated.

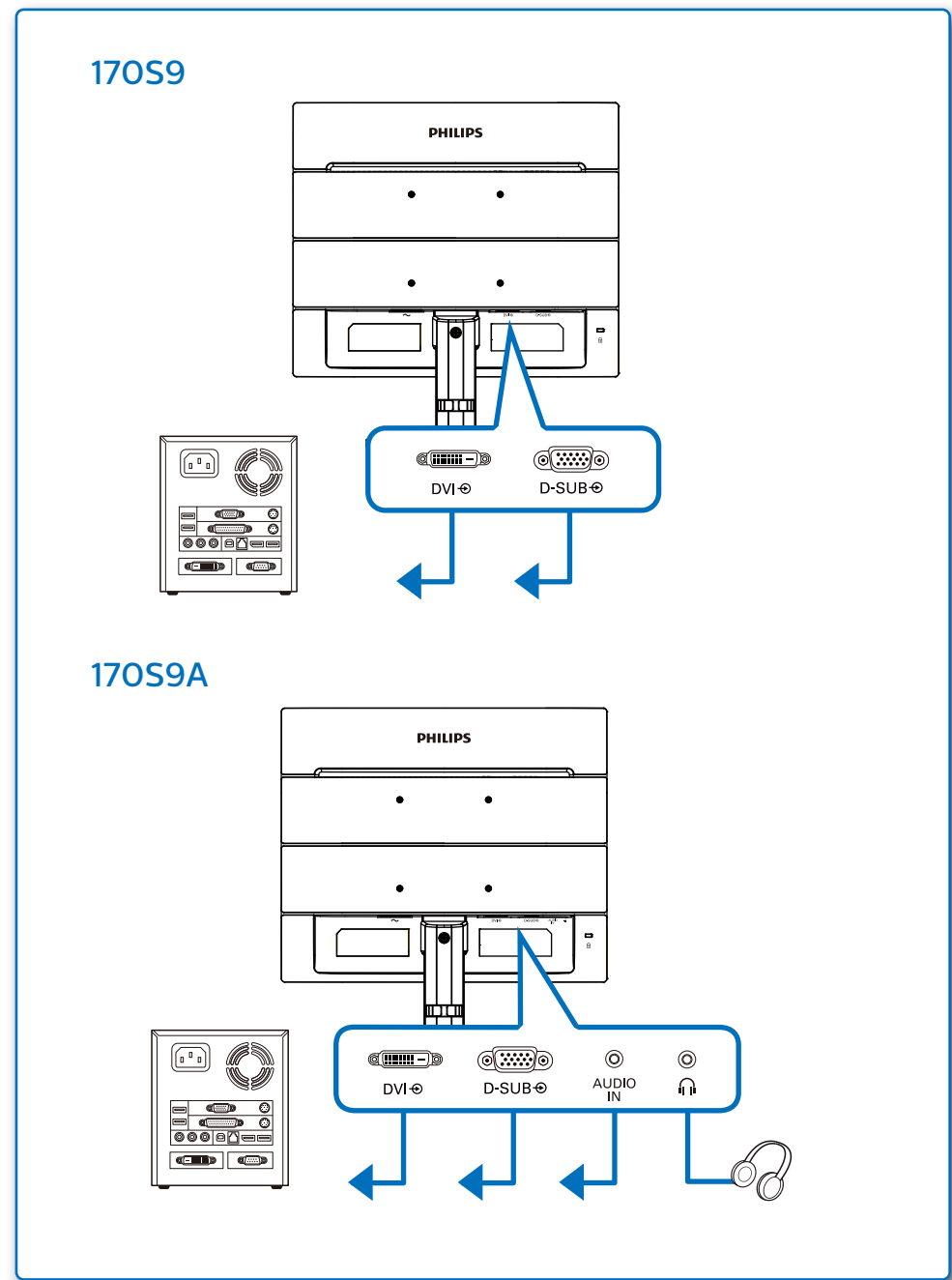
1



2



2



3

