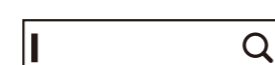


Register your product and get support at www.philips.com/support



FAQ



Software SmartControl



User Manual

Version: M1113B1K3300Q1WWT
2021 © TOP Victory Investments Ltd. All rights reserved.

This product has been manufactured by and is sold under the responsibility of Top Victory Investments Ltd., and Top Victory Investments Ltd. is the warrantor in relation to this product. Philips and the Philips Shield Emblem are registered trademarks of Koninklijke Philips N.V. and are used under license.

Specifications are subject to change without notice.

HDMI

The terms HDMI, HDMI High-Definition Multimedia Interface, HDMI Trade Dress and the HDMI Logos are trademarks or registered trademarks of HDMI Licensing Administrator, Inc.

www.philips.com

Energy Labelling

13B1K3300



Printed in China



Q41G13M181301C

PHILIPS

Business Monitor

3000 Series

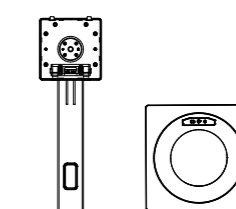
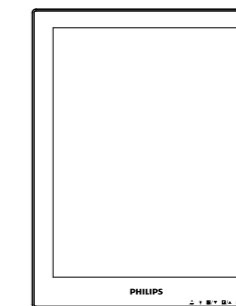


13B1K3300

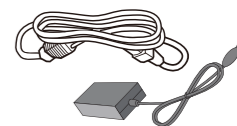
Quick start

Register your product and get support at www.philips.com/welcome

Contents



Quick start



AC/DC Adapter



*HDMI



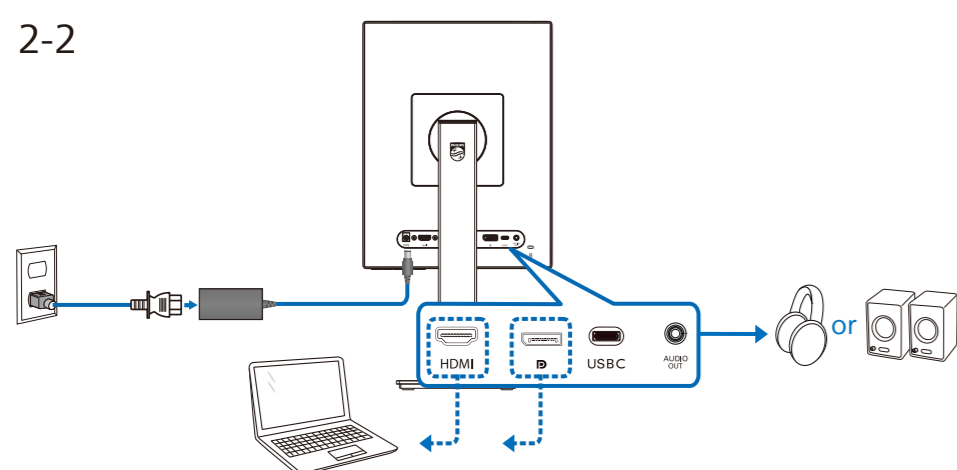
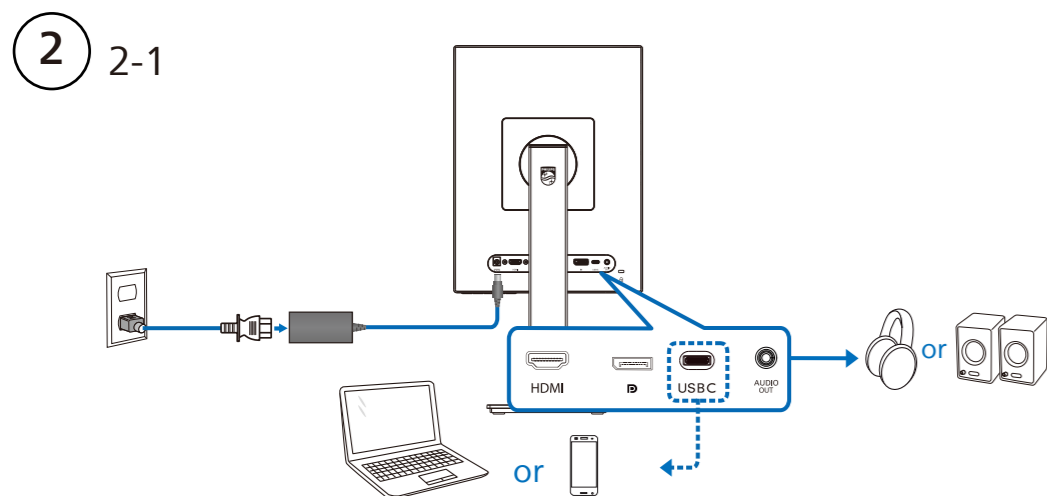
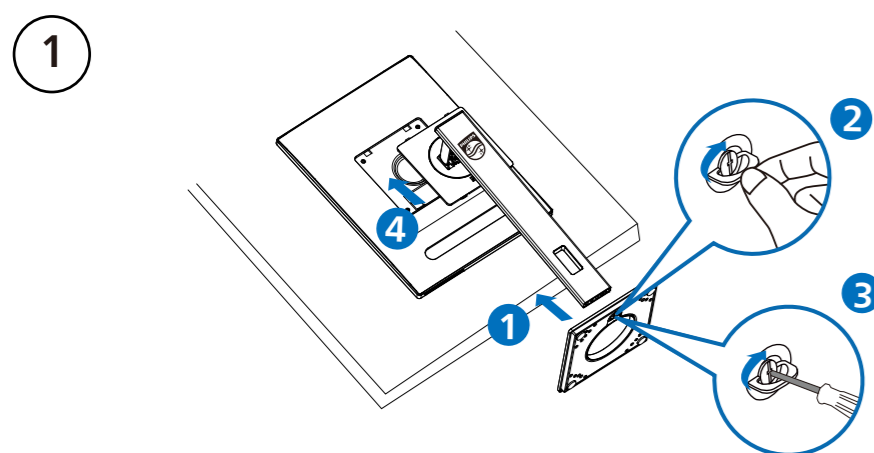
*DP



*USB C-C

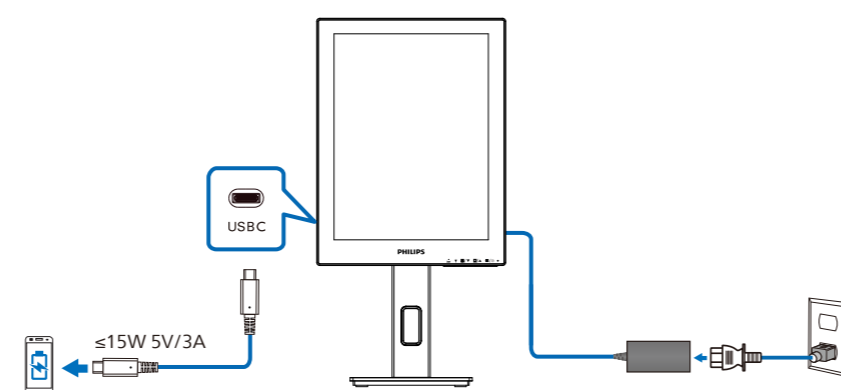
*Different according to region

Display design may differ from that illustrated

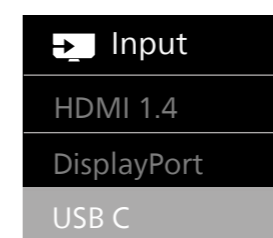
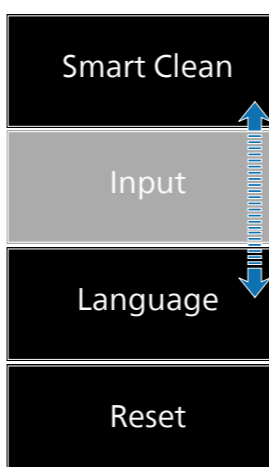
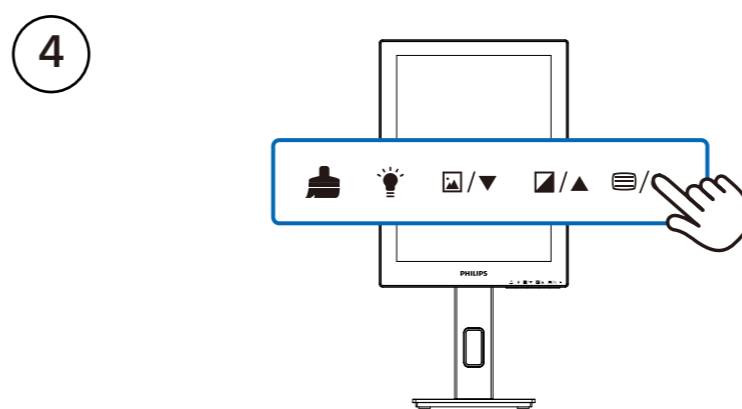
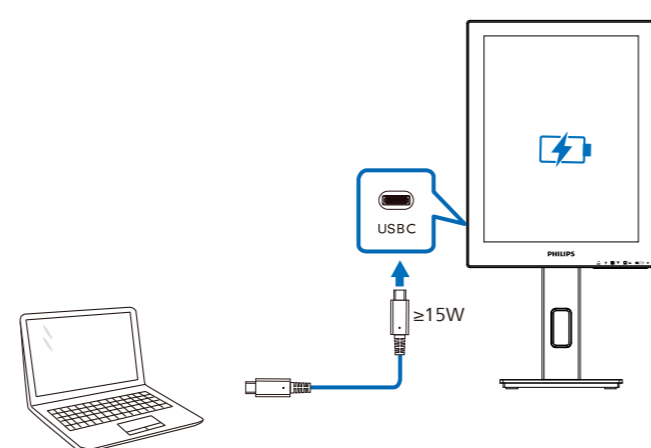


3 Power Delivery

3-1 With Adapter



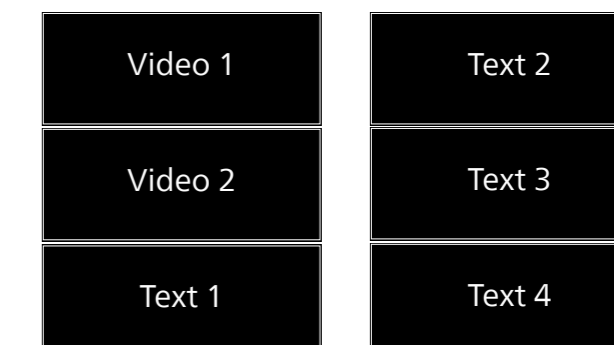
3-2 Without Adapter



Clear image sticking



Image mode presets



Gray scale levels



Adjust parameters of selection