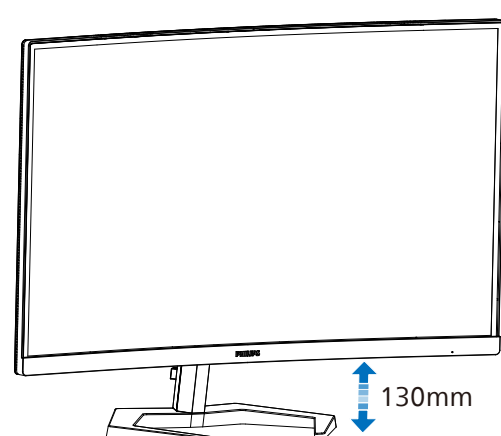
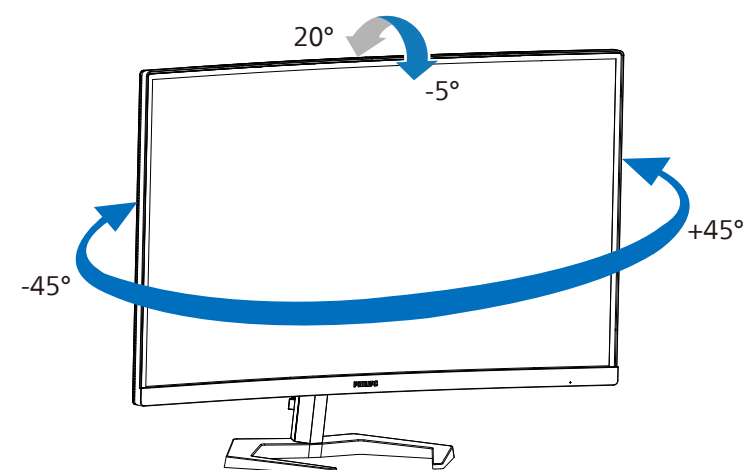


4



Register your product and get support at [www.philips.com/support](http://www.philips.com/support)



FAQ

Software  
SmartControlUser  
Manual

Version: 32M1C5200Q1T

2022 © TOP Victory Investments Ltd. All rights reserved.

This product has been manufactured by and is sold under the responsibility of Top Victory Investments Ltd., and Top Victory Investments Ltd. is the warrantor in relation to this product. Philips and the Philips Shield Emblem are registered trademarks of Koninklijke Philips N.V. and are used under license.

Specifications are subject to change without notice.

**HDMI**

The Adopted Trademarks HDMI, HDMI High Definition Multimedia Interface, and the HDMI Logo are trademarks or registered trademarks of HDMI Licensing Administrator, Inc. in the United States and other countries.

[www.philips.com](http://www.philips.com)Energy Labelling  
32M1C5200W

Printed in China



Q41G32M1813B11

**PHILIPS**Curved Gaming  
Monitor

Momentum 5000

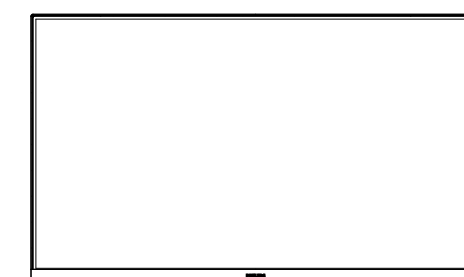


32M1C5200W

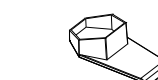
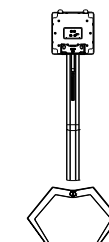
# Quick start

Register your product and get support at [www.philips.com/welcome](http://www.philips.com/welcome)

## Contents



Quick start



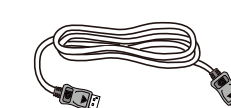
\*Earphone-Hang



Power



\*HDMI

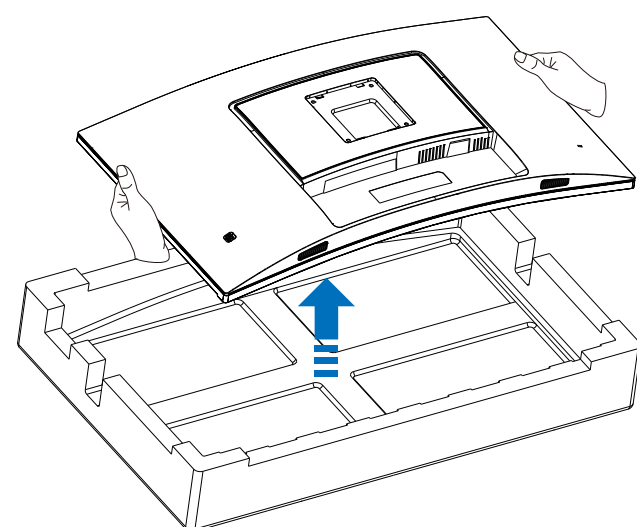
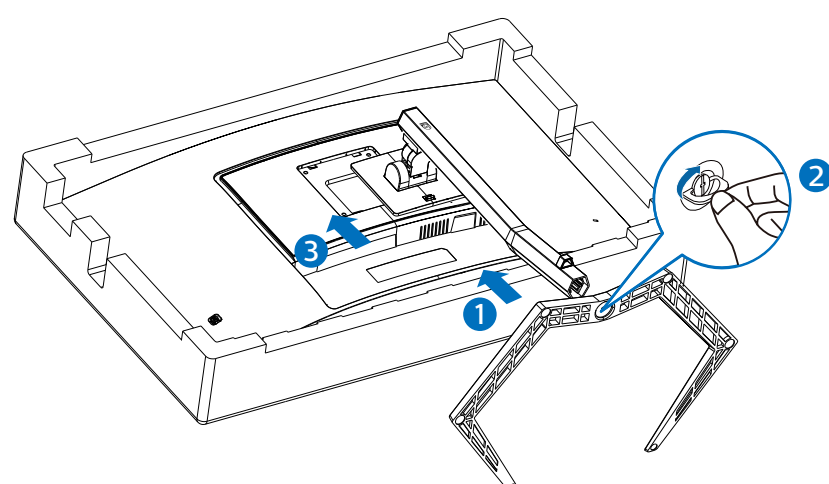


\*DP

\*Different according to region

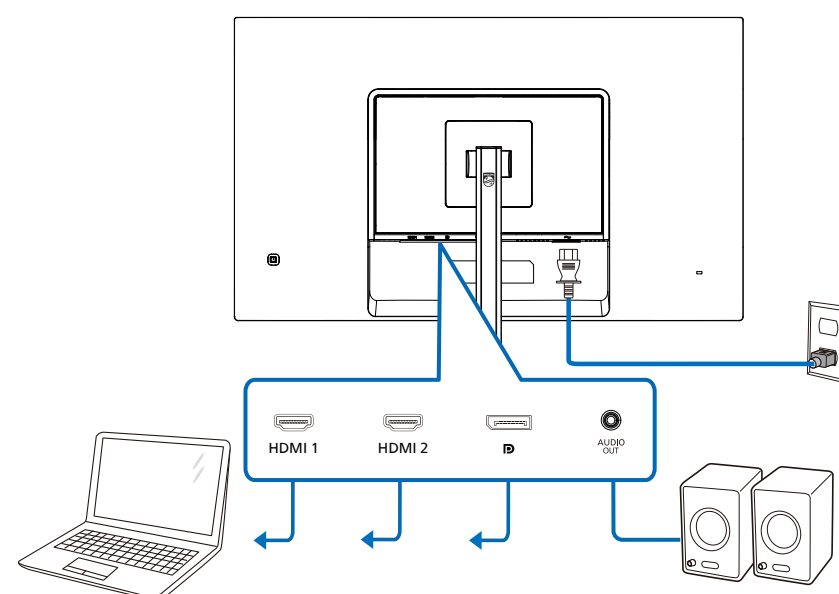
Display design may differ from that illustrated

1

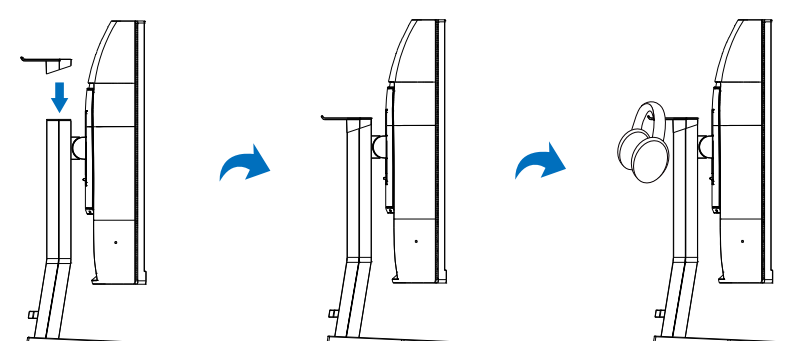


▲ CAUTION: Place the monitor face down on a smooth surface. Pay attention not to scratch or damage the screen.

2



Earphone-Hang



3

