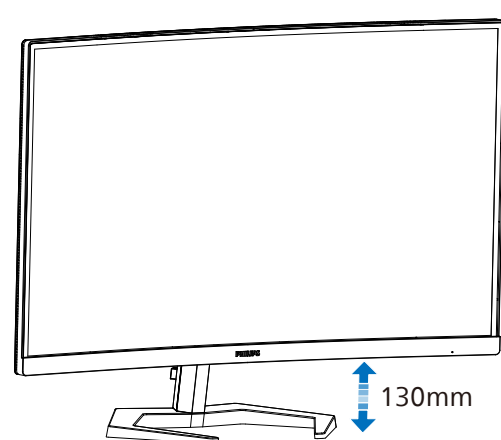
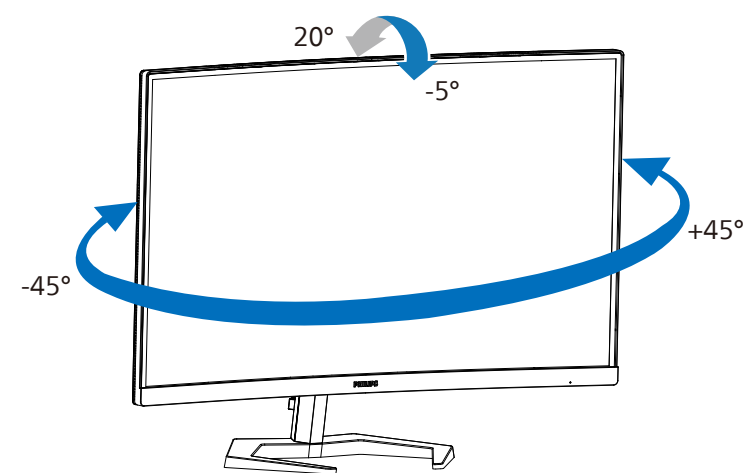
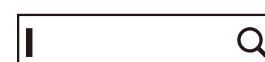


4



Register your product and get support at
www.philips.com/support



FAQ

Software
SmartControlUser
Manual

Version: 32M1C5200Q1T

2022 © TOP Victory Investments Ltd. All rights reserved.

This product has been manufactured by and is sold under the responsibility of Top Victory Investments Ltd., and Top Victory Investments Ltd. is the warrantor in relation to this product. Philips and the Philips Shield Emblem are registered trademarks of Koninklijke Philips N.V. and are used under license.

Specifications are subject to change without notice.

HDMI®

The Adopted Trademarks HDMI, HDMI High Definition Multimedia Interface, and the HDMI Logo are trademarks or registered trademarks of HDMI Licensing Administrator, Inc. in the United States and other countries.

www.philips.com

Printed in China



Q41G32M1813A11

PHILIPSCurved Gaming
Monitor

Momentum 5000

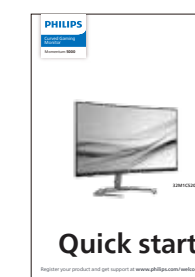
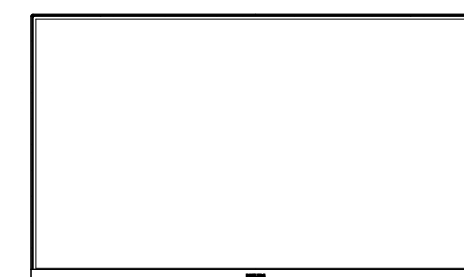


32M1C5200W

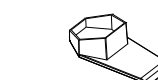
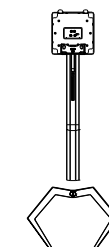
Quick start

Register your product and get support at www.philips.com/welcome

Contents



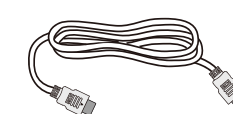
Quick start



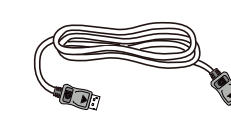
*Earphone-Hang



Power



*HDMI

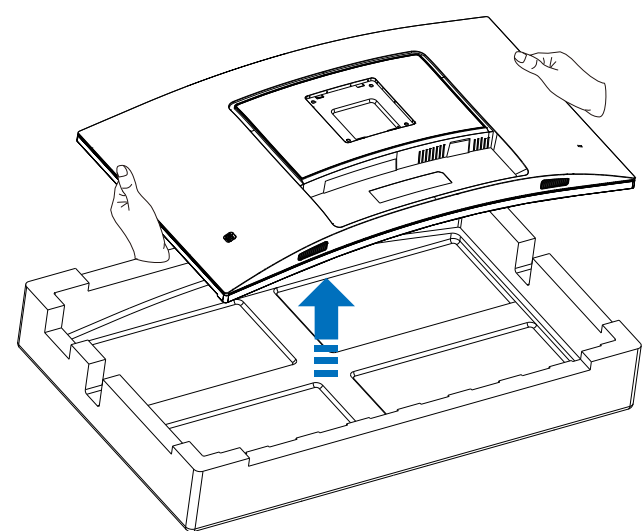
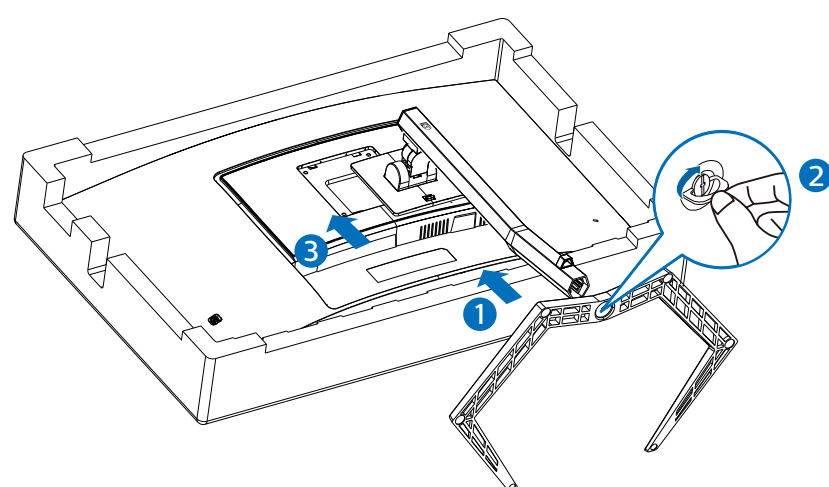


*DP

*Different according to region

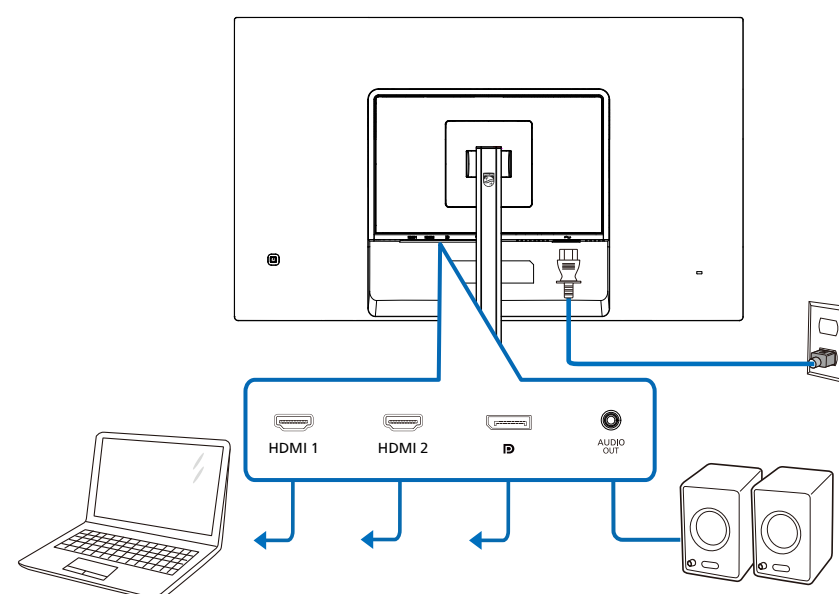
Display design may differ from that illustrated

1

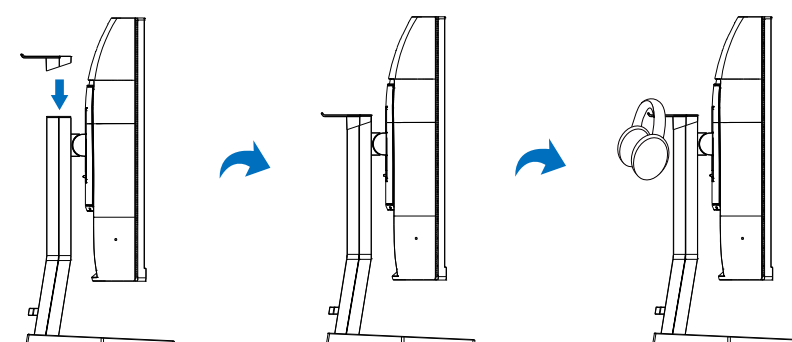


▲ CAUTION: Place the monitor face down on a smooth surface. Pay attention not to scratch or damage the screen.

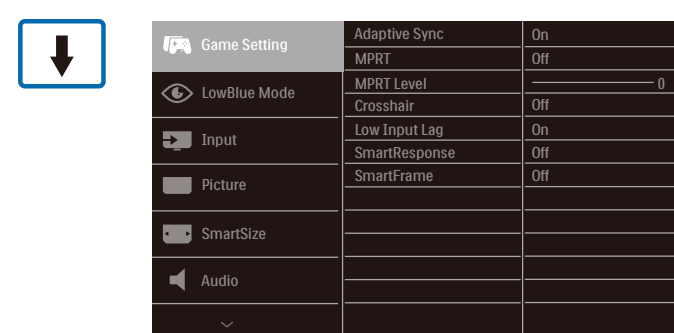
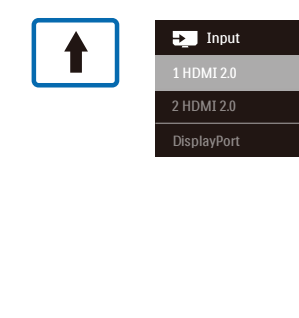
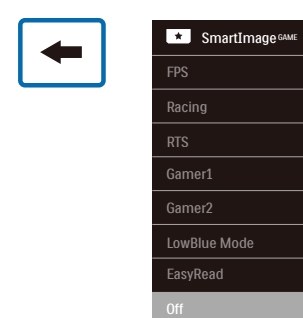
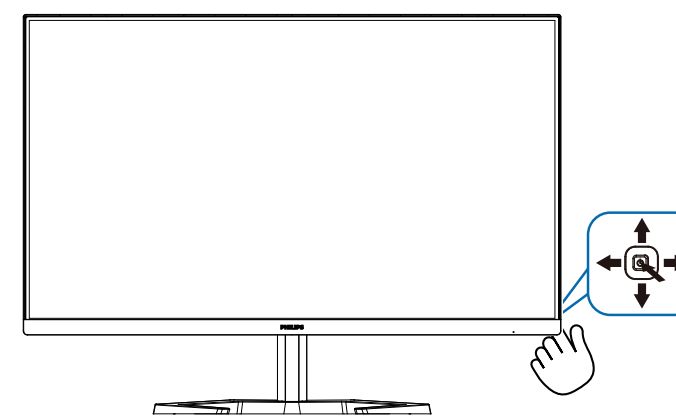
2



Earphone-Hang



3



Game Setting	Adaptive Sync	On
MPRT	MPRT Level	Off
LowBlue Mode	Crosshair	0
Input	Low Input Lag	On
Picture	SmartResponse	Off
SmartSize	SmartFrame	Off
Audio		



Game Setting	Adaptive Sync	On
MPRT	MPRT Level	Off
LowBlue Mode	Crosshair	0
Input	Low Input Lag	On
Picture	SmartResponse	Off
SmartSize	SmartFrame	Off
Audio		



Game Setting	Adaptive Sync	On
MPRT	MPRT Level	Off
LowBlue Mode	Crosshair	0
Input	Low Input Lag	On
Picture	SmartResponse	Off
SmartSize	SmartFrame	Off
Audio		



Game Setting	Adaptive Sync	On
MPRT	MPRT Level	Off
LowBlue Mode	Crosshair	0
Input	Low Input Lag	On
Picture	SmartResponse	Off
SmartSize	SmartFrame	Off
Audio		