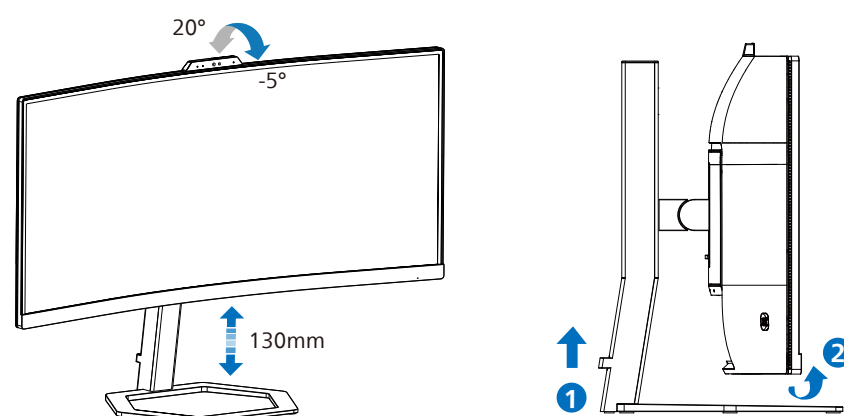
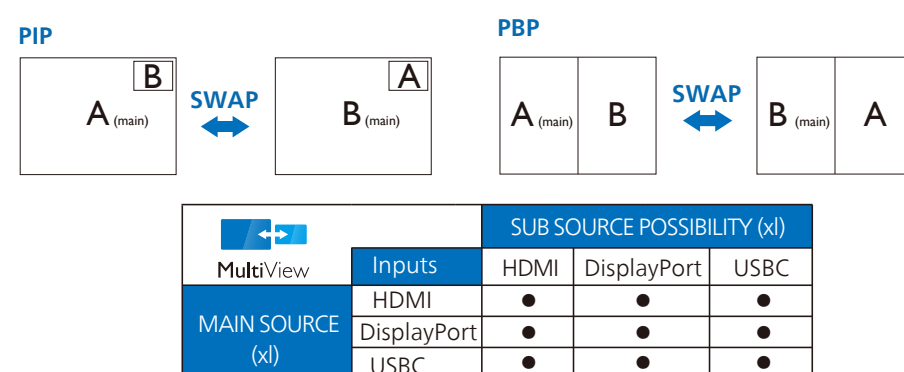


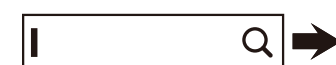
4



5



Register your product and get support at
www.philips.com/support



FAQ

Software
SmartControlUser
Manual

Version: 34E1C5600HQ1T

2022 © TOP Victory Investments Ltd. All rights reserved.

This product has been manufactured by and is sold under the responsibility of Top Victory Investments Ltd., and Top Victory Investments Ltd. is the warrantor in relation to this product. Philips and the Philips Shield Emblem are registered trademarks of Koninklijke Philips N.V. and are used under license.

Specifications are subject to change without notice.

HDMI

The terms HDMI, HDMI High-Definition Multimedia Interface, and the HDMI Logo are trademarks or registered trademarks of HDMI Licensing Administrator, Inc.

www.philips.com

Energy Labelling

34E1C5600HE



Printed in China



H41G78S381343A

PHILIPS

Curved Monitor

5000 Series

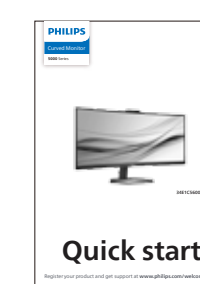
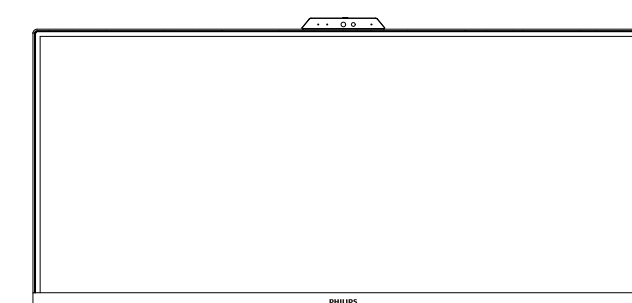


34E1C5600HE

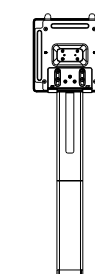
Quick start

Register your product and get support at www.philips.com/welcome

Contents



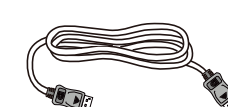
Quick start



Power



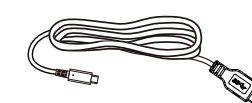
*HDMI



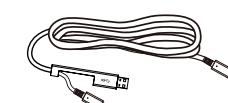
*DP



*USB C-C



*USB C-A

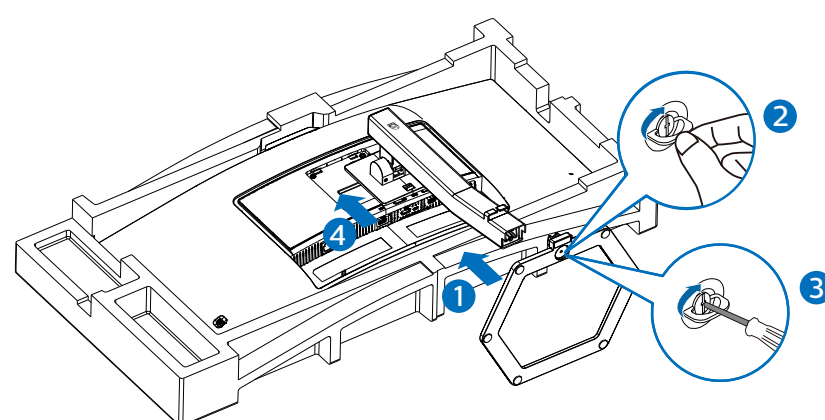
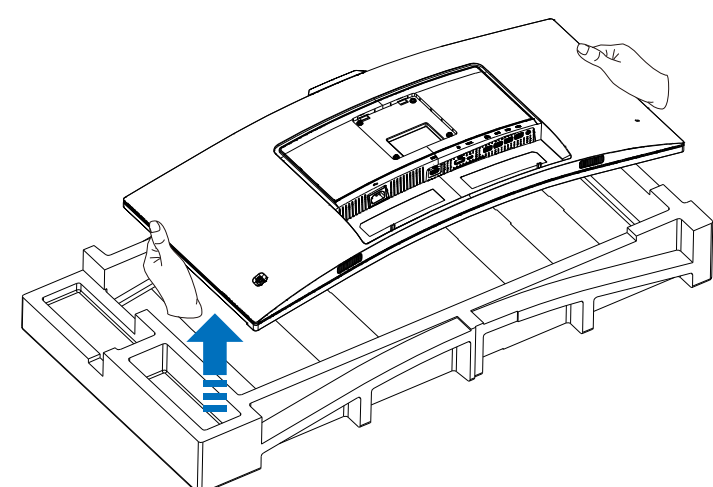


*USB C-C/A

*Different according to region

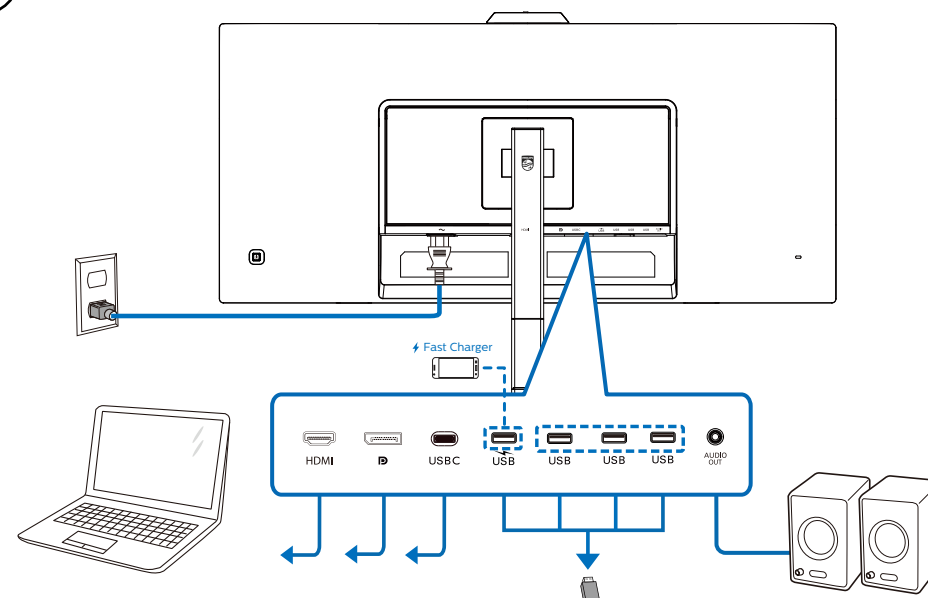
Display design may differ from that illustrated

1

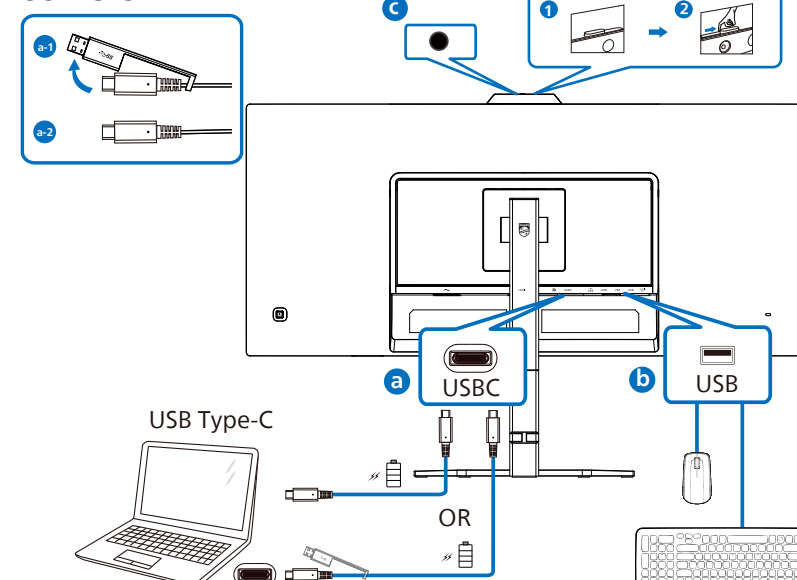


⚠ **CAUTION:** Place the monitor face down on a smooth surface. Pay attention not to scratch or damage the screen.

2

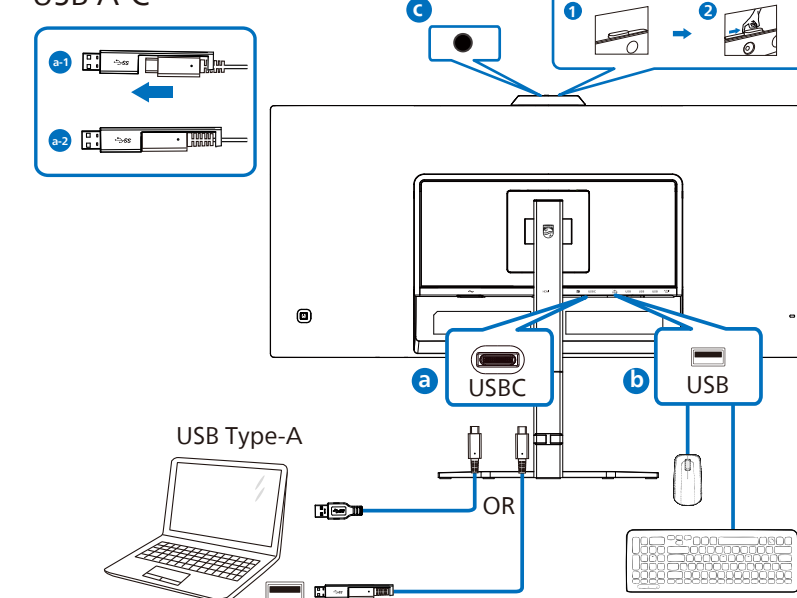


USB C-C



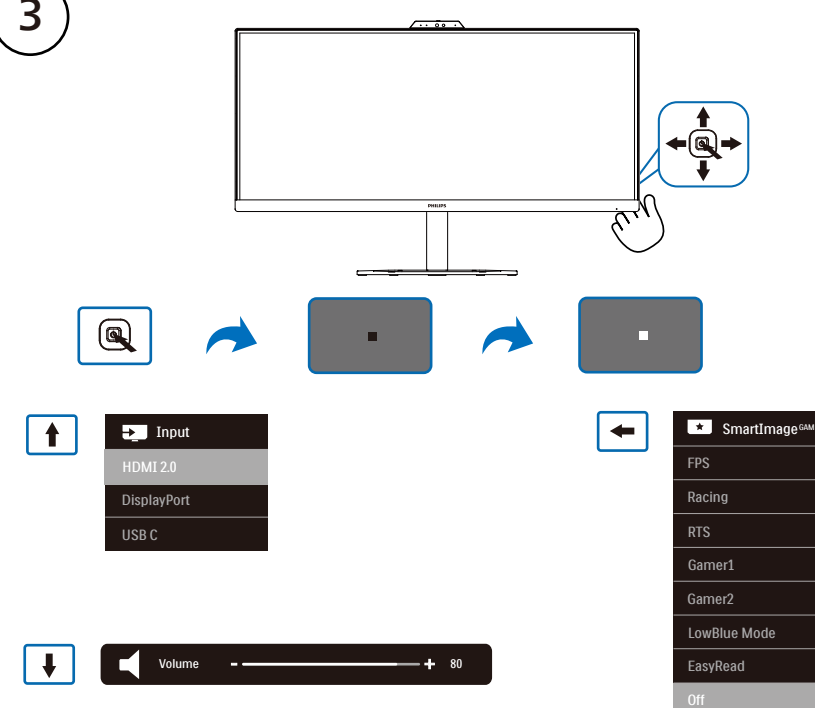
USB Type-C

USB A-C



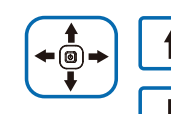
USB Type-A

3



→

Game Setting	Adaptive Sync	On
MPRT	Off	
LowBlue Mode	MPRT Level	0
SmartResponse	SmartFrame	Off
Input		
Picture		
PIP/PBP		
SmartSize		



Game Setting	Adaptive Sync	On
MPRT	Off	
LowBlue Mode	MPRT Level	0
SmartResponse	SmartFrame	Off
Input		
Picture		
PIP/PBP		
SmartSize		

→

Game Setting	Adaptive Sync	On
MPRT	Off	
LowBlue Mode	MPRT Level	0
SmartResponse	SmartFrame	Off
Input		
Picture		
PIP/PBP		
SmartSize		

←

Game Setting	Adaptive Sync	On
MPRT	Off	
LowBlue Mode	MPRT Level	0
SmartResponse	SmartFrame	Off
Input		
Picture		
PIP/PBP		
SmartSize		