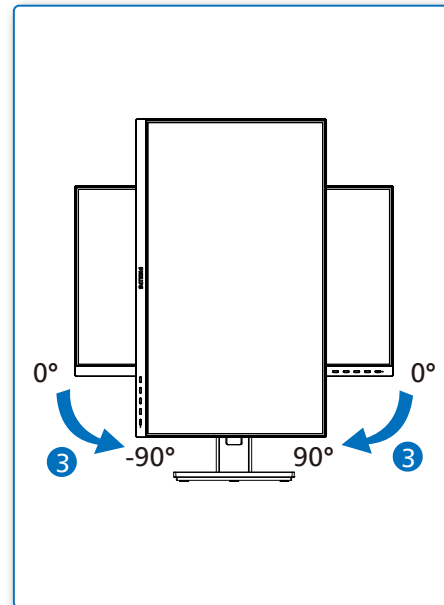
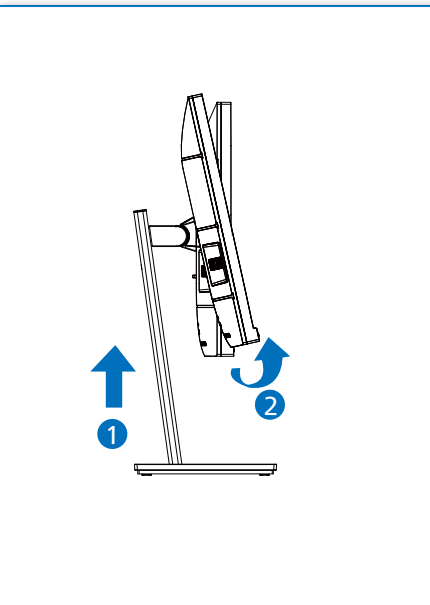
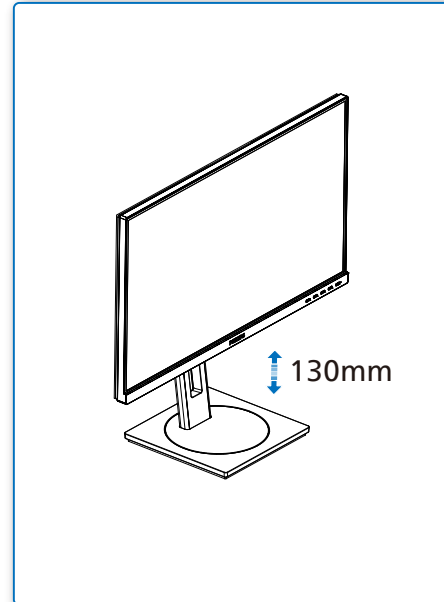
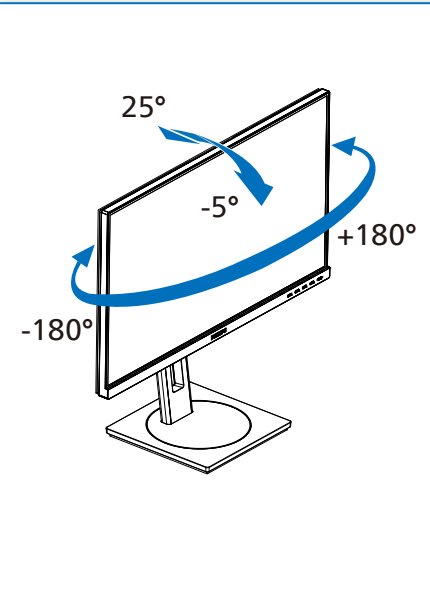


4



Register your product and get support at
www.philips.com/support



FAQ

Software
SmartControlUser
Manual

Version: M10273SQ1T
 2022 © TOP Victory Investments Ltd. All rights reserved.

This product has been manufactured by and is sold under the responsibility of Top Victory Investments Ltd., and Top Victory Investments Ltd. is the warrantor in relation to this product. Philips and the Philips Shield Emblem are registered trademarks of Koninklijke Philips N.V. and are used under license.

Specifications are subject to change without notice.

HDMI

The terms HDMI, HDMI High-Definition Multimedia Interface, HDMI Trade Dress and the HDMI Logos are trademarks or registered trademarks of HDMI Licensing Administrator, Inc.

www.philips.com

Energy Labelling

27351



Printed in China



H41G78S381391A

PHILIPS

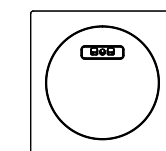
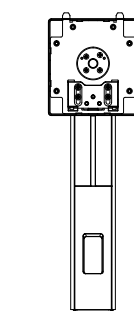
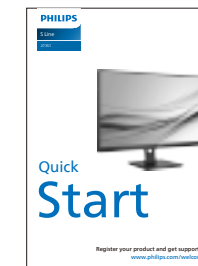
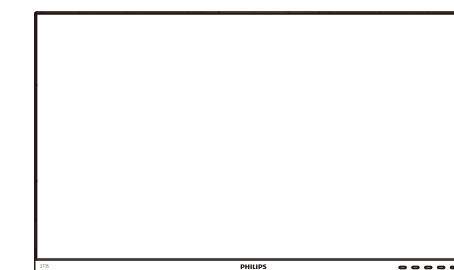
S Line

27351

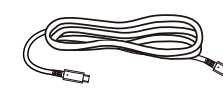


Quick Start

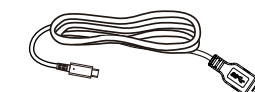
Register your product and get support at
www.philips.com/welcome



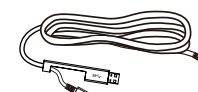
Power



*USB C-C



*USB C-A



*USB C-C/A



*HDMI

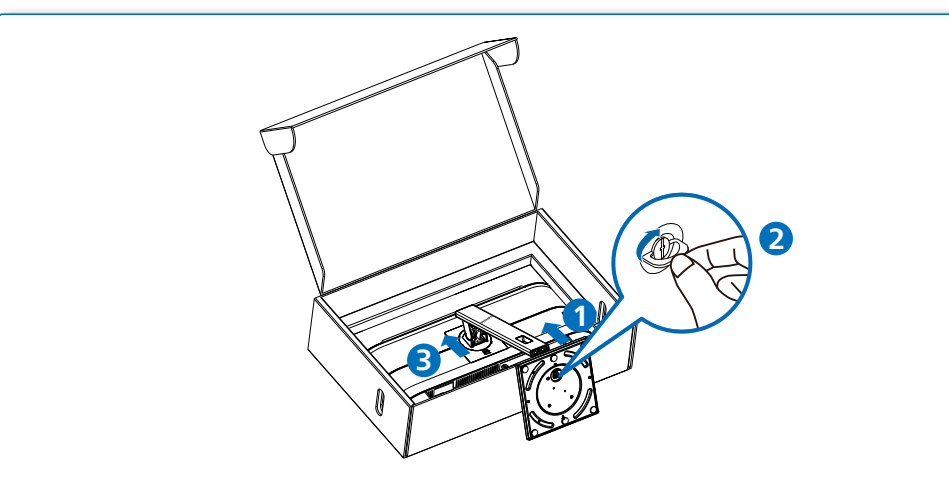


*DP

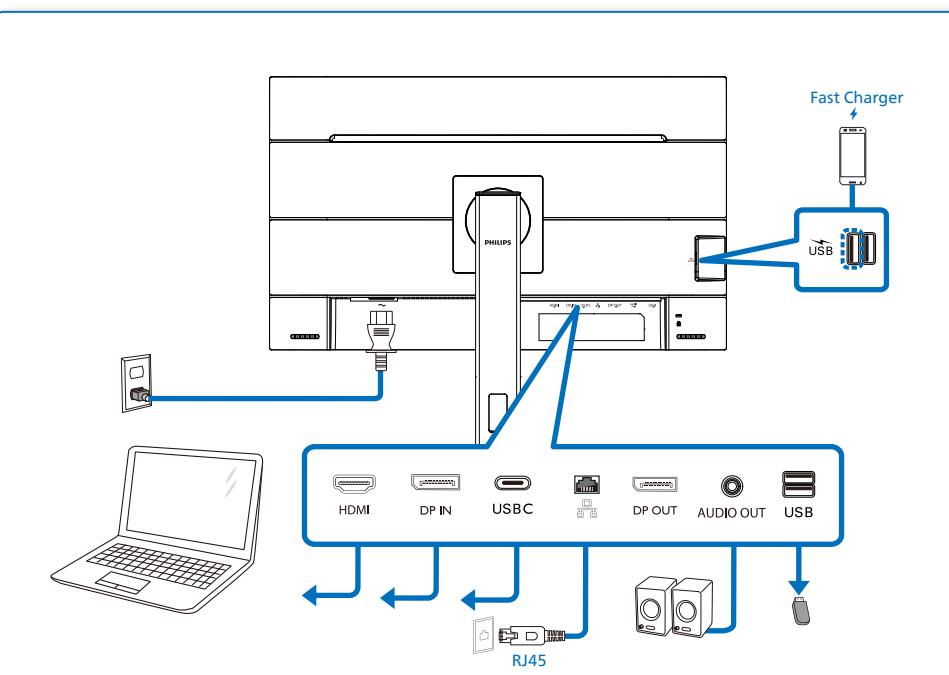
*Different according to region

Display design may differ from that illustrated

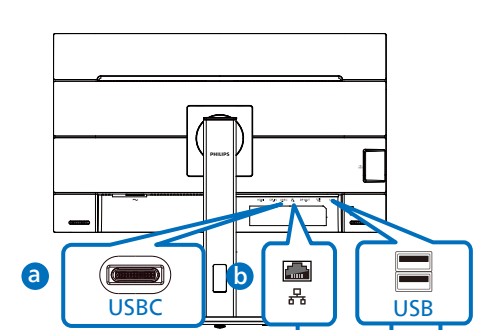
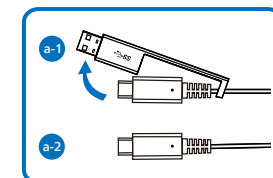
1



2

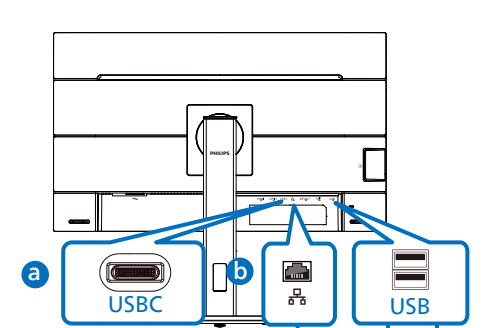
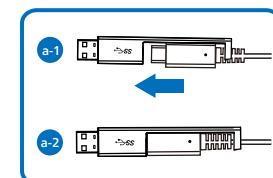


USB docking (USB C-C)



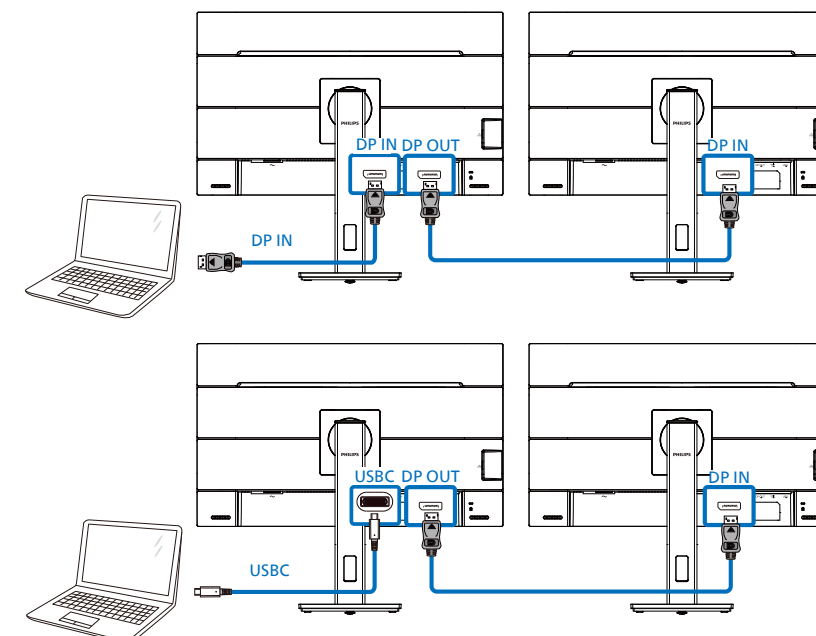
USB Type-C

USB hub (USB A-C)



USB Type-A

Multi-stream transport



3

