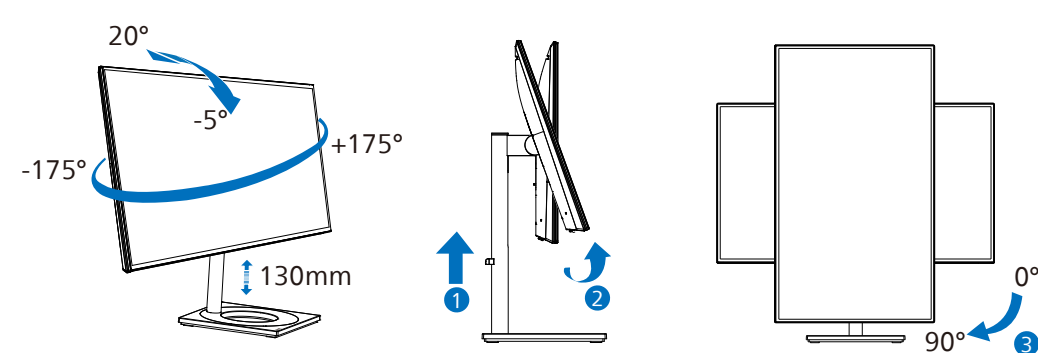
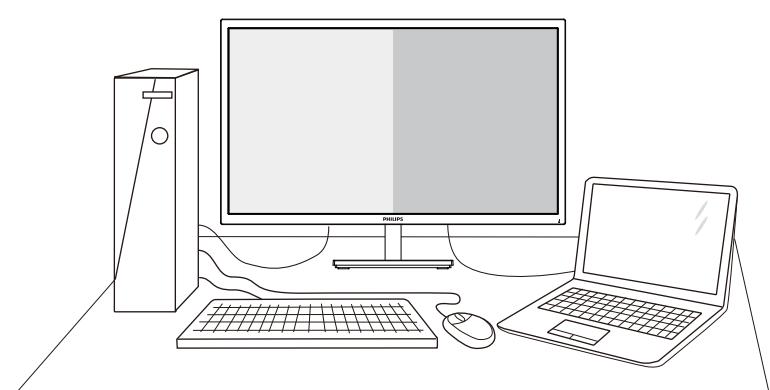


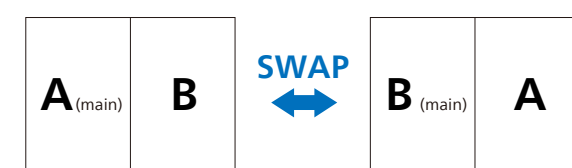
4



5



PBP

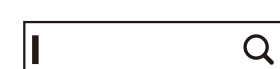


(1x main, 1x sub)

MultiView		SUB SOURCE POSSIBILITY (x1)			
MAIN SOURCE (x1)	Inputs	1 HDMI 2.0	2 HDMI 2.0	DisplayPort	USB-C
	1 HDMI 2.0	●	●	●	●
	2 HDMI 2.0	●	●	●	●
	DisplayPort	●	●	●	●
	USB-C	●	●	●	●



Register your product and get support at  
[www.philips.com/support](http://www.philips.com/support)



FAQ



Software SmartControl



User Manual

Version: 27E1N8900Q1T  
 2021 © TOP Victory Investments Ltd. All rights reserved.

This product has been manufactured by and is sold under the responsibility of Top Victory Investments Ltd., and Top Victory Investments Ltd. is the warrantor in relation to this product. Philips and the Philips Shield Emblem are registered trademarks of Koninklijke Philips N.V. and are used under license.

Specifications are subject to change without notice.

**HDMI**

The terms HDMI, HDMI High-Definition Multimedia Interface, HDMI trade dress and the HDMI Logos are trademarks or registered trademarks of HDMI Licensing Administrator, Inc.

[www.philips.com](http://www.philips.com)

Energy Labelling

27E1N8900



Printed in China



Q41G27M181366D

PHILIPS

Monitor

8000 Series



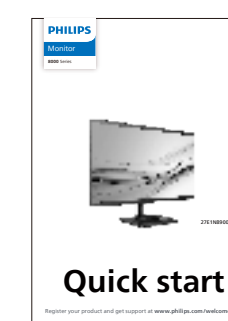
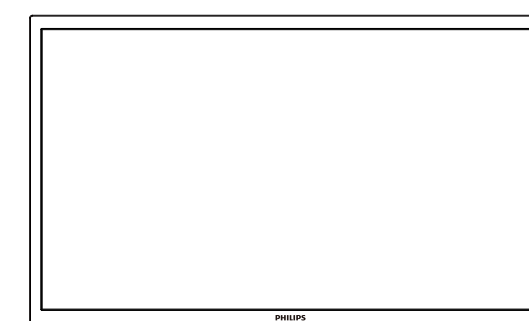
27E1N8900

# Quick start

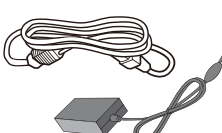
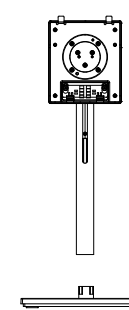
Register your product and get support at [www.philips.com/welcome](http://www.philips.com/welcome)



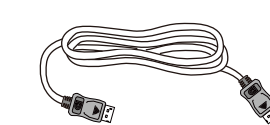
Contents



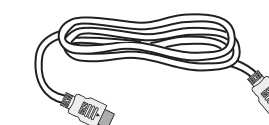
Quick start



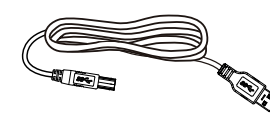
AC/DC Adapter



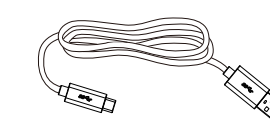
\*DP



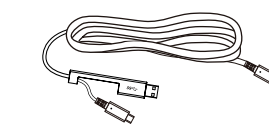
\*HDMI



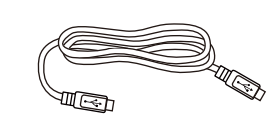
\*USB A-B



\*USB C-A



\*USB C-C/A

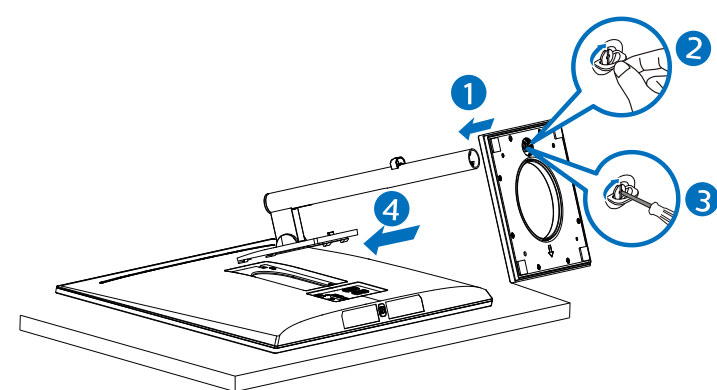


\*USB C-C

\*Different according to region

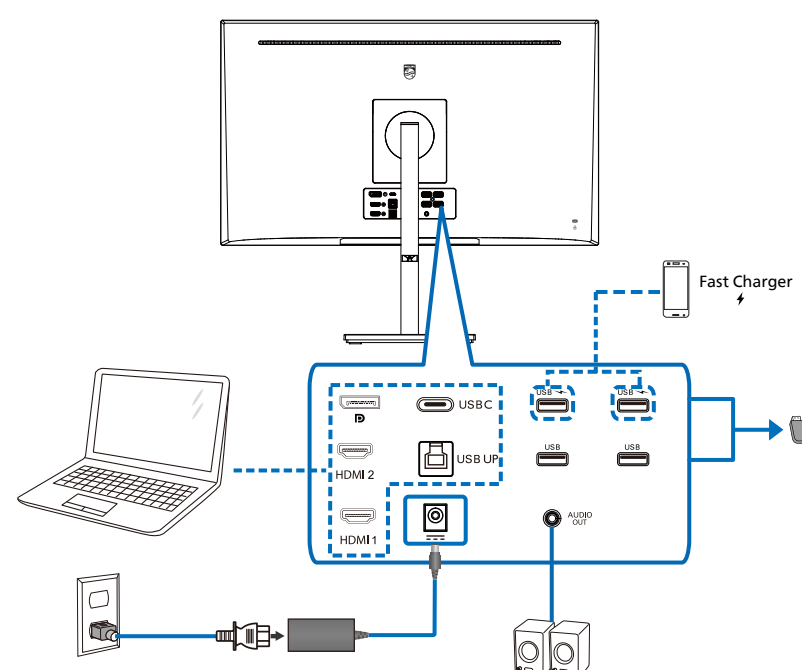
Display design may differ from that illustrated

1

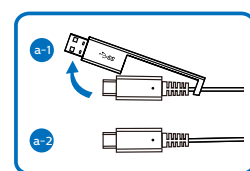


⚠ CAUTION: Place the monitor face down on a smooth surface. Pay attention not to scratch or damage the screen.

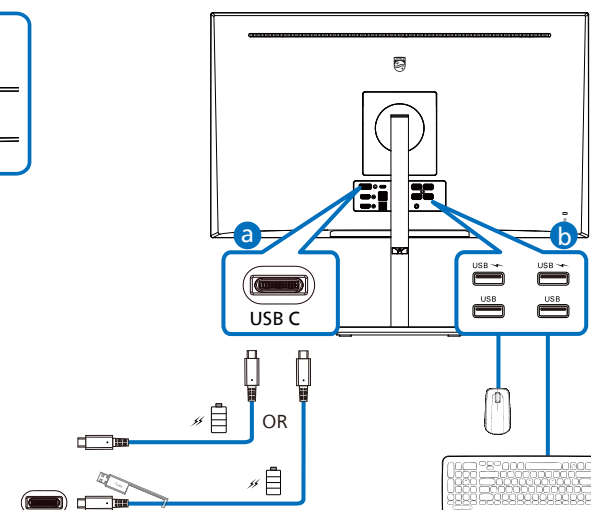
2



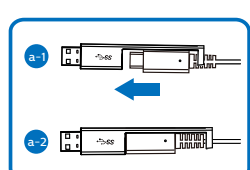
USB C-C



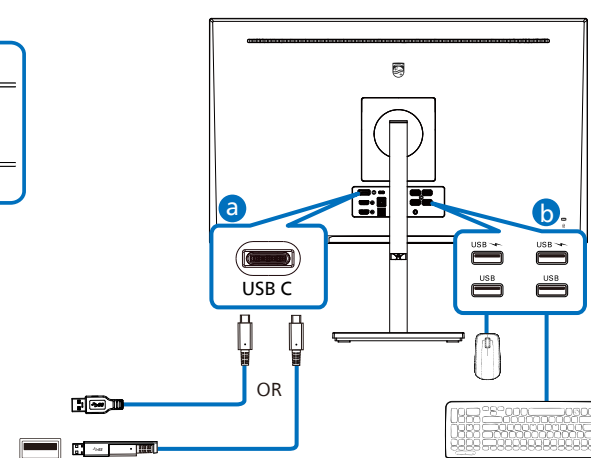
USB Type-C



USB A-C



USB Type-A



3

