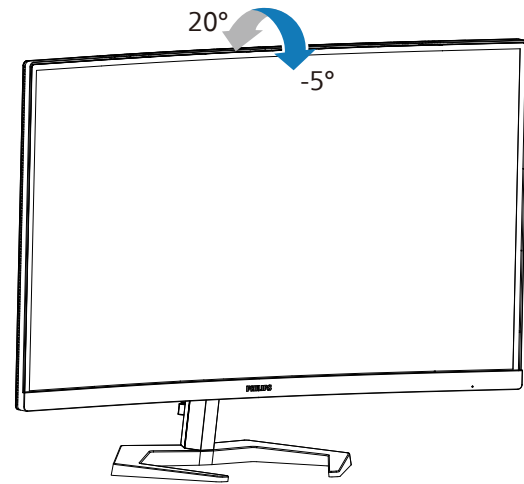


4



Register your product and get support at  
[www.philips.com/support](http://www.philips.com/support)



FAQ

Software  
SmartControlUser  
Manual

Version: 27M1C3200Q1T

2022 © TOP Victory Investments Ltd. All rights reserved.

This product has been manufactured by and is sold under the responsibility of Top Victory Investments Ltd., and Top Victory Investments Ltd. is the warrantor in relation to this product. Philips and the Philips Shield Emblem are registered trademarks of Koninklijke Philips N.V. and are used under license.

Specifications are subject to change without notice.



The Adopted Trademarks HDMI, HDMI High Definition Multimedia Interface, and the HDMI Logo are trademarks or registered trademarks of HDMI Licensing Administrator, Inc. in the United States and other countries.

[www.philips.com](http://www.philips.com)

Energy Labelling

27M1C3200VL



Printed in China



Q41G27M181367A

PHILIPS

Curved Gaming  
Monitor

Momentum 3000

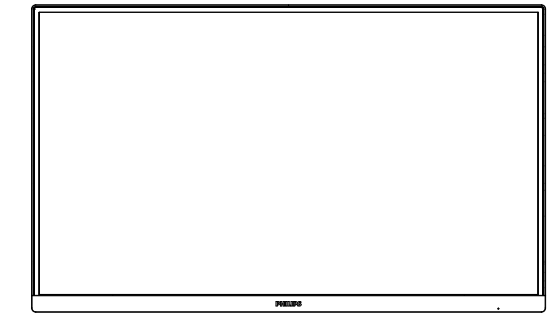


27M1C3200VL

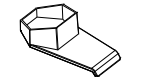
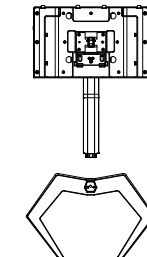
# Quick start

Register your product and get support at [www.philips.com/welcome](http://www.philips.com/welcome)

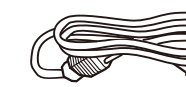
## Contents



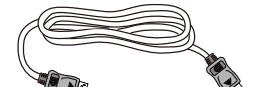
Quick start



\*Earphone-Hang



Power



\*DP

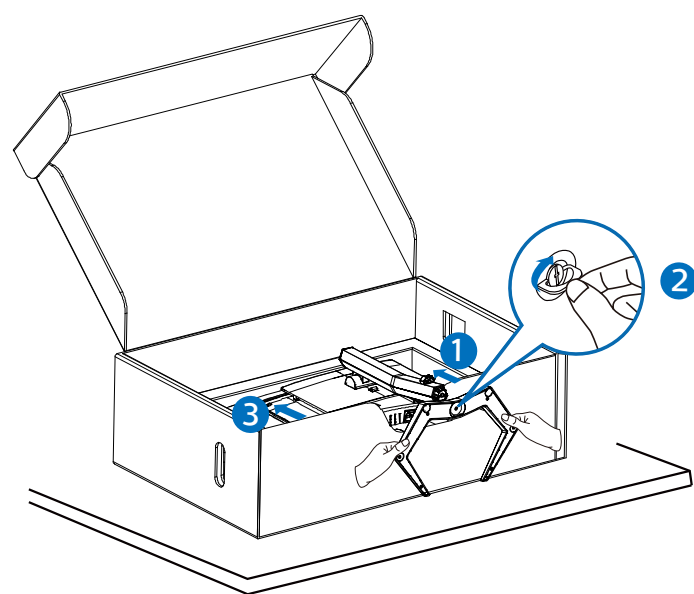


\*HDMI

\*Different according to region

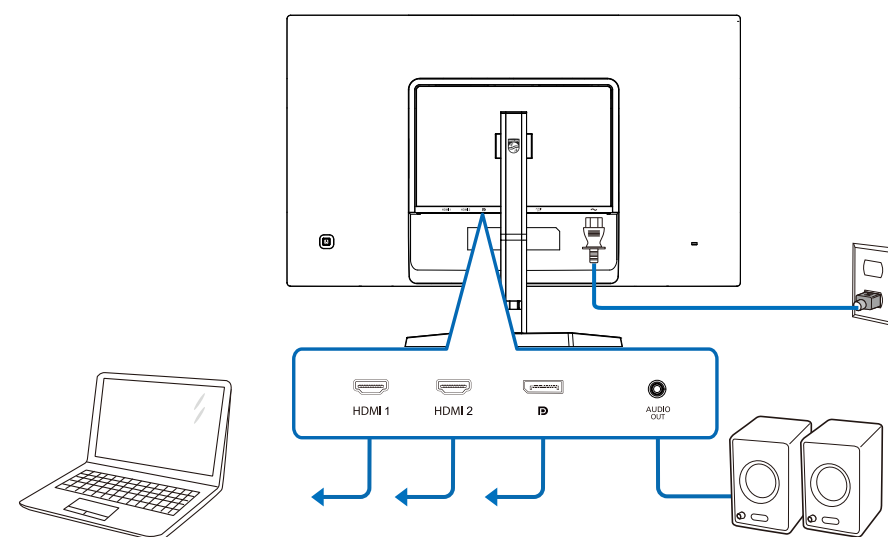
Display design may differ from that illustrated

1

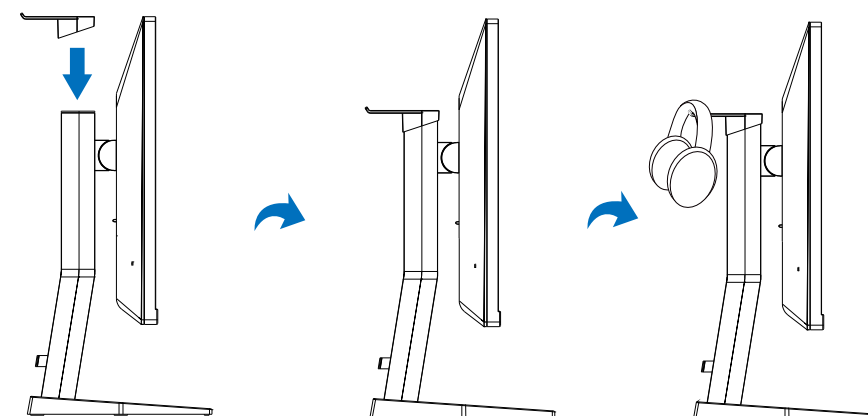


⚠ CAUTION: Place the monitor face down on a smooth surface. Pay attention not to scratch or damage the screen.

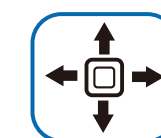
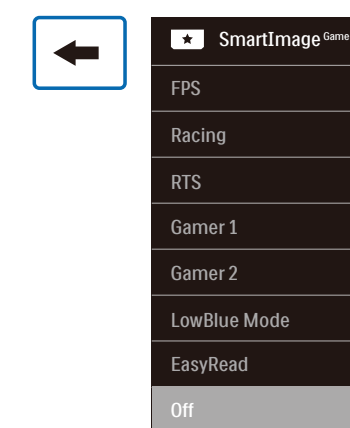
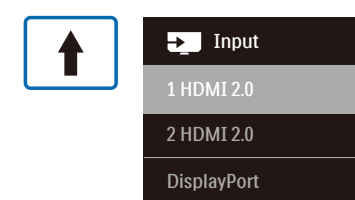
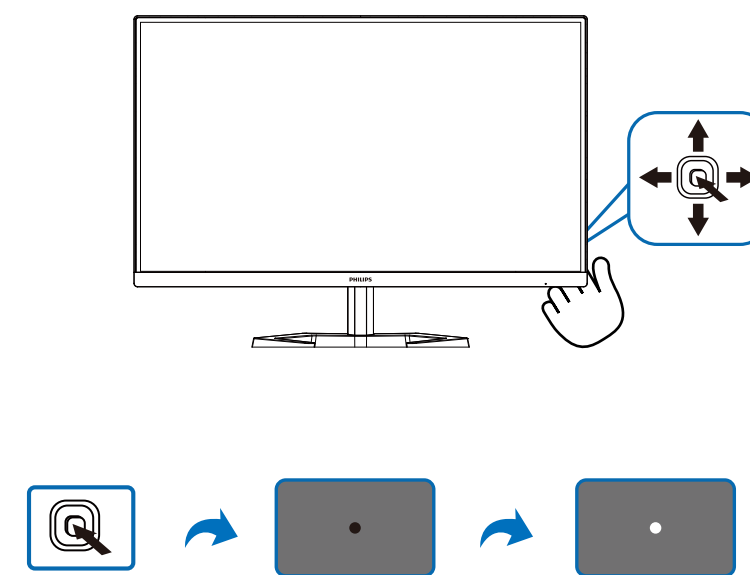
2



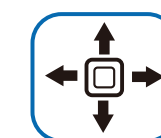
Earphone-Hang



3



Game Setting	Adaptive Sync	On
MPRT Level	Off	0
Crosshair	Off	
Low Input Lag	On	
SmartResponse	Off	
SmartFrame	Off	
SmartSize		
Audio		



Game Setting	Adaptive Sync	On
MPRT Level	Off	0
Crosshair	Off	
Low Input Lag	On	
SmartResponse	Off	
SmartFrame	Off	
SmartSize		
Audio		



Game Setting	Adaptive Sync	On
MPRT Level	Off	0
Crosshair	Off	
Low Input Lag	On	
SmartResponse	Off	
SmartFrame	Off	
SmartSize		
Audio		



Game Setting	Adaptive Sync	On
MPRT Level	Off	0
Crosshair	Off	
Low Input Lag	On	
SmartResponse	Off	
SmartFrame	Off	
SmartSize		
Audio		