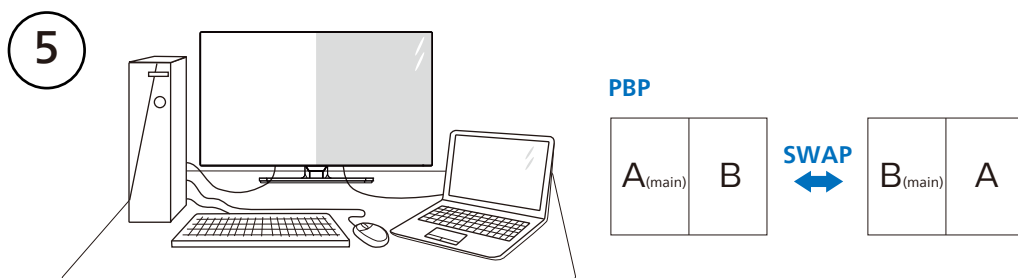
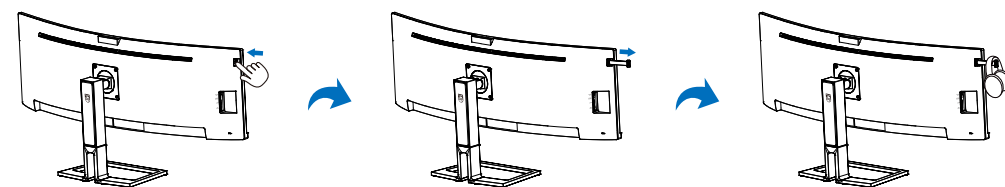


Earphone-Hang

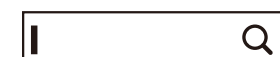


(1x main, 1x sub)

MultiView	Inputs	SUB SOURCE POSSIBILITY (x1)			
		1 HDMI 2.0	2 HDMI 2.0	DisplayPort	Thunderbolt™ 4
MAIN SOURCE (x1)	1 HDMI 2.0	●	●	●	●
	2 HDMI 2.0	●	●	●	●
	DisplayPort	●	●	●	●
	Thunderbolt™ 4	●	●	●	●



Register your product and get support at [www.philips.com/support](http://www.philips.com/support)



FAQ



Software SmartControl



User Manual

Version: M1140BU6903Q1WWL  
2023 © TOP Victory Investments Ltd. All rights reserved.

This product has been manufactured by and is sold under the responsibility of Top Victory Investments Ltd., and Top Victory Investments Ltd. is the warrantor in relation to this product. Philips and the Philips Shield Emblem are registered trademarks of Koninklijke Philips N.V. and are used under license.

Specifications are subject to change without notice.

**HDMI®**

The terms HDMI, HDMI High-Definition Multimedia Interface, HDMI Trade Dress and the HDMI Logos are trademarks or registered trademarks of HDMI Licensing Administrator, Inc.

[www.philips.com](http://www.philips.com)

Energy Labelling  
40B1U6903CH



Printed in China



F41G40M1813-1B----

**PHILIPS**

Curved Business Monitor

6000 Series

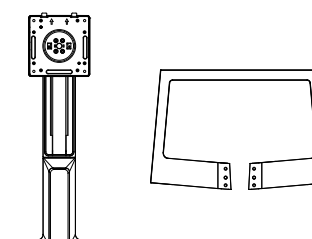
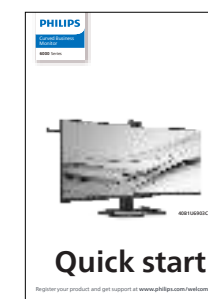
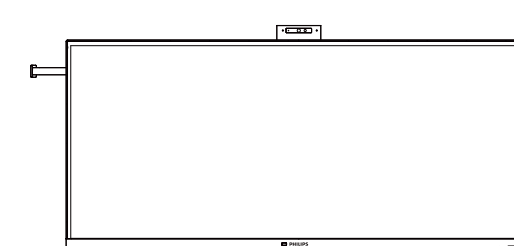


40B1U6903CH

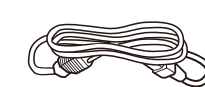
# Quick start

Register your product and get support at [www.philips.com/welcome](http://www.philips.com/welcome)

## Contents



Screw and screwdriver  
M4 x 4



Power



\*HDMI

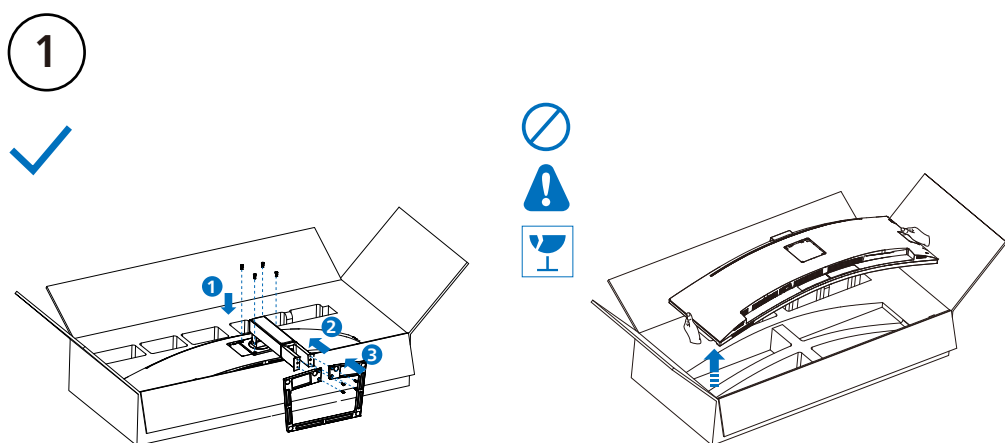


\*DP

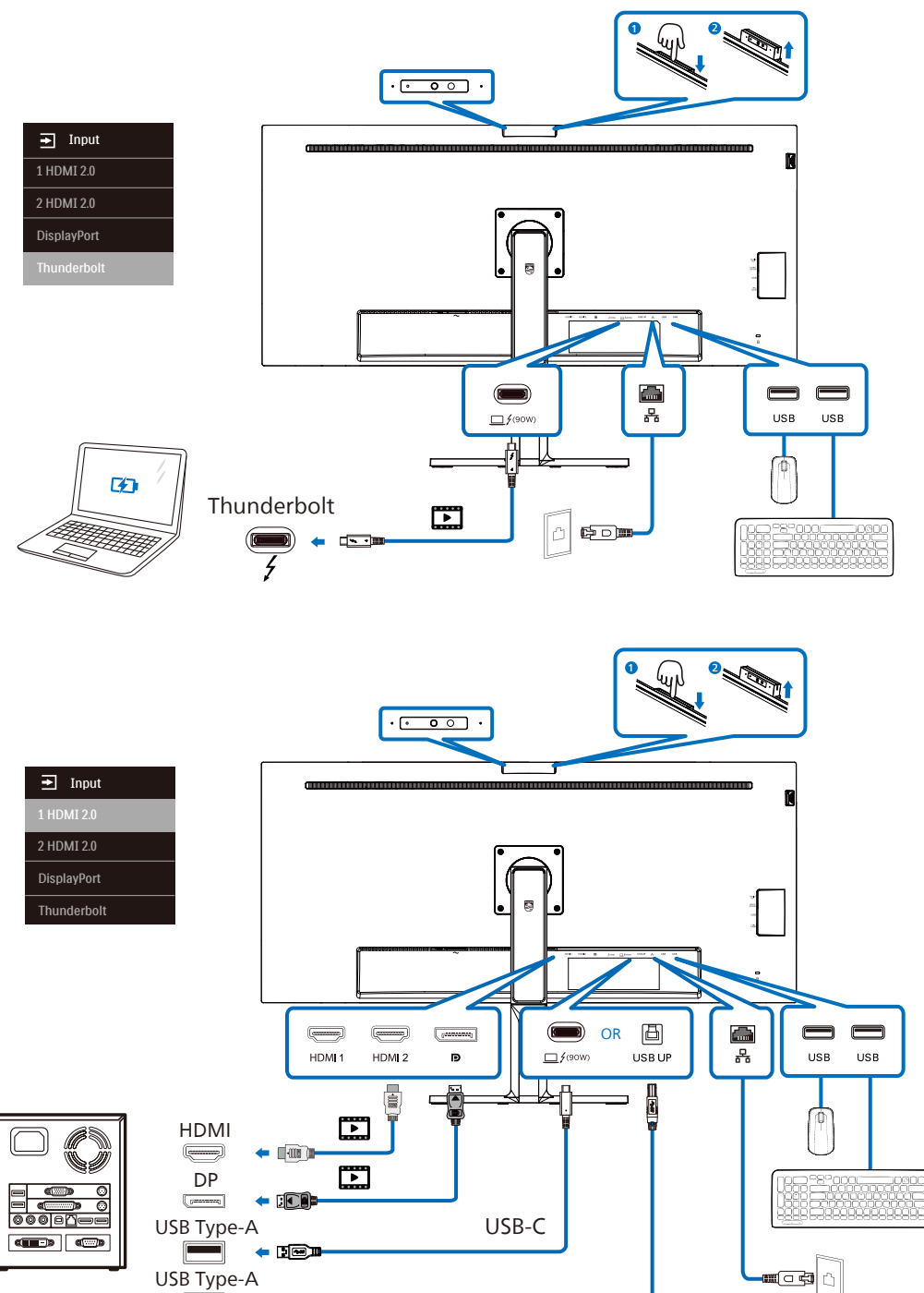
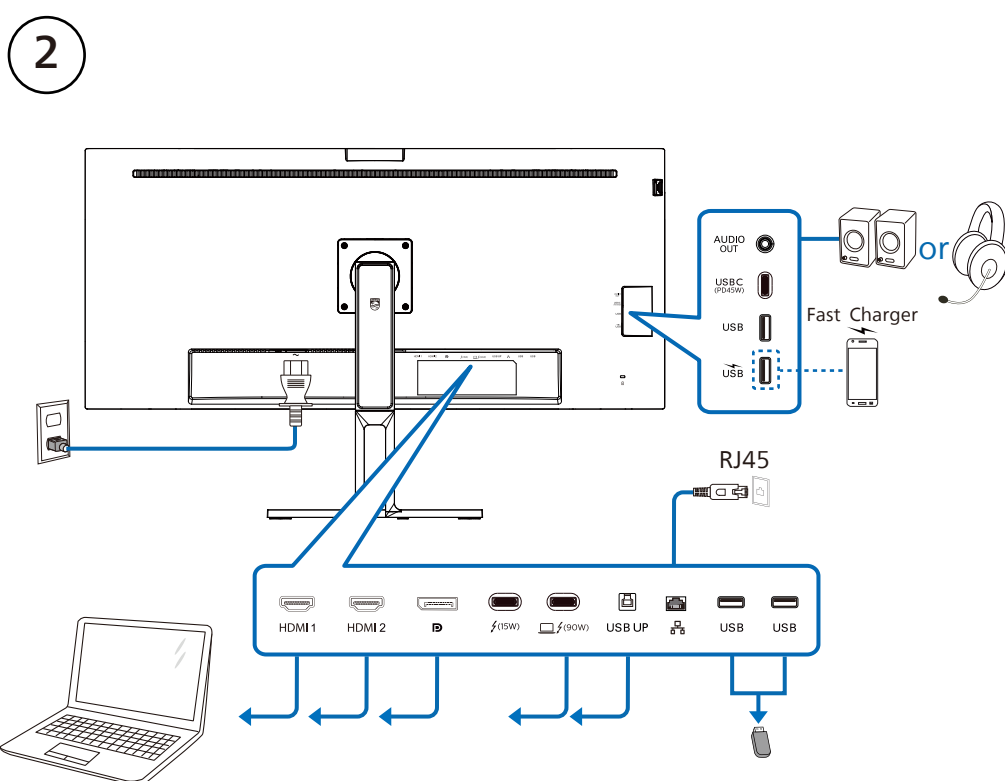


\*Thunderbolt™ 4

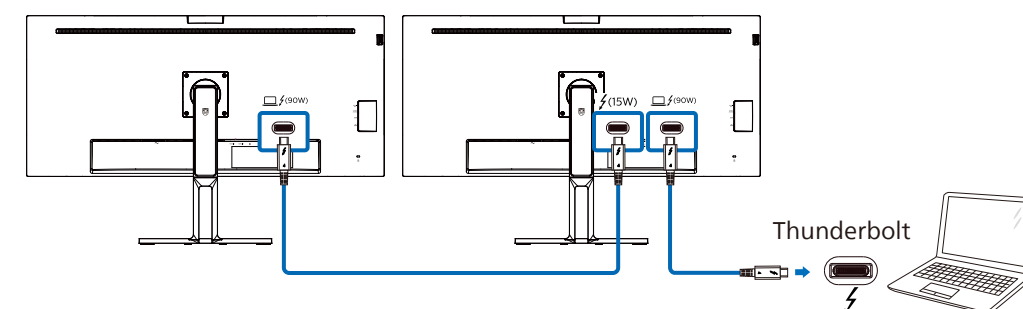
\*Different according to region  
Display design may differ from that illustrated



CAUTION: Place the monitor face down on a smooth surface. Pay attention not to scratch or damage the screen.



### Multi-stream transport



### KVM

