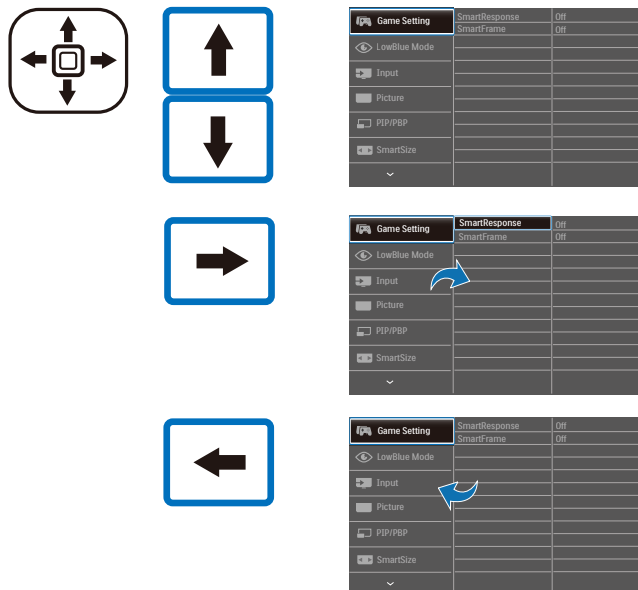
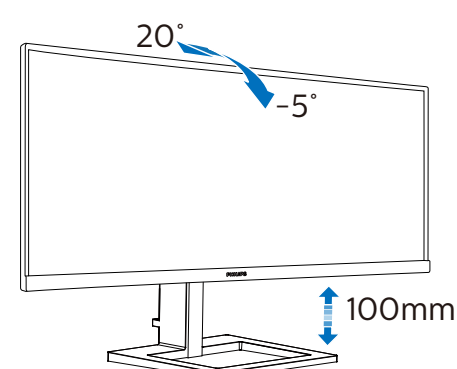


3



4



Register your product and get support at
www.philips.com/support



FAQ

Software
SmartControlUser
Manual

Version: M2345EEQ1T
 2020 © TOP Victory Investments Ltd. All rights reserved.

This product has been manufactured by and is sold under the
 responsibility of Top Victory Investments Ltd., and Top Victory
 Investments Ltd. is the warrantor in relation to this product.
 Philips and the Philips Shield Emblem are registered trademarks
 of Koninklijke Philips N.V. and are used under license.

Specifications are subject to change without notice.

HDMI

The terms HDMI, HDMI High-Definition Multimedia
 Interface, and the HDMI Logo are trademarks or
 registered trademarks of HDMI Licensing
 Administrator, Inc.

www.philips.com

Energy Labelling

345E2AE



Printed in China



H41G78S281366C

PHILIPS

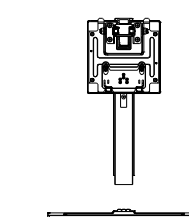
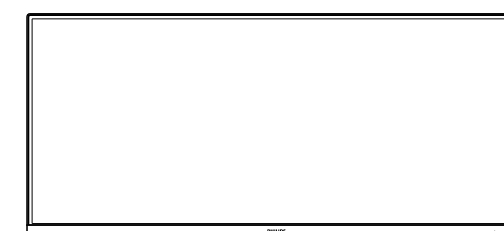
E Line

345E2

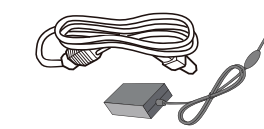


Quick Start

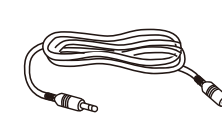
Register your product and get support at
www.philips.com/welcome



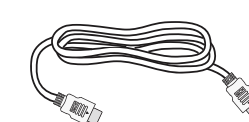
Stand/Base



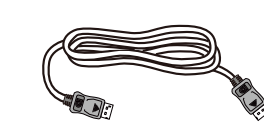
AC/DC Adapter



* Audio Cable



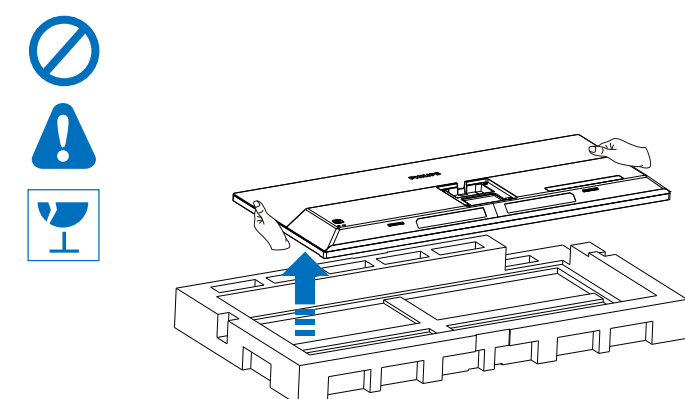
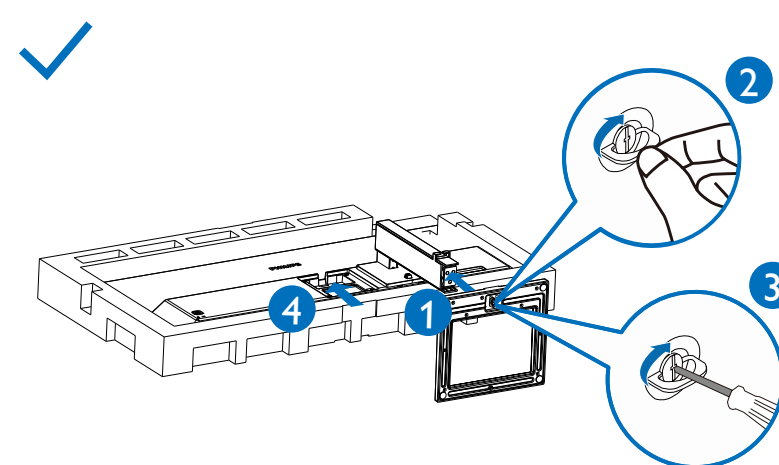
* HDMI



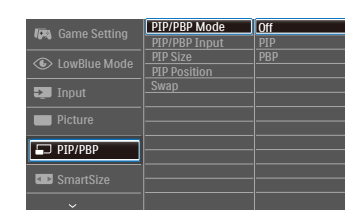
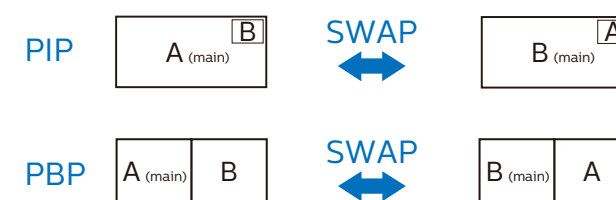
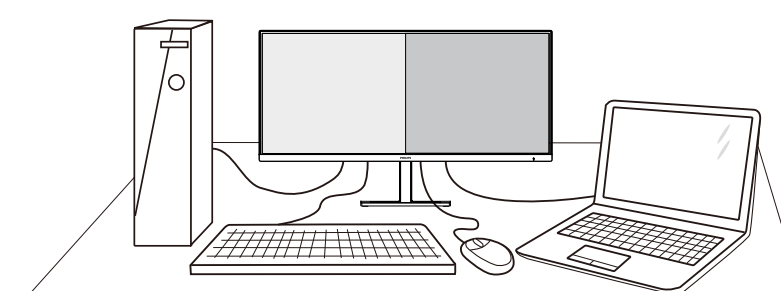
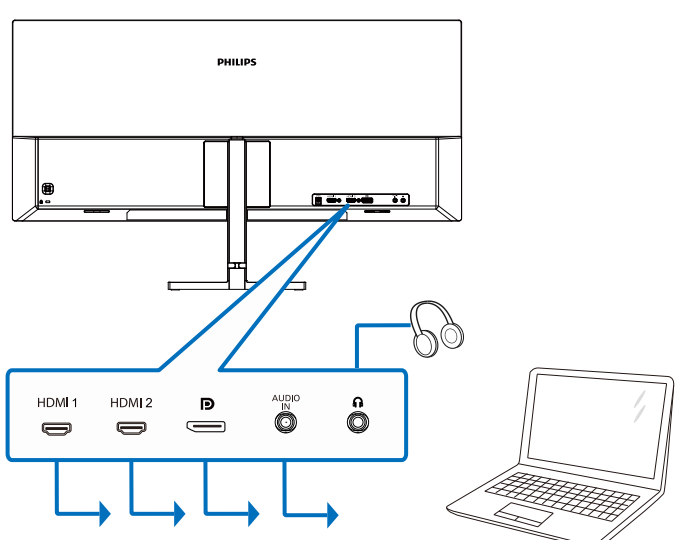
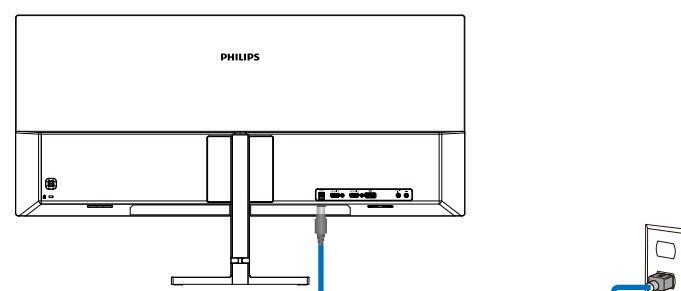
* DP

* Different according to region.
 Display design may differ from those illustrated.

1



2



		SUB SOURCE POSSIBILITY (x1)		
MAIN SOURCE (x1)	Inputs	HDMI 1	HDMI 2	DisplayPort
	HDMI 1	•		•
	HDMI 2		•	•
	DisplayPort	•	•	•

3

