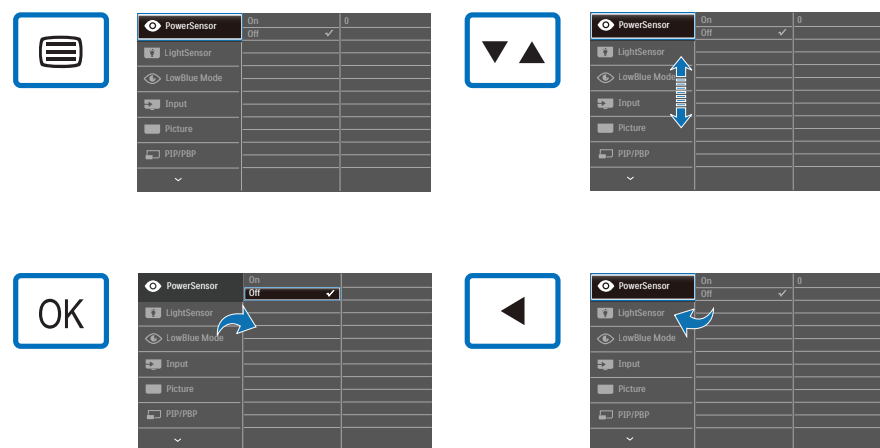
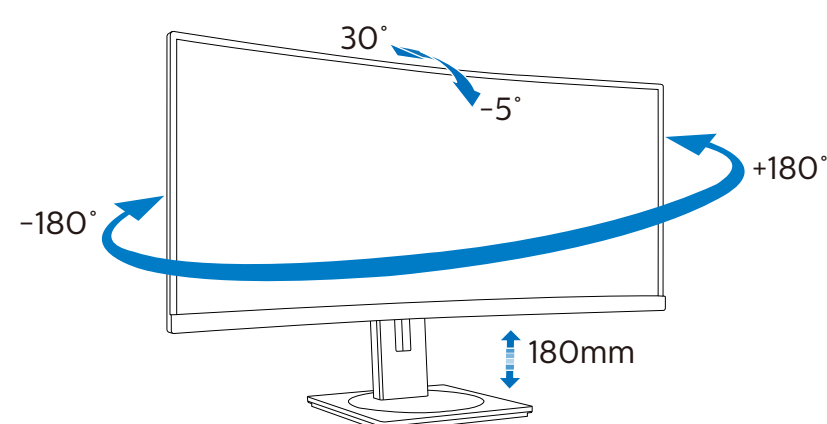


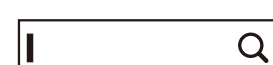
4



5



Register your product and get support at  
[www.philips.com/support](http://www.philips.com/support)



FAQ

Software  
SmartControlUser  
Manual

Version: M10345B1Q1T  
 2019 © TOP Victory Investments Ltd. All rights reserved.

This product has been manufactured by and is sold under the  
 responsibility of Top Victory Investments Ltd., and Top Victory  
 Investments Ltd. is the warrantor in relation to this product.  
 Philips and the Philips Shield Emblem are registered trademarks of  
 Koninklijke Philips N.V. and are used under license.

Specifications are subject to change without notice.

**HDMI**

The terms HDMI, HDMI High-Definition Multimedia  
 Interface, and the HDMI Logo are trademarks or  
 registered trademarks of HDMI Licensing  
 Administrator, Inc.

[www.philips.com](http://www.philips.com)

Energy Labelling  
 345B1C



Printed in China



H41G78S381342A

**PHILIPS**

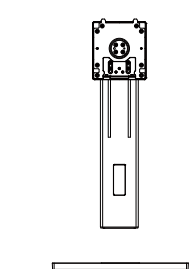
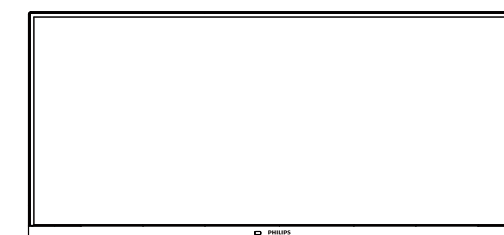
B Line

345B1



# Quick Start

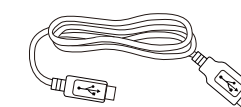
Register your product and get support at  
[www.philips.com/welcome](http://www.philips.com/welcome)



Stand/Base



Power



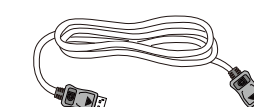
\*USB



\* I/O Cover



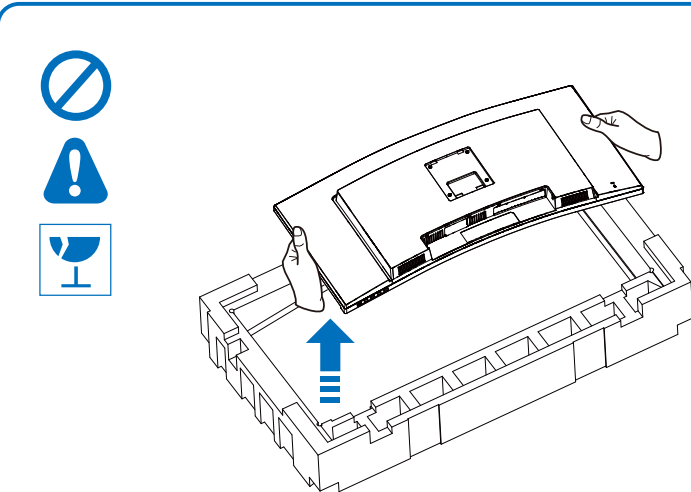
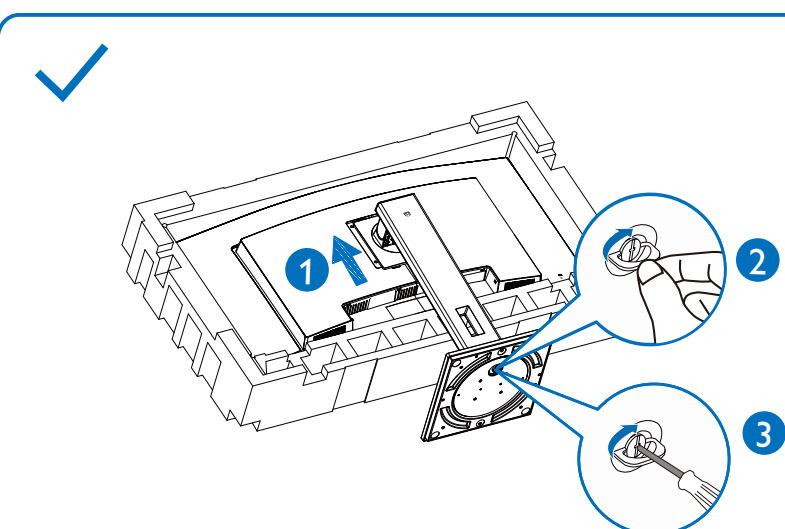
\* HDMI



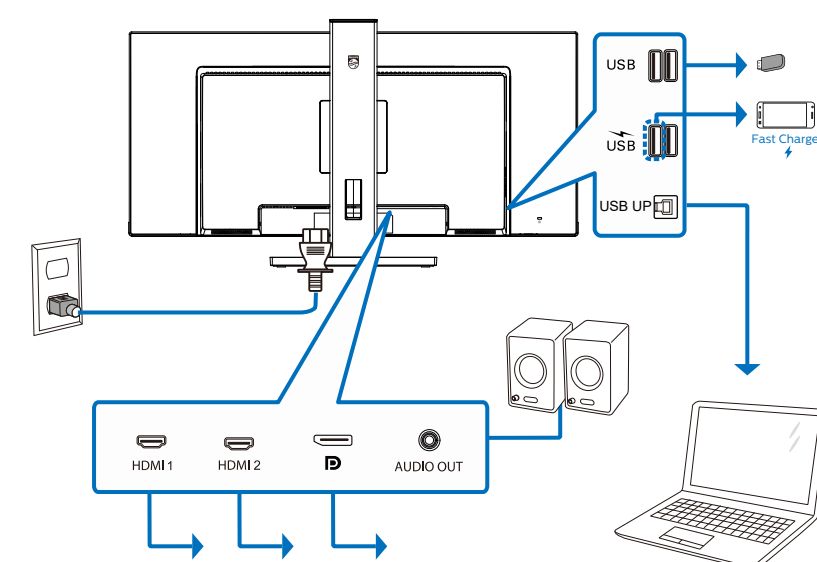
\* DP

\* Different according to region.  
 Display design may differ from those illustrated.

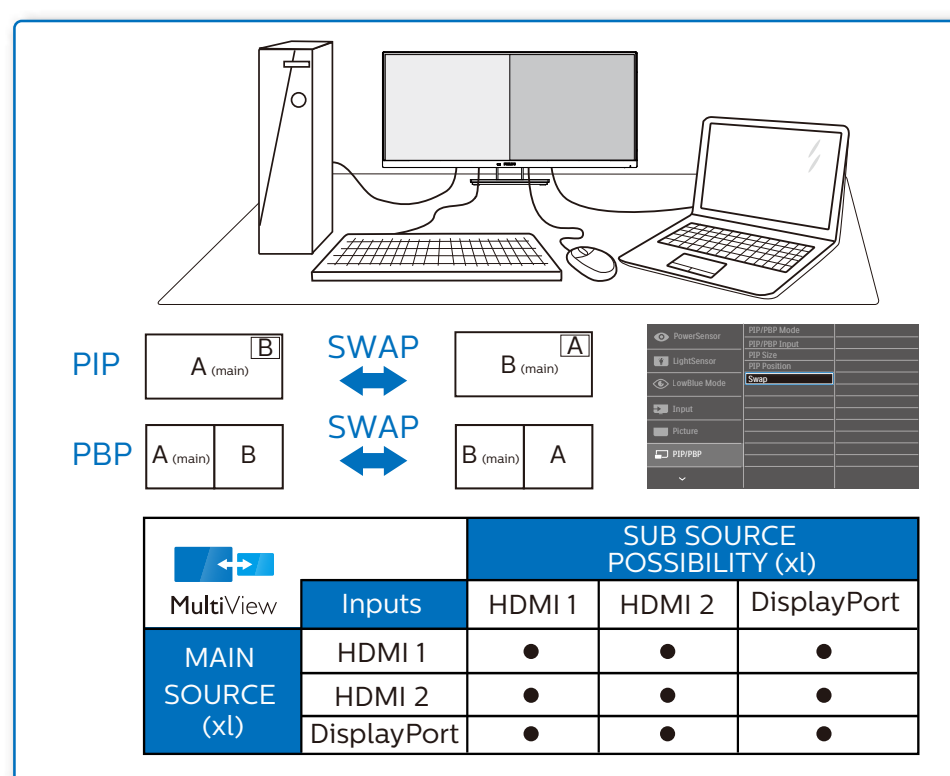
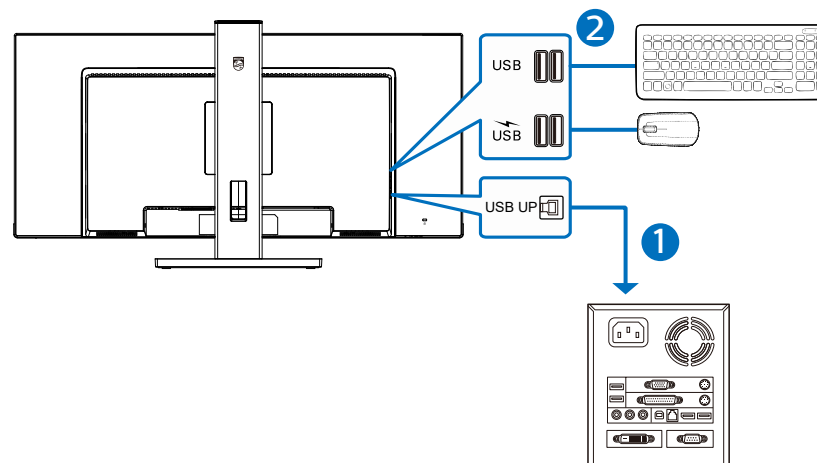
1



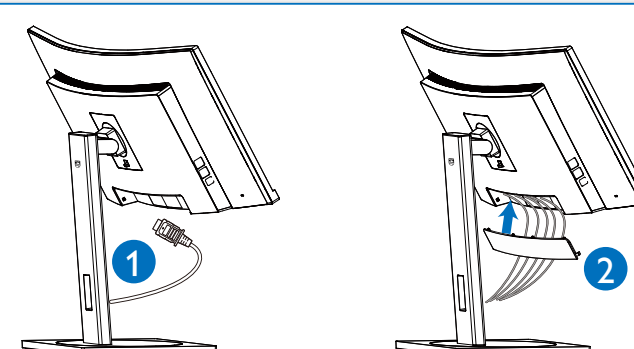
2



USB hub



3



4

