

GRAPHIC DEVELOPMENT

MMD

Product name

_241B7QGJEB

Project name

Project no.

Finishing

Folded sheet

Scale

1:1

Size Spreads

594 (W) x 210 (H) mm

Size

148.5 (W) x 210 (H) mm

Operator(s)

Date amended

VERSION No.

APPROVAL

QC Lithographer

Product Manager

Date Check

ARTWORK DOCUMENT

Paper

80gsm White, woodfree coated

Numbers of colours

2C2C

Pantone 300c

Spotcolor

Aftertreatment

☐ Cropping

☐ Coating

☐ Varnishing

☐ Embossing

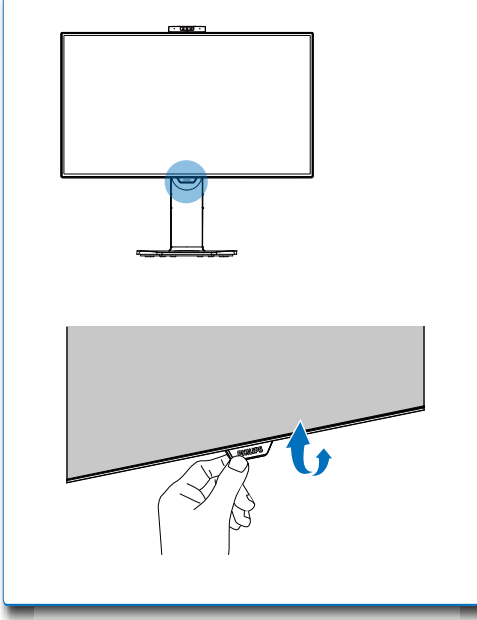
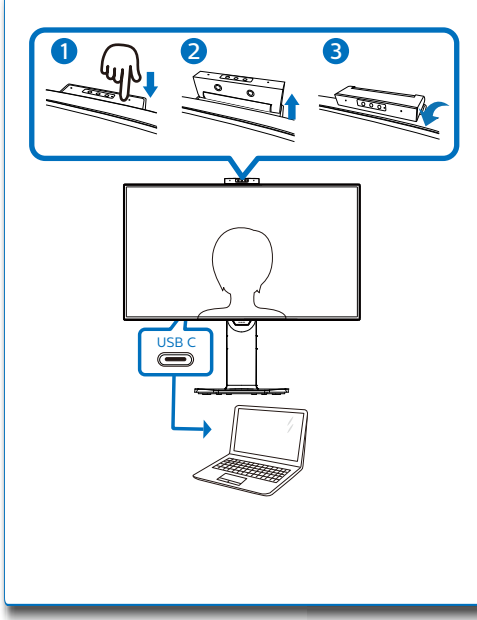
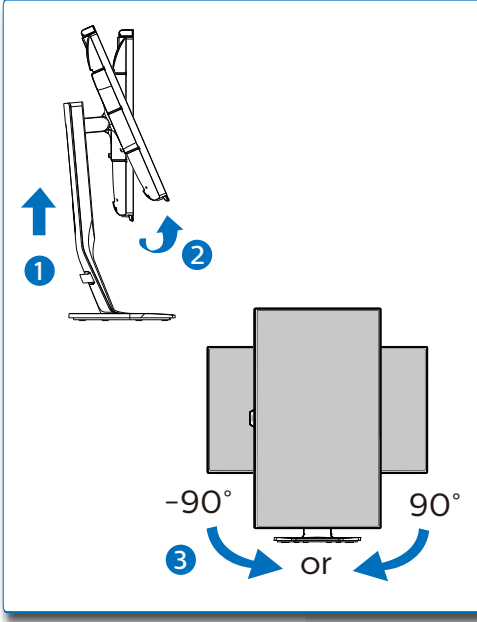
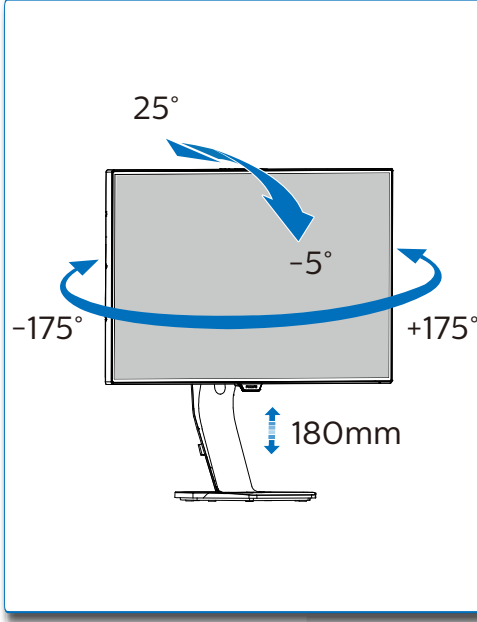
☐ Cutterguide

☐ Die-cut

☐ Binding

☐ Glue

4



- EN Need help?**
Online help: www.philips.com/support
- SC 需要帮助?**
在线帮助: www.philips.com/support
- FR Besoin d'Aide ?**
Aide en ligne: www.philips.com/support
- ES ¿Necesita ayuda?**
Ayuda en línea: www.philips.com/support
- DE Benötigen Sie Hilfe?**
Online-Hilfe: www.philips.com/support
- IT Avete bisogno di aiuto?**
Guida in linea: www.philips.com/support
- BR Precisa ajuda?**
Ajuda online: www.philips.com/support
- KO 도움이 필요하신가요?**
온라인 도움말: www.philips.com/support
- UK Потребуєте допомоги?**
Підтримка он-лайн: www.philips.com/support
- RU Нужна помощь?**
Интерактивная справка: www.philips.com/support
- TR Yardıma ihtiyacınız var mı?**
Online yardım: www.philips.com/support
- HI क्या सहायता की जरूरत है?**
ऑनलाइन सहायता: www.philips.com/support
- AR هل تريد المساعدة؟**
www.philips.com/support للمساعدة عبر الإنترنت
- JP ヘルプが必要ですか?**
オンラインヘルプ: www.philips.com/support

Version: M9329BQIT

© 2018 Koninklijke Philips N.V. All rights reserved.

This product was manufactured and brought to the market by or on behalf of Top Victory Investments Ltd. or one of its affiliates. Top Victory Investments Ltd. is the warrantor in relation to this product. Philips and the Philips Shield Emblem are registered trademarks of Koninklijke Philips N.V. used under license.

Specifications are subject to change without notice.
www.philips.com

HDMI
HDMI trademark and related patents on technologies belong to their respective owners.

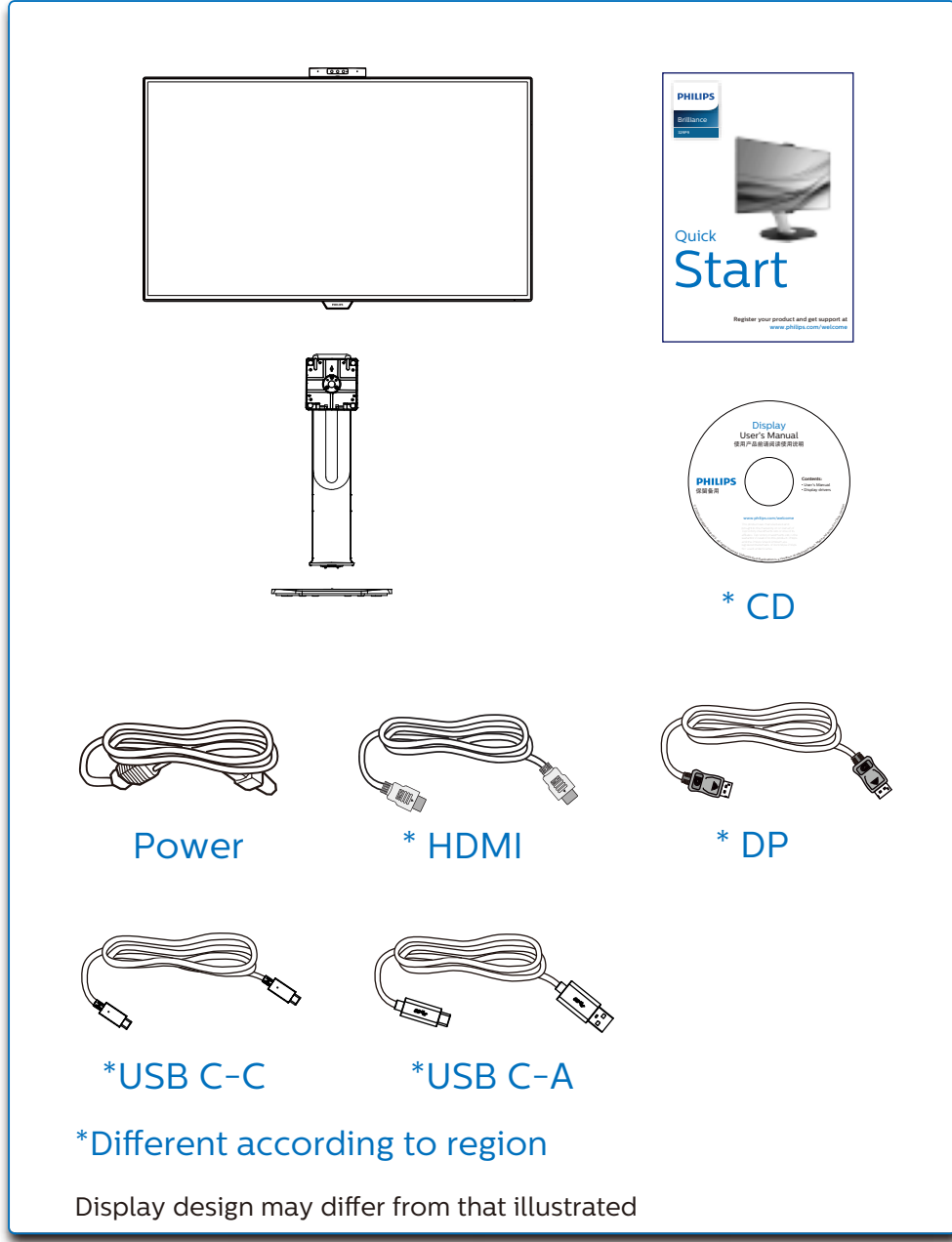
Printed in China

F41G32M1813-6A----

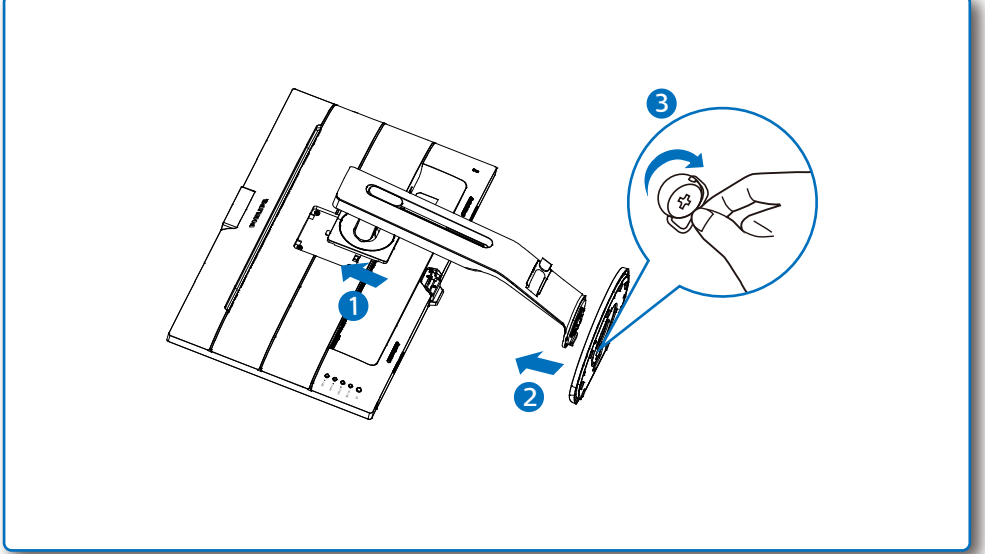


Quick Start

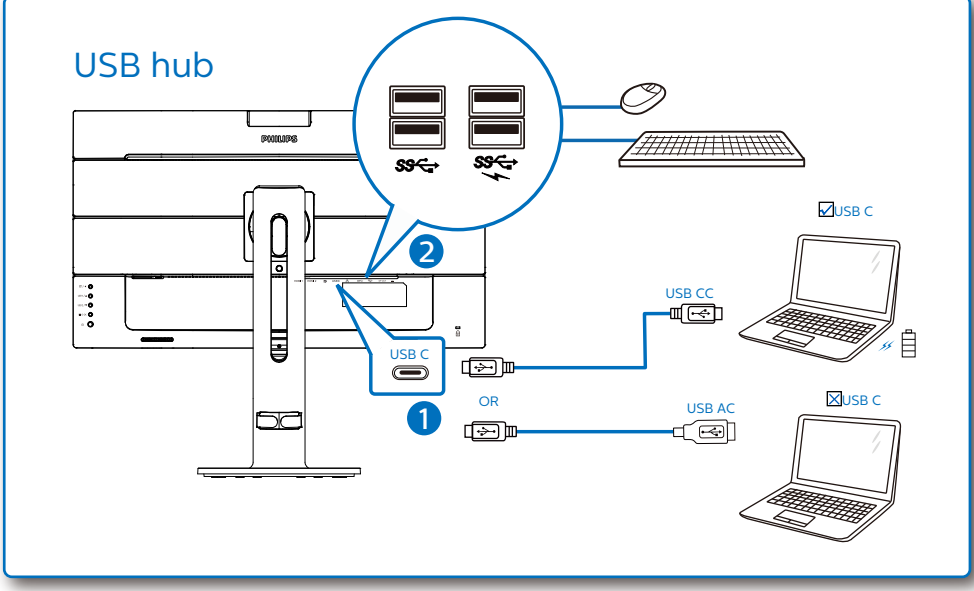
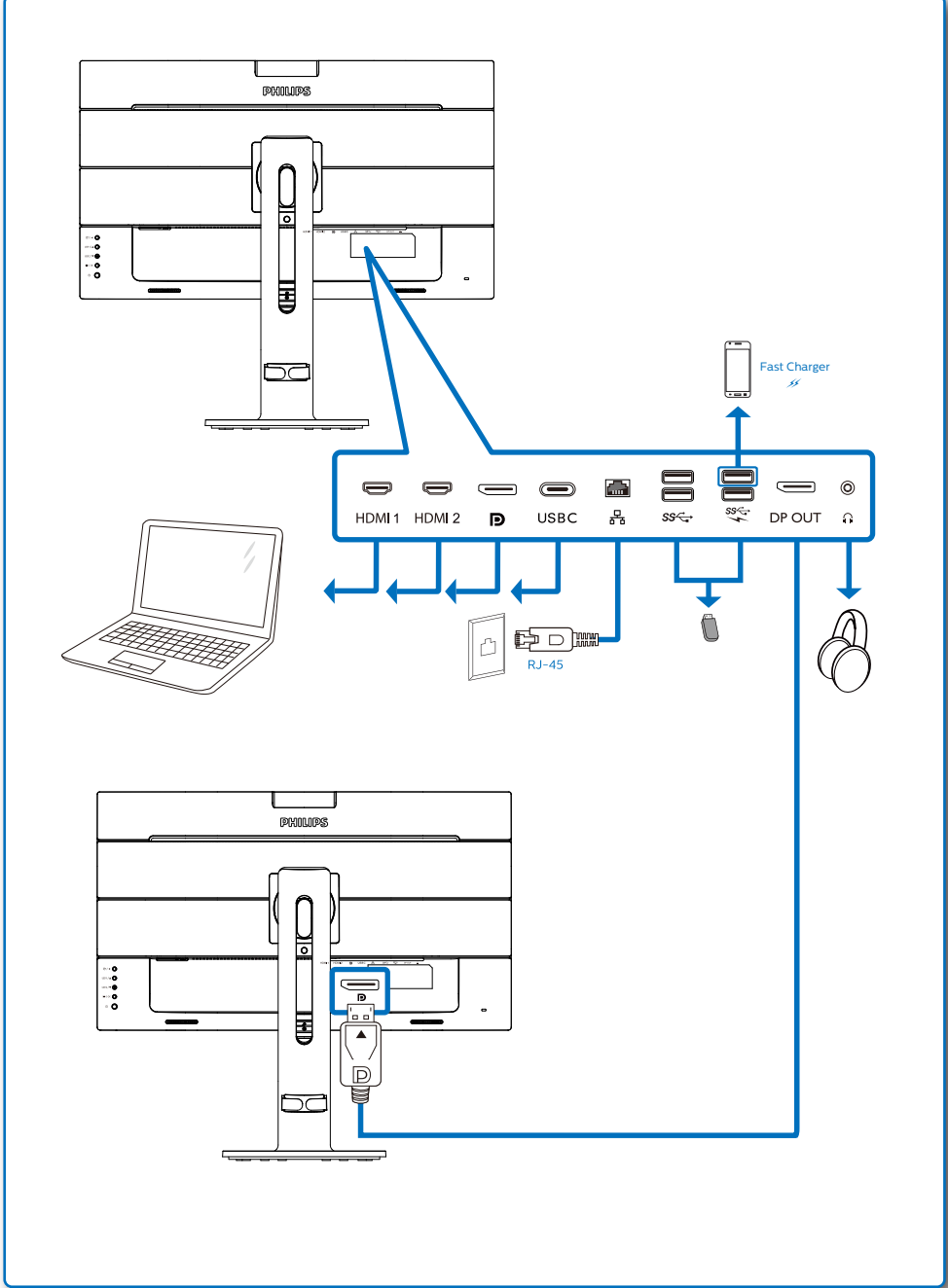
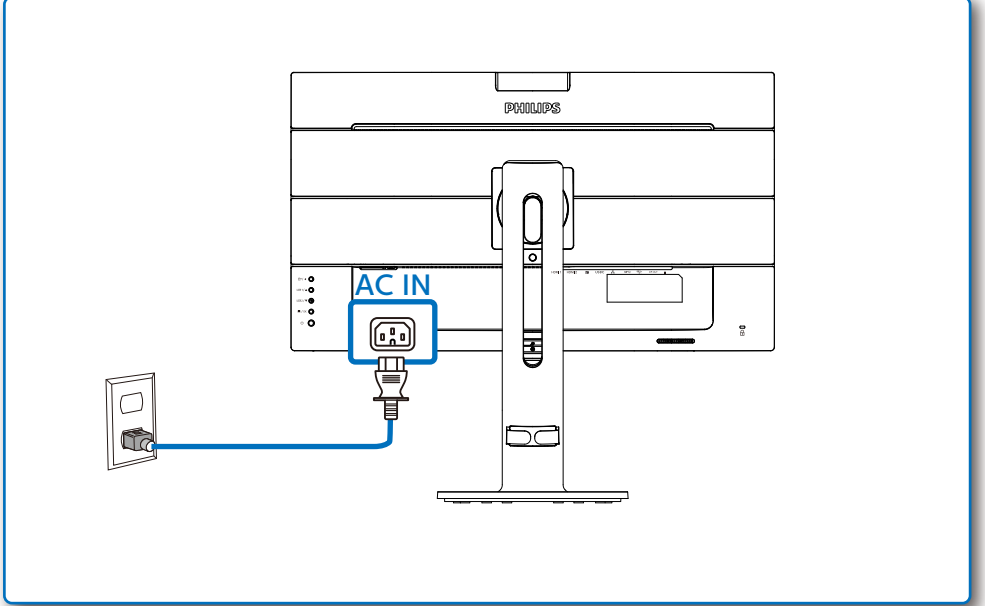
Register your product and get support at
www.philips.com/welcome



1



2



3

