



Philips Gaming Monitor  
Full HD gaming monitor

### Momentum 3000

24 (23.8"/60.5 cm diag.)  
1920 x 1080 (Full HD)

24M1N3200ZA

## Take gaming to the next level

This Philips gaming monitor is an ideal all-around display for intense PC games. A rapid 165 Hz refresh rate and 1 ms response time deliver smooth gameplay. Includes a visually immersive slim-frame display and Ultra Wide-Color.

#### The gaming advantage is yours

- AMD FreeSync™ Premium; tear free, stutter free, fluid gaming
- Certified NVIDIA® G-SYNC® compatible for smooth, fast gaming
- 165 Hz refresh rates for ultra-smooth, brilliant images
- 1 ms (MPRT) fast response for crisp images and smooth gameplay
- Low input lag reduces time delay between devices to monitor
- SmartImage game mode optimised for gamers

#### Immersive visuals

- IPS LED wide view technology for image and colour accuracy
- 16:9 Full HD display for crisp, detailed images
- Ultra Wide-Color wider range of colours for a vivid picture

#### Features designed for you

- LowBlue mode and Flicker-free easy-on-the eyes viewing
- Built-in stereo speakers for multimedia
- SmartErgoBase enables user-friendly ergonomic adjustments

# PHILIPS

Full HD gaming monitor  
Momentum 3000 24 (23.8"/60.5 cm diag.), 1920 x 1080 (Full HD)

24M1N3200ZA/00

# Highlights

## NVIDIA® G-SYNC® compatible



When playing intense games with high refresh rates, screen tearing may appear without optimal graphics synchronisation. This Philips Momentum display is certified as NVIDIA® G-SYNC® compatible, reducing screen tearing and syncing your monitor's refresh rate with your graphic card's output for a smoother gaming experience. Scenes appear instantly, objects look sharper, and gameplay is smooth, giving you a stunning visual experience and a serious competitive edge.

## AMD FreeSync™ Premium



Gaming shouldn't be a choice between choppy gameplay or broken frames. AMD FreeSync™ Premium equips serious gamers with a fluid, tear-free gameplay experience at peak performance. There are no compromises, game confidently with a high refresh rate, low framerate compensation and low latency.

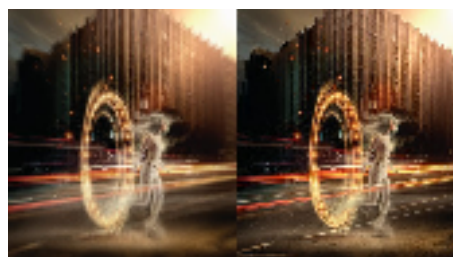
## 165 Hz Gaming



You play intense, competitive gaming. You demand display with lag free, ultra-smooth

images. This Philips display redraws the screen image up to 165 times per second, effectively faster than a standard display. A lower frame rate can make enemies appear to jump from spot to spot on the screen, making them difficult targets to hit. With 165 Hz frame rate, you get those critical missing images on the screen which shows enemy movement in ultra-smooth motion so you can easily target them. With ultra-low input lag and no screen tearing, this Philips display is your perfect gaming partner

## 1 ms MPRT fast response



MPRT (motion picture response time) is a more intuitive way to describe response time, which directly refers to the duration between seeing blurry noise and clean, crisp images. The Philips gaming monitor with 1 ms MPRT effectively eliminates smearing and motion blur and delivers sharper and more precise visuals to enhance your gaming experience. The best choice for playing thrilling and twitch-sensitive games.

## Low Input Lag



Input lag is the amount of time that elapses between performing an action with connected devices and seeing the result on screen. Low input lag reduces the time delay between entering a command from your devices to monitor, greatly improving play on twitch-

sensitive video games, particularly important for playing fast-paced, competitive games.

## SmartImage Game mode



The new Philips gaming display has quick-access OSD fine-tuned for gamers, offering you multiple options. "FPS" mode (First person shooting) improves dark themes in games, allowing you to see hidden objects in dark areas. "Racing" mode adapts the display with the fastest response time and high colour, along with image adjustments. "RTS" mode (Real-time strategy) has a special SmartFrame mode that enables highlighting of specific area and allows for size and image adjustments. Gamer 1 and Gamer 2 enable you to save personal customised settings based on different games, ensuring best performance.

## Built-in stereo speakers



A pair of high-quality stereo speakers built into a display device. They may be visible front firing, or invisible down firing, top firing, rear firing etc. depending on model and design.

AMD  
FreeSync  
Premium

NVIDIA  
G-SYNC

165Hz

1ms  
MPRT

Low Input Lag

SmartImage  
Game mode

IPS  
Panel

Wide Viewing Angle

SmartFrame

Built-in Speaker

# Specifications

## Picture/Display

- LCD panel type: IPS technology
- Backlight type: W-LED system
- Panel Size: 23.8 inch/60.5 cm
- Display Screen Coating: Anti-Glare, 3H, Haze 25%
- Effective viewing area: 527.04 (H) x 296.46 (V)
- Aspect ratio: 16:9
- Maximum resolution: 1920 x 1080 @ 165 Hz\*
- Pixel Density: 92.56 PPI
- Response time (typical): 4 ms (Grey to Grey)\*
- MPRT: 1 ms
- Low Input Lag
- Brightness: 250 cd/m<sup>2</sup>
- SmartContrast: Mega Infinity DCR
- Contrast ratio (typical): 1100:1
- Pixel pitch: 0.2745 x 0.2745 mm
- Viewing angle: 178° (H)/178° (V), @ C/R > 10
- Flicker-free
- Colour gamut (typical): NTSC 106%\*, sRGB 123.9%\*, Adobe RGB 90.4%\*
- Picture enhancement: SmartImage game
- Display colours: 16.7 M
- Scanning Frequency: 30 - 200 kHz (H) / 48 - 165 Hz (V)
- LowBlue Mode
- EasyRead
- sRGB
- G-SYNC: Compatible (DP)\*
- AMD FreeSync™ technology: Premium

## Connectivity

- Signal Input: HDMI 2.0 x 2, DisplayPort 1.2 x 1
- HDCP: HDCP 2.2 (HDMI / DP)
- Audio (In/Out): Audio out
- Sync Input: Separate Sync

## Convenience

- Built-in Speakers: 3 W x 2
- User convenience: Power On/Off, Menu/OK, Input/Up, Game Settings/Down, SmartImage game/Back
- OSD Languages: Brazil Portuguese, Czech, Dutch, English, Finnish, French, German, Greek, Hungarian, Italian, Japanese, Korean, Polish, Portuguese, Russian, Spanish, Simplified Chinese, Swedish, Turkish, Traditional Chinese, Ukrainian
- Other convenience: Kensington lock, VESA mount (100 x 100 mm)
- Plug and Play Compatibility: DDC/CI, Mac OS X, sRGB, Windows 10 / 8.1 / 8 / 7

## Stand

- Height adjustment: 130 mm

- Pivot: -/+ 90 degree
- Swivel: -/+ 45 degree
- Tilt: -5/20 degree

## Power

- On mode: 23.8 W (typ.)
- Standby mode: 0.5 W (typ.)
- Off mode: 0.3 W (typ.)
- Energy Label Class: F
- Power LED indicator: Operation - White, Standby mode - White (flashing)
- Power supply: External, 100–240 VAC, 50–60 Hz

## Dimensions

- Product with stand (max height): 540 x 513 x 213 mm
- Product without stand (mm): 540 x 321 x 43 mm
- Packaging in mm (W x H x D): 600 x 526 x 164 mm

## Weight

- Product with stand (kg): 3.78 kg
- Product without stand (kg): 2.40 kg
- Product with packaging (kg): 5.73 kg

## Operating conditions

- Temperature range (operation): 0°C to 40 °C
- Temperature range (storage): -20°C to 60 °C
- Relative humidity: 20%-80 %
- Altitude: Operation: +12,000 ft (3658 m), Non-operation: +40,000 ft (12,192 m)
- MTBF: 50 000 (Excluded backlight) hour(s)

## Sustainability

- Environmental and energy: RoHS
- Recyclable packaging material: 100 %
- Specific Substances: Mercury free, PVC/BFR free housing

## Compliance and standards

- Regulatory Approvals: CB, CE Mark, FCC Class B, ICES-003, CU-EAC, EAEU RoHS, TUV/ISO9241-307, TUV-BAUART

## Cabinet

- Colour: Black
- Finish: Textured

## What's in the box?

- Monitor with stand
- Cables: HDMI cable, DisplayPort cable, Power cable
- User Documentation



Issue date 2022-09-21

Version: 5.0.1

12 NC: 8670 001 79612  
EAN: 87 12581 78104 0

© 2022 Koninklijke Philips N.V.  
All Rights reserved.

Specifications are subject to change without notice.  
Trademarks are the property of Koninklijke Philips N.V.  
or their respective owners.

[www.philips.com](http://www.philips.com)

- \* "IPS" word mark / trademark and related patents on technologies belong to their respective owners.
- \* The maximum resolution works for either HDMI input or DP input.
- \* For best output performance, please always ensure that your graphic card is capable of achieving the maximum resolution and refresh rate of this Philips display.
- \* Response time value equal to SmartResponse
- \* MPRT adjusts the brightness for blur reduction, so the brightness cannot be adjusted while MPRT is turned on. To reduce motion blur, the LED backlight will strobe in time with the screen refresh rate, which may cause a noticeable change in brightness.
- \* MPRT is a gaming-optimised mode. Turning on MPRT may cause noticeable screen flickering. It is recommended to turn this mode off when you are not using the gaming function.
- \* NTSC Area based on CIE 1976
- \* sRGB Area based on CIE1931
- \* Adobe RGB Coverage based on CIE 1976
- \* NVIDIA® G-SYNC® support interface: DisplayPort
- \* Make sure to update NVIDIA® G-SYNC® driver to the latest version, see more information on NVIDIA website: <https://www.nvidia.com/>
- \* Make sure that your graphic card supports NVIDIA® G-SYNC®
- \* 2020 Advanced Micro Devices, Inc. All rights reserved. AMD, the AMD Arrow logo, AMD FreeSync™ and combinations thereof are trademarks of Advanced Micro Devices, Inc. Other product names used in this publication are for identification purposes only and may be trademarks of their respective companies.
- \* The monitor may look different from feature images.