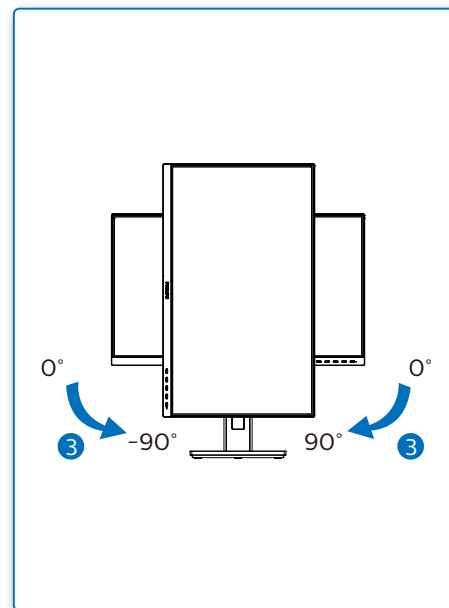
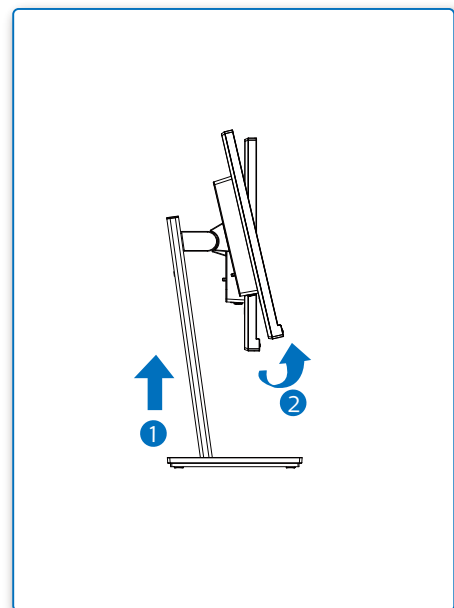
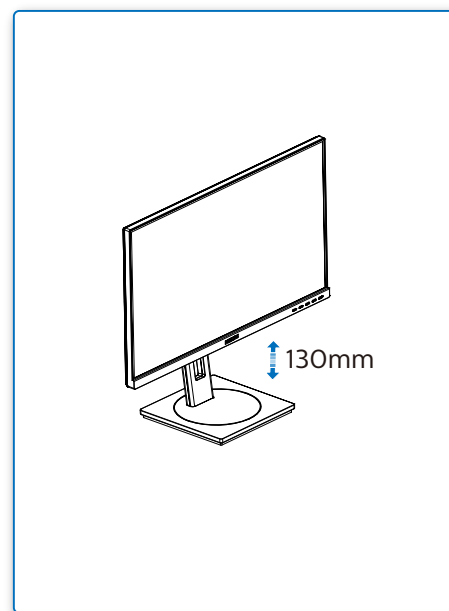
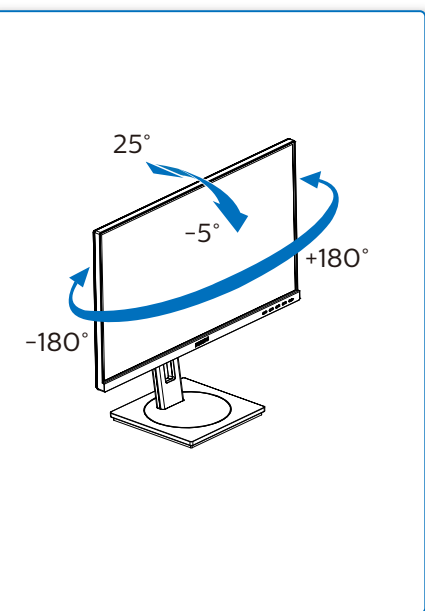
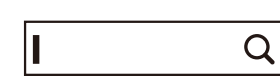


4



Register your product and get support at  
[www.philips.com/support](http://www.philips.com/support)



FAQ

Software  
SmartControlUser  
Manual

Version: M10242SQIT  
2020 © TOP Victory Investments Ltd. All rights reserved.

This product has been manufactured by and is sold under the responsibility of Top Victory Investments Ltd., and Top Victory Investments Ltd. is the warrantor in relation to this product. Philips and the Philips Shield Emblem are registered trademarks of Koninklijke Philips N.V. and are used under license.

Specifications are subject to change without notice.

**HDMI**

The terms HDMI, HDMI High-Definition Multimedia Interface, and the HDMI Logo are trademarks or registered trademarks of HDMI Licensing Administrator, Inc.

[www.philips.com](http://www.philips.com)

Energy Labelling

242S1AE



Printed in China



H41G78S281346F

PHILIPS

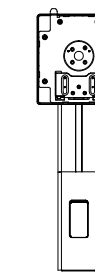
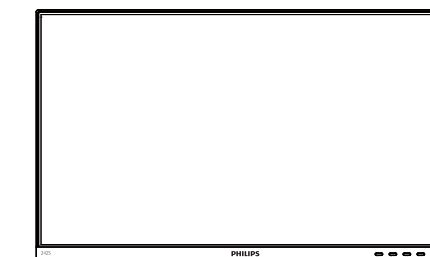
S Line

242S1

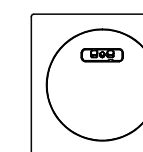


# Quick Start

Register your product and get support at  
[www.philips.com/welcome](http://www.philips.com/welcome)



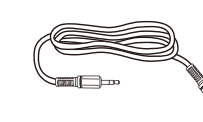
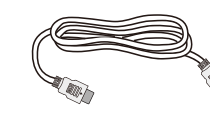
Power



\*DP

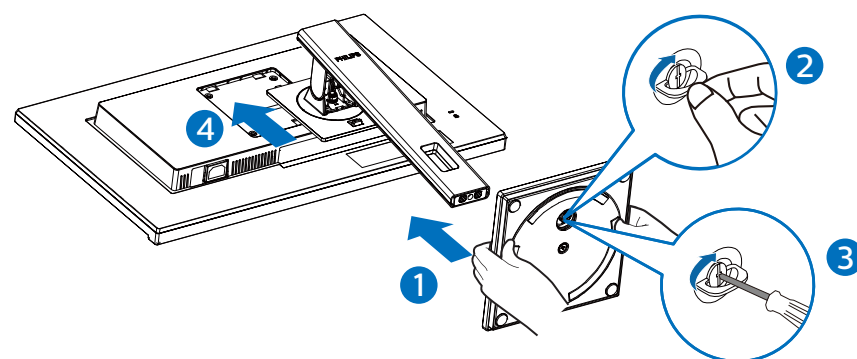


\*VGA

\* Audio cable  
(242S1AE)\* DVI  
(242S1AE)\*HDMI  
(242S1AE)

\*Different according to region  
Display design may differ from that illustrated

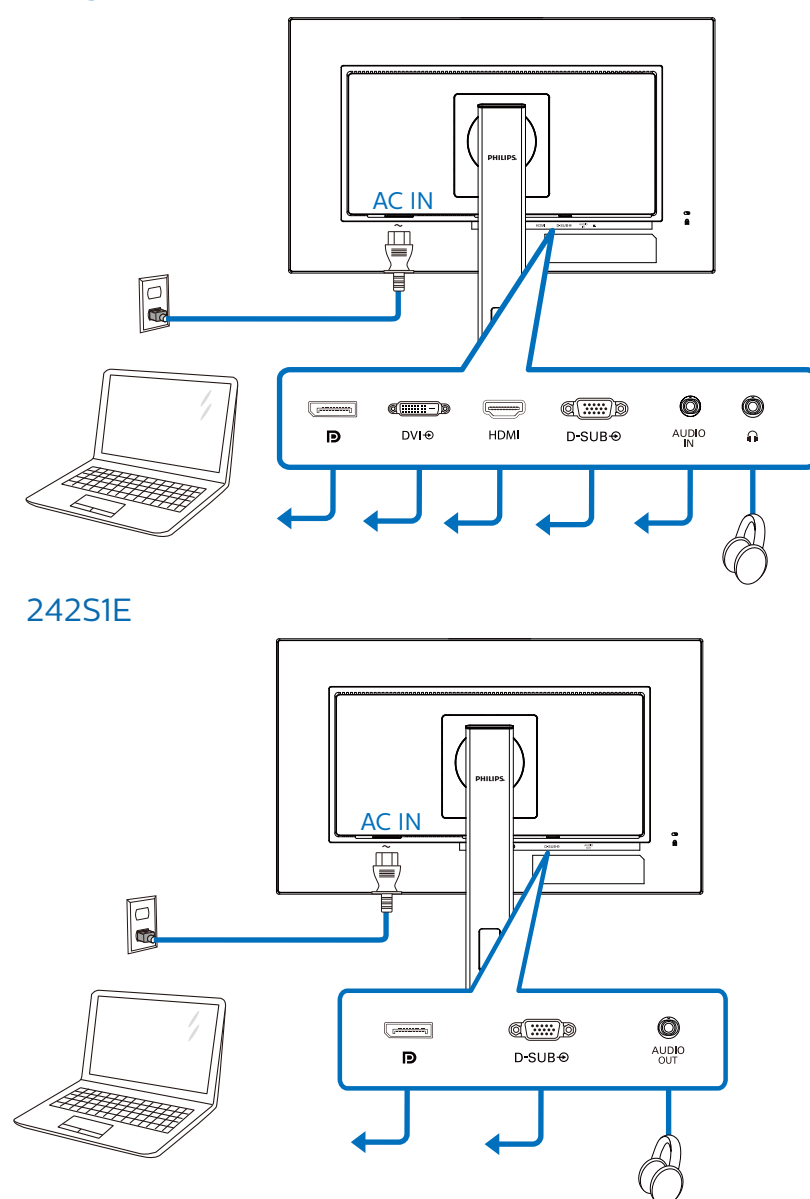
1



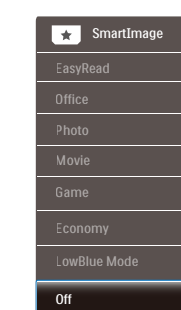
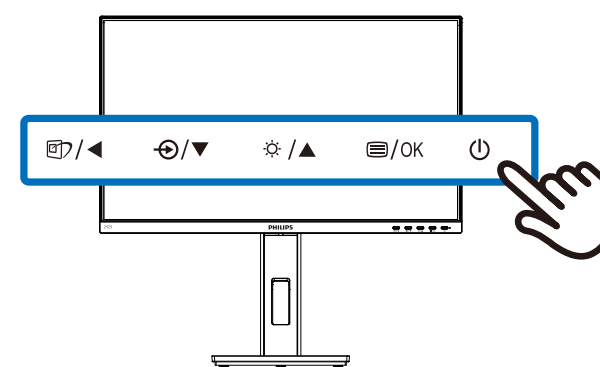
2

242S1AE

242S1E



3



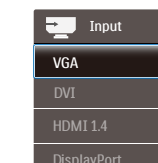
242S1AE

Brightness: 80

242S1E

Brightness: 90

242S1AE



242S1E

