

Philips Gaming Monitor
Full HD gaming monitor

Momentum 3000

27" (68.5 cm)
1920 x 1080 (Full HD)

27M1N3200Z



Take gaming to the next level

This Philips gaming monitor is an ideal all-around display for intense PC games. Sync technology, rapid 165Hz refresh rate and 1ms response time deliver smooth gameplay. Includes a visually immersive slim-frame display and Ultra Wide-Color.

The gaming advantage is yours

- AMD FreeSync™ Premium; tear free, stutter free, fluid gaming
- Certified NVIDIA® G-SYNC® compatible for smooth fast gaming
- 165Hz refresh rates for ultra-smooth, brilliant images
- 1ms (MPRT) fast response for crisp image and smooth gameplay
- Low input lag reduces time delay between devices to monitor
- SmartImage game mode optimized for gamers

Immersive visuals

- IPS LED wide view technology for image and color accuracy
- Ultra Wide-Color wider range of colors for a vivid picture
- 16:9 Full HD display for crisp detailed images
- SmartContrast for rich black details

Features designed for you

- SmartErgoBase enables people-friendly ergonomic adjustments
- EasySelect menu toggle key for quick on-screen menu access

PHILIPS

Full HD gaming monitor
Momentum 3000 27" (68.5 cm), 1920 x 1080 (Full HD)

27M1N3200Z/75

Highlights

AMD FreeSync™ Premium



Gaming shouldn't be a choice between choppy gameplay or broken frames. AMD FreeSync™ Premium equips serious gamers with a fluid, tear-free gameplay experience at peak performance. There are no compromises, game confidently with a high refresh rate, low framerate compensation, and low latency.

NVIDIA® G-SYNC® compatible



When playing intense games with high refresh rates, screen tearing may appear without optimal graphics synchronization. This Philips Momentum display is certified as NVIDIA® G-SYNC® compatible, reducing screen tearing and syncing your monitor's refresh rate with your graphic card's output for a smoother gaming experience. Scenes appear instantly, objects look sharper, and gameplay is smooth, giving you a stunning visual experience and a serious competitive edge.

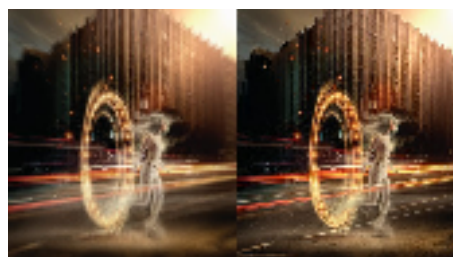
165Hz Gaming



You play intense, competitive gaming. You demand display with lag free, ultra-smooth

images. This Philips display redraws the screen image up-to 165 times per second, effectively faster than a standard display. A lower frame rate can make enemies appear to jump from spot to spot on the screen, making them difficult targets to hit. With 165Hz frame rate, you get those critical missing images on the screen which shows enemy movement in ultra-smooth motion so you can easily target them. With ultra-low input lag and no screen tearing, this Philips display is your perfect gaming partner

1ms MPRT fast response



MPRT (motion picture response time) is more intuitive way to describe the response time, which directly refers the duration from seeing blurry noise to clean and crisp images. Philips gaming monitor with 1 ms MPRT effectively eliminates smearing and motion blur, delivers sharper and precise visuals to enhance gaming experience. Best choice for playing thrilling and twitch-sensitive games.

Low Input Lag



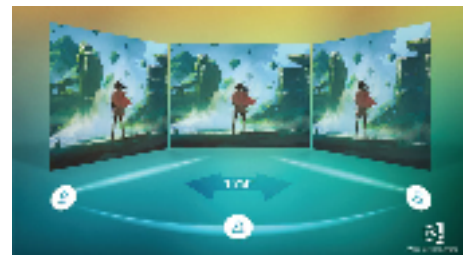
Input lag is the amount of time that elapses between performing an action with connected devices and seeing the result on screen. Low input lag reduces the time delay between entering a command from your devices to monitor, greatly improve on playing twitch-sensitive video games, particularly important to whom plays fast-paced, competitive games.

SmartImage Game mode

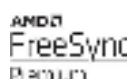


The new Philips gaming display has quick access OSD fine tuned for gamers, offering you multiple options. "FPS" mode (First person shooting) improves dark themes in games, allowing you to see hidden objects in dark areas. "Racing" mode adapts display with fastest response time, high color, along with image adjustments. "RTS" mode (Real time strategy) has a special SmartFrame mode which enables highlighting of specific area and allows for size and image adjustments. Gamer 1 and Gamer 2 enable you to save personal customized settings based on different games, ensuring best performance.

IPS technology



IPS displays use an advanced technology which gives you extra wide viewing angles of 178/178 degree, making it possible to view the display from almost any angle. Unlike standard TN panels, IPS displays gives you remarkably crisp images with vivid colors, making it ideal not only for Photos, movies and web browsing, but also for professional applications which demand color accuracy and consistent brightness at all times.



Specifications

Picture/Display

- LCD panel type: IPS technology
- Backlight type: W-LED system
- Panel Size: 27 inch / 68.5 cm
- Display Screen Coating: Anti-Glare, 3H, Haze 25%
- Effective viewing area: 597.888 (H) x 336.312 (V)
- Aspect ratio: 16:9
- Maximum resolution: 1920 x 1080 @ 165 Hz*
- Pixel Density: 81.59 PPI
- Response time (typical): 4 ms (Gray to Gray)*
- MPRT: 1 ms
- Low Input Lag
- Brightness: 250 cd/m²
- SmartContrast: Mega Infinity DCR
- Contrast ratio (typical): 1100:1
- Pixel pitch: 0.3114 x 0.3114 mm
- Viewing angle: 178° (H) / 178° (V), @ C/R > 10
- Flicker-free
- Color gamut (typical): NTSC 107%*, sRGB 122%*, Adobe RGB 90.4%*
- Picture enhancement: SmartImage game
- Display colors: 16.7 M
- Scanning Frequency: HDMI: 30 - 160 kHz (H) / 48 - 165 Hz (V); DP: 30 - 200 kHz (H) / 48 - 165 Hz (V)
- LowBlue Mode
- EasyRead
- sRGB
- AMD FreeSync™ technology: Premium
- G-SYNC: Compatible*

Connectivity

- Signal Input: HDMI 2.0 x 2, DisplayPort 1.2 x 1
- HDCP: HDCP 1.4 (HDMI / DP), HDCP 2.2 (HDMI / DP)
- Audio (In/Out): Audio out
- Sync Input: Separate Sync

Convenience

- User convenience: Power On/Off, Menu/OK, Input/Up, Game Settings/Down, SmartImage game/Back
- OSD Languages: Brazil Portuguese, Czech, Dutch, English, Finnish, French, German, Greek, Hungarian, Italian, Japanese, Korean, Polish, Portuguese, Russian, Spanish, Simplified Chinese, Swedish, Turkish, Traditional Chinese, Ukrainian
- Other convenience: Kensington lock, VESA mount (100x100mm)
- Plug & Play Compatibility: DDC/CI, Mac OS X,

sRGB, Windows 10 / 8.1 / 8 / 7

Stand

- Height adjustment: 130 mm
- Pivot: -/+ 90 degree
- Swivel: -/+ 45 degree
- Tilt: -5/20 degree

Power

- On mode: 28.2 W (typ.)
- Standby mode: 0.5 W (typ.)
- Off mode: 0.3 W (typ.)
- Power LED indicator: Operation - White, Standby mode- White (blinking)
- Power supply: Internal, 100-240VAC, 50-60Hz

Dimensions

- Product with stand(max height): 612 x 543 x 236 mm
- Product without stand (mm): 612 x 365 x 55 mm
- Packaging in mm (WxHxD): 780 x 521 x 224 mm

Weight

- Product with stand (kg): 5.30 kg
- Product without stand (kg): 3.70 kg
- Product with packaging (kg): 9.96 kg

Operating conditions

- Temperature range (operation): 0°C to 40 °C
- Temperature range (storage): -20°C to 60 °C
- Relative humidity: 20%-80 %
- Altitude: Operation: +12,000ft (3,658m), Non-operation: +40,000ft (12,192m)
- MTBF: 50,000 (Excluded backlight) hour(s)

Sustainability

- Environmental and energy: RoHS
- Recyclable packaging material: 100 %
- Specific Substances: Mercury free, PVC / BFR free housing

Compliance and standards

- Regulatory Approvals: CB, CE Mark, FCC Class B, ICES-003, MEPS, RCM

Cabinet

- Color: Black
- Finish: Textured



Issue date 2022-08-16

Version: 3.0.1

12 NC: 8670 001 84479
EAN: 87 12581 79519 1

© 2022 Koninklijke Philips N.V.
All Rights reserved.

Specifications are subject to change without notice.
Trademarks are the property of Koninklijke Philips N.V.
or their respective owners.

www.philips.com

* "IPS" word mark / trademark and related patents on technologies belong to their respective owners.
* The maximum resolution works for either HDMI input or DP input.
* For best output performance, please always ensure that your graphic card is capable of achieving the maximum resolution and refresh rate of this Philips display.
* Response time value equal to SmartResponse
* MPRT is to adjust brightness for blur reduction, so cannot adjust brightness while MPRT is turned on. To reduce motion blur, LED backlight will strobe synchronously with screen refresh, which may cause noticeable brightness change.
* MPRT is gaming-optimized mode. Turn on MPRT may cause noticeable screen flickering. It is recommended to turn off when you are not using the gaming function.
* NTSC Area based on CIE1976
* sRGB Area based on CIE1931
* Adobe RGB Coverage based on CIE1976
* 2020 Advanced Micro Devices, Inc. All rights reserved. AMD, the AMD Arrow logo, AMD FreeSync™ and combinations thereof are trademarks of Advanced Micro Devices, Inc. Other product names used in this publication are for identification purposes only and may be trademarks of their respective companies.
* NVIDIA® G-SYNC® support interface: DisplayPort
* Make sure to update NVIDIA® G-SYNC® driver to the latest version, see more information on NVIDIA website: <https://www.nvidia.com/>
* Make sure your graphic card supports NVIDIA® G-SYNC®
* The monitor may look different from feature images.