

Dell 27 Monitor

G2722HS

Dell Display Manager

User's Guide

Model: G2722HS
Regulatory model: G2722HSt





NOTE: A NOTE indicates important information that helps you make better use of your computer.

Copyright © 2022 Dell Inc. or its subsidiaries. All rights reserved. Dell, EMC, and other trademarks are trademarks of Dell Inc. or its subsidiaries. Other trademarks may be trademarks of their respective owners.

2022 – 01

Rev. A00

Contents


- Overview4
- Using the Quick Settings Dialog.....5
- Setting Basic Display Functions.....7
- Assigning Preset Modes to Applications8
- Organise Windows with Easy Arrange9
- Managing Multiple Video Inputs..... 11
- Restoring Application Positions 12
- Applying Energy Conservation Features 13
- Other Shortcut Keys 14
- Attaching Dell Display Manager to active windows (Windows 10 only) 15
- Troubleshooting 16

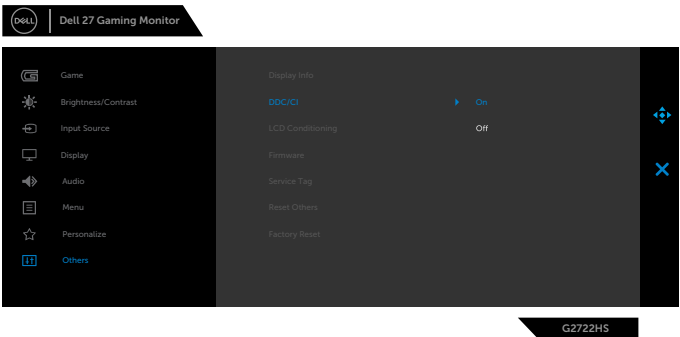


Overview

Dell Display Manager is a Microsoft Windows application used to manage a monitor or a group of monitors. It allows manual adjustment of the displayed image, assignment of automatic settings, energy management, window organization, image rotation, and other features on selected Dell monitors. Once installed, Dell Display Manager runs each time when the system starts and can be easily accessed from the Windows notification tray. Information about monitors connected to the system is available when hovering over the notification-tray icon.



 **NOTE:** Dell Display Manager uses DDC/CI channel to communicate with your monitor. Ensure DDC/CI is enabled under the **Others** menu as follows.



Using the Quick Settings Dialog

Clicking Dell Display Manager's notification tray icon opens the **Quick Settings** dialog box. When more than one supported Dell monitors are connected to the computer, a specific target monitor can be selected using the menu. The **Quick Settings** dialog box enables you to easily adjust the brightness, contrast, resolution, window layout, and so on. It also allows you to enable automatic switching between preset modes or to select a preset mode manually.



The **Quick Settings** dialog box also provides access to Dell Display Manager's advanced user interface that is used to adjust basic functions, configure auto mode and access other features.



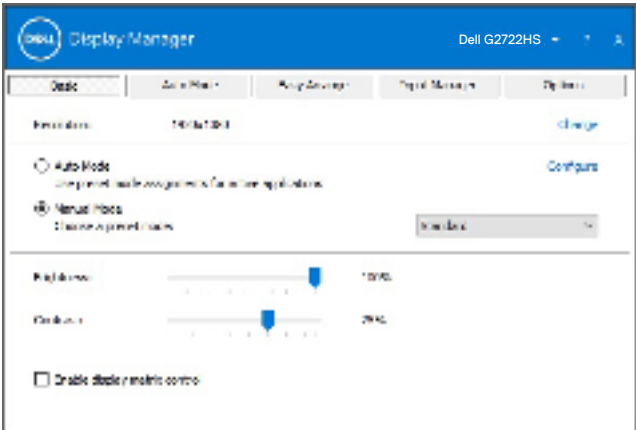
**NOTE:**


Feature	Function	Description
Quick Dell Display Manager Access	Quick key to call up Dell Display Manager UI	<ul style="list-style-type: none">• Ctrl+Shift+D
	Control individual monitor in multiple monitor setup	<ul style="list-style-type: none">• Select the monitor from the dropdown box.• If more than one monitor is connected to your computer, an icon appears on the selected monitor for a second so you know which monitor you have selected.• Move Dell Display Manager UI to the monitor to be controlled.• Press Ctrl+Shift+D to bring up the miniUI under the mouse pointer.

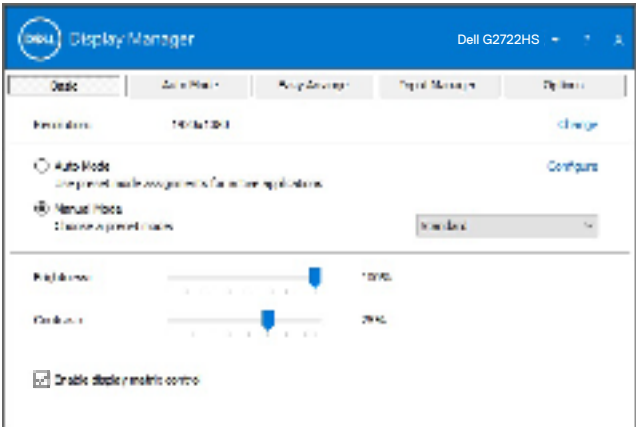


Setting Basic Display Functions

You can select **Manual Mode** that enables you to manually select a preset mode or select **Auto Mode** that applies a preset mode based on the active application. An on-screen message displays the current preset mode whenever it changes. The selected display's **Brightness** and **Contrast** can also be directly adjusted from the **Basic** tab.



 **NOTE:** When multiple Dell monitors are connected, select “Enable display matrix control” to apply brightness, contrast and color presets controls to all monitors.



Assigning Preset Modes to Applications

The **Auto Mode** tab allows you to associate a specific **Preset Mode** with a specific application, and apply it automatically. When **Auto Mode** is enabled, Dell Display Manager automatically switches to the corresponding **Preset Mode** whenever the associated application is activated. The **Preset Mode** assigned to a particular application may be the same on each connected monitor, or it can vary from one monitor to another.

Dell Display Manager is pre-configured for many popular applications. To add a new application to the assignment list, simply drag the application from the desktop, Windows Start Menu, or elsewhere, and drop it onto the current list.

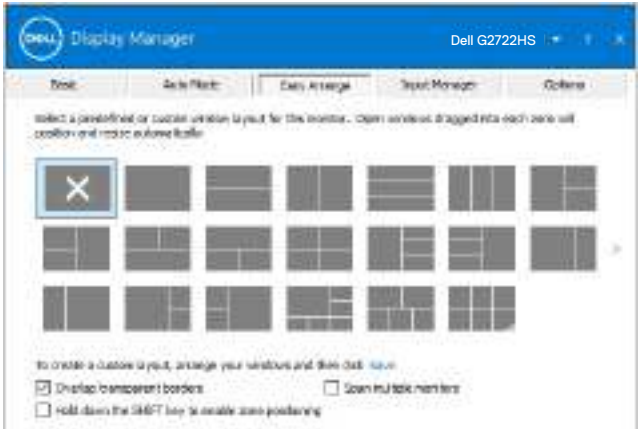
 **NOTE: Preset Mode assignments for batch files, scripts, loaders, and non-executable files such as zip archives or packed files, are not supported.**

You can also configure the Game preset mode to be used whenever a DirectX3D application runs in full-screen mode. To prevent an application from using mode, assign a different preset mode to it.



Organise Windows with Easy Arrange

Easy Arrange enables you to effectively organise your application windows on the desktop. You first choose a pre-defined layout pattern which suits your work, then you just need to drag the application windows into the defined zones. Click on “>” or use Page Up/Page Down key to find more layouts. To create a custom layout, arrange the open windows and then click **Save**.

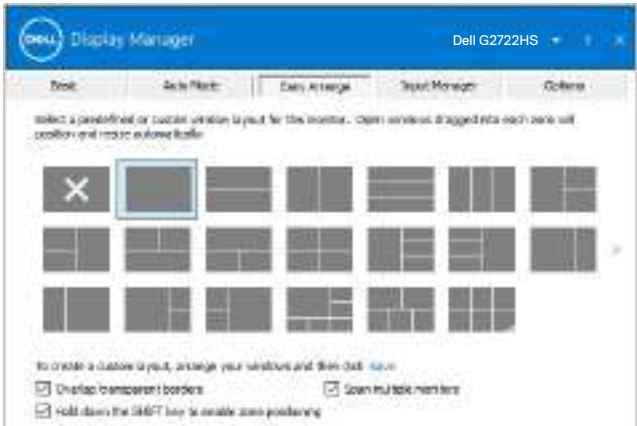


For Windows 10, you can apply different window layouts for each of the virtual desktops.

If you often use Windows snap feature, you can select “**Hold down the SHIFT key to enable zone positioning**”. This gives Windows snap priority over **Easy Arrange**. You will then need to hold down the Shift key to use **Easy Arrange** positioning.




If you are using multiple similar monitors in an array or matrix, **Easy Arrange** layout can be applied across to all the monitors as one desktop. Select “**Span multiple monitors**” to enable this feature. To make it effective, ensure that the grouped monitors have the same resolution and are physically arranged properly.



There are other advanced usage of **Easy Arrange**. Refer to table below.

Feature	Function	Description
Enhanced Easy Arrange	Custom layouts	<ul style="list-style-type: none"> Save and name five customized Easy Arrange patterns. Configure x*y patterns.
	6 MRU (most-recently-used) layouts	<ul style="list-style-type: none"> Press Ctrl+Shift+Home to cycle among the last six MRU layouts.
	On the fly partition resizing	<ul style="list-style-type: none"> Hold down Ctrl while resizing current Easy Arrange layout to adjust the size and numbers of cells in a layout. Newly formed Easy Arrange pattern is saved into the Easy Arrange icon position. Hold down Ctrl while clicking on a modified layout icon to restore it to default layout.
	Easy Arrange layouts for portrait mode	<ul style="list-style-type: none"> Portrait mode Easy Arrange icons are presented when monitor is rotated.

 **NOTE:** Some applications require a minimum effective resolution for its window. Such application may not fit in an Ease Arrange zone if the zone is smaller than the required window size.

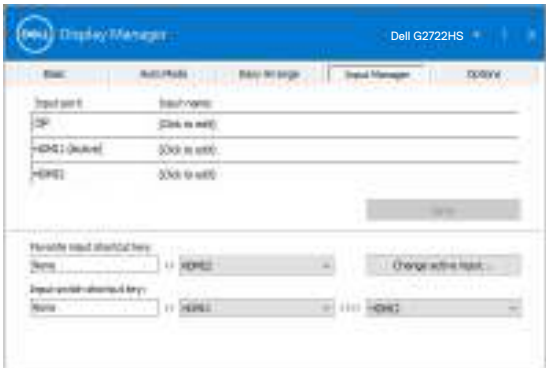


Managing Multiple Video Inputs

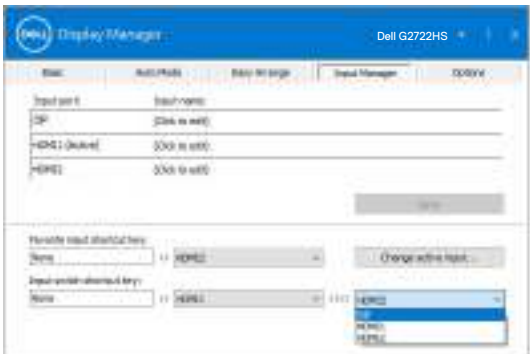
The **Input Manager** tab provides convenient ways for you to manage multiple video inputs connected to your Dell monitor. It makes it very easy to switch between inputs while you work with multiple computers.


All video input ports available to your monitor are listed. You can give each input a name as you like. Please save your changes after editing.

You can define a shortcut key to quickly switch to your favorite input and another shortcut key to quickly switch between two inputs if you often work between them.



You can use the dropdown list to switch to any input source.

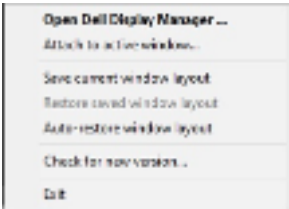


 **NOTE:** Dell Display Manager communicates with your monitor even when the monitor is displaying video from another computer. You can install Dell Display Manager on the computer you frequently use and control input switching from it. You may also install Dell Display Manager on other computers connected to the monitor.



Restoring Application Positions

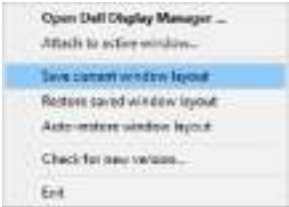
Dell Display Manager can help you restore application windows into their positions when you reconnect your computer to the monitor(s). You can quickly access to this feature by right-clicking on Dell Display Manager icon in the notification tray.



If you choose “**Auto-restore window layout**”, your application windows’ positions are tracked and remembered by Dell Display Manager. Dell Display Manager automatically puts the application windows into their original positions when you reconnect your computer to your monitor(s).



To go back to a favorite layout , first then“**Save current window layout**” and then “**Restore saved window layout**”.



You may use monitors with different models or resolutions in your daily routine, and you may apply different window layouts on them. Dell Display Manager is able to know the monitor you have reconnected and restore application positions accordingly.

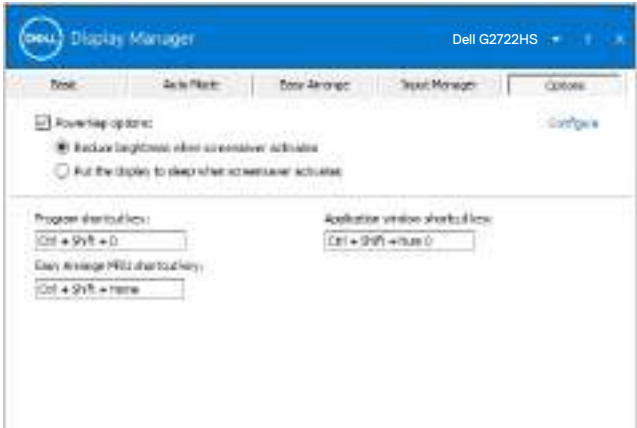
In case you need to replace a display in a monitor matrix configuration, you can save the window layout before replacement and restore the layout after a new monitor is installed.

 **NOTE: You should keep your applications running in order to benefit from this feature. Dell Display Manager doesn’t launch applications.**

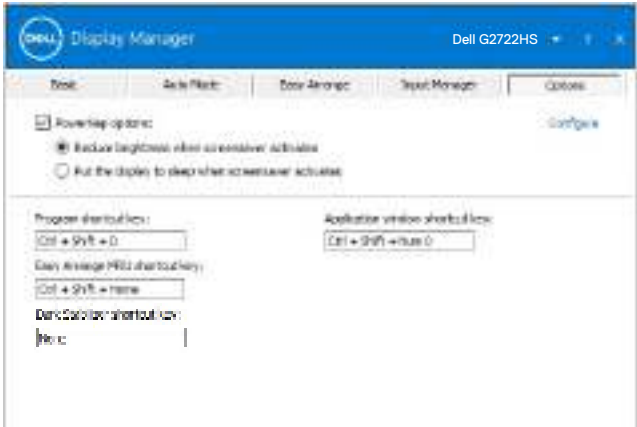


Applying Energy Conservation Features

On supported Dell models, an **Options** tab is available that provides **PowerNap** energy conservation options. You can choose to set the display's brightness to the minimum level, or to put the display to sleep when the screensaver is activated.



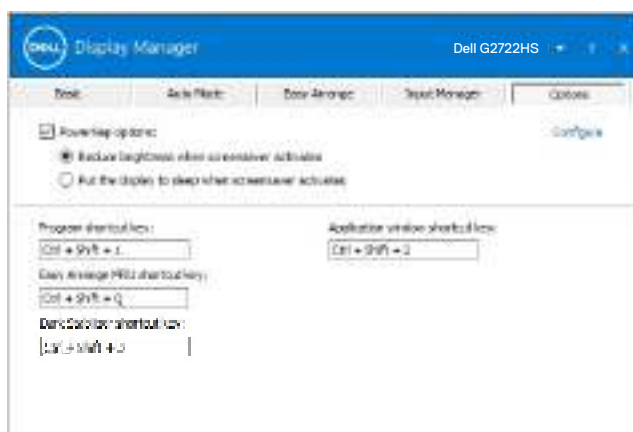
NOTE: The Dark Stabilizer shortcut key is available only when you select FPS game, RTS game, RPG game, SPORTS game, Game1, Game2 or Game3 preset mode.



Other Shortcut Keys

You can define the shortcut keys for quick access to the following Dell Display Manager functions:

- ♦ **Program shortcut key:** Open the **Quick Settings** dialog box.
- ♦ **Easy Arrange MRU shortcut key:** Apply the five recently used window layouts.
- ♦ **Application window shortcut key:** Launch a quick menu for options under **Auto Mode** and **Easy Arrange**.
- ♦ **Dark Stabilizer shortcut key:** Quickly adjust the level of **Dark Stabilizer**. This is only available for **Game** preset modes.

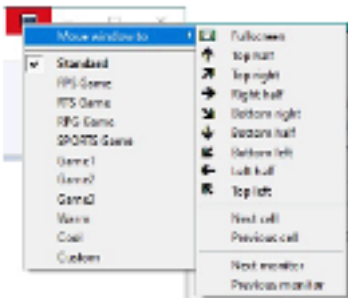


Attaching Dell Display Manager to active windows (Windows 10 only)

In Windows 10, you can add the Dell Display Manager shortcut icon to the toolbar region of active windows. To activate this feature, right-click on the Dell Display Manager icon in the notification tray and choose **Attach to active window** from the opened menu.

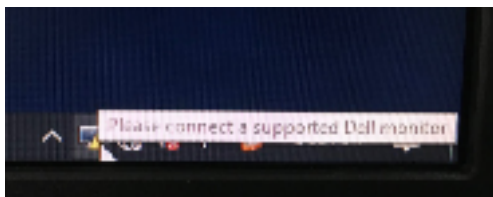


Once you right-click the icon in the toolbar, a quick menu of Dell Display Manager appears, displaying options under **Auto Mode** and **Easy Arrange** for you to easily make adjustments.

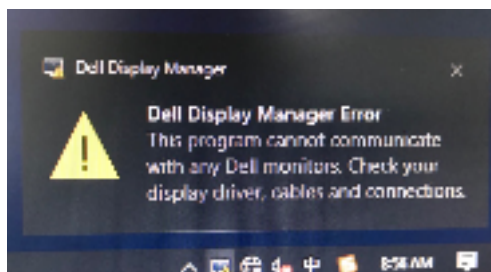


Troubleshooting

If Dell Display Manager does not work with your monitor, It will show the following icon in your notification tray.



Click on the icon, Dell Display Manager shows a more detailed error message.



Please note that Dell Display Manager only works with Dell-branded monitors. If you are using monitors from other manufacturers, Dell Display Manager does not support them.

If Dell Display Manager is unable to detect and/or communicate with a supported Dell monitor, please take the following actions to troubleshoot:

1. Make sure the video cable is properly connected to your monitor and your computer. especially the connectors should be firmly inserted into position.
2. Check the monitor OSD to ensure DDC/CI is enabled.
3. Make sure you have the correct and latest graphics card driver from the graphics vendor (Intel, AMD, NVidia, etc.). Graphics card driver is often the cause of Dell Display Manager failure.
4. Remove any docking stations or cable extenders or converters between the monitor and the graphics port. Some low-cost extenders, hubs or converters may not support DDC/CI properly and can fail Dell Display Manager. Update the driver of such device if the latest version is available.
5. Restart your computer.



Dell Display Manager may not work with the following monitors:

- Dell monitor models earlier than year 2013 and D-series of Dell monitors. For more information, see <https://www.dell.com/support/monitors>.
- Gaming monitors using Nvidia-based G-sync technology
- Virtual and wireless monitors do not support DDC/CI
- Some early models of DP 1.2 monitors. It may be necessary to disable MST/DP 1.2 using the display OSD.

If your computer is connected to the Internet, you will be prompted to upgrade to a newer version of Dell Display Manager when it is available. It is recommended to download and install the latest Dell Display Manager application.

You may also check for new version by right clicking on Dell Display Manager icon.

