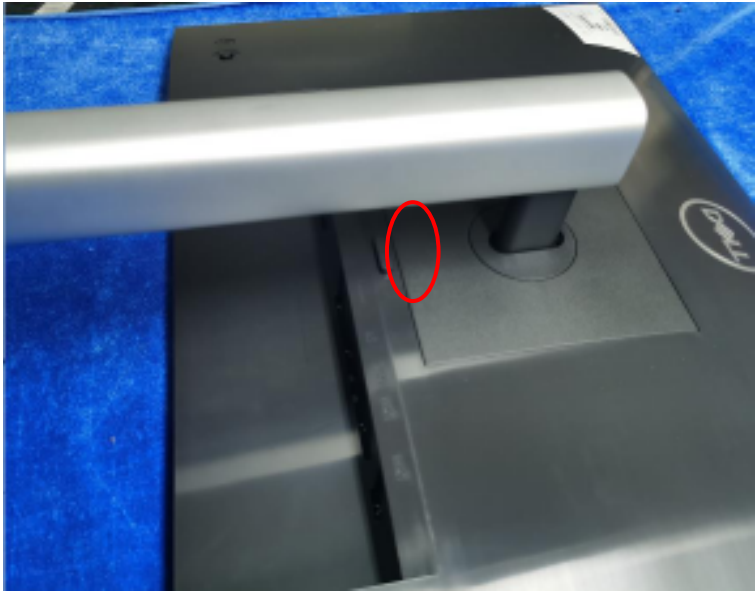
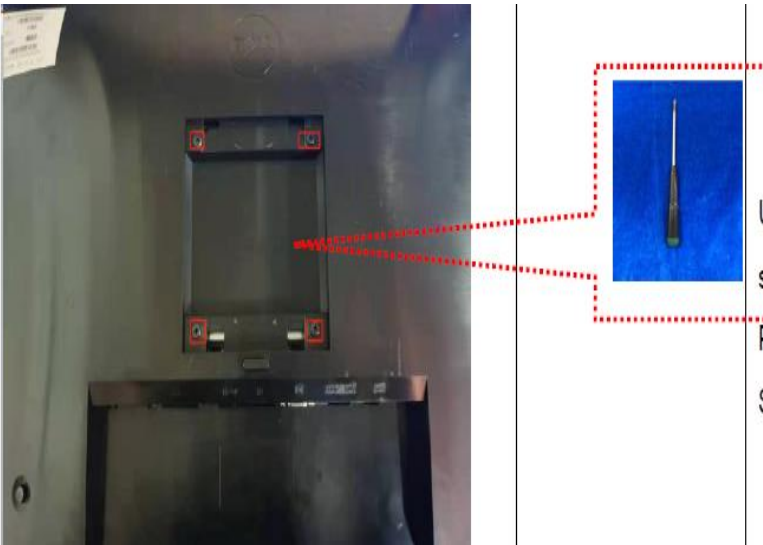



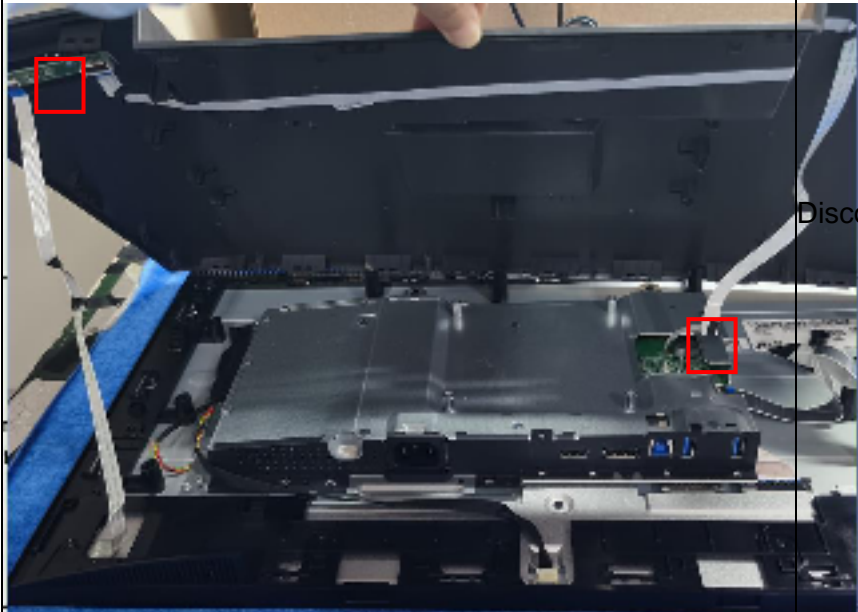
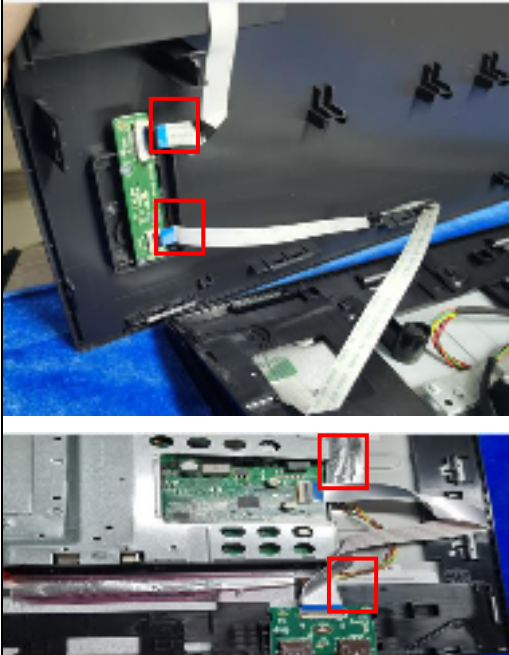
1.Mechanical Instruction

1.1Disassembly Procedures

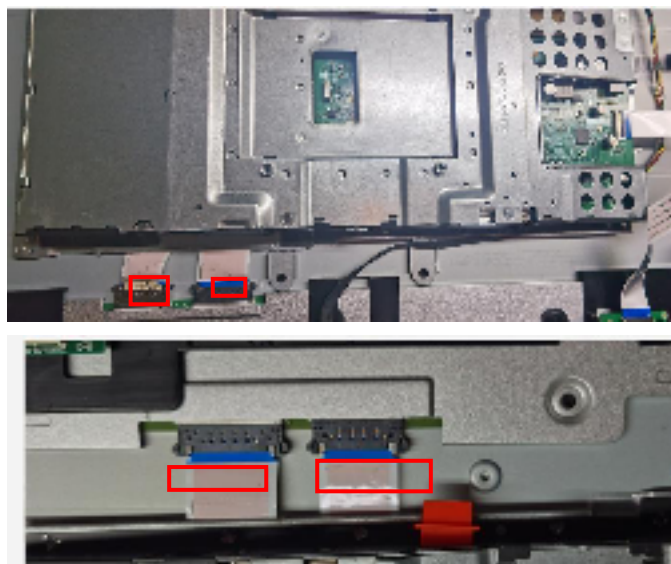
Tools: 2 Power screwdrivers ($\varphi=5\text{mm}$, $L=60\text{mm}$); 1 small cross screwdriver; turnbuckle driver;

Setting: Power screwdriver torque $A=6\text{ kgF.Cm}$

Step	Figure	Remark
Remove Stand ass'y		Press the button marked red and remove the stand ass'y
Remove the rear cover		Remove the 4 pcs screws .

		<p>Use scraper to insert from the right side and then open the rear cover</p>
<p>Remove the rear cover</p>		<p>Disconnect the cables</p>
		<p>open the cover on the keyboard/ usb board and then pull out the cables</p>

Remove the
mainframe

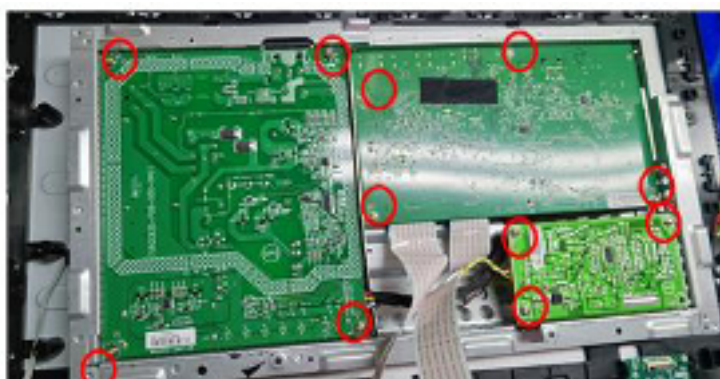


Remove the two
screws on the
mainframe and then
disconnect the FFC
cables

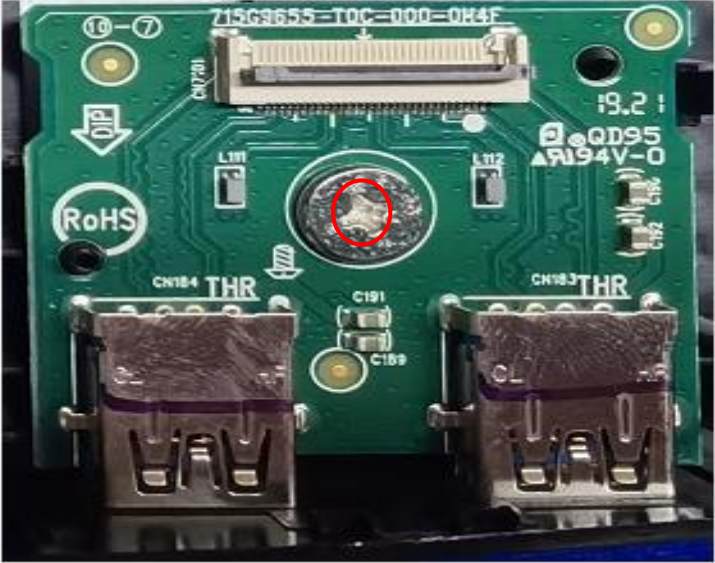

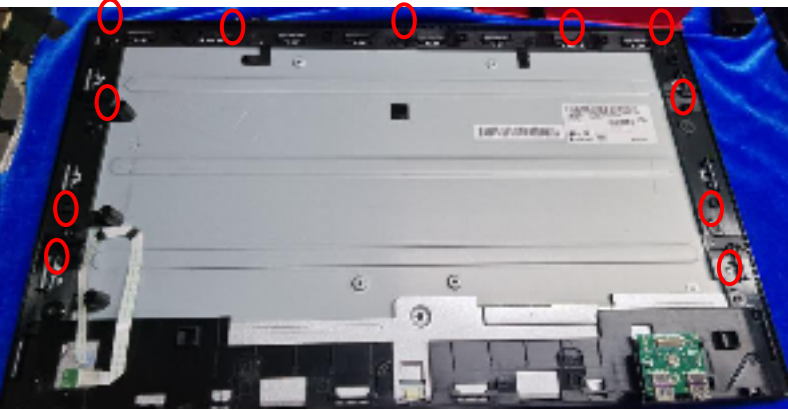
Remove the mylar





Remove the
powerbard and
mainboard and
converter board



Remove the screws on
the mainboard and
power board

<p>Remove the usb board</p>	 <p>A close-up photograph of a green printed circuit board (PCB) for a USB interface. The board features a USB Type-A connector at the top, two RJ45 ports at the bottom, and various electronic components like capacitors and resistors. A single screw in the center of the board is circled in red, indicating it should be removed.</p>	<p>Remove the screw on the usb board</p>
<p>Remove the keyboard</p>	 <p>A close-up photograph of a green printed circuit board (PCB) for a keyboard. The board has a USB connector on the left and a ribbon cable connector on the right. Three screws are circled in red: one on the left side, one in the center, and one on the right side, indicating they should be removed.</p>	<p>Remove the 3pcs screws on the keyboard</p>
<p>Remove the middle frame</p>	 <p>A photograph showing the internal middle frame of a device, which is a large, flat, silver-colored metal plate. It is surrounded by a blue protective cloth. Multiple screws along the perimeter of the frame are circled in red, indicating they should be removed.</p>	<p>Remove the screws on the middle frame</p>

Mainboard and powerboard and coverter board		
panel		

1.2. Product material information

The following substances, preparations, or components should be disposed of or recovered separately from other WEEE in compliance with Article 4 of EU Council Directive 75/442/EEC.

Capacitors / condensers (containing PCB/PCT)	No used
Mercury containing components	No used
Batteries	No used
Printed circuit boards (with a surface greater than 10 square cm)	Product has printed circuit boards (with a surface greater than 10 square cm)
Component contain toner, ink and liquids	No used
Plastic containing BFR	No used
Component and waste contain asbestos	No used
CRT	No used
Component contain CFC, HCFC, HFC and HC	No used

Gas discharge lamps	No used
LCD display > 100 cm2	Product has an LCD greater than 100 cm2
External electric cable	Product has external cables
Component contain refractory ceramic fibers	No used
Component contain radio-active substances	No used
Electrolyte capacitors (height > 25mm, diameter > 25mm)	Product has electrolyte capacitors (height > 25mm, diameter > 25mm)

1.3. Tools Required

List the type and size of the tools that would typically can be used to disassemble the product to a point where components and materials requiring selective treatment can be removed.

Tool Description:

- Screwdriver (Phillip-head, Hexagonal head)
- Penknife
- Soldering iron and absorber