



Teardown Instruction

LCD Monitor

E2223HN/HNf

Service Manual Versions and Revision

No.	Version	Release Date	Revision
1	1.0	2022/01/26	Initial Release

Chapter 1-TEARDOWN INSTRUCTION

S1

1. Remove Rear Cover Screw and Stand Screws
 - a. Remove screws "1~6" on rear cover with electric screwdriver
 - b. Torque: 12.0 +/- 0.5Kgf/cm, Phillips screwdriver



S4

4. Remove VGA screw
 - a. Remove screws "1~2" with electric screwdriver
 - b. Torque: 12.0 +/- 0.5Kgf/cm, hex screwdriver



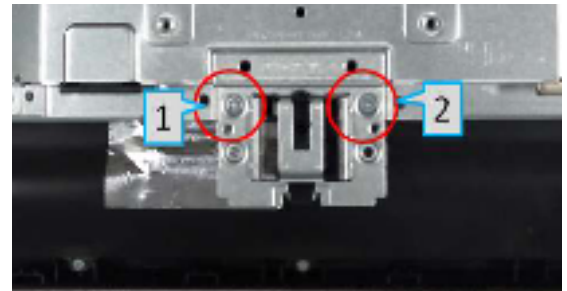
S2

2. Remove Rear Cover
 - a. Pry off the back cover of the machine with the aid of the dismantling fixture, in the sequence of "Bottom->Left/Right->Top"



S5

5. Remove Chassis Screw
 - a. Remove screws "1~2" with electric screwdriver
 - b. Torque: 3.5 +/- 0.5Kgf/cm, Phillips screwdriver



S3

- b. Remove Light Bar and Keypad Cable:
 - a. Remove acetate cloth tape marked with "1", then remove light bar (grasp on Pin then pull outwards to remove)
 - b. Remove Keypad cable "2"



S6

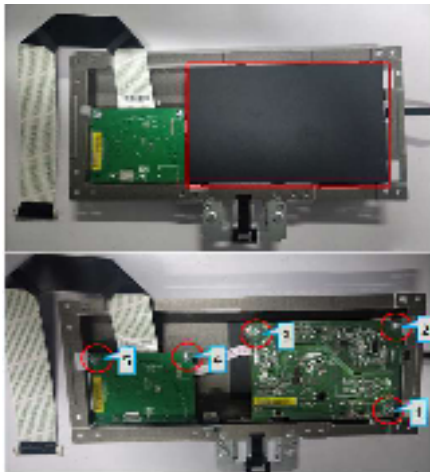
6. Remove Aluminium Foil and LVDS Cable
 - a. Remove aluminium tape then remove LVDS cable (Pinch on clips on the sides)



Teardown Instruction

S7

7. Remove PCBA 1
 - a. Remove mylar (squared in red in the upper picture)
 - b. Remove grounding screw "1" then locking screws marked "2~5" with electric screwdriver
 - c. Torque: 5.5 +/- 0.5Kgf/cm, Phillips screwdriver



S10

10. Remove Keypad
 - a. Remove keypad from front cover (loosen hook circled in red first)



S8

8. Remove PCBA 2
 - a. Remove PI board and IF board
 - b. Separate PI board from IF board



S11

11. Remove Components on PI Board 1
 - a. Remove electrolyte capacitor >25mm height (squared in red) from printed circuit boards
 - b. Cut the glue between bulk cap and PCBA with knife – ensure cutting path within the glue, don't touch bulk cap and PCBA



S9

9. Remove LVDS Cable and Light Bara
 - a. Remove light bar from PI board (grasp on Pin then pull upwards to remove)
 - b. Remove LVDS cable from IF board (lift cover before remove)



S12

12. Remove Components on PI Board 2
 - a. Take out the capacitor pin solder with soldering iron
 - b. Lift the bulk capacitor away from power board





Teardown Instruction

1. Product Material Information

The following substances, preparation, or components should be disposed of or recovered separately from other WEEE in compliance with Article 4 of EU Council Directive 75/422/EEC.

Capacitors / Condensers (containing PCB/PCT)	Not used
Mercury containing components	Not used
Batteries	Not used
Printed circuit boards (with surface greater than 10 square cm)	Product has printed circuit boards (with surface greater than 10 square cm)
Component contain toner, ink and liquids	Not used
Plastic containing BFR	
Component and waste contain asbestos	Not used
CRT	Not used
Component contain CFC, HCFC, HGC and HC	Not used
Gas discharge lamps	Not use
LCD display > 100 cm2	Product LCD greater than 100cm2
External electric cable	Product has external cables
Component contain refractory ceramic fibers	Not used
Component contains radio-active substances	Not used
Electrolyte capacitors (height > 25mm, diameter >25mm)	Product has electrolyte capacitors (height > 25mm)

2. Tools Required

List the type and size of the tools that would typically can be used to disassemble the product to a point where components and materials requiring selective treatment can be removed.

Tool Description:

- Screwdriver (Philip head with $\Phi 5$ mm & $\Phi 3$ mm)
- Screwdriver (Hexagonal to remove VGA connectivity)
- Soldering iron
- Knife