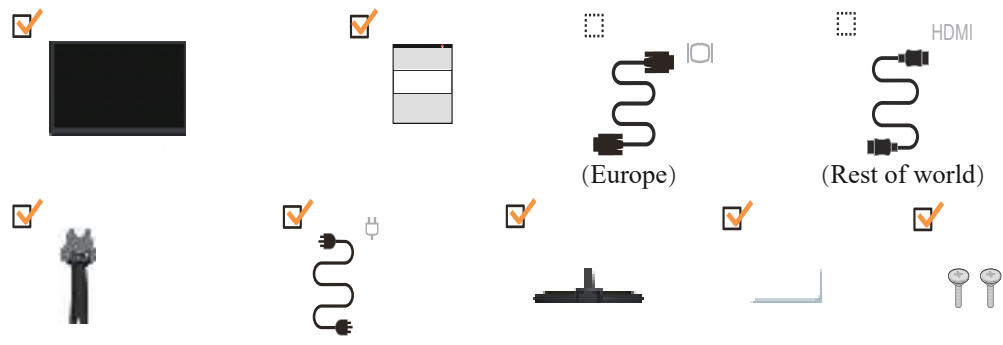
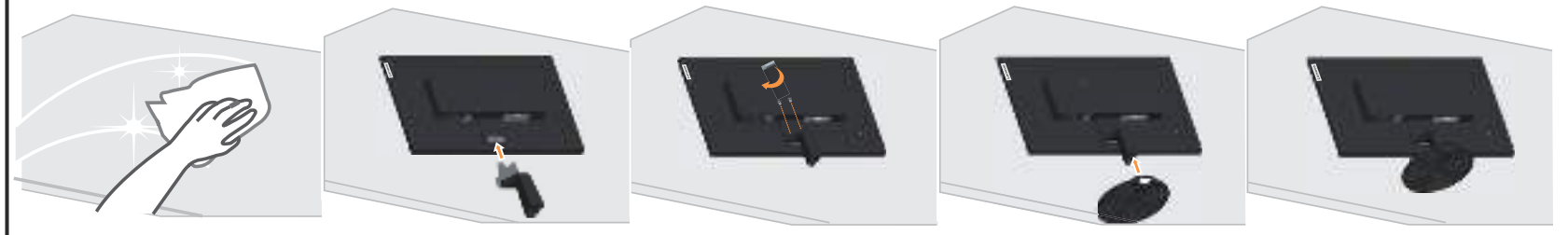




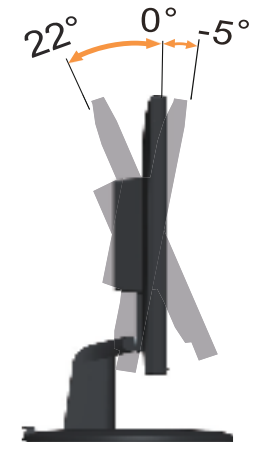
### 1



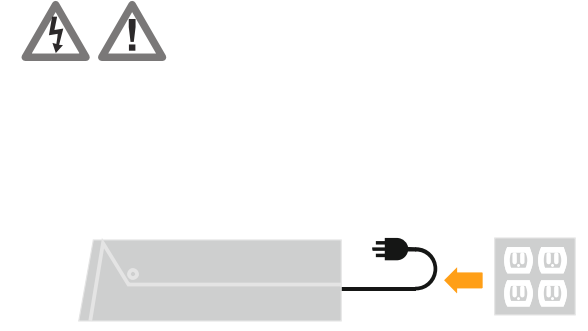
### 2



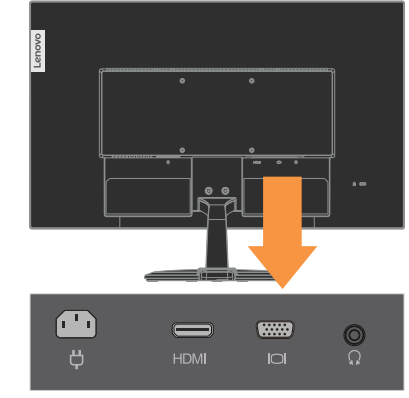
### 3



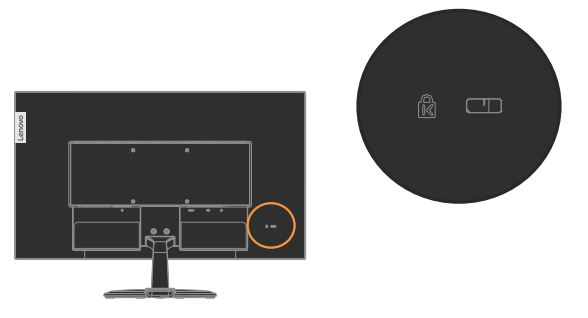
### 4



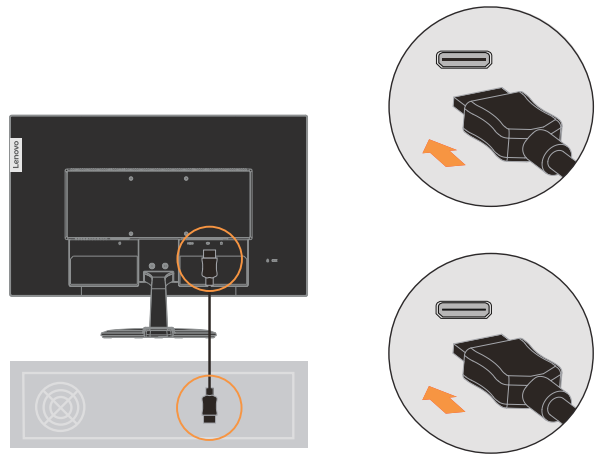
### 5



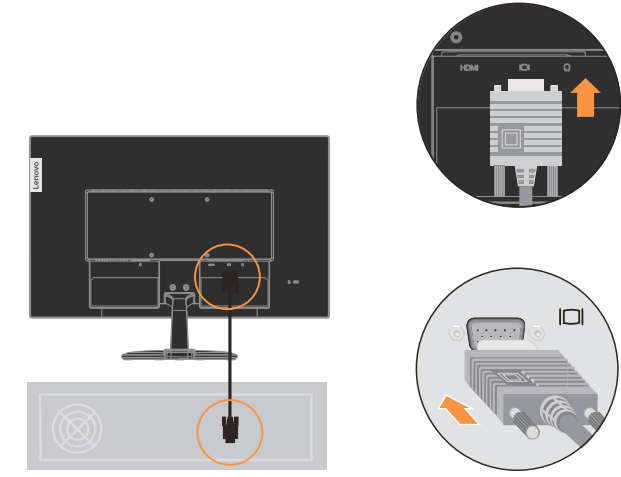
### 6



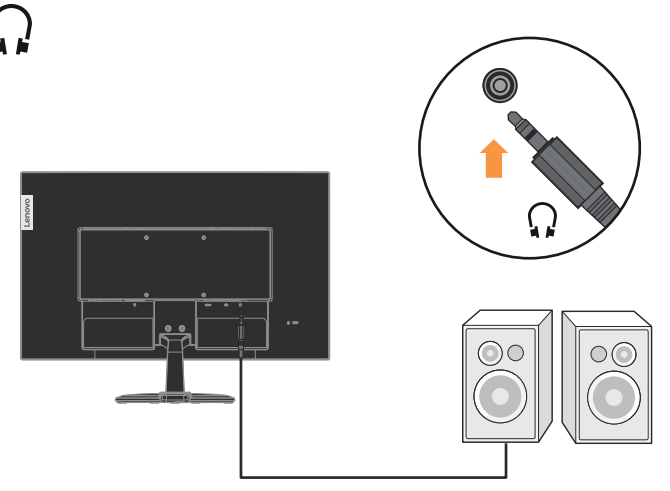
### 7 HDMI



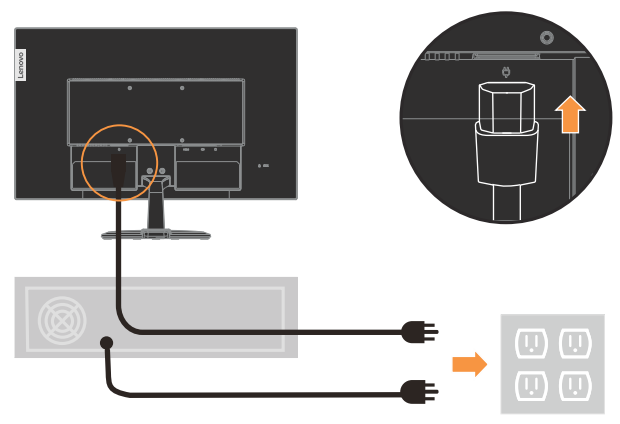
### 8



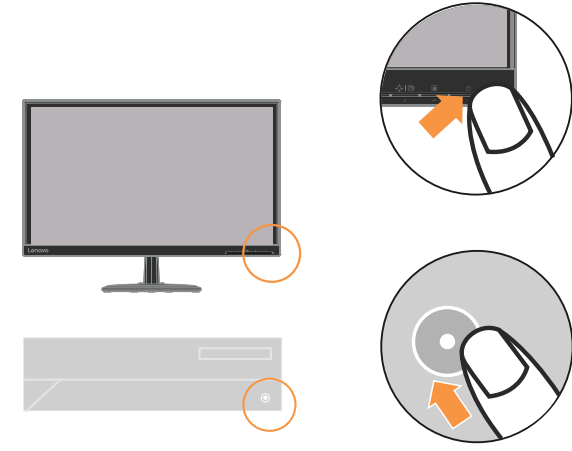
### 9



### 10



### 11



### 12





The drivers, documentations and warranty information for this monitor can be downloaded from http://support.lenovo.com/docs/C22\_25 or scan QR code.

<span><span><span></span></span></span>
يمكن تنزيل برامج التشغيل والوثائق ومعلومات الضمان الخاصة بهذه الشاشة من موقع: http://support.lenovo.com/docs/C22_25 أو مسح كود QR.

As informações dos controladores, das documentações e garantia para este monitor pode ser descarregado de http://support.lenovo.com/docs/C22\_25 ou digitalizar o código QR.

<span><span><span></span></span></span>
Може да изтеглите драйверите, документацията и гаранционната информация за този монитор от http://support.lenovo.com/docs/C22_25 или да сканирате QR кода.

<span><span><span></span></span></span>
គេអាចទាញយក/ដោនឡូដដ្រាយវេ (កម ធីបញ្ញា), ឯកសារបញ្ជាក់នឹងព័ត៌មានអំពីការធានាចេញពីទំព័ររបស់យកាមគំណា http://support.lenovo.com/docs/C22_25ឬស្រុនកម QR បាន។

<span><span><span></span></span></span>
Upravljački programi, dokumentacija i podaci o jamstvu mogu se preuzeti s http://support.lenovo.com/docs/C22_25 ili skenirajte QR kod.

<span><span><span></span></span></span>
Ovladače, dokumentaci a informace o záruce pro tento monitor lze stáhnout z adresy http://support.lenovo.com/docs/C22_25 nebo oskenováním kódu QR.

<span><span><span></span></span></span>
Les pilotes, documentations et informations sur la garantie de ce moniteur peuvent être téléchargés à l'adresse http://support.lenovo.com/docs/C22_25 ou en numérisant le code QR.

<span><span><span></span></span></span>
Treiber, Dokumentationen und Garantieinformationen für diesen Monitor können von http://support.lenovo.com/docs/C22_25 oder durch Scannen des QR-Codes heruntergeladen.

Az ehhez a monitorhoz tartozó illesztőprogramok, dokumentációk és jóvállási információk letölthetők innen: http://support.lenovo.com/docs/C22\_25,vagy olvassa be a QR-kódot.

<span><span><span></span></span></span>
I driver, le documentazioni e le informazioni sulla garanzia di questo monitor sono scaricabili all'indirizzo http://support.lenovo.com/docs/C22_25 o facendo la scansione del codice QR.

<span><span><span></span></span></span>
Драйвери, документацию й інформацію про гарантію для цього монітора можна завантажити зі сторінки http://support.lenovo.com/docs/C22_25 або зісканувавши QR-код.

### Safety information



**DANGER**

**To avoid shock hazard:**

- Do not remove the covers.
- Do not operate this product unless the stand is attached.
- Do not connect or disconnect this product during an electrical storm.
- The power cord plug must be connected to a properly wired and grounded power outlet.
- Any equipment to which this product will be attached must also be connected to properly wired and grounded power outlets.
- To isolate the monitor from the electrical supply, you must remove the plug from the power outlet. The power outlet should be easily!accessible.

**Handling:**

- If your monitor weighs more than 18 kg (39.68 lb), it is recommended that it be moved or lifted by two people.



此款显示器的驱动程序、文档和保修信息的下载地址为 http://support.lenovo.com/docs/C22\_25，也可扫描二维码下载。

<span><span><span></span></span></span>
從 http://support.lenovo.com/docs/C22_25 或掃描 QR 碼可下載本顯示器的驅動程式、文件和保固資訊。

Upravljački programi, dokumentacija i informacije o garanciji za ovaj monitor se mogu preuzeti s lokacije http://support.lenovo.com/docs/C22\_25 ili skenirajte QR kod.

<span><span><span></span></span></span>
Gonilnike, dokumentacijo in informacije o garanciji lahko prenesete s spletnega mesta http://support.lenovo.com/docs/C22_25 ali tako, da optično preberete kodo QR.

<span><span><span></span></span></span>
Ovládače, dokumentáciu a záručné informácie pre tento monitor si môžete stiahnuť z odkazu http://support.lenovo.com/docs/C22_25 alebo prostredníctvom naskenovania QR kódu.

<span><span><span></span></span></span>
Los controladores, la documentación y la información de garantía para este monitor se pueden descargar desde http://support.lenovo.com/docs/C22_25 o escanee el código QR.

<span><span><span></span></span></span>
Bu monitörün sürücüləri, belgeleri ve garanti bilgileri şu adresten indirilebilir: http://support.lenovo.com/docs/C22_25 or scan QR code.

<span><span><span></span></span></span>
Steworniki, dokumentacja i informacje o gwarancji dla tego monitora można, pobrać pod adresem http://support.lenovo.com/docs/C22_25 lub zeskanować kod QR.

<span><span><span></span></span></span>
本モニター用のドライバー、ドキュメント、保証情報は、http://support.lenovo.com/docs/C22_25 からダウンロードするか、QR コードをスキャンしてください。

<span><span><span></span></span></span>
이 모니터의 드라이버, 문서 및 보증 정보는 http://support.lenovo.com/docs/C22_25 을 다운로드하거나 QR 코드를 스캔해도 됩니다.

<span><span><span></span></span></span>
Driverele, documentația și informațiile privind garanția pentru acest monitor se pot descărca de la adresa http://support.lenovo.com/docs/C22_250 sau scanați codul QR.

<span><span><span></span></span></span>
Драйверы, документацию и гарантийную информацию для данного монитора можно загрузить с веб-сайта http://support.lenovo.com/docs/C22_25 или посредством сканирования QR-кода.

<span><span><span></span></span></span>
Diver, dokumentaasi dan infirmasi jaminan untuk monitor ini bisa diunduh dari http://support.lenovo.com/docs/C22_25 atau pindai kode QR.

<span><span><span></span></span></span>
U kunt de stuurprogramma's, documentatie en informatie over garantie voor deze monitor downloaden van http://support.lenovo.com/docs/C22_25 of u kunt de QR-code scannen.



Drivere, dokumenterne og garantioplysningerne til denne skærme kan downloades på http://support.lenovo.com/docs/C22\_25, eller du kan scanne denne QR-kode.

<span><span><span></span></span></span>
Tämä monitorin ohjaimet, asiakirjat ja takuutiedot voi ladata osoitteesta http://support.lenovo.com/docs/C22_25 tai ne voi skannata QR-koodilla.

<span><span><span></span></span></span>
Μπορείτε να κατεβάσετε τους οδηγούς, τα έγγραφα και τις πληροφορίες για την εγγύηση αυτής της οθόνης από την ηλεκτρονική διεύθυνση http://support.lenovo.com/docs/C22_25 ή κάνοντας σάρωση τον κωδικό QR.

<span><span><span></span></span></span>
תאמה גזא לש תוירגאאר יט'רפא מ'כמסמה, מ'ינקתהה ילהנמ תא ד'רהאל ארשפא ה-QR-ה דוק תא קוראל'ו http://support.lenovo.com/docs/C22_25

<span><span><span></span></span></span>
Drivere, dokumentasjon og garantiinformasjon for denne skjermen kan lastes ned fra http://support.lenovo.com/docs/C22_25 eller ved å skanne QR-koden.

<span><span><span></span></span></span>
Os controladores, documentação e informações de garantia deste monitor podem ser transferidas a partir de http://support.lenovo.com/docs/C22_25 ou efetuando a leitura do código QR.

<span><span><span></span></span></span>
Drivrutinerna, dokumentationen och garantiinformationen för denna bildskärm kan laddas ner på http://support.lenovo.com/docs/C22_25 eller skanna QR-kod.

<span><span><span></span></span></span>
สามารถดาวน์โหลดไดรเวอร์ เอกสารคู่มือ และข้อมูลการรับประกันสำหรับจอภาพนี้ได้ที่ http://support.lenovo.com/docs/C22_25 หรือสแกนคิวอาร์โค้ด

### 有害物质

为满足中国电子电气产品有害物质限制相关的法律法规和其他要求，联想公司对本产品中有害物质，按部件分类，声明如下。

部件名称	有害物质					
	铅 (Pb)	汞 (Hg)	镉 (Cd)	六价铬 (Cr (VI))	多溴联苯 (PBB)	多溴二苯醚 (PBDE)
外壳	○	○	○	○	○	○
液晶显示屏/灯管	×	○	○	○	○	○
电路板组件*	×	○	○	○	○	○
电源线/连接线	×	○	○	○	○	○
金属件	×	○	○	○	○	○
附件	×	○	○	○	○	○

本表格依据 SJ/T 11364 的规定编制。

- \*：电路板组件包括印刷电路板及其构成的零部件，如电阻、电容、集成电路、连接器等。
- ：表示该有害物质在该部件所有均质材料中的含量均在GB/T 26572规定的限量要求以下。
- ×
- ×：表示该有害物质至少在该部件的某一均质材料中的含量超出GB/T 26572规定的限量要求。
- 注：表中标记“×”的部件，皆因全球技术发展水平限制而无法实现有害物质的替代。

<span><span><span></span></span></span>
<b>警語:</b> 使用過度恐傷害視力。 <p>注意事項:</p> (1) 使用30分鐘請休息10分鐘。 (2) 未滿2歲幼兒不看螢幕，2歲以上每天看螢幕不要超過1小時。

產品操作手冊請參照網址: http://support.lenovo.com/docs/C22\_25 台灣RoHS表格也請參照此網址輸入型號可找到。



This device complies with Part 15 of the FCC Rules. Operation is subject to the following two conditions:
(1) this device may not cause harmful interference, and
(2) this device must accept any interference received, including interference that may cause undesired operation.