

ThinkVision

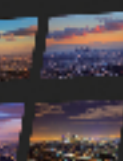
## Creator Extreme Monitor With Mini-LED Backlight

Lenovo

Creating compelling content is an art form that requires high-quality visuals for impactful storytelling. Anyone from designers, editors, or VFX specialists needs a monitor that reproduces high contrast and accurate colors because a subtle difference or inaccuracy can change the entire mood or context of a scene. The ThinkVision Creator Extreme is the perfect monitor for content creators, as the industry-leading Mini-LED display with Dolby Vision<sup>®</sup> approved and VESA certified HDR 1000 imaging technology that combines high-dynamic range (HDR) with wide color gamut capabilities (99.5% DCI-P3), Mini-LED backlights, wide color gamut, and factory-calibrated color accuracy. With its 1152 mini-LED zones and 10,368 LEDs for dynamic local dimming, the monitor produces accurate visuals that allow you to design every frame with extreme precision. For enhanced connectivity, the ThinkVision Creator Extreme features versatile ports including DP 1.4, HDMI 2.0, and USB Type-C<sup>1</sup>, making it a perfect tool for videographers and colorists. Lenovo exclusive ThinkColour software<sup>2</sup> lets you effortlessly adjust advanced display settings using the mouse, enhancing efficiency and user experience.



**Perfect Color for Digital Content Creators**



**Lifelike HDR Display with Mini-LED Backlight Technology**

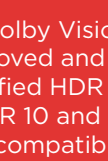


**Purposeful Design to Enhance Efficiency**



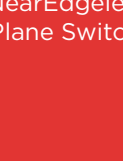
### Picture-perfect Imagery

The Creator Extreme is perfect in more ways than one if you are a creative professional involved with content creation. The monitor supports multiple High Dynamic Range (HDR) formats, including Dolby Vision<sup>®</sup>, VESA certified HDR 1000, HDR10 and HLG, which helps to reproduce a greater range of luminosity than what is possible with standard digital imaging so that content creators can unveil real-world scenes containing very bright, direct sunlight to extreme shade, or very faint nebulae. Its 27-inch, UHD (3840 x 2160), 3-side NearEdgeless, In-Plane Switching screen finds its place in color grading, animation, and graphic design for its incredibly lifelike visuals. Mini-LED backlights give precise control over on-screen dimming zones and minimize visible blooming, ensuring you notice every fine detail and output your best work, always.



**Industry-leading HDR Imaging technology**

Dolby Vision<sup>®</sup> approved and VESA certified HDR 1000; HDR10 and HLG compatible



**Display Technology**

27-inch, UHD (3840 x 2160), 3-side NearEdgeless In-Plane Switching



**Mini-LED backlight**

1152 dimming zones, 10,368 LEDs



*Purposeful design meets functionality. Exclusive shading hood and headphone hook.*

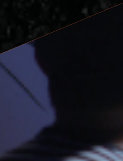
### Perfect Color for Digital Content Creators

Color consistency is vital to professionals in the creative content industry. Compositors, colorists, and 3D animators will appreciate the Creator Extreme for its dedication to color fidelity with 10-bit color depth, 4K built-in 99.5% DCI-P3, 100% sRGB, and 100% BT.709 to aid in the creation and editing of video across multiple applications. It also comes factory-calibrated for color accuracy (average  $\Delta E < 1$ ) out of the box, so you can simply plug-in and get to work right away.



**Color Gamut**

99.5% DCI-P3, 100% sRGB, 100% BT.709



**Color Accuracy**

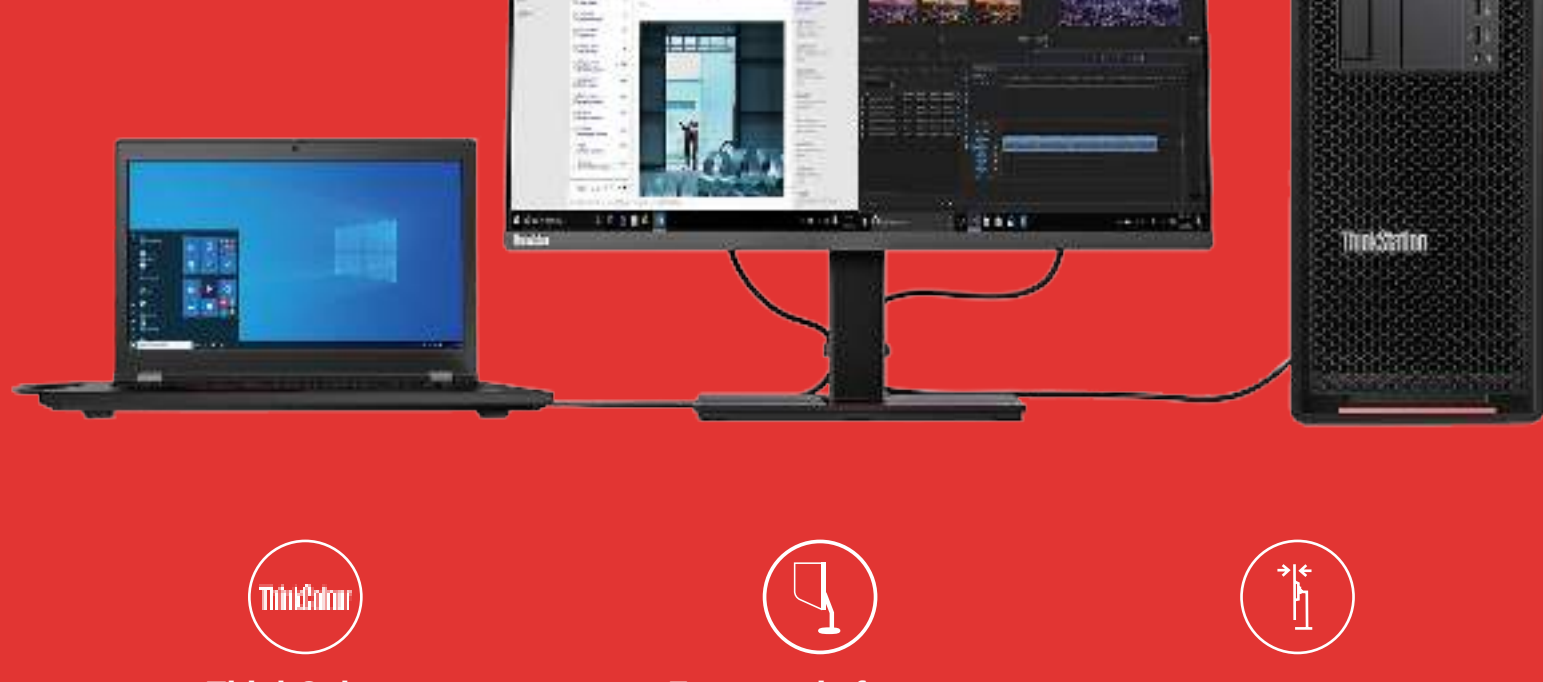
Average  $\Delta E < 1$



### Purposeful design for enhanced productivity and ease of use

Intelligent mechanical design has made the Creator Extreme one of the slimmest 27-inch, 4K, mini-LED, HDR monitors out there, with user-centric features including a shading hood, headphone hook, and USB Link functionality that makes for easier data transmission and control for two PC devices by just moving and clicking the mouse. What's more, powerful tools for multi-PC collaboration also include PiP/PbP and KVM Switch to bring productivity and flexibility to the next level. The Smart Power function effectively detects the consumption requirements of your connected peripherals and dynamically manages up to 100W<sup>1</sup> of power, delivered through the one cable solution USB Type-C Gen2. Smarter connectivity is managed by the latest high-speed DP 1.4, HDMI 2.0, and USB 3.1 Type-C Gen2 ports.

Lenovo ThinkColour<sup>2</sup> is a one-stop display software to further enhance and elevate your user experience with the ThinkVision Creator Extreme monitor, providing premium and exclusive features and functions that empower users with intuitive tools to maximize productivity in the workplace.



**ThinkColour**

One-stop software for intuitive using experience



**Ergonomic features**

Headphone hook and Shading hood



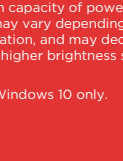
**Slim Design**

One of the slimmest 27-inch, Mini-LED, HDR Monitor



**Tools for collaboration**

PiP, PbP and KVM Switch



**Versatile Connectivity**

3 x HDMI 2.0, 1 x DP 1.4, 1 x DP cable (1.8m), 1 x HDMI cable (1.8m), 1 x USB Type-C to Type-C cable (1.5m), 1 x USB Type-A to Type-B cable (1.8m), Shading Hood, Factory Calibration Report, Quick Setup Guide

<sup>1</sup> Listed as maximum capacity of power delivery. Actual capacity of power delivery may vary depending upon devices connected or monitor configuration, and may decline with downstream USB ports connected or higher brightness setting.

<sup>2</sup> Compatible with Windows 10 only.

### ThinkVision Creator Extreme

## Specifications

#### DISPLAY

<b>Panel Size</b>	27-inch
<b>Screen Dimensions</b>	608.80 mm x 354.10 mm
<b>Panel Type</b>	3-side NearEdgeless In-Plane Switching
<b>Active Area</b>	596.74 mm x 335.66 mm
<b>Backlight</b>	Mini-LED (with 1152 zones local dimming)
<b>Aspect Ratio</b>	16:9
<b>Resolution</b>	3840 x 2160
<b>Pixel Pitch</b>	0.1554 mm x 0.1554 mm
<b>Dot/Pixel Per Inch(DPI/PPI)</b>	163
<b>Viewing Angle (H x V @ CR 10:1)</b>	178° / 178°
<b>Response Time</b>	4ms (Extreme Mode) 6ms (Normal Mode)
<b>Refresh Rate</b>	60 Hz
<b>Brightness (typical)</b>	620 cd/m <sup>2</sup>
<b>Brightness (peak)</b>	1200 cd/m <sup>2</sup>
<b>Contrast Ratio (typical)</b>	1100:1
<b>Dynamic Contrast Ratio (typical)</b>	3M:1
<b>Color Gamut</b>	99.5% DCI-P3, 100% sRGB, 100% BT.709, 73% BT.2020
<b>Color Depth</b>	10-bit (8+FRC)
<b>Processor LUT</b>	14-bit
<b>Color Support (typical)</b>	1.07 Billion
<b>HDR Compliance</b>	Dolby Vision <sup>®</sup> Approved DisplayHDR™ 1000 HDR10 HLG
<b>Local Dimming</b>	152 zones
<b>Anti-glare</b>	Yes

**Audio Signal**  
1 x Audio Out (3.5 mm)

**USB Hub**  
Yes

**USB Upstream**  
2 x USB3.2 Gen1 (1 by USB Type-C, 1 by USB Type-B)

**USB Downstream**  
4 x USB3.2 Gen1 (1x BC1.2)

#### MULTI-MEDIA

**Optional Soundbar Support**  
Yes (PN 0A36190)

#### SPECIAL FEATURES

**Factory Calibration**  
Yes (avg.  $\Delta E < 1$ )

**PIP/PBP**  
Yes

**KVM Switch**  
Yes

**Software**  
Lenovo ThinkColour<sup>2</sup> (Lenovo Display Control Center)

#### POWER

**Power Consumption (Typ./Max)**  
70W / 270W

**Power Consumption Sleep/Off Mode**  
< 0.5W

**Power Consumption Switch-Off Mode**  
< 0.3W

**Power Supply**  
Internal

**USB Type-C Power Delivery(W)**  
Up to 100W<sup>1</sup>

**Smart Power**  
Yes

**Voltage Required**  
AC 100 to 240 V (47-63 Hz)

#### MECHANICAL

**Tilt Angle (front/back)**  
-5° / 35°

**Swivel Angle (left/right)**  
+45° / -45°

**Lift (max range)**  
135 mm

**Pivot**  
-90° / 90°

**VESA Mount Capability**  
Yes (100 x 100 mm)

**ThinkCentre M Series Tiny support**  
Yes, by Tiny/Nano monitor clamp II (PN: 4XH0Z42451) & Tiny VESA mount II (PN: 4XFON03161)

**ThinkCentre M Series Nano support**  
Yes, by Tiny/Nano monitor clamp II (PN: 4XH0Z42451) & Tiny VESA mount II (PN: 4XFON03161)

**Kensington Lock Slot**  
Yes

#### Headphone Hook

Yes

#### Cable Management

Yes

**Bezel Color**  
Raven Black

**Bezel Width(side)**  
2.0 mm

**Bezel Width(top/bottom)**  
2.0 / 16.0 mm

#### WHAT' IN THE BOX

Monitor with stand  
1 x Power cable (1.8m)  
1 x DP cable (1.8m)  
1 x HDMI cable (1.8m)  
1 x USB Type-C to Type-C cable (1.5m)  
1 x USB Type-A to Type-B cable (1.8m)  
Shading Hood  
Factory Calibration Report  
Quick Setup Guide

#### DIMENSION

**Size Packed (D x H x W, mm/ inch)**  
758 x 493 x 200 mm  
29.84 x 19.41 x 7.87 inches

**Size Unpacked w/stand (D x H x W)(mm/inch) (Lowest position)**  
234.1 x 458.8 x 613.1 mm  
9.22 x 18.06 x 24.14 inches

**Size Unpacked w/stand (D x H x W)(mm/inch) (Highest position)**  
234.1 x 593.8 x 613.1 mm  
9.22 x 23.38 x 24.14 inches

**Size Unpacked w/o stand (Head Only) (D x H x W)(mm/inch)**  
53.7 x 359.7 x 613.1 mm  
2.11 x 14.16 x 24.14 inches

**Weight Packed (kg/lb)**  
13.5kg / 29.76 lbs.

**Weight Unpacked (kg/lb)**  
10.8kg / 23.81 lbs.

**Weight (Monitor Head Only) (kg/ lb)**  
6.55kg / 14.44 lbs.

#### CERTIFICATION

**CCC**  
Yes

**RoHS (EU 2002/95/EC)**  
Yes

**Windows Certification**  
Windows 7, Windows 10

**China Energy Efficiency Standard**  
Tier 1 (professional monitor)

**TÜV Rheinland Low Blue Light**  
Yes

