



Philips
LED monitor with Digital
TV tuner

T-line
23" (58.4 cm)

231T1LSB



Experience great TV viewing on your LED monitor

Experience brilliant multimedia performance with this stylish, glossy and stunning Full HD 1080p display with Digital TV tuner! Combined with HDMI and AV inputs along with powerful sound the 231T1 takes entertainment to a new height!

Best picture quality

- LED technology ensures natural colors
- Full HD LCD display, with a 1920x1080p resolution
- SmartContrast 20000000:1 for incredible rich black details
- Smart mode selects a perfect mode for what you are watching
- Up to 5ms response time for clear, fast moving action

Great convenience

- Built-in TV tuner for viewing TV programs on your PC monitor
- Remote control for TV functions

Experience true multimedia

- SmartSound selects a perfect mode for audio performance
- HDMI-ready for top quality, multimedia experience
- Incredible Surround for enhanced audio enjoyment

Ready for digital

- MPEG4 HDTV reception via DVBT tuner

PHILIPS

Highlights

LED technology

White LED's are solid state devices which light up to full, consistent brightness faster saving startup time. LED's are free from mercury content which allows for eco-friendly recycling and disposal process. LED's allow for better dimming control of LCD backlight, resulting in super high contrast ratio. It also gives superior color reproduction thanks to consistent brightness across the screen.

MPEG4 HDTV

HDTV allows you to watch High Definition TV in the best picture and sound quality without additional set-top box. With the built in DVBT tuner that can handle state-of-the-art MPEG-4 formats, you can now receive and watch High Definition TV programs and other rich multimedia contents in Digital Quality

Full HD LCD display 1920x1080p



The Full HD screen has the widescreen resolution of 1920 x 1080p. This is the highest resolution of HD sources for the best possible picture quality. It is fully future proof as it supports 1080p signals from all sources, including the most recent like Blu-ray and advanced HD game consoles. The signal processing is extensively upgraded to support this much higher signal quality and resolution. It produces brilliant flicker-free progressive scan pictures with superb brightness and colors.

HDMI Ready

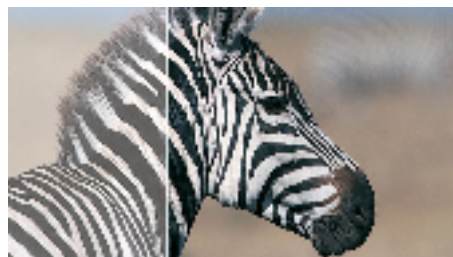


An HDMI-ready device has all the required hardware to accept High-Definition Multimedia Interface (HDMI) input. A HDMI cable enables high-quality digital video and audio all transmitted over a single cable from a PC or any number of AV sources (including set-top boxes, DVD players, A/V receivers and video cameras).

Smart mode

The optimum picture and sound depends on various aspects like the video source, content type, surroundings of the room, type of display device etc. Smart Mode has predefined picture and sound settings conveniently preset by the way you use your TV. The 'Personal' setting, allows you to define the picture settings according to your preference, store it and gain easy access for future selection. All these conveniently built into your TV for optimal settings.

SmartContrast ratio 20000000:1



You want the LCD flat display with the highest contrast and most vibrant images. Philips advanced video processing combined with

unique extreme dimming and backlight boosting technology results in vibrant images. SmartContrast will increase the contrast with excellent blacklevel and accurate rendition of dark shades and colors. It gives a bright, lifelike picture with high contrast and vibrant colors.

Incredible Surround



Incredible Surround is an audio technology from Philips that dramatically magnifies the sound field to immerse you in the audio. Using state-of-the-art electronic phase shifting, Incredible Surround mixes sounds from left and right in such a way that it expands the virtual distance between the two speakers. This wider spread greatly enhances the stereo effect and creates a more natural sound dimension. Incredible Surround allows you to experience total surround with greater depth and width of sound, without the use of additional speakers.

5ms response time

Response time measures signal reaction speed in milliseconds. Faster response time is better as it eliminates visible image artifacts that could dampen your experience when viewing fast moving images or objects. In this case, this LCD panel gives you 5ms response time so that you can watch your LCD TV with a clear, fast moving action.

Specifications

Picture/Display

- Aspect ratio: Widescreen, 16:9
- Brightness: 250 cd/m²
- SmartContrast: 20,000,000:1
- Contrast ratio (typical): 1000:1
- Diagonal screen size: 23 inch / 58.42 cm
- Panel resolution: 1920 x 1080
- Picture enhancement: Progressive scan, TrueVision
- Response time (typical): 5 ms
- Screen enhancement: Anti-Reflection coated screen
- Viewing angle: 170° (H) / 160° (V)

Supported Display Resolution

Computer formats

Resolution	Refresh rate
1920 x 1080	60Hz

Video formats

Resolution	Refresh rate
480i	60Hz
480p	60Hz
576i	50Hz
576p	50Hz
720p	50, 60Hz
1080i	50, 60Hz
1080p	50, 60Hz

Sound

- Output power (RMS): 2 x 5W
- Sound Enhancement: Incredible Surround, Smart Sound
- Sound System: Mono, Stereo

Convenience

- Ease of Installation: Automatic Tuning System (ATS), Plug & Play
- Ease of Use: Program List, Side Control
- Remote control: 231T1 Remote control
- On-Screen Display languages: Bulgarian, Croatian, Czech, Danish, Dutch, English, Finnish, French, German, Greek, Hungarian, Italian, Norwegian, Polish, Portuguese, Russian, Serbian, Simplified Chinese, Slovakian, Slovenian, Spanish, Swedish, Turkish
- Other convenience: VESA mount (100x100mm)

- Screen Format Adjustments: Widescreen, Normal, Zoom 1, Zoom 2, Auto Format, Subtitle Zoom, Super Zoom
- Smart mode: Movie, Personal, Vivid, Standard, Eco
- SmartSound: Music, Speech, Personal
- Teletext: 1000 page Smart Text

Tuner/Reception/Transmission

- Aerial Input: 75 ohm coaxial (IEC75)
- TV system: PAL I, PAL B/G, PAL D/K, SECAM B/G, SECAM D/K, SECAM L/L'
- Video Playback: NTSC, SECAM, PAL
- Tuner Display: PLL
- Digital TV: DVB Terrestrial *
- Tuner bands: Hyperband, S-Channel, UHF, VHF

Connectivity

- Signal Input: VGA (Analog), HDMI, PC Audio in
- Ext 1: SCART in
- Ext 2: YPbPr in, Audio L/R in
- Ext 3: CVBS out, Audio L/R out
- Other connections: Common Interface, CVBS in, Audio L/R in, USB Service port, S/PDIF out (coaxial)

Power

- On mode: 33.40 W (Typ.@monitor mode)
- Off mode: 0.18 W
- Ambient temperature: 0 °C to 40 °C
- Mains power: 100-240V, 50/60Hz

Dimensions

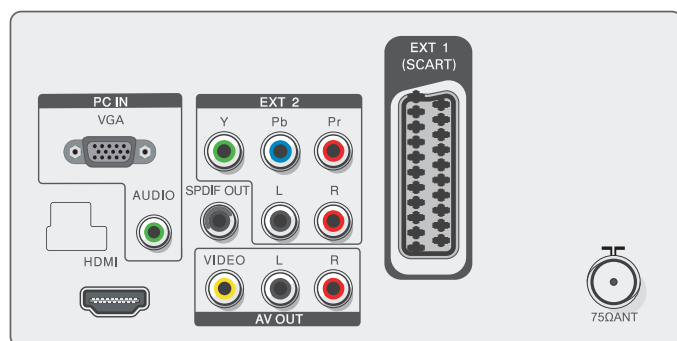
- Product with stand (mm): 399 x 560 x 176 mm
- Product without stand (mm): 364 x 560 x 65 mm
- Packaging in mm (WxHxD): 477 x 653 x 160 mm

Weight

- Product with stand (kg): 5.53 kg
- Product without stand (kg): 5.35 kg
- Product with packaging (kg): 7.59 kg

Accessories

- Included accessories: Table top stand, Power cord, Quick start guide, User Manual, Remote Control, Batteries for remote control



Issue date 2017-07-07

Version: 2.0.1

12 NC: 8670 000 74791
EAN: 87 12581 59593 7

© 2017 Koninklijke Philips N.V.
All Rights reserved.

Specifications are subject to change without notice.
Trademarks are the property of Koninklijke Philips N.V.
or their respective owners.

www.philips.com