

SAMSUNG

USER MANUAL

Gaming Monitor

C27G7*T* C32G7*T* C49G9*T*

The colour and the appearance may differ depending on the product, and the specifications are subject to change without prior notice to improve the performance.

The contents of this manual are subject to change without notice to improve quality.

© Samsung

Samsung owns the copyright for this manual.

Use or reproduction of this manual in parts or entirety without the authorization of Samsung is prohibited.

Trademarks other than that of Samsung are owned by their respective owners.

An administration fee may be charged in the following situations:

- (a) An engineer is called out at your request, but it is found that the product has no defect (i.e., where the user manual has not been read).
- (b) You bring the unit to a repair centre, but it is found that the product has no defect (i.e., where the user manual has not been read).

You will be informed of the administration fee amount before a technician visits.

Table of contents

Before Using the Product

Safety Precautions	4
Electricity and Safety	4
Installation	5
Operation	6
Cleaning	8
Correct posture to use the product	8

Preparations

Installation	9
Checking the space around the product	9
Adjusting the Product Tilt and Height	10
Rotating the Product	11
Anti-theft Lock	11
Attaching the BRACKET WALL	12
Control Panel	13

Connecting and Using a Source Device

Read below before connecting the product.	14
Ports	15
Connecting and Using a PC	16
Connection Using the HDMI Cable	16
Connection Using an HDMI-DVI Cable	16
Connection Using an DP Cable	16
Connecting to headphones or earphones	16
Connecting the Power	17
Connecting the Product to a PC as a USB HUB	18
Setting Optimum Resolution	19

Game

Refresh Rate	20
Refresh Rate activation conditions and operating specifications	20
Black Equalizer	21
Response Time	21
Adaptive-Sync (for NVIDIA graphics card)	22
FreeSync (for AMD graphics card)	23
Low Input Lag	24
Virtual Aim Point	24
Screen Size	26

Picture

Picture Mode	27
Brightness	28
Contrast	28
Sharpness	28
Color	28
Black Level	29
Eye Saver Mode	29
Screen Adjustment	29
Calibration Report	29

Configuring the PIP/PBP Settings

PIP/PBP Mode	30
Mode Type	30
Screen Size	30
Screen Position	30
Source	31
Sound Source	31
Screen Ratio	31
Contrast	31

Table of contents

OnScreen Display

Language	32
Display Time	32

System

Infinity Core Lighting	33
Local Dimming	33
🔊 Volume	33
Dynamic Brightness	33
Off Timer Plus	34
PC/AV Mode	34
USB Super Charging	34
DisplayPort Ver.	35
Input Port Ver.	35
Auto Source Switch	35
Key Repeat Time	35
Power LED On	35

Support

Self Diagnosis	36
Software Update	36
Information	37
Reset All	37

Installing the Software

Easy Setting Box	38
Restrictions and Problems with the Installation	38
System Requirements	38
Driver Installation	38

Troubleshooting Guide

Requirements Before Contacting Samsung Customer Service Centre	39
Product diagnosis (Screen issue)	39
Checking the Resolution and Frequency	39
Check the following.	39
Q & A	41

Specifications

General	42
Standard Signal Mode Table	43

Appendix

Responsibility for the Pay Service (Cost to Customers)	46
Not a product defect	46
A Product damage caused by customer's fault	46
Others	46

Chapter 01

Before Using the Product







Safety Precautions

Warning

A serious or fatal injury may result if instructions are not followed.

Caution

Personal injury or damage to properties may result if instructions are not followed.

CAUTION			
RISK OF ELECTRIC SHOCK. DO NOT OPEN.			
CAUTION: TO REDUCE THE RISK OF ELECTRIC SHOCK, DO NOT REMOVE COVER (OR BACK). THERE ARE NO USER SERVICEABLE PARTS INSIDE. REFER ALL SERVICING TO QUALIFIED PERSONNEL.			
	This symbol indicates that high voltage is present inside. It is dangerous to make any kind of contact with any internal part of this product.		AC voltage: Rated voltage marked with this symbol is AC voltage.
	This symbol indicates that this product has included important literature concerning operation and maintenance.		DC voltage: Rated voltage marked with this symbol is DC voltage.
	Class II product: This symbol indicates that a safety connection to electrical earth (ground) is not required. If this symbol is not present on a product with a mains lead, the product MUST have a reliable connection to protective earth (ground).		Caution. Consult instructions for use: This symbol instructs the user to consult the user manual for further safety related information.

Electricity and Safety

Warning

- Do not use a damaged power cord or plug, or a loose power socket.
- Do not use multiple products with a single power socket.
- Do not touch the power plug with wet hands.
- Insert the power plug all the way in so it is not loose.
- Connect the power plug to a grounded power socket (type 1 insulated devices only).
- Do not bend or pull the power cord with force. Be careful not to leave the power cord under a heavy object.
- Do not place the power cord or product near heat sources.
- Clean any dust around the pins of the power plug or the power socket with a dry cloth.

Caution

- Do not disconnect the power cord while the product is being used.
- Only use the power cord provided with your product by Samsung. Do not use the power cord with other products.
- Keep the power socket where the power cord is connected unobstructed.
 - The power cord must be disconnected to cut off power to the product when an issue occurs.
- Hold the plug when disconnecting the power cord from the power socket.

Installation

Warning

- DO NOT PLACE CANDLES, INSECT REPELLANTS OR CIGARETTES ON TOP OF THE PRODUCT. DO NOT INSTALL THE PRODUCT NEAR HEAT SOURCES.
- Do not install the product in poorly ventilated spaces such as a bookcase or closet.
- Install the product at least 10cm away from the wall to allow ventilation.
- Keep the plastic packaging out of the reach of children.
 - Children may suffocate.
- Do not install the product on an unstable or vibrating surface (insecure shelf, sloped surface, etc.)
 - The product may fall and become damaged and/or cause an injury.
 - Using the product in an area with excess vibration may damage the product or cause a fire.
- Do not install the product in a vehicle or a place exposed to dust, moisture (water drips, etc.), oil, or smoke.
- Do not expose the product to direct sunlight, heat, or a hot object such as a stove.
 - The product lifespan may be reduced or a fire may result.
- Do not install the product within the reach of young children.
 - The product may fall and injure children.
- Edible oil, such as soybean oil, can damage or deform the product. Do not install the product in a kitchen or near a kitchen counter.

Caution

- Do not drop the product while moving.
- Do not set down the product on its front.
- When installing the product on a cabinet or shelf, make sure that the bottom edge of the front of the product is not protruding.
 - The product may fall and become damaged and/or cause an injury.
 - Install the product only on cabinets or shelves of the right size.
- Set down the product gently.
 - Product failure or personal injury may result.
- Installing the product in an unusual place (a place exposed to a lot of fine dust, chemical substances, extreme temperatures or a significant presence of moisture, or a place where the product will operate continuously for an extended period of time) may seriously affect its performance.
 - Be sure to consult Samsung Customer Service Centre if you want to install the product at such a place.
- Before assembling the product, place the product down on a flat and stable surface so that the screen is facing downwards.
 - The product is curved. Placing pressure on the product when on a flat surface may damage the product. When the product is on the ground facing up or down, do not put pressure on it.

Operation

Warning

- There is a high voltage inside the product. Never disassemble, repair or modify the product yourself.
 - Contact Samsung Customer Service Centre for repairs.
- To move the product, first disconnect all the cables from it, including the power cable.
- If the product generates abnormal sounds, a burning smell or smoke, disconnect the power cord immediately and contact Samsung Customer Service Centre.
- Do not let children hang from the product or climb on top of it.
 - Children may become injured or seriously harmed.
- If the product is dropped or the outer case is damaged, turn off the power and disconnect the power cord. Then contact Samsung Customer Service Centre.
 - Continued use can result in a fire or electric shock.
- Do not leave heavy objects or items that children like (toys, sweets, etc.) on top of the product.
 - The product or heavy objects may fall as children try to reach for the toys or sweets resulting in a serious injury.
- During a lightning or thunderstorm, power off the product and remove the power cable.
- Do not drop objects on the product or apply impact.
- Do not move the product by pulling the power cord or any cable.
- If a gas leakage is found, do not touch the product or power plug. Also, ventilate the area immediately.
- Do not lift or move the product by pulling the power cord or any cable.
- Do not use or keep combustible spray or an inflammable substance near the product.
- Ensure the vents are not blocked by tablecloths or curtains.
 - An increased internal temperature may cause a fire.
- Do not insert metallic objects (chopsticks, coins, hairpins, etc) or objects that burn easily (paper, matches, etc) into the product (via the vent or input/output ports, etc).
 - Be sure to power off the product and disconnect the power cord when water or other foreign substances have entered the product. Then contact Samsung Customer Service Centre.
- Do not place objects containing liquid (vases, pots, bottles, etc) or metallic objects on top of the product.
 - Be sure to power off the product and disconnect the power cord when water or other foreign substances have entered the product. Then contact Samsung Customer Service Centre.

Caution

- Leaving the screen fixed on a stationary image for an extended period of time may cause afterimage burn-in or defective pixels.
 - Set the screen to power-saving mode or moving-picture screen saver when not using the product for an extended period of time.
- Disconnect the power cord from the power socket if you do not plan on using the product for an extended period of time (vacation, etc).
 - Dust accumulation combined with heat can cause a fire, electric shock or electric leakage.
- Use the product at the recommended resolution and frequency.
 - Your eyesight may deteriorate.
- Do not put AC/DC adapters together.
- Remove the plastic bag from the AC/DC adapter before you use it.
- Do not let water enter the AC/DC adapter device or get the device wet.
 - An electric shock or fire may result.
 - Avoid using the product outdoors where it can be exposed to rain or snow.
 - Be careful not to get the AC/DC adapter wet when you wash the floor.
- Do not put the AC/DC adapter near to any heating apparatus.
 - Otherwise, a fire may result.
- Keep the AC/DC adapter in a well-ventilated area.
- If you place the AC/DC power adapter hanging with the cord input facing upwards, water or other foreign substances could enter the Adapter and cause the Adapter to malfunction.
Make sure to rest the AC/DC power adapter flat on a table or the floor.
- Do not hold the product upside-down or move it by holding the stand.
 - The product may fall and become damaged or cause an injury.
- Looking at the screen too close for an extended period of time can deteriorate your eyesight.
- Do not use humidifiers or stoves around the product.
- Rest your eyes for more than 5 minutes or look at distance objects for every 1 hour of product use.
- Do not touch the screen when the product has been turned on for an extended period of time as it will become hot.
- Store small accessories out of the reach of children.
- Exercise caution when adjusting the product angle.
 - Your hand or finger may get stuck and injured.
 - Tilting the product at an excessive angle may cause the product to fall and an injury may result.
- Do not place heavy objects on the product.
 - Product failure or personal injury may result.
- When using headphones or earphones, do not turn the volume too high.
 - Having the sound too loud may damage your hearing.

Cleaning

High-glossy models can develop white stains on the surface if an ultrasonic wave humidifier is used nearby.

- Contact your nearest Samsung Customer Service Centre if you want to clean the inside of the product (Service fee will be charged.)

Do not press the product screen with hands or other objects. There is a risk of damaging the screen.

- Exercise care when cleaning as the panel and exterior of advanced LCDs are easily scratched.

Take the following steps when cleaning.

- 1 Power off the product and PC.
- 2 Disconnect the power cord from the product.
 - Hold the power cable by the plug and do not touch the cable with wet hands. Otherwise, an electric shock may result.
- 3 Wipe the product with a clean, soft and dry cloth.

Wet a soft cloth in water, wring it out well, and then use the cloth to wipe the exterior of the product clean.

 - Do not apply a cleaning agent that contains alcohol, solvent, or surfactant to the product.
 - Do not spray water or detergent directly on the product.
- 4 Connect the power cord to the product when cleaning is finished.
- 5 Power on the product and PC.

Correct posture to use the product



Use the product in the correct posture as follows:

- Straighten your back.
- Allow a distance of 45 to 50cm between your eye and the screen, and look slightly downward at the screen.
- Keep your eyes directly in front of the screen.
- Adjust the angle so light does not reflect on the screen.
- Keep your forearms perpendicular to your upper arms and level with the back of your hands.
- Keep your elbows at about a right angle.
- Adjust the height of the product so you can keep your knees bent at 90 degrees or more, your heels attached to the floor, and your arms lower than your heart.
- Do the Eye exercises or blink frequently, then eye fatigue will be relieved.

Chapter 02

Preparations

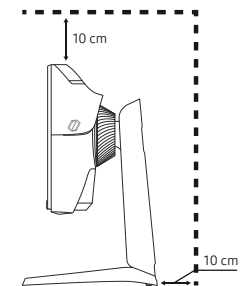
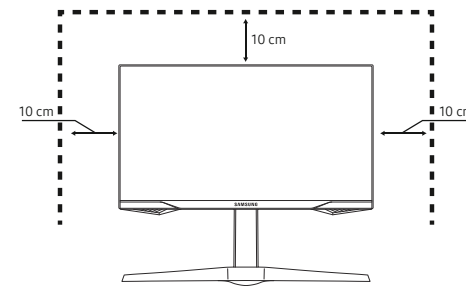
Installation

Checking the space around the product

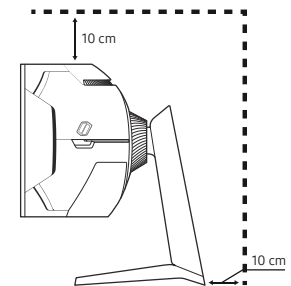
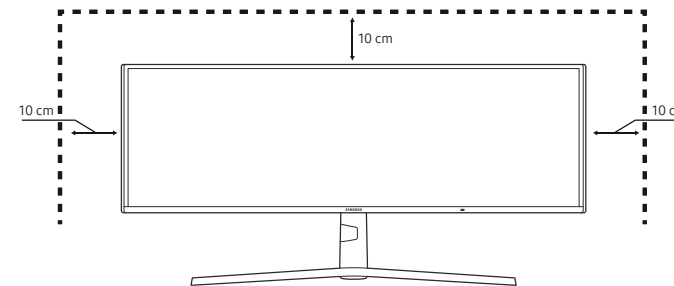
Make sure to have enough space for ventilation when placing the product. An internal temperature rise may cause fire and damage the product. Maintain enough space around the product as shown in the diagram when installing the product.

— The exterior may differ depending on the product.

C27G7*T* / C32G7*T*



C49G9*T*

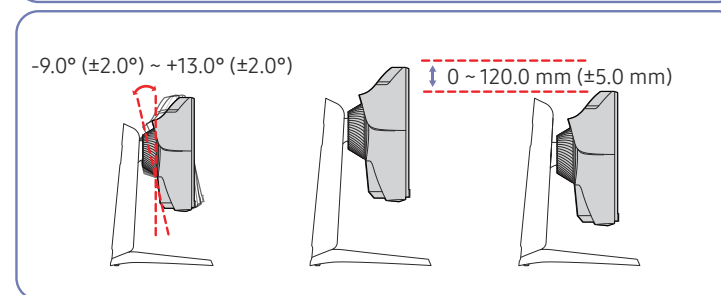
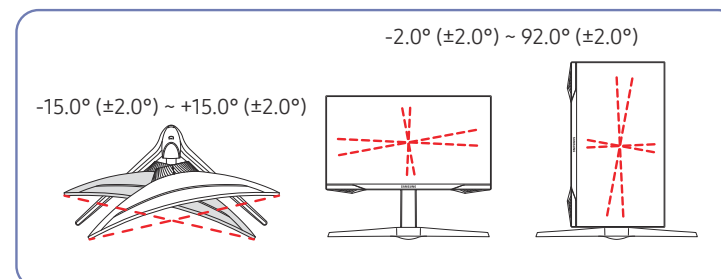


Adjusting the Product Tilt and Height

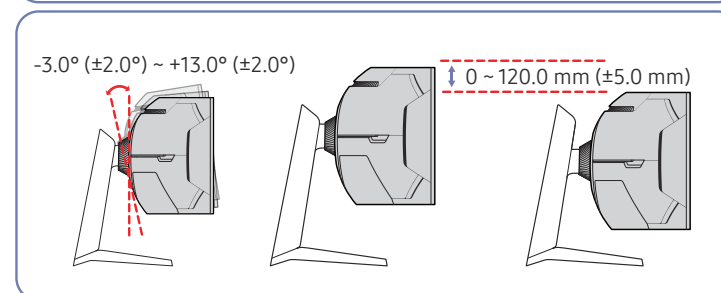
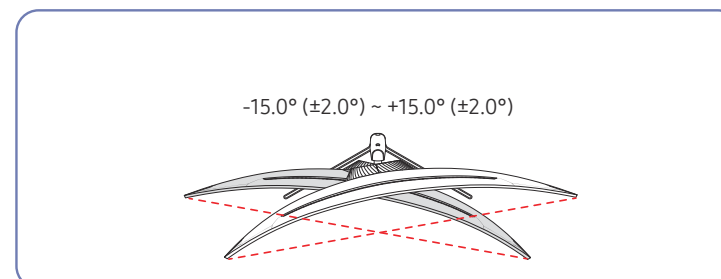
— The colour and shape of parts may differ from what is shown. Specifications are subject to change without notice to improve quality.

- The product tilt can be adjusted.
- When adjusting the tilt and height, hold both sides of the product and avoid using excessive force to prevent damage.
- When adjusting the stand height, you may hear a noise. This noise is generated because the ball inside the stand slides when the stand height is adjusted. It is a normal noise and not a product malfunction.

C27G7*T* / C32G7*T*



C49G9*T*

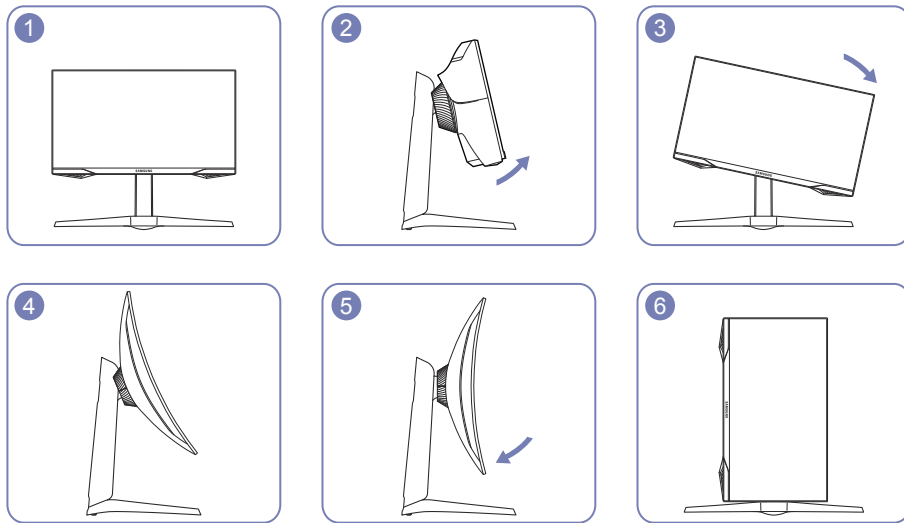


Rotating the Product

C27G7*T* / C32G7*T* model only.

You can rotate your product as shown below.

- The colour and shape of parts may differ from what is shown. Specifications are subject to change without notice to improve quality.



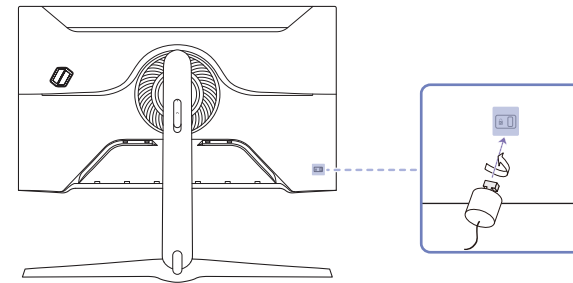
- Be sure to fully extend the stand before rotating the product.
- If you rotate the product without fully extending the stand, the corner of the product may hit the floor and get damaged.
- Do not rotate the product counterclockwise. The product may get damaged.
- When rotating the product, be careful not to damage the product by hitting the object or stand.

Anti-theft Lock

C27G7*T* / C32G7*T* model only.

- An anti-theft lock allows you to use the product securely even in public places.
- The locking device shape and locking method depend on the manufacturer. Refer to the manuals provided with your anti-theft locking device for details.

To lock an anti-theft locking device:

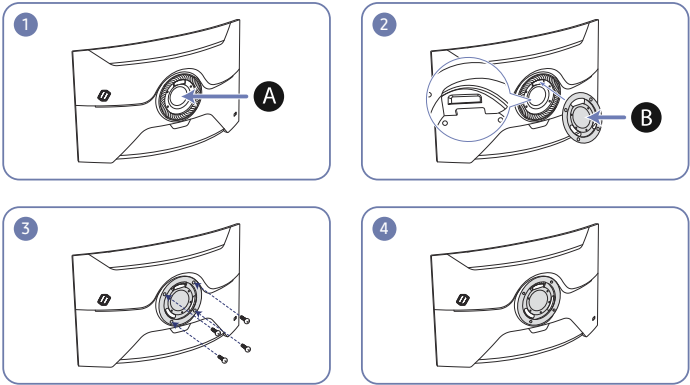


- 1 Fix the cable of your anti-theft locking device to a heavy object such as a desk.
- 2 Put one end of the cable through the loop on the other end.
- 3 Insert the locking device into the anti-theft lock slot at the back of the product.
- 4 Lock the locking device.
 - An anti-theft locking device can be purchased separately.
 - Refer to the manuals provided with your anti-theft locking device for details.
 - Anti-theft locking devices can be purchased at electronics retailers or online.

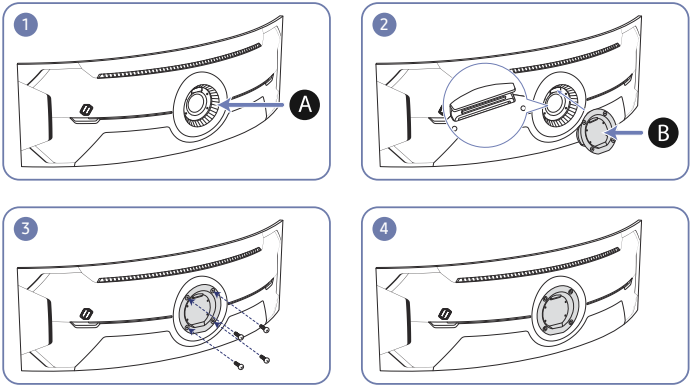
Attaching the BRACKET WALL

⚠ Power the product off and remove the power cable from the power socket.

C27G7*T* / C32G7*T*



C49G9*T*



A Attach the BRACKET WALL here

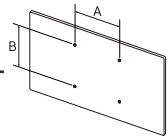
B BRACKET WALL

Align **B** with **A** on the monitor, then tightly fasten with the screws removed from the stand.

- Notes
 - Using a screw longer than the standard length can damage the internal components of the product.
 - The length of screws required for a wall mount that does not comply with the VESA standards may vary depending on the specifications.
 - Do not use screws that do not comply with the VESA standards. Do not attach the wall-mount kit or desktop stand using excessive force. The product may get damaged or fall and cause personal injury. Samsung shall not be held liable for any damage or injury caused by using improper screws or attaching the wall-mount kit or desktop stand using excessive force.
 - Samsung shall not be held liable for any product damage or personal injury caused by using a wall-mount kit other than the one specified or from an attempt to install the wall-mount kit on your own.
 - To mount the product on a wall, ensure you purchase a wall-mount kit that can be installed 10 cm or farther away from the wall.
 - Be sure to use a wall-mount kit that complies with the standards.
 - To install the monitor using a wall mount, disconnect the stand base from the monitor.

Model name	VESA screw hole specs (A * B) in millimetres	Standard Screw	Quantity
------------	---	----------------	----------

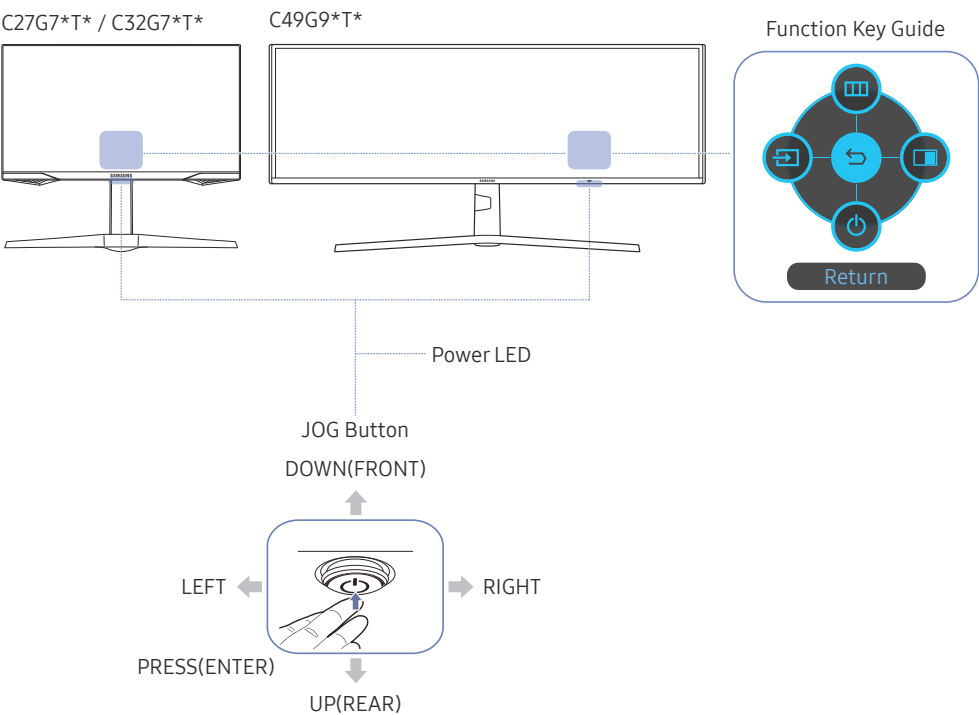
C27G7*T* / C32G7*T* / C49G9*T*	100.0 x 100.0	M4	4 EA
-----------------------------------	---------------	----	------



⚠ Do not attach the BRACKET WALL when the monitor is turned on. This may cause electric shock and might result in injury.

Control Panel

— The colour and shape of parts may differ from what is shown. Specifications are subject to change without notice to improve quality.



Parts	Description
JOG Button	Multi directional button that helps navigate.
Power LED	<p>This LED is power status indicator.</p> <p>— You can select the power LED operation to be enabled or disabled on the menu screen. (→ System → Power LED On)</p>
Function Key Guide	<p>To use the Function Key Guide, press the JOG button when the screen is turned on.</p> <p>— When the product not displays the OSD menu, the JOG Button could be used as below.</p> <p>— Up : Change the settings for Brightness, Contrast, and Sharpness.</p> <p>— Down : Change the Volume setting.</p> <p>— Left or Right : Change the Source setting.</p> <p>— PRESS(ENTER): The selected item will be applied.</p>
Source	Changes the input source. A message will appear on the top left corner of the screen if the input source has been changed.
Menu	Displays the main on-screen menu.
PIP/PBP	Enables the PIP/PBP mode.
Power Off	Turns off the product.
Return	Exits from the menu page.

Chapter 03

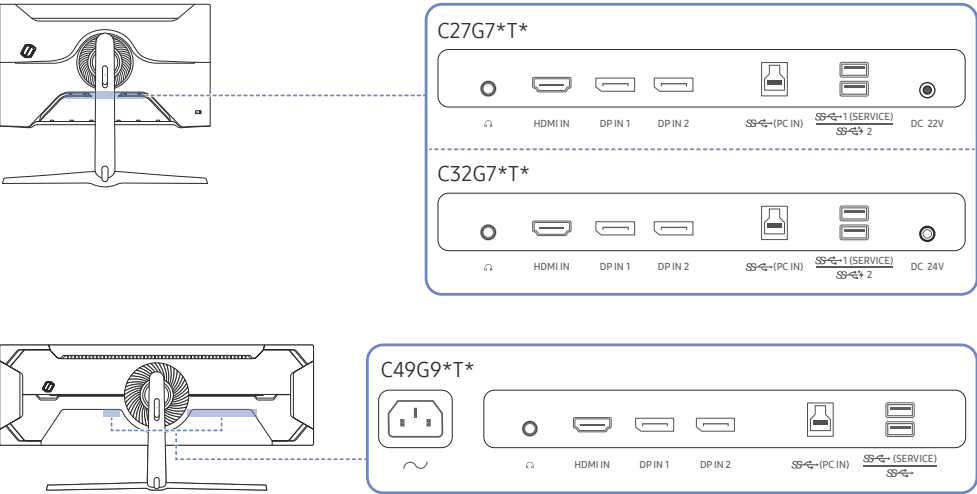
Connecting and Using a Source Device

Read below before connecting the product.

- 1 Before connecting the product, check the shapes of both ports of the supplied signal cables and the shapes and locations of the ports on the product and external device.
 - 2 Before connecting the product, make sure you remove the power cables from both the product and the external device to prevent damage to the product due to a short circuit or over current.
 - 3 After all signal cables have been properly connected, connect the power cables back to the product and the external device.
 - 4 After connecting is completed, make sure you read the manuals to acquaint yourself with the product functions, precautions and other information required to use the product properly.
- Connecting parts may differ in different products.
 - Provided ports may vary depending on the product.

Ports

— The functions available may vary depending on the product model. The colour and shape of parts may differ from what is shown. Specifications are subject to change without notice to improve quality. Refer to the actual product.



Port	Description
	Connect to an audio output device such as headphones or earphones.
HDMI IN	Connects to a source device using an HDMI cable or HDMI-DVI cable.
DP IN 1	Connects to a PC using a DP cable.
DP IN 2	
(PC IN)	Connects to a PC using a USB cable. Compatible with a USB cable version 3.0 or lower. — This port can only connect to a PC.
(SERVICE)	Connect to a USB device. — C27G7*T* / C32G7*T* model only.
	— Super charging is possible using the port only. This port charges devices faster than typical USB port. The speed depends on the connected devices.
(SERVICE)	Connect to a USB device.
	— C49G9*T* model only.
DC 22V	Connects to the AC/DC adapter. — C27G7*T* model only.
DC 24V	Connects to the AC/DC adapter. — C32G7*T* model only.
	Connect the power cord for your monitor to the (POWER IN) port on the back of the product. — C49G9*T* model only.

Connecting and Using a PC

Select a connection method suitable for your PC.

Connection Using the HDMI Cable

HDMI IN



Connection Using an HDMI-DVI Cable

HDMI IN



- The audio function is not supported if the source device is connected using the HDMI-DVI cable.
- The optimum resolution may not be available with an HDMI-DVI cable.

Connection Using an DP Cable

DP IN 1, DP IN 2



- Using the DP cable that came with the product is recommended.
- Use a VESA certified DP1.4 cable or higher and its gender.

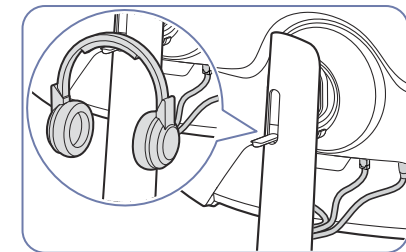
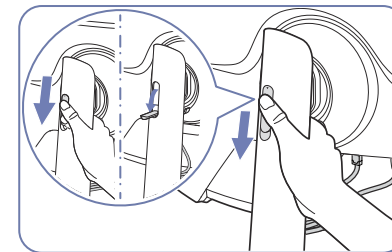
Connecting to headphones or earphones



- Use headphones or earphones when activating sound with an HDMI-HDMI or DP cable.
- The headphones or earphones jack supports only the 3 conductor tip-ring-sleeve (TRS) type.
- Mount the headphones, as shown in the figure below.

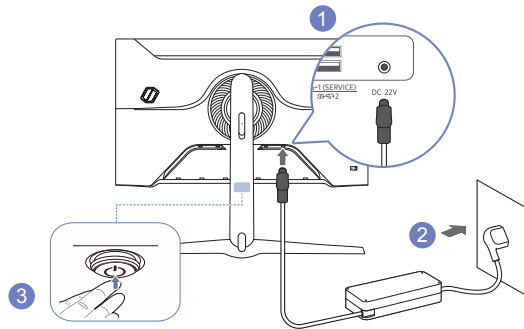
 : Headphones hanger

 : Downward



Connecting the Power

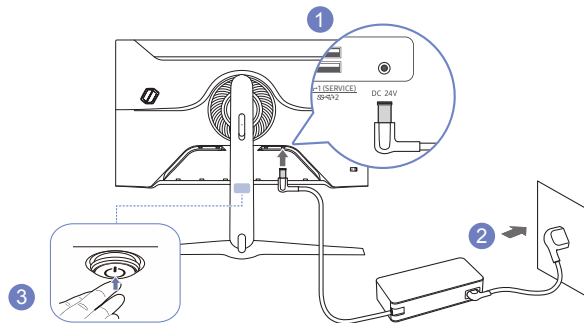
C27G7*T*



- 1 Connect the power cable to the AC/DC adapter. Then, connect the AC/DC adapter to the DC 22V port on the back of the product.
- 2 Next, connect the power cable to the power outlet.
- 3 Press the JOG button at the bottom of the product to turn it on.

— The input voltage is switched automatically.

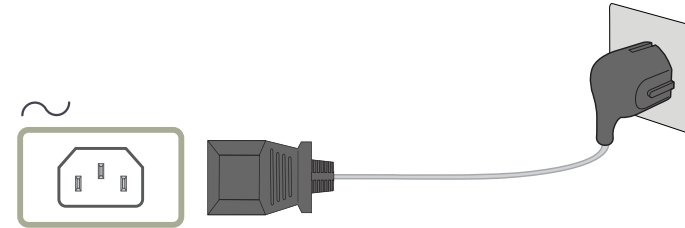
C32G7*T*

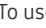


- 1 Connect the power cable to the AC/DC adapter. Then, connect the AC/DC adapter to the DC 24V port on the back of the product.
- 2 Next, connect the power cable to the power outlet.
- 3 Press the JOG button at the bottom of the product to turn it on.

— The input voltage is switched automatically.

C49G9*T*



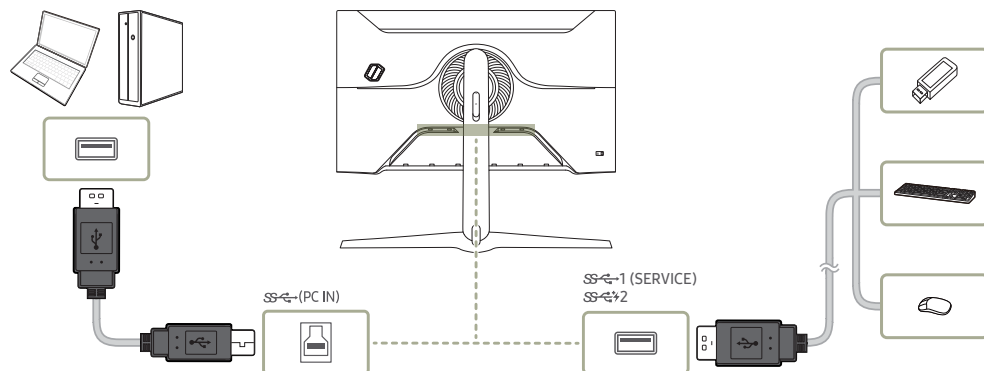
To use the product, connect the power cable to a power outlet and the  (POWER IN) port on the product.

— The input voltage is switched automatically.

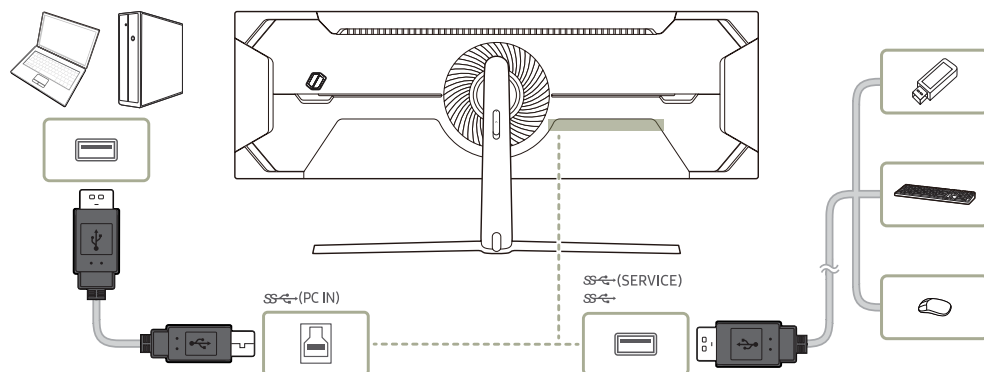
Connecting the Product to a PC as a USB HUB

Using the product as a hub, connect and use various source devices with the product at a time.

C27G7*T* / C32G7*T*



C49G9*T*



- To detect and start a USB device faster, connect the USB device to the SS-C-1 (SERVICE), SS-C-2, SS-C- (SERVICE), SS-C- port on the product. The read/write rate will be affected by the USB device and your PC.
- For USB-related problems caused by OS, drive programmes or software, please contact relevant suppliers.
- With the launch of various USB devices on the market, we cannot guarantee that our products are matched with all USB devices.
- For an external mass-storage HDD requiring external power supply, be sure to connect it to a power source.
- The super charging can only be provided through port SS-C-2. According to the USB battery charging specification, SS-C-2 can support a maximum current of 1.5A. The actual current value depends on the device to be charged.
If the current is too high or an exception occurs, the over-current protection will be triggered. This is a normal setting of the product.
- USB devices requiring high current may not be supported. SS-C-1 (SERVICE), SS-C- (SERVICE), SS-C- can support a maximum current of 900mA, and SS-C-2 can support a maximum current of 1.5A.
- The battery can be charged in the power-saving mode, but it cannot be charged when the product is powered off.
- Charging your USB device is not possible if the power cable is disconnected from the power socket.
- The company is not liable for problems or damages to an external device caused by using an unauthorised cable for the connection.
- Some products do not follow the USB standard, and it may cause a malfunction of the device.

Setting Optimum Resolution

An information message about setting optimum resolution will appear if you power on the product for the first time after purchase.

Select a language on information message and change the resolution on your PC to the optimum setting.

- If the optimum resolution is not selected, the message will appear up to three times for a specified time even when the product is turned off and on again.
- If you want to set the optimum resolution for your computer, please refer to (Q&A) → [“How can I change the resolution?”](#)
- You can adjust the refresh rate according to the screen resolution by selecting **Game** → **Refresh Rate** in the OSD menu.
- To enable the maximum refresh rate, set **Adaptive-Sync** / **FreeSync** to **On** or set **Refresh Rate** to **HDMI : 144 Hz** (C27G7*T* / C32G7*T*), **DisplayPort1, DisplayPort2 : 240 Hz**
- The C27G7*T* and C32G7*T* models support QHD. Use the recommended resolution of 2560 x 1440. If UHD resolution is sent from the input source, the displayed picture quality may not match the picture quality coming from the input source.

Chapter 04

Game

Function Key Guide →  → Game

— The functions available may vary depending on the product model. The colour and shape of parts may differ from what is shown. Specifications are subject to change without notice to improve quality.

Refresh Rate

Change the screen refresh rate. A higher refresh rate can reduce eye strain.

- This menu is not available when **Adaptive-Sync / FreeSync** is set.
 - C27G7*T* / C32G7*T* model only.
- This menu is not available when **PIP/PBP** is enabled.
- To set the resolution to 5120 x 1440 @ 240 Hz from the PC, make sure the **Refresh Rate** is set to **240 Hz**. If **Refresh Rate** is set to **240 Hz**, the monitor may not display the PC screen correctly or a malfunction may occur with PC settings. If either issue occurs, it means that the graphics card on the PC does not support the 240 Hz mode on this monitor properly. To resolve the issue, contact the graphics card manufacturer for assistance.
 - C49G9*T* model only.
- Changing the **Refresh Rate** may cause screen flickering, depending on the PC's graphics card.
- The function is available in a PC equipped with the graphics card that can change the refresh rate. It is unavailable in the devices (e.g. AV devices) with fixed refresh rates. If the function is applied, the screen may have malfunction.
- If the **Refresh Rate** function is in use and the text displayed on the PC screen looks blurry or corrupted, resolve the issue by changing the resolution of the PC screen to the recommended resolution.

Refresh Rate activation conditions and operating specifications

C49G9*T* model only.

- 1 This function is disabled when the HDMI port is in use. The values for the 60/120/240 options are only supported with DisplayPort.
- 2 60 Hz is disabled when **Adaptive-Sync / FreeSync** is **On**. If the setting is changed, the max frame rate values supported in **Adaptive-Sync / FreeSync** mode also change.
- 3 If the **Refresh Rate** setting is changed, the **DisplayPort Ver.** value automatically changes to the recommended value shown below, irrespective of the setting customised by the user.

Refresh Rate	Recommended DisplayPort Ver.	Available DisplayPort Ver. settings
60 Hz	1.2	1.1/1.2
120 Hz	1.4	1.1/1.2/1.4
240 Hz	1.4	1.1/1.2/1.4

Black Equalizer

Adjust the brightness of the dark areas.

As the value gets closer to 1, the darker areas of the screen become brighter, making it easier to find enemies when playing a game. To find enemies more easily during a game, use a lower value.

As the value gets closer to 20, the darker areas of the screen become darker and the contrast increases.

- This menu is not available when **Eye Saver Mode** is enabled.
- This menu is not available when **Picture Mode** is set to **Cinema** or **Dynamic Contrast** mode.
- This menu is not available when **PIP/PBP** is enabled.

Response Time

Accelerate the panel response rate to make video appear more vivid and natural.

- It is best to set **Response Time** to **Standard** or **Faster** when you are not viewing a movie or game.
- This menu is not available when **PIP/PBP** is enabled.
- This menu is not available when **Adaptive-Sync** / **FreeSync** is set.

Adaptive-Sync (for NVIDIA graphics card)

Adaptive-Sync technology is solution that eliminates screen tearing without all the usual lag and latency.

This feature will eliminate screen tearing and lag during game play. Improve your gaming experience.

The displayed **Adaptive-Sync** menu items on the product may vary, depending on the product model and compatibility with the NVIDIA graphics card.

- **Off:** Disable **Adaptive-Sync**.
- **On:** Enable the **Adaptive-Sync** feature with a higher screen frame rate. Screen tearing (abnormal sync between the screen and content) is reduced in this mode. Note, however, that intermittent screen flickering may occur during gameplay.

If you use the **Adaptive-Sync** function while playing a game, the following symptoms may occur:

- The screen may flicker depending on the type of graphics card, the game option settings, or the video being played. Try the following actions: decrease the game setting values, or visit the NVIDIA website to check your graphics driver's version and update it with the latest one.
- When using the **Adaptive-Sync** function, the screen may flicker due to the fluctuation of output frequency from the graphics card.
- The response rate during the game may fluctuate depending on the resolution. A higher resolution generally decreases the response rate.
- The sound quality of the product may be degraded.

- If you encounter any issues when using the function, contact the Samsung Service Centre.
- When the resolution is changed while setting **Adaptive-Sync**, the screen tearing can happen intermittently. Set **Adaptive-Sync** to **Off** and change the resolution.
- The function is unavailable in the devices (e.g. AV devices) that have no NVIDIA graphics card. If the function is applied, the screen may have malfunction.
- Depending on the source device, 4K output from an AV device is supported only when the **Adaptive-Sync** is **Off**.
 - C27G7*T* / C32G7*T* model only.
- Use the DisplayPort cable provided by the manufacturer when using **Adaptive-Sync**.
- Install the latest NVIDIA graphics card driver to enable **Adaptive-Sync**.
- Use Window 10 or higher to enable **Adaptive-Sync**.
- Enable the **Adaptive-Sync** feature while in **DisplayPort** mode only.
- This menu is not available when **PIP/PBP** is enabled.
- If the **Adaptive-Sync** function is in use and the text displayed on the PC screen looks blurry or corrupted, resolve the issue by changing the resolution of the PC screen to the recommended resolution.
- If the **DisplayPort Ver.** is set to **1.1** or **1.2**, the **Adaptive-Sync** mode is disabled.
 - C27G7*T* / C32G7*T* model only.
- If the **DisplayPort Ver.** is set to **1.1** or **1.2** and **Refresh Rate** is set to **60 Hz**, **Adaptive-Sync** mode is disabled.
 - C49G9*T* model only.
- HDMI port only supports AMD **FreeSync**, so even if you connect NVIDIA graphics card to HDMI port, it will be indicated as **FreeSync** on OSD.
 - C27G7*T* / C32G7*T* model only.

The models in the Graphics Cards list supports Adaptive-Sync

Adaptive-Sync can only be used with specific NVIDIA graphics card models. Refer to the following list for supported graphics cards:

Make sure to install the latest official graphics drivers from NVIDIA that support **Adaptive-Sync**.

- For additional NVIDIA graphics card models that support the **Adaptive-Sync** feature, visit the official NVIDIA website.
- Select **Adaptive-Sync Off** if you are using a graphics card from a different manufacturer.
- When applying the **Adaptive-Sync** function via the DisplayPort cable, it may fail to work due to the bandwidth limitation of certain NVIDIA graphics card.
 - C27G7*T* / C32G7*T* model only.

- GeForce GTX 10 series
- GeForce RTX 20 series

FreeSync (for AMD graphics card)

FreeSync technology is solution that eliminates screen tearing without all the usual lag and latency. This feature will eliminate screen tearing and lag during game play. Improve your gaming experience. The displayed **FreeSync** menu items on the monitor may vary, depending on the monitor model and compatibility with the AMD graphics card.

- **Off**: Disable **FreeSync**.
- **On**: Turn on the AMD graphics cards' **FreeSync** function. You may experience intermittent flickers when playing some games.

Apply the optimum resolution when using **FreeSync**.

The refresh rate setting method please refer to Q & A → How can I change the frequency?

- The **FreeSync** function is only enabled in **HDMI** (C27G7*T* / C32G7*T* model only.) or **DisplayPort** mode. Use the HDMI (C27G7*T* / C32G7*T* model only.) /DP cable provided by the manufacturer when using **FreeSync**.
- This menu is not available when **PIP/PBP** is enabled.
- If the **FreeSync** function is in use and the text displayed on the PC screen looks blurry or corrupted, resolve the issue by changing the resolution of the PC screen to the recommended resolution.
- If the **DisplayPort Ver.** is set to **1.1** or **1.2**, the **FreeSync** mode is disabled.
 - C27G7*T* / C32G7*T* model only.
- If the **DisplayPort Ver.** is set to **1.1** or **1.2** and **Refresh Rate** is set to **60 Hz**, **FreeSync** mode is disabled.
 - C49G9*T* model only.

If you use the **FreeSync** function while playing a game, the following symptoms may occur:

- The screen may flicker depending on the type of graphics card, the game option settings, or the video being played. Try the following actions: decrease the game setting values, change the current **FreeSync** mode to **Off**, or visit the AMD website to check your graphics driver's version and update it with the latest one.
- While you are using the **FreeSync** function, the screen may flicker due to variation of the output frequency from the graphics card.
- The response rate during the game may fluctuate depending on the resolution. A higher resolution generally decreases the response rate.
- The sound quality of the monitor may be degraded.

- If you encounter any issues when using the function, contact the Samsung Service Centre.
- If you change the screen resolution while the function is **On**, the screen may intermittently blank out due to the graphic card. Set **FreeSync** to **Off** and change the resolution.
- The function is unavailable in the devices (e.g. AV devices) that have no AMD graphic card. If the function is applied, the screen may have malfunction.
- Depending on the source device, 4K output from an AV device is supported only when the **FreeSync** is **Off**.
 - C27G7*T* / C32G7*T* model only.

The models in the Graphics Cards list supports FreeSync

FreeSync can only be used with specific AMD graphics card models. Refer to the following list for supported graphics cards:

Make sure to install the latest official graphics drivers from AMD that support **FreeSync**.

- For additional AMD graphics card models that support the **FreeSync** feature, visit the official AMD website.
- Select **FreeSync Off** if you are using a graphics card from a different manufacturer.
- When applying the **FreeSync** function via the HDMI cable, it may fail to work due to the bandwidth limitation of certain AMD graphics card.
 - C27G7*T* / C32G7*T* model only.







- | | |
|---|---|
| • Radeon™ RX Vega series | • Radeon™ Pro Duo (2016 edition) |
| • Radeon™ RX 500 series | • Radeon™ R9 Nano series |
| • Radeon™ RX 400 series | • Radeon™ R9 Fury series |
| • Radeon™ R9/R7 300 series (excluding R9 370/X, R7 370/X, R7 265) | • Radeon™ R9/R7 200 series (excluding R9 270/X, R9 280/X) |

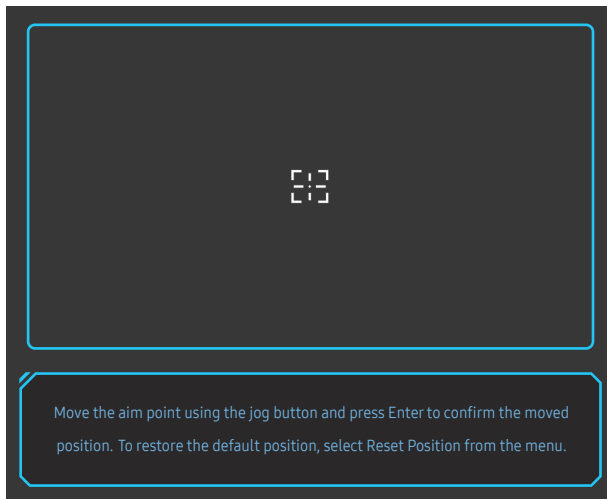
Low Input Lag

Minimise input lag for fast reactions by reducing the video processing time.

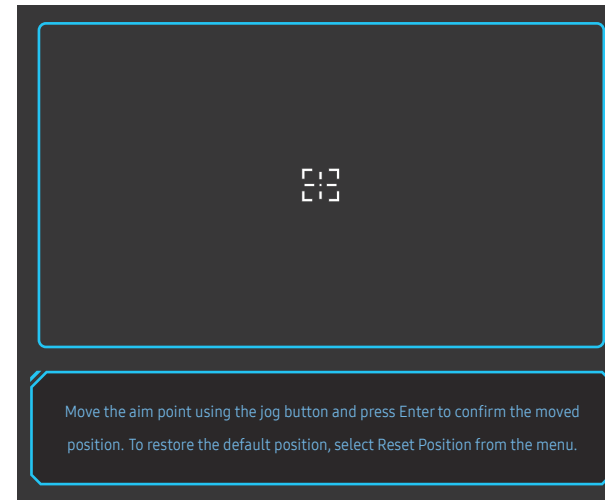
- This menu is not available when **Adaptive-Sync** / **FreeSync** is enabled.
- This menu is not available when **Refresh Rate** is set to 60Hz.
 - C27G7*T* / C32G7*T* model only.
- If the refresh rate of the PC is different from the setting for **Refresh Rate** on the product, the function may not be supported.
- This menu is not available when **PIP/PBP** is enabled.

Virtual Aim Point

- **Off:** **Virtual Aim Point** is not available while **Off** is selected.
 -      : Select the preferred aim point style.
 - **Reset Position:** Restore the aim point position to the default.
- This menu is not available when **PIP/PBP** is enabled.

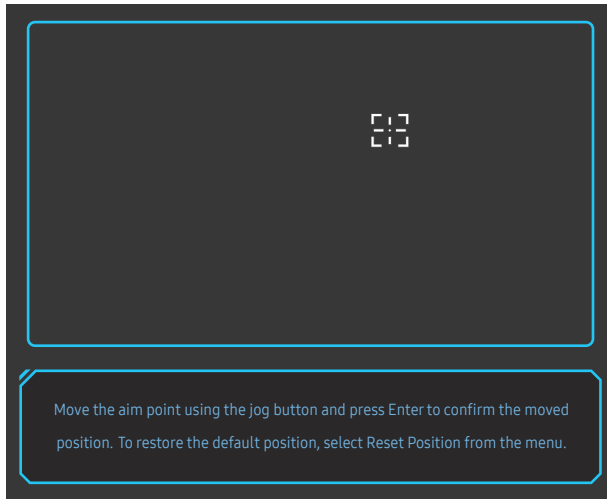



- 1 The aim point is displayed in the middle of the screen. Position adjustment is only possible within the displayed rectangular area.

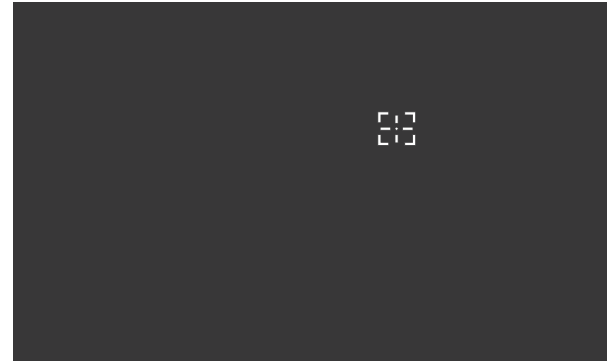


2 The aim point is adjusted by 1 pixel per single move of the JOG button.

- The aim point no longer moves after having reached the displayed rectangular area.
- You can move continuously by holding down the JOG button.



3 After configuring settings is completed, press the  Enter key of the JOG button. The aim point is fixed to the specified position and the settings screen disappears.



4 Position is resetted to centre when select  → **Game** → **Virtual Aim Point** → **Reset Position**.



Screen Size

Select the best screen size and ratio.

— This menu is not available when **Adaptive-Sync** / **FreeSync** is enabled.

— This menu is not available when **PIP/PBP** is enabled.

In PC mode

- **Auto**: Display the picture according to the aspect ratio of the input source.
- **Wide**: Display the picture in full screen regardless of the aspect ratio of the input source.
- **17" (4:3)**: Use a 4:3 aspect ratio on a 17-inch screen. Pictures with a different aspect ratio will not be displayed.
- **19" (4:3)**: Use a 4:3 aspect ratio on a 19-inch wide screen. Pictures with a different aspect ratio will not be displayed.
- **19" Wide (16:10)**: Use a 16:10 aspect ratio on a 19-inch wide screen. Pictures with a different aspect ratio will not be displayed.
- **21.5" Wide (16:9)**: Use a 16:9 aspect ratio on a 21.5-inch wide screen. Pictures with a different aspect ratio will not be displayed.
- **22" Wide (16:10)**: Use a 16:10 aspect ratio on a 22-inch wide screen. Pictures with a different aspect ratio will not be displayed.
- **23" Wide (16:9)**: Use a 16:9 aspect ratio on a 23-inch wide screen. Pictures with a different aspect ratio will not be displayed.
- **27" Wide (16:9)**: Use a 16:9 aspect ratio on a 27-inch wide screen. Pictures with a different aspect ratio will not be displayed.
 - C49G9*T* model only.
- **29" Wide (21:9)**: Use a 21:9 aspect ratio on a 29-inch wide screen. Pictures with a different aspect ratio will not be displayed.
 - C49G9*T* model only.

In AV mode

- **4:3**: Display the picture with an aspect ratio of 4:3. Suitable for videos and standard broadcasts.
- **16:9**: Display the picture with an aspect ratio of 16:9.
- **21:9**: Display the picture with an aspect ratio of 21:9.
 - C49G9*T* model only.
- **32:9**: Display the picture with an aspect ratio of 32:9.
 - C49G9*T* model only.
- **Screen Fit**: Display the picture with the original aspect ratio without cutting off.
- **17" (4:3)**: Use a 4:3 aspect ratio on a 17-inch screen. Pictures with a different aspect ratio will not be displayed.
- **19" (4:3)**: Use a 4:3 aspect ratio on a 19-inch wide screen. Pictures with a different aspect ratio will not be displayed.
- **19" Wide (16:10)**: Use a 16:10 aspect ratio on a 19-inch wide screen. Pictures with a different aspect ratio will not be displayed.
- **21.5" Wide (16:9)**: Use a 16:9 aspect ratio on a 21.5-inch wide screen. Pictures with a different aspect ratio will not be displayed.
- **22" Wide (16:10)**: Use a 16:10 aspect ratio on a 22-inch wide screen. Pictures with a different aspect ratio will not be displayed.
- **23" Wide (16:9)**: Use a 16:9 aspect ratio on a 23-inch wide screen. Pictures with a different aspect ratio will not be displayed.
- **27" Wide (16:9)**: Use a 16:9 aspect ratio on a 27-inch wide screen. Pictures with a different aspect ratio will not be displayed.
 - C49G9*T* model only.
- **29" Wide (21:9)**: Use a 21:9 aspect ratio on a 29-inch wide screen. Pictures with a different aspect ratio will not be displayed.
 - C49G9*T* model only.

— The function may not be supported depending on the ports provided with the product.

— Changing the **Screen Size** is available when the following conditions are satisfied.


— The input source is 480p, 576p, 720p, or 1080p and product can display normally (Not every model can support all of these signals.).

— This can only be set when the external input is connected through HDMI/DP and **PC/AV Mode** is set to **AV**.

— This option is available when **Adaptive-Sync** / **FreeSync** is set to **Off**.

Chapter 05

Picture

Function Key Guide →  → **Picture**

— The functions available may vary depending on the product model. The colour and shape of parts may differ from what is shown. Specifications are subject to change without notice to improve quality.

Picture Mode

This menu provides an optimum picture quality suitable for the environment where the product will be used.

— This menu is not available when **Eye Saver Mode** is enabled.

— This menu is not available when **PIP/PBP** is enabled.

— **Picture Mode** is disabled when the input is an HDR signal.

In PC mode

- **Custom**: Customise the screen settings.
- **High Bright**: Maximise the screen brightness.
- **FPS**: Increase the brightness of darker areas of the FPS (First-Person Shooter) game screen. This mode increases visibility of your enemies during a FPS (First-Person Shooter) game.
- **RTS**: Increase the colour temperature and contrast ratio to improve visibility of the RTS (Real-Time Strategy) screen and minimap.
- **RPG**: This mode is optimised for 3D graphics and instant messaging on the RPG (Role Playing Game) game screen.
- **AOS**: Increase the contrast ratio to obtain a picture quality optimised for the AOS (Aeon Of Strife) game screen.
- **sRGB**: Adjust the colour system to **sRGB** mode. This is the standard mode of this monitor.
- **Cinema**: Obtain the brightness and sharpness of monitors suitable for enjoying video and DVD content.
- **Dynamic Contrast**: Obtain balanced brightness through automatic contrast adjustment.

In AV mode

When the external input is connected through HDMI/DP and **PC/AV Mode** is set to **AV**, **Picture Mode** has four picture settings (**Dynamic**, **Standard**, **Movie** and **Custom**) that are preset at the factory. You can activate either **Dynamic**, **Standard**, **Movie** or **Custom**. You can select **Custom** which automatically recalls your personalised picture settings.

- **Dynamic**: Select this mode to view a sharper image than in **Standard** mode.
- **Standard**: Select this mode when the surroundings are bright.
- **Movie**: Select this mode when the surroundings are dark. This will save power and reduce eye fatigue.
- **Custom**: Select this mode when you want to adjust the image according to your preferences.

— The **Picture Mode** feature is only activated at a certain **AV** resolution, such as 720P @ 60Hz and 1080P @ 60Hz.

Brightness

You can adjust the general brightness of the picture. (Range: 0~100)

A higher value will make the picture appear brighter.

- This menu is not available when **Eye Saver Mode** is enabled.
- This menu is not available when **Picture Mode** is set to **Dynamic Contrast** mode.

Contrast

Adjust the contrast between the objects and background. (Range: 0~100)

A higher value will increase the contrast to make the object appear clearer.

- This menu is not available when **Picture Mode** is set to **Cinema**, **sRGB** or **Dynamic Contrast** mode.

Sharpness

Make the outline of objects more clear or blurry. (Range: 0~100)

A higher value will make the outline of objects clearer.

- This menu is not available when **Picture Mode** is set to **Cinema** or **Dynamic Contrast** mode.
- This menu is not available when **PIP/PBP** is enabled.

Color

Adjust the tint of the screen.

- This menu is not available when **Eye Saver Mode** is enabled.
- This menu is not available when **Picture Mode** is set to **Cinema**, **sRGB** or **Dynamic Contrast** mode.
- This menu is not available when **PIP/PBP** is enabled.
- **Color Tone:** Select a colour tone that best suits your viewing needs.
 - **Cool 2:** Set the colour temperature to be cooler than **Cool 1**.
 - **Cool 1:** Set the colour temperature to be cooler than **Normal** mode.
 - **Normal:** Display the standard colour tone.
 - **Warm 1:** Set the colour temperature to be warmer than **Normal** mode.
 - **Warm 2:** Set the colour temperature to be warmer than **Warm 1**.
 - **Custom:** Customise the colour tone.
- When the external input is connected through HDMI/DP and **PC/AV Mode** is set to **AV**, **Color Tone** has four colour temperature settings (**Cool**, **Normal**, **Warm** and **Custom**).
- **Red:** Adjust the red saturation level. Values closer to 100 mean greater intensity for the colour.
- **Green:** Adjust the green saturation level. Values closer to 100 mean greater intensity for the colour.
- **Blue:** Adjust the blue saturation level. Values closer to 100 mean greater intensity for the colour.
- **Gamma:** Adjust the middle level of luminance.
 - **Mode1 / Mode2 / Mode3**

Black Level

If a DVD player or set-top box is connected to the product via HDMI, image quality degradation (contrast/colour degradation, black level, etc.) may occur, depending on the connected source device.

In such case, **Black Level** can be used to adjust the image quality.

— This function is only available in **HDMI** mode.

- **Normal**: Select this mode when there is no contrast ratio degradation.
- **Low**: Select this mode to reduce the black level and increase the white level when there is a contrast ratio degradation.

— **Black Level** may not be compatible with some source devices.

— The **Black Level** feature is only activated at a certain **AV** resolution, such as 720P @ 60Hz and 1080P @ 60Hz.

— This menu is not available when **PIP/PBP** is enabled.

— Adjust the **Black Level** because the image quality may differ depending on the external device.

Eye Saver Mode

Set to an optimum picture quality suitable for eye relaxation.

TÜV Rheinland “Low Blue Light Content” is a certification for products which meet requirements for lower blue light levels. When **Eye Saver Mode** is ‘On’, the blue light that wavelength is around 400nm will decrease, and it will provide an optimum picture quality suitable for eye relaxation. At the same time, the blue light level is lower than in the default settings, and it was tested by TÜV Rheinland and certified as it met the requirements of TÜV Rheinland “Low Blue Light Content” standards.

Screen Adjustment

— This option is only available when **PC/AV Mode** is set to **AV**.

— This menu is only available when **Screen Size** is set to **Screen Fit** in **AV** Mode.

When a 480P or 576P or 720P or 1080P signal is input in **AV** mode and the product can display normally, select **Screen Fit** to adjust horizontal position and vertical position in 0-6 levels.

— This menu is not available when **PIP/PBP** is enabled.

Configuring H-Position & V-Position


H-Position: Move the screen to the left or right.

V-Position: Move the screen up or down.

Calibration Report

Chapter 06

Configuring the PIP/PBP Settings

Function Key Guide →  → PIP/PBP

- The functions available may vary depending on the product model. The colour and shape of parts may differ from what is shown. Specifications are subject to change without notice to improve quality.
- If the **PIP/PBP** function is in use and the text displayed on the PC screen looks blurry or corrupted, resolve the issue by changing the resolution of the PC screen to the recommended resolution.
- Do not arbitrarily change the **PIP/PBP** function while playing a game. Otherwise, some game apps may not respond, resulting in screen errors.

PIP/PBP Mode







Turn PIP/PBP Mode on or off.

If the source device does not send a video signal at an appropriate resolution for display in PIP/PBP mode, a blank screen may appear when the PIP/PBP function is turned on.

- 4K output from an AV device is not supported when **PIP/PBP Mode** is **On**.
 - C27G7*T* / C32G7*T* model only.



Mode Type

Select the size and aspect ratio of the sub-screen.

-  **PBP** /  **PIP**
 - C27G7*T* / C32G7*T* model only.
 -  /  /  / 
 - C49G9*T* model only.
- This option is available when **PIP/PBP Mode** is set to **On**.





Screen Size

Select sub-screen size.

-  / 
- This option is available when **PIP/PBP Mode** is set to **On**.
- This option is available when **Mode Type** is set to **PIP**.

Screen Position

Select the position of the sub-screen from the available options.

-  /  /  / 
- This option is available when **PIP/PBP Mode** is set to **On**.
- This option is available when **Mode Type** is set to **PIP**.

Source

Select the source for each screen.

— This option is available when **PIP/PBP Mode** is set to **On**.

Sound Source

Set which screen you want to hear the sound for.

PIP mode



PBP mode



— This option is available when **PIP/PBP Mode** is set to **On**.

Screen Ratio

Set the Screen Ratio for PBP mode.

In PC mode

- **Auto**: Display the picture according to the aspect ratio of the input source.
- **Wide**: Display the picture in full screen regardless of the aspect ratio of the input source.

In AV mode

- **4:3**: Display the picture with an aspect ratio of 4:3. Suitable for videos and standard broadcasts.
- **16:9**: Display the picture with an aspect ratio of 16:9.
- **21:9**: Display the picture with an aspect ratio of 21:9.
 - C49G9*T* model only.
- **Screen Fit**: Display the picture with the original aspect ratio without cutting off.

— The function may not be supported depending on the ports provided with the product.

— Changing the **Screen Ratio** is available when the following conditions are satisfied.

— The input source is 480p, 576p, 720p, or 1080p and product can display normally (Not every model can support all of these signals.).

— This can only be set when the external input is connected through HDMI/DP and **PC/AV Mode** is set to **AV**.

— This option is available when **Adaptive-Sync** / **FreeSync** is disabled.

— This option is available when **PIP/PBP Mode** is set to **On**.

Contrast

Adjust the contrast level. Values closer to 100 mean a bigger light/dark contrast.

— This option is available when **PIP/PBP Mode** is set to **On**.

Chapter 07

OnScreen Display

Function Key Guide →  → OnScreen Display

— The functions available may vary depending on the product model. The colour and shape of parts may differ from what is shown. Specifications are subject to change without notice to improve quality.

Language

Set the menu language.

- A change to the language setting will only be applied to the onscreen menu display.
- It will not be applied to other functions on your PC.


Display Time

The OSD menu will automatically disappear if the menu is not used for a specified period of time.

Display Time is a function to specify the time which you want the OSD menu to disappear.

Chapter 08

System

Function Key Guide →  → System

— The functions available may vary depending on the product model. The colour and shape of parts may differ from what is shown. Specifications are subject to change without notice to improve quality.

Infinity Core Lighting

Turn on or off the LED lighting behind the screen.

Local Dimming

Control the brightness of individual areas on the screen to maximise contrast automatically.

- **Off:** Deactivate the **Local Dimming** function.
 - **Auto:** **Local Dimming** is automatically activated or deactivated based on whether the content is HDR.
 - When the Monitor detects that the input video contains HDR information, the Information menu and the Source menu will display HDR. In this case, Auto needs to be selected. (refer to [Information](#))
 - **On:** Activate the **Local Dimming** function.
 - C27G7*T* / C32G7*T* model only.
- This menu is not available when **Eye Saver Mode** is enabled.
- Use **Off** or **Auto** mode when not playing a video or game. Otherwise, screen flickering may occur.
- This menu is not available when **PIP/PBP** is enabled.

Volume

Adjust the **Volume** controlling the JOG button LEFT/RIGHT.

- To activate the **Mute** function, access the **Volume** control screen, then use the JOG button to move the focus down.
- To deactivate the **Mute** function, access the **Volume** control screen, then increase or decrease the **Volume**.

Dynamic Brightness

Automatically adjust the Brightness to provide the best possible screen contrast under the current conditions.


- **Off / On**
- This menu is not available when **Eye Saver Mode** is enabled.
- This menu is not available when **PIP/PBP** is enabled.

Off Timer Plus

Configuring Off Timer

Off Timer: Turn on **Off Timer** mode.

Turn Off After: The off timer can be set within a range of 1 to 23 hours. The product will automatically power off after the specified number of hours.

- This option is only available when **Off Timer** is set to **On**.
- For products for the market in some regions, the **Off Timer** is set to automatically activate 4 hours after the product powers on. This is done in accordance with power supply regulations. If you do not want the timer to activate, go to  → **System** → **Off Timer Plus** and set **Off Timer** to **Off**.

Configuring Eco Timer

Eco Timer: Turn on **Eco Timer** mode.


Eco Off After: The **Eco Off After** can be set between 10 and 180 minutes. The product will automatically power off after the specified time has elapsed.

- This option is only available when **Eco Timer** is set to **On**.

PC/AV Mode

Set **PC/AV Mode** to **AV**. The picture size will be enlarged.

This option is useful when you view a movie.

- Set to **PC** when connected to a PC.
- Set to **AV** when connected to an AV device.
- Monitors with a display area of 16:9 or 16:10 are only supported.
- If the product is in **HDMI**, **DisplayPort1**, **DisplayPort2** mode and the screen says **Check the cable connection and the settings of the source device**, press the JOG button to display the Function Key Guide screen and then select  → **System** → **PC/AV Mode** → **HDMI**, **DisplayPort1**, **DisplayPort2** → **PC** or **AV**.
- This menu is not available when **PIP/PBP** is enabled.
 - C27G7*T* / C32G7*T* model only.

USB Super Charging



C27G7*T* / C32G7*T* model only.

Charge the battery of a connected source device quickly using the **SS-C/2** port on the product.

- **Off:** Disable **USB Super Charging**.
- **On:** Enable the function to quickly charge a source device connected to the **SS-C/2** port.
- Super charging is available via the **SS-C/2** port. The charging speed may vary, depending on the connected device.
- Quick battery charging may not be supported and/or charging may take more time on some mobile devices.
- When super charging is turned off for the **SS-C/2** port, use this port for regular speed charging and data transfer.
- If a USB 2.0 or lower device is connected to the **SS-C/2** port and super charging is turned on, data transfer is impossible, but it is possible if a USB device is connected.
 - ※ These ports may not be compatible with new USB devices that may be released in the future.
- If a device, such as a mouse, keyboard or memory storage device, is connected to the **SS-C/2** port and the device is USB 2.0 or lower, turn off super charging.
- If super charging is turned on using the OSD settings menu, all devices connected to USB ports 1 through 2 on the monitor are re-recognised. This ensures optimum charging.
 - ※ Before turning on super charging, close all files on storage devices connected to USB ports.

DisplayPort Ver.

Select your Displayport.

- Incorrect settings may cause the screen to go blank. If this occurs, check the device specifications.
- If the product (when set to **DisplayPort**) is displaying the message **Check the cable connection and the settings of the source device**, press the JOG button to display the Function Key Guide screen and then select  → **System** → **DisplayPort Ver.** → **1.1, 1.2** or **1.4**.
- If setting the **DisplayPort Ver.** to **1.1**, for the bandwidth limitation of the DisplayPort 1.1 protocol, the actual maximum output refreshing rate of the graphics cards cannot achieve the level of 120 Hz/144 Hz (C27G7*T* / C32G7*T*), 120 Hz (C49G9*T*).
- If the PC has entered BIOS mode and the BIOS screen does not appear, go to the following path and then select the mode.  → **System** → **DisplayPort Ver.** → **1.1** or **1.2**.
- The DisplayPort Ver. option is disabled if **Adaptive-Sync** is set to **On** and there is a signal input.
 - C49G9*T* model only.

Input Port Ver.

Select an HDMI version.

- The supportable device and resolution may differ depending on its version.
- When the version is changed, the screen may blink.
- If you set the **HDMI Mode** to **1.4**, some high resolutions may not be supported because of bandwidth limitation of the HDMI 1.4 protocol.
- When the setting is not appropriate, a blank screen may appear. In this case, check the specifications of the device.
- Set **HDMI Mode** to **1.4** if the monitor is connected to an HDMI device and the monitor does not display the screen properly, displays a blank screen, or does not play sound at all.

Auto Source Switch

By activating, a new connected source is displayed automatically.

- This function may not be supported depending on the model or geographical area.

Key Repeat Time

Control the response rate of a button when the button is pressed.

Acceleration, 1 sec, or 2 sec can be selected. If **No Repeat** is selected, a command responds only once when a button is pressed.

Power LED On

Configure the settings to enable or disable the power LED located at the lower part of the product.

- **Working:** The power LED is on when the product is turned on.
- **Stand-by:** The power LED is on when the product is turned off.

Chapter 09

Support

Function Key Guide →  → **Support**

— The functions available may vary depending on the product model. The colour and shape of parts may differ from what is shown. Specifications are subject to change without notice to improve quality.


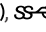

Self Diagnosis

Perform this test when you experience a problem with your monitor's picture.

— Never turn off the power nor change the input source during self diagnosis. If possible, try not to interrupt testing.

Software Update

Update software using an update file on a USB device.

- 1 Save the update file (in .bin format) that you downloaded from the Samsung website (<http://www.samsung.com/sec>) to a USB storage device.
- 2 Connect the USB device to the SERVICE port (-1 (SERVICE),  (SERVICE)) on the monitor.
Select  → **Support** → **Software Update**.
- 3 Follow the instructions on the screen to proceed with update.
- 4 Your product will turn itself off and on again automatically after completing update, and then turn off your product.
- 5 Remove the power cord from the power outlet and then reconnect the cord after turning off.

— To perform software update by using a USB memory, first format the USB memory to FAT32.

— When updating by a USB device, be sure to use the device whose version of USB 3.0 or lower.

— When performing update, make sure that only one BIN file (.bin) (C27G7*T* / C32G7*T*) / img file (.img) (C49G9*T*) is saved in the root directory.

— If the **No update files found on your USB device. Please check your USB device and try again.** message is displayed, this is probably due to the following reasons.

— A USB memory is not connected to the SERVICE port (-1 (SERVICE),  (SERVICE)).

— The files in the connected USB memory are not compatible formats.

— There are no valid update files found in the connected USB memory. (There are no update files saved in the memory or the file names are incorrect.)

— Do not turn off the product. And prevent the updating from any interruption as far as possible. In general, the product returns to the previous version if an update is interrupted.

Information

View the current software information. Refer to the actual monitor screen.

Reset All

Return all the settings for the product to the default factory settings.

Chapter 10

Installing the Software

Easy Setting Box



Easy Setting Box enables users to use the product by partitioning multiple sections.

To install the latest version of **Easy Setting Box**, download it from the Samsung website (<http://www.samsung.com>).

- The software may not work properly if you do not restart the PC after the installation.
- The Easy Setting Box icon may not appear depending on the PC system and the product specifications.
- If the shortcut icon does not appear, press the F5 key.

Restrictions and Problems with the Installation

The **Easy Setting Box** installation may be affected by the Graphics Card, Motherboard and the Networking Environment.

System Requirements

OS	Hardware
<ul style="list-style-type: none">• Windows 7 32Bit/64Bit• Windows 8 32Bit/64Bit• Windows 8.1 32Bit/64Bit• Windows 10 32Bit/64Bit	<ul style="list-style-type: none">• At least 32MB of memory• At least 60MB of free space on the hard disk drive

Driver Installation

- You can set the optimum resolution and frequency for this product by installing the corresponding drivers.
- To install the latest version of the product driver, download it from the Samsung website (<http://www.samsung.com>).

Chapter 11

Troubleshooting Guide

Requirements Before Contacting Samsung Customer Service Centre

— Before calling Samsung Customer Service Centre, test your product as follows. If the problem persists, contact Samsung Customer Service Centre.

Product diagnosis (Screen issue)

If a problem occurs with the monitor screen, run [Self Diagnosis](#) to check that the monitor is working properly.

Checking the Resolution and Frequency

If a resolution that is not supported (see the [Standard Signal Mode Table](#)) is selected, the **Not Optimum Mode** message may appear for a short time or the screen may not be displayed properly.

— The displayed resolution may vary, depending on the PC system settings and cables.

Check the following.

Installation issue (PC mode)

The screen keeps switching on and off.

Check the cable connection between the product and PC, and ensure the connectors are locked.

Blank spaces are found on all four sides of the screen when an HDMI or HDMI-DVI cable is connected to the product and PC.

The blank spaces found on the screen have nothing to do with the product.

Blank spaces on the screen are caused by the PC or graphics card. To resolve the problem, adjust the screen size in the HDMI or DVI settings for the graphics card.

If the graphics card settings menu does not have an option to adjust the screen size, update the graphics card driver to the latest version.

(Please contact the graphics card or PC manufacturer for further details about how to adjust the screen settings.)

Screen issue


The power LED is off. The screen will not switch on.

Check that the power cable is connected properly.

If a problem occurs with the monitor screen, run [Self Diagnosis](#) to check that the monitor is working properly.

The message **Check the cable connection and the settings of the source device.** appears.

Check that the cable is properly connected to the product.

If the monitor is in **HDMI**, **DisplayPort1** or **DisplayPort2** mode, press the JOG button to display the Function Key Guide screen and select the  → **System** → **PC/AV Mode** → **HDMI**, **DisplayPort1**, **DisplayPort2** → **PC** or **AV**.

Not Optimum Mode is displayed.

This message appears when the signal from the graphics card exceeds the maximum resolution or frequency for the product.

Change the maximum resolution and frequency to suit the product performance, referring to Standard Signal Mode Table ([P.43](#)).

The images on the screen look distorted.

Check the cable connection to the product.

The screen is not clear. The screen is blurry.

Remove any accessories (video extension cable, etc.) and try again.

Set the resolution and frequency to the recommended level.

The screen appears unstable and shaky. There are shadows or ghost images left on the screen.

Check that the resolution and frequency for the PC are within the range of resolution and frequency compatible with the product. Next, if required, change the settings, referring to Standard Signal Mode Table ([P.43](#)) in this manual and the **Information** menu on the product.

The screen is too bright. The screen is too dark.

Adjust **Brightness** and **Contrast**.

Screen colour is inconsistent.

Change the **Color** settings.

The colours on the screen have a shadow and are distorted.

Change the **Color** settings.

White does not really look white.

Change the **Color** settings.

There is no image on the screen and the power LED blinks every 0.5 to 1 second.

The product is operating in power-saving mode.

Press any key on the keyboard or move the mouse to return to normal operating mode.

Text is blurry.

If using a Windows OS (e.g. Windows 7, Windows 8, Windows 8.1 or Windows 10): Go to **Control Panel** → **Fonts** → **Adjust ClearType text** and change **Turn on ClearType**.

Video playback is choppy.

Playback of high-definition large video files can be choppy. This may be because the video player is not optimised for the PC resource.

Try playing the file on another video player.

Sound issue

There is no sound.

Re-check the condition of the connected audio cable and/or adjust the volume.

Check the volume.

Check whether audio is set to mute.

The volume is too low.

Adjust the volume.

If the volume is still low after turning it up to the maximum level, adjust the volume on your PC sound card or software programme.

Video is available but there is no sound.

Sound cannot be heard if an HDMI-DVI cable is used to connect the input device.

Connect the device using an HDMI cable or a DP cable.

Source device issue

A beeping sound is heard when my PC is booting.

If a beeping sound is heard when your PC is booting, have your PC serviced.

Q & A

— Refer to the user manual for your PC or graphics card for further instructions on adjustment.

— The path to the settings depends on the installed OS.

How can I change the frequency?

Set the frequency on your graphics card.

- Windows 7: Go to Control Panel → Appearance and Personalization → Display → Screen Resolution → Advanced settings → Monitor, and adjust Screen Refresh Rate under Monitor settings.
- Windows 8(Windows 8.1): Go to Settings → Control Panel → Appearance and Personalization → Display → Screen Resolution → Advanced settings → Monitor, and adjust Refresh rate under Monitor settings.
- Windows 10: Go to Settings → System → Display → Advanced display settings → Display adapter properties → Monitor, and adjust Screen refresh rate under Monitor settings.

How can I change the resolution?

- Windows 7: Go to Control Panel → Appearance and Personalization → Display → Screen Resolution → Adjust Resolution.
- Windows 8(Windows 8.1): Go to Settings → Control Panel → Appearance and Personalization → Display → Adjust Resolution, and adjust the resolution.
- Windows 10: Go to Settings → System → Display → Advanced display settings, and adjust the resolution.

How do I set power-saving mode?

- Windows 7: Go to Control Panel → Appearance and Personalization → Personalization → Screen Saver Settings → Power options or BIOS SETUP on the PC.
 - Windows 8(Windows 8.1): Go to Settings → Control Panel → Appearance and Personalization → Personalize → Screen Saver Settings → Power options or BIOS SETUP on the PC.
 - Windows 10: Go to Settings → Personalization → Lock screen → Screen timeout settings → Power & sleep or BIOS SETUP on the PC.
-

Chapter 12

Specifications

General

Model Name	C27G7*T*	C32G7*T*	C49G9*T*
Size	27 Class (26.9 Inches / 68.4 cm)	32 Class (31.5 Inches / 80.0 cm)	49 Class (48.7 Inches / 123.8 cm)
Display area	596.736 mm (H) x 335.664 mm (V)	697.344 mm (H) x 392.256 mm (V)	1191.936 mm (H) x 335.232 mm (V)
Pixel Pitch	0.233 mm (H) x 0.233 mm (V)	0.272 mm (H) x 0.272 mm (V)	0.2328 mm (H) x 0.2328 mm (V)
Maximum Pixel Clock	986.976 MHz	986.976 MHz	2018.5 MHz
Power Supply	AC100-240V~ 50/60Hz Based on the AC voltage of the adapter. For the DC voltage of the product, refer to the product label.		AC100-240V~ 50/60Hz Refer to the label at the back of the product as the standard voltage can vary in different countries.
Signal connectors	HDMI, DisplayPort		
Environmental conditions	Operating		
	Temperature: 10 °C – 40 °C (50 °F – 104 °F)		
	Humidity: 10 % – 80 %, non-condensing		
	Storage		
	Temperature: -20 °C – 45 °C (-4 °F – 113 °F)		
	Humidity: 5 % – 95 %, non-condensing		

- Plug-and-Play
This product can be installed and used with any Plug-and-Play compatible systems. Two-way data exchange between the product and PC system optimises the product settings. Product installation takes place automatically. However, you can customise the installation settings if desired.
- Panel Dots (Pixels)
Due to the nature of the manufacturing of this product, approximately 1 pixel per million (1ppm) may be brighter or darker on the LCD panel. This does not affect product performance.
- The above specifications are subject to change without notice to improve quality.
- For detailed device specifications, visit the Samsung website.

Standard Signal Mode Table

Model Name		C27G7*T* / C32G7*T*	C49G9*T*
Synchronization (PANEL Spec)	Vertical Frequency	48 - 240 Hz	60 - 240 Hz
Resolution	Optimum resolution	2560 x 1440 @ 144 Hz (HDMI)	5120 x 1440 @ 60 Hz (HDMI)
		2560 x 1440 @ 120 Hz (DisplayPort)	5120 x 1440 @ 120 Hz (DisplayPort)
	Maximum resolution	2560 x 1440 @ 240 Hz (DisplayPort)	5120 x 1440 @ 60 Hz (HDMI)
			5120 x 1440 @ 240 Hz (DisplayPort)

If a signal that belongs to the following standard signal modes is transmitted from your PC, the screen will automatically be adjusted. If the signal transmitted from the PC does not belong to the standard signal modes, the screen may be blank even though the power LED turns on. In such a case, change the settings according to the following table by referring to the graphics card user manual.

C27G7*T* / C32G7*T*

Resolution	Horizontal Frequency (kHz)	Vertical Frequency (Hz)	Pixel Clock (MHz)	Sync Polarity (H/V)	Port	
					HDMI IN	DP IN
IBM, 720 x 400	31.469	70.087	28.322	-/+	0	0
MAC, 640 x 480	35.000	66.667	30.240	-/-	0	0
MAC, 832 x 624	49.726	74.551	57.284	-/-	0	0
MAC, 1152 x 870	68.681	75.062	100.000	-/-	0	0
VESA, 640 x 480	31.469	59.940	25.175	-/-	0	0
VESA, 640 x 480	37.861	72.809	31.500	-/-	0	0
VESA, 640 x 480	37.500	75.000	31.500	-/-	0	0
VESA, 800 x 600	35.156	56.250	36.000	+/+	0	0
VESA, 800 x 600	37.879	60.317	40.000	+/+	0	0
VESA, 800 x 600	48.077	72.188	50.000	+/+	0	0
VESA, 800 x 600	46.875	75.000	49.500	+/+	0	0
VESA, 1024 x 768	48.363	60.004	65.000	-/-	0	0
VESA, 1024 x 768	56.476	70.069	75.000	-/-	0	0
VESA, 1024 x 768	60.023	75.029	78.750	+/+	0	0
VESA, 1152 x 864	67.500	75.000	108.000	+/+	0	0
VESA, 1280 x 720	45.000	60.000	74.250	+/+	0	0
VESA, 1280 x 800	49.702	59.810	83.500	-/+	0	0

C27G7*T* / C32G7*T*

Resolution	Horizontal Frequency (kHz)	Vertical Frequency (Hz)	Pixel Clock (MHz)	Sync Polarity (H/V)	Port	
					HDMI IN	DP IN
VESA, 1280 x 1024	63.981	60.020	108.000	+/+	0	0
VESA, 1280 x 1024	79.976	75.025	135.000	+/+	0	0
VESA, 1440 x 900	55.935	59.887	106.500	-/+	0	0
VESA, 1600 x 900	60.000	60.000	108.000	+/+	0	0
VESA, 1680 x 1050	65.290	59.954	146.250	-/+	0	0
VESA, 1920 x 1080	67.500	60.000	148.500	+/+	0	0
VESA, 2560 x 1440	88.787	59.951	241.500	+/-	0	0
VESA, 2560 x 1440	150.919	99.946	140.500	+/-	0	0
VESA, 2560 x 1440	182.996	119.998	497.750	+/-	0	0
VESA, 2560 x 1440	389.000	240.000	1060.000	+/-	-	0
Unique Custom Timing, 2650 x 1440	213.265	144.000	580.080	+/-	0	-

C49G9*T*

Resolution	Horizontal Frequency (kHz)	Vertical Frequency (Hz)	Pixel Clock (MHz)	Sync Polarity (H/V)	Port	
					HDMI IN	DP IN
CEA, 1920 x 1080	112.500	100.000	297.000	+/+	0	0
CEA, 1920 x 1080	135.000	120.000	297.000	+/+	0	0
CEA, 2560 x 1080	66.000	60.000	198.000	+/+	0	0
CEA, 2560 x 1080	125.000	100.000	371.250	+/+	0	0
CEA, 2560 x 1080	150.000	120.000	495.000	+/+	0	0
IBM, 720 x 400	31.469	70.087	28.322	-/+	0	0
MAC, 640 x 480	35.000	66.667	30.240	-/-	0	0
MAC, 832 x 624	49.726	74.551	57.284	-/-	0	0
MAC, 1152 x 870	68.681	75.062	100.000	-/-	0	0
VESA, 640 x 480	31.469	59.940	25.175	-/-	0	0
VESA, 640 x 480	37.861	72.809	31.500	-/-	0	0
VESA, 640 x 480	37.500	75.000	31.500	-/-	0	0
VESA, 800 x 600	35.156	56.250	36.000	+/+	0	0
VESA, 800 x 600	37.879	60.317	40.000	+/+	0	0
VESA, 800 x 600	48.077	72.188	50.000	+/+	0	0

C49G9*T*

Resolution	Horizontal Frequency (kHz)	Vertical Frequency (Hz)	Pixel Clock (MHz)	Sync Polarity (H/V)	Port	
					HDMI IN	DP IN
VESA, 800 x 600	46.875	75.000	49.500	+/+	0	0
VESA, 1024 x 768	48.363	60.004	65.000	-/-	0	0
VESA, 1024 x 768	56.476	70.069	75.000	-/-	0	0
VESA, 1024 x 768	60.023	75.029	78.750	+/+	0	0
VESA, 1152 x 864	67.500	75.000	108.000	+/+	0	0
VESA, 1280 x 720	45.000	60.000	74.250	+/+	0	0
VESA, 1280 x 800	49.702	59.810	83.500	-/+	0	0
VESA, 1280 x 1024	63.981	60.020	108.000	+/+	0	0
VESA, 1280 x 1024	79.976	75.025	135.000	+/+	0	0
VESA, 1440 x 900	55.935	59.887	106.500	-/+	0	0
VESA, 1600 x 900	60.000	60.000	108.000	+/+	0	0
VESA, 1680 x 1050	65.290	59.954	146.250	-/+	0	0
VESA, 1920 x 1080	67.500	60.000	148.500	+/+	0	0
VESA, 2560 x 1440	88.787	59.951	241.500	+/-	0	0
VESA, 2560 x 1440	356.523	240.000	941.222	+/-	0	0
VESA, 3840 x 1080	66.625	59.968	266.500	+/-	0	0
VESA, 3840 x 1080	113.250	99.956	453.000	+/-	0	0
VESA, 3840 x 1080	137.250	119.974	549.000	+/-	0	0
VESA, 5120 x 1440	88.826	59.977	469.000	+/-	0	0
VESA, 5120 x 1440	182.955	119.970	966.000	+/-	-	0
VESA, 5120 x 1440	356.523	240.000	2018.5	+/-	-	0

Horizontal Frequency

The time required to scan a single line from the left to the right side of the screen is called a horizontal cycle. The reciprocal number of a horizontal cycle is called horizontal frequency. Horizontal frequency is measured in kHz.

Vertical Frequency

Repeating the same picture dozens of times per second allows you to view natural pictures. The repeat frequency is called "vertical frequency" or "refresh rate" and is indicated in Hz.

This product can be set to only one resolution for each screen size to obtain the optimum picture quality due to the nature of the panel. Using a resolution other than the specified resolution may degrade the picture quality. To avoid this, it is recommended that you select the optimum resolution specified for your product.

Chapter 13

Appendix

Responsibility for the Pay Service (Cost to Customers)

— When the service is requested, in spite of in warranty, we may charge you for a visit from a service technician in the following cases.

Not a product defect

Cleaning of the product, Adjustment, Explanation, Re-installation and etc.

- If a service technician is requested to give instructions on how to use product or simply adjusts options without disassembling product.
- If a defect is caused by external environmental factors (Internet, Antenna, Wired Signal, etc.)
- If a product is reinstalled or devices are connected additionally after installing the purchased product for the first time.
- If a product is reinstalled to move to a different spot or to move to a different house.
- If the customer requests instructions on how to use another company's product.
- If customer requests instructions on how to use the network or another company's programme.
- If customer requests software installation and setup for the product.
- If a service technician removes/cleans dusts or foreign materials inside of the product.
- If customer requests an installation additionally after purchasing a product through home-shopping or online.

A Product damage caused by customer's fault

Product damage caused by customer's mishandling or wrong repair

If a product damage is caused by;

- External impact or drop.
- Use of supplies or separately sold product unspecified by Samsung.
- Repair from a person besides an engineer of outsourcing service company or partner of Samsung Electronics Co., Ltd.
- Remodeling or repairing the product by customer.
- Using it with incorrect voltage or non-authorised electrical connections.
- Not following the "cautions" in User Manual.

Others

- If product fails by natural disaster. (lightning, fire, earthquake, flood damage, etc)
- If consumable components are all used up. (Battery, Toner, Fluorescent lights, Head, Vibrator, Lamp, Filter, Ribbon, etc.)

— If customer requests a service in case the product has no defect, service fee may be charged. So please read User Manual first.