



Philips  
4K Ultra HD LCD monitor

**E Line**  
27" (68.6 cm)  
4K UHD (3840 x 2160)

**276E8VJSB**



## Magnificent view in an elegant design

Philips 27" 4K UHD monitor gives ultra-clear picture quality. 4K UHD with wide-view delivers same ultimate clarity and life-like visuals from any front angle view. Flicker-free reduces eye fatigue after long use.

### **Superb Picture Quality**

- UltraClear 4K UHD (3840x2160) resolution for precision
- IPS LED wide view technology for image and color accuracy

### **Elegant Design**

- Elegant, slim design complements your home decor
- Narrow border display for a seamless appearance

### **Features designed for you**

- MultiView enables simultaneous dual connect and view
- HDMI for quick digital connection
- Less eye fatigue with Flicker-free technology
- LowBlue Mode for easy on-the-eyes productivity

### **Greener everyday**

- Eco-friendly materials meet major international standards
- Low power consumption saves energy bills

# PHILIPS

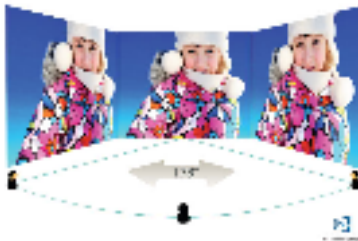
# Highlights

## UltraClear 4K UHD Resolution



These latest Philips displays utilize high performance panels to deliver UltraClear, 4K UHD (3840 x 2160) resolution images. Whether you are demanding professional requiring extremely detailed images for CAD solutions, using 3D graphics applications or a financial wizard working on huge spreadsheets, Philips displays will make your images and graphics come alive.

## IPS technology



IPS displays use an advanced technology which gives you extra wide viewing angles of 178/178 degree, making it possible to view the display from almost any angle. Unlike standard TN panels, IPS displays gives you remarkably crisp images with vivid colors, making it ideal not only for Photos, movies and web browsing, but also for professional applications which demand color accuracy and consistent brightness at all times.

## UltraNarrow Border



The new Philips displays feature ultra-narrow borders which allow for minimal distractions and maximum viewing size. Especially suited for multi-display or tiling setup like gaming, graphic design and professional applications, the ultra-narrow border display gives you the feeling of using one large display.

## MultiView technology

With the ultra-high resolution Philips MultiView display you can now experience a world of connectivity. MultiView enables active dual connect and view so that you can work with multiple devices like a PC and notebook simultaneously, for complex multi-tasking.

## HDMI ready



Enjoy crisp colorful images and audio with simple one-cable connection. An HDMI-ready device has all the required hardware to accept High-Definition Multimedia Interface (HDMI) input. An HDMI cable enables high-quality smooth digital video (up to 4K/UHD resolution at 60 Hz) and audio all transmitted over a single cable from a PC or any number of AV sources (including set-top boxes, DVD players, A/V receivers and video cameras).

## Flicker-free technology



Due to the way brightness is controlled on LED-backlit screens, some users experience flicker on their screen which causes eye fatigue. Philips Flicker-free Technology applies a new solution to regulate brightness and reduce flicker for more comfortable viewing.

## LowBlue Mode



Studies have shown that just as ultra-violet rays can cause eye damage, shortwave length blue light rays from LED displays can cause eye damage and affect vision over time. Developed for wellbeing, Philips LowBlue Mode setting uses a smart software technology to reduce harmful shortwave blue light.

## Eco-friendly materials

"Philips is committed to use sustainable, eco-friendly materials across its monitor range. All body plastic parts, metal chassis parts and packing materials use 100% recyclable materials. In some selected models we utilize upto 65% post consumer recycled plastics. Strict adherence to RoHS standards ensure substantial reduction or elimination of toxic substances like Lead, for example. Mercury content in monitors with CCFL backlight has been reduced significantly, while eliminated in monitors with LED backlight completely.



# Specifications

## Picture/Display

- LCD panel type: IPS technology
- Backlight type: W-LED system
- Panel Size: 27 inch / 68.6 cm
- Display Screen Coating: Anti-Glare, 3H, Haze 25%
- Effective viewing area: 596.74 (H) x 335.66 (V)
- Aspect ratio: 16:9
- Optimum resolution: 3840 x 2160 @ 60 Hz
- Pixel Density: 163 PPI
- Response time (typical): 5 ms (Gray to Gray)\*
- Brightness: 350 cd/m<sup>2</sup>
- Contrast ratio (typical): 1000:1
- SmartContrast: 20,000,000:1
- Pixel pitch: 0.155 x 0.155 mm
- Viewing angle: 178° (H) / 178° (V), @ C/R > 10
- Flicker-free
- Picture enhancement: SmartImage game
- Display colors: Color support 1.07 billion colors
- Color gamut (typical): NTSC 91%\*, sRGB 109%\*
- Scanning Frequency: 30 - 83 kHz (H) / 59 - 61 Hz (V)
- LowBlue Mode
- sRGB

## Connectivity

- Signal Input: DisplayPort 1.2, HDMI 2.0 x 2
- Sync Input: Separate Sync, Sync on Green
- Audio (In/Out): Audio out

## Convenience

- MultiView: PIP/PBP mode, 2x devices
- User convenience: Power On/Off, Menu, Brightness, Input, SmartImage Game
- OSD Languages: Brazil Portuguese, Czech, Dutch, English, Finnish, French, German, Greek, Hungarian, Italian, Japanese, Korean, Polish, Portuguese, Russian, Simplified Chinese, Spanish, Swedish, Traditional Chinese, Turkish, Ukrainian
- Other convenience: Kensington lock
- Plug & Play Compatibility: DDC/CI, Mac OS X, sRGB, Windows 10 / 8.1 / 8 / 7

## Stand

- Tilt: -5/20 degree

## Power

- On mode: 19.9 W (typ.) (EnergyStar 7.0 test method)
- Standby mode: < 0.5 W (typ.)
- Off mode: < 0.3 W (typ.)
- Power LED indicator: Operation - White, Standby mode- White (blinking)
- Power supply: External, 100-240VAC, 50-60Hz

## Dimensions

- Product with stand (mm): 613 x 466 x 189 mm
- Product without stand (mm): 613 x 374 x 41 mm
- Packaging in mm (WxHxD): 660 x 523 x 135 mm

## Weight

- Product with stand (kg): 4.84 kg
- Product without stand (kg): 4.23 kg
- Product with packaging (kg): 6.53 kg

## Operating conditions

- Temperature range (operation): 0 to 40 °C
- Temperature range (storage): -20 to 60 °C
- Relative humidity: 20%-80 %
- Altitude: Operation: +12,000ft (3,658m), Non-operation: +40,000ft (12,192m)
- MTBF: 50,000 hrs (excluding backlight) hour(s)

## Sustainability

- Environmental and energy: EnergyStar 7.0, EPEAT Silver, RoHS, Lead-free, Mercury Free, TCO certified, WEEE
- Recyclable packaging material: 100 %

## Compliance and standards

- Regulatory Approvals: CE Mark, FCC Class B, RCM, TUV/ISO9241-307, EPA, cETLus, CU-EAC, MEPS

## Cabinet

- Color: Black / Gunmetal
- Finish: Glossy



Issue date 2019-03-15

Version: 4.0.1

12 NC: 8670 001 56526  
EAN: 87 12581 75369 6

© 2019 Koninklijke Philips N.V.  
All Rights reserved.

Specifications are subject to change without notice.  
Trademarks are the property of Koninklijke Philips N.V.  
or their respective owners.

[www.philips.com](http://www.philips.com)

\* "IPS" word mark / trademark and related patents on technologies belong to their respective owners.

\* Response time value equal to SmartResponse

\* NTSC Area based on CIE1976

\* sRGB Area based on CIE 1931

\* The monitor may look different from feature images.