

## MX-Series LCD Monitor 22"

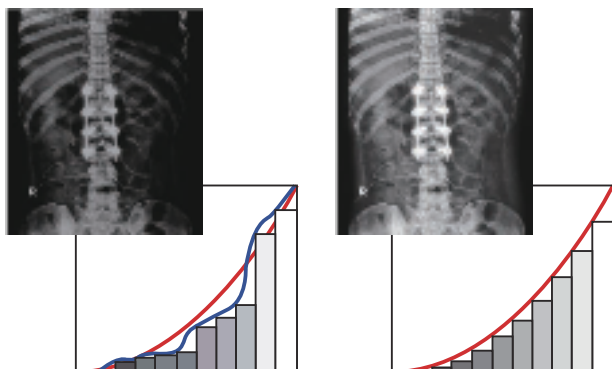


### Professional Clinical Review Displays of High Performance, Easy Maintenance



The MX-Series displays are designed for durability and easy cleaning. It features Full HD resolution, medical grade (60601-1 certified) power supply and DICOM Part 14 specification compliance, and provides excellent image quality, colour reproduction and image contrast. The MX-Series is specifically designed for 24/7 operation in demanding medical settings.





DICOM Mode

### Easy to Clean and Reliable Design

The anti-acid and anti-alkali coating treatment of the NeoV™ Optical Glass help the MX-Series withstand alcohol and other commonly used cleaning solutions. With the displays also bolstered by metal casing, this proprietary glass technology shields them from scratches and other damage.



### Versatility and Multitasking

Multiple signal source options, including HDMI and DisplayPort 1.2, offer the versatility for the MX-Series to integrate with other instruments. Its broad connectivity enables the PiP/PbP capability that makes multitasking possible—studying different images or matching medical records—in a single display.

### Medical-Grade Certified Power Supply

The MX-Series adopts a specially designed low-voltage medical-grade power supply to ensure safety, performance, and reliability in any professional medical environment. Compliance with the IEC/EN60601-1 standards ensures their safe and reliable performance in demanding medical settings.



IEC/EN 60601-1  
Medical-Grade Power Supply

## Features

- Full HD 1920 x 1080 resolution
- Anti-Burn-in™ technology prevents image ghosting
- NeoV™ Optical Glass and metal housing for excellent cleanability and protection
- Crisp 20,000,000:1 dynamic contrast ratio
- Compliance with DICOM Part 14 with calibrated greyscale and brightness
- Medical adapter certified to the IEC/EN 60601-1 medical design
- Equipotential terminal connector
- White exterior design for easy contaminant detection
- PiP/PbP functions enable multi-source viewing simultaneously
- Image Enhancer: 3D Deinterlace / Noise Reduction
- Versatile connectivity: DisplayPort, HDMI, DVI, VGA
- EcoSmart Sensor automatically adjusts brightness level according to ambient lighting conditions
- Flicker-free display technology reduces eye discomfort
- Black-level adjustment for presenting more details in dark images
- VESA mounting for flexible installation in healthcare settings

### Specifications

### MX-22

#### Panel

Panel Type	LED-Backlit TFT LCD (TN Technology)
Panel Size	21.5"
Max. Resolution	FHD 1920 x 1080
Pixel Pitch	0.248 mm
Brightness	250 cd/m <sup>2</sup> 180 cd/m <sup>2</sup> (DICOM Preset)
Contrast Ratio	20,000,000:1 (DCR)
Viewing Angle (H/V)	170°/160°
Display Colour	16.7M
Response Time	3 ms

#### Frequency

Frequency (H)	24 kHz-83 kHz
Frequency (V)	50 Hz-75 Hz

#### Signal Input

DisplayPort	x 1
HDMI	1.4 x 1
DVI	24-Pin DVI-D
VGA	15-Pin D-Sub x 1

#### Audio

Audio In	Stereo Audio Jack (3.5 mm)
Internal Speakers	2W x 2

#### Power

Power Supply	External
Power Requirements	DC 12V, 2.5A
On Mode	16W (On)
Stand-by Mode	< 0.5W
Off Mode	< 0.3W

#### Glass

Thickness	3.0 mm (0.12")
Reflection Rate	< 1%
Transmission Rate	> 97%
Hardness	> 9H

#### Operating Conditions

Temperature	0°C-40°C (32°F-104°F)
Humidity	10%-90% (non-condensing)

#### Storage Conditions

Temperature	-20°C-60°C (-4°F-140°F)
Humidity	5%-95% (non-condensing)

#### Mounting

VESA FPM PMI	Yes (100 x 100 mm & 75 x 75 mm)
--------------	---------------------------------

#### StandV

Tilt	0° to 15°
------	-----------

#### Security

Kensington Security Slot	Yes
--------------------------	-----

#### Dimensions

Product with Base (W x H x D)	513.2 x 368.5 x 155.0 mm (20.2" x 14.5" x 6.1")
Product w/o Base (W x H x D)	513.2 x 324.3 x 56.2 mm (20.2" x 12.8" x 2.2")
Packaging (W x H x D)	614.0 x 477.0 x 204.0 mm (24.2" x 18.8" x 8.0")

#### Weight

Product w/o Base	6.1 kg (13.4 lb)
Product with Base	6.7 kg (14.7 lb)
Packaging	8.8 kg (19.4 lb)

#### Regulation Approval

Certifications & Compliance	CE, LVD, RoHS, WEEE, REACH, EAC, UKCA
Power Adaptor Certifications	ADAPTER/ATM065T-P120: CE, FCC, PSE, WEEE, BSMI, Medical Grade

#### Accessories

Supplied	Power Adaptor, Power Cord, VGA Cable, Audio Cable, Quick Start Guide, Warranty Card
----------	---

#### Optional Accessories

Ceiling Mount (Landscape only)	CMP-01+WMK-03
Wall Mount (Landscape only)	WMA-01, WMK-01, WMK-03, PMK-01
Desk mount (Landscape only)	DMC-01, DMC-02D, DMS-01D, DMS-01Q, ES-02
Handle	HDL-02

All specifications are subject to change without prior notice.

Copyright © 2022 AG Neovo. All rights reserved. The name AG Neovo is a trademark of AIC.

All other trademarks are the property of their respective owners.

P/C: MX22B0 Version 1.4, 20220628



[www.agneovo.com](http://www.agneovo.com)

**Global Headquarters**

Taipei, Taiwan

**EMEA Regional Headquarters**

Capelle a/d IJssel, The Netherlands

**North & South America Regional Headquarters**

San Jose, CA, U.S.A.

**Asia-Pacific Regional Headquarters**

Taipei, Taiwan

**Canada Sales Office**

Vancouver, B.C., Canada

**China Sales Office**

Shanghai, China

**Czech Republic Sales Office**

Brno, Czech Republic

**Denmark Sales Office**

Støvring, Denmark

**Germany Sales Office**

Mechernich, Germany

**Italy Sales Office**

Livorno, Italy

**Poland Sales Office**

Warsaw, Poland

**Spain Sales Office**

Barcelona, Spain

**Ukraine Sales Office**

Lviv, Ukraine

[www.agneovo.com](http://www.agneovo.com)