

Philips  
LCD monitor with  
SoftBlue Technology

**V Line**  
21.5" (54.6 cm)

**223V5BSB2**



## Great LED images in vivid colors

Enjoy vivid LED pictures on this Philips display. Equipped with SmartControl lite, it's a great choice!

### **Vivid pictures every time**

- SoftBlue Technology easy on the eyes and maintains color
- LED technology for vivid colors
- SmartContrast for rich black details
- 16:9 Full HD display for crisp detailed images

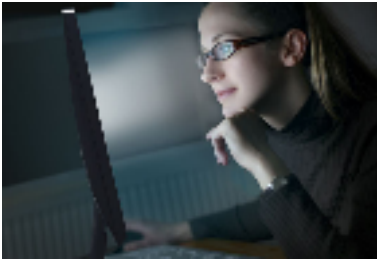
### **Great choice**

- Compact design saves space
- Mercury Free eco-friendly display
- VESA mount allows for flexibility

# PHILIPS

# Highlights

## SoftBlue Technology



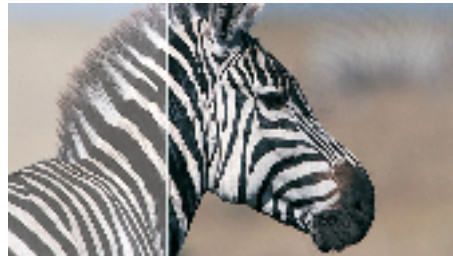
SoftBlue LED technology uses a smart technology to reduce harmful shortwave blue light without affecting the color or image of the display. SoftBlue LED technology is certified by international testing organizations TUV Rheinland to reduce harmful blue light.

## LED technology

White LED's are solid state devices which light up to full, consistent brightness faster saving startup time. LED's are free from mercury content which allows for eco-friendly recycling and disposal process. LED's allow for better dimming control of LCD backlight, resulting in

super high contrast ratio. It also gives superior color reproduction thanks to consistent brightness across the screen.

## SmartContrast



SmartContrast is a Philips technology that analyzes the contents you are displaying, automatically adjusting colors and controlling backlight intensity to dynamically enhance contrast for the best digital images and videos or when playing games where dark hues are displayed. When Economy mode is selected, contrast is adjusted and backlighting fine-tuned for just-right display of everyday office applications and lower power consumption.

## Mercury Free

Philips monitors with LED backlighting are free of Mercury content, one of the most toxic natural substances, which affects humans and animals. This reduces the environmental impact of the display throughout its life-cycle, from manufacturing to disposal.

## 16:9 Full HD display



Picture quality matters. Regular displays deliver quality, but you expect more. This display features enhanced Full HD 1920 x 1080 resolution. With Full HD for crisp detail paired with high brightness, incredible contrast and realistic colors expect a true to life picture.



# Specifications

## Picture/Display

- LCD panel type: TFT-LCD
- Backlight type: W-LED system
- Panel Size: 21.5 inch / 54.6 cm
- Effective viewing area: 476.64 (H) x 268.11 (V)
- Aspect ratio: 16:9
- Optimum resolution: 1920 x 1080 @ 60 Hz
- Response time (typical): 5 ms
- Brightness: 200 cd/m<sup>2</sup>
- SmartContrast: 10,000,000:1
- Contrast ratio (typical): 600:1
- Pixel pitch: 0.248x 0.248 mm
- Viewing angle: 90° (H) / 65° (V), @ C/R > 10
- Display colors: 16.7 M
- Scanning Frequency: 30 -83 kHz (H) / 56 -76 Hz (V)
- sRGB
- SoftBlue

## Connectivity

- Signal Input: VGA (Analog)
- Sync Input: Separate Sync, Sync on Green

## Convenience

- User convenience: Power On/Off, Menu/OK, Brightness/Back, 4:3 Wide/Up, Auto/Down
- OSD Languages: Brazil Portuguese, Czech, Dutch, English, Finnish, French, German, Greek, Hungarian, Italian, Japanese, Korean, Polish, Portuguese, Russian, Simplified Chinese, Spanish, Swedish, Traditional Chinese, Turkish, Ukrainian
- Other convenience: Kensington lock, VESA mount (100x100mm)
- Plug & Play Compatibility: DDC/CI, Mac OS X, sRGB, Windows 7, Windows 8

## Stand

- Tilt: -5/20 degree

## Power

- On mode: 16.46 W (typ.) (EnergyStar 6.0 test method)
- Standby mode: 0.5 W (typ.)
- Off mode: 0.5 W (typ.)
- Power LED indicator: Operation - White, Standby mode- White (blinking)
- Power supply: Built-in, 100-240VAC, 50-60Hz

## Dimensions

- Product with stand (mm): 503 x 376 x 213 mm
- Product without stand (mm): 503 x 316 x 50 mm
- Packaging in mm (WxHxD): 555 x 422 x 113 mm

## Weight

- Product with stand (kg): 2.61 kg
- Product without stand (kg): 2.35 kg
- Product with packaging (kg): 3.83 kg

## Operating conditions

- Temperature range (operation): 0°C to 40°C °C
- Temperature range (storage): -20°C to 60°C °C
- Relative humidity: 20%-80 %
- Altitude: Operation: +12,000ft (3,658m), Non-operation: +40,000ft (12,192m)
- MTBF: 30,000 hour(s)

## Sustainability

- Environmental and energy: EnergyStar 6.0, EPEAT Silver, RoHS, Lead-free, Mercury Free
- Recyclable packaging material: 100 %

## Compliance and standards

- Regulatory Approvals: CE Mark, FCC Class B, CCC, CECP

## Cabinet

- Color: Black
- Finish: Hairline (front bezel) / Texture (rear cover)



Issue date 2017-11-15

Version: 1.0.1

12 NC: 8670 001 26973  
EAN: 69 51613 90838 9

© 2017 Koninklijke Philips N.V.  
All Rights reserved.

Specifications are subject to change without notice.  
Trademarks are the property of Koninklijke Philips N.V.  
or their respective owners.

[www.philips.com](http://www.philips.com)