



Philips
LCD monitor with LED
backlight

V Line
22" (55.9 cm)

220V4LSB

Enjoy great LED pictures in vivid colors

Enjoy vivid LED pictures with this attractive, glossy design display. Equipped with SmartControl lite, it's a great choice!

Vivid pictures every time

- LED technology for vivid colors
- SmartContrast for rich black details
- Bigger viewing area with 16:10 format
- Easy display performance tuning with SmartControl Lite

Modern design

- Attractive glossy design
- Small footprint saves space
- VESA mount allows for flexibility

Greener everyday

- Mercury Free eco-friendly display
- Energy Star for energy efficiency and low power consumption
- Low power consumption saves energy bills

PHILIPS

Specifications

Picture/Display

- LCD panel type: TFT-LCD
- Backlight type: W-LED system
- Panel Size: 22 inch / 55.9 cm
- Effective viewing area: 473.76 (H) x 296.1 (V)
- Display Screen Coating: Anti-Glare, 3H, Haze 25%
- Aspect ratio: 16:10
- Optimum resolution: 1680 x 1050 @ 60 Hz
- Response time (typical): 5 ms
- Brightness: 250 cd/m²
- SmartContrast: 10,000,000:1
- Contrast ratio (typical): 1000:1
- Pixel pitch: 0.282x 0.282 mm
- Viewing angle: 170° (H) / 160° (V), @ C/R > 10
- Display colors: 16.7 M
- Scanning Frequency: 30 - 83 kHz (H) / 56 - 75 Hz (V)
- sRGB

Connectivity

- Signal Input: VGA (Analog), DVI-D (digital, HDCP)
- Sync Input: Separate Sync, Sync on Green

Convenience

- User convenience: Auto/Down, 4:3 Wide/Up, Brightness/Back, Menu/OK, Power On/Off
- OSD Languages: English, French, German, Italian, Portuguese, Russian, Simplified Chinese, Spanish, Turkish
- Other convenience: Kensington lock, VESA mount (100x100mm)
- Plug & Play Compatibility: DDC/CI, Mac OS X, sRGB, Windows 7, Windows XP

Stand

- Tilt: -5/20 degree

Power

- On mode: 16.52 W (EnergyStar 5.0 test method)
- Standby mode: 0.5 W
- Off mode: 0.5 W

- Power LED indicator: Operation - White, Standby mode- White (blinking)
- Power supply: Built-in, 100-240VAC, 50-60Hz

Dimensions

- Product with stand (mm): 512 x 416 x 213 mm
- Product without stand (mm): 512 x 348 x 48 mm
- Packaging in mm (WxHxD): 567 x 421 x 124 mm

Weight

- Product with stand (kg): 3.66 kg
- Product without stand (kg): 3.32 kg
- Product with packaging (kg): 4.83 kg

Operating conditions

- Temperature range (operation): 0°C to 40°C °C
- Temperature range (storage): -20°C to 60°C °C
- Relative humidity: 20%-80 %
- Altitude: Operation: +12,000ft (3,658m), Non-operation: +40,000ft (12,192m)
- MTBF: 30,000 hour(s)

Sustainability

- Environmental and energy: EnergyStar 5.0, RoHS, Lead-free, Mercury Free
- Recyclable packaging material: 100 %

Compliance and standards

- Regulatory Approvals: BSMI, CE Mark, FCC Class B, GOST, PSB, SASO, SEMKO, TCO Certified, TUV/ISO9241-307, UL/cUL, WEEE

Cabinet

- Color: Black
- Finish: Glossy (front bezel) /Texture (rear cover)

What's in the box?

- Monitor with stand
- Cables: VGA, Power
- User Documentation

Highlights

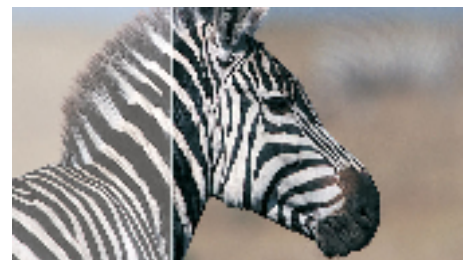
LED technology

White LED's are solid state devices which light up to full, consistent brightness faster saving startup time. LED's are free from mercury content which allows for eco-friendly recycling and disposal process. LED's allow for better dimming control of LCD backlight, resulting in super high contrast ratio. It also gives superior color reproduction thanks to consistent brightness across the screen.

SmartControl Lite

SmartControl Lite is the next generation 3D icon based GUI monitor control software. This allows user to fine-tune most parameters of the monitor like Color, Brightness, screen calibration, Multimedia, ID management, etc with the mouse.

SmartContrast



SmartContrast is a Philips technology that analyzes the contents you are displaying, automatically adjusting colors and controlling backlight intensity to dynamically enhance contrast for the best digital images and videos or when playing games where dark hues are displayed. When Economy mode is selected, contrast is adjusted and backlighting fine-tuned for just-right display of everyday office applications and lower power consumption.

Mercury Free

Philips monitors with LED backlighting are free of Mercury content, one of the most toxic natural substances, which affects humans and animals. This reduces the environmental impact of the display throughout its life-cycle, from manufacturing to disposal.

Energy Star 5.0

Energy Star is a US EPA sponsored energy efficiency program also adopted by many other countries. Energy Star certification ensures that you are buying a product which meets the latest power efficiency standards which operates with maximum power efficiency at all operational levels. New Philips monitors are certified for Energy Star 5.0 specifications and meet or exceed the standard. For example, in sleep mode Energy Star 5.0 requires less than 1 watt power consumption, whereas Philips monitors consume less than 0.5 watts. Further details can be obtained from www.energystar.gov



Issue date 2019-11-29

Version: 6.0.1

12 NC: 8670 000 93602
EAN: 87 12581 65581 5

© 2019 Koninklijke Philips N.V.
All Rights reserved.

Specifications are subject to change without notice.
Trademarks are the property of Koninklijke Philips N.V.
or their respective owners.

www.philips.com