



## 21.5" 10 point touch monitor with edge-to-edge glass, IPS panel and AG coating

With its Full HD (1920x1080) resolution and accurate Projective Capacitive 10 point touch technology, the ProLite T2236MSC-B3AG delivers seamless and accurate touch response. The IPS panel technology guarantees high performance with excellent colour reproduction and high contrast, making it an excellent choice for a vast array of demanding interactive applications. The Anti Glare coating helps to avoid issues with reflections and external light sources affecting colour reproduction, contrast and sharpness. The flexible stand can be positioned at several angles creating a comfortable and ergonomic user experience.



IPS

IPS displays are best known for wide viewing angles and natural, highly accurate colours. They are especially suited for colour-critical applications.



Touch technology - Capacitive

This technology uses a sensor-grid of micro-fine wires integrated into the glass that covers the screen. Touch is detected because electrical characteristics of the sensor grid change when human finger is placed on the glass. Thanks to the glass overlay this technology is highly durable, and the touch function remains unaffected even if the glass is scratched. It offers perfect picture performance and will work with human finger (also latex gloved) and stylus-pen.

## 01 DISPLAY CHARACTERISTICS

Design	Edge to edge glass
Diagonal	21.5", 54.7cm
Panel	IPS, AG coated glass
Native resolution	1920 x 1080 (2.1 megapixel Full HD)
Aspect ratio	16:9
Panel brightness	250 cd/m <sup>2</sup>
Brightness	215 cd/m <sup>2</sup> with touch
Light transmittance	85%
Static contrast	1000:1
Advanced contrast	80M:1
Response time (GTG)	5ms
Viewing zone	horizontal/vertical: 178°/178°, right/left: 89°/89°, up/down: 89°/89°
Colour support	16.7mln
Horizontal Sync	30 - 80kHz
Viewable area W x H	476.1 x 267.8mm, 18.7 x 10.5"
Pixel pitch	0.248mm
Bezel colour and finish	black, matte

## 02 TOUCH

Touch technology	projective capacitive
Touch points	10 (HID, only with supported OS)
Touch method	stylus, finger, glove (latex)
Touch interface	USB
Supported operating systems	All iiyama monitors are Plug & Play and compatible with Windows and Linux. For details regarding the supported OS for the touch models, please refer to the driver instruction file available in the downloads section.
Palm rejection	yes

## 03 INTERFACES / CONNECTORS / CONTROLS

Analog signal input	VGA x1
Digital signal input	HDMI x1 DisplayPort x1
Audio output	Speakers 2 x 2W
USB HUB	x4 (v.3.2 (Gen 1, 5Gbit))

## 04 FEATURES

OSD key lock	yes
--------------	-----

## 05 GENERAL

OSD languages	EN, DE, FR, ES, IT, PT, CN, RU, JP
Control buttons	Scroll up / Audio Adjust / Mute, Scroll down / ECO / Blue Light Reducer, Signal Select / Exit, Menu, Power

#### User controls

picture adjust (contrast, brightness, i-Style-Color, adv. contrast, Eco mode, Overdrive, X-Res Technology), image settings (auto adjust, pixel clock, phase, horizontal pos., vertical pos., sharp & soft, aspect), color settings (gamma, 6-axis, color temp.), OSD (horizontal pos., vertical pos., OSD Time), language, extra (reset, DDC/CI, signal select, audio source, HDMI, range, opening logo, LED, Info, volume, mute)

#### Convenience

Kensington-lock™ prepared

#### Blue light reducer

yes

#### Plug&Play

DDC2B

### 06 MECHANICAL

#### Tilt angle

90° up; 5° down

#### VESA mounting

100 x 100mm

### 07 ACCESSORIES INCLUDED

#### Cables

power, USB, HDMI

#### Guides

quick start guide, safety guide

### 08 POWER MANAGEMENT

#### Power supply unit

internal

#### Power supply

AC 100 - 240V, 50/60Hz

#### Power usage

14W typical, 0.5W stand by, 0.3W off mode

### 09 SUSTAINABILITY

#### Regulations

CE, TÜV-Bauart, EAC, RoHS support, ErP, WEEE, cULus, REACH, UKCA

#### Energy efficiency class (Regulation (EU) 2017/1369)

E

#### REACH SVHC

above 0.1%: Lead

### 10 DIMENSIONS / WEIGHT

#### Product dimensions W x H x D

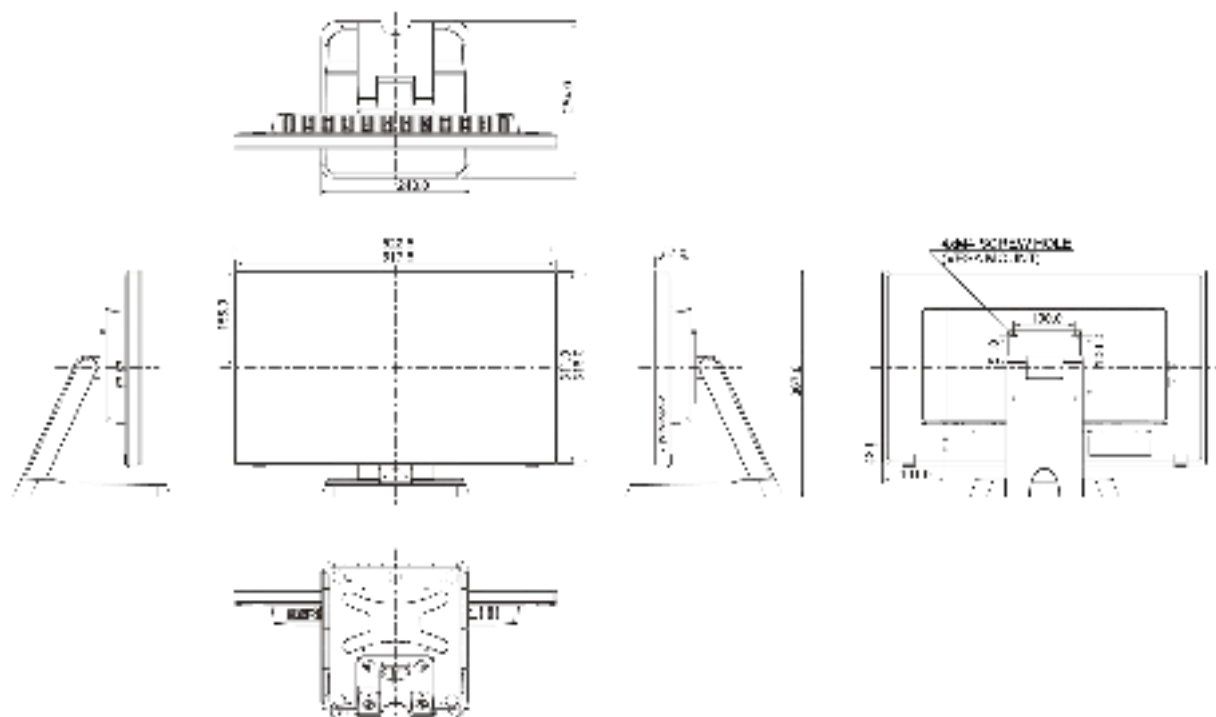
522.5 x 367 x 254mm

#### Weight (without box)

5.8kg

#### EAN code

4948570120345



All trademarks and registered trademarks acknowledged. E & O E. Specification subject to change without notice. All LCD's comply with ISO-9241-307:2008 in connection with pixel defects.

© IIYAMA CORPORATION. ALL RIGHTS RESERVED