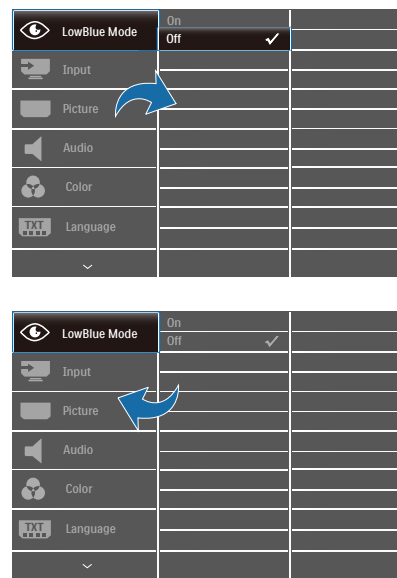
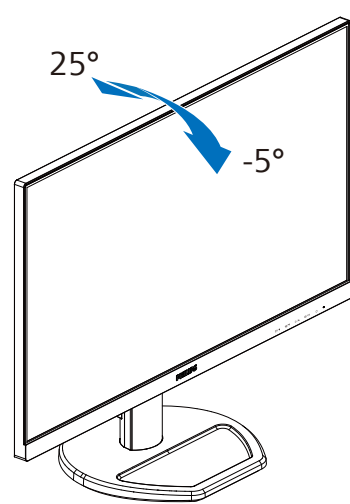


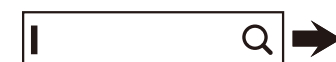
OK



4



Register your product and get support at  
[www.philips.com/support](http://www.philips.com/support)



FAQ

Software  
SmartControlUser  
Manual

Version: M92425JQ1T  
 2022 © TOP Victory Investments Ltd. All rights reserved.

This product has been manufactured by and is sold under the responsibility of Top Victory Investments Ltd., and Top Victory Investments Ltd. is the warrantor in relation to this product. Philips and the Philips Shield Emblem are registered trademarks of Koninklijke Philips N.V. and are used under license.

Specifications are subject to change without notice.

**HDMI**

The Adopted Trademarks HDMI, HDMI High Definition Multimedia Interface, and the HDMI Logo are trademarks or registered trademarks of HDMI Licensing Administrator, Inc. in the United States and other countries.

[www.philips.com](http://www.philips.com)

Energy Labelling



242S9AL



242S9JAL



Printed in China



H41G785381365A

PHILIPS

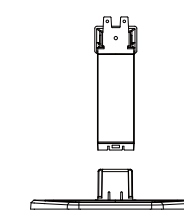
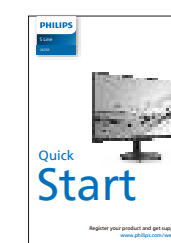
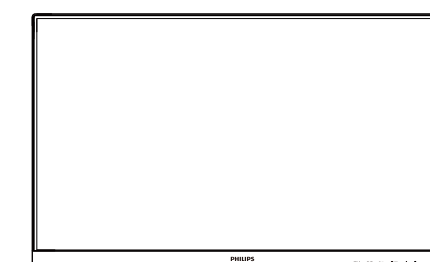
S Line

242S9



# Quick Start

Register your product and get support at  
[www.philips.com/welcome](http://www.philips.com/welcome)



Screw and screwdriver  
M4-10 x 3



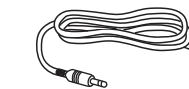
Power



\*HDMI



\*VGA



\*Audio



\*DVI  
(242S9AL)



\*DP  
(242S9JAL)



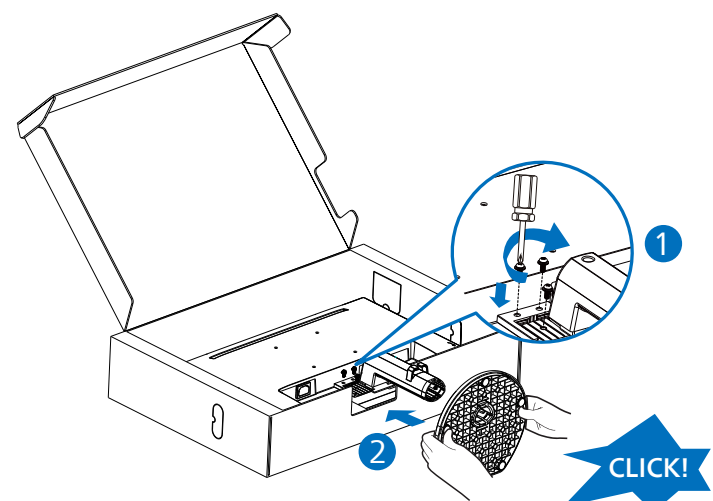
\*USB A-B  
(242S9JAL)

\*Different according to region

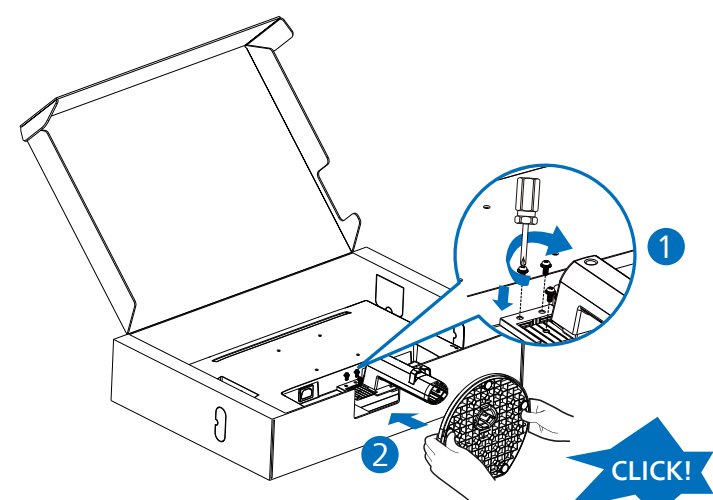
Display design may differ from that illustrated

1

242S9AL

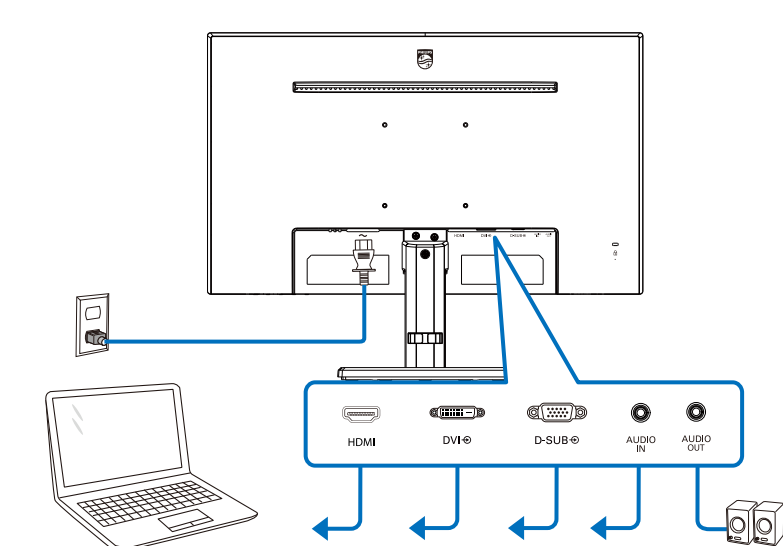


242S9JAL

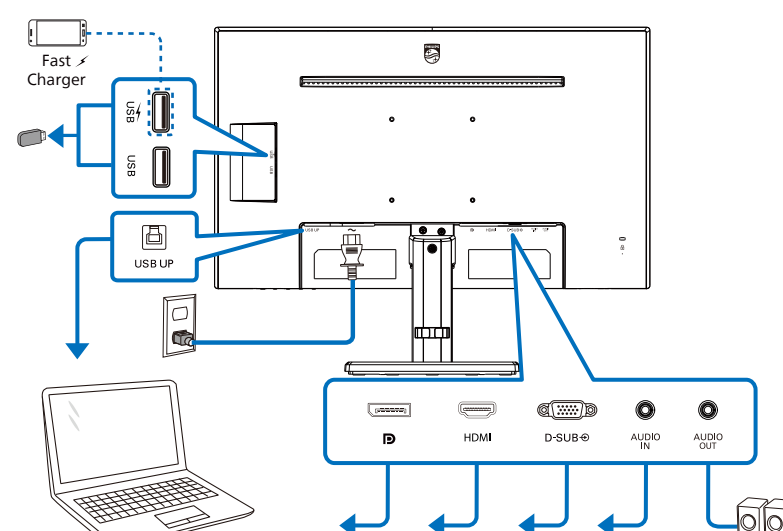


2

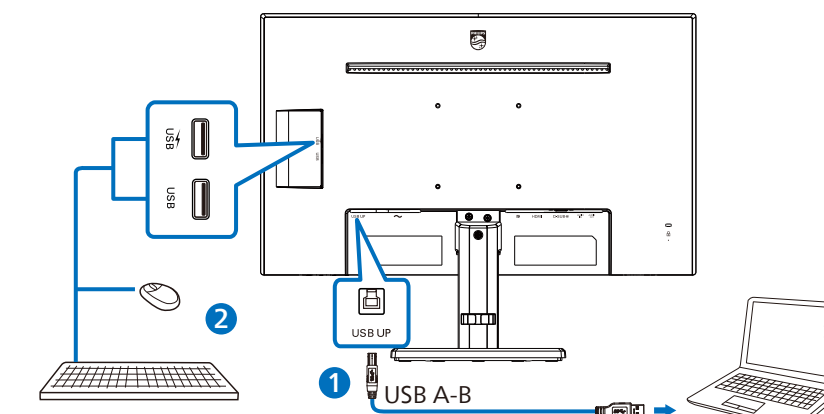
242S9AL



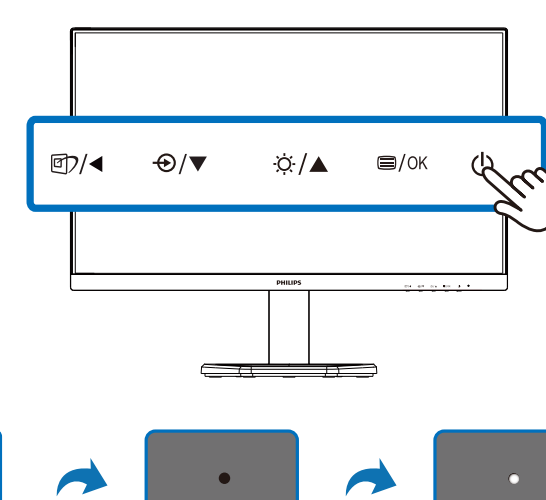
242S9JAL



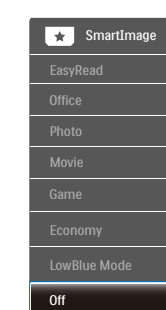
USB hub



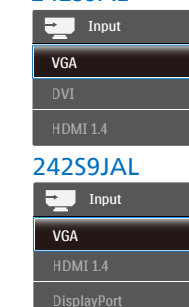
3



Brightness - + 80



242S9AL



242S9JAL

