

| SUB SOURCE POSSIBILITY (x1) | | HDMI | DisplayPort | USBC1 |
|-----------------------------|-------------|------|-------------|-------|
| MAIN SOURCE (x1) | MultiView | ● | ● | ● |
| | HDMI | ● | ● | ● |
| | DisplayPort | ● | ● | ● |



Register your product and get support at www.philips.com/support

1



FAQ



Software SmartControl



User Manual

Version: M1124BU5301Q1WWT
2022 © TOP Victory Investments Ltd. All rights reserved.

This product has been manufactured by and is sold under the responsibility of Top Victory Investments Ltd., and Top Victory Investments Ltd. is the warrantor in relation to this product. Philips and the Philips Shield Emblem are registered trademarks of Koninklijke Philips N.V. and are used under license.

Specifications are subject to change without notice.

HDMI

The Adopted Trademarks HDMI, HDMI High Definition Multimedia Interface, and the HDMI Logo are trademarks or registered trademarks of HDMI Licensing Administrator, Inc. in the United States and other countries.

www.philips.com

Energy Labelling
24B1U5301H



Printed in China



H41G785381358A

PHILIPS

Business Monitor

5000 Series

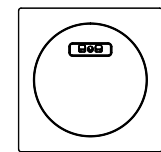
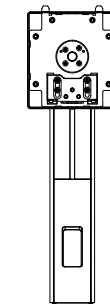
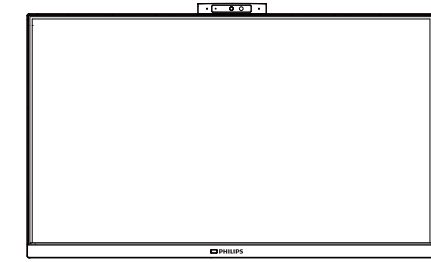


24B1U5301H

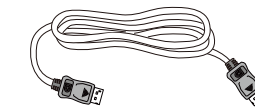
Quick start

Register your product and get support at www.philips.com/welcome

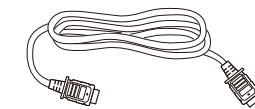
Contents



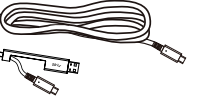
Power



* DP



* HDMI



*USB C-C/A



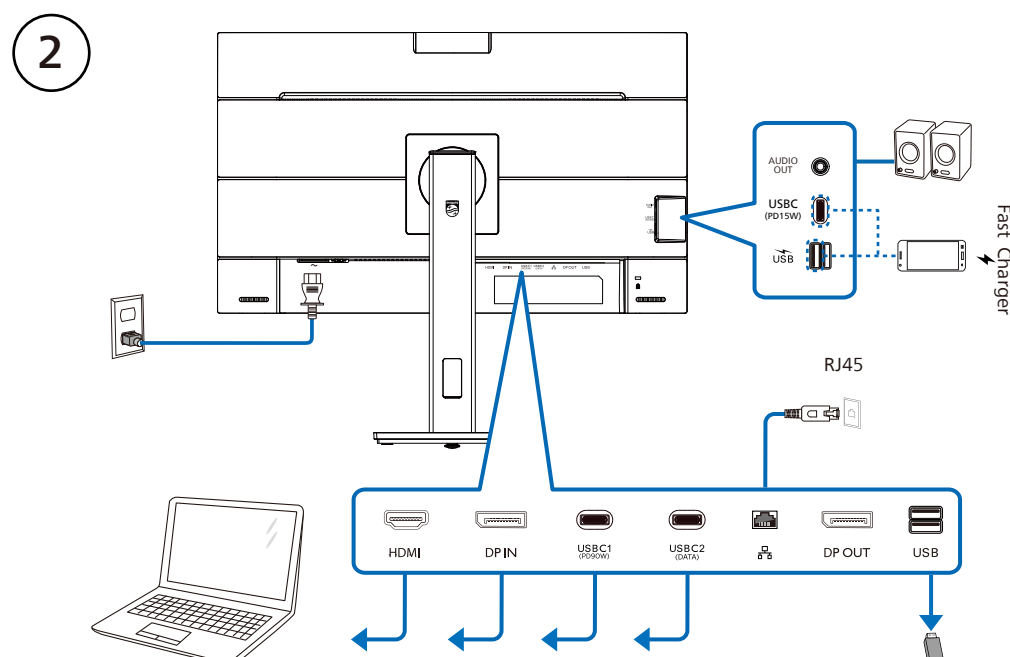
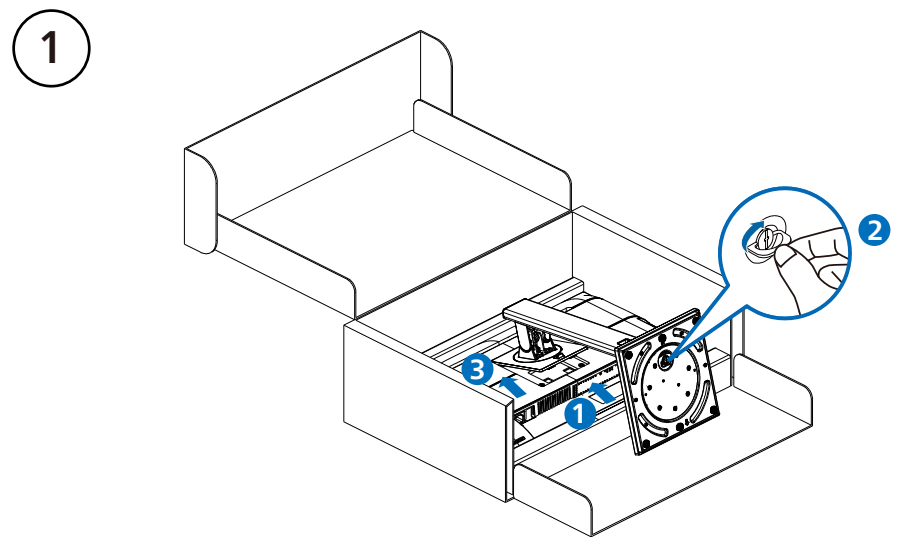
*USB C-C



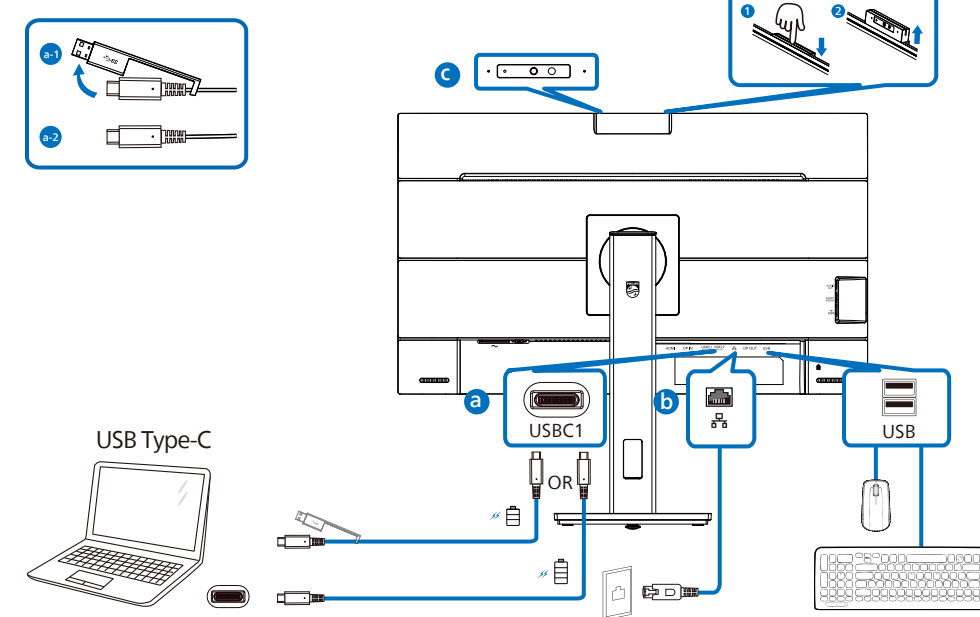
*USB C-A

*Different according to region

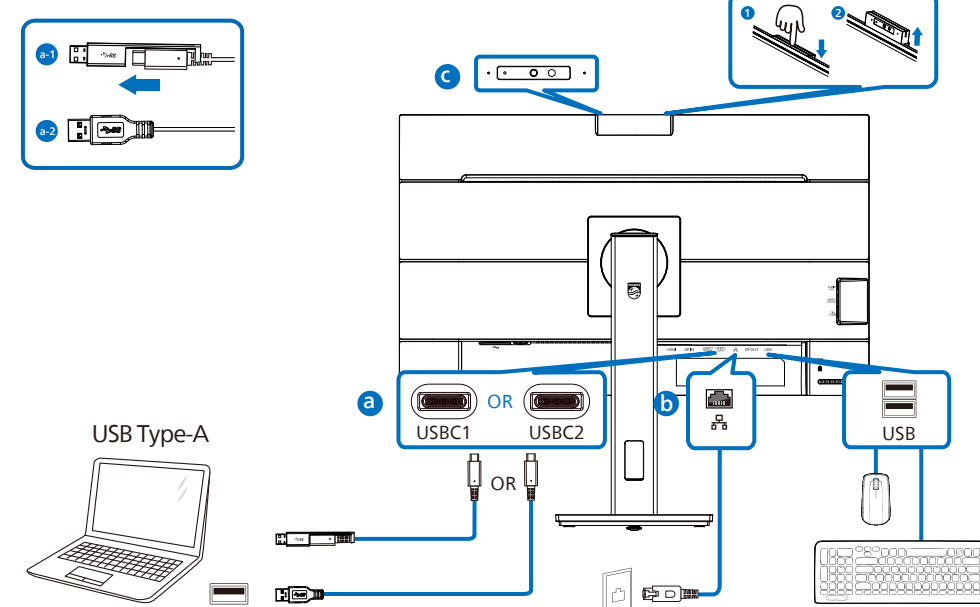
Display design may differ from that illustrated



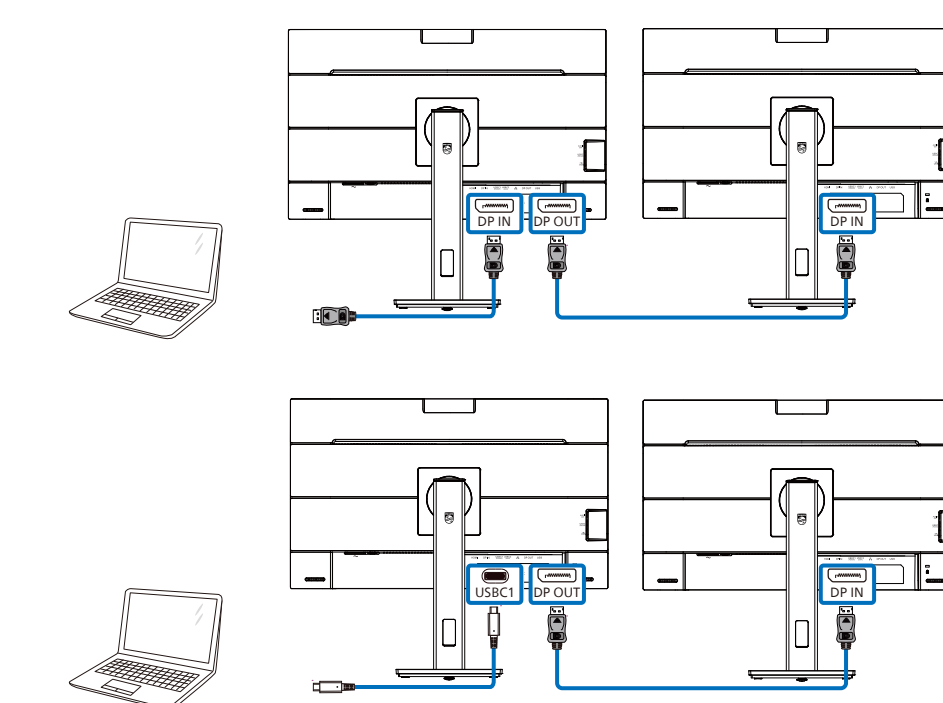
USB docking (USB C-C)



USB hub (USB A-C)



Multi-stream transport



KVM

