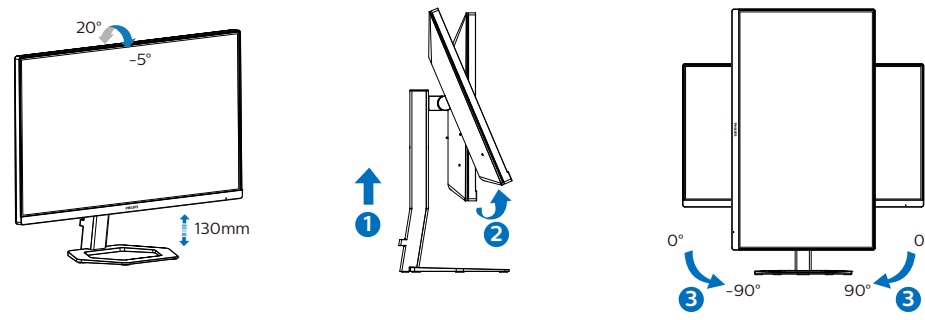
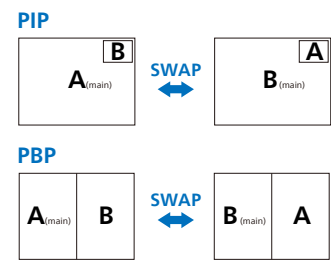


4



5



27E1N5800E (1x main, 1x sub)

| MultiView | SUB SOURCE POSSIBILITY (x1) | |
|------------------|-----------------------------|---|
| | Inputs | |
| MAIN SOURCE (x1) | 1 HDMI 2.0 | • |
| | 2 HDMI 2.0 | • |
| | DisplayPort | • |

27E1N5900E (1x main, 1x sub)

| MultiView | SUB SOURCE POSSIBILITY (x1) | |
|------------------|-----------------------------|---|
| | Inputs | |
| MAIN SOURCE (x1) | HDMI 2.0 | • |
| | DisplayPort | • |
| | USB C | • |



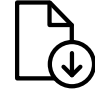
Register your product and get support at www.philips.com/support



FAQ



Software SmartControl



User Manual

Version: 27E1N5800Q1T

2021 © TOP Victory Investments Ltd. All rights reserved.

This product has been manufactured by and is sold under the responsibility of Top Victory Investments Ltd., and Top Victory Investments Ltd. is the warrantor in relation to this product. Philips and the Philips Shield Emblem are registered trademarks of Koninklijke Philips N.V. and are used under license.

Specifications are subject to change without notice.

HDMI

The terms HDMI, HDMI High-Definition Multimedia Interface, and the HDMI Logo are trademarks or registered trademarks of HDMI Licensing Administrator, Inc.

www.philips.com

Printed in China



H41G78S381322D

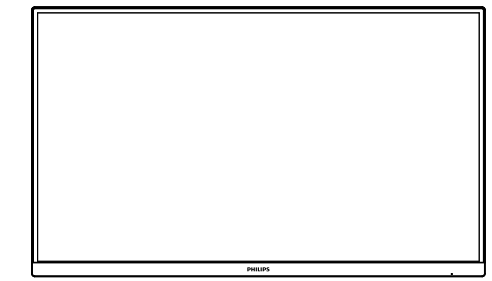
PHILIPS
Monitor
5000 Series

27E1N5800E
27E1N5900E

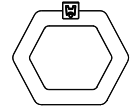
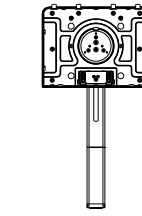
Quick start

Register your product and get support at www.philips.com/welcome

Contents



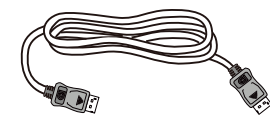
Quick start



Power



*HDMI



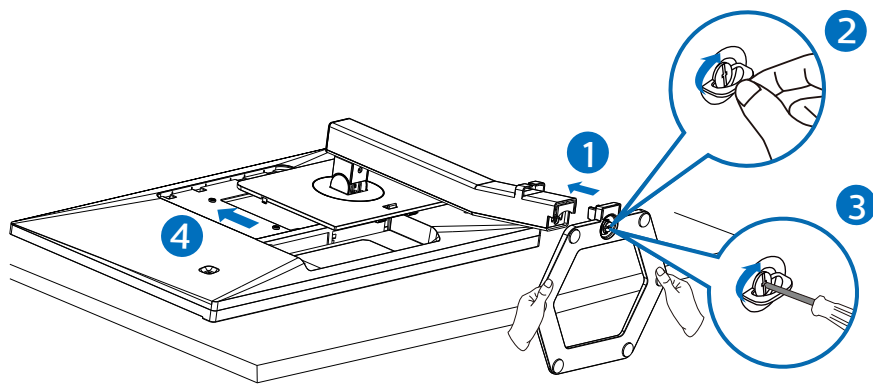
*DP

*USB C-C
(27E1N5900E)

*Different according to region

Display design may differ from that illustrated

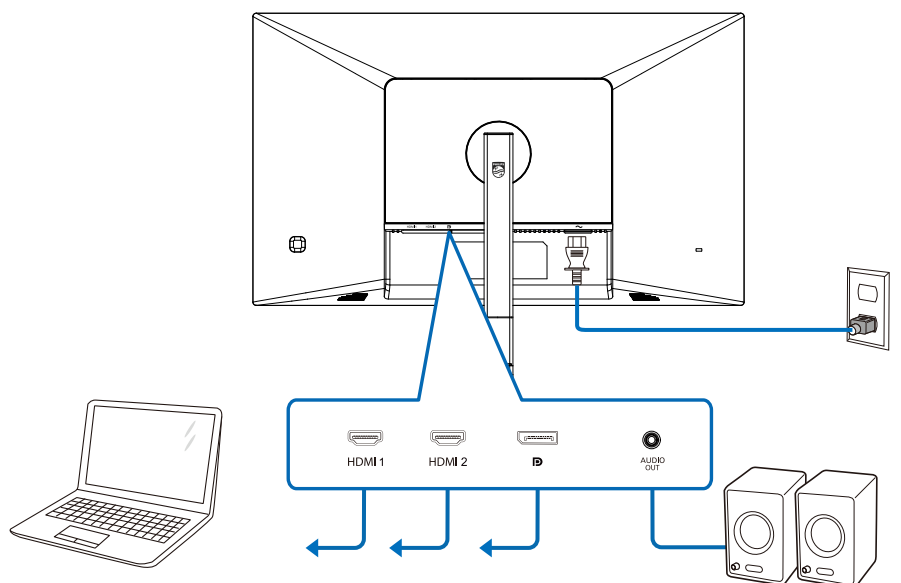
1



⚠ **CAUTION:** Place the monitor face down on a smooth surface. Pay attention not to scratch or damage the screen.

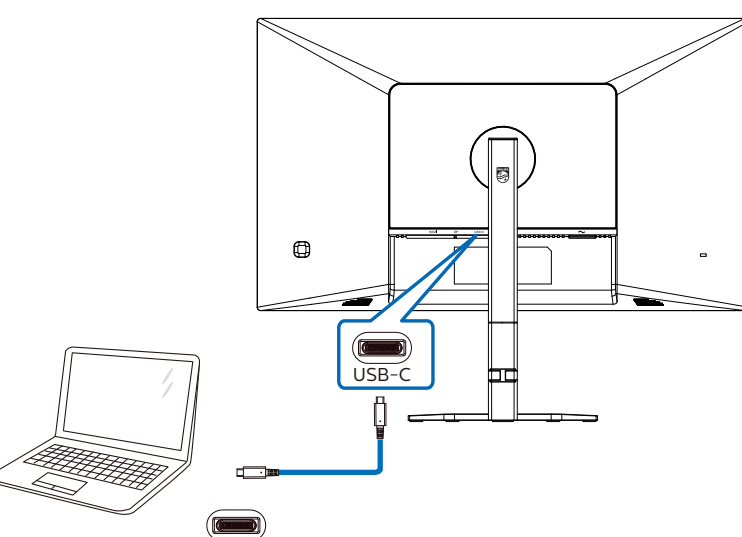
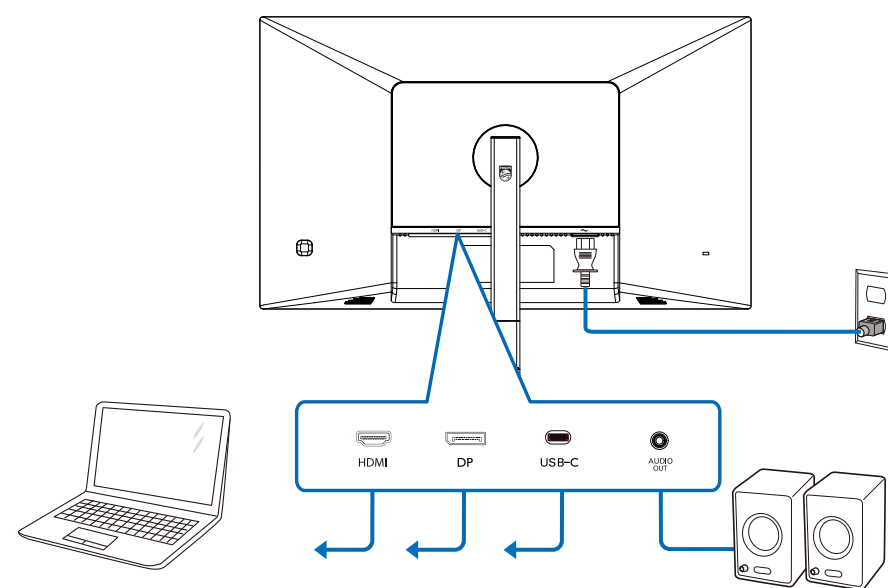
2

27E1N5800E

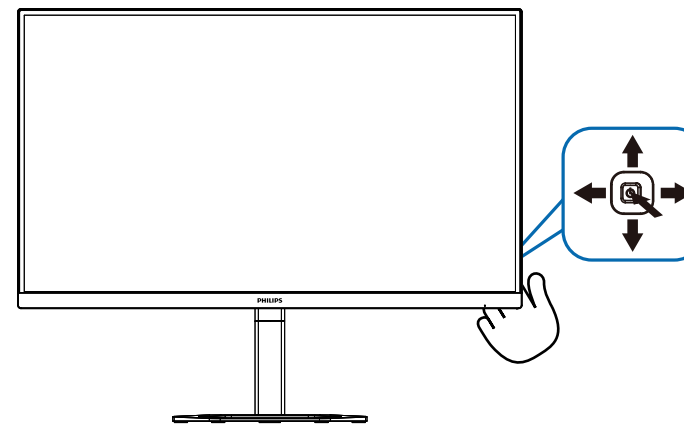


2

27E1N5900E



3



27E1N5800E

| Input |
|-------------|
| 1 HDMI 2.0 |
| 2 HDMI 2.0 |
| DisplayPort |

27E1N5900E

| Input |
|-------------|
| HDMI 2.0 |
| DisplayPort |
| USB C |



| SmartImage™ |
|-----------------|
| FPS |
| Racing |
| RTS |
| Gamer 1 |
| Gamer 2 |
| LowBlue Mode |
| EasyRead |
| SmartUniformity |
| Off |



27E1N5800E

| Game Setting | SmartResponse | SmartFrame | Off |
|--------------|---------------|------------|-----|
| LowBlue Mode | Off | Off | Off |
| Input | | | |
| Picture | | | |
| PIP/PPB | | | |
| SmartSize | | | |

27E1N5900E

| Game Setting | SmartResponse | Adaptive Sync | Low Input Lag | SmartResponse | SmartFrame | Off |
|--------------|---------------|---------------|---------------|---------------|------------|-----|
| LowBlue Mode | Off | On | On | Off | Off | Off |
| Input | | | | | | |
| Picture | | | | | | |
| PIP/PPB | | | | | | |
| SmartSize | | | | | | |



27E1N5800E

| Game Setting | SmartResponse | SmartFrame | Off |
|--------------|---------------|------------|-----|
| LowBlue Mode | Off | Off | Off |
| Input | | | |
| Picture | | | |
| PIP/PPB | | | |
| SmartSize | | | |



27E1N5800E

| Game Setting | SmartResponse | SmartFrame | Off |
|--------------|---------------|------------|-----|
| LowBlue Mode | Off | Off | Off |
| Input | | | |
| Picture | | | |
| PIP/PPB | | | |
| SmartSize | | | |



27E1N5800E

| Game Setting | SmartResponse | SmartFrame | Off |
|--------------|---------------|------------|-----|
| LowBlue Mode | Off | Off | Off |
| Input | | | |
| Picture | | | |
| PIP/PPB | | | |
| SmartSize | | | |

27E1N5900E

| Game Setting | SmartResponse | SmartFrame | Off |
|--------------|---------------|------------|-----|
| LowBlue Mode | Off | Off | Off |
| Input | | | |
| Picture | | | |
| PIP/PPB | | | |
| SmartSize | | | |

27E1N5900E

| Game Setting | SmartResponse | Adaptive Sync | Low Input Lag | SmartResponse | SmartFrame | Off |
|--------------|---------------|---------------|---------------|---------------|------------|-----|
| LowBlue Mode | Off | On | On | Off | Off | Off |
| Input | | | | | | |
| Picture | | | | | | |
| PIP/PPB | | | | | | |
| SmartSize | | | | | | |

27E1N5900E

| Game Setting | SmartResponse | Adaptive Sync | Low Input Lag | SmartResponse | SmartFrame | Off |
|--------------|---------------|---------------|---------------|---------------|------------|-----|
| LowBlue Mode | Off | On | On | Off | Off | Off |
| Input | | | | | | |
| Picture | | | | | | |
| PIP/PPB | | | | | | |
| SmartSize | | | | | | |