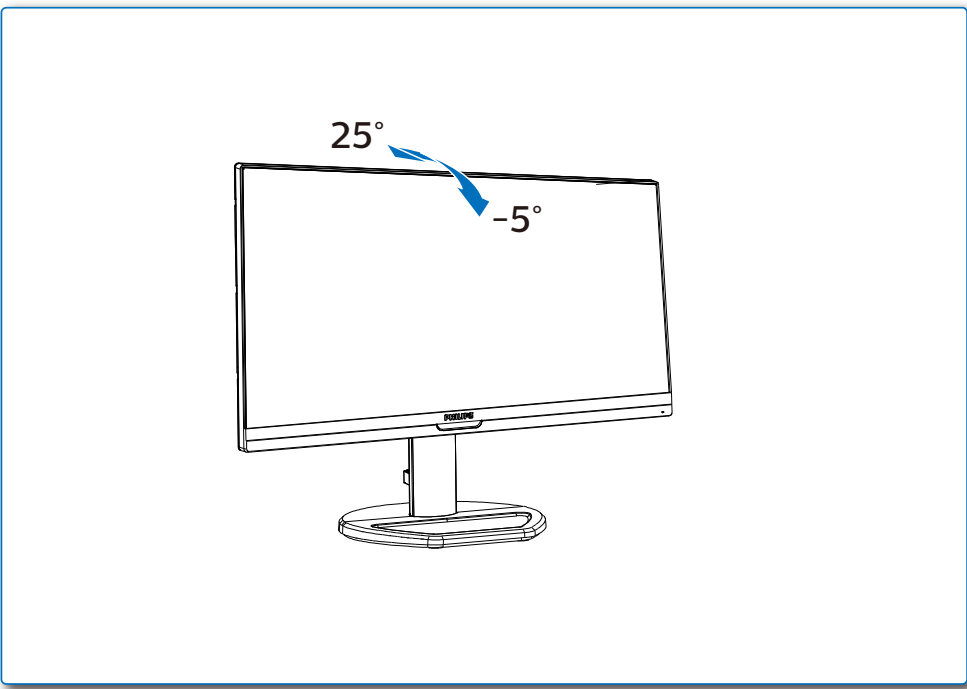
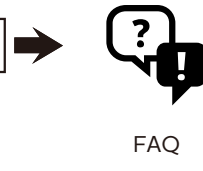
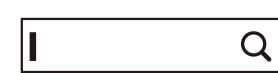


4



Register your product and get support at  
[www.philips.com/support](http://www.philips.com/support)



Version: M9223SQ1L  
2023 © TOP Victory Investments Ltd. All rights reserved.

This product has been manufactured by and is sold under the responsibility of Top Victory Investments Ltd., and Top Victory Investments Ltd. is the warrantor in relation to this product. Philips and the Philips Shield Emblem are registered trademarks of Koninklijke Philips N.V. and are used under license.

Specifications are subject to change without notice.

**HDMI®**

The terms HDMI, HDMI High-Definition Multimedia Interface, HDMI Trade Dress and the HDMI Logos are trademarks or registered trademarks of HDMI Licensing Administrator, Inc.

[www.philips.com](http://www.philips.com)



Printed in China



F41G22M1813XXA----

**PHILIPS**

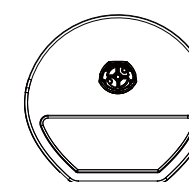
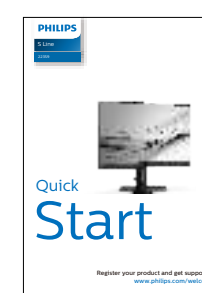
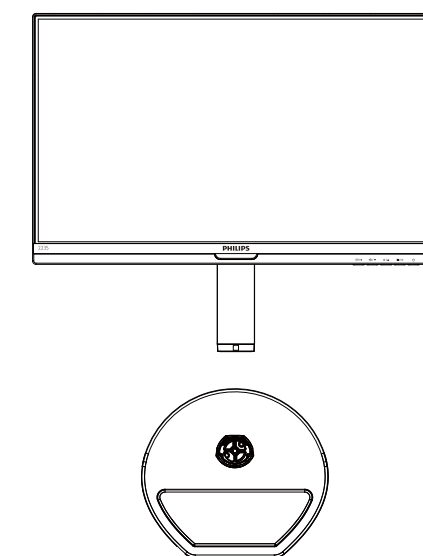
S Line

22359



# Quick Start

Register your product and get support at  
[www.philips.com/welcome](http://www.philips.com/welcome)



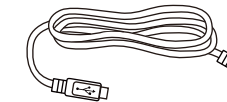
Power



\* HDMI



\* DP

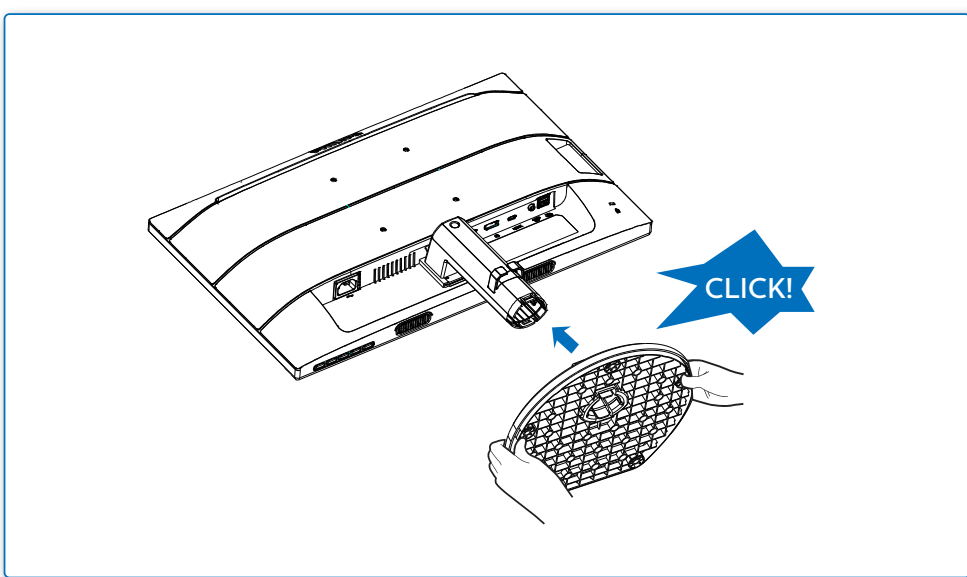


\*USB C-C

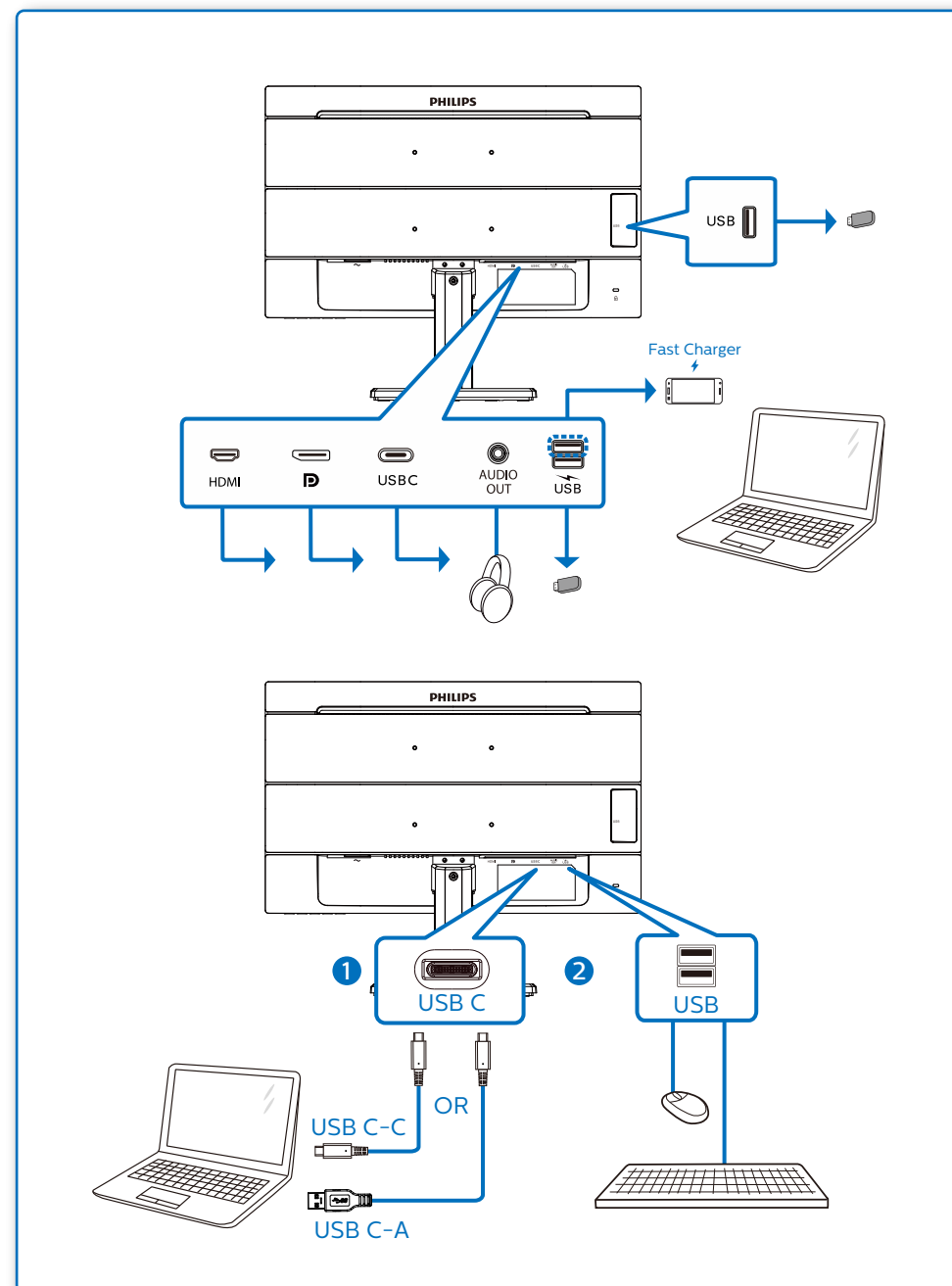
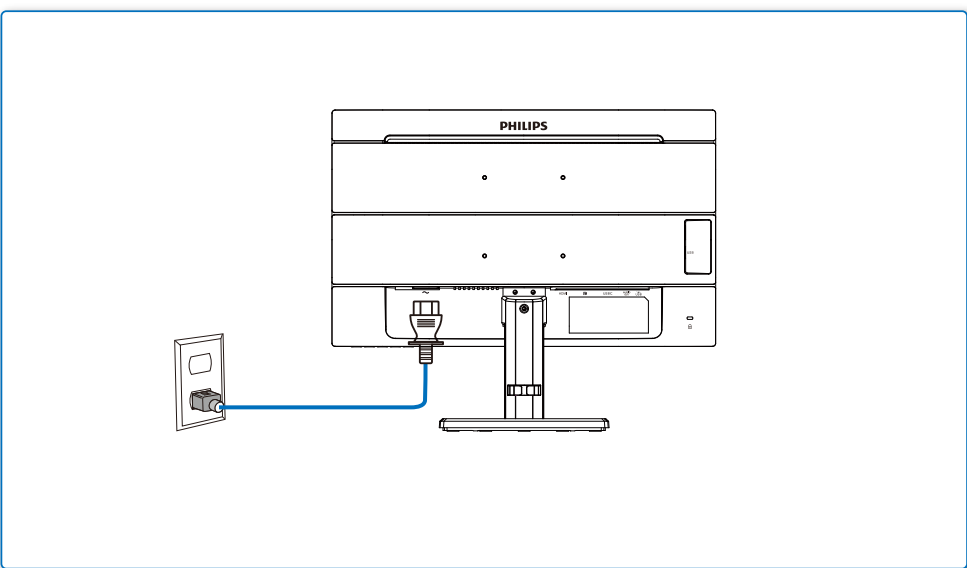
\*Different according to region

Display design may differ from that illustrated

1



2



3

