

SUB SOURCE POSSIBILITY (x1)		HDMI	DisplayPort	USBC1
MAIN SOURCE (x1)	MultiView	●	●	●
	HDMI	●	●	●
	DisplayPort	●	●	●
SUB SOURCE POSSIBILITY (x1)	USBC1	●	●	●
	USBC2	●	●	●



Register your product and get support at www.philips.com/support

Register your product and get support at www.philips.com/support



FAQ



Software SmartControl



User Manual

Version: M1127BU5601Q1WWT
2022 © TOP Victory Investments Ltd. All rights reserved.

This product has been manufactured by and is sold under the responsibility of Top Victory Investments Ltd., and Top Victory Investments Ltd. is the warrantor in relation to this product. Philips and the Philips Shield Emblem are registered trademarks of Koninklijke Philips N.V. and are used under license.

Specifications are subject to change without notice.

HDMI®

The Adopted Trademarks HDMI, HDMI High Definition Multimedia Interface, and the HDMI Logo are trademarks or registered trademarks of HDMI Licensing Administrator, Inc. in the United States and other countries.

www.philips.com

Energy Labelling
27B1U5601H



Printed in China



H41G785381368A

PHILIPS
Business Monitor
5000 Series

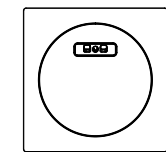
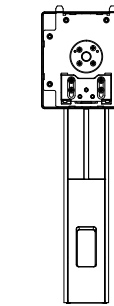
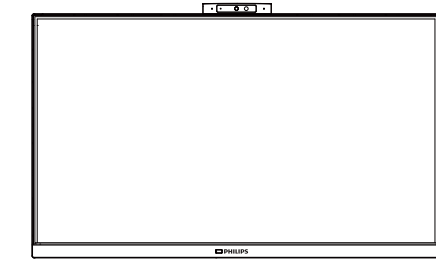


27B1U5601H

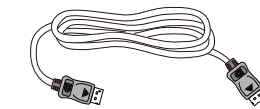
Quick start

Register your product and get support at www.philips.com/welcome

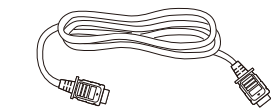
Contents



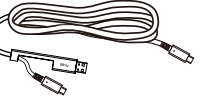
Power



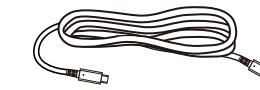
* DP



* HDMI



*USB C-C/A



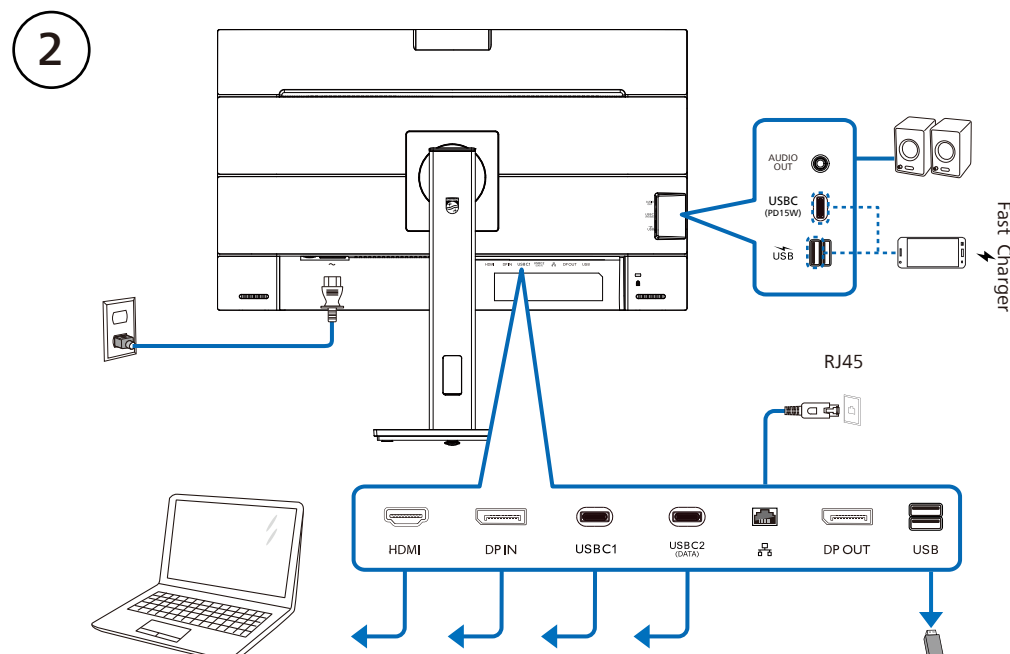
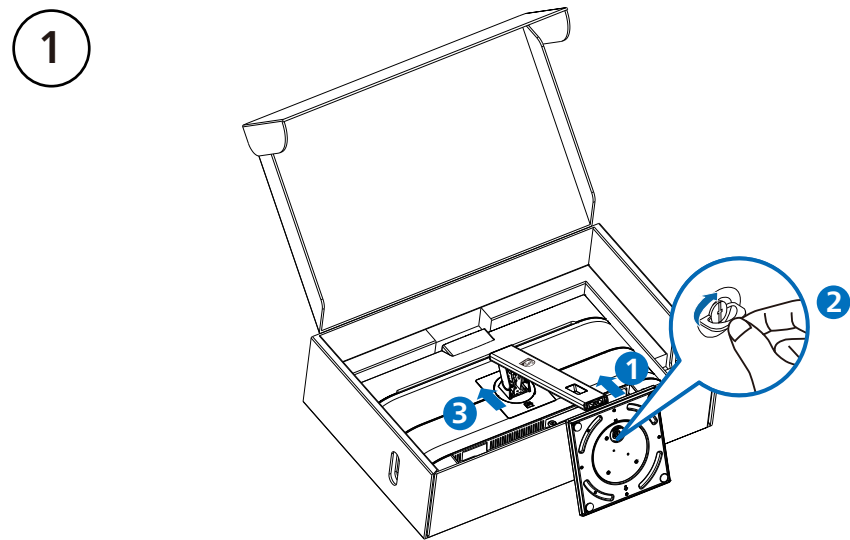
*USB C-C



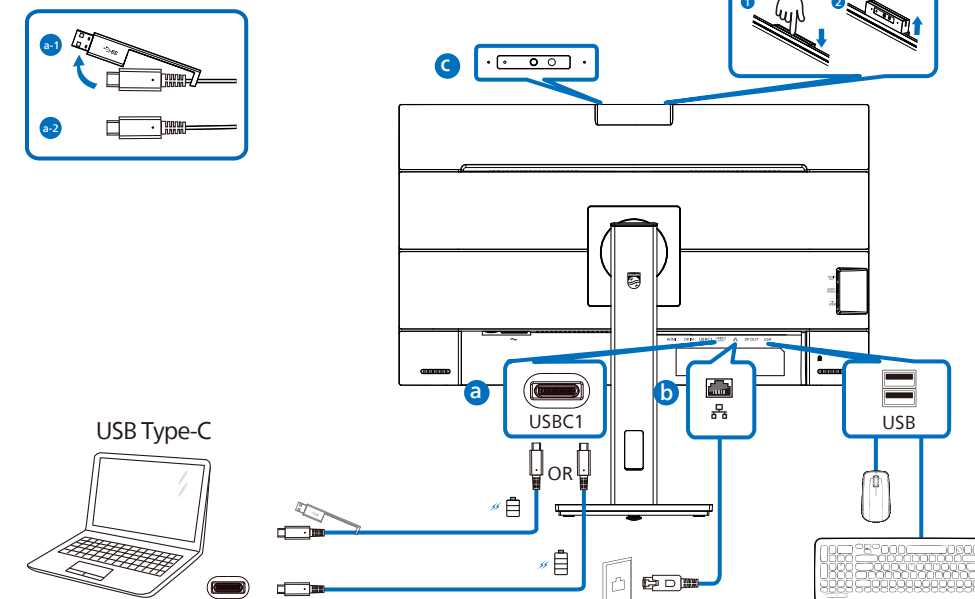
*USB C-A

*Different according to region

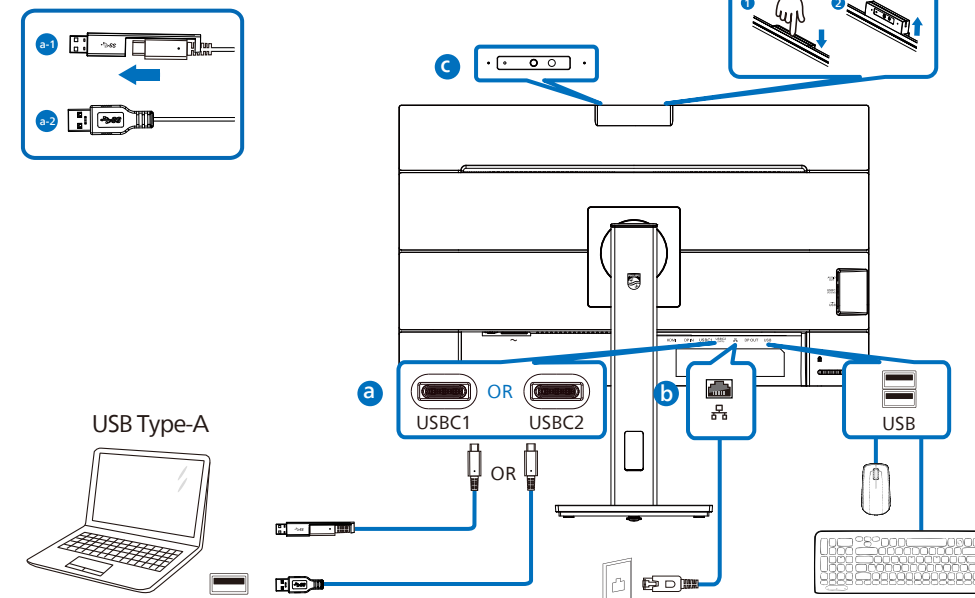
Display design may differ from that illustrated



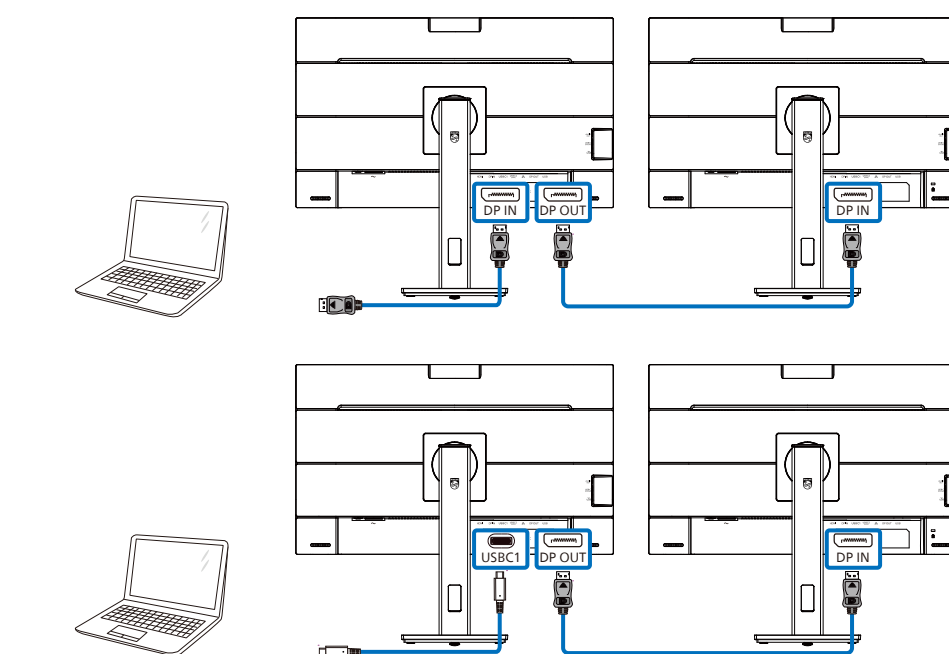
USB docking (USB C-C)



USB hub (USB A-C)



Multi-stream transport



KVM

