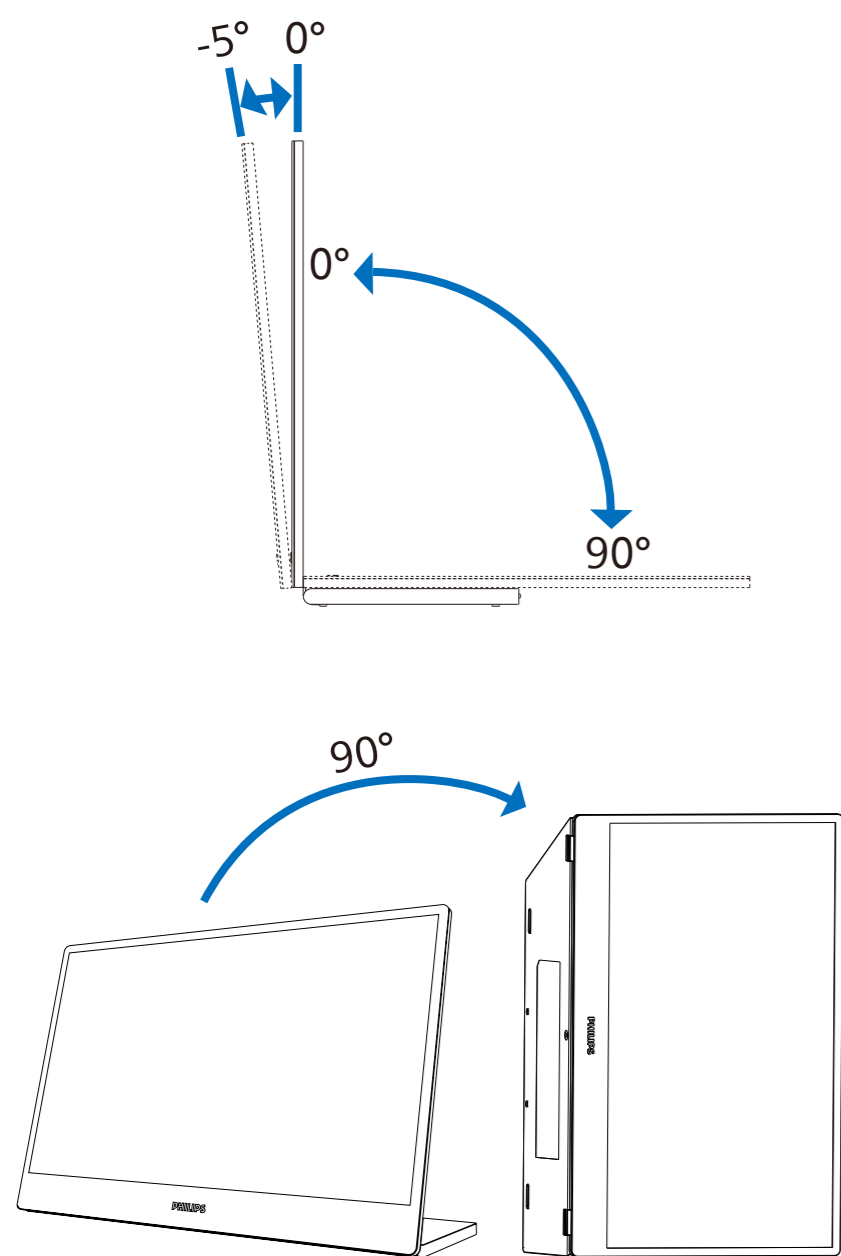


5



Register your product and get support at www.philips.com/support



FAQ



Software SmartControl



User Manual

Version: M1116BU3300Q1WWL

2022 © TOP Victory Investments Ltd. All rights reserved.

This product has been manufactured by and is sold under the responsibility of Top Victory Investments Ltd., and Top Victory Investments Ltd. is the warrantor in relation to this product. Philips and the Philips Shield Emblem are registered trademarks of Koninklijke Philips N.V. and are used under license.

Specifications are subject to change without notice.

HDMI

The terms HDMI, HDMI High-Definition Multimedia Interface, and the HDMI Logo are trademarks or registered trademarks of HDMI Licensing Administrator, Inc.

www.philips.com



Printed in China



F41G16M1813-1B----

PHILIPS

Portable Monitor

3000 Series



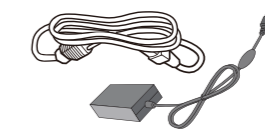
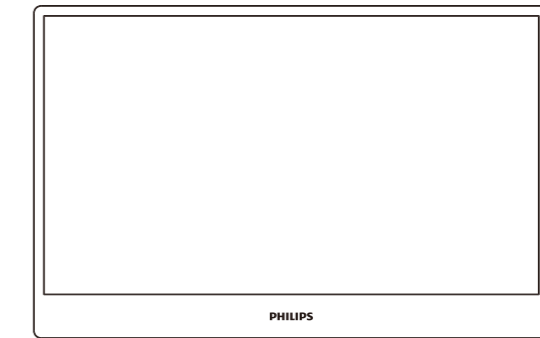
16B1P3300

Quick start

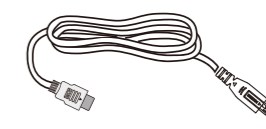
Register your product and get support at www.philips.com/welcome



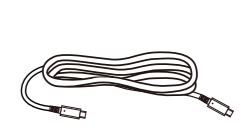
Contents



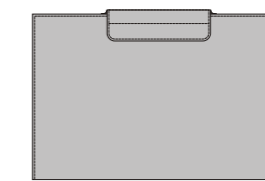
AC/DC Adapter



*Micro HDMI-HDMI



*USB C-C

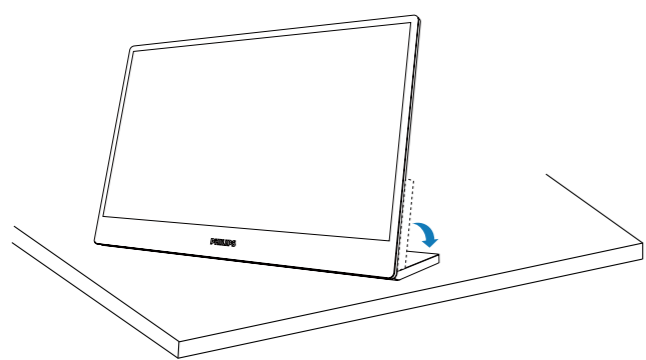


*Protective case

*Different according to region

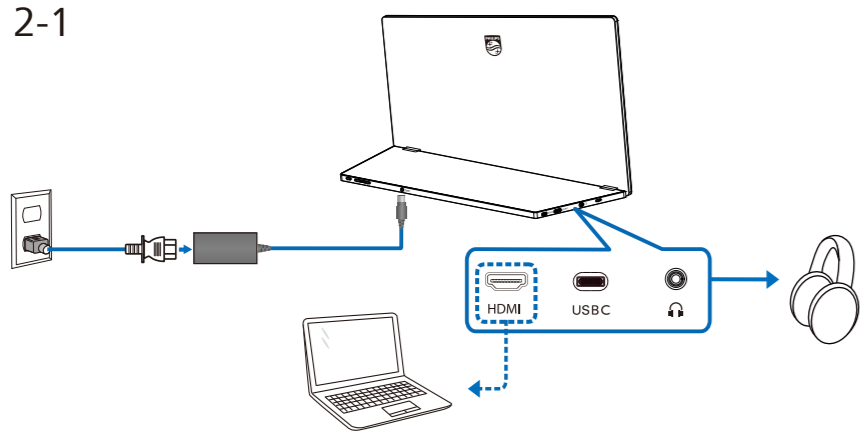
Display design may differ from that illustrated

1

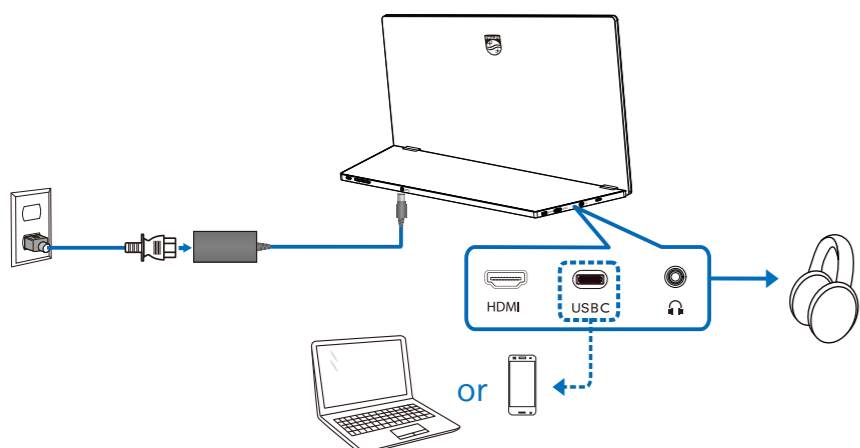


▲ CAUTION: Place the monitor face down on a smooth surface. Pay attention not to scratch or damage the screen.

2 2-1

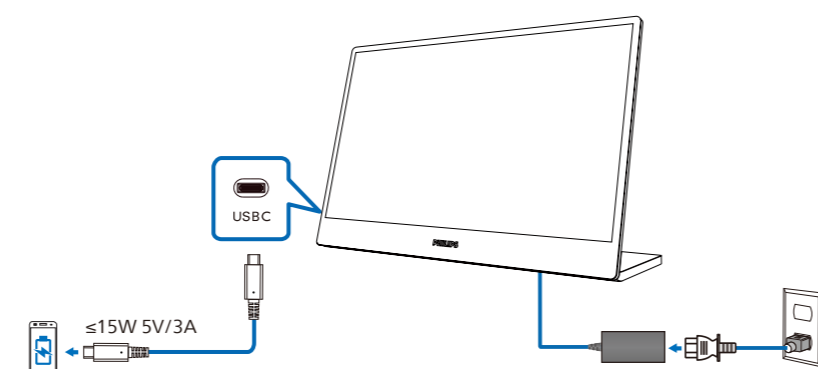


2-2

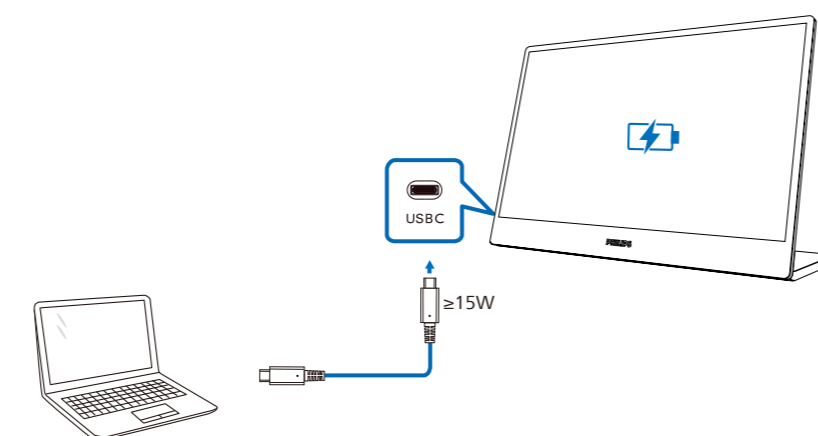


3 Power Delivery

3-1 With Adapter



3-2 Without Adapter



4

