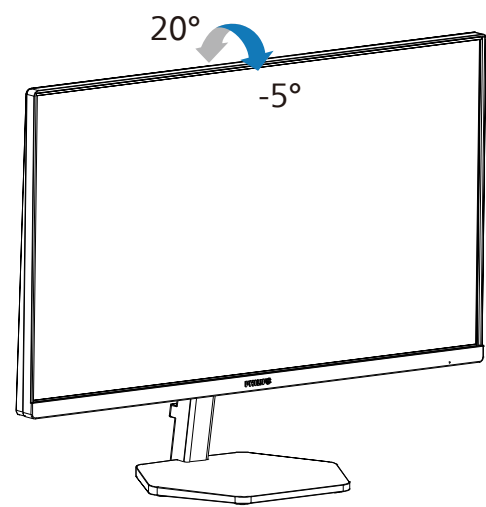


4



Register your product and get support at
www.philips.com/support



FAQ

Software
SmartControlUser
Manual

Version: 27E1N3300Q1T

2021 © TOP Victory Investments Ltd. All rights reserved.

This product has been manufactured by and is sold under the
 responsibility of Top Victory Investments Ltd., and Top Victory
 Investments Ltd. is the warrantor in relation to this product.
 Philips and the Philips Shield Emblem are registered trademarks
 of Koninklijke Philips N.V. and are used under license.

Specifications are subject to change without notice.

HDMI

The terms HDMI, HDMI High-Definition Multimedia
 Interface, and the HDMI Logo are trademarks or
 registered trademarks of HDMI Licensing
 Administrator, Inc.

www.philips.com

Energy Labelling

27E1N3300A



Printed in China



H41G78S381331A

PHILIPS

Monitor

3000 Series

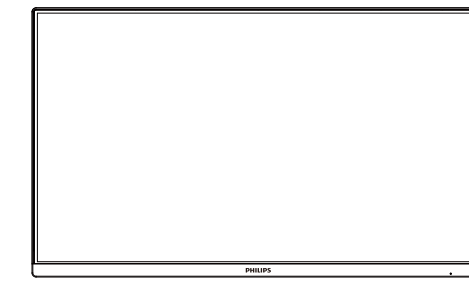


27E1N3300A

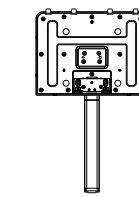
Quick start

 Register your product and get support at www.philips.com/welcome

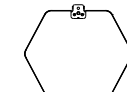

Contents



Quick start



*HDMI



*USB C-C



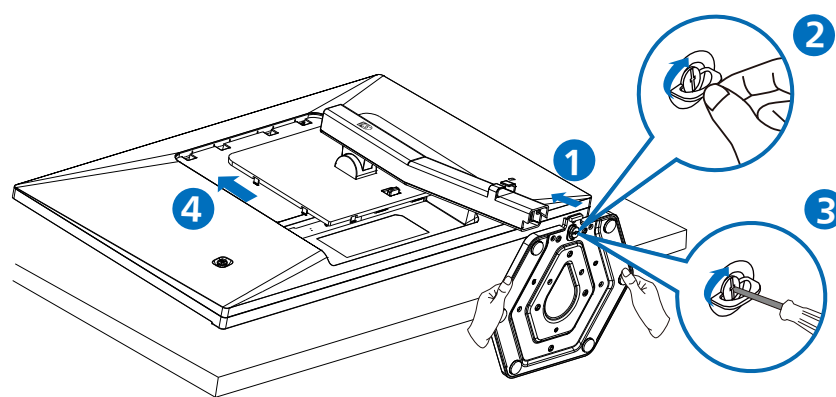
Power



*USB C-C/A

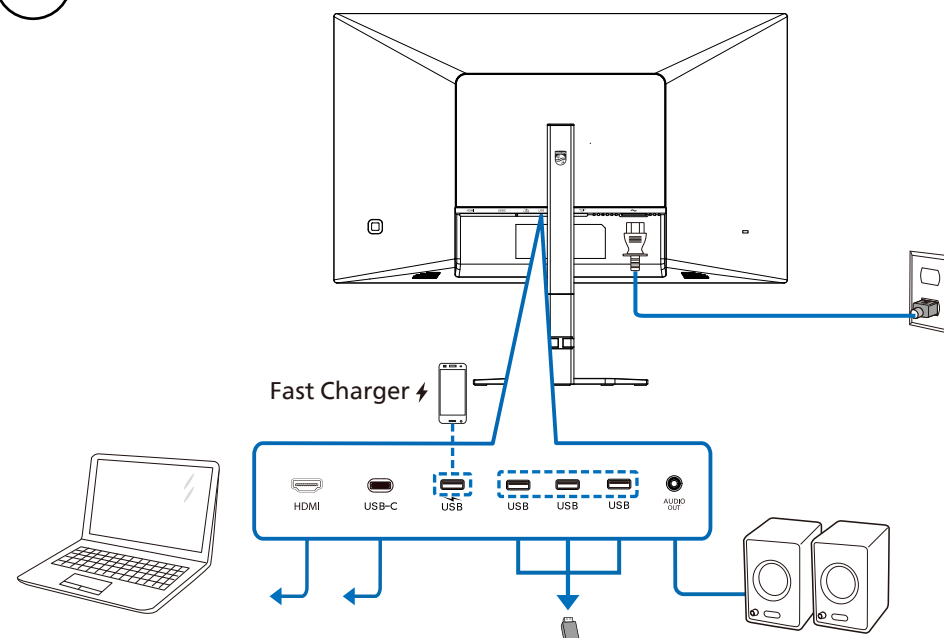
*Different according to region
 Display design may differ from that illustrated

1

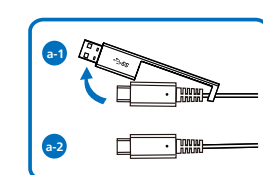


▲ CAUTION: Place the monitor face down on a smooth surface.
 Pay attention not to scratch or damage the screen.

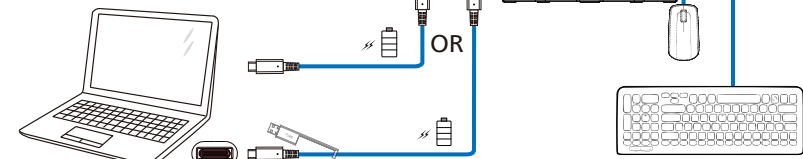
2



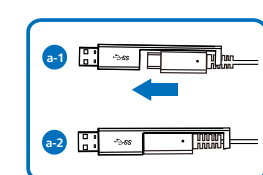
USB C-C



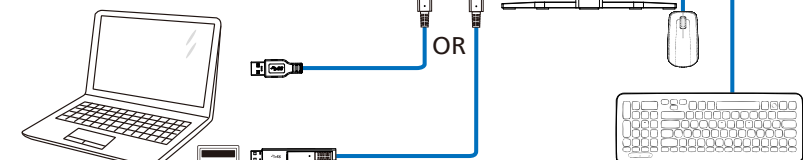
USB Type-C



USB A-C



USB Type-A



3

