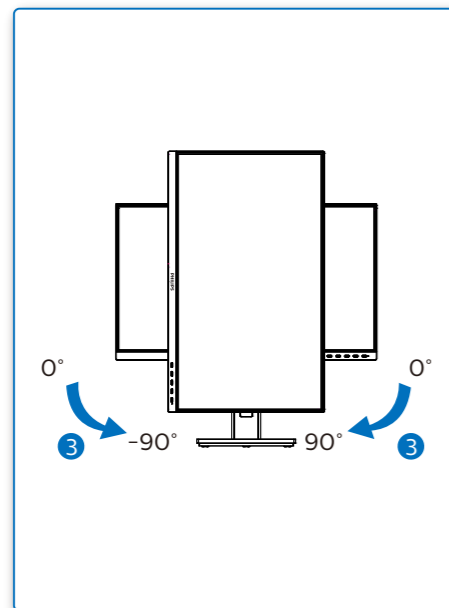
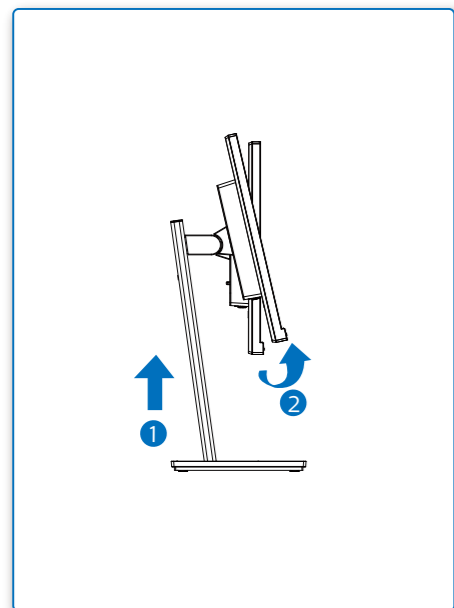
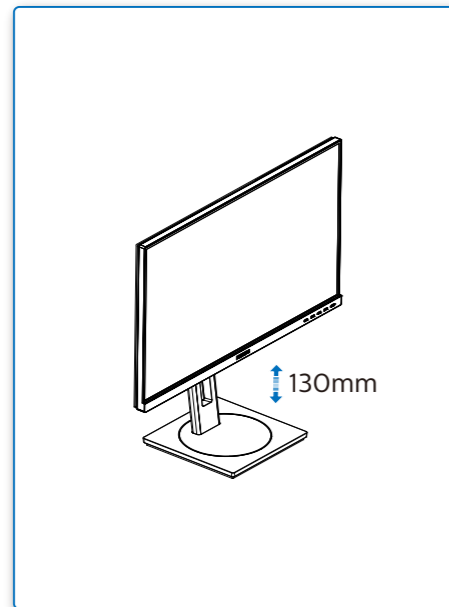
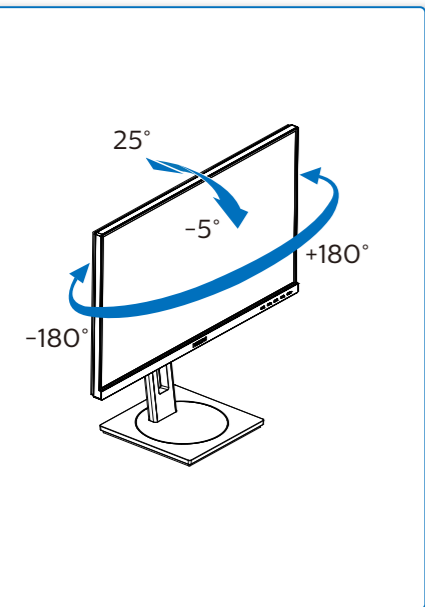


4



Register your product and get support at  
[www.philips.com/support](http://www.philips.com/support)



FAQ

Software  
SmartControlUser  
Manual

Version: M10275SQ1T  
 2020 © TOP Victory Investments Ltd. All rights reserved.

This product has been manufactured by and is sold under the responsibility of Top Victory Investments Ltd., and Top Victory Investments Ltd. is the warrantor in relation to this product. Philips and the Philips Shield Emblem are registered trademarks of Koninklijke Philips N.V. and are used under license.

Specifications are subject to change without notice.

**HDMI**

The terms HDMI, HDMI High-Definition Multimedia Interface, and the HDMI Logo are trademarks or registered trademarks of HDMI Licensing Administrator, Inc.

[www.philips.com](http://www.philips.com)

Energy Labelling

275S1AE



Printed in China



H41G785281349D

PHILIPS

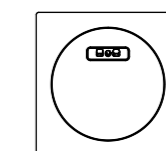
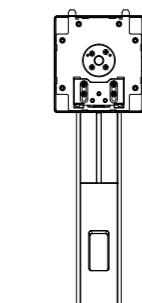
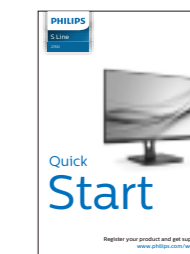
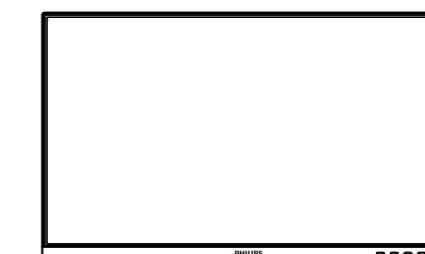
S Line

275S1



# Quick Start

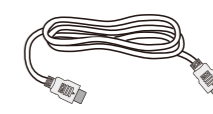
Register your product and get support at  
[www.philips.com/welcome](http://www.philips.com/welcome)



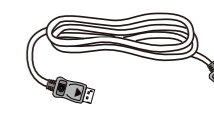
Power



\* DVI(275S1AE)



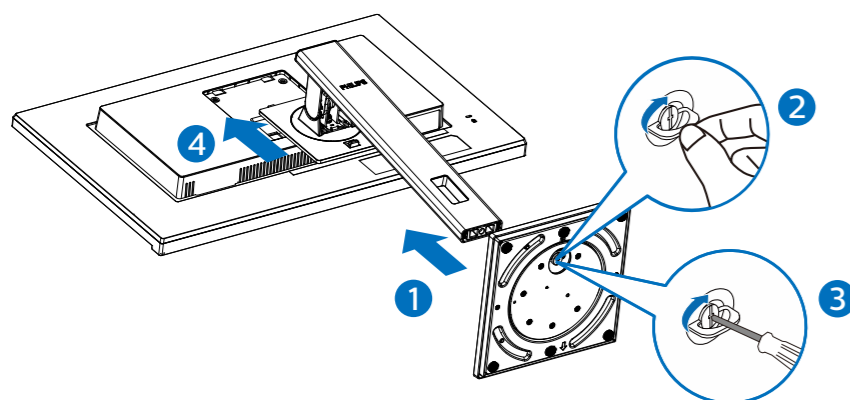
\*HDMI



\*DP

\*Different according to region  
 Display design may differ from that illustrated

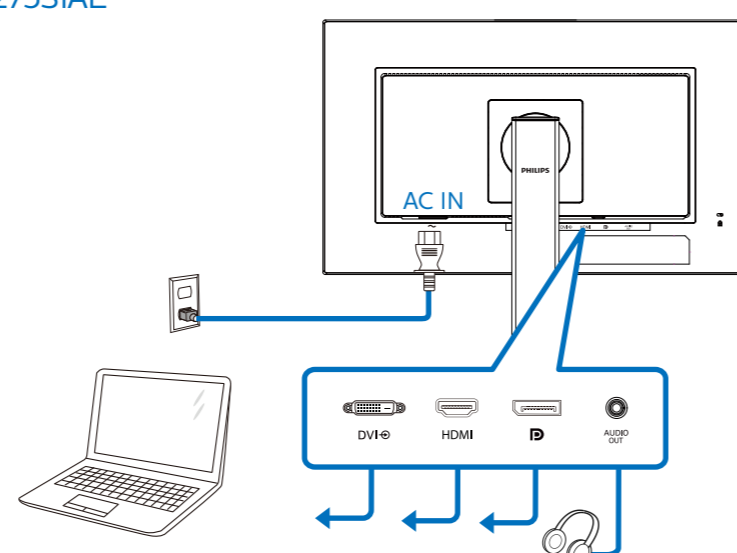
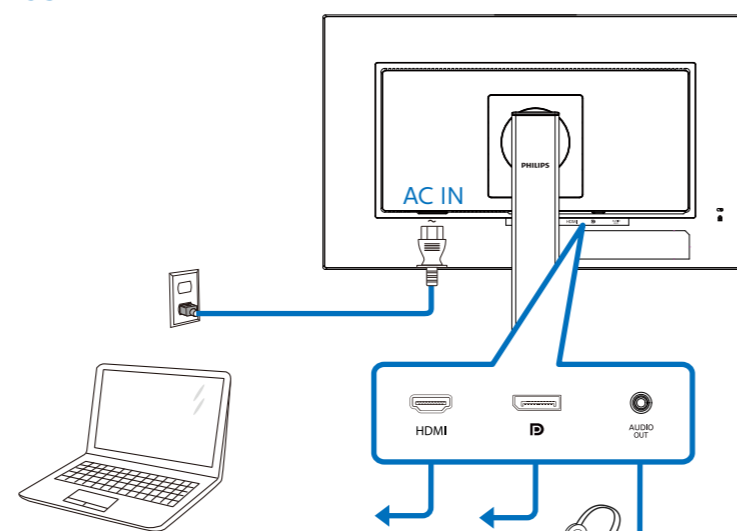
1



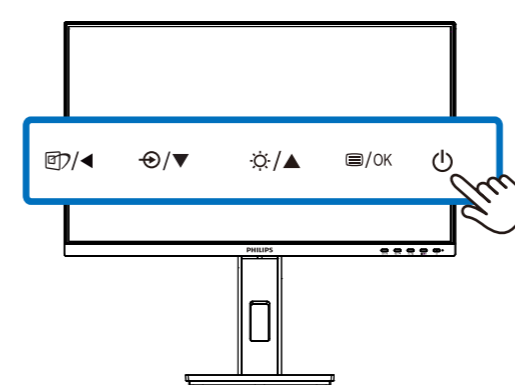
2

275S1E

275S1AE



3

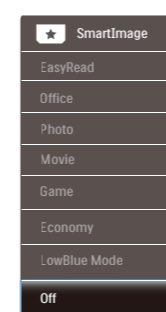


275S1AE

Brightness - + 70

275S1E

Brightness - + 80



275S1E

Input  
HDMI 1.4  
DisplayPort

275S1AE

Input  
DVI  
HDMI 1.4  
DisplayPort