



Images on screen are simulated

2017 LG Medical Imaging Displays

8MP Clinical Review Monitor (27HJ712C-W) | 8MP Surgical Monitor (27HJ710S-W)

LG Electronics U.S.A., Inc.
HE B2B Division
2000 Millbrook Drive
Lincolnshire, IL 60069
Customer Service: 888.865.3026
www.LG.com/us/commercial/display-support
Contact your LG Regional Sales Representative:
Sales: 800.897.8726
E-mail: info@LGsolutions.com
SPEC_27HJ7-12C-10S_021724_PR

All screen images are simulated. Dimensions and weights are approximate. Design, specifications, and features subject to change without notice.

© Copyright 2017 LG Electronics USA, Inc. All Rights Reserved. The "LG" logo is a registered trademark of LG Electronics Inc.

In Plane Switching is a trademark of LG Display Co., LTD. VESA is a trademark of Video Electronics Standards Association. HDMI, the HDMI logo and High-Definition Multimedia Interface are trademarks or registered trademarks of HDMI Licensing LLC. All other product and brand names are trademarks or registered trademarks of their respective companies.

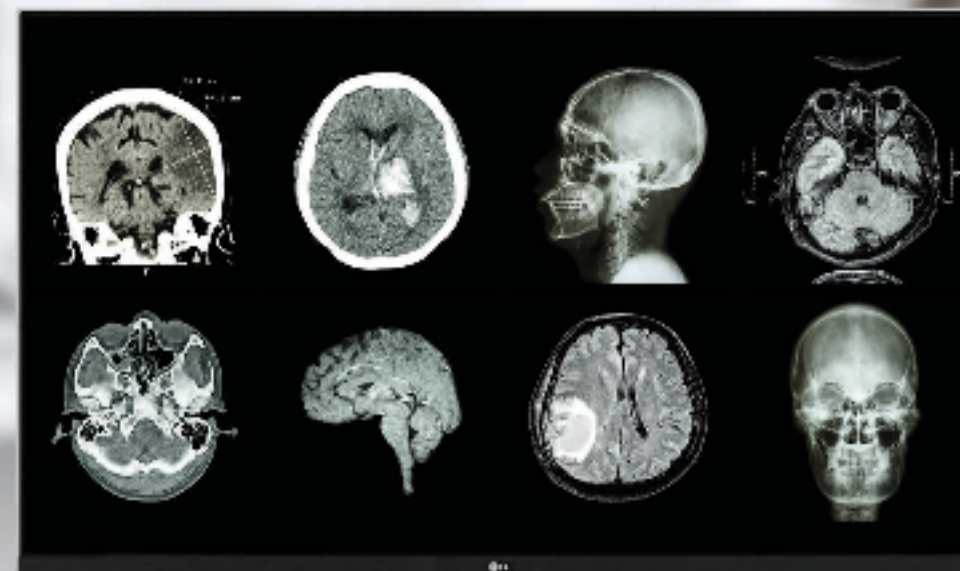


8MP CLINICAL REVIEW MONITOR

A Display compliant with DICOM Part 14
for Clinical Review Applications

Easily multi-task while performing clinical reviews from various clinical review applications, such as items from the department of radiology and efficiently study on-screen information.

27HJ12C-W

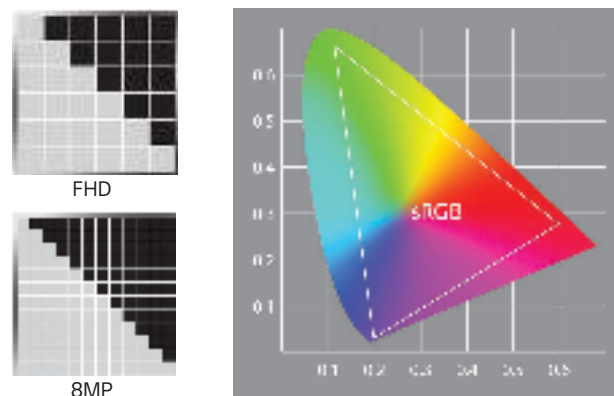


Images on screen are simulated



8MP IPS Display & 350 nits with sRGB over 99%

The 27-inch 8MP display with IPS technology offers an outstanding picture quality along with wide viewing angles. With its 178 wide viewing angles, images can be viewed simultaneously by several people with the highest quality reproduction and minimal color shift. Furthermore, a wide range of colors represented by sRGB over 99% of the color space guarantee vivid color expression without any color shift for a more precise clinical review.



*8MP(Mega Pixel): 4K, 3840x2160

DICOM 14 Compatible

In the medical field, monitors must display images accurately and consistently, especially for the grayscale tone that may vary even between two monitors of the same model. To ensure the most accurate and consistent shading possible for medical images, LG measures and sets every grayscale tone on the production line to produce a monitor compliant with DICOM Part 14.

DICOM Part 14, published by the National Electrical Manufacturers Association (NEMA) and the American College of Radiology (ACR), provides strict guidelines for how grayscale display function calibration and quality assurance tests should be performed on displays used in medical imaging applications.



*DICOM (Digital Imaging and Communications in Medicine): Standard applied to the grayscale tone characteristics of monitors used in the medical field.

Dynamic Sync Mode

Whenever scanning is performed after checking up, a lot of heavy information is created and it can be difficult to clearly get all of this information at once.

Since the LG clinical review monitor supports a low input lag and quick response time, it allows the monitor to receive a signal quickly and display a clear image with no distortion, for precise decoding information to achieve an efficient review.

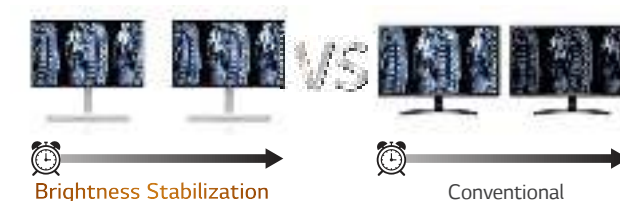


Low Input Lag &
Quick Response Time

*Dynamic Sync Mode is only available to 60Hz input source.

Brightness Stabilization

A sensor measures the backlight brightness stability and automatically compensates for brightness fluctuations caused by aging, for a consistently stable display during the usage time.



Eye-comfort features

Flicker Safe reduces on-screen flickers, which helps minimize eye strain and eye fatigue. By combining flicker-safe with the proven picture quality of IPS technology, users can comfortably work throughout the day.

Additionally, **Reader Mode** provides optimal conditions for clinical use. LG's Reader Mode technology reduces blue light, protecting doctors' eyes from fatigue.

8MP SURGICAL MONITOR

27HJ710S-W

A Display Optimized for the Operating Room

The superior detailed picture quality of the LG surgical monitor meets operating room requirements. With its 27-inch IPS 8MP display, the LG surgical monitor improves work efficiency not only by enabling detailed observation but also by displaying multiple imaging applications.

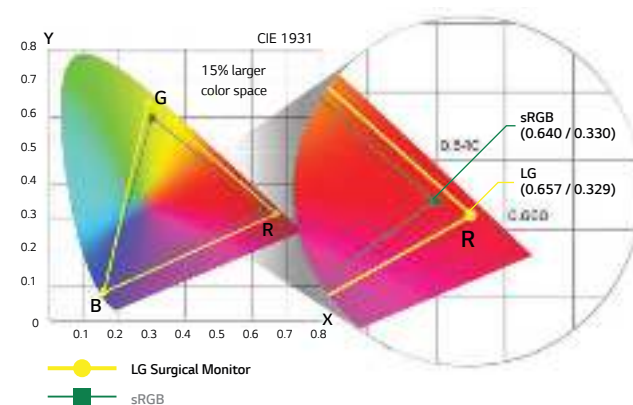


Images on screen are simulated



IPS & 115% of sRGB Enhancing Deep Red

The 8MP IPS display not only enables detailed observation of previously hard-to-see regions but also displays multiple imaging applications. In particular, the LG surgical monitor provides brightness and sRGB over 99% to ensure accurate color reproduction in the surgery room. Moreover, by adding a deep red color spectrum, the LG surgical monitor assures color expression of the red spectrum.



*8MP(Mega Pixel): 4K, 3840x2160

DICOM Part 14 & Brightness Stabilization

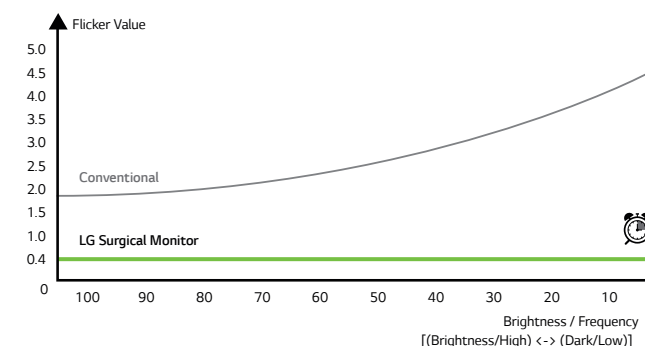
With various features to stabilize and adjust the brightness to meet standard viewing requirements, the LG surgical monitor carefully measures and sets every grayscale tone to create a monitor compliant with DICOM Part 14 to ensure visual accuracy and consistency. Furthermore, LG's surgical monitors offer stabilized brightness settings that quickly adapt during the surgical procedure to correspond to local lighting conditions.

DICOM Part 14, published by the National Electrical Manufacturers Association (NEMA) and the American College of Radiology (ACR), provides strict guidelines for performing grayscale display function calibration and quality assurance tests on displays used in medical imaging applications.

*DICOM (Digital Imaging and Communications in Medicine): Standard applied to the grayscale tone characteristics of monitors used in the medical field.

Flicker Safe

Flicker Safe reduces on-screen flickers, which helps minimize eye strain and eye fatigue. By combining Flicker Safe with the proven picture quality of IPS technology, users can comfortably work throughout the day.



*This result based on internal LGE lab tests.

Dustproof & Waterproof

The LG's multi-coated glass is highly durable and scratch-resistant and protects the panel during surgical procedures. The front panel is IP35 rated and the back panel is IP32 rated, protecting against dust, water or fluids that may contact it during an operation. In addition to the waterproofing safeguards, its flat surface allows for easy cleaning of the 8MP panel and control buttons.



DustProof



WaterProof

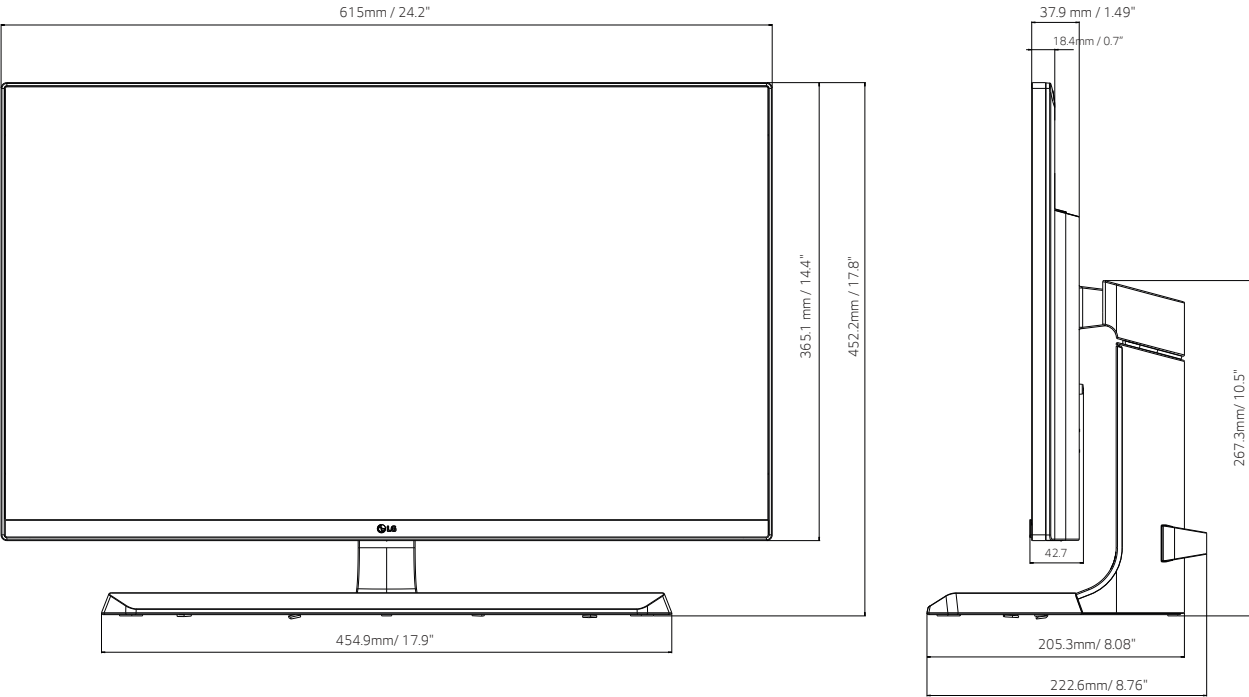
Anti-reflection & Optical Bonding Glass

An LG surgical monitor with optically bonded glass significantly reduces internal reflection between the cover glass and the LCD to enhance accuracy. Improved anti-reflection ability enables displays to look brighter and sharper for the highest image quality. Now you can accurately judge what you see on-screen with high legibility and definition during the operation without eyestrain.

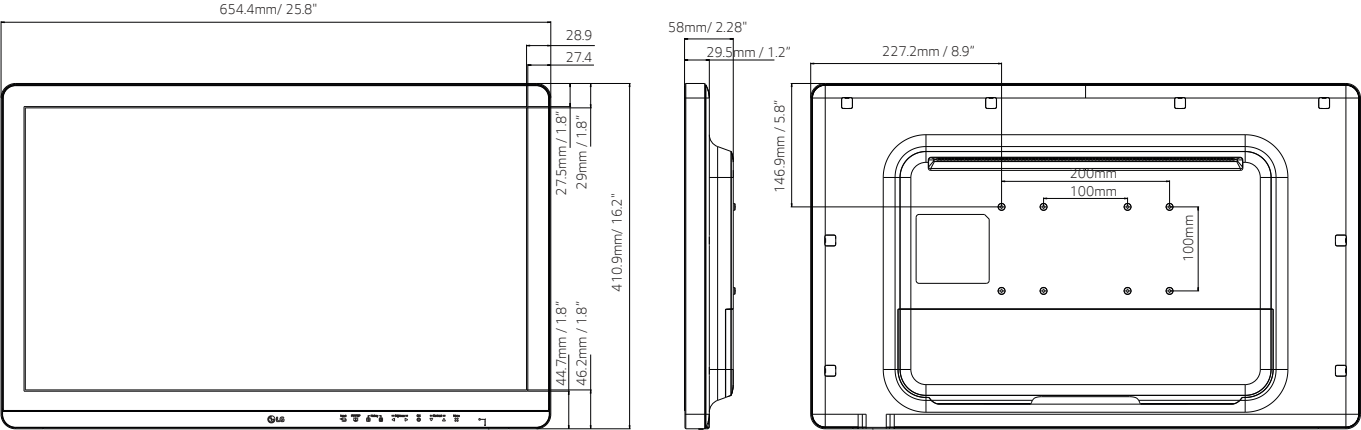


Images on screen are simulated



8MP Clinical Review Monitor Dimension (mm / inches)



8MP Surgical Monitor



Specifications

| | | LG 8MP Clinical Review Monitor | LG 8MP Surgical Monitor |
|----------------------------|----------------------------------|--|---|
| | | 27HJ712C-W | 27HJ710S-W |
| ITEMS | |  |  |
| Panel | Type | IPS | IPS + Glass |
| | Size | 27" (16:9) | 27" (16:9) |
| | Native Resolution | 3840 x 2160 | 3840 x 2160 |
| | Pixel Pitch | 0.1554mm x 0.1554mm | 0.1554mm x 0.1554mm |
| | Display Colors | 10bit(8bit+ FRC)/sRGB 99% | 10bit(8bit+ FRC)/ sRGB99% + Deep Red |
| | Viewing Angles | 178/178 | 178/178 |
| | Brightness | 350cd/m2 | 800cd/m2 |
| | Surface Treatment | Anti-Glare 3H | Optical Bonding Glass (1.3T) |
| | Contrast Ratio (typical) | 1000:1 | 1000:1 |
| Video Signals | Response Time (typical) | 14ms (Typ.) | 14ms (Typ.) |
| | Input Terminals | HDMI(2.0) x 2, DP(1.2) x 1 | HDMI(2.0) x 1, DP(1.2) x 1, DVI-D x 1, 3G-SDI x 1 |
| | Output Terminals | Headphone Out | DP(1.2) x 1, DVI-D x 1, 3G-SDI x 1 |
| | Digital Scanning Frequency (H/V) | 30~135kHz / 56~61Hz | HDMI, DP: 30~135kHz / 56~61Hz DVI-D: 30~83kHz / 56~61Hz |
| USB | Sync Formats | Dynamic Sync Mode (Thru Mode) | Dynamic Sync Mode (Thru Mode) |
| | Function | 1upstream, 2downstreams | 1upstream, 1downstream (For calibration) |
| Power | Standard | USB3.0 | USB3.0 |
| | Power Requirements | 100-240Vac, 50/60Hz | 100-240Vac, 50/60Hz |
| | Maximum Power Consumption | 65W | 120W |
| | Power Save Mode | 0.5W | - |
| | Power Management | 0.3W | 0.3W |
| Sensor | | Brightness Stabilization | Brightness Stabilization |
| Environmental Requirements | | - | IP35 Rated (Front) / IP32 Rated (Back) |
| Certifications & Standards | | IEC(IEC60601-1 / IEC60601-1-2), FCC(FCC part 15 Class A), CB, UL(UL60601-1), C-UL-US, KC, RoHS, REACH, WEEE, CISPR, EN, ANSI, AAMI, CE MDD(Class 1) FDA(US) (FDA Class1) | |
| Supplied Accessories | | Power cord, HDMI Cable, DP Cable, USB Cable, Adapter, CD/Book Manual | Power cord, HDMI Cable, DP Cable, Adapter, CD/Book Manual |
| Physical Specifications | Weight(Without Stand) | 4.7kg/10.4lb | 7.7kg/17.0lbs |
| | Weight(With Stand) | 6.2kg/13.7lb | - |
| Other | UPC | 7 19192 60960 0 | 7 19192 60919 8 |
| Warranty | | 3 Year Limited Warranty (Parts and Labor) | |

*The monitor stand is not included with the surgical monitor.