

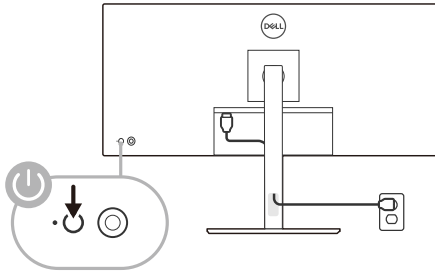
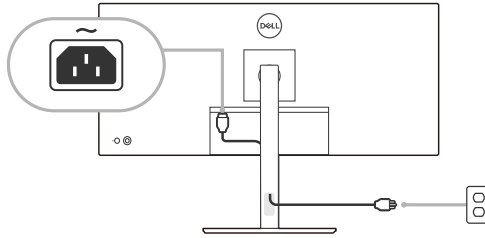
Firmware Update Instruction User's Guide

Overview

Firmware update tool is an application used to update monitor firmware.

Firmware Update Pre-requisites

- 1 The monitor must be connected to a power source during the firmware updating process.



- 2 Make sure there is only ONE video input source, e.g. DisplayPort, HDMI, or USB Type-C, from the computer to the monitor.



NOTE: Ensure that all other video cables between the monitor and the computer are unplugged.

- 3** Connect the USB upstream cable or USB Type-C cable directly between the monitor and your computer. Do not use any other device between this connection.



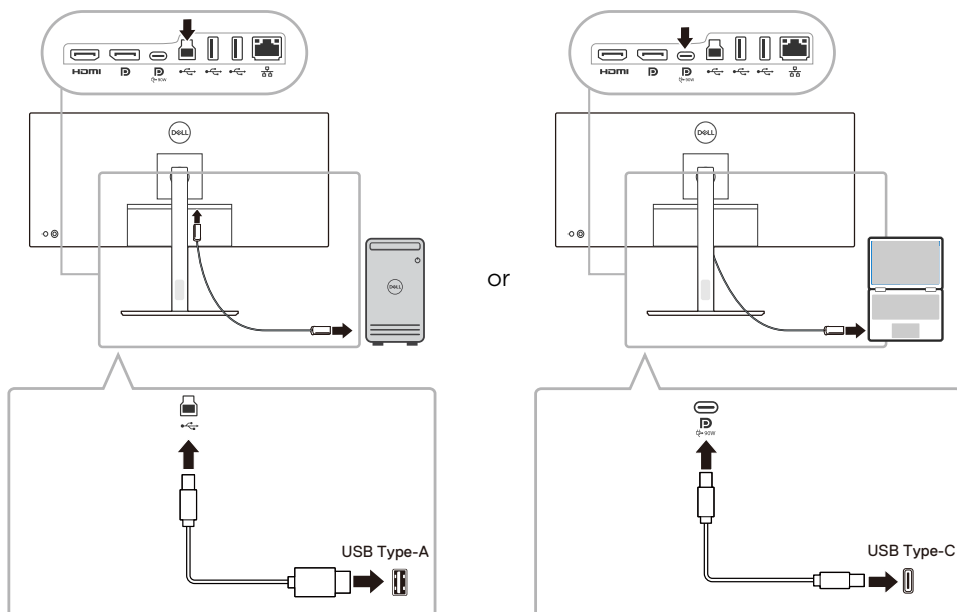
NOTE: Ensure that other USB cables and USB devices between the monitor and the computer are unplugged.



NOTE: Disconnect all other monitors from the notebook or desktop. This will ensure that only one display is connected while conducting firmware update.



NOTE: It is recommended to update the firmware with a notebook as the monitor screen may go blank during the firmware update process.



NOTE: Do not unplug the USB upstream cable or USB Type-C cable till the updating process finishes.



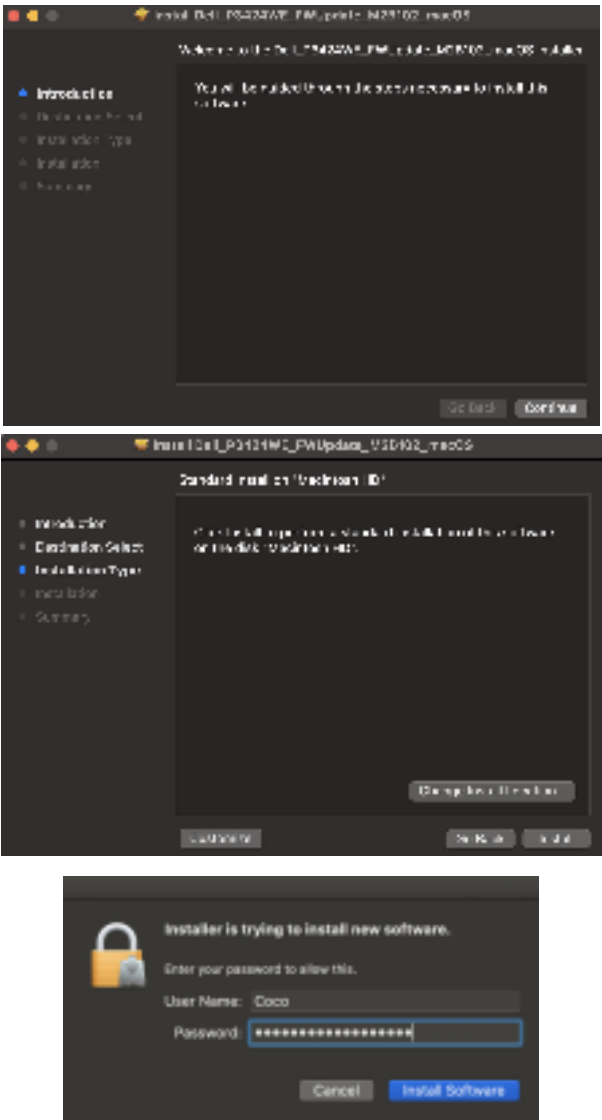
NOTE: Please disable sleep mode before you launch the firmware update.

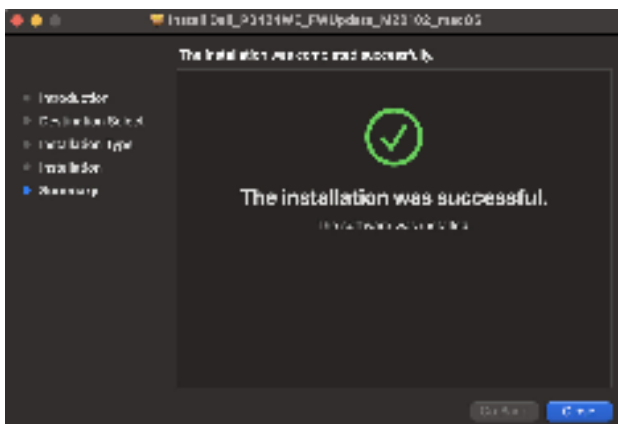


NOTE: Update one monitor at a time. Do not conduct firmware update on multiple monitors at a given time.

Installation

- 1 Download the pkg file (e.g. Dell_P3424WE_FWUpdate_M2B102_macOS.pkg) and double-click it to launch the installer.
- 2 Follow the installation steps and input the administrator password if required.





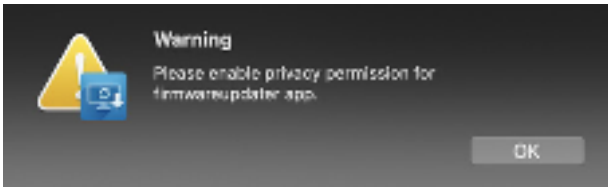
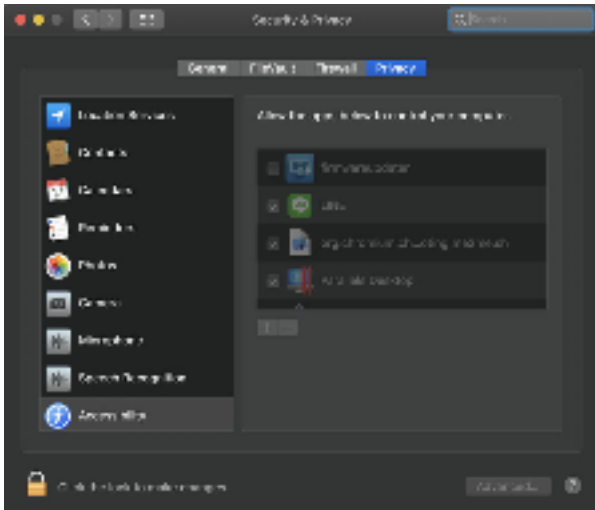
- 3 The **Firmware Update Utility** will be launched automatically after the installation completes.

Updating firmware

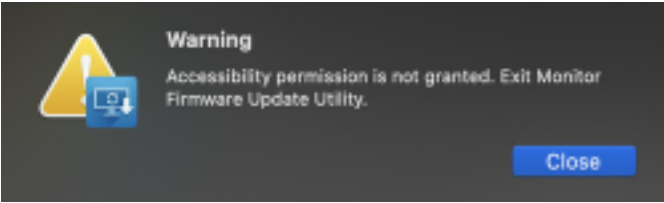
- 1 Initializing for device status.

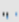


- 2 For macOS 10.15 Catalina or later versions, **Security & Privacy** setting dialogue is opened automatically. Please enable privacy permission for firmwareupdater.



If **Accessibility** permission is not granted, the following message appears. Press **close** to exit firmwareupdater and monitor firmware update will not proceed.



- 3 The utility will load the firmware file automatically. Or, you can select your file manually by clicking  and navigating to the UPG firmware file.



- 4 Click **Update**. The utility will start updating the new firmware.



- 5 Once the updating process is completed, please follow the on-screen instructions to re-start your monitor.



NOTE: Update takes up to 12 minutes. Do not power off or disconnect cable while updating.



NOTE: If you experience problems during or after update, refer to [Troubleshooting](#)

Troubleshooting

Errors	Possible Solutions
File permission error	<ul style="list-style-type: none">• Try saving the firmware file in another location.• Check if the firmware file has read permission.• Check if you have owner rights for the firmware file.• Or, run this utility with administrator privileges.
Monitor not detected	<ul style="list-style-type: none">• Follow Firmware Update Pre-requisites to check if the power and USB cables are properly connected to your computer and reopen the Monitor Firmware Update Utility.• In USB of the OSD menu, make sure the USB port is set to the corresponding input signal.
Write protection error	Re-try updating with the following steps: 1 Close the Monitor Firmware Update Utility. 2 Turn off the monitor by pressing the power button. 3 Re-plug the power cord. 4 Turn on the monitor. 5 Try updating again with the Monitor Firmware Update Utility.
Flash erase error	
Update error	
Monitor firmware checksum error	
USB device inactive after new firmware installation.	Re-try the updating steps from 1 to 4 as stated above.
A warning message appears: "Firmware update was not completed. Please update the monitor firmware again."	Re-try updating the monitor's firmware. Do not turn off the ISP tool until the update is complete.